

# **XYKD150-III整车配件目录及配件价格\$**

(卡丁车)

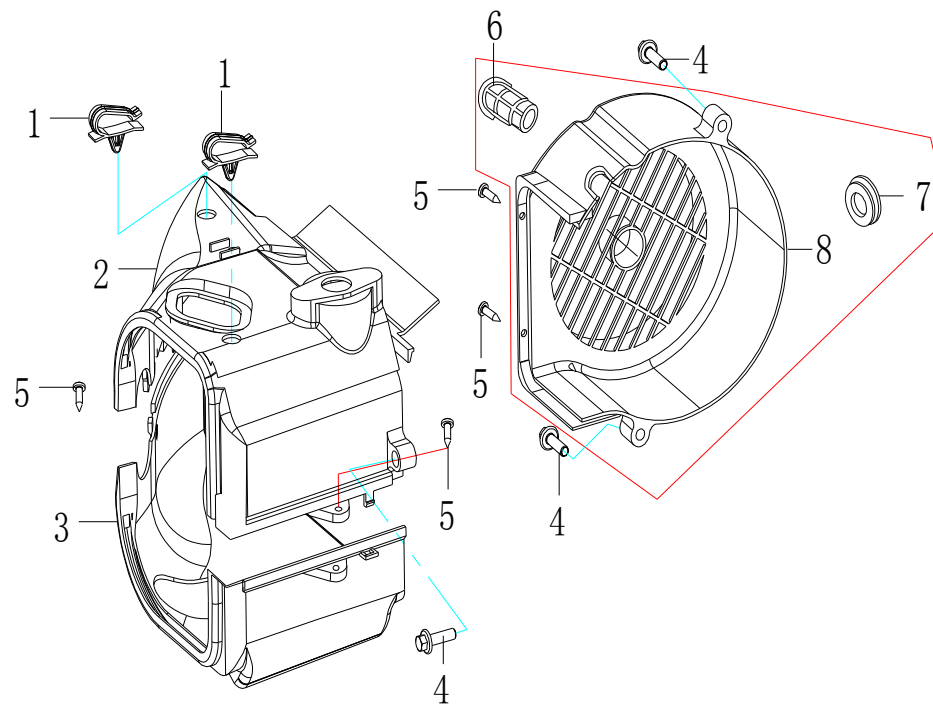
星月集团经济运行部

28/01/2007

**E-1**

风扇盖、引擎罩盖

**FAN COVER.SHROUD**



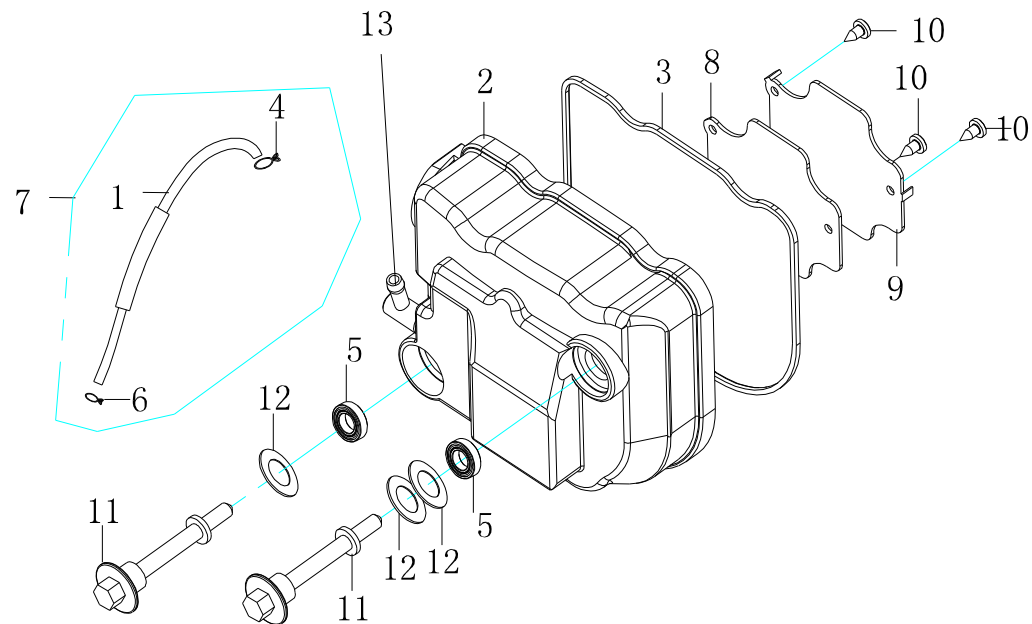
## E-1 风扇盖、引擎罩盖---FAN COVER.SHROUD

[illegible]

E-2

汽缸头盖组件

CYLINDER HEAD COVER

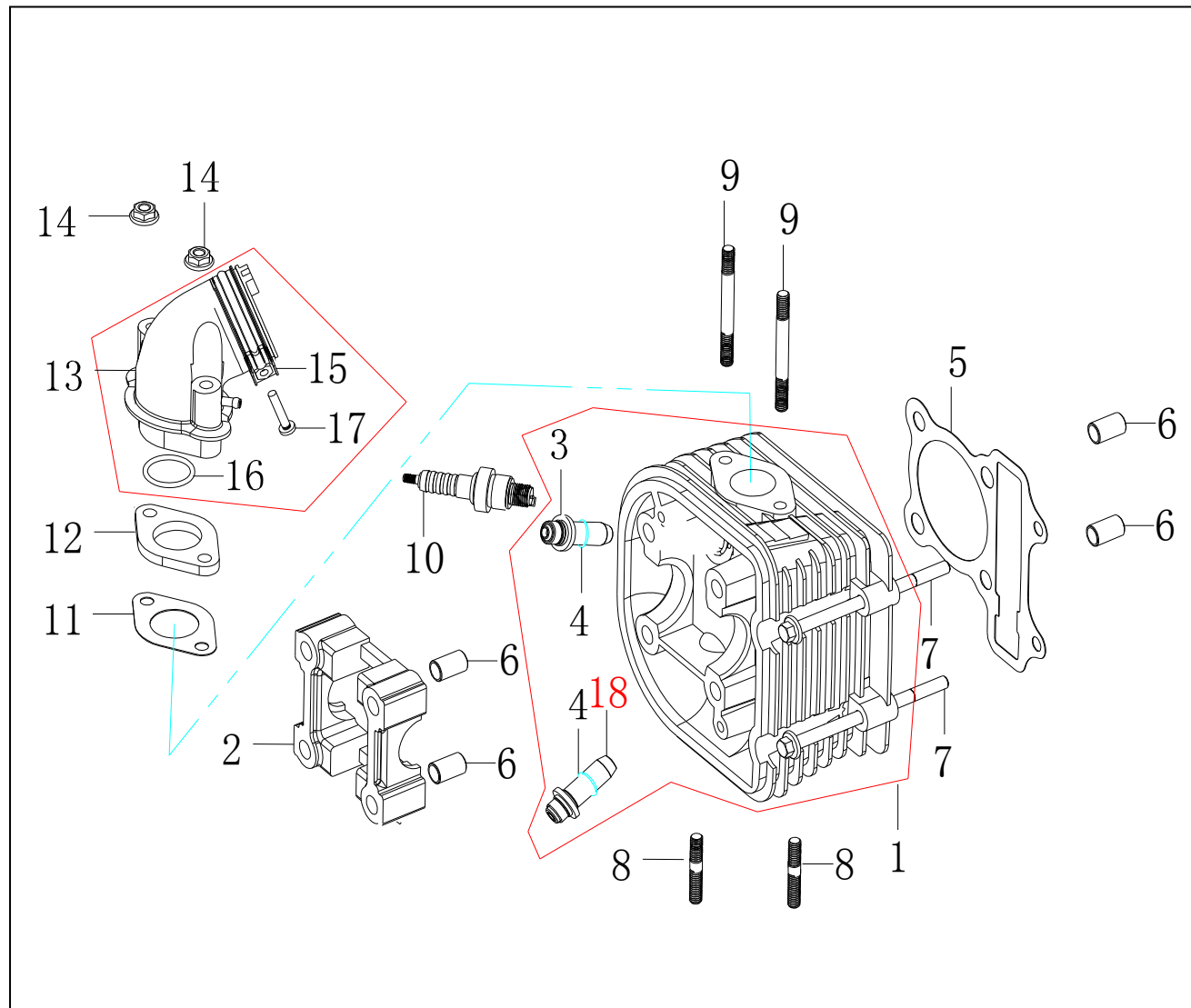


| E-2 汽缸头盖组件---CYLINDER HEAD COVER |                |               |                                    |          |        |       |
|----------------------------------|----------------|---------------|------------------------------------|----------|--------|-------|
| 序号                               | 代号(PART NO.)   | 名称            | DESCRIPTION                        | 数量       | 备注     | 单价\$  |
| REF NO.                          |                |               |                                    | REGD NO. | REMARK | PRICE |
| 1                                | 122102060010   | 通气橡胶管         | VENTILATION RUBBER TUBE            | 1        |        |       |
| 2                                | 122201040010   | 汽缸罩盖          | CYLINDER COVER LID                 | 1        |        |       |
| 3                                | 122201040040   | 气缸头罩盖密封圈      | AIRPROOF RING                      | 1        |        |       |
| 5                                | 122202000080   | 油封组件          | OIL SEAL COMPONENTS                | 2        |        |       |
| 4                                | 122102060020   | 锁紧圈8.5        | LOCK RING 8.5                      | 1        |        |       |
| 6                                | 122102060040   | 锁紧圈           | LOCK RING                          | 1        |        |       |
| 7                                | 122102060000   | 通气橡胶管组件       | VENTILATION RUBBER TUBE COMPONENTS | 1        |        |       |
| 8                                | 122201040020   | 密封垫片          | AIRPROOF GASKET                    | 1        |        |       |
| 9                                | 122201040030   | 盖板            | LID BOARD                          | 1        |        |       |
| 10                               | GB845-85. 4210 | 自攻螺钉ST4. 2×10 | SELF-LOCK BOLT ST 4. 2x10          | 3        |        |       |
| 11                               | 122202000070   | 压紧螺栓          | IMPACT BOLT                        | 2        |        |       |
| 12                               | 122202000060   | 尼龙垫片          | GASKET                             | 3        |        |       |
| 13                               | 113101041000   | 接头            | TUBE CONNECTOR                     | 1        |        |       |
|                                  |                |               |                                    |          |        |       |
|                                  |                |               |                                    |          |        |       |
|                                  |                |               |                                    |          |        |       |
|                                  |                |               |                                    |          |        |       |
|                                  |                |               |                                    |          |        |       |
|                                  |                |               |                                    |          |        |       |
|                                  |                |               |                                    |          |        |       |

E-3

汽缸头

CYLINDER

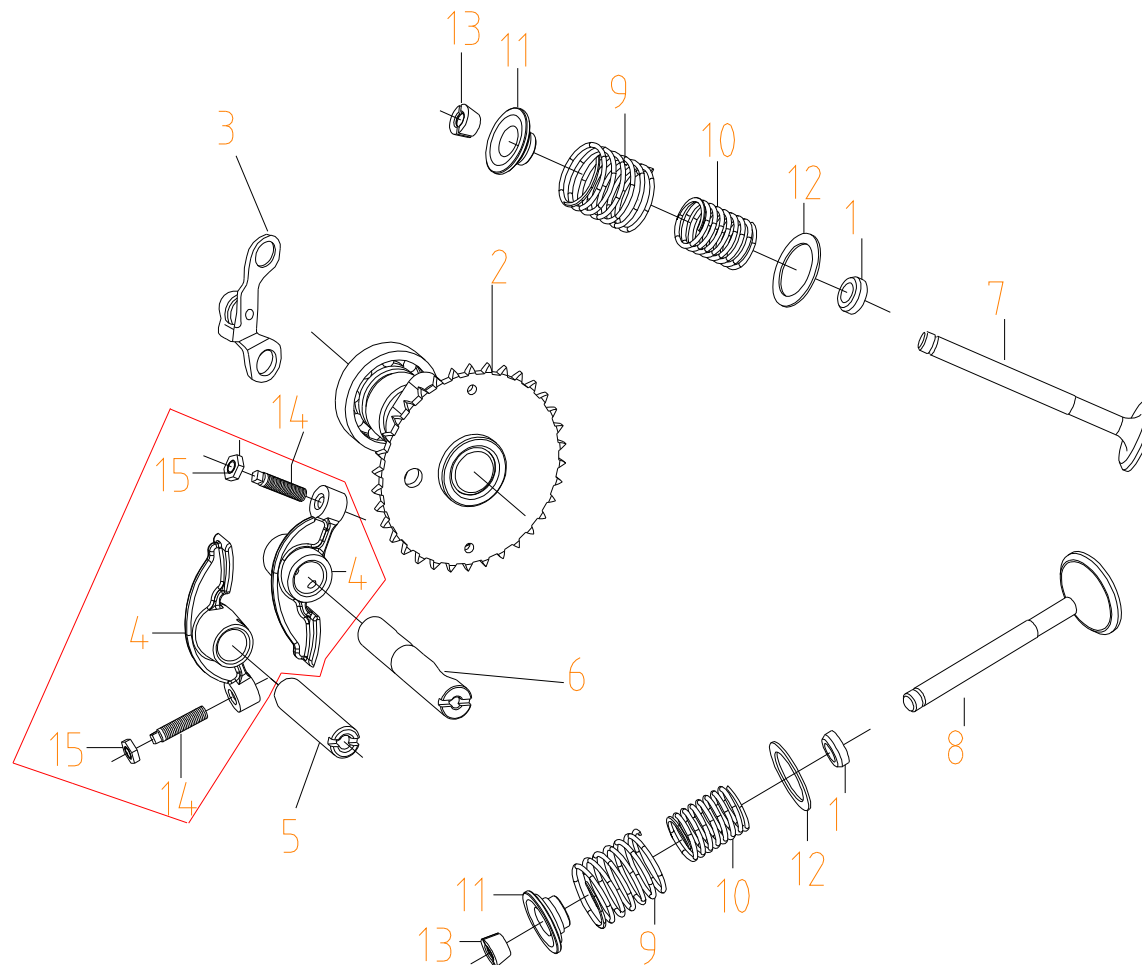


| E-3 汽缸头---CYLINDER |                  |                           |                                  |          |        |       |
|--------------------|------------------|---------------------------|----------------------------------|----------|--------|-------|
| 序号                 | 代号(PART NO.)     | 名称                        | DESCRIPTION                      | 数量       | 备注     | 单价\$  |
| REF NO.            |                  |                           |                                  | REGD NO. | REMARK | PRICE |
| 1                  | 127101011000     | 气缸盖组件                     | CYLINDER LID COMPONENTS          | 1        |        |       |
| 3                  | 122201011010     | 进气门导管                     | INLET DOOR CONDUIT               | 1        |        |       |
| 4                  | GB3452.1-82.9518 | O型圈 $\phi 9.5 \times 1.8$ | O-RING $\phi 9.5 \times 1.8$     | 2        |        |       |
| 18                 | 122201011040     | 排气门导管                     | EXIT DOOR CONDUIT                | 1        |        |       |
| 2                  | 122201000010     | 凸轮轴固定座                    | CAMSHAFT FIXING BASE             | 1        |        |       |
| 5                  | 127101000050     | 气缸盖垫片                     | CYLINDER LID GASKET              | 1        |        |       |
| 6                  | 122101000020     | 定位销10x16                  | POSITIONING PIN 10×16            | 4        |        |       |
| 7                  | 122101000030     | 螺栓M6x100                  | BOLT M6×100                      | 2        |        |       |
| 8                  | GB900-88.0835    | 双头螺柱M8x35                 | DUAL-HEAD STUD M8×35             | 2        |        |       |
| 9                  | GB900-88.0662    | 双头螺柱M6x62                 | DUAL-HEAD STUD M6×62             | 2        |        |       |
| 10                 | 122110300000     | 火花塞                       | SPARK PLUG                       | 1        |        |       |
| 11                 | 122101010020     | 进气管垫片                     | INLET TUBE GASKET                | 1        |        |       |
| 12                 | 122101010010     | 进气管隔热板                    | INLET TUBE HEAT INSULATION BOARD | 1        |        |       |
| 13                 | 122101030000     | 进气管组件                     | INLET TUBE COMPONENTS            | 1        |        |       |
| 15                 | 122101060000     | 进气管夹组件                    | INLETNTUBE CLAMP COMPONENTS      | 1        |        |       |
| 16                 | GB3452.1-82.6518 | O型圈 $\phi 6.5 \times 1.8$ | O-RING $\phi 6.5 \times 1.8$     | 1        |        |       |
| 17                 | GB818-85.0425    | 十字盘头螺栓M4X25               | CROSS PAN HEAD BOLT M4X25        | 1        |        |       |
| 14                 | GB6177-86.06     | 螺母M6                      | NUT M6                           | 2        |        |       |
|                    |                  |                           |                                  |          |        |       |
|                    |                  |                           |                                  |          |        |       |

**E-4**

凸轮轴、气门

**CAMSHAFT.VALVE**



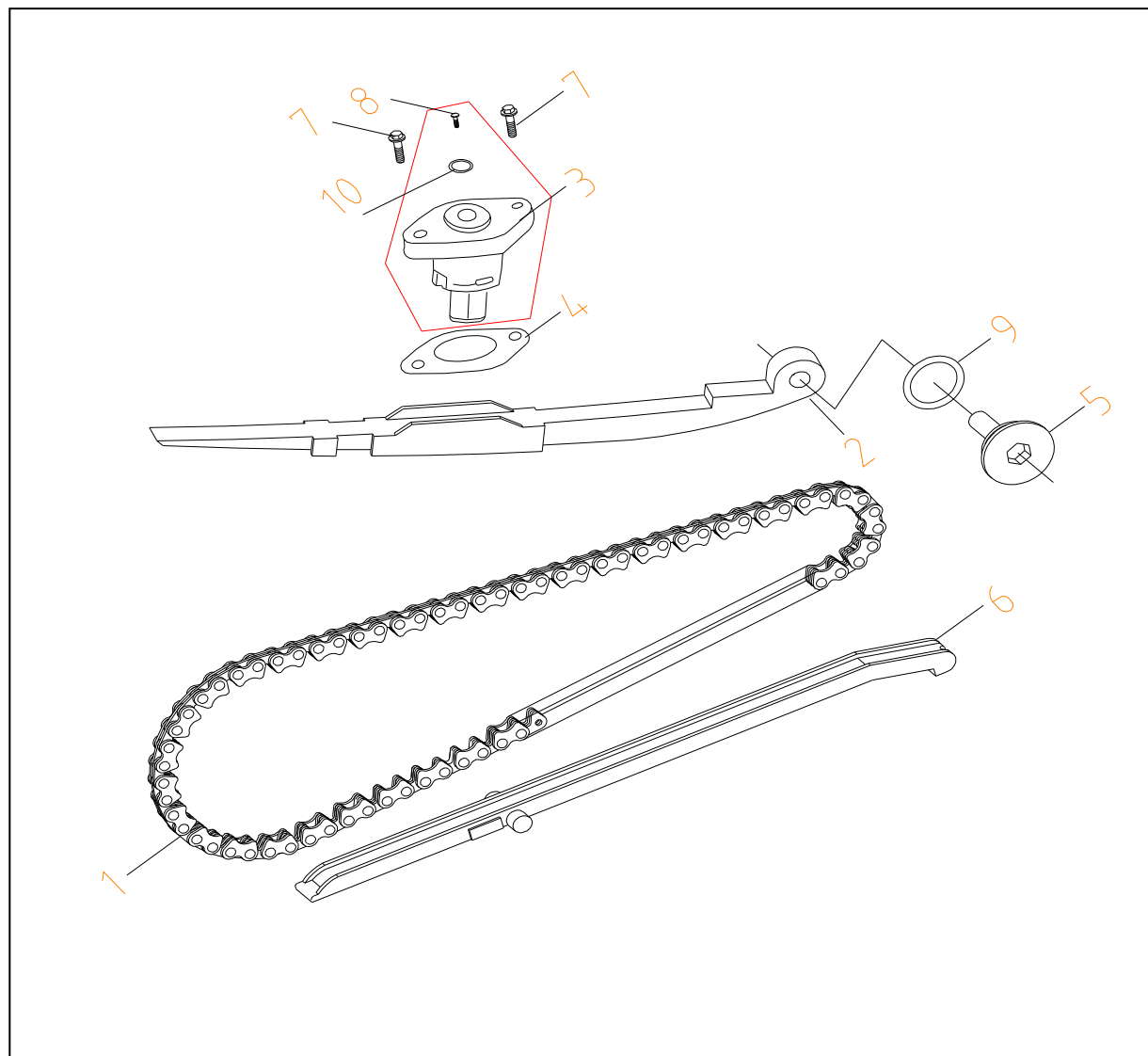


| E-4 凸轮轴、气门---CAMSHAFT.VALVE |              |          |                                    |          |        |       |
|-----------------------------|--------------|----------|------------------------------------|----------|--------|-------|
| 序号                          | 代号(PART NO.) | 名称       | DESCRIPTION                        | 数量       | 备注     | 单价\$  |
| REF NO.                     |              |          |                                    | REGD NO. | REMARK | PRICE |
| 1                           | 122101012000 | 气门杆油封组件  | VALVE SHANK OIL SEAL COMPONENTS    | 2        |        |       |
| 2                           | 122204010000 | 凸轮轴分部件   | CAMSHAFT SUB-PARTS                 | 1        |        |       |
| 3                           | 122104010020 | 限位板组件    | LIMIT BOARD COMPONENTS             | 1        |        |       |
| 5                           | 122104080000 | 进气门摇臂轴组件 | INLET DOOR ROCKER SHAFT COMPONENTS | 1        |        |       |
| 6                           | 122104000090 | 排气门摇臂轴   | EXHAUST DOOR ROCKER SHAFT          | 1        |        |       |
| 7                           | 122204000070 | 进气门      | INLET DOOR                         | 1        |        |       |
| 8                           | 122204000030 | 排气门      | EXHAUST DOOR                       | 1        |        |       |
| 9                           | 122204000040 | 气门外弹簧    | EXTERIOR VALVE SPRING              | 2        |        |       |
| 10                          | 122204000050 | 气门内弹簧    | INTERIOR VALVE SPRING              | 2        |        |       |
| 11                          | 122104000010 | 气门弹簧座    | VALVE SPRING BASE                  | 2        |        |       |
| 12                          | 122104000070 | 气门弹簧外座   | VALVE SPRING OUTER BASE            | 2        |        |       |
| 13                          | 122104000020 | 气门锁夹     | VALVE LOCK CLAMP                   | 4        |        |       |
| 4                           | 122204000100 | 气门摇臂     | VALVE LOCK                         | 2        |        |       |
| 14                          | 122104000110 | 气门调整螺钉   | VALVE ADJUST BOLT                  | 2        |        |       |
| 15                          | 122104000100 | 气门调整螺母   | VAVLE ADJUST NUT                   | 2        |        |       |
|                             |              |          |                                    |          |        |       |
|                             |              |          |                                    |          |        |       |
|                             |              |          |                                    |          |        |       |
|                             |              |          |                                    |          |        |       |
|                             |              |          |                                    |          |        |       |

E-5

配气链条.拉力杆

CAM CHAIN .TENSIONER



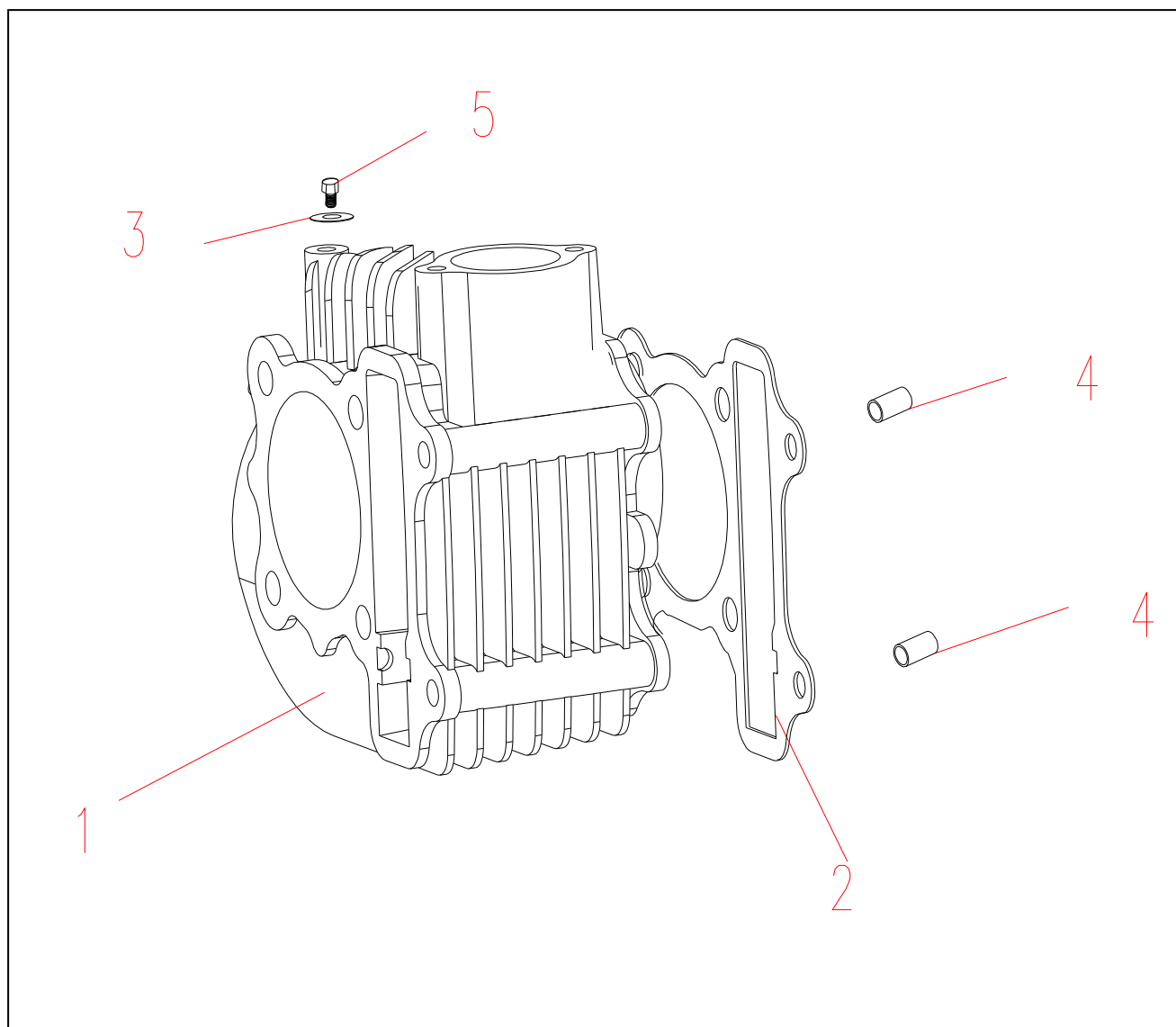
## E-5 配气链条.拉力杆---CAM CHAIN .TENSIONER

[illegible]

E-6

气缸体

CYLINDER BODY



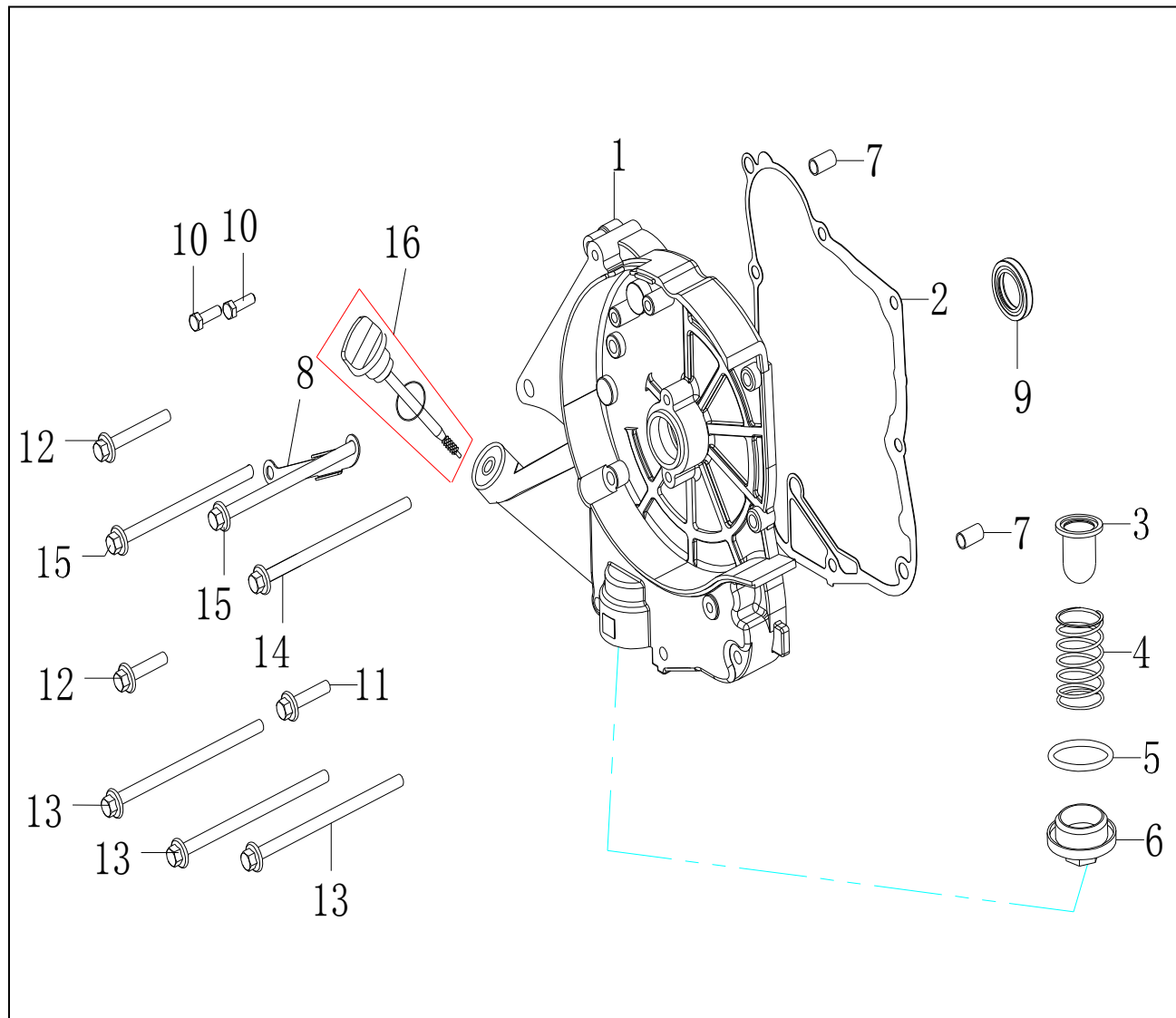
## E-6 气缸体---CYLINDER BODY

[illegible]

E-7

右曲轴箱盖

RIGHT CRANKCASE  
COVER

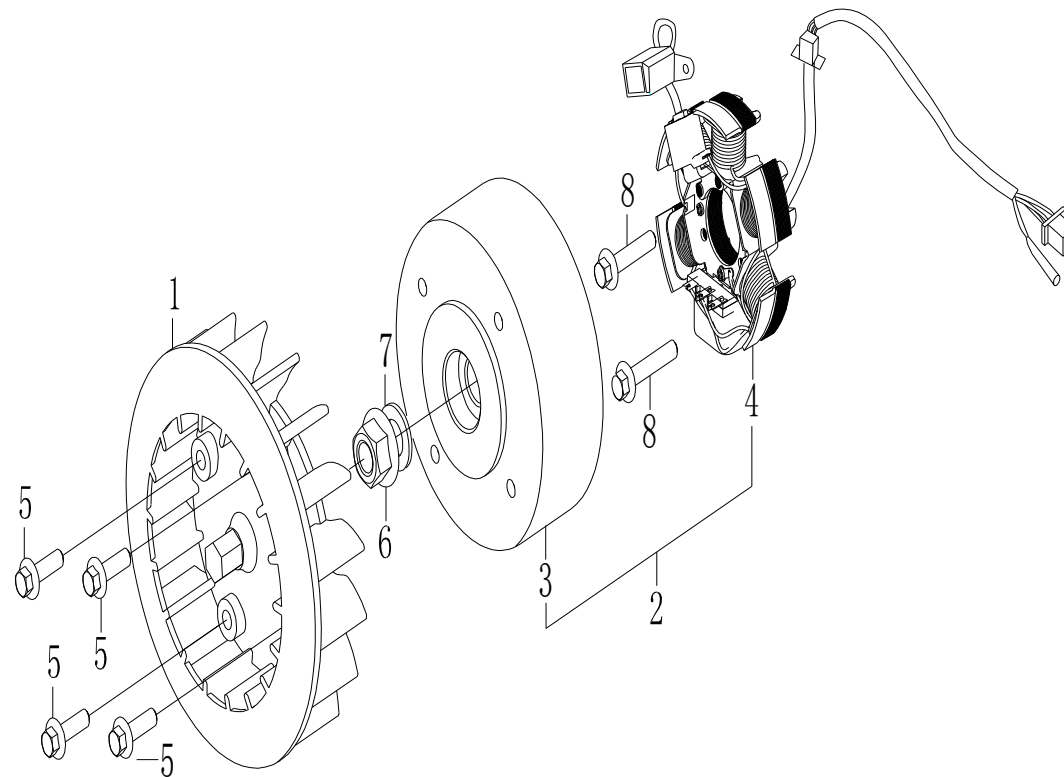


| E-7 右曲轴箱盖---RIGHT CRANKCASE COVER |                 |              |                                   |          |        |       |
|-----------------------------------|-----------------|--------------|-----------------------------------|----------|--------|-------|
| 序号                                | 代号(PART NO.)    | 名称           | DESCRIPTION                       | 数量       | 备注     | 单价\$  |
| REF NO.                           |                 |              |                                   | REGD NO. | REMARK | PRICE |
| 1                                 | 122102030010    | 右曲轴箱盖        | RIGHT CRANKCASE LID               | 1        |        |       |
| 2                                 | 122102000060    | 右曲轴箱盖垫片      | RIGHT CRANKCASE LID GASKET        | 1        |        |       |
| 3                                 | 122102031000    | 滤油网组件        | OIL SCREEN COMPONENTS             | 1        |        |       |
| 4                                 | 122102030020    | 滤油网弹簧        | OIL SCREEN SPRING                 | 1        |        |       |
| 5                                 | 122102030030    | O型圈18×3      | O-RING 18×3                       | 1        |        |       |
| 6                                 | 136204030040    | 滤油网帽盖        | OIL SCREEN CAP LID                | 1        |        |       |
| 7                                 | 122102020010    | 定位销8×14      | POSITIONING PIN 8×14              | 2        |        |       |
| 8                                 | 122102000110    | 触发线圈压线架      | TOUCH-AND-GO COIL PRESS WIRE RACK | 1        |        |       |
| 9                                 | 122102023000    | 油封 19.8×30×5 | OIL SEAL 19.8×30×5                | 1        |        |       |
| 10                                | GB5787-86.0512  | 螺栓M5×12      | FLANGE BOLT M5×12                 | 2        |        |       |
| 11                                | GB5787-86.0630  | 螺栓M6×30      | FLANGE BOLT M6×30                 | 1        |        |       |
| 12                                | GB5787-86.0635  | 螺栓M6×35      | FLANGE BOLT M6×35                 | 2        |        |       |
| 13                                | GB5787-86.0695  | 螺栓M6×95      | FLANGE BOLT M6×95                 | 3        |        |       |
| 14                                | GB5787-86.06100 | 螺栓M6×100     | FLANGE BOLT M6×100                | 1        |        |       |
| 15                                | GB5787-86.06110 | 螺栓M6×110     | FLANGE BOLT M6×110                | 2        |        |       |
| 16                                | 113102042050    | 机油尺          | OIL SCAL                          | 1        |        |       |
|                                   |                 |              |                                   |          |        |       |
|                                   |                 |              |                                   |          |        |       |
|                                   |                 |              |                                   |          |        |       |
|                                   |                 |              |                                   |          |        |       |

E-8

磁电机

GENERATOR





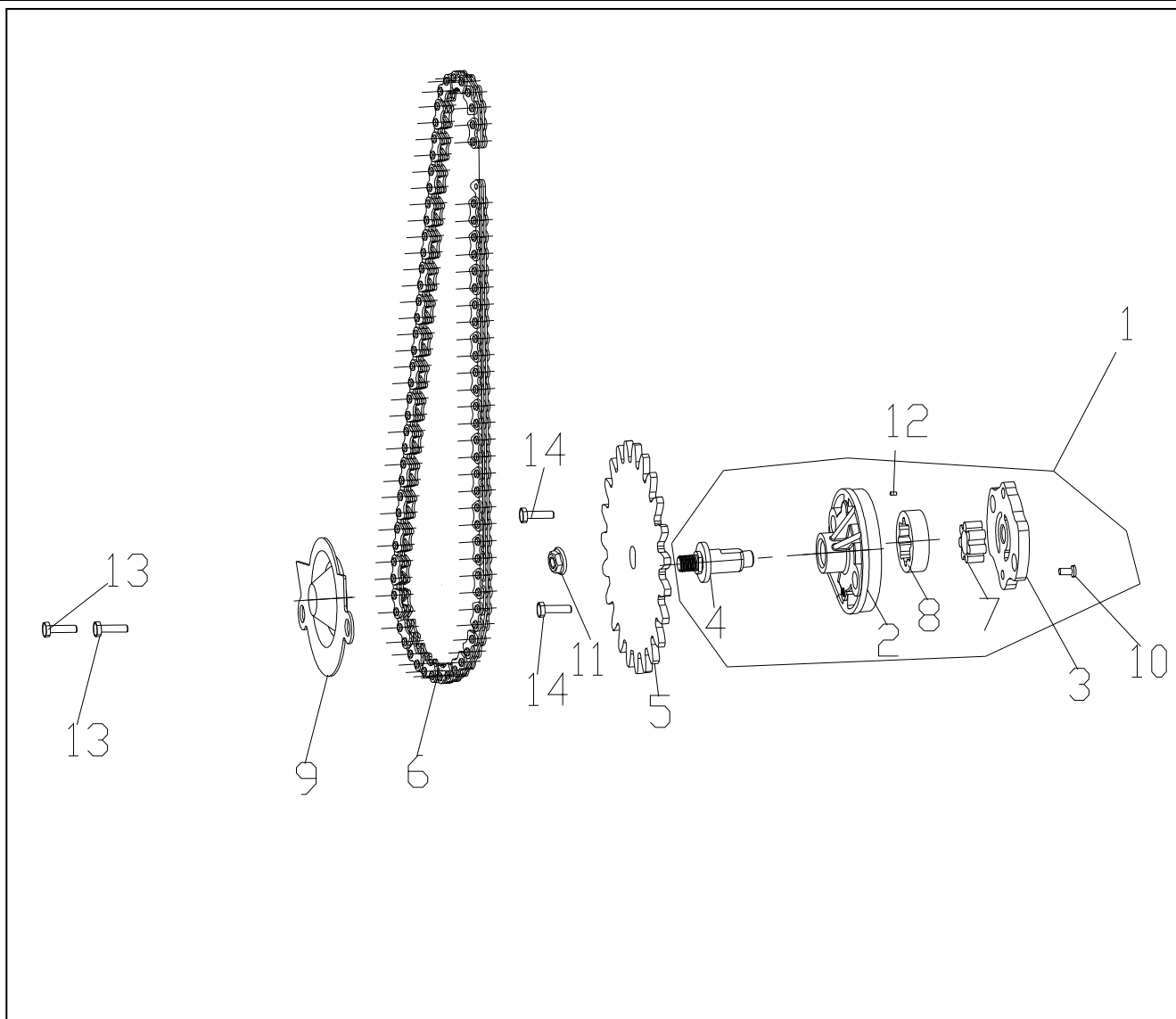
## E-8 磁电机---GENERATOR

[illegible]

E-9

机油泵

OIL PUMP

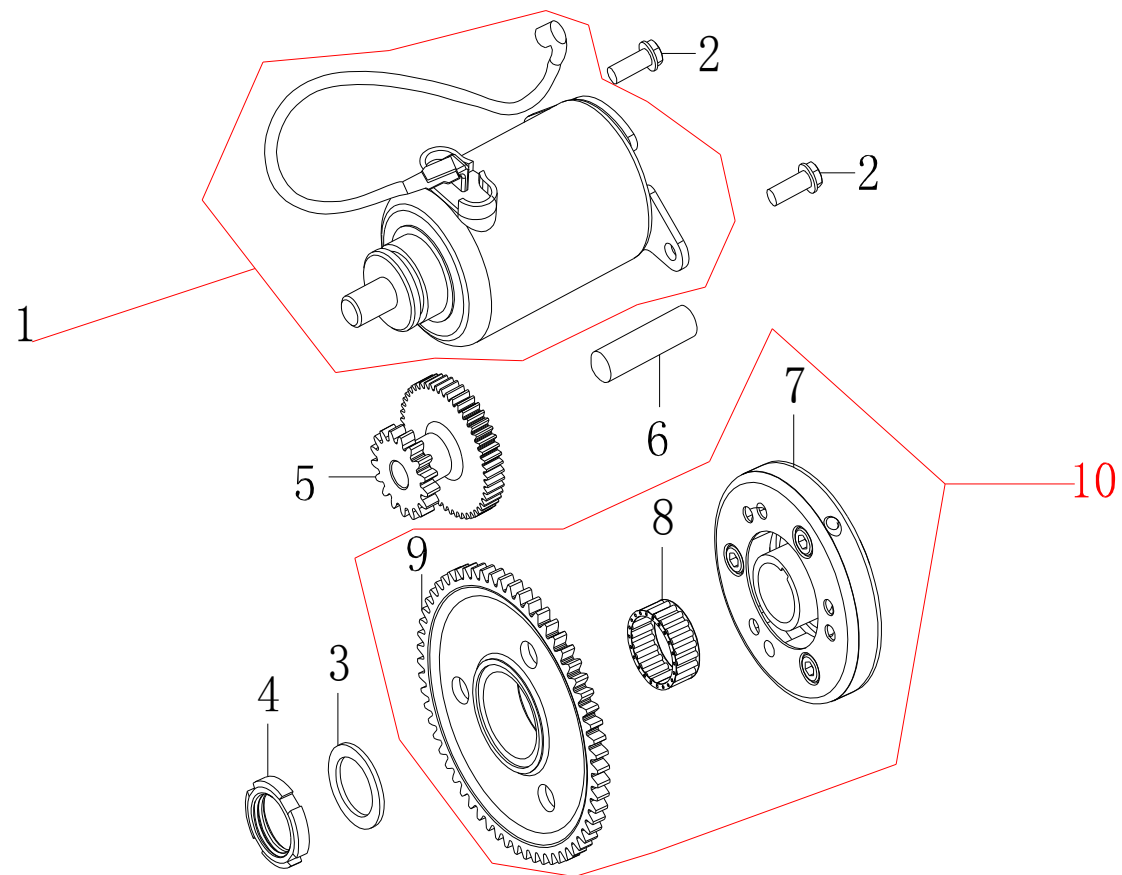


| E-9 机油泵---OIL PUMP |                |              |                                |          |        |       |
|--------------------|----------------|--------------|--------------------------------|----------|--------|-------|
| 序号                 | 代号(PART NO.)   | 名称           | DESCRIPTION                    | 数量       | 备注     | 单价\$  |
| REF NO.            |                |              |                                | REGD NO. | REMARK | PRICE |
| 1                  | 122112020000   | 机油泵组件        | MACHINE OIL PUMP COMPONENTS    | 1        |        |       |
| 2                  | 122112020030   | 机油泵体         | MACHINE OIL PUMP BODY          | 1        |        |       |
| 3                  | 122112020040   | 机油泵盖         | MACHINE OIL PUMP LID           | 1        |        |       |
| 4                  | 122112020060   | 机油泵轴         | MACHINE OIL PUMP AXIS          | 1        |        |       |
| 7                  | 122111020020   | 油泵内转子        | OIL PUMP INNER ROTOR           | 1        |        |       |
| 8                  | 122112020010   | 油泵外转子        | OIL PUMP OUTER ROTOR           | 1        |        |       |
| 10                 | GB818-85.0312  | 螺钉 M3X12     | SCREW, PAN 3X12                | 1        |        |       |
| 12                 | 122112020050   | 定位销 4X6.5    | PIN C, DOWEL 4X6.5             | 1        |        |       |
| 5                  | 122112020070   | 机油泵链轮        | MACHINE OIL PUMP CHAIN WHEEL   | 1        |        |       |
| 6                  | 122112010000   | 机油泵链条6.35X44 | MACHINE OIL PUMP CHAIN 6.35×44 | 1        |        |       |
| 9                  | 122112000010   | 机油分隔板        | MACHINE OIL PARTITION          | 1        |        |       |
| 11                 | GB6177-86.06   | 螺母M6         | NUT, FLANGE M6                 | 1        |        |       |
| 13                 | GB5787-86.0612 | 凸缘螺栓M6×12    | BOLT FLANGE 6×12               | 2        |        |       |
| 14                 | GB5787-86.0625 | 凸缘螺栓M6×25    | BOLT FLANGE 6×25               | 2        |        |       |
|                    |                |              |                                |          |        |       |
|                    |                |              |                                |          |        |       |
|                    |                |              |                                |          |        |       |
|                    |                |              |                                |          |        |       |
|                    |                |              |                                |          |        |       |
|                    |                |              |                                |          |        |       |

E-10

电起动机构

STARTING MOTOR

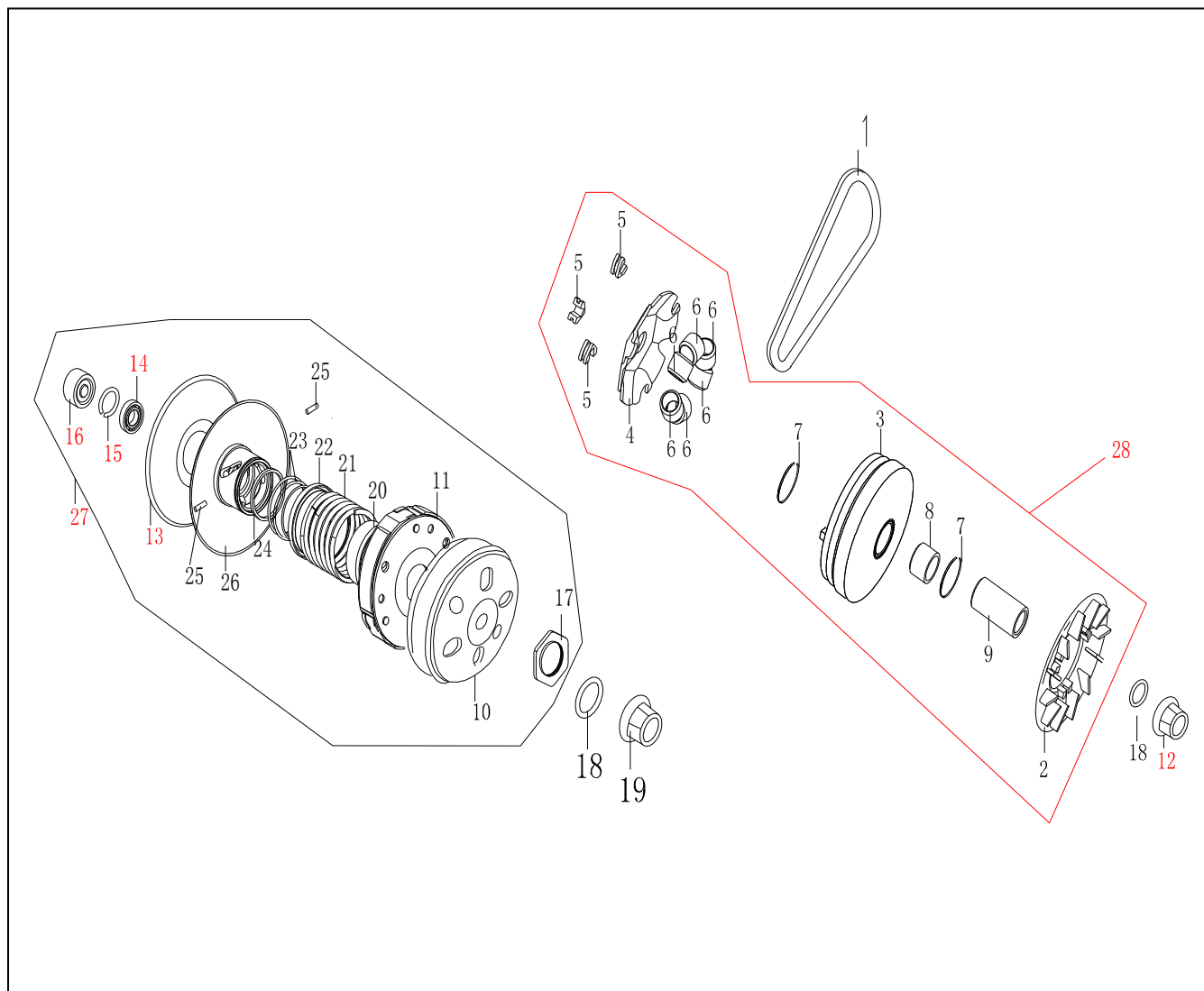


| E-10 电起动机构---STARTING MOTOR |                |              |                                       |          |        |       |
|-----------------------------|----------------|--------------|---------------------------------------|----------|--------|-------|
| 序号                          | 代号(PART NO.)   | 名称           | DESCRIPTION                           | 数量       | 备注     | 单价\$  |
| REF NO.                     |                |              |                                       | REGD NO. | REMARK | PRICE |
| 1                           | 122111010000   | 起动电机         | START MOTOR                           | 1        |        |       |
| 2                           | GB5787-86.0635 | 六角圆柱头螺钉M6×35 | HEXAGON ROUND CHAPTER BOLT M6×35      | 2        |        |       |
| 3                           | 122103000050   | 垫圈           | GASKET                                | 1        |        |       |
| 4                           | 122103000040   | 锁紧螺母M22      | LOCK TIGHT NUT M22                    | 1        |        |       |
| 5                           | 122111000010   | 电起动减速齿轮      | ELECTRICAL-START SLOWDOWN WHEEL       | 1        |        |       |
| 6                           | 122111000020   | 电起动减速齿轮轴     | ELECTRICAL-START SLOWDOWN WHEEL SHAFT | 1        |        |       |
| 7                           | 122111021000   | 离合器外罩        | CLUTCH WRAP                           | 1        |        |       |
| 8                           | 122111023000   | 滚针轴承         | NEEDLE BEARING                        | 1        |        |       |
| 9                           | 122111022000   | 起动离合器齿轮      | START CLUTCH WHEEL                    | 1        |        |       |
| 10                          | 122111020000   | 超越离合器        | CLUTCH COMPONENTS                     | 1        |        |       |
|                             |                |              |                                       |          |        |       |
|                             |                |              |                                       |          |        |       |
|                             |                |              |                                       |          |        |       |
|                             |                |              |                                       |          |        |       |
|                             |                |              |                                       |          |        |       |
|                             |                |              |                                       |          |        |       |
|                             |                |              |                                       |          |        |       |
|                             |                |              |                                       |          |        |       |
|                             |                |              |                                       |          |        |       |

E-11

传动系-1

TRANSMISSION-1



| E-11 传动系-1---TRANSMISSION-1 |               |           |  |          |        |       |
|-----------------------------|---------------|-----------|--|----------|--------|-------|
| 序号                          | 代号(PART NO.)  | 名称        | DESCRIPTION                            | 数量       | 备注     | 单价\$  |
| REF NO.                     |               |           |  | REGD NO. | REMARK | PRICE |
| 1                           | 127105000060  | 驱动皮带（加长）  | DRIVE STRAP                            | 1        |        |       |
| 12                          | GB6177-86.12  | 螺母M12     | FLANGE NUT M12                         | 1        |        |       |
| 18                          | GB97.1-85.12  | 垫片12      | GASKET 12                              | 2        |        |       |
| 19                          | GB6177-86.12  | 螺母        | FLANGE NUT M12                         | 1        |        |       |
| 27                          | 122105040000  | 从动轮总成     | FOLLOWER WHEEL COMPONENTS              | 1        |        |       |
| 10                          | 122105050000  | 离合器外壳组件   | CLUTCH SHELL COMPONENTS                | 1        |        |       |
| 11                          | 122105043000  | 被动无级变速盘组件 | PASSIVE STEPLESS SHIFT DISK COMPONENTS | 1        |        |       |
| 13                          | 122105043500  | 从动皮带盘     | DRIVEN STRAP DISK                      | 1        |        |       |
| 14                          | 122105040090  | 滚动轴承      | NEEDLE BEARING                         | 1        |        |       |
| 15                          | 122105040100  | 挡圈28      | BLOCK RING 28                          | 1        |        |       |
| 16                          | 122105040070  | 滚针轴承      | NEEDLE BEARING                         | 1        |        |       |
| 17                          | 122105040060  | 特殊螺母M28   | SPECIAL NUT M28                        | 1        |        |       |
| 20                          | 122105040030  | 套筒        | SLEEVE                                 | 1        |        |       |
| 21                          | 122105040020  | 驱动弹簧      | DRIVEN SPRING                          | 1        |        |       |
| 22                          | 122105040010  | 油封套筒      | OIL SEAL SLEEVE                        | 1        |        |       |
| 23                          | GB3452.1-1982 | O型圈       | O-RING                                 | 2        |        |       |
| 24                          | 122105040080  | 油封        | OIL SEAL                               | 2        |        |       |
| 25                          | 122105040012  | 滚珠导销      | BALL BEARING GUIDE PIN                 | 1        |        |       |
| 26                          | 122105042000  | 被动无级 变速盘  | PASSIVE STEPLESS SHIFT DISK            | 1        |        |       |
|                             |               |           |  |          |        |       |

## E-11 传动系-1---TRANSMISSION-1

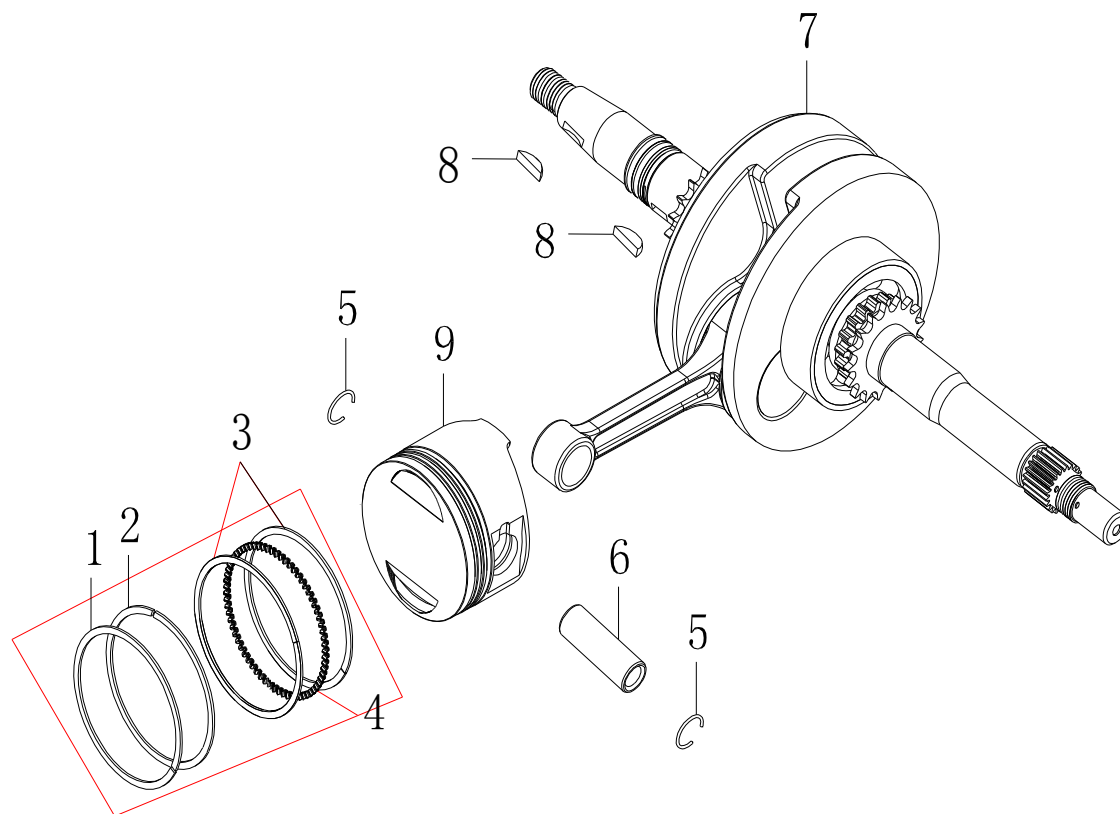
[illegible]



E-12

曲轴.活塞

CRANKSHAFT.PISTON



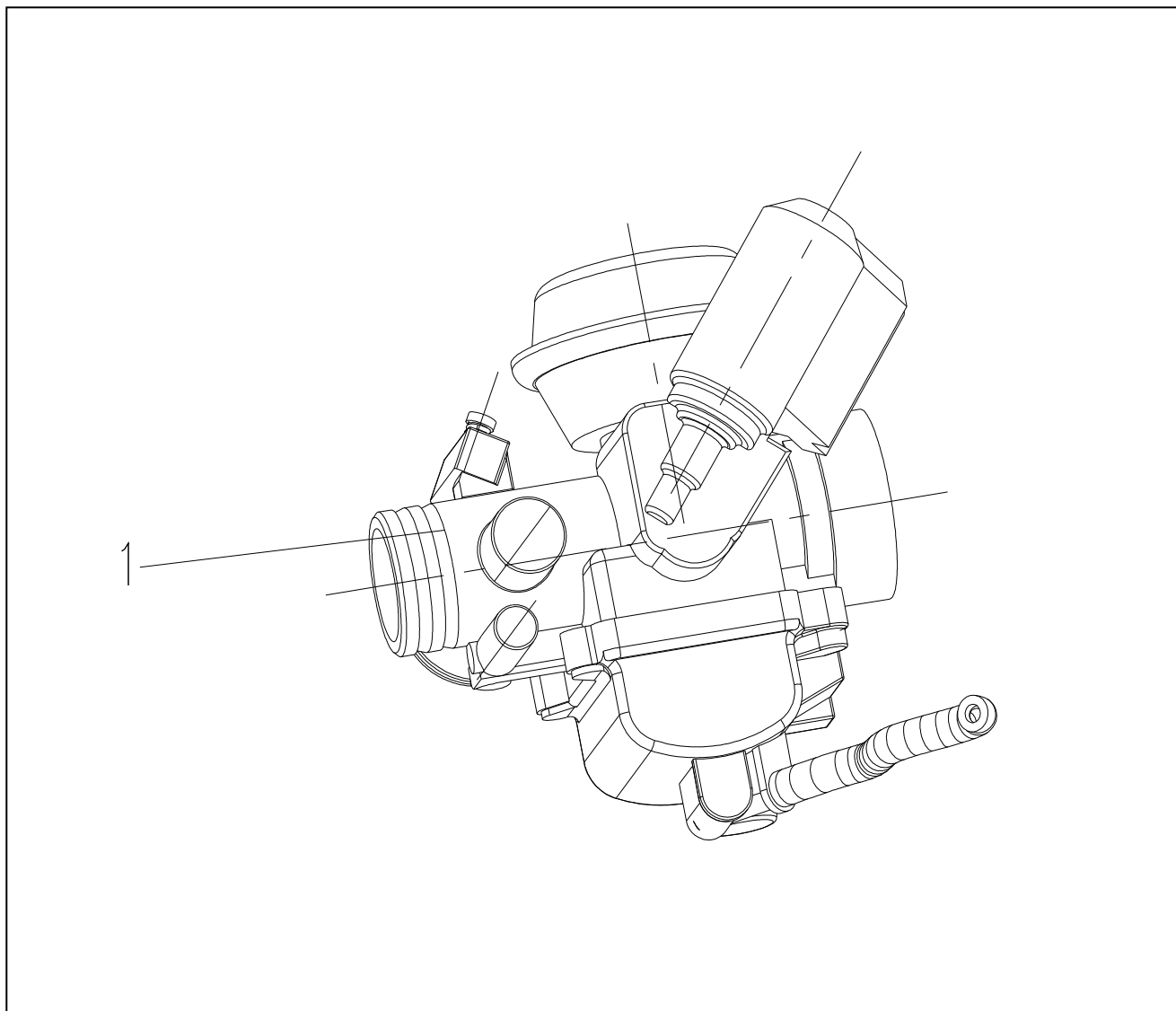
## E-12 曲轴.活塞---CRANKSHAFT.PISTON

[illegible]

**E-13**

**化油器**

**CARBURETOR**



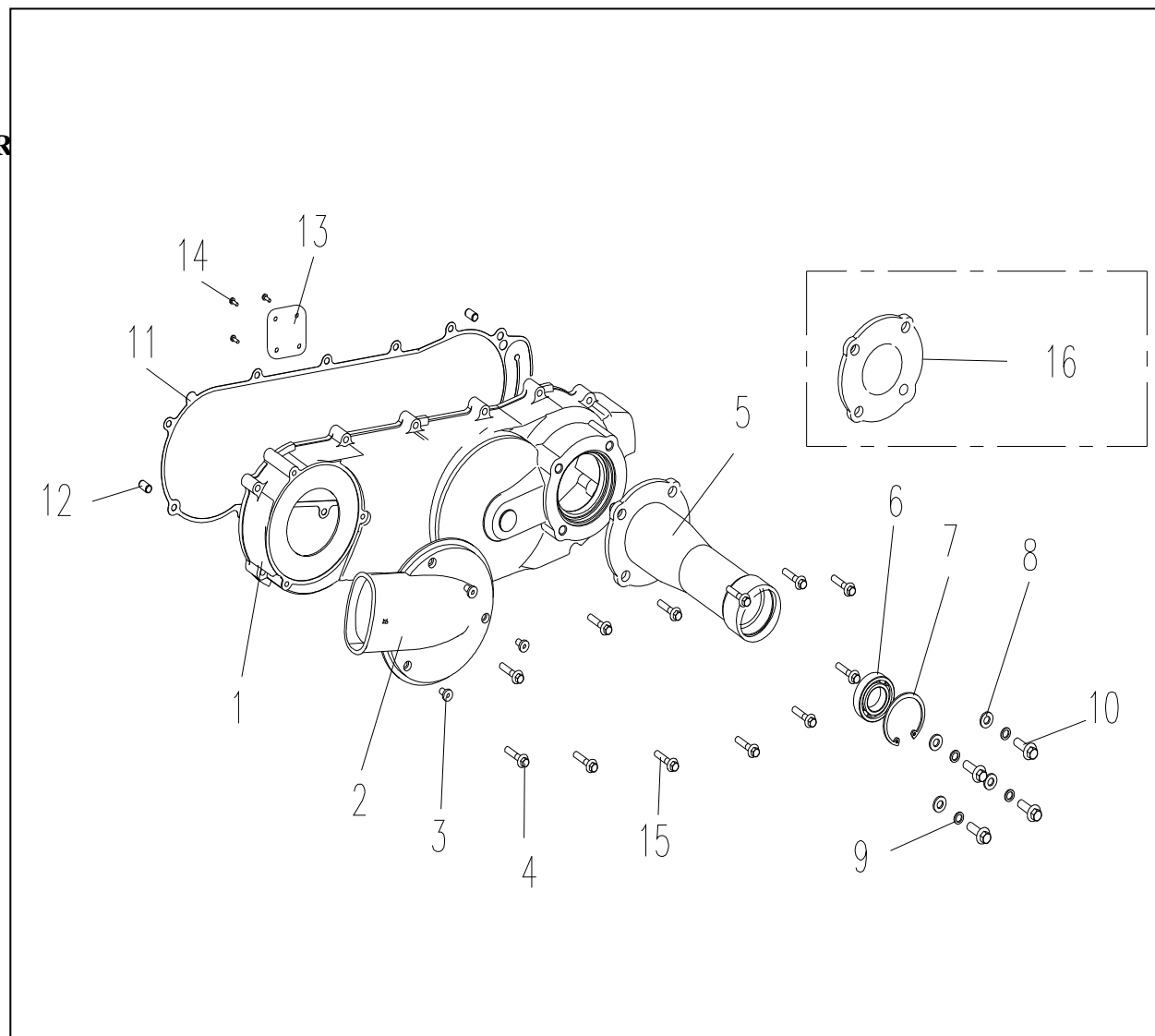
## E-13 化油器---CARBURETOR

[illegible]

**E-14**

左曲轴箱盖

**LEFT CRANKCASE COVER**

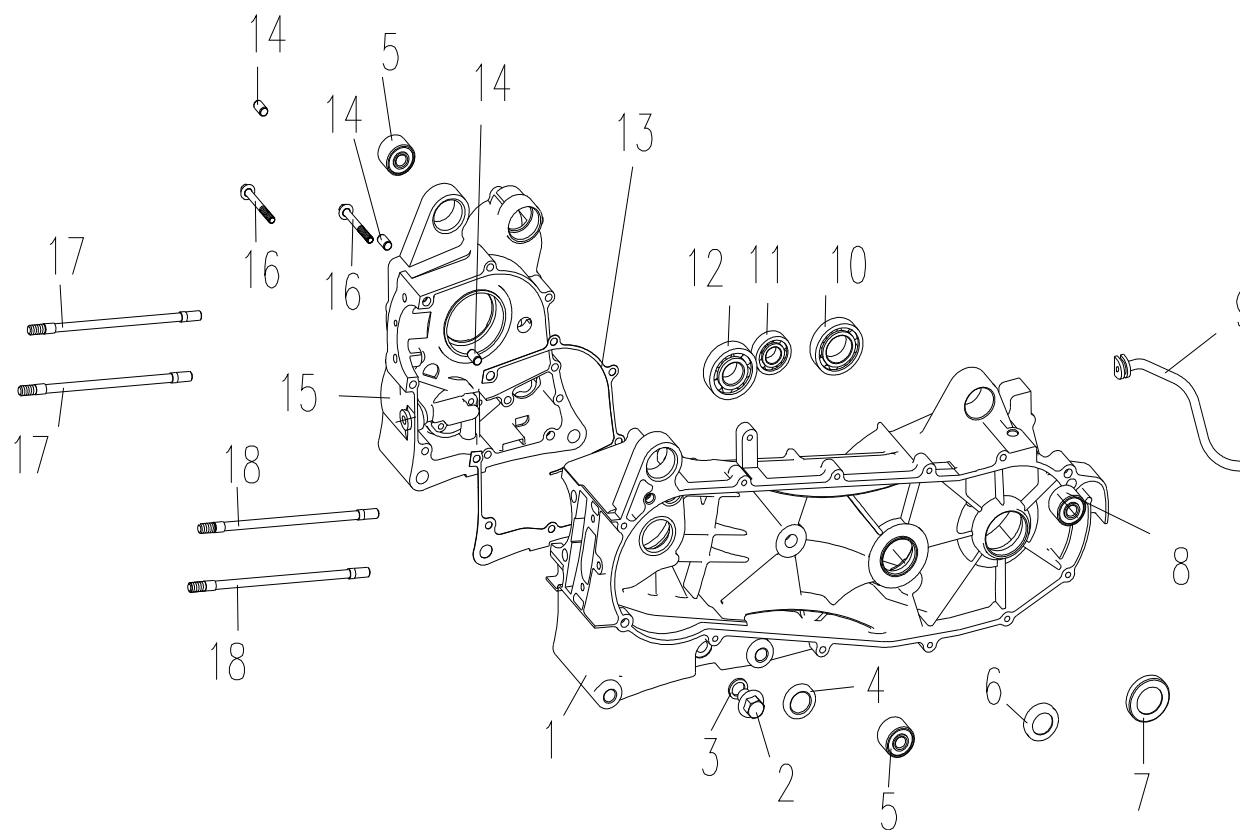


| E-14 左曲轴箱盖---LEFT CRANKCASE COVER |                  |                        |                              |          |        |  |
|-----------------------------------|------------------|------------------------|------------------------------|----------|--------|--|
| 序号                                | 代号(PART NO.)     | 名称                     | DESCRIPTION                  | 数量       | 备注     |  |
| REF NO.                           |                  |                        |                              | REGD NO. | REMARK |  |
| 1                                 | 135301020010     | 左曲轴箱盖                  | LEFT CRANKCASE LID           | 1        |        |  |
| 2                                 | 122102040030     | 左曲轴箱盖进气口               | LEFT CRANKCASE LID AIR INLET | 1        |        |  |
| 3                                 | GB 818-2000.0520 | 螺钉M5×20                | FLANGE BOLT M5×20            | 3        |        |  |
| 4                                 | GB5787-86.0645   | 螺栓M6×45                | FLANGE BOLT 6×45             | 2        |        |  |
| 5                                 | 135301020030     | 后桥壳体（左）                | REAR AXLE HOUSING(LEFT)      | 1        | 一体化用   |  |
| 6                                 | GB 276-94.62/22  | 轴承 62/22（22×50×14双面密封） | BEARING62/22(22×50×14)       | 1        |        |  |
| 7                                 | GB 894.1-86.50   | 挡圈50                   | BLOCK RING 50                | 1        |        |  |
| 8                                 | GB 95-85.08      | 垫圈 8                   | WASHER 8                     | 4        |        |  |
| 9                                 | GB 93-87.08      | 弹簧垫圈 8                 | SPING WASHER 8               | 4        |        |  |
| 10                                | GB70-85.0830     | 螺栓M8×30                | FLANGE BOLT 8×30             | 4        |        |  |
| 11                                | 135301020020     | 左箱盖垫片                  | LEFT CRANKCASE LID GASKET    | 1        |        |  |
| 12                                | 122102020010     | 定位销8×14                | POSITIONING PIN 8×14         | 2        |        |  |
| 13                                | 152FM.14-1       | 通气导板                   | VENTILATION GUIDE PLATE      | 1        |        |  |
| 14                                | GB 845-85.4295   | 螺钉ST4.2×9.5            | FLANGE BOLT ST4.2×9.5        | 4        |        |  |
| 15                                | GB5787-86.0635   | 螺栓M6×35                | FLANGE BOLT 6×35             | 10       |        |  |
| 16                                | 135301020030     | 左发兰盘                   | LEFT FLANGE PAN              | 1        | 独立悬挂用  |  |
|                                   |                  |                        |                              |          |        |  |
|                                   |                  |                        |                              |          |        |  |
|                                   |                  |                        |                              |          |        |  |
|                                   |                  |                        |                              |          |        |  |

E-15

曲轴箱

CRANKCASE



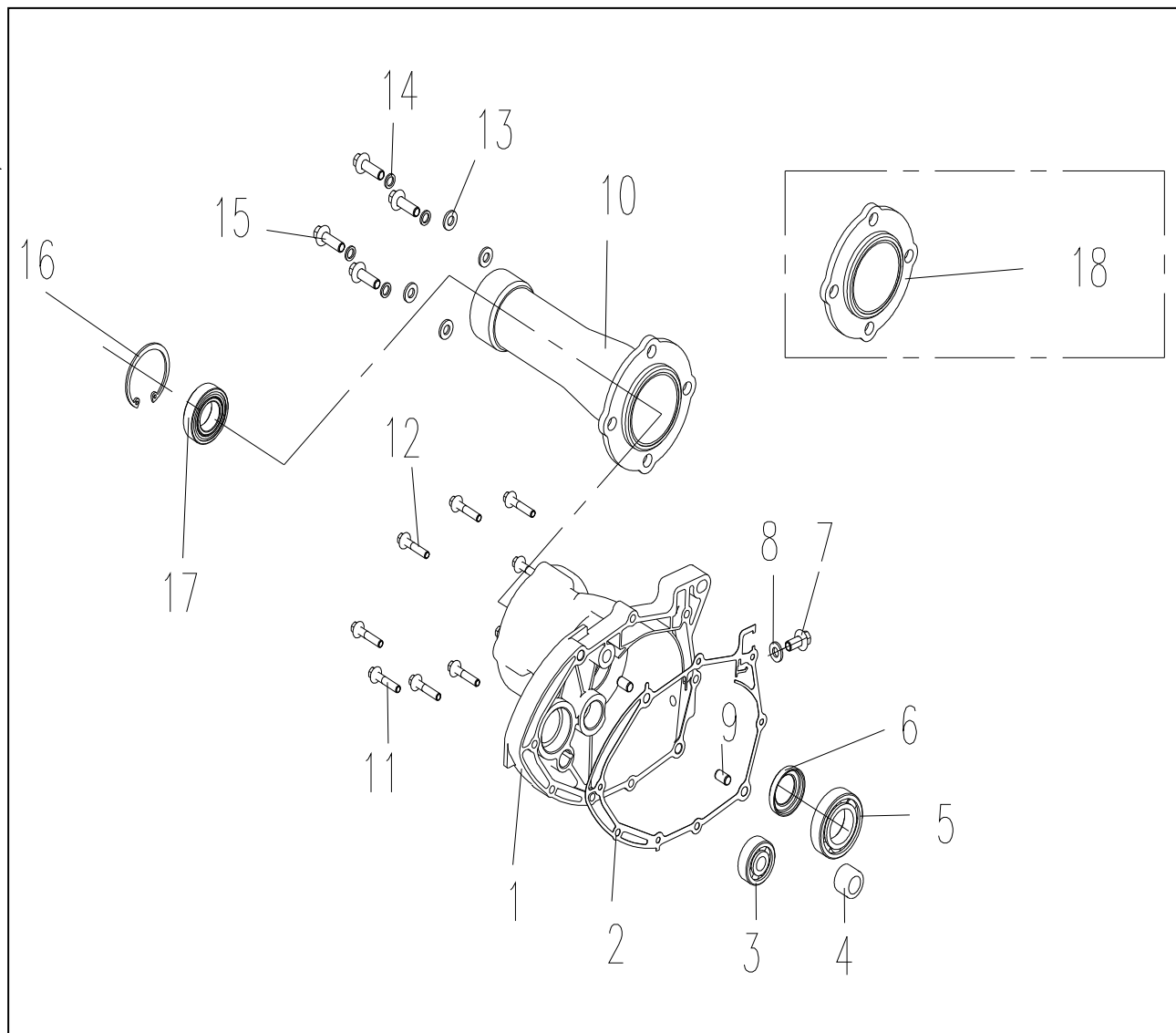
| E-15 曲轴箱---CRANKCASE |                  |             |                             |          |        |      |
|----------------------|------------------|-------------|-----------------------------|----------|--------|------|
| 序号                   | 代号(PART NO.)     | 名称          | DESCRIPTION                 | 数量       | 备注     | 单价\$ |
| REF NO.              |                  |             |                             | REGD NO. | REMARK |      |
| 1                    | 127411010100     | 左曲轴箱体       | LEFT CRANKCASE              | 1        |        |      |
| 2                    | GB6177-86.12125  | 放油螺栓12X1.25 | OIL-DISCHARGE BOLT          | 1        |        |      |
| 3                    | GB 97. 1-85. 12  | 垫圈12        | GASKET12                    | 1        |        |      |
| 4                    | 122102023000     | 油封19.8×30×5 | OIL SEAL 19.8×30×5          | 1        |        |      |
| 5                    | 122102022010     | 前减震套        | FRONT ABSORINGE COVER       | 2        |        |      |
| 6                    | GB16674-96.20326 | 油封20×32×6   | OIL SEAL 20×32×6            | 1        |        |      |
| 7                    | GB13871-92.25407 | Fb油封25×40×7 | FB OIL SEAL 20×34×7         | 1        |        |      |
| 8                    | 135201010200     | 后减震套        | BACK ABSORINGE COVER        | 1        |        |      |
| 9                    | 122411000006     | 通气管组件       | VENTILATION TUBE COMPONENTS | 1        |        |      |
| 10                   | GB276-94.6006    | 滚动轴承6006    | BEARING RADIAL BALL 6006    | 2        |        |      |
| 11                   | GB276-94.6202    | 滚动轴承6202    | BEARING RADIAL BALL6202     | 1        |        |      |
| 12                   | GB276-94.6204    | 滚动轴承6204    | BEARING RADIAL BALL6204     | 1        |        |      |
| 13                   | 127402000070     | 合箱密封垫       | CLOSING BOX AIRPROOF PAD    | 1        |        |      |
| 14                   | TMTC-02-8-14     | 定位销8×14     | POSITIONING PIN 8×14        | 2        |        |      |
| 15                   | 135201070100     | 右曲轴箱体       | RIGHT CRANKCASE             | 1        |        |      |
| 16                   | GB5787-86. 0650  | 螺栓M6×50     | FLANGE BOLT M6×50           | 1        |        |      |
| 17                   | 122202010010     | 双头螺柱BM8×199 | DUAL-HEAD STUD B M8×199     | 2        |        |      |
| 18                   | 122202020040     | 双头螺柱BM8×208 | DUAL-HEAD STUD B M8×208     | 2        |        |      |
|                      |                  |             |                             |          |        |      |
|                      |                  |             |                             |          |        |      |



E-16

传动箱盖

TRANSMISSION COVER

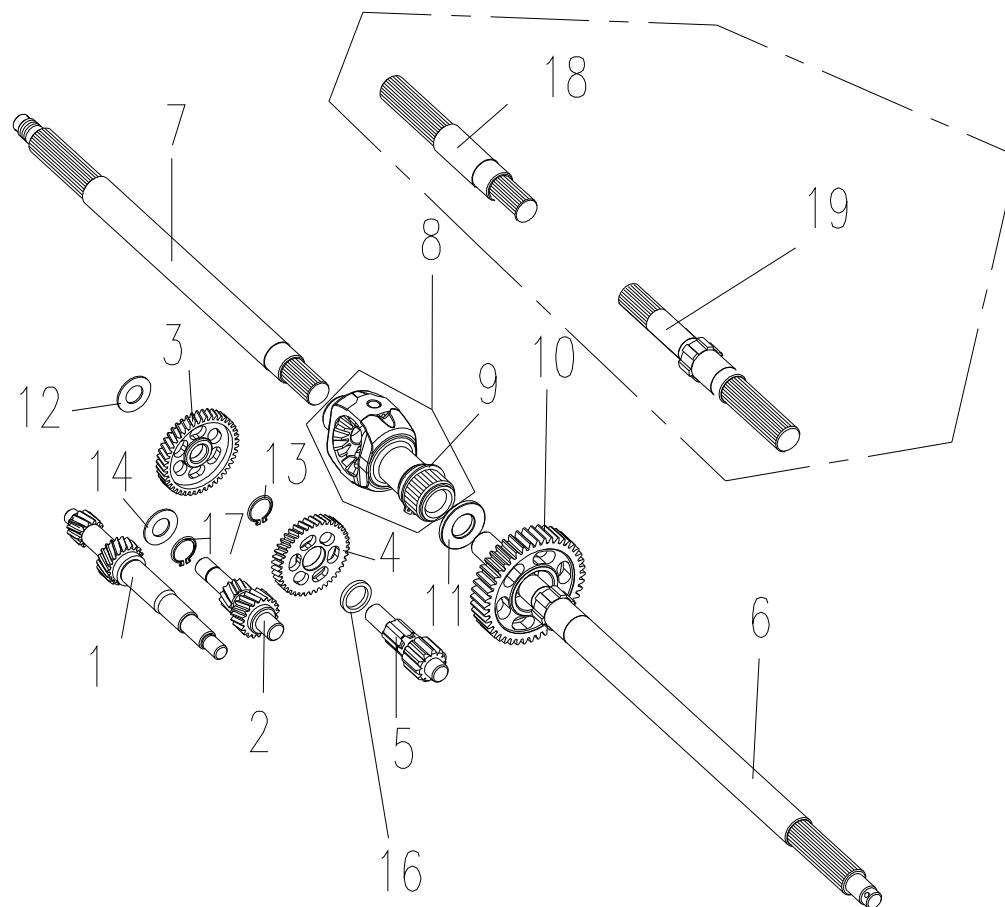


| E-16 传动箱盖---TRANSMISSION COVER |                   |                       |                          |          |        |      |
|--------------------------------|-------------------|-----------------------|--------------------------|----------|--------|------|
| 序号                             | 代号(PART NO.)      | 名称                    | DESCRIPTION              | 数量       | 备注     | 单价\$ |
| REF NO.                        |                   |                       |                          | REGD NO. | REMARK |      |
| 1                              | 135301010010      | 后齿轮箱盖（卡丁车用）           | BACK GEAR CASE LID       | 1        |        |      |
| 2                              | 122411020003      | 后齿轮箱垫片                | BACK GEAR CASE GASKET    | 1        |        |      |
| 3                              | GB 276-94.6301    | 滚动轴承6301              | BEARING RADIAL BALL      | 1        |        |      |
| 4                              | GB5801-94.NK15/16 | 滚针轴承NK15/16           | NEEDLE BEARING NK15/16   | 1        |        |      |
| 5                              | GB 276-94.6006    | 滚动轴承6006              | BEARING RADIAL BALL      | 2        |        |      |
| 6                              | GB13871-92.24419  | Fb油封24×41×9           | FB OIL SEAL 24×41×8      | 1        |        |      |
| 7                              | GB16674-96.0810   | 螺栓M8×10               | FLANGE BOLT M8×10        | 1        |        |      |
| 8                              | 122411020002      | 垫圈8                   | GASKET 8                 | 1        |        |      |
| 9                              | TMTC-02-8-14      | 定位销8×14               | POSITIONING PIN 8×14     | 2        |        |      |
| 10                             | 135301020040      | 后桥壳体（右）               | REAR AXLE HOUSING(RIGHT) | 1        |        |      |
| 11                             | GB5787-86.0635    | 螺栓M6×35               | FLANGE BOLT M6×35        | 7        |        |      |
| 12                             | GB5787-86.0645    | 螺栓M6×45               | FLANGE BOLT M6×45        | 2        |        |      |
| 13                             | GB 95-85.08       | 垫圈 8                  | WASHER 8                 | 4        |        |      |
| 14                             | GB 93-87.08       | 弹簧垫圈 8                | SPING WASHER 8           | 4        |        |      |
| 15                             | GB70-85.0830      | 螺栓M8×30               | FLANGE BOLT 8×30         | 4        |        |      |
| 16                             | GB 894.1-86.50    | 挡圈50                  | BLOCK RING 50            | 1        |        |      |
| 17                             | GB276-94.62/22    | 轴承62/22（22X50X14双面密封） | BEARING 62/22(22X50X14)  | 1        |        |      |
| 18                             | 135301020020      | 右发兰盘                  | RIGHT FLANGE PAN         | 1        |        |      |
|                                |                   |                       |                          |          |        |      |
|                                |                   |                       |                          |          |        |      |

E-17

传动系

TRANSMISSION

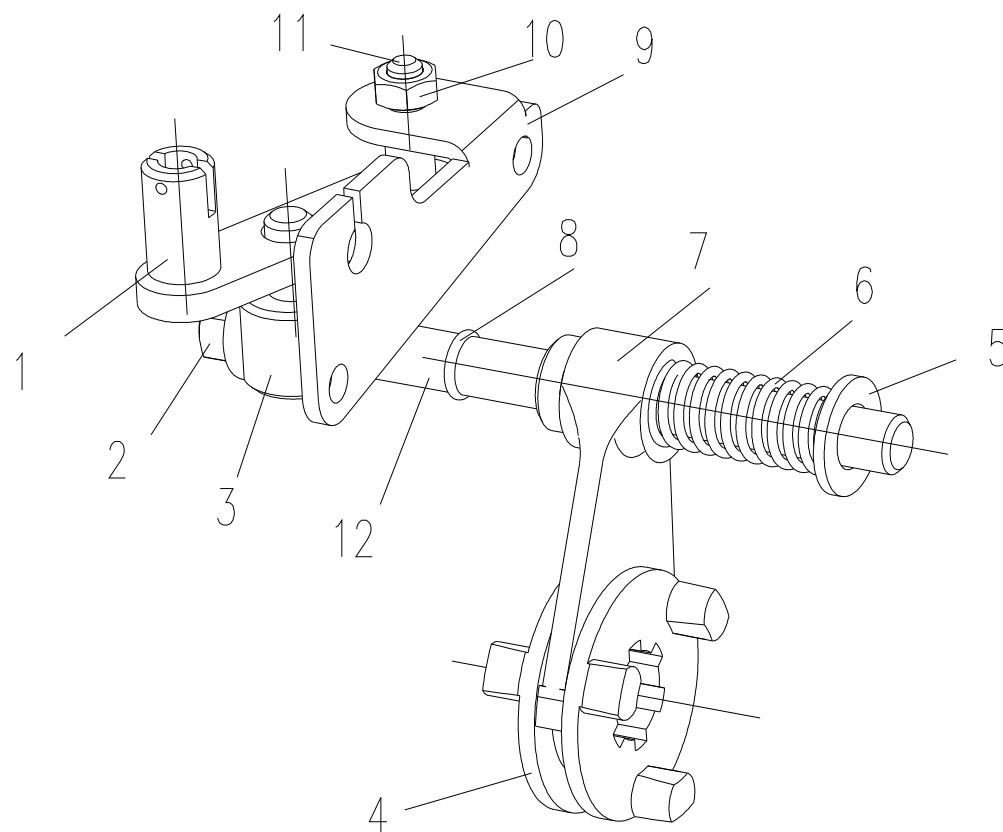


| E-17 传动系---TRANSMISSION |                 |  |  |          |        |      |
|-------------------------|-----------------|--|--|----------|--------|------|
| 序号                      | 代号(PART NO.)    | 名称                                       | DESCRIPTION                                  | 数量       | 备注     | 单价\$ |
| REF NO.                 |                 |  |  | REGD NO. | REMARK |      |
| 1                       | 135201000010    | 主轴                                       | PRINCIPAL AXIS                               | 1        |        |      |
| 2                       | 135201060010    | 倒挡轴                                      | DRAW BACK AXLE                               | 1        |        |      |
| 3                       | 135201020020    | 中间轴大齿轮                                   | THE MIDDLE AXLE GEAR                         | 1        |        |      |
| 4                       | 135201020030    | 中间轴倒挡齿轮                                  | THE MIDDLE AXLE DRAW BACK GEAR               | 1        |        |      |
| 5                       | 135201020010    | 中间轴                                      | THE MIDDLE AXLE GEAR                         | 1        |        |      |
| 6                       | 135301010010    | 左轮轴                                      | LEFT AXLE                                    | 1        |        |      |
| 7                       | 135301010020    | 右轮轴                                      | RIGHT AXLE                                   | 1        |        |      |
| 8                       | 135201030000    | 差速器                                      | DIFFERENTIAL GEAR TRAIN                      | 1        |        |      |
| 9                       | GB894.1-86.35   | 挡圈35                                     | BLOCK RING 34                                | 1        |        |      |
| 10                      | 135201030030    | 差速器齿轮                                    | DIFFERENTIAL GEAR TRAIN WHEEL                | 1        |        |      |
| 11                      | 135201030050    | 推力垫片                                     | PUSH WASHER                                  | 1        |        |      |
| 12                      | 135201000030    | 中间轴垫片                                    | THE MIDDLE AXLE WASHER                       | 1        |        |      |
| 13                      | GB894.1-86.20   | 挡圈20                                     | BLOCK RING 20                                | 1        |        |      |
| 14                      | GB95-85.1452825 | 垫圈 $\phi 14.5 \times \phi 28 \times 2.5$ | GASKET $\phi 14.5 \times \phi 28 \times 2.5$ | 1        |        |      |
| 16                      | 135201020050    | 垫片20                                     | GASKET 20                                    | 1        |        |      |
| 17                      | GB894.1-86.14   | 挡圈14                                     | BLOCK RING 14                                | 1        |        |      |
| 18                      | 135301010010-DL | 左轮轴                                      | LEFT AXLE                                    | 1        |        |      |
| 19                      | 135301010020-DL | 右轮轴                                      | RIGHT AXLE                                   | 1        |        |      |
|                         |                 |  |  |          |        |      |
|                         |                 |  |  |          |        |      |

E-18

倒挡操纵机构

REVERSE CONTROL  
MECHANISM

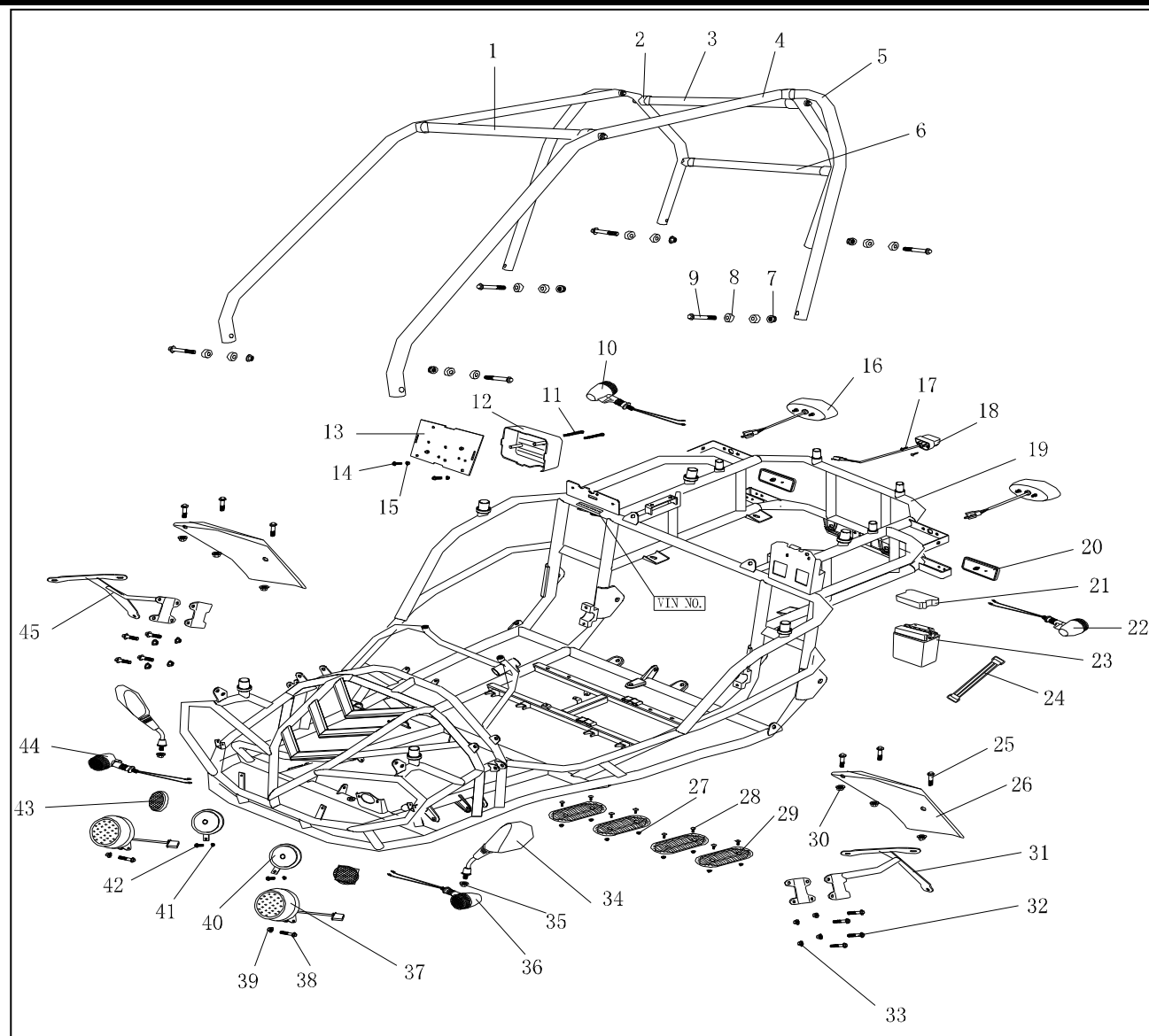


| E-18 倒挡操纵机构---REVERSE CONTROL MECHANISM |                |                                       |                        |          |        |  |
|---|----------------|---------------------------------------|------------------------|----------|--------|--|
| 序号                                      | 代号(PART NO.)   | 名称                                    | DESCRIPTION            | 数量       | 备注     |  |
| REF NO.                                 |                |                                       |                        | REGD NO. | REMARK |  |
| 1                                       | 135201040130   | 连接连杆组件                                | CONNECTING ROD ASSY.   | 1        |        |  |
| 2                                       | GB6173-2000.08 | 螺母 M8                                 | NUT M8                 | 1        |        |  |
| 3                                       | 135201040110   | 连接螺母                                  | CONNECTING NUT         | 1        |        |  |
| 4                                       | 135201020040   | 换档滑块                                  | GEAR SHIFTING SLIDE    | 1        |        |  |
| 5                                       | GB95-85.11202  | 平垫圈 $\phi 11 \times \phi 20 \times 2$ | WASHER                 | 1        |        |  |
| 6                                       | 135201040240   | 弹 簧                                   | SPRING                 | 1        |        |  |
| 7                                       | 135201040230   | 拨 叉                                   | SHIFT FORK             | 1        |        |  |
| 8                                       | 135201040220   | "O"形密封圈                               | O-RING SEALED 24.4x3.1 | 1        |        |  |
| 9                                       | 135201040120   | 固定板                                   | FIXING BOARD           | 1        |        |  |
| 10                                      | GB6173-2000.06 | 螺母 M6                                 | NUT M6                 | 1        |        |  |
| 11                                      | 135201040140   | 固定转轴                                  | FIXING AXLE            | 1        |        |  |
| 12                                      | 135201040210   | 拨叉轴                                   | SHIFT FORK AXLE        | 1        |        |  |
|   |                |                                       |                        |          |        |  |
|   |                |                                       |                        |          |        |  |
|   |                |                                       |                        |          |        |  |
|   |                |                                       |                        |          |        |  |
|   |                |                                       |                        |          |        |  |
|   |                |                                       |                        |          |        |  |
|   |                |                                       |                        |          |        |  |
|   |                |                                       |                        |          |        |  |

# F-1

## 车体系统

### FRAME GROUP



| F-1 车体系统---FRAME GROUP |                 |                   |                               |          |        |  |
|------------------------|-----------------|-------------------|-------------------------------|----------|--------|--|
| 序号                     | 代号(PART NO. )   | 名称                | DESCRIPTION                   | 数量       | 备注     |  |
| REF NO.                |                 |                   |                               | REGD NO. | REMARK |  |
| 1                      | 345238030000    | 车顶横管3             | HORIXONTAL PIPE 3 OF THE ROOF | 1        |        |  |
| 2                      | 345000000310    | 塑料衬套              | PLASTIC BUSH                  | 8        |        |  |
| 3                      | 345238020000    | 车顶横管2             | HORIXONTAL PIPE 2 OF THE ROOF | 1        |        |  |
| 4                      | 345240000000    | 侧纵梁联杆             | VERTICAL BEAM POLE            | 2        |        |  |
| 5                      | 345244000000    | 左右侧联杆             | LEFT RIGHT SIDE POLE          | 2        |        |  |
| 6                      | 345238010000    | 车顶横管1             | HORIXONTAL PIPE 1 OF THE ROOF | 1        |        |  |
| 7                      | GB/T6187.1-2000 | 全金属六角法兰面锁紧螺母M8    | NUT M8                        | 6        |        |  |
| 8                      | 345000000320    | 衬套(R垫)            | BUSH (R CUSHION)              | 12       |        |  |
| 9                      | GB/T5789-1986   | 六角法兰面螺栓M8x55      | SCREW M8×55                   | 14       |        |  |
| 10                     | 345009080000    | 后右转向灯             | REAR RIGHT TURN LIGHT         | 1        | ★      |  |
| 11                     | GB/T823-1988    | 十字槽小盘头螺钉M6×60     | SCREW M6×60                   | 2        |        |  |
| 12                     | 345009141000    | 电器盒盖              | COVER ELECTRIC ASSY           | 1        |        |  |
| 13                     | 345209146000    | 电器盒底板组件           | ELECTRIC BOARD                | 1        |        |  |
| 14                     | GB/T5789-1986   | 六角法兰面螺栓M6x20      | BOLT M6×20                    | 2        |        |  |
| 15                     | GB/T6187.1-2000 | 全金属六角法兰面锁紧螺母M6    | NUT M6                        | 2        |        |  |
| 16                     | 345009100000    | 尾灯刹车灯             | TAIL LIGHT                    | 2        | ★      |  |
| 17                     | GB/T845-1985    | 十字槽盘头自攻螺钉ST3.9X13 | CROSS RECESSED SCREW ST3.9×13 | 2        |        |  |
| 18                     | 345209200000E   | 后牌照灯              | REAR LICENSE LIGHT            | 1        |        |  |
| 19                     | 345202000000    | 车架                | FRAME COMP                    | 1        |        |  |
| 20                     | 345042000000    | 后侧反光片             | REAR REVERSE SIDE MIRROR      | 2        |        |  |



| F-1 车体系统---FRAME GROUP |                 |                |                                   |          |        |       |
|------------------------|-----------------|----------------|-----------------------------------|----------|--------|-------|
| 序号                     | 代号(PART NO.)    | 名称             | DESCRIPTION                       | 数量       | 备注     | 单价\$  |
| REF NO.                |                 |                |                                   | REGD NO. | REMARK | PRICE |
| 21                     | 345000000660    | 蓄电池盒盖          | COVER BATTERY                     | 1        |        |       |
| 22                     | 345009070000    | 后左转向灯          | REAR LEFT TURN LIGHT              | 1        | ★      |       |
| 23                     | 345009120000    | 蓄电池12V14Ah     | BATTERY                           | 1        | ★★★★   |       |
| 24                     | 345000000670    | 蓄电池固定带         | BAND BATTERY                      | 1        |        |       |
| 25                     | GB/T5789-1986   | 六角法兰面螺栓M6×14   | BOLT M6×14                        | 6        |        |       |
| 26                     | 345000000110    | 前挡泥板           | FENDER FR                         | 2        | ★      |       |
| 27                     | GB/T6187.1-2000 | 全金属六角法兰面锁紧螺母M6 | NUT M6                            | 8        |        |       |
| 28                     | GB/T819-2000    | 十字槽大盘头螺钉M6×12  | CROSS RECESSED SCREW M6×12        | 8        |        |       |
| 29                     | 345000000620    | 脚踏皮            | FOOT PLATE RUBBER                 | 4        |        |       |
| 30                     | GB/T6187.1-2000 | 全金属六角法兰面锁紧螺母M6 | NUT M6                            | 6        |        |       |
| 31                     | 345030010000    | 前左挡泥板支架        | FENDER FR. SUPPORT                | 1        | ★      |       |
| 32                     | GB/T5789-1986   | 六角法兰面螺栓M8×25   | BOLT M8×25                        | 8        |        |       |
| 33                     | GB/T6187.1-2000 | 全金属六角法兰面锁紧螺母M8 | NUT M8                            | 8        |        |       |
| 34                     | 345219000000    | 左后视镜           | REAR VIEW MIRROR                  | 2        | ★      |       |
| 35                     | GB/T6187.1-2000 | 全金属六角法兰面锁紧螺母M8 | NUT M8                            | 2        |        |       |
| 36                     | 345009050000    | 前左转向灯          | FRONT LEFT CHANGE DIRECTION LIGHT | 1        |        |       |
| 37                     | 346009110000    | 前照灯            | HEADLIGHT UNIT                    | 2        | ★      |       |
| 38                     | GB/T5789-1986   | 六角法兰面螺栓M8×50   | BOLT M8×50                        | 2        |        |       |
| 39                     | GB/T6187.1-2000 | 全金属六角法兰面锁紧螺母M8 | NUT M8                            | 2        |        |       |
| 40                     | 345009090000    | 喇叭             | HORN                              | 2        |        |       |

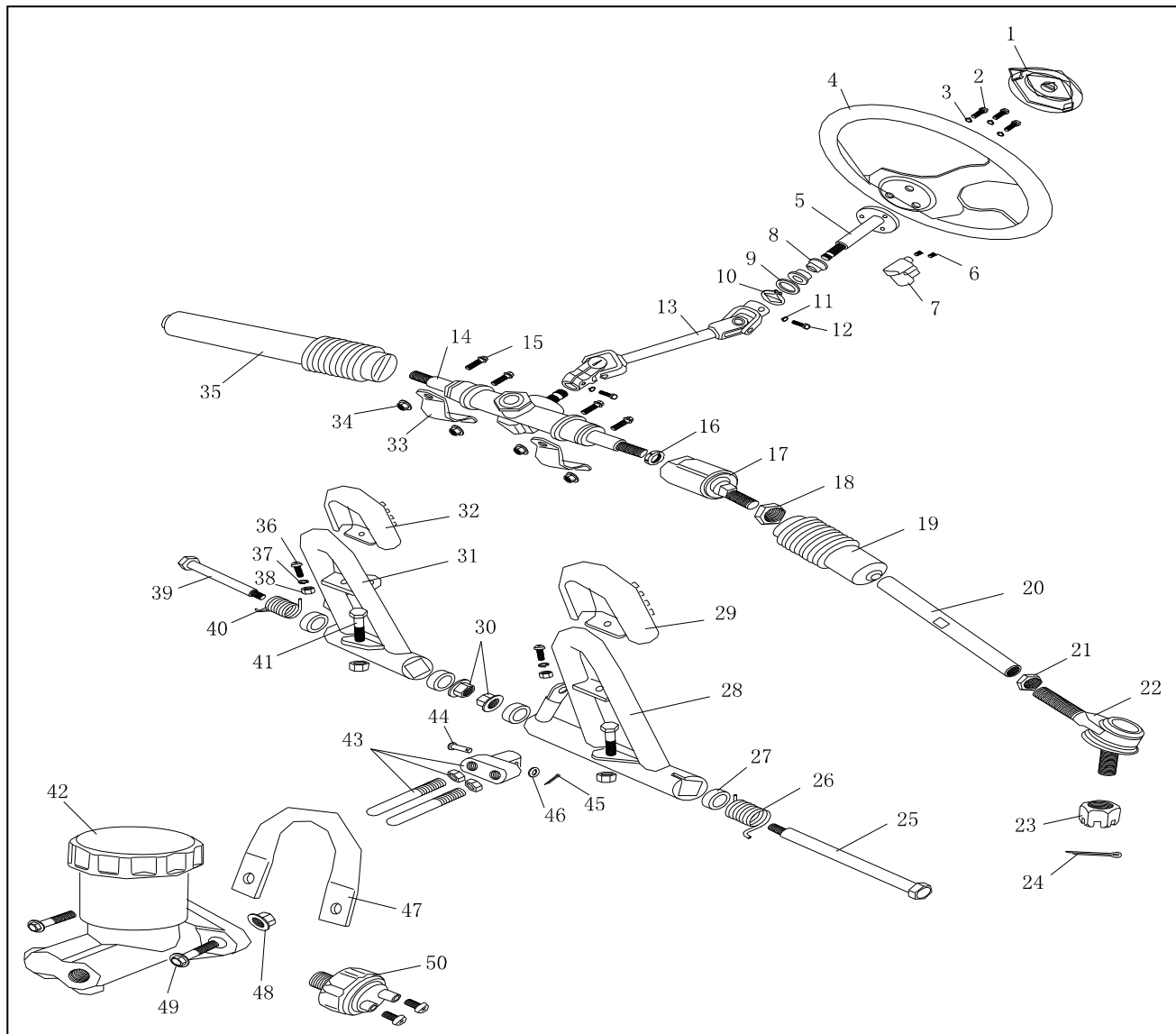
## F-1 车体系统---FRAME GROUP

[illegible]

## F-2

### 转向系统

### STEERING SHAFT ASSY.



| F-2 转向系统---STEERING SHAFT ASSY. |                |   |   |          |        |       |
|---------------------------------|----------------|---|---|----------|--------|-------|
| 序号                              | 代号(PART NO.)   | 名称  | DESCRIPTION   | 数量       | 备注     | 单价\$  |
| REF NO.                         |                |   |   | REGD NO. | REMARK | PRICE |
| 1                               | 345009010000   | 方向盘盖                                      | STEERING WHEEL COVER                                    | 1        |        |       |
| 2                               | GB/T5783-2000  | 六角头螺栓M6×14                                | BOLT M6×14  | 3        |        |       |
| 3                               | GB/T93-1987    | 标准型弹簧垫圈6                                  | SPRING WASHER 6   | 3        |        |       |
| 4                               | 345000040220   | 方向盘                                       | STEERING WHEEL  | 1        |        |       |
| 5                               | 345006032000   | 方向盘安装轴                                    | STEERING WHEEL AXLE                                     | 1        |        |       |
| 6                               | GB/T819.2-1997 | 十字槽沉头螺钉M6×10                              | CROSS FLAT HEAD SCREWS M6×10                            | 2        |        |       |
| 7                               | 345043000000   | 转向锁                                       | TURNING LOCK  | 1        |        |       |
| 8                               | 345000040170   | 方向盘安装尼龙衬套                                 | STEERING WHEEL BUSH                                     | 2        | ★      |       |
| 9                               | 345000000180   | 方向盘安装垫圈 $\phi 21 \times \phi 28 \times 2$ | STEERING WHEEL WASHER $\phi 21 \times \phi 28 \times 2$ | 1        |        |       |
| 10                              | GB/T894.1-1986 | 轴用弹性挡圈20                                  | CIRCLIPS FOR HOLE 20                                    | 1        |        |       |
| 11                              | GB/T93-1987    | 标准型弹簧垫圈8                                  | SPRING WASHER 8   | 2        |        |       |
| 12                              | GB/T5783-2000  | 六角头螺栓M8×25                                | BOLT M8×25  | 2        |        |       |
| 13                              | 345006033000   | 万向节                                       | DIRECTION UNITE AXLE                                    | 1        |        |       |
| 14                              | 345006031000   | 方向机                                       | DIRECTION MACHINE                                       | 1        |        |       |
| 15                              | GB/T5789-1986  | 六角法兰面螺栓M8x25                              | BOLT M8×25  | 4        |        |       |
| 16                              | GB810-1988     | 小圆螺母 M16×1.5                              | SMALL ROUND NUTS M16×1.5                                | 1        |        |       |
| 17                              | 345006035000   | 球头连接副                                     | STEEING BALL JOINT                                      | 2        |        |       |
| 18                              | GB/T6170-2000  | I 型六角螺母M10X1.25                           | NUT M10X1.25  | 2        |        |       |
| 19                              | 345006030020   | 防尘套（短）                                    | DUST COVER L BALL JOINT                                 | 1        |        |       |
| 20                              | 345006034000   | 拉杆  | ROD END   | 2        |        |       |

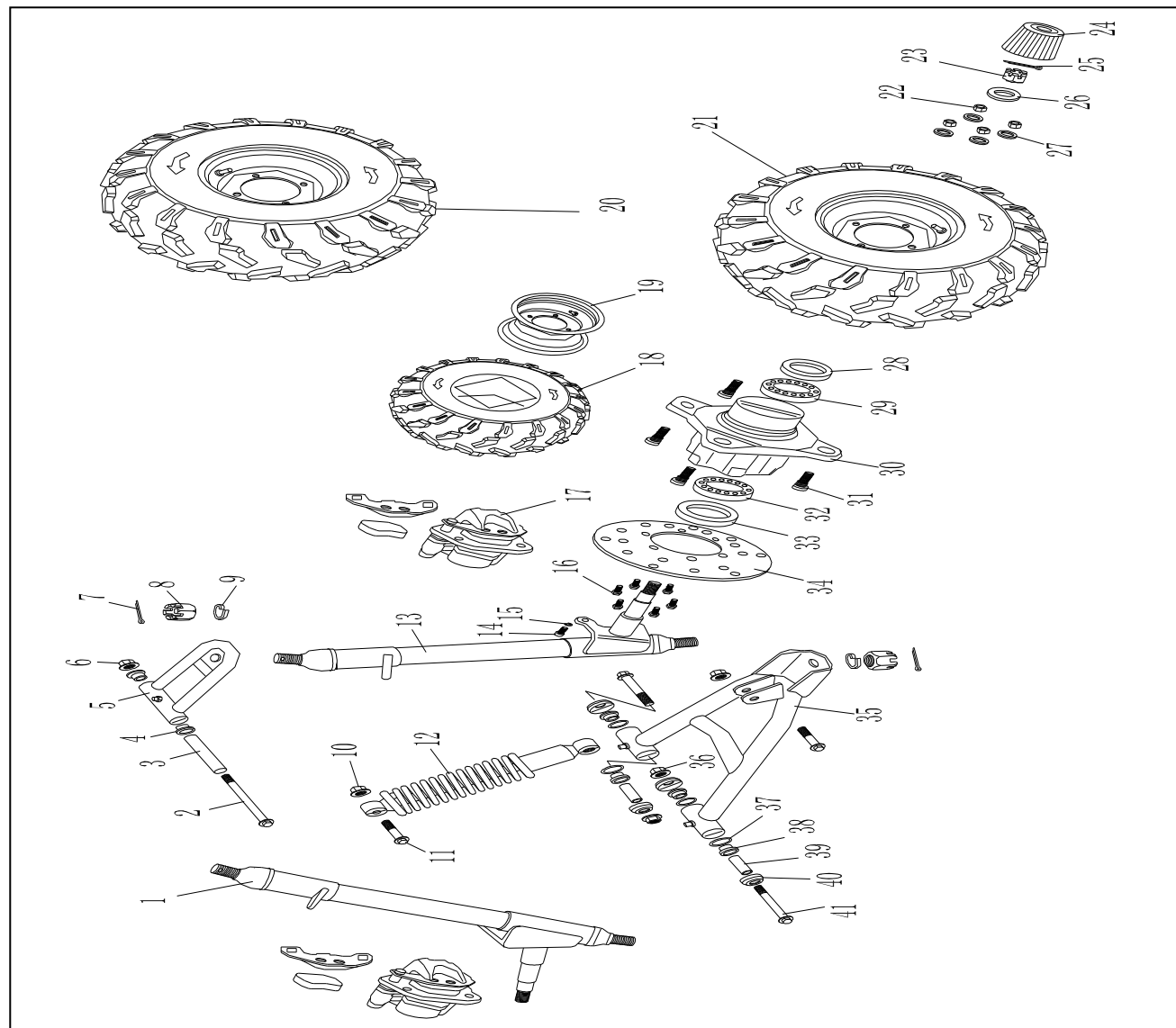
| F-2 转向系统---STEERING SHAFT ASSY. |                 |                  |                                |          |        |       |
|---------------------------------|-----------------|------------------|--------------------------------|----------|--------|-------|
| 序号                              | 代号(PART NO.)    | 名称               | DESCRIPTION                    | 数量       | 备注     | 单价\$  |
| REF NO.                         |                 |                  |                                | REGD NO. | REMARK | PRICE |
| 21                              | GB/T6170-1986   | I 型六角螺母M10X1.25  | NUT M10X1.25                   | 2        |        |       |
| 22                              | 345006034000    | 转向节球头            | STEEING BALL                   | 2        |        |       |
| 23                              | GB/T6178-1986   | 1型六角开槽螺母M10×1.25 | SLOTTED NUTS M10×1.25          | 2        |        |       |
| 24                              | GB/T91-2000     | 开口销2×20          | SPLIT PINS 2×20                | 2        |        |       |
| 25                              | 345000000200    | 制动踏板轴M8×φ12×220  | BOLT BRAKE PEDAL M8×φ12×220    | 1        |        |       |
| 26                              | 345000000590    | 制动踏板扭簧           | BRAKE PEDAL RETURN SPRING      | 1        | ★      |       |
| 27                              | 345000000220    | 右侧尼龙衬套           | BUSH PEDAL                     | 4        |        |       |
| 28                              | 345032000000    | 制动踏板组合           | BRAKE PEDAL COMP               | 1        |        |       |
| 29                              | 345000000410    | 脚踏皮STOP          | PEDAL PAD (STOP)               | 1        |        |       |
| 30                              | GB/T6187.1-2000 | 全金属六角法兰面锁紧螺母M8   | NUT M8                         | 2        |        |       |
| 31                              | 345033000000    | 油门踏板组合           | THROTTLE PEDAL COMP            | 1        |        |       |
| 32                              | 345000000420    | 脚踏皮GO            | PEDAL PAD (GO)                 | 1        |        |       |
| 33                              | 345000000160    | 转向机构夹            | BRACKET STEERING GEAR          | 2        |        |       |
| 34                              | GB/T6187.1-2000 | 全金属六角法兰面锁紧螺母M8   | NUT M8                         | 4        |        |       |
| 35                              | 345006030010    | 防尘套(长)           | DUST COVER R BALL JOINT        | 1        |        |       |
| 36                              | GB/T818-2000    | 十字槽盘头螺钉M5×16     | CROSS RECESS SCREWS M5×16      | 2        |        |       |
| 37                              | GB/T93-1987     | 标准型弹簧垫圈5         | SPRING WASHER 5                | 2        |        |       |
| 38                              | GB/T6187.1-2000 | 全金属六角法兰面锁紧螺母M5   | NUT M5                         | 2        |        |       |
| 39                              | 345000000230    | 油门踏板轴M8×φ12×148  | BOLT THROTTLE PEDAL M8×φ12×148 | 1        |        |       |
| 40                              | 345000000540    | 油门踏板扭簧           | THROTTLE PEDAL RETURN SPRING   | 1        | ★      |       |

| F-2 转向系统---STEERING SHAFT ASSY. |                 |                |                   |          |        |       |
|---------------------------------|-----------------|----------------|-------------------|----------|--------|-------|
| 序号                              | 代号(PART NO.)    | 名称             | DESCRIPTION       | 数量       | 备注     | 单价\$  |
| REF NO.                         |                 |                |                   | REGD NO. | REMARK | PRICE |
| 41                              | GB/T5783-2000   | 六角头螺栓M8×40     | BOLT M8×40        | 2        |        |       |
| 42                              | 345212000000    | 总泵总成           | MASTER CYLINDER   | 1        |        |       |
| 43                              | 345000000750    | 主压杆            | PRESSING ROD      | 1        |        |       |
| 44                              | GB/T882-1986    | 销轴6×26         | PIN 6×26          | 1        |        |       |
| 45                              | GB/T91-2000     | 开口销1.6×14      | SPLIT PINS 1.6×14 | 1        |        |       |
| 46                              | GB/T5287-1985   | 平垫圈6           | WASHER 6          | 1        |        |       |
| 47                              | 345000000600    | 防护架            | PROTECTION SHELF  | 1        |        |       |
| 48                              | GB/T6187.1-2000 | 全金属六角法兰面锁紧螺母M8 | NUT M8            | 2        |        |       |
| 49                              | GB/T5789-1986   | 六角法兰面螺栓M8x30   | BOLT M8×30        | 2        |        |       |
| 50                              | 346106031000    | 压力开关           |                   | 1        |        |       |
|                                 |                 |                |                   |          |        |       |
|                                 |                 |                |                   |          |        |       |
|                                 |                 |                |                   |          |        |       |
|                                 |                 |                |                   |          |        |       |
|                                 |                 |                |                   |          |        |       |
|                                 |                 |                |                   |          |        |       |
|                                 |                 |                |                   |          |        |       |
|                                 |                 |                |                   |          |        |       |
|                                 |                 |                |                   |          |        |       |
|                                 |                 |                |                   |          |        |       |

### F-3

### 摇臂系统

### SUSPENSION ARM ASSY.



| F-3 摇臂系统---SUSPENSION ARM ASSY. |                 |                    |                              |          |        |      |
|---------------------------------|-----------------|--------------------|------------------------------|----------|--------|------|
| 序号                              | 代号(PART NO.)    | 名称                 | DESCRIPTION                  | 数量       | 备注     | 单价\$ |
| REF NO.                         |                 |                    |                              | REGD NO. | REMARK |      |
| 1                               | 345206020000    | 前轮右摇柱分总成           | SUPPORT STRUT AND SPINDLE. R | 1        | ★      |      |
| 2                               | GB/T5789-1986   | 六角法兰面螺栓M8×1.25×105 | BOLT M8×1.25×105             | 2        |        |      |
| 3                               | 345000000130    | 上摇臂衬管φ8.5×φ12×85.5 | COLLER UPPER SUSPENSION ARM  | 2        |        |      |
| 4                               | 345000000120    | 上摇臂尼龙衬套            | BUSH UPPER SUSPENSION ARM    | 4        | ★      |      |
| 5                               | 345031010000    | 前轮上摇臂              | UPPER SUSPENSION ARM         | 2        |        |      |
| 6                               | GB/T6187.1-2000 | 全金属六角法兰面锁紧螺母M8     | NUT M8                       | 2        |        |      |
| 7                               | GB/T91-2000     | 开口销2.5×25          | PIN. COTTER 2.5×25           | 4        |        |      |
| 8                               | GB/T6178-1986   | 1型六角开槽螺母M12×1.25   | SLOTTED NUTS M12×1.25        | 4        |        |      |
| 9                               | GB/T93-1987     | 标准型弹簧垫圈12          | WASHER LOCK 12               | 4        |        |      |
| 10                              | GB/T6187.1-2000 | 全金属六角法兰面锁紧螺母M10    | NUT M10×1.25                 | 4        |        |      |
| 11                              | GB/T5789-1986   | 六角法兰面螺栓M10x1.25x40 | BOLT M10×1.25×40             | 4        |        |      |
| 12                              | 345003010000    | 前减震器总成L=305        | CUSHION ASSY. FR L=305       | 2        | ★★     |      |
| 13                              | 345206010000    | 前轮左摇柱分总成           | SUPPORT STRUT AND SPINDLE. L | 1        |        |      |
| 14                              | GB/T70.1-2000   | 内六角圆柱头螺钉M8X14      | BOLT STRAP M8×14             | 4        |        |      |
| 15                              | GB/T93-1987     | 标准型弹簧垫圈8           | WASHER LOCK 8                | 4        |        |      |
| 16                              | GB/T6170-2000   | 六角头螺栓M6×14         | HEXAGON NUTS M6×14           | 12       |        |      |
| 17                              | 345212000000    | 前刹分泵总成(左、右)        | FRONT BRAKE CALIPER          | 2        |        |      |
| 18                              | 345004011000    | 前轮胎                | TIRE. FR 19×7-8              | 2        | ★      |      |
| 19                              | 345004012000    | 前轮辋                | RIM. FR                      | 2        |        |      |
| 20                              | 345004020000    | 左前轮总成              | FR. WHEEL ASSY. R            | 1        | ★      |      |

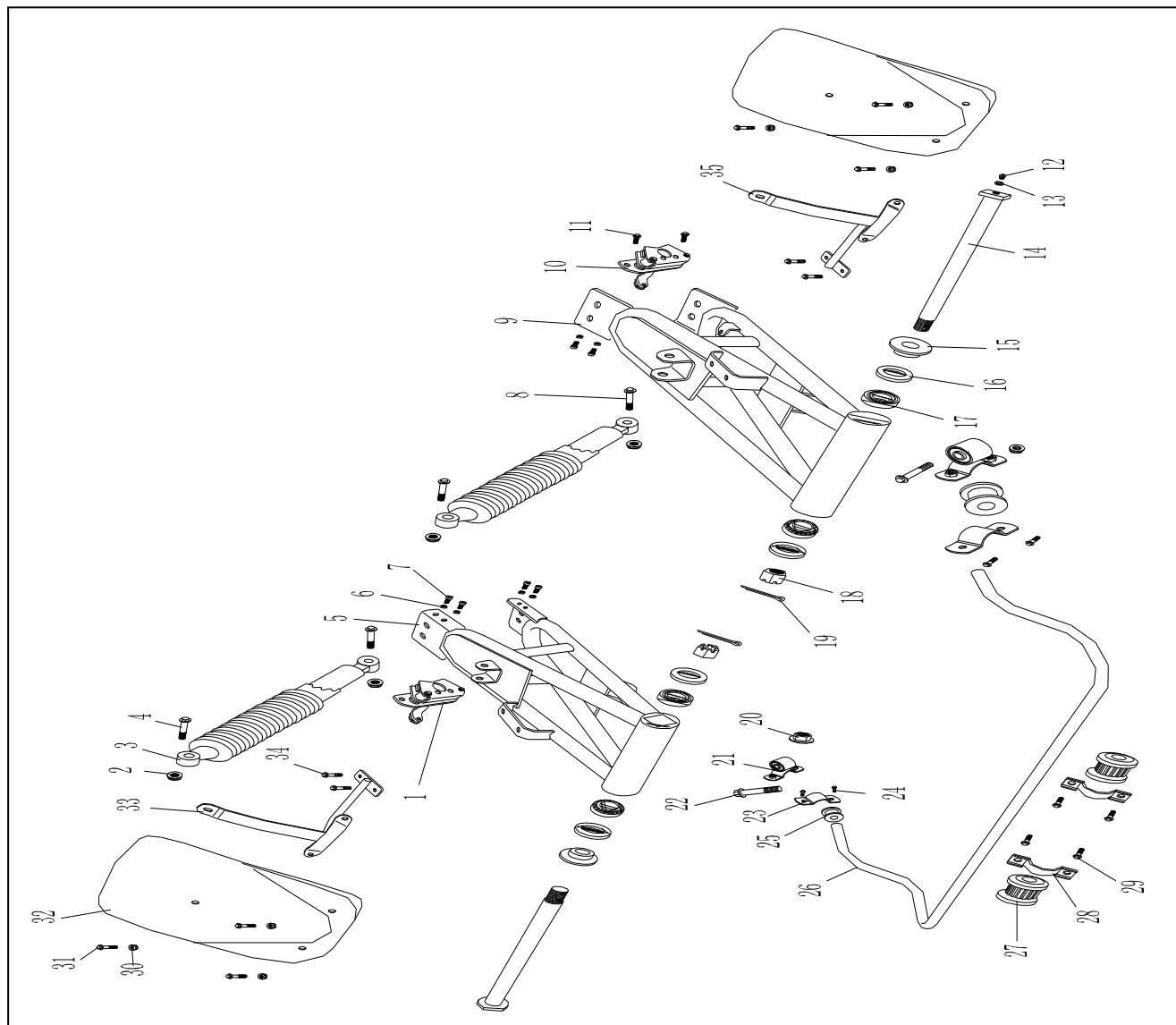


| F-3 摇臂系统---SUSPENSION ARM ASSY. |                 |                    |                               |          |        |      |
|---------------------------------|-----------------|--------------------|-------------------------------|----------|--------|------|
| 序号                              | 代号(PART NO.)    | 名称                 | DESCRIPTION                   | 数量       | 备注     | 单价\$ |
| REF NO.                         |                 |                    |                               | REGD NO. | REMARK |      |
| 21                              | 345004010000    | 右前轮总成              | FR. WHEEL ASSY. L             | 1        | ★      |      |
| 22                              | 345000000760    | 轮子固定螺母M10×1.25     | TIRE. NUT M10×1.25            | 8        |        |      |
| 23                              | GB/T9457-1988   | 1型六角开槽螺母M14×1.5    | SLOTTED NUTS M14×1.5          | 2        |        |      |
| 24                              | 345000000080    | 前轮防尘胶套             | COVER. FR. HUB                | 2        |        |      |
| 25                              | GB/T91-2000     | 开口销2.5×25          | PIN. COTTER 2.5×25            | 2        |        |      |
| 26                              | 345000000100    | 前轮安装衬套 φ17×φ27×8   | SPACER FR. HUB                | 2        |        |      |
| 27                              | GB/T97.1-2002   | 平垫圈10              | WASHER FLAT 10                | 8        | ★      |      |
| 28                              | GB/T13871-1992  | 油封FB27x42x7        | DUST SEAL 27×42×7             | 2        | ★      |      |
| 29                              | GB/T276-1994    | 轴承6203             | BEARING 6203                  | 2        | ★      |      |
| 30                              | 345030000000    | 前轮毂                | HUB. FR. WHEEL                | 2        |        |      |
| 31                              | 345000000520    | 辐板前轮螺栓M10×1.25×35  | BOLT TIRE M10×1.25×35         | 8        |        |      |
| 32                              | GB/T276-1994    | 轴承6204             | BEARING 6204                  | 2        |        |      |
| 33                              | GB/T13871-1992  | 油封FB25x42x7        | DUST SEAL 25×47×7             | 2        |        |      |
| 34                              | 345030000010    | 前制动盘（φ130）         | DISC FR. BRAKE                | 2        |        |      |
| 35                              | 345031020000    | 前轮下摇臂              | LOWER SUSPENSION ARM ASSY.    | 2        |        |      |
| 36                              | GB/T6187.1-2000 | 全金属六角法兰面锁紧螺母M10    | NUT M10×1.25                  | 4        |        |      |
| 37                              | 345000000450    | 下摇臂端盖              | DUST CAP LOWER SUSPENSION ARM | 4        |        |      |
| 38                              | 345000000140    | 下摇臂尼龙衬套            | BUSH LOWER SUSPENION ARM      | 8        | ★      |      |
| 39                              | 345000000150    | 下摇臂衬管 φ10.5×φ15×56 | COLLAR LOWER SUSPENSION ARM   | 4        |        |      |
| 40                              | 345000000450    | 下摇臂端盖              | DUST CAP LOWER SUSPENSION ARM | 4        |        |      |
| 41                              | GB/T5789-1986   | 六角法兰面螺栓M10×1.25×80 | BOLT M10×1.25×80              | 4        |        |      |

# F-4

## 后摇臂系统

### REAR SWING ARM.



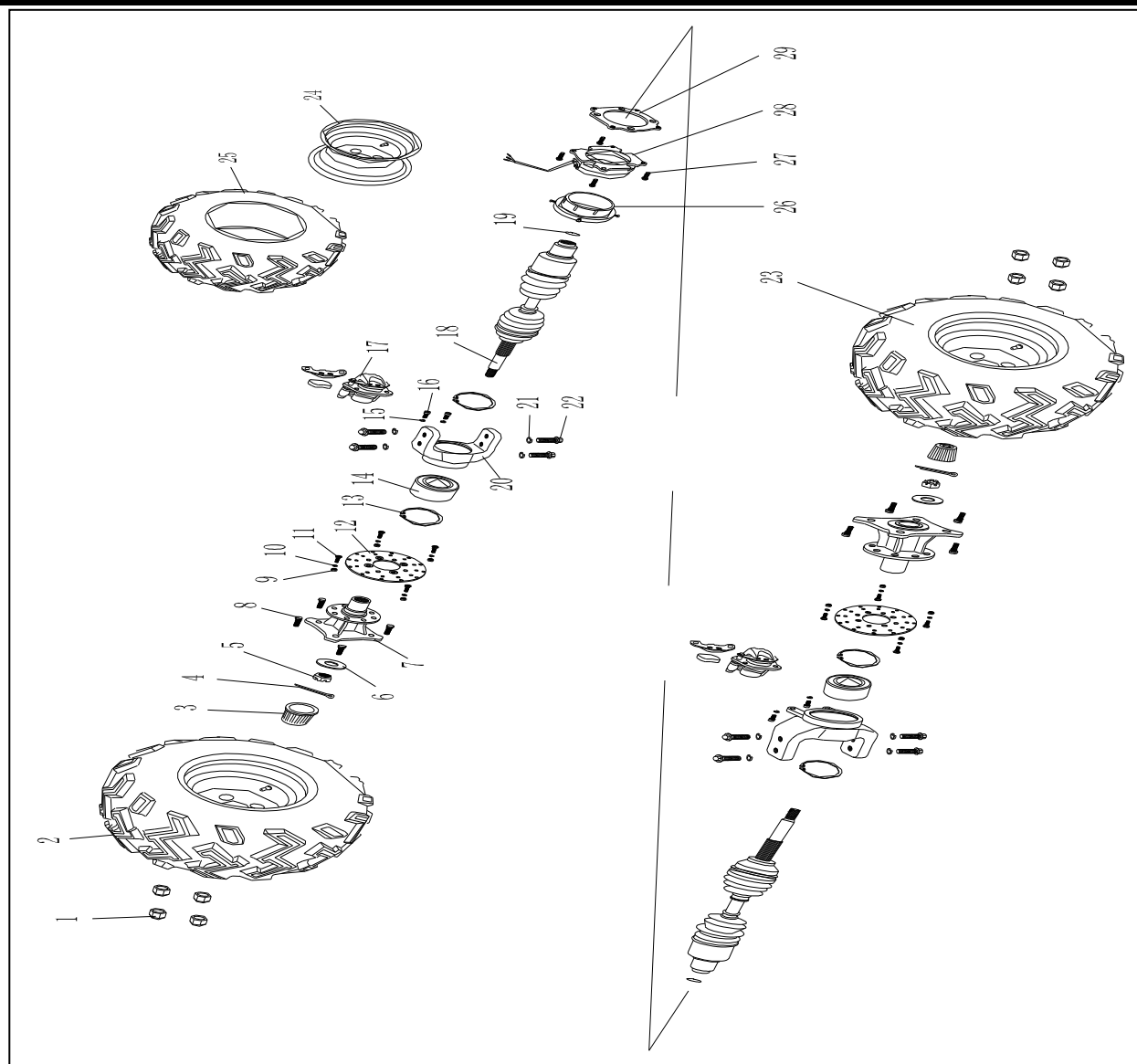
| F-4 后摇臂系统---REAR SWING ARM. |                 |                    |                                      |          |        |      |
|-----------------------------|-----------------|--------------------|--------------------------------------|----------|--------|------|
| 序号                          | 代号(PART NO.)    | 名称                 | DESCRIPTION                          | 数量       | 备注     | 单价\$ |
| REF NO.                     |                 |                    |                                      | REGD NO. | REMARK |      |
| 1                           | 345212030000R   | 右驻车制动器             | RIGHT STOP CAR BRAKE CALIPER         | 1        |        |      |
| 2                           | GB/T6187.1-2000 | 全金属六角法兰面锁紧螺母M10    | NUT M10×1.25                         | 2        |        |      |
| 3                           | 345203020000    | 后减震器总成 L=360       | CUSHION ASSY. RR                     | 2        | ★★     |      |
| 4                           | GB/T5789-1986   | 六角法兰面螺栓M10x1.25x55 | BOLT M10X1.25X55                     | 2        |        |      |
| 5                           | 345211022000    | 右后摇臂               | RIGHT REAR SWING SHELF               | 1        |        |      |
| 6                           | GB/T6170-2000   | 1型六角螺母M8           | HEXAGON NUT M8                       | 8        |        |      |
| 7                           | GB/T70.1-2000   | 内六角圆柱头螺钉M8X25      | HEXAGON SOCKET HEAD CAP SCREWS M8X25 | 8        |        |      |
| 8                           | GB/T5789-1986   | 六角法兰面螺栓M10x1.25x55 | BOLT M10X1.25X55                     | 2        |        |      |
| 9                           | 345211021000    | 左后摇臂               | LEFT REAR SWING SHELF                | 1        |        |      |
| 10                          | 345212030000L   | 左驻车制动器             | LEFT STOP CAR BRAKE CALIPER          | 1        |        |      |
| 11                          | GB/T70.1-2000   | 内六角圆柱头螺钉M8X16      | HEXAGON SOCKET HEAD CAP SCREWS M8X16 | 2        |        |      |
| 12                          | 345211022020    | 注油嘴M6              | JOIN OIL MOUTH M6                    | 2        |        |      |
| 13                          | 345211022010    | 注油嘴M6垫圈            | JOIN OIL MOUTH WASHER                | 2        |        |      |
| 14                          | 345211021050    | 后摇臂轴               | REAR SWING ARM AXLE                  | 2        |        |      |
| 15                          | 345211021070    | 衬套                 | BUSH                                 | 4        |        |      |
| 16                          | GB/T9877.1-1988 | 油封FB25×40×7        | OIL SEAL25X40X7                      | 4        |        |      |
| 17                          | GB/T297-1994    | 轴承30203            | BEARING 30203                        | 4        |        |      |
| 18                          | GB/T9457-1988   | 1型六角开槽螺母M16×1.5    | SLOTTED NUTS M16X1.5                 | 2        |        |      |
| 19                          | GB/T91-2000     | 开口销2.5×40          | SPLIT PINS 2.5X40                    | 2        |        |      |
| 20                          | GB/T6187.1-2000 | 全金属六角法兰面锁紧螺母M10    | NUT M10X1.25                         | 2        |        |      |

| F-4 后摇臂系统---REAR SWING ARM. |                 |                    |                            |          |        |      |
|-----------------------------|-----------------|--------------------|----------------------------|----------|--------|------|
| 序号                          | 代号(PART NO.)    | 名称                 | DESCRIPTION                | 数量       | 备注     | 单价\$ |
| REF NO.                     |                 |                    |                            | REGD NO. | REMARK |      |
| 21                          | 346030000060    | 稳定杆固定套             | STEADY POLE BUSH           | 2        |        |      |
| 22                          | GB/T5789-1986   | 六角法兰面螺栓 M10×1.25×5 | BOLT M10X1.25X50           | 2        |        |      |
| 23                          | 346030000070    | 固定夹                |                            | 2        |        |      |
| 24                          | GB/T5789-1986   | 六角法兰面螺栓M6×20       | BOLT M6X20                 | 4        |        |      |
| 25                          | 346030000040    | 稳定杆下胶套             | STEADY POLE DOWN BUSH      | 2        | ★★     |      |
| 26                          | 345211021200    | 稳定杆                | STEADY POLE                | 1        |        |      |
| 27                          | 346030000030    | 稳定杆上胶套             | STEADY POLE PRESSING PLATE | 2        | ★★     |      |
| 28                          | 346030000020    | 稳定杆压板              | STEADY POLE PRESSING PLATE | 2        |        |      |
| 29                          | GB/T5789-1986   | 六角法兰面螺栓M8×20       | BOLT M8X20                 | 4        |        |      |
| 30                          | GB/T6187.1-2000 | 全金属六角法兰面锁紧螺母 M6    | NUT M6                     | 6        |        |      |
| 31                          | GB/T5789-1986   | 六角法兰面螺栓 M6×16      | BOLT M6X16                 | 6        |        |      |
| 32                          | 345000000120    | 后挡泥板               | REAR FENDER                | 2        | ★      |      |
| 33                          | 345230040000    | 后右挡泥板支架            | REAR FENDER SUPPORT ®      | 1        | ★      |      |
| 34                          | GB/T5789-1986   | 六角法兰面螺栓 M8×16      | BOLT M8X16                 | 4        |        |      |
| 35                          | 345230030000    | 后左挡泥板支架            | REAR FENDER SUPPORT (L)    | 1        |        |      |
|                             |                 |                    |                            |          |        |      |
|                             |                 |                    |                            |          |        |      |
|                             |                 |                    |                            |          |        |      |
|                             |                 |                    |                            |          |        |      |
|                             |                 |                    |                            |          |        |      |

# F-5

## 后轴传动系统

### REAR SHAFT TRANSMISSION.



| F-5 后轴传动系统---REAR SHAFT TRANSMISSION. |                |                   |   |          |        |      |
|---------------------------------------|----------------|-------------------|---|----------|--------|------|
| 序号                                    | 代号(PART NO.)   | 名称                | DESCRIPTION                             | 数量       | 备注     | 单价\$ |
| REF NO.                               |                |                   |   | REGD NO. | REMARK |      |
| 1                                     | 345000000760   | 轮子固定螺母 M10×1.25   | NUT M10X1.25                            | 8        |        |      |
| 2                                     | 345005020000   | 右后轮总成             | RIGHT REAR TIRE                         | 1        | ★      |      |
| 3                                     | 345000000080   | 后轮防尘胶套            | COVER TR HUB                            | 2        |        |      |
| 4                                     | GB/T91-2000    | 开口销3.2×50         | SPLIT PINS 3.2X50                       | 1        |        |      |
| 5                                     | 345215000020   | 六角开槽薄螺母M18×1.5    | HEXAGON SLOTTED AND CASTLE NUTS M18X1.5 | 2        |        |      |
| 6                                     | 345000000560   | 垫圈52×18.5×3       | WASHER 52X18.5X3                        | 2        |        |      |
| 7                                     | 345205020010   | 后轮毂               | REAR RIM                                | 2        |        |      |
| 8                                     | 345200000530   | 辐板前轮螺栓M10×1.25×35 | REAR TIRE BOLT M10X1.25X35              | 8        |        |      |
| 9                                     | GB/T6170-2000  | 1型六角螺母M8          | HEXAGON NUTS M8                         | 8        |        |      |
| 10                                    | GB/T93-1987    | 标准型弹簧垫圈 8         | SPRING WASHER 8                         | 8        |        |      |
| 11                                    | 345212000020   | 制动盘螺钉 M8          | DISC RR BRAKE SCREWS M8                 | 8        |        |      |
| 12                                    | 345212000010   | 后制动盘 (Φ170)       | DISC RR BRAKE SCREWS M8                 | 2        |        |      |
| 13                                    | GB/T893.2-1986 | 孔用弹性挡圈 72         | CIRCLIPS FOR HOLE 72                    | 4        |        |      |
| 14                                    | DAC37720037    | 轴承 (轮毂)           | BEARING                                 | 2        |        |      |
| 15                                    | GB/T93-1987    | 标准型弹簧垫圈 8         | SPRING WASHER 8                         | 4        |        |      |
| 16                                    | GB/T70.1-2000  | 内六角圆柱头螺钉 M8×16    | HEXAGON SOCKET HEAD CAP SCREWS M8X16    | 4        |        |      |
| 17                                    | 346212030000   | 后刹分泵总成(左、右)       | REAR BRAKE CALIPER(R、L)                 | 2        |        |      |
| 18                                    | 345215000000   | 等速万向节             | UNIFORM VELOCITY OMNIPOTENT             | 2        | ★      |      |
| 19                                    | 345215000010   | 转动轴卡簧             | SHAFT CIRCLIPS FOR HOLE                 | 2        |        |      |
| 20                                    | 345205021000   | 羊角组件              | SHEEP ANGLE                             | 2        |        |      |

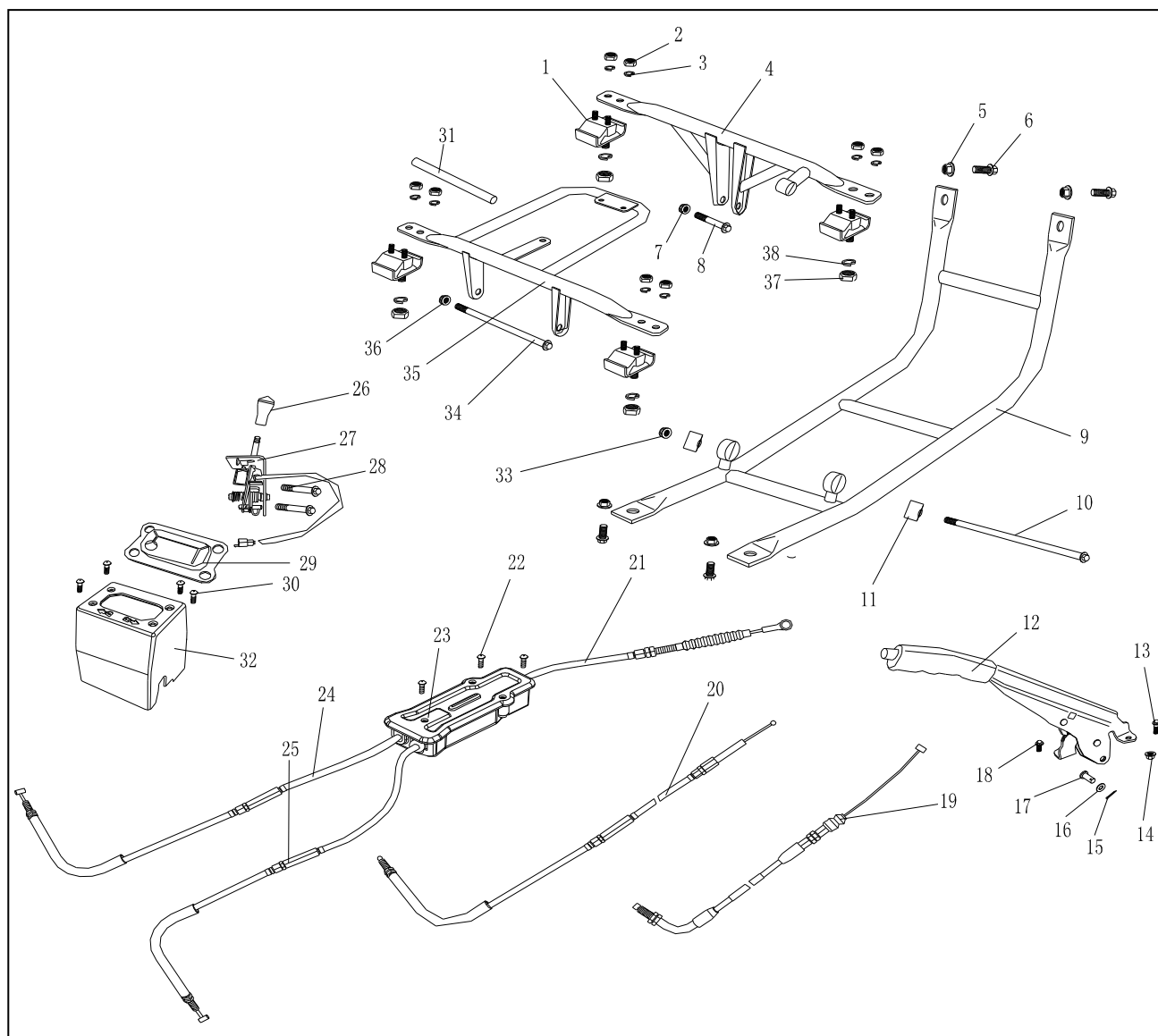
## F-5 后轴传动系统---REAR SHAFT TRANSMISSION.

[illegible]

## F-6

后悬挂系统发动机保护杠

REAR HANG/ENGINE  
PROTECTION STICK.





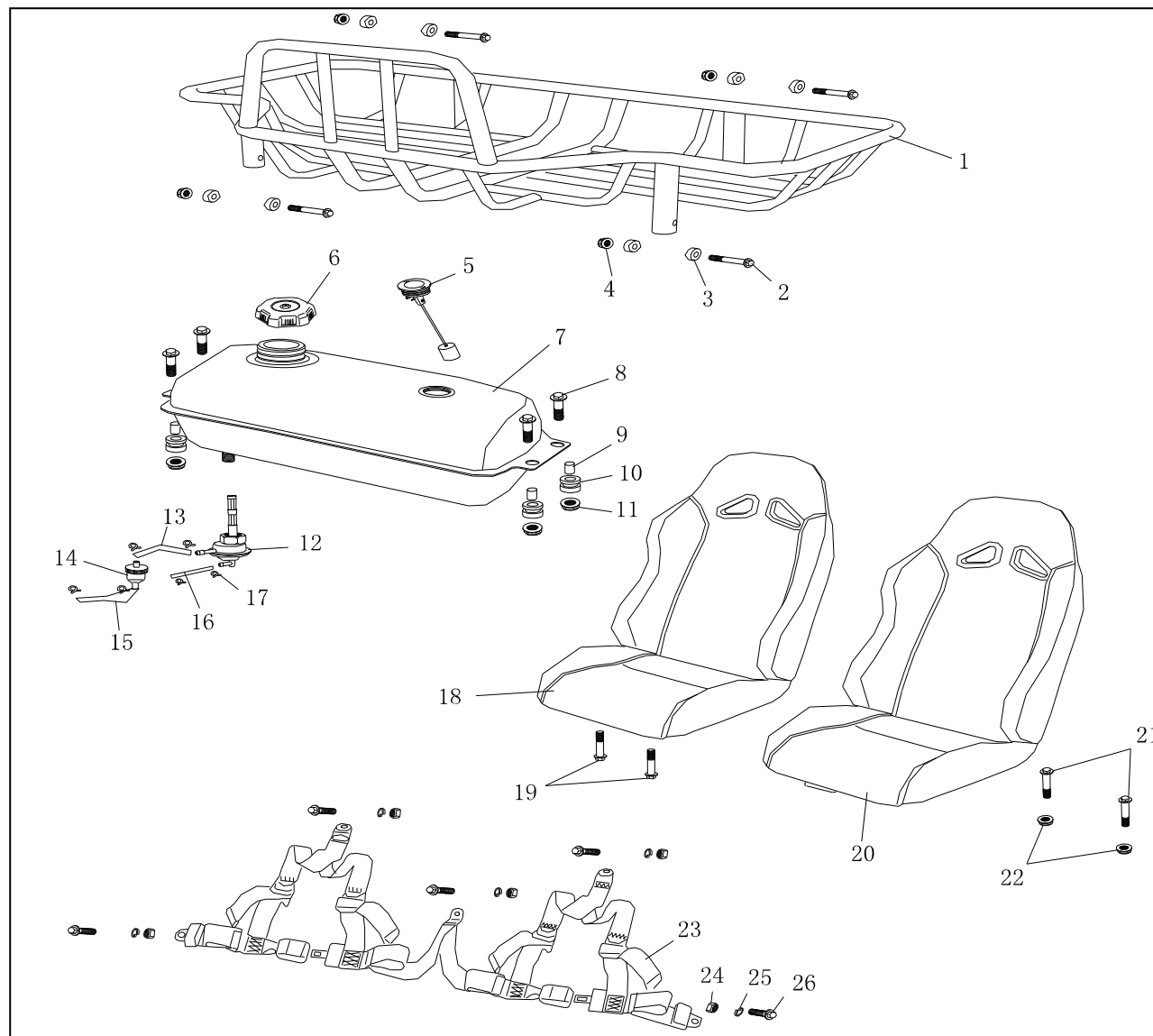
| F-6 后悬挂系统发动机保护杠---REAR HANG/ENGINE PROTECTION STICK. |                 |                       |                               |          |        |      |
|--|-----------------|-----------------------|-------------------------------|----------|--------|------|
| 序号   | 代号(PART NO.)    | 名称                    | DESCRIPTION                   | 数量       | 备注     | 单价\$ |
| REF NO.  |                 |                       |                               | REGD NO. | REMARK |      |
| 1  | 346011083000    | 发动机缓冲垫                | ENGINE CUSHION BUSH           | 4        |        |      |
| 2  | GB/T6170-2000   | 1型六角螺母M8              | HEXAGON NUTS M8               | 8        |        |      |
| 3  | GB/T93-1987     | 标准型弹簧垫圈8              | SPRING WASHER 8               | 8        |        |      |
| 4  | 345211082000    | 发动机后悬挂                | ENGINE REAR HANG              | 1        |        |      |
| 5  | GB/T6187.1-2000 | 全金属六角法兰面锁紧螺母M10       | NUT M10×1.25                  | 4        |        |      |
| 6  | GB/T5789-1986   | 六角法兰面螺栓M10×1.25×20    | BOLT M10×1.25×20              | 4        |        |      |
| 7  | GB/T6187.1-2000 | 全金属六角法兰面锁紧螺母M10       | NUT M10×1.25                  | 1        |        |      |
| 8  | GB/T5789-1986   | 六角法兰面螺栓M10×1.25×55    | BOLT M10×1.25×55              | 1        |        |      |
| 9  | 345211083000    | 发动机保护杠                | ENGINE PROTECTION STICK       | 1        |        |      |
| 10   | 345200000770    | 发动机下安装轴(M10X1.25X215) | ENGINE DOWN INSTALLATION AXLE | 1        |        |      |
| 11   | 345211020050    | 缓冲套25×10              | CUSHION BUSH 25×10            | 2        |        |      |
| 12   | 346126010000    | 驻车手柄                  | HANDLE BAR, BRAKE             | 1        |        |      |
| 13   | GB/T5789-1986   | 六角法兰面螺栓M8X20          | BOLT M8×20                    | 1        |        |      |
| 14   | GB/T6187.1-2000 | 全金属六角法兰面锁紧螺母M8        | NUT M8                        | 1        |        |      |
| 15   | GB/T91-2000     | 开口销1.6×20             | SPLIT PINS 1.6×20             | 1        |        |      |
| 16   | GB/T5287-1985   | 平垫圈8                  | WASHER 8                      | 1        |        |      |
| 17   | GB/T882-1986    | 销轴8×20                | CLEVIS PINS WITH HEAD 8×20    | 1        |        |      |
| 18   | GB/T5789-1986   | 六角法兰面螺栓M8X14          | BOLT M8×14                    | 1        |        |      |
| 19   | 345000000490    | 油门拉线                  | CABLE COMP THROTTLE           | 1        |        |      |
| 20   | 345213020000    | 倒档拉索                  | CABLE COMP REVERSE            | 1        |        |      |

| F-6 后悬挂系统发动机保护杠---REAR HANG/ENGINE PROTECTION STICK. |                 |                       |                              |          |        |       |
|--|-----------------|-----------------------|------------------------------|----------|--------|-------|
| 序号   | 代号(PART NO.)    | 名称                    | DESCRIPTION                  | 数量       | 备注     | 单价\$  |
| REF NO.  |                 |                       |                              | REGD NO. | REMARK | PRICE |
| 21   | 345213010100    | 驻车拉线前段(前)             | CABLE COMP HANDLE BAR (H)    | 1        |        |       |
| 22   | GB/T823-1988    | 十字槽小盘头螺钉M5×14         | CROSS RECESSED SCREW M5×14   | 3        |        |       |
| 23   | 345013012000    | 分线盒组件                 | CABLE BOX                    | 1        |        |       |
| 24   | 345213010300    | 驻车拉线后段(右)             | CABLE COMP HANDLE BAR (R)    | 1        |        |       |
| 25   | 345213010200    | 驻车拉线后段(左)             | CABLE COMP HANDLE BAR (L)    | 1        |        |       |
| 26   | 990800000050    | 手柄球(M12)              | HANDLE BAR HEAD (M12)        | 1        |        |       |
| 27   | 990800000000    | 换档器总成                 | REVERSE GEAR                 | 1        |        |       |
| 28   | GB/T5789-1986   | 六角法兰面螺栓M8x20          | BOLT M8×20                   | 2        |        |       |
| 29   | 990804000020    | 防护板                   | PROTECTION PLATE             | 1        |        |       |
| 30   | GB/T818-2000    | 十字槽盘头螺钉M5x12          | CROSS RECESSED SCREW M5×12   | 4        |        |       |
| 31   | 354011022100    | 吊架衬管                  | HANGER LINING COVER          | 1        |        |       |
| 32   | 990804000010    | 罩壳                    | ANTI-DUST COVER              | 1        |        |       |
| 33   | GB/T6187.1-2000 | 全金属六角法兰面锁紧螺母M10       | NUT M10×1.25                 | 1        |        |       |
| 34   | 345200000790    | 发动机上安装轴(M10X1.25X192) | ENGINE TOP INSTALLATION AXLE | 1        |        |       |
| 35   | 345211081000    | 发动机前悬挂                | ENGINE ANTERIOR HANG         | 1        |        |       |
| 36   | GB/T6187.1-2000 | 全金属六角法兰面锁紧螺母M10       | NUT M10×1.25                 | 1        |        |       |
| 37   | GB/T6170-2000   | 1型六角螺母M10×1.25        | HEXAGON NUTS M10×1.25        | 4        |        |       |
| 38   | GB/T93-1987     | 标准型弹簧垫圈10             | SPING WASHER 10              | 4        |        |       |
|  |                 |                       |                              |          |        |       |
|  |                 |                       |                              |          |        |       |

# F-7

后货架.安全带

REAR CARGO  
RACK/SEAT/BELT



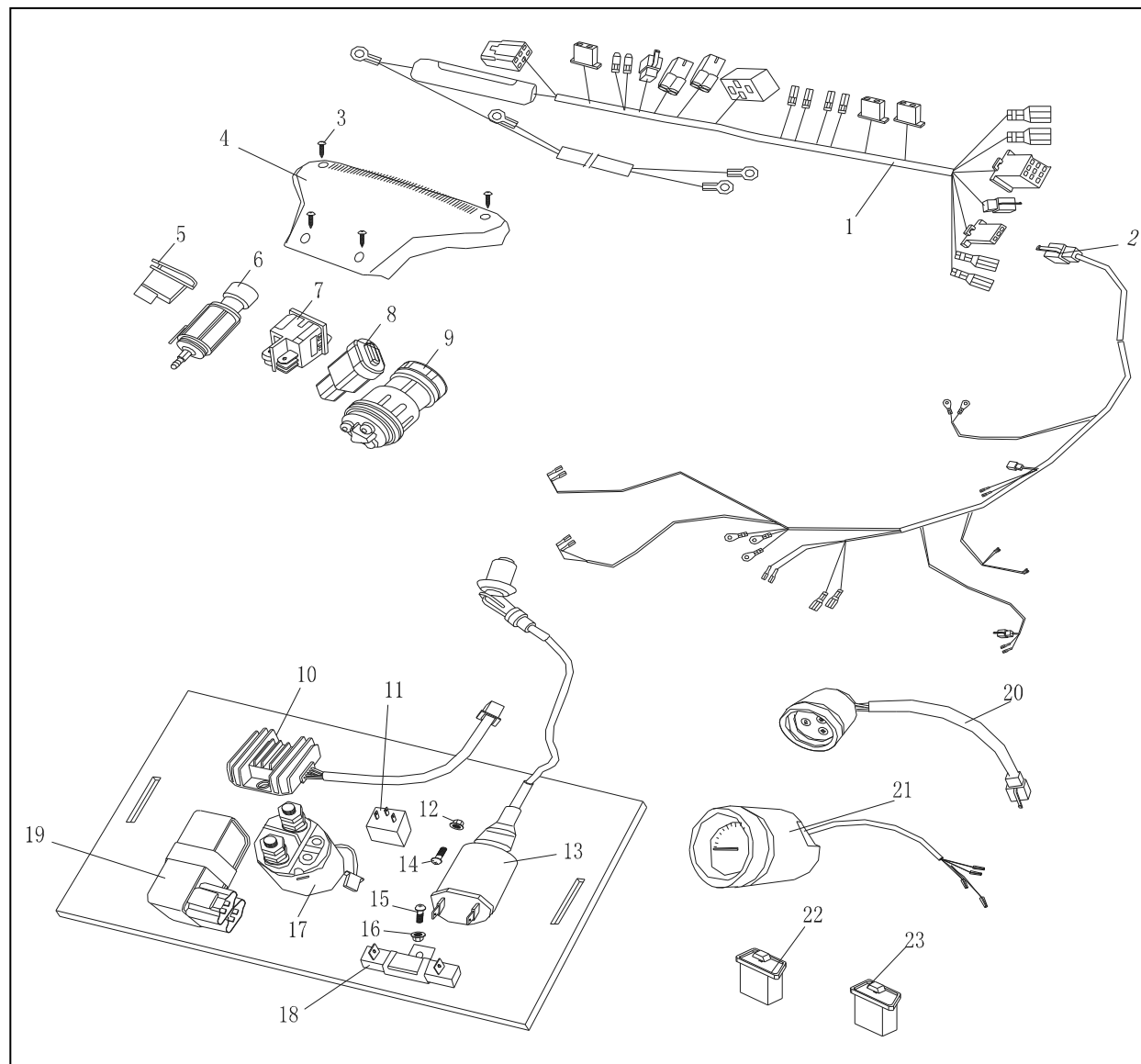
| F-7 后货架.安全带---REAR CARGO RACK/SEAT/BELT |                 |                   |                            |          |        |       |
|---|-----------------|-------------------|----------------------------|----------|--------|-------|
| 序号                                      | 代号(PART NO.)    | 名称                | DESCRIPTION                | 数量       | 备注     | 单价\$  |
| REF NO.                                 |                 |                   |                            | REGD NO. | REMARK | PRICE |
| 1                                       | 34521000000     | 后货架               | REAR CARGO RACK            | 1        |        |       |
| 2                                       | GB/T5789-1986   | 六角法兰面螺栓M8x1.25x50 | BOLT M8×1.25×50            | 4        |        |       |
| 3                                       | 345000000320    | 衬套(R垫)            | BUSH (R CUSHION)           | 8        |        |       |
| 4                                       | GB/T5789-1986   | 六角法兰面螺母M8         | NUT M8                     | 4        |        |       |
| 5                                       | 345208040000    | 油量器               | OIL LEVER MACHINE          | 1        |        |       |
| 6                                       | 345008020000    | 油箱盖               | CAP COMP FUEL FILLER       | 1        |        |       |
| 7                                       | 345008010000    | 油箱                | TANK COMP FUEL             | 1        |        |       |
| 8                                       | GB/T5789-1986   | 六角法兰面螺栓M8x30      | BOLT M8×30                 | 4        |        |       |
| 9                                       | 345000000060    | 油箱安装衬套 φ8x φ10x12 | COLLAR TANK COMP φ8×φ10×12 | 4        |        |       |
| 10                                      | 345000000050    | 油箱减震胶垫            | RUBBER MOUNT               | 4        | ★★     |       |
| 11                                      | GB/T6187.1-2000 | 全金属六角法兰面锁紧螺母M8    | NUT M8                     | 4        |        |       |
| 12                                      | 345008030000    | 油开关               | COCK ASSY. FUEL AUTO       | 1        |        |       |
| 13                                      | 345000000030    | 负压管 I             | TUBE COMP FUEL 1           | 1        |        |       |
| 14                                      | 345008040000    | 汽油过滤器             | FILTER                     | 1        | ★      |       |
| 15                                      | 345000000040    | 负压管 II            | TUBE COMP FUEL 2           | 1        |        |       |
| 16                                      | 345000000010    | 进油管 I             | TUBE COMP VACUUM           | 1        |        |       |
| 17                                      | 345000000070    | 油管卡簧 φ8           | CLIP FUEL TUBE             | 6        |        |       |
| 18                                      | 345207020000    | 副座垫               | SEAT COMP R                | 1        |        |       |
| 19                                      | GB/T5789-1986   | 六角法兰面螺栓M8x40      | BOLT M8×40                 | 2        |        |       |
| 20                                      | 345207010000    | 主座垫               | SEAT COMP L                | 1        |        |       |



F-8

电路系统

WIRE HARNESS/ELECTRICAL



| F-8 电路系统---WIRE HARNESS/ELECTRICAL |                 |                   |                         |          |        |      |
|------------------------------------|-----------------|-------------------|-------------------------|----------|--------|------|
| 序号                                 | 代号(PART NO.)    | 名称                | DESCRIPTION             | 数量       | 备注     | 单价\$ |
| REF NO.                            |                 |                   |                         | REGD NO. | REMARK |      |
| 1                                  | 345209020000    | 电缆1               | HARNESS WIRE1           | 1        |        |      |
| 2                                  | 345209030000    | 电缆2               | HARNESS WIRE2           | 1        |        |      |
| 3                                  | GB/T845-1985    | 十字槽盘头自攻螺钉ST4.2×12 | AUTO PAN ST4.2×12       | 4        |        |      |
| 4                                  | 345009010010    | 面板壳               | COVER SWITCH            | 1        |        |      |
| 5                                  | 345009014000    | 喇叭按钮              | HORN BUTTON             | 1        |        |      |
| 6                                  | 345009019000    | 应急电源插座            | CIGAR LIGHTER           | 1        |        |      |
| 7                                  | 345009013000    | 远近光开关             | HEADLIGHT SWITCH        | 1        |        |      |
| 8                                  | 345009015000B   | 危急开关              | ENGINE STOP BUTTON      | 1        |        |      |
| 9                                  | 345009016000    | 电源开关              | IGNITION START SWITCH   | 1        |        |      |
| 10                                 | 345009143000    | 整流调节器             | RECTIFIER COMP REGULATE | 1        |        |      |
| 11                                 | 345009018000    | 三线闪光器             | CONTROL RELAY           | 1        |        |      |
| 12                                 | GB/T6187.1-2000 | 全金属六角法兰面锁紧螺母M6    | NUT M6                  | 1        |        |      |
| 13                                 | 345009142000    | 点火线圈              | COIL COMP IGNITION      | 1        |        |      |
| 14                                 | GB/T823-1988    | 十字槽小盘头螺钉M6×25     | PAN M6×25               | 1        |        |      |
| 15                                 | GB/T823-1988    | 十字槽小盘头螺钉M4×10     | PAN M4×10               | 1        |        |      |
| 16                                 | GB/T6187.1-2000 | 全金属六角法兰面锁紧螺母M4    | NUT M4                  | 1        |        |      |
| 17                                 | 345009146000    | 电器盒底板组件           | STARTING RELAY          | 1        |        |      |
| 18                                 | 345009144000    | 泄流电阻              | RESISTOR COMP 10W 10Ω   | 1        |        |      |
| 19                                 | 345009141000    | 点火器               | UNIT COMP C.D.I.        | 1        |        |      |
| 20                                 | 345230030000    | 转向灯指示表            | INDICATOR               | 1        |        |      |

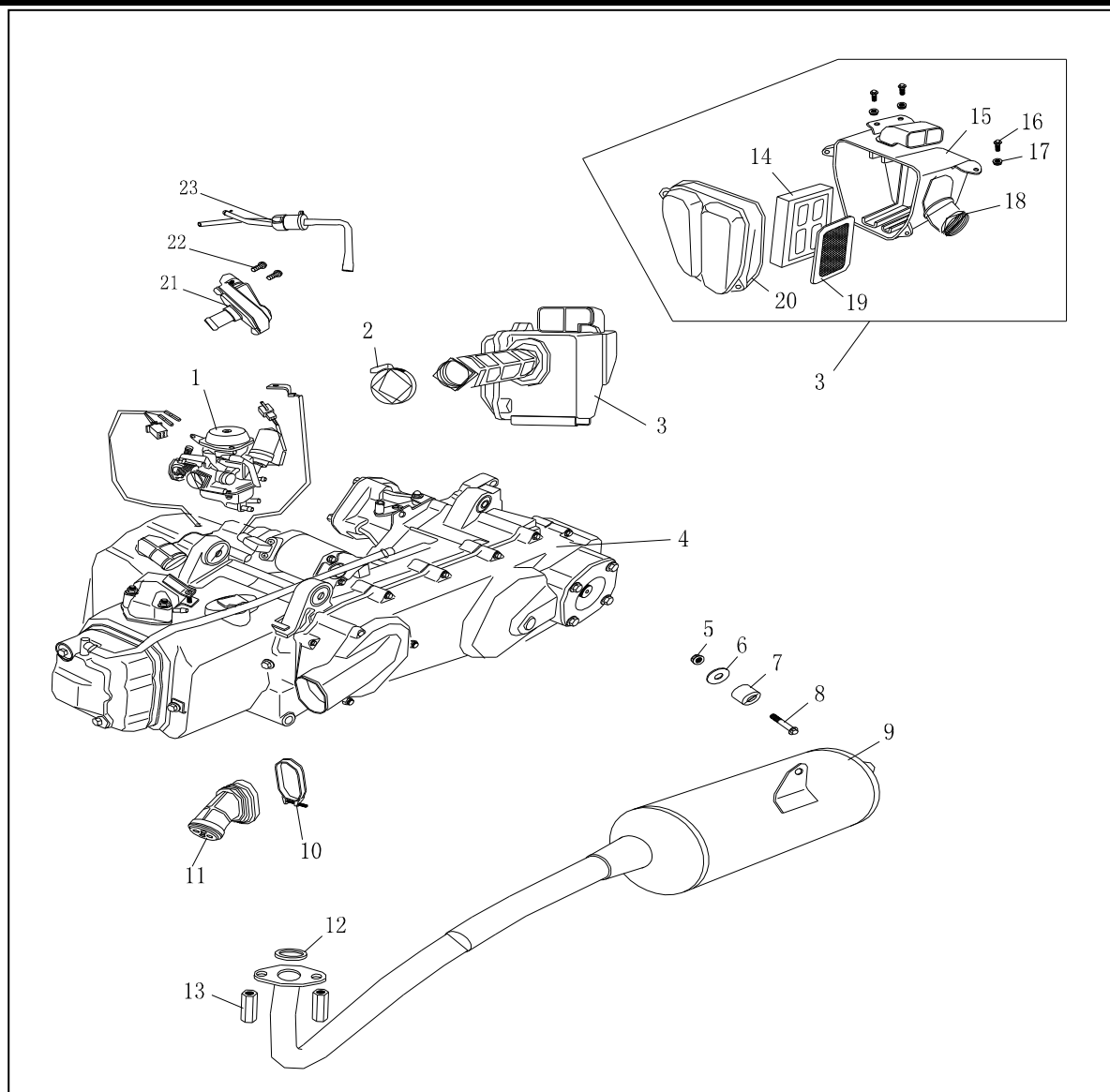




## F-9

发动机.消音器.空滤器.  
化油器

ENGINE/MUFFLER/AIR  
CLEANER/CARBURETOR



| F-9 发动机.消音器.空滤器.化油器---ENGINE/MUFFLER/AIR CLEANER/CARBURETOR |                 |  |  |          |        |      |
|---|-----------------|--|--|----------|--------|------|
| 序号  | 代号(PART NO.)    | 名称                                     | DESCRIPTION                                    | 数量       | 备注     | 单价\$ |
| REF NO.   |                 |  |  | REGD NO. | REMARK |      |
| 1   | 345216000000    | 化油器                                    | CARBURETOR                                     | 1        | ★      |      |
| 2   | 345218000010    | 空滤器卡箍                                  | BAND AIRCLEANERCONNECTING TUBE                 | 1        |        |      |
| 3   | 345218000000    | 空滤器                                    | AIR CLEANER ASSY                               | 1        | ★      |      |
| 4   | 345201000000    | 发动机                                    | ENGINE   | 1        |        |      |
| 5   | GB/T6187.1-2000 | 全金属六角法兰面锁紧螺母M8                         | NUT M8   | 1        |        |      |
| 6   | GB/T96.1-2002   | 大垫圈 $\phi 8.5 \times \phi 24 \times 2$ | WASHER FLAT $\phi 8.5 \times \phi 24 \times 2$ | 1        |        |      |
| 7   | 345217020000    | 消声器固定缓冲垫                               | MUFFLER SHOCK ATTENUATION BUSH                 | 1        |        |      |
| 8   | GB/T5787-1986   | 六角法兰面螺栓M8×35                           | BOLT M8×35                                     | 1        |        |      |
| 9   | 345217000000    | 消声器                                    | MUFFLER  | 1        |        |      |
| 10  | 345000000810    | 冷风管卡箍                                  | CLAMP BOOT                                     | 1        |        |      |
| 11  | 345201000020    | 冷风管                                    | BOOT SIDE CASE                                 | 1        |        |      |
| 12  | 345000000630    | 消声垫                                    | MUFFLER WASHER                                 | 1        | ★      |      |
| 13  | 345000000790    | 消声器螺母M8×35                             | MUFFLER NUTS M8×35                             | 2        |        |      |
| 14  | 345218000020    | 二次空滤器滤芯                                | ELEMENT AIR CLEANER SECOND                     | 1        | ★★★    |      |
| 15  | 345218000030    | 空滤器壳体                                  | CASE COMP AIR CLEANER                          | 1        |        |      |
| 16  | GB/T5787-1986   | 六角法兰面螺栓M6×20                           | BOLT M6×20                                     | 3        |        |      |
| 17  | GB/T6187.1-2000 | 全金属六角法兰面锁紧螺母M6                         | NUT M6   | 3        |        |      |
| 18  | 345218000040    | 空滤器接头                                  | AIR CLEANER CONNECTING TUBE                    | 1        |        |      |
| 19  | 345218000050    | 空滤器滤芯                                  | ELEMENT AIR CLEANER                            | 1        |        |      |
| 20  | 345218000060    | 空滤器盖                                   | COVER AIR CLEANER                              | 1        |        |      |

