

Owner's Manual

Parts Manual

READ THIS MANUAL CAREFULLY
IT CONTAINS IMPORTANT SAFETY INFORMATION.

SZ250DS

MINIMUM
RECOMMENDED
OPERATOR AGE:

16



FOR OFF-ROAD USE ONLY

This vehicle is designed and manufactured for off-road use only.

USA only:

It does not conform to federal motor vehicle safety standards, and operation on public streets, roads, or highways is illegal

SZ250DS Limited Warranty

The warranty policy applies to those cases where the new seller vehicle is unloaded from its shipping container, set up and delivered by authorized dealer, and under normal use and service is found to have defects in parts or workmanship under the following terms and conditions. This warranty covers the engine and engine related components for a period of 90 days.

This warranty does not apply to any part, which in opinion of seller was defective because of improper maintenance, improper assembly, alterations, abuse, negligence or accident.

Should warranty service be required on your SZ250DS during the 90 days warranty period, please contact your nearest authorized dealer for repairs.

What is not covered under this warranty?

This warranty does not cover any seller vehicle that has been subjected to:

- a.** This warranty does not cover any seller vehicle in any way so to adversely affect its safety or reliability.
- b.** Renting
- c.** Disassembly, adjusting, or repairing of the vehicle in any way so as to adversely affect its safety or reliability.
- d.** Competition or racing

The warranty does not cover loss of use of the seller vehicle, loss of time, inconvenience, or other consequential damage which includes, but is not limited to, loss or damage to persons or property or any expense of returning any damaged units to the seller distributor or its authorized dealer.

Seller has the right to make changes without notice.

CONTENTS

OWNER'S MANUAL

1. FOREWORD.....	4
2. A FEW WORDS ABOUT SAFETY.....	5
3. IMPORTANT SAFETY INFORMATION.....	6
4. SAFETY LABELS.....	8
5. ARE YOU READY TO DRIVE.....	9
6. IS YOUR VEHICLE READY TO DRIVE/IS YOUR VEHICLE READY TO DRIVE.....	11
7. SAFE DRIVING PRECAUTIONS.....	13
8. SPECIFICATIONS.....	15
9. OPERATION.....	16
10. SERVICE INSTRUCTIONS.....	20
11. REPAIR.....	24
12. PERIODICAL CHECK AND SERVICES.....	25
13. WIRING DIAGRAM.....	26

PARTS MANUAL.....	27
-------------------	----

FOREWORD

Thank you for choosing our Go-art. We hope you will have fun with it. Before you start operate the Go-Kart, please read through this Owner's Manual carefully as it contains important safety and maintenance information. Failure to follow the warnings contained in this manual can result in serious injuries.

Be sure to follow the recommended maintenance schedule and service your kart accordingly. Preventive maintenance is extremely important to the longevity of your Go-Kart.

We hope you will have a pleasant experience with our products and thanks again for choosing US.

A FEW WORDS ABOUT SAFETY


In order to keep everyone safe, you must take responsibility for the safe operation of your Go-Kart.

To help you make informed decisions about safety, we have provided operating procedures and other information on labels and in this manual. This information alerts you to potential hazards that could hurt you or others.

It is not practical or possible to warn you about all hazards associated with operating or maintaining a Go-Kart. You must use your own good judgment.

You will find important safety information in a variety of forms, including:

Safety Labels - On the Go-Kart.

Safety Messages – Preceded by a safety alert symbol  and one of two signal words: WARNING, or CAUTION.

These signal words mean:



Physical harm may result from failure to adhere to the instructions that are described within the WARNING labels.

Safety Headings --- such as Important Safety Reminders or Important Safety Precautions.

Safety Section --- such as Go- Kart Safety.

Instructions --- how to use this Go –Kart correctly and safely.

This entire manual is filled with important safety information----please read it carefully.

IMPORTANT SAFETY INFORMATION

Your Go-Kart will provide you with many years of service and pleasure. Providing you take responsibility for your own safety and understand the challenges you can meet while driving.

There is much that you can do to protect yourself when you drive. You'll find many helpful recommendations throughout this manual. The following are a few that we consider most important.

Follow the Age Recommendation

It is strongly recommended that no one under the age of 16 be permitted to drive this Go-Kart without adult supervision.

Always Wear a Helmet

It's a proven fact: helmets significantly reduce the number and severity of head injuries. Always wear an approved motorcycle helmet. We also recommend that you wear eye protection, sturdy boots, gloves, and other protective gear.

Drive Off-Road Only

Your Go-Kart is designed and manufactured for off-road use only. The tires are not made for pavement, and the Go-Kart does not have turn signals and other features required for use on public roads. If you need to cross a paved or public road, get off and walk your Go-Kart across.

Take Time to Learn & Practice

Even if you have derived other Go-Kart, take time to become familiar with how this Go-Kart works and handles. Practice in a safe area until you build your skills and get accustomed to this Go-Kart's size and weight.

Because many accidents involve inexperienced or untrained drivers, we urge all drivers to take a training course approved by the Go-Kart Safety Institute. Check with your dealer for more information on training courses.

Be Alert for Off-Road Hazards

The terrain can present a variety of challenges when you drive off-road. Continually "read" the terrain for unexpected turns, drop-offs, rocks, ruts, and other hazards. Always keep your speed low enough to allow time to see and react to hazards.

Drive within Your Limits

Pushing limits is another major cause of Go-Kart accidents. Never drive beyond your personal abilities or faster than conditions warrant. Remember that alcohol, drugs, fatigue, and inattention can significantly reduce your ability to make good judgments and drive safely.

Don't Drink and drive

Alcohol and driving don't mix. Even one drink can reduce your ability to respond to changing conditions, and your reaction time gets worse with every additional drink. So don't drink and drive, and don't let your friends drink and drive either.

Never run your Go- Kart indoors.

The exhaust from the engine contains a tasteless, odorless and poisonous gas called carbon monoxide.

Keep away from moving parts of the Go-Kart

The operator of the Go-Kart should never place their hands or other parts of their body near any moving part of the Go-Kart. Failure to adhere to this warning will cause physical harm to your body.

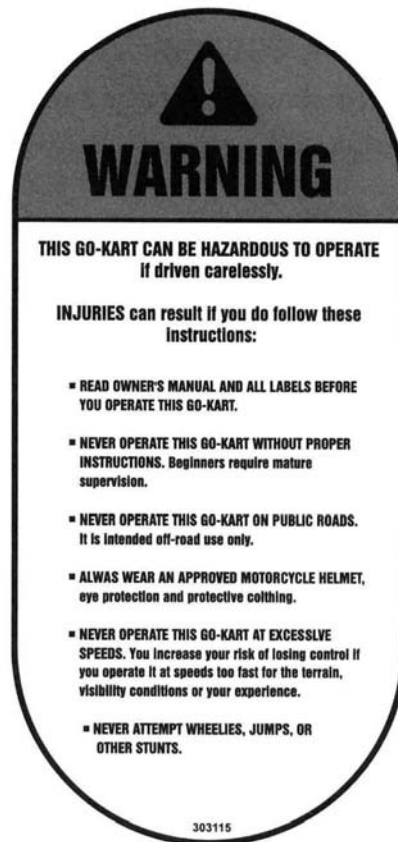
Skidding or Sliding

The terrain surface can be a major factor affecting turns, Skidding a turn is more likely to occur on slippery surfaces such as snow, ice, mud and loose gravel. If you skid on ice, you may lose all directional control. To avoid skidding on slippery terrain, keep you speed low and drive carefully.

SAFETY LABELS

This section presents some of the most important information and recommendations to help you drive your Go-Kart safely, Please a few moments to read these pages.

The labels are considered permanent parts of the Go-Kart. If a label comes off or becomes hard to read, contact your dealer for warning labels replacements.



ARE YOU READY TO DRIVE?

Before each drive, you need to make sure you and your Go-Kart are both ready to drive. To help get you prepared, this section discusses how to evaluate your driving readiness, what items you should check on your Go-Kart, and adjustments to make for your comfort, convenience, or safety.

Before you drive your Go-Kart for the first time, we urge you to:

- Read this owner's manual and the labels on your Go-Kart carefully.
- Make sure you understand all the safety messages.
- Know how to operate all the controls.
- Have adult present if under 16 years old.

Before each drive, be sure:

- You feel well and are in good physical and mental condition.
- You are wearing an approved motorcycle helmet (with chin strap tightened securely), eye protection, and other protective clothing.
- You don't have any alcohol or drugs in your system.

Protective Apparel

For your safety, we strongly recommend that you always wear an approved motorcycle helmet, eye protection, boots, gloves, long pants, and long-sleeved shirt or jacket whenever you drive.

Although complete protection is not possible, wearing proper gear can reduce the chance of injury when you drive.

The following suggestions will help you choose the proper driving gear.

Helmets and Eyes Protection

Your helmet is your most important piece of driving gear because it offers the best protection against head injuries. A helmet should fit your head comfortably and securely.

An open-face helmet offers some protection, but a full-face helmet offers more. Regardless of the style, look for a DOT (Department of Transportation) sticker in any helmet you buy. Always wear a face shield or goggles to protect your eyes and help your vision.



WARNING

Operating this Go-Kart without wearing an approved motorcycle helmet, eye protection, and protective clothing could increase your chances of head and/or eye injury, possibly death in the event of severe accident.

Always wear approved motorcycle helmet that fits properly and wear eye protection (goggles or face shield), gloves, boots, long-sleeved shirt or jacket and long pants.

Additional Driving Wear

In addition to a helmet and eye protection, we also recommend:

- Sturdy off-road motorcycle boots to help protect your feet, ankles, and lower legs.
- Off-road motorcycle gloves to help protect your hands.
- Driving pants with knee and hip pads, a driving jersey with padded elbows,

and a chest/shoulder protector.

Drive Training

Developing your driving skills is an on-going process. Even if you have derived other Go-Karts, take time to become familiar with how this Go-Kart works and handles. Practice driving the Go-Kart in a safe area to build your skills. Do not drive in rough terrain until you get accustomed to the Go-Kart's controls, and feel comfortable with its size and weight.

WARNING

Operating Go-Kart without proper instruction could increase your risk of an accident, which could lead to serious injury or death.

WARNING

Attempt supporting with your hands to the ground when the Go-cart turning over could lead to serious injury or death.

Never support with your hands to ground when the Go-cat will turn over.

Age Recommendation

It is strongly recommended that no one under the age of 16 be permitted this Go-Kart without adult supervision.

WARNING

A child driving a Go-Kart that is not recommended for his/her age could lose Go-Kart control and result in severe injury or death.

A child under 16 should have adult supervision when operate on the Go-Kart.

No Alcohol or Drugs

Alcohol, drugs and Go-Karts don't mix. Even a small amount of alcohol can impair your ability to operate a Go-Kart safely. Likewise, drugs-even if prescribed by a physician-can be dangerous while operating a Go-Kart. Consult your doctor to be sure it is safe to operate a vehicle after taking medication.

WARNING

Operating this Go-Kart after consuming alcohol or drugs can seriously affect your judgment, cause you to react more slowly, affect your balance and perception, and could result in serious injury or death.

Never consume alcohol or drugs before or while operating this Go-Kart.

IS YOUR VEHICLE READY TO DRIVE?

Before each drive, it is important to inspect your Go-Kart and make sure any problems you find are corrected. A pre-drive inspection is a must, not only for safety, but because having a breakdown, or even a flat tire, can be a major inconvenience.

If your Go-Kart has overturned or has been involved in a collision, do not drive it until your dealer has inspected your Go-Kart, There may be damages or other problems you cannot see.



WARNING

Improperly maintaining this Go-Kart or failing to correct a problem before driving can cause a crash in which you can be seriously hurt or killed.

Always perform a pre-drive inspection before every drive and correct any problems.

Pre-drive Inspection

Check the following items before you get on the Go-Kart:

- **Engine Oil**

Check the level and add oil if needed. Check for leaks.

- **Fuel**

Check the level and add fuel if needed. Also make sure the fuel fill cap is securely fastened. Check for leaks.

- **Tires**

Use a gauge to check the air pressure. Adjust if needed. Also look for signs of damages or excessive wear.

- **Nuts & Bolts**

Check the wheels to see that the axle nuts are tightened, Use a wrench to make sure all accessible nuts; bolts, and fasteners are tight.

- **Under body & Exhaust System**

Check for and remove any dirt, vegetation or other debris that could be fire hazard or interfere with the proper operation of the Go-Kart.

- **Air Cleaner Housing Drain Tube**

Check for deposits in the drain tube. If necessary, clean the tube and check the air cleaner housing.

- **Leaks, Loose Parts**

Walk around you Go-Kart and look for anything that appears unusual, such as a leak or loose cable.

- **Lights**

Make sure the headlight; brake light and taillight are working properly.

- Throttle
Check the free play and adjust if needed. Press the throttle to make sure it moves smoothly without sticking, and snaps back automatically when it is released.
- Brakes
Press the rear brake pedal several times, check for proper brake pedal free play. Make sure there is no brake fluid leakage.
- Engine Stop Button
When engine is running, press and hold the Engine Stop Button for two seconds. Make sure engine stops.
- Steering Wheel
Check that the wheels turn properly as you turn the steering wheel.
- Cable
Check the cable housing for wear. Check the fittings for looseness. Replace or tighten as needed.
- Tie rod
Check the tie rod housing for wear. Check the fittings for looseness. Replace or tighten as needed.

SAFE DRIVING PRECAUTIONS

Off-Road Use Only

You Go-Kart and its tires are designed and manufactured for off-road use only, not for pavement. Driving on pavement can affect handling and control. You should not drive your Go-Kart on pavement.



WARNING

Operating this Go-Kart on paved surfaces may seriously affect handling and control of the Go-Kart, and may cause the vehicle to go out of control.

Never operate the Go-Kart on any paved surfaces, including sidewalks, driveways, parking lots and streets.

When driving off-road, also remember to always obey local off-road driving laws and regulations. Obtain permission to drive on private property. Avoid posted areas and obey “no trespassing” signs.

You should never drive your Go-Kart on public streets, roads or highways, even if they are not paved. Drivers of street vehicles may have difficulty seeing and avoiding you, which could lead to a collision. In many states it is illegal to operate Go-Karts on public streets, roads and highways.



WARNING

Operating this Go-Kart on public streets, roads or highways can cause collision with other vehicle.

Never operate this Go-Kart on any public streets, roads or highways, even dirt or gravel one.

Keep Hands and Feet on Controls

Always keep both hands on the steering wheel and both feet on the foot controls. When driving your Go-Kart. It is important to maintain your balance and to control of the Go-Kart. Removing hands or foot away from the controls can reduce your ability to react control of the kart.



WARNING

Removing hand from Steering wheel or feet from foot controls during operation can reduce your ability to control the Go-Kart or could cause you to lose your balance and fall off the Go-Kart.

Always keep both hand on the steering wheel and both feet on the foot controls of your Go-Kart during operation.

Control Speed

Driving at excessive speed increases the chance of an accident. In choosing a proper speed, you need to consider the capability of your Go-Kart, the terrain,

visibility and other operating conditions, plus your own skills and experience.



WARNING

Operating this Go-Kart at excessive speeds increases your chances of losing control of the Go-Kart, which can result in an accident.

Always drive at a speed that is proper for your Go-Kart, the terrain, visibility and other operating conditions, and your experience.

Use Care on Unfamiliar or Rough Terrain

Before driving in a new area, always check the terrain thoroughly. Don't drive fast on unfamiliar terrain or when visibility is limited. (It's sometimes difficult to see obstructions like hidden rocks, bumps, or holes in time to react).



WARNING

Failure to use extra care when Operating this Go-Kart on unfamiliar terrain could result in the Go-Kart overturning or going out of control.

Go slowly and be extra careful when operating on unfamiliar terrain. Always be alert to changing terrain conditions when operating the Go-Kart.

Never drive past the limit of visibility. Maintain a safe distance between your Go-Kart and other off-road vehicles. Always exercise caution and use extra care on rough, slippery and loose terrain.



WARNING

Failure to use extra care when operating on excessively rough, slippery or loose terrain could cause loss of traction or vehicle control, which could result in an accident, including an overturn.

Do not operate on excessively rough, slippery or loose terrain until you have learned and practiced the skills necessary to control the Go-Kart on such terrain. Always be especially cautious on these kinds of terrain.

Do Not Perform Stunts

You should always operate your Go-Kart in a safe and reasonable manner. When driving, always keep all four wheels on the ground.



WARNING

Attempting wheelies, and other stunts increases the chance of an accident, including an overturn.

Never attempt stunts, such as wheelies or jumps. Don't try to show off.

SPECIFICATIONS

DIMENSIONS

Overall Length	93 in. (2380mm)
Overall Width	54.3 in. (1380mm)
Overall Height	65.4 in. (1660mm)
Wheelbase	72.8 in. (1850mm)
Front Track	47 in. (1200mm)
Rear Track	43.5 in. (1105mm)
Ground Clearance	4.7 in. (120mm)

ENGINE

Type	Liquid-cooled, 4-Stroke
Bore x Stroke	72mmx60mm
Displacement	244 cc
Corrected compression ratio	9.2:1
Carburetor	KEI HIN; No. VE 14CEQKY
Output Power	16.75hp/7500rpm
Maximum Torque	17.6/5500Nm/r/min
Starting	Electric
Ignition	C.D.I.
Lubrication	Force & Splash
Transmission	Automatic (C.V.T system)
Spark Plug	DPR5EA-9 (NGK), DPR6EA-9 (NGK), DPR7EA-9 (NGK)
Plug gap	0.6-0.7mm
Fuel type	RQ90 (unleaded)
Lubricate oil	SAE-10W/30

CAPACITIES

Maximum load	Double Seats/400lbs
Fuel tank	16.0L
Engine oil	1000ml
Coolant	1800ml
Starting	<5s
Climbing	20°-25°
Battery	12V 9Ah
Head Light	12V 15W
Tail Light	12V 10W/5W
Fuse	10A
Brake Track	< 7m @ 20miles/h
Top speed	30miles/h (or limited as customers require)

CHASSIS

Front, Rear brake	Hydraulic disc, right foot control
Front tire	21x8-10
Rear tire	22x10-10
Front Suspension	Independent Dual A-Arm
Rear Suspension	Trailing Arm/Double Oil Damped Shock
Restraint System	Dual 4-point Harness
Final Drive Chain	(KMC) O-Ring Chain

TIRE PRESSURE

Front	15kpa 0.5kg/c m ² 2.2psi
Rear	20kpa 0.20kg/c m ² 2.9psi

WEIGHT

Net Weight	330kg/ 728 lbs
------------	----------------

WARRANTY

Parts and workmanship	90 Days
-----------------------	---------

OPERATION

A. Operation controls

WARNING-Do not attempt to start or operate the engine until completely familiar with the location and use of each control necessary to operate this vehicle. The operator must know how to stop this machine before starting and driving it.

a. Throttle

The right foot pedal is the throttle that controls the Go-Kart speed. As the engine speed increased above idle, the clutch automatically engages and moves the vehicle forward. To disengage the clutch at any time, allow the throttle to return to the idle position. (See Fig. 1)



WARNING

Each time prior to starting the engine, check the throttle assembly to ensure that when pedal is pushed all the way forward the assembly is working smoothly and returns to idle when released. Do not operate if pedal or engine throttles linkage fail to return to idle. If unable to correct the problem through lubrication, adjustment or replacement of worn parts, contact your dealer for assistance.

Brake

The brake is located on the left side of the kart (See Fig. 1). Applying pressure to the pedal draws the brake caliper around the brake pump at the rear wheel and slows or stops the kart.

BRAKE PEDAL

THROTTLE PEDAL



Figure 1

Start engine

Insert the key into key-switch, turn the key clockwise, and release the key when the engine starts. The engine will warm up within 5 minutes and the engine choke will close automatically and operate at normal RPM (Warning: Don't crank starter more than 5 seconds at one time). (See Figure 2)

IGNITION START SWITCH

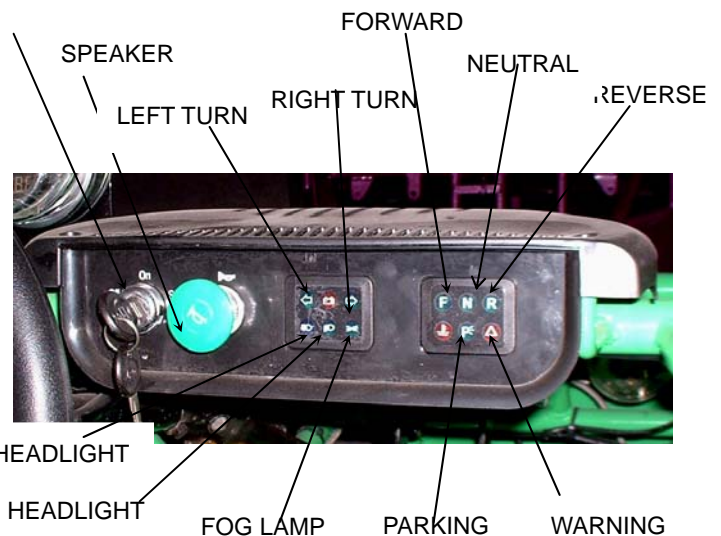


Figure 2



Figure 3

B. Pre-Drive Inspection



WARNING

Perform this pre-drive inspection everyday before driving vehicle. If not performed, serious damage to the vehicle or personal injury may result.

- b. Check for Engine Oil Level. Check for leaks, add oil if required.
- c. Check for Fuel Level. Add fuel as necessary and do not overfill. Check for leaks.
- d. Check for Brakes. Depress the rear brake pedal several times, and then check for proper brake pedal free play. Make sure there is no brake fluid leakage. Adjust if necessary.
- e. Check Tires. Check tires condition and pressure. The pressure on both Front and Rear tire is 15kpa and 20kpa.
- f. Check Drive Chain. Check for drive chain's condition and tension. Lubricate if necessary.
- g. Check Throttle. Check for smooth operation. Assure throttle "snaps" back to idle.
- h. Check Engine Stop Button. Perform engine stop button test. Repair as necessary.
- i. Check all Nuts, Bolts, and fasteners. Check wheels to see that all axle nuts and lug nuts are tightened properly. Check and tighten as necessary all other fasteners to specified condition.
- j. Check Roll Cage Bar. Ensure all protective roll cage bar are in place before operating the Go-Kart.
- k. Check Brake Light. Check for proper operation.
- l. Check Wheels. Check for tightness of wheel nuts and axle nuts; check that axle nuts are secured by cotter pins.
- m. Check Steering. Check for free operation for any unusual looseness in any area.



WARNING

Always follow rules for safe operation and wear a helmet.

C. Passengers

The vehicle allows for two riders only.
Combine maximum weight of driver
And the passenger should not exceed 180kg
or 400lbs.

D. Seat Adjustment

The seat must always be securely fastened in the position which best affords the operator control of the foot pedals, steering wheel, and the remote stop button.



Figure 4

- Pull seat adjustment handle upward to disengage seat slide.
- Move seat to desired position.
- Be sure seat adjustment handle snaps back into place and that seat is locked into position.



WARNING

Before attempting to adjust the seat ensure that engine of the Go-Kart is stopped.



WARNING

Never operate this Go-Kart when the provided seat is not securely fastened, to do so could result in a strong possibility of severe personal injury or loss of life. Before attempting to adjust the seat ensure that engine of Go-Kart is stopped.

E. Shift Adjustment



Forwards



Neutral

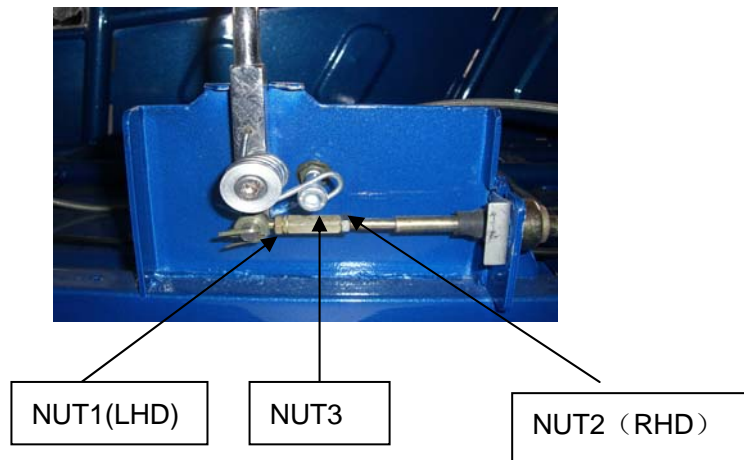


Reverse

Figure 5

- Press down the shift lever to the "F" position so that the unit can move forward, Pull back the shift to "N" position so that the unit can't move because of in the neutral, pull back the lever to "R" so that the unit can move backward. (See Fig. 5)
- Loosen nut #1 and #2. Adjust nut #3 can adjust the mesh status inside

reverse gear box. Make sure the shift lever can be on the four positions (F,N,R) cleanly. Then tighten the nuts #1, # 2.



WARNING

Never engage the shift lever when the Go-kart is in motion
Only engage the shift lever when the Go-kart is at a full stop
Give a slight throttle and loosen throttle, then engage shift from neutral to shift.
The shift lever must be on neutral and pull parking lever when leave the Go-kart

F. Parking Adjustment

a. Press down the reverse lever to the “F” position so that the unit can move forwards; pull back the lever to “P” so that the unit can park. (See Fig. 6) Adjust Nut #1; Make sure cable is not too tight or too loose. Adjust Nut #2 accordingly to adjustment of Nut #1. Figure 6

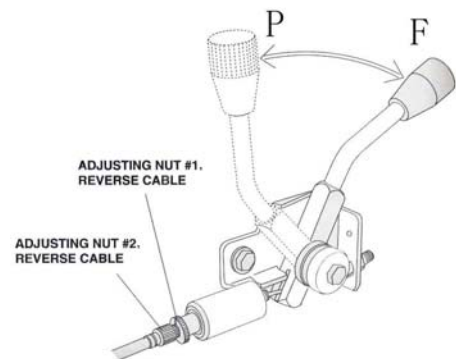


Figure 6

G .Starting And Operating Instructions

- a. Before starting the engine, be sure that the driver is seated properly in the Go-Kart and tighten the seatbelt.
- b. Testing the Go-Kart in an open place at the beginning to learn how to start, turn and stop.
- c. Operate the Go-Kart slowly until you are familiar with it.
- d. The turning radius of this Go-Kart is small and agile, so the centrifugal force is very high when turning at high speed. Slow down to a more controllable speed when turning to prevent the Go-Kart from rolling over.
- e. To prevent vehicle from rolling over, be sure to only turn the vehicle at a slow more controllable speed. Heel on the ramp of the main board when turning, Keep your leg rely on the foot pedal, you can feel the kart is stable because of the gravity is adjusted and won't roll over.

SERVICE INSTRUCTION

A. Service Air Cleaner

Service air cleaner every 80 hours.

Service more often under dusty conditions.

- a. Remove cleaner cover 1
- b. Remove air cleaner element 2 (See Fig. 7)
- c. Check the paper filter, if the filter is dusty, please replace with a new one.

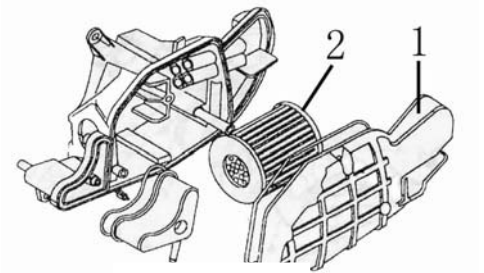


Figure 7

B. Engine Lubrication

You must change the oil in the crankcase after the first 5 hours of operating of your new engine (See Fig. 9) and after 10 hours of use thereafter. That will insure proper lubrication of internal parts and prevent costly repairs due to excessive wear.



WARNING

Never operate this Go-Kart when the provided seat is not securely fastened, to do so could result in a strong possibility of severe personal injury or loss of life.

- a. Remove fill plug located on rear side of engine. Tip kart backwards slightly by blocking up the front end and drain oil into suitable container.
- b. Replace fill plug and tighten securely. Place kart in a level position.
- c. Refill crankcase (approximately 1000 ml) to top of filler neck with SAE 10W/30 oil. Use same grade of oil as used originally.
- d. Check oil level before each use of kart or after each 10 hours of operation. Add oil to bring up to proper level. Do not mix various grades of oil.

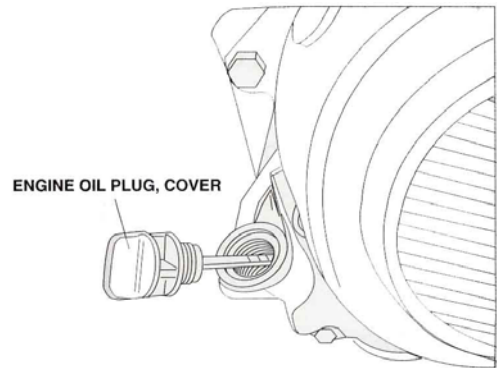


Figure 8

C. Engine Coolant

You should check the coolant for lack. If lack, you need to refill coolant into the radiator (approximately 1800 ml) or reserve coolant. The lack of coolant will cause engine overheat. This can cause engine damage.

D. Spark Plug

a. Remove the spark plug and inspect it each time you change the oil. (Use a spark plug wrench) The electrodes should be kept clean and free of carbon. The presence of carbon or excess oil will greatly reduce proper engine performance. If possible, check the spark plug gap (area between electrodes) using a wire feeler gauge. This specification is 0.025"~0.030".

b. Before installing spark plug coat threads lightly with graphite grease if possible, to ensure easy removal next time the spark plug needs inspection.

c. It is advisable to replace the spark plug at least once a year to insure easy starting and good engine performance.

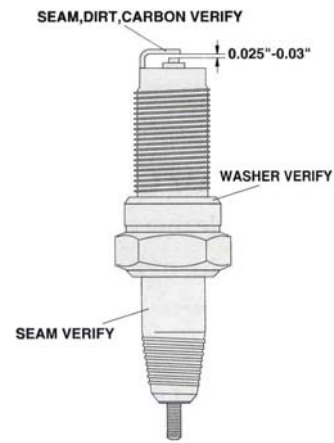


Figure 8

E. Carburetor Adjustment

Never make unnecessary adjustments. The factory recommended settings are correct for most applications. It's not necessary to disassemble the screw unless the carburetor needs to be replaced. Prepare a 50r/w tachometer before adjustment.

a. Warm up the engine (5~10min)

b. Tighten the airscrew gentle. Back out 2-3/8 turns counter clockwise.

c. Connect the tachometer; adjust the throttle to limit the idle speed. The standard value is (1400RPM).

d. Turn the airscrew counter slowly and observe the RPM of the engine, stop adjusting as the RPM reaches the top speed.

e. Adjust the screw and adjust the idle speed to an ideal value.

f. Repeat step 4 and 5 until the rotate speed of engine stables.

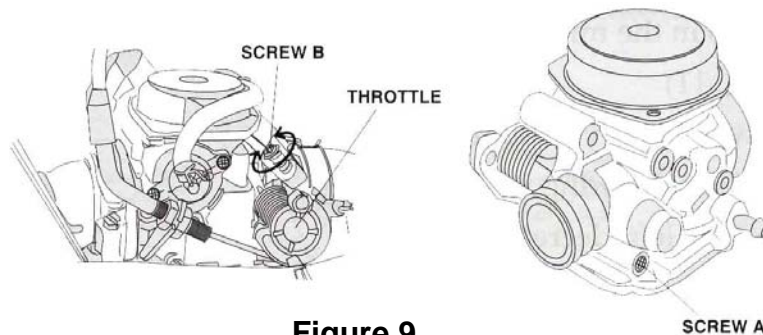


Figure 9

F. Cleaning Instructions

Keep your kart clean. With a clean rag, wipe off any dirt and oil from around controls. Wipe off any spilled fuel and oil. Keep the engine clean of foreign object and be sure to check that air intake fan is free of debris for proper cooling.

G. Kart Lubrication

Lubricate vehicle every 90 days of use, Apply several drops of oil in specific points.

H. Chain Lubrication

To increase chain life, it should be lubricated with a spray on type chain

lubricant.

I. Chain Adjustment

Check the chain adjustment after first two hours of use. Readjust if it has more than 1/2" flex. (See figure 12)

- a. Loosen 12 Bolts
- b. Insert the special tools into the holes, Rotate the axle clockwise to adjust the chain for a right position. At the same time, keep the same distance of two end of axle to fixed points which fixed rear swingarm on frame.
- c. Tighten the 12 bolts.

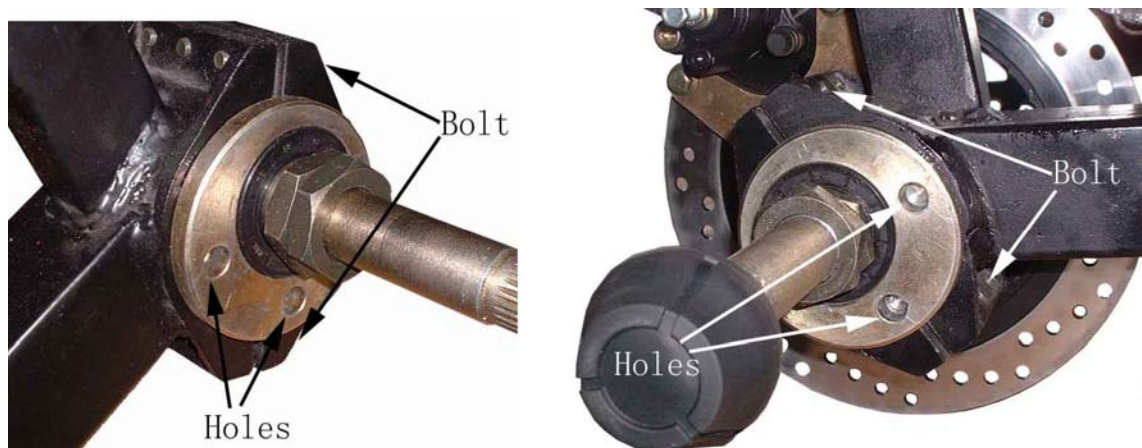


Figure 12

J. Storage Instruction

In the event your kart is not to be operated for periods in excess of 30 days or at the end of each driving season prepare for storage as follows:

- a. Drain fuel tank and carburetor by allowing engine to run out of fuel, or use a fuel stabilizer.
- b. Lubricate engine cylinder by removing the spark plug and pour one ounce of clean lubricating oil through the spark plug hole into the cylinder. Crank the engine slowly to spread oil and replace spark plug.
- c. Do not save or store gasoline over winter. Using old gasoline, which has deteriorated from storage, will cause hard starting and affect engine performance.



WARNING

Do not drain fuel while engine is hot. Be sure to move Go-Kart outside before draining fuel.

REPAIR

A. Front Wheel Replacement

Do not disassemble the castle nuts when you replace the front wheels.

It is only necessary to tighten the nuts so that the wheel turns freely on the axle with minimum end play. (See Fig. 13) Tighten the nuts after replacing the wheels.

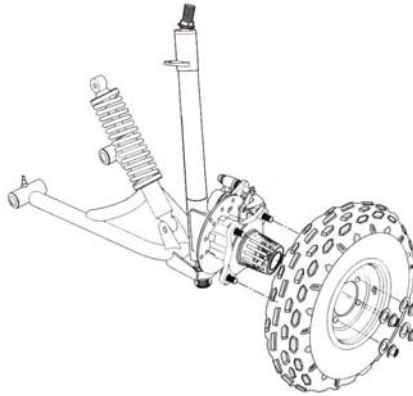


Figure 13

B. Rear Wheel Replacement

Do not disassemble the castle nuts when you replace the front wheels.

It is only necessary to tighten the nuts so that the wheel turns freely on the axle with minimum end play. (See Fig. 14) Tighten the nuts and put on the cotter Pin after replacing the wheels.

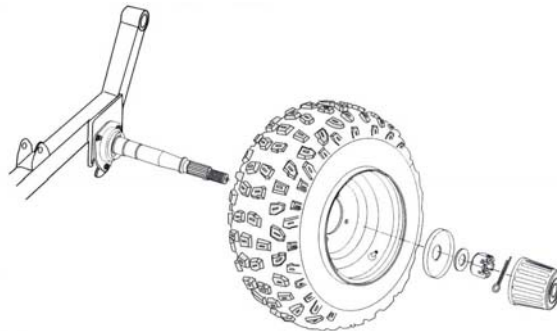
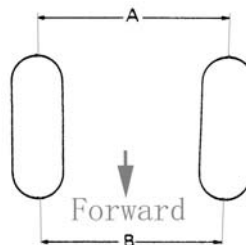


Figure 14

C. Front Wheel Alignment

a. The front wheels should be “toe-in” from 1/8” to 1/4”. To check for alignment, measure distance A and B between the centerline (CL) of the wheels. The proper toe-in dimension A should be 1/8”-1/4” greater than dimension B.

b. To adjust the alignments, loose the lock nuts on both sides of Front Tie Rods. To make Dimension B smaller, scare the rod to the left. Adjust the rod to right direction to make Dimension B larger. After adjusted to desired length, tighten the lock nut against the rod end. Recheck the dimensions for proper alignment.



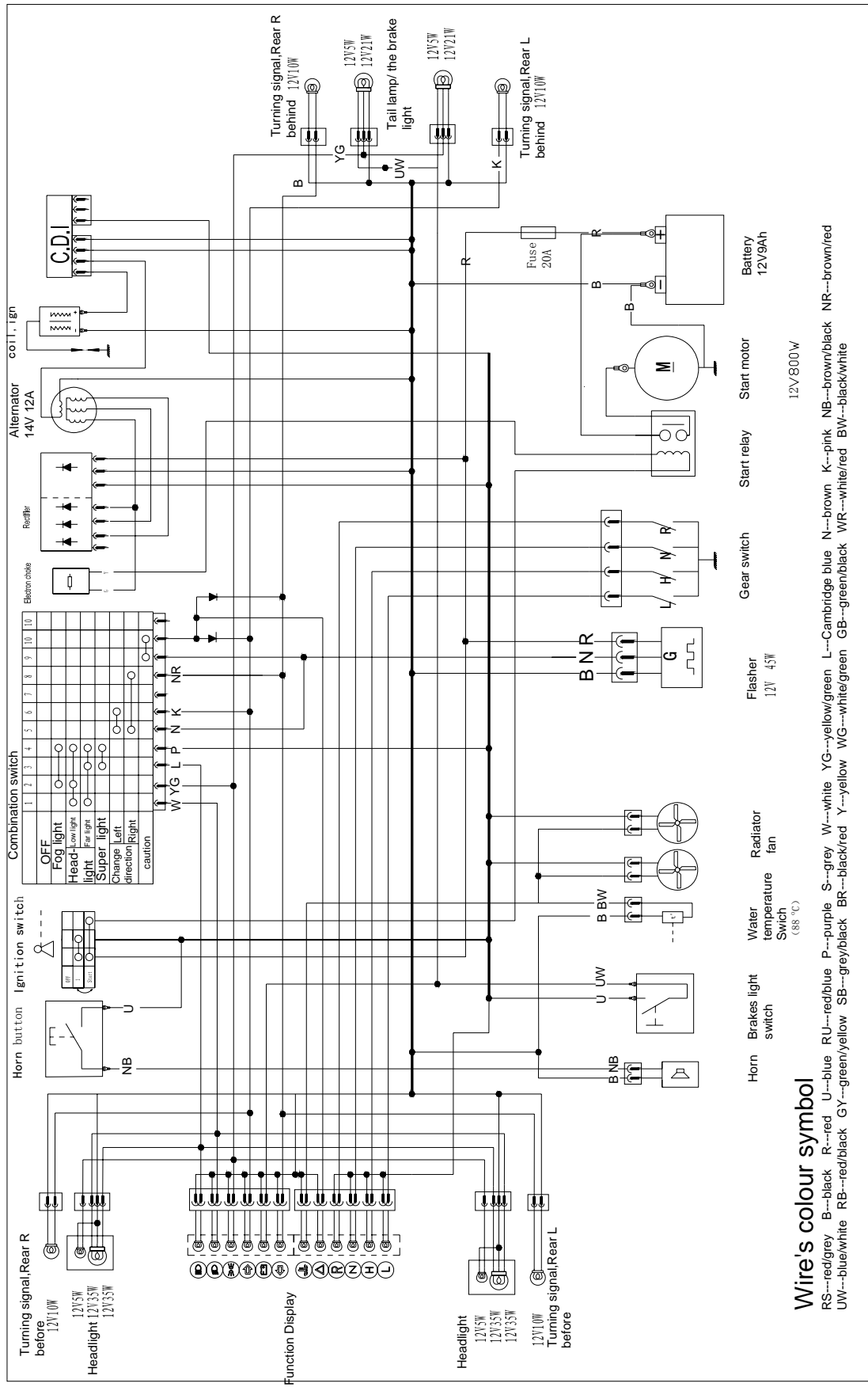
PERIODICAL CHECK AND SERVICES

The maintenance intervals in the following table are based upon average driving conditions. Driving in unusually dusty areas, require more frequent servicing.

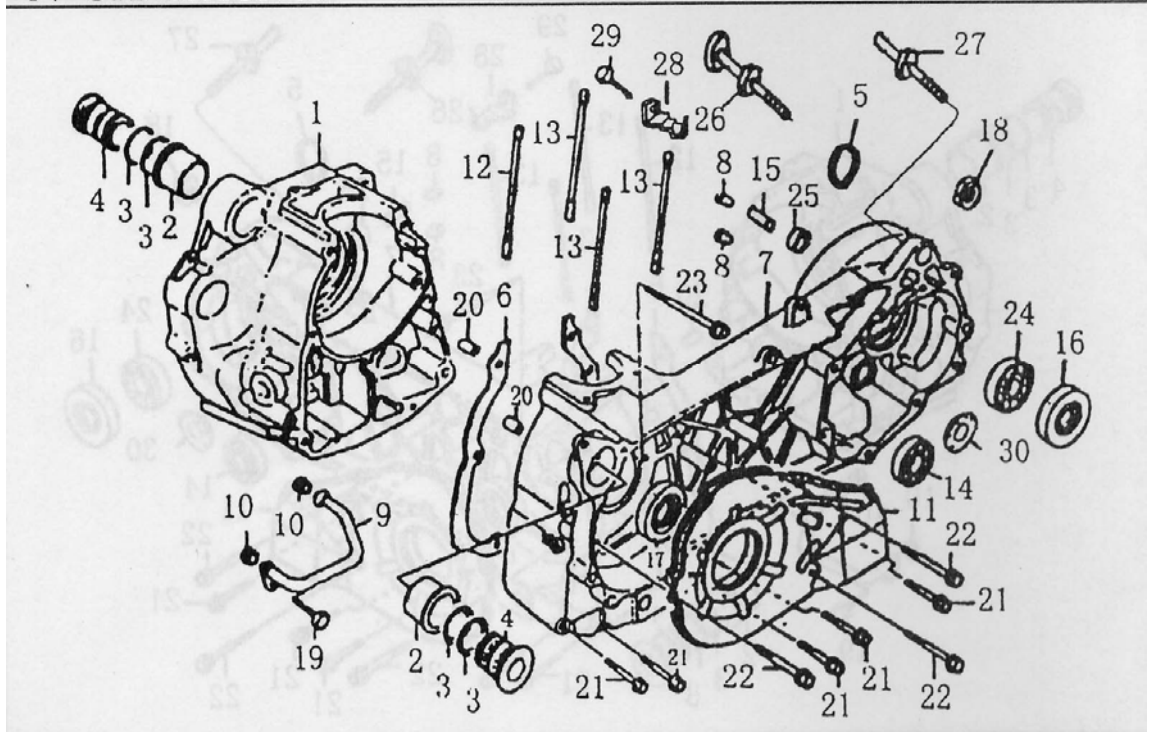
Time of Items service	Initial service (First week)	Monthly	Quarterly	Yearly
Tire pressure/wear	I	I		
Brake performance	I	I		
Tightness of screws	I	I		
Air cleaner			C	I
Carburetor	I	A		C
Spark plug			C, A	
Drive chain	I	I	C, A, L	
Brake oil			I	
Replace gearbox oil		I	R	
Replace coolant		I	R	
Chassis		C, I	L	
Fuel switch/fuel tank		I		C
Battery			I	
Valve clearance of engine			A	

A: adjust **C:** clean **I:** inspect, clean or replace if necessary. **L:** lubricate **R:** replace

WIRING DIAGRAM



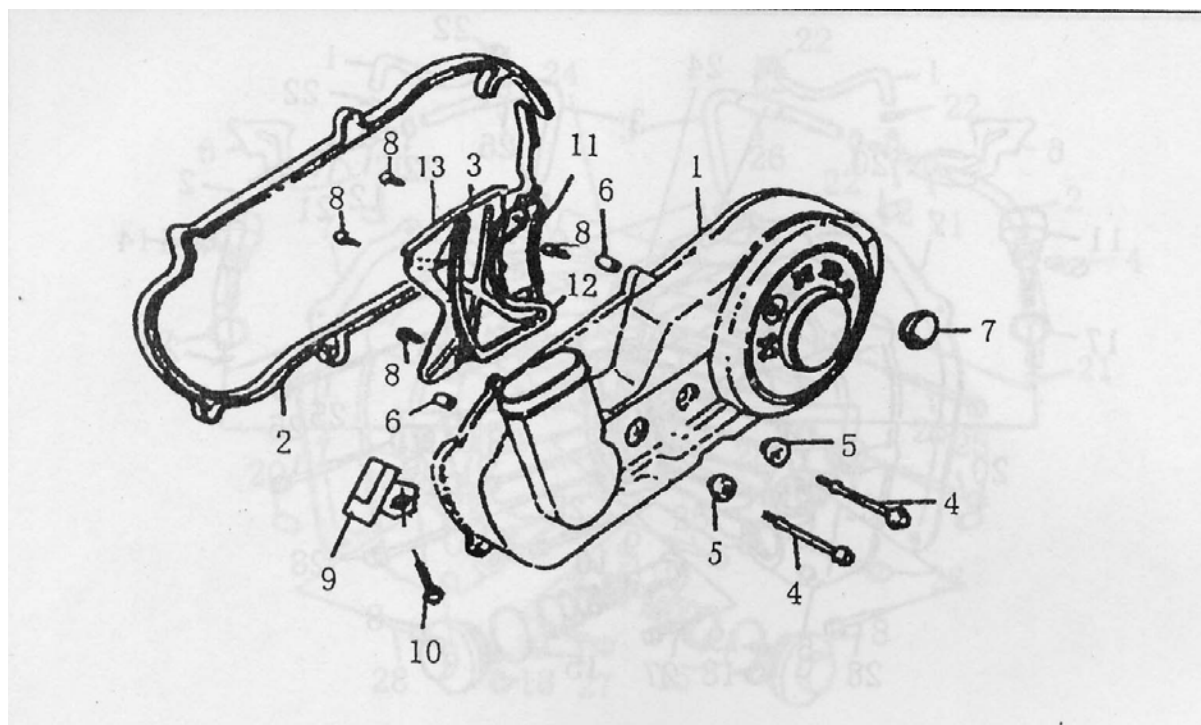
1、CRANKCASE ASSY.



No.	P/N	ENGLISH	Q'ty
1	172MM-011200	Right crankcase comp.	1
2	152MI-011010	Outer bush, engine hanger	2
3	152MI-011008	O-ring, 15.8×2.4	1
4	152MI-011009	Inner bush, engine hanger	2
5	152MI-011013	O-ring, 7.5×1.5	1
6	172MM-011003	Gasket, crankcase	1
7	172MM-011100	Left crankcase comp.	1
8	172MM-011014	Cushion washer, brake shoe	2
9	172MM-011400	Inner oil pipe set	1
10	172MM-011002	Seal ring, inner oil pipe	2
11	172MM-011300	Heat insulator comp.	1
12	172MM-011005	Bolt B, cylinder stud	1
13	172MM-011004	Bolt A, cylinder stud	3
14	NTN: TMB301	Bearing	1
15	172MM-011007	Bush, fixing pin	1
16	172MM-011009	Seal, 34×52×5	1
17	172MM-011001	Seal, 28×40×8	1
18	152MI-011700	Thrust nut, M8	1
19	152MI-021019	Bolt, M6×12	1
20	152MI-021005	Dowel pin, $\phi 10 \times 14$	2
21	152MI-011017	Bolt, M6×60	5
22	152MI-011018	Bolt, M6×70	3
No.	P/N	ENGLISH	Q'ty
23	152MI-011016	Bolt, M6×125	1
24	NTN: 6205LLU	Bearing	1

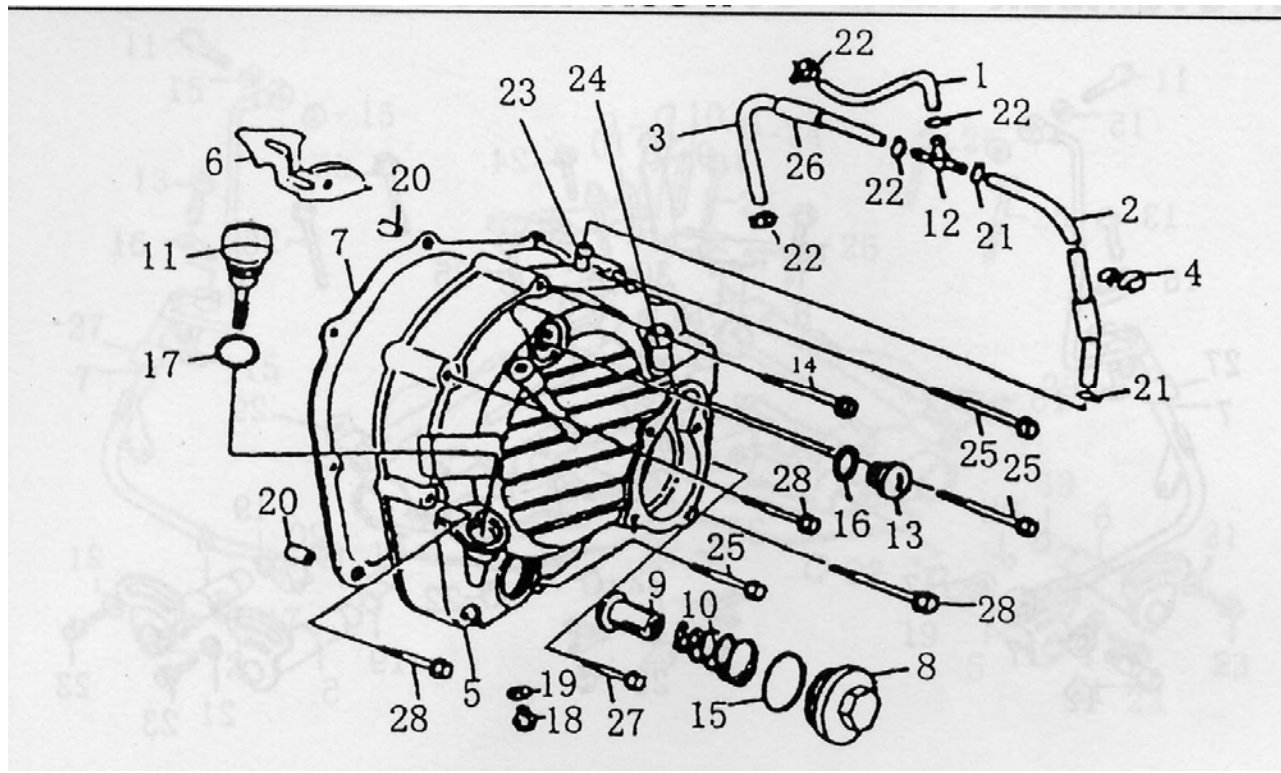
25	172MM-011008	Seal, 14×20×3.5	1
26	172MM-011010	Fixing pin, brake shoe	1
27	172MM-011006	Rear hanger shaft	1
28	172MM-011011	Clamper, brake cable	1
29	152MI-090005	Bolt, M6×16	1
30	NTN:HMK1416	Bearing, needle	1

2、left side cover assy.



No.	P/N	ENGLISH	Q'ty
1	172MM-012001	Left side cover	1
2	172MM-012007	Sealing bar, left side cover	1
3	172MM-012004	Retaining plate	1
4	172MM-012003	Bolt, cover plate	2
5	152MI-012200	Cushion block comp.	2
6	152MI-011007	Dowel pin, $\phi 10 \times 16$	2
7	172MM-012008	Plug, inspection	1
8	GB/T818-2000-M5 \times 8	Flat screw	4
9	172MM-012100	Clamp set	1
10	152MI-090005	Bolt, M6 \times 16	1
11	172MM-012002	Anti-dust bar A	1
12	172MM-012006	Anti-dust bar B	1
13	172MM-012005	Felt mat	1

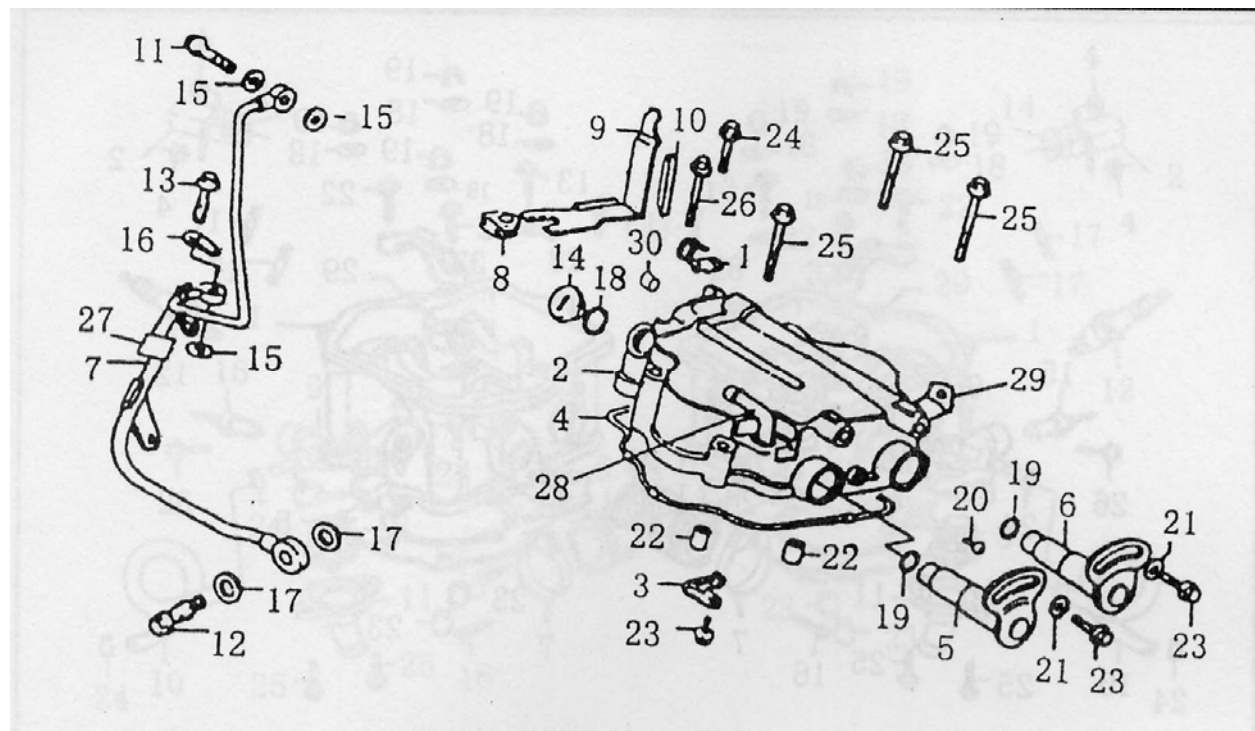
3、right side cover assy.



No.	P/N	ENGLISH	Q'ty
1	172MM-013013	Hose, breather	1
2	172MM-013100	Hose comp., right side cover	1
3	172MM-013015	Hose, air cleaner	1
4	172MM-013016	Hose clip	1
5	172MM-013002	Right side cover	1
6	172MM-013008	Retaining plate	1
7	172MM-013012	Gasket, right side cover	1
8	172MM-013007	Cover, strainer	1
9	152MI-013100	Filter element comp.	1
10	172MM-013006	Spring	1
11	172MM-013001	Guide, oil level	1
12	172MM-013019	T joint, breather	1
13	152MI-021008	Plug, inspection	1
14	172MM-01303	Bolt, M6×80	1
15	172MM-013028	O-ring, 18×3.55	1
16	152MI-021009	Drain plug, M12×1.5	1
17	172MM-013030	O-ring, 18×3.55	1
18	172MM-013005	Drain plug, M12×1.5	1
19	152MI-021014	Washer	1
20	152MI-080008	Dowel pin, $\phi 8 \times 14$	2
21	QC/T621-1999-A10	Clip	2
No.	P/N	ENGLISH	Q'ty
22	QC/T621-1999-A12	Clip	4

23	172MM-013010	Joint, breather	1
24	172MM-013009	Joint, breather	1
25	152MI-013009	Bolt, M6×40	3
26	172MM-013026	Oversleeve, hose	1
27	152MI-071007	Bolt M6×28	1
28	152MI-011018	Bolt M6×70	3

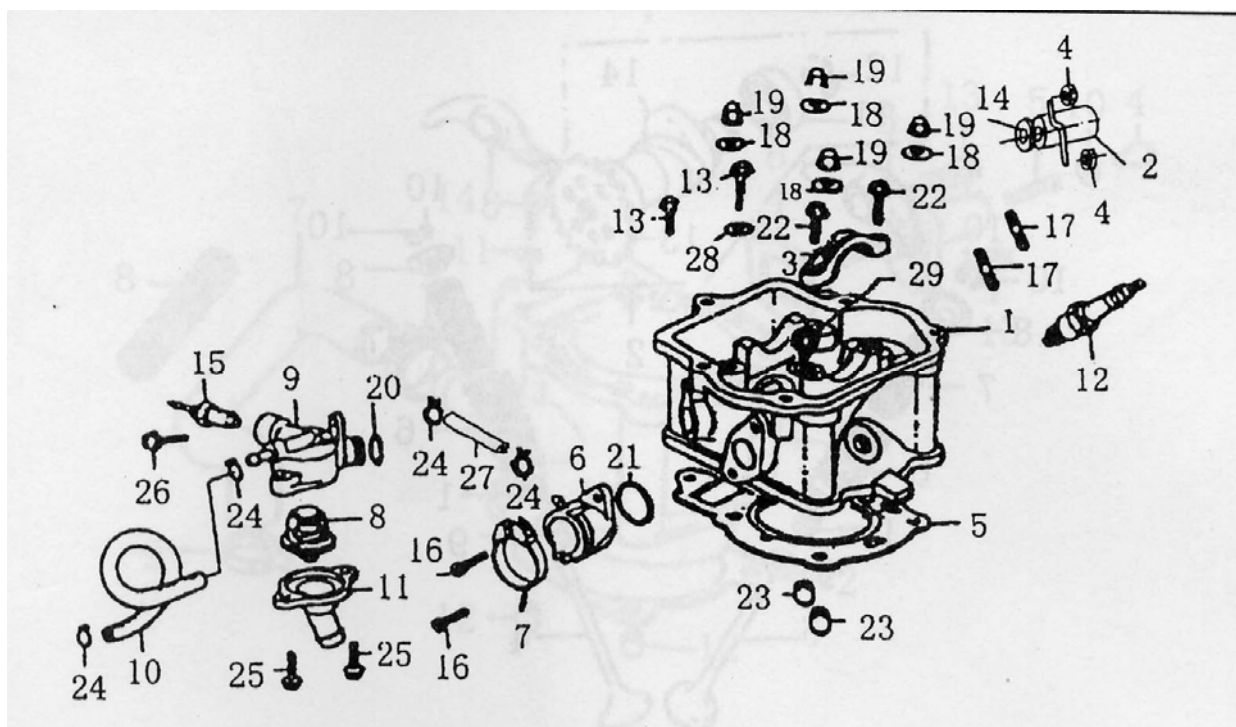
4、cylinder head cover assy.



No.	P/N	ENGLISH	Q'ty
1	172MM-021009	Clip	1
2	172MM-021001	Cover, cylinder head	1
3	172MM-021006	Retaining plate	1
4	152MI-021011	Gasket, cylinder head cover	1
5	172MM-021100	Axle comp, intake rocker	1
6	172MM-021200	Axle comp, exhaust rocket	1
7	172MM-021400	Outer oil pipe comp.	1
8	152MI-021001	Rubber right, oil pipe	1
9	172MM-021431	Holder, oil pipe	1
10	152MI-021003	Cushion bar	1
11	152MI-021004	Joint bolt A, M8×25	1
12	152MI-021015	Joint bolt, M12×1.25	1
13	152MI-021013	Joint bolt C, M8×25	1
14	152MI-021008	Cap, top inspection	1
15	152MI-021016	Washer 8	3
16	152MI-021012	Washer	1
17	152MI-021014	Washer 12	2
18	152MI-021009	Seal ring, top cap	1
19	152MI-021010	Seal ring, rocker axle	2
20	GB/T818-2000-M5 16-D.Cr	× Flat screw	1
21	GB/T848-85-6-D.Cr	Washer	2
22	152MI-021005	Dowel pin, φ10×14	2
No.	P/N	ENGLISH	Q'ty

23	152MI-021019	Bolt, M6×12	3
24	152MI-021017	Bolt, M6×25	1
25	152MI-013010	Bolt, M6×50	3
26	152MI-021018	Bolt, M6×55	1
27	172MM-021404	Cushion oversleeve	1
28	172MM-021002	Pipe joint, breather	1
29	172MM-021300	Holder comp, air cleaner	1
30	172MM-021008	Block weight	1

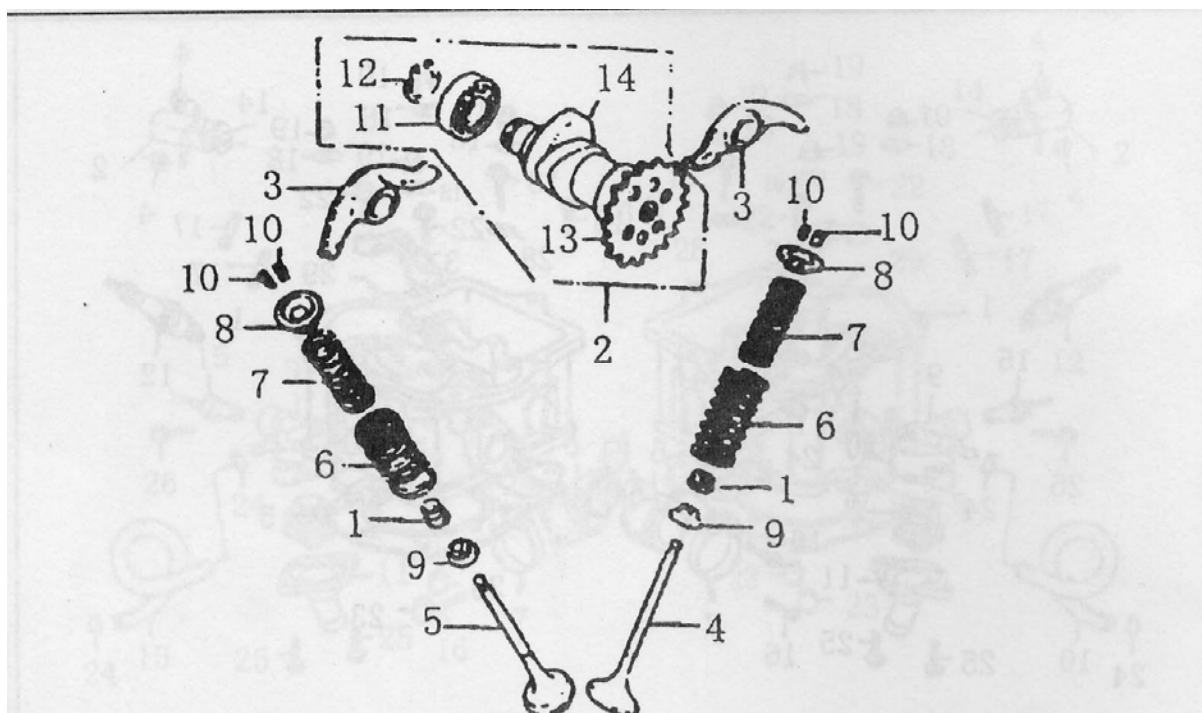
5、cylinder head assy.



No.	P/N	ENGLISH	Q'ty
1	172MM-022100	Cylinder head comp.	1
2	172MM-022700	Flange comp, exhaust pipe	1
3	152MI-022014	Cover, camshaft bearing	1
4	172MM-022008	Nut, exhaust pipe	2
5	172MM-022010	Gasket, cylinder head	1
6	172MM-022900	Joint comp, carburetor	1
7	172MM-022500	Clamp set, intake	1
8	152MI-022810	Thermostat comp.	1
9	152MI-022803	Upper case, thermostat	1
10	152MI-022021	Cooling hose 1, carburetor	1
11	172MM-022601	Lower case, thermostat	1
12	172MM-022400	Spark plug comp.	1
13	152MI-021017	Bolt, M6×25	2
14	172MM-022800	Gasket, exhaust pipe	1
15	152MI-022600	Sensor, water temp	1
16	GB/T6191-1986-M6 18-D.Cr	× Bolt, M6×18	2
17	172MM-022007	Bolt stud M7×40	2
18	152MI-022012	Washer 8	4
19	152MI-022013	Nut M8	4
20	152MI-022804	O-ring 14.8×1.9	1
21	172MM-022009	O-ring 31×2	1
22	152MI-022020	Bolt, M6×22	2
No.	P/N	ENGLISH	Q'ty

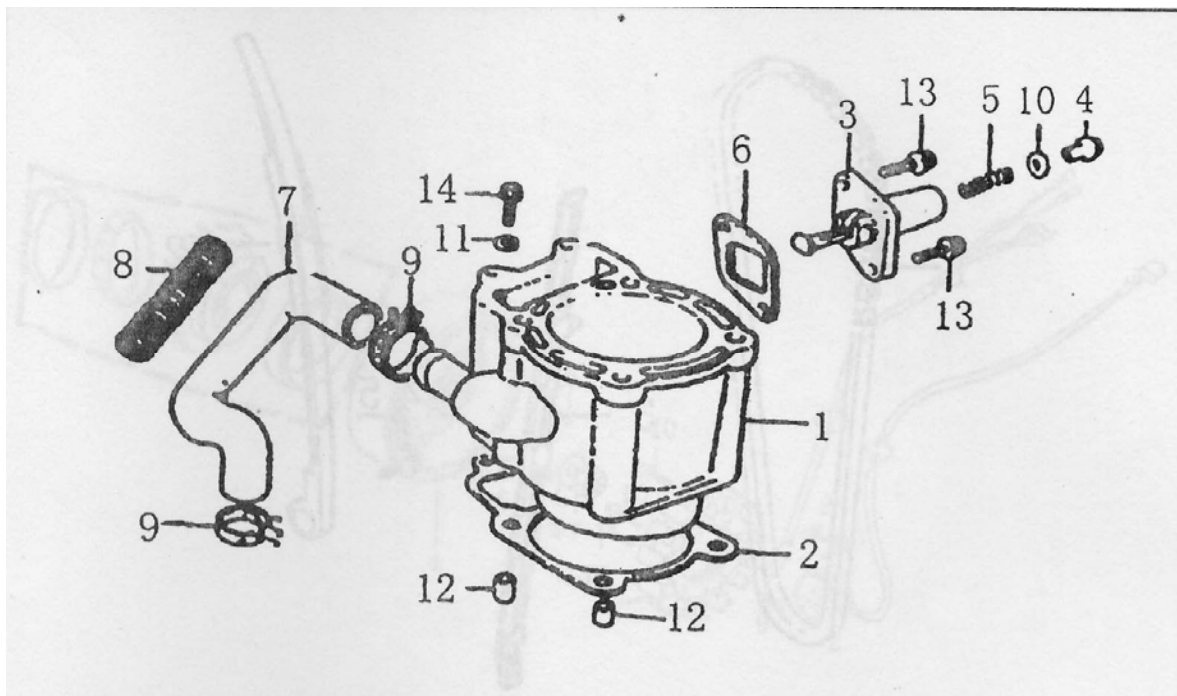
23	152MI-021005	Dowel pin, $\phi 10 \times 14$	2
24	QC/T621-1999-A6.5	Clamp	2
25	152MI-090005	Bolt, $M6 \times 16$	2
26	152MI-023008	Bolt, $M6 \times 18$	1
27	152MI-022017	Hose, breather	1
28	GB/T848-85-6-D.Zn	Washer	1
29	152MI-022303	Plug block, $M12 \times 1$	1

6、air mix device



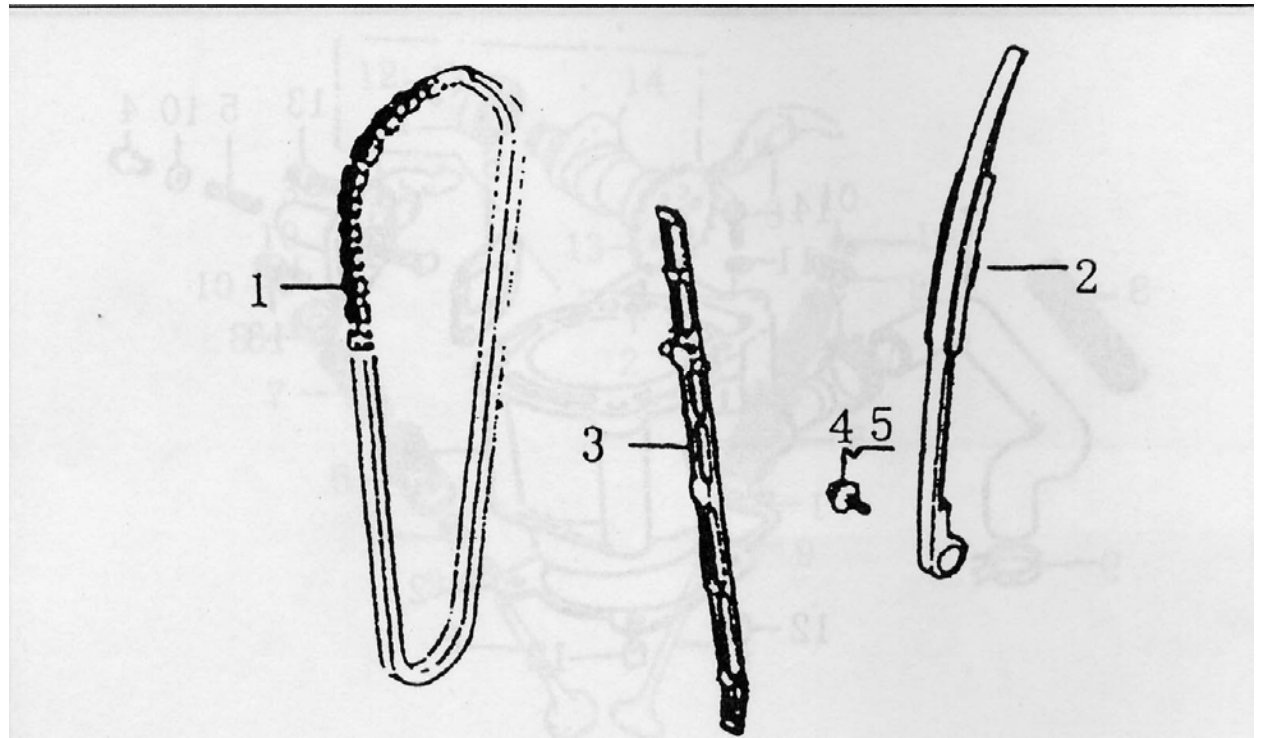
No.	P/N	ENGLISH	Q'ty
1	152MI-022500	Seal ring set	2
2	172MM-*022300	Camshaft comp.	1
3	152MI-021007	Arm, valve rocker	2
4	172MM-022001	Valve, intake	1
5	172MM-022005	Valve, exhaust	1
6	172MM-022002	Outer spring, valve	2
7	172MM-022003	Inner spring, valve	2
8	152MI-022005	Retainer, valve spring	2
9	152MI-022001	Seat, valve spring	2
10	152MI-022006	Valve clip	4
11	NTN: 16002	Bearing	2
12	GB894.1-86-15	Cir clip	1
13	172MM-022310	Sprocket comp.	1
14	172MM-022301	Camshaft	1

7、cylinder body assy.



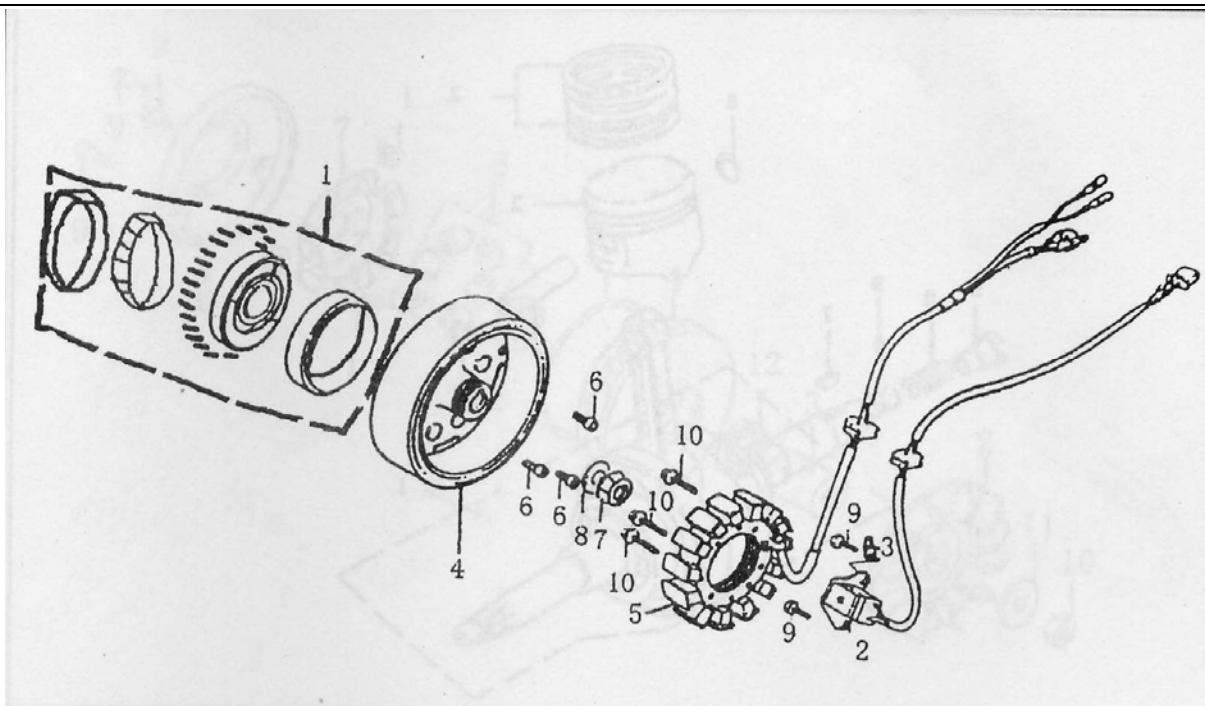
No.	P/N	ENGLISH	Q'ty
1	172MM-023100	Cylinder body comp.	1
2	172MM-023002	Gasket, cylinder	1
3	152MI-023300	Tensioned comp.	1
4	152MI-023003	Bolt, spring holder	1
5	152MI-023002	Spring	1
6	152MI-023004	Gasket, tensioned	1
7	172MM-023007	Hose, water inlet	1
8	172MM-023009	Guard shield, water pipe	1
9	QC/T621-1999-B24	Clamp	2
10	152MI-023009	Washer 8.5	1
11	GB/T848-85-6-D.Zn	Washer	1
12	152MI-021005	Dowel, $\phi 10 \times 14$	2
13	152MI-023008	Bolt, M6 \times 18	2
14	152Mi-080013	Bolt, M6 \times 22	1

8、camshaft chain



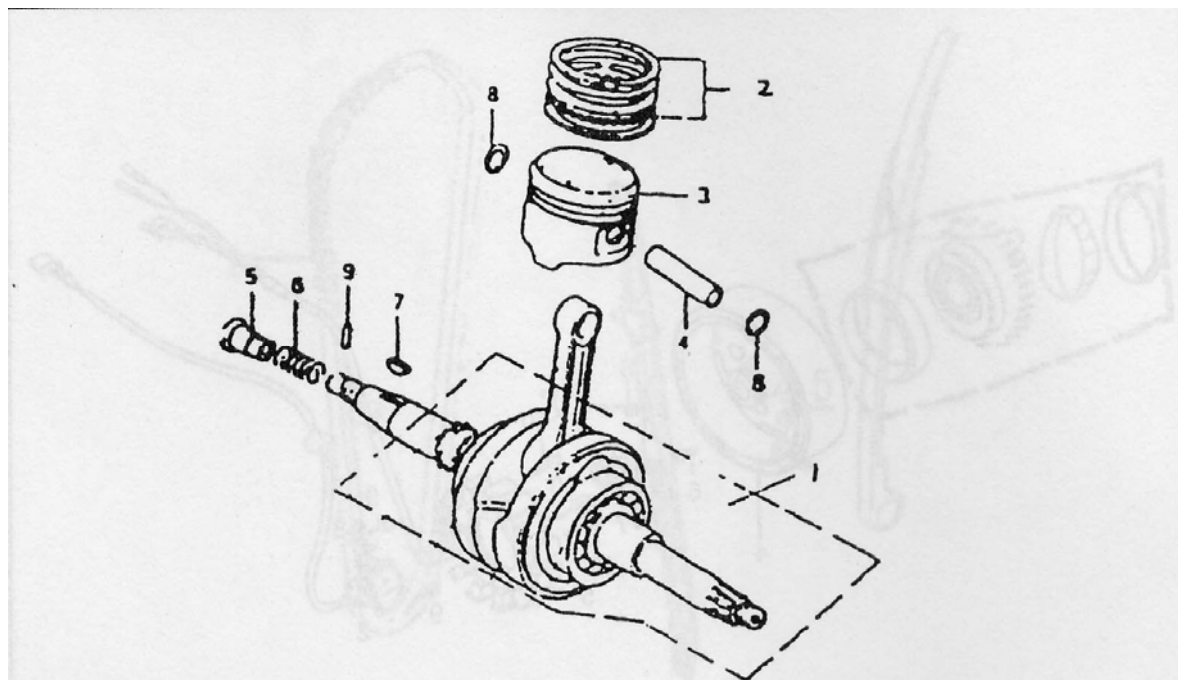
No.	P/N	ENGLISH	Q'ty
1	172MM-022200	Chain, camshaft driver	1
2	172MM-023200	Tensioner set, chain	1
3	172MM-023001	Guide, chain	1
4	GB96-85-6-D.Zn	Washer	1
5	GB/T5781-2000-M6×12-D.Zn	Bolt, M6×12	1
6			
7			
8			
9			
10			
11			
12			
13			
14			

9、crankshaft assy. & piston



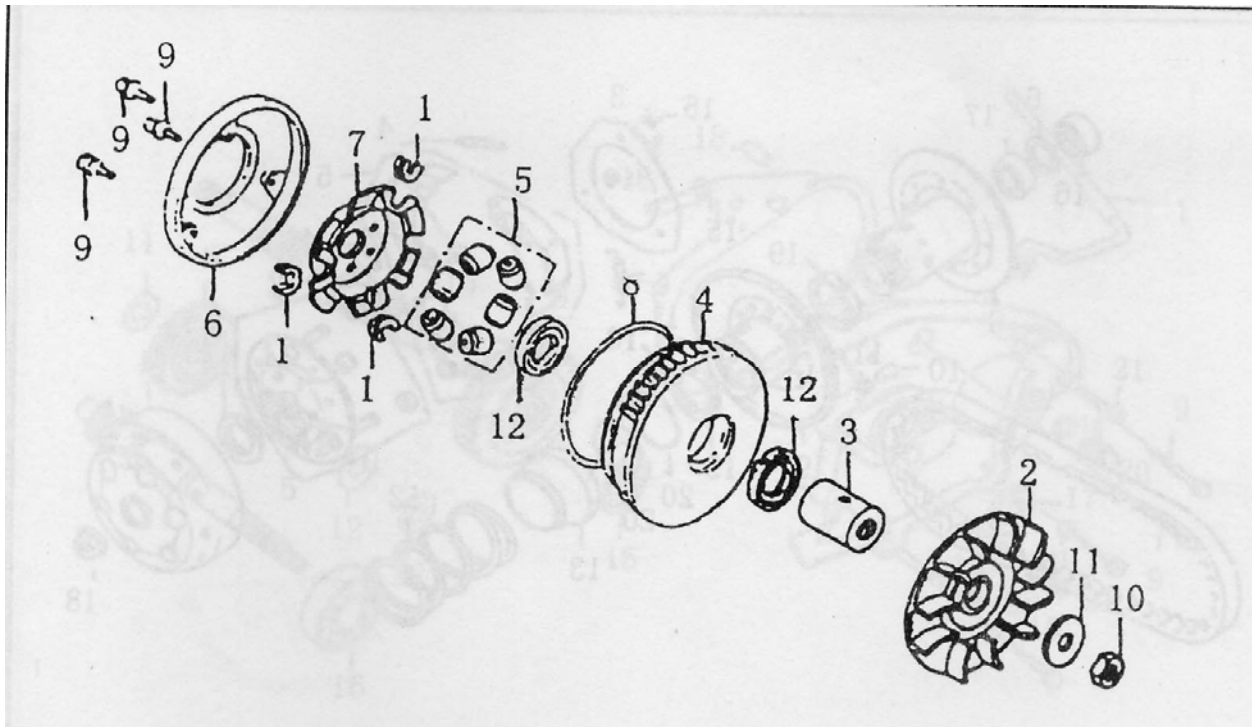
No.	P/N	ENGLISH	Q'ty
1	172MM-094000	Overriding clutch comp.	1
2	172MM-033000	Coil, pick up	1
3	172MM-013008	Holder, wire	1
4	172MM-031000	Rotor comp.	1
5	172MM-032000	Coil assembly, starter	1
6	GB/T70.1-2000-M8×18	Screw, inner hex head	3
7	172MM-040001	Nut, M16×1	1
8	172MM-040002	Washer, 16.3×30×2	1
9	152MI-030002	Bolt, M5×16	2
10	152MI-060012	Bolt, M6×30	3

10、crankcase assy. & piston



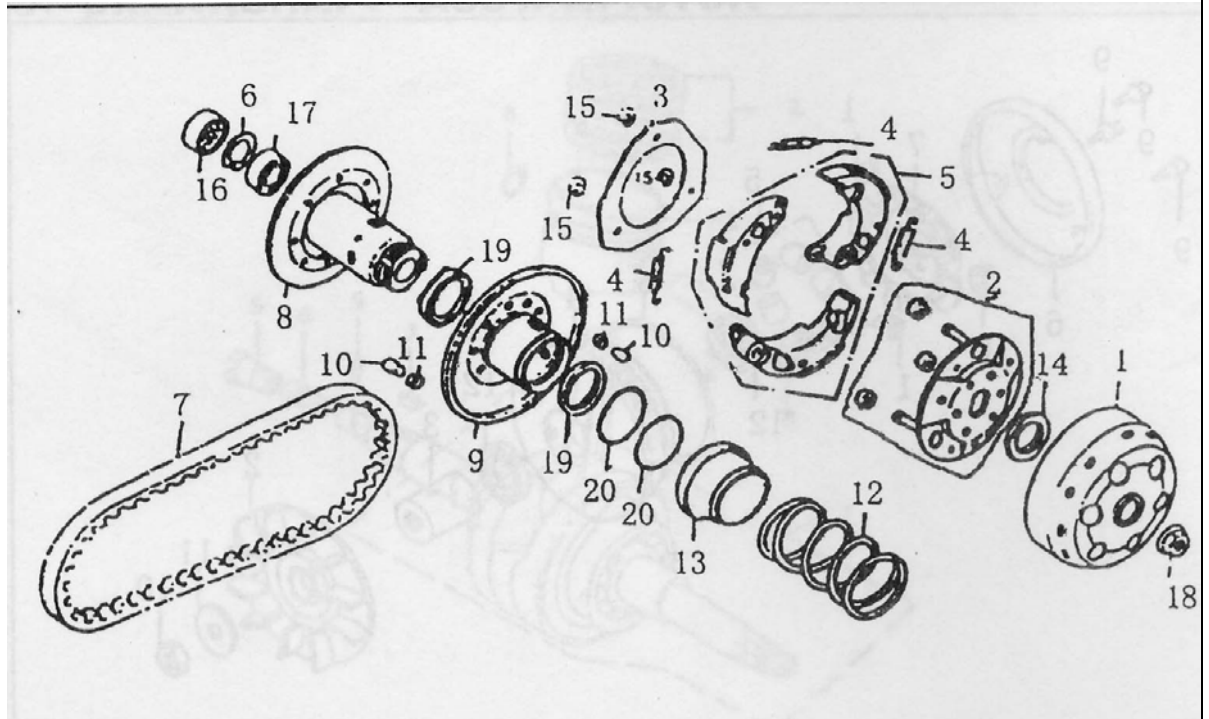
No.	P/N	ENGLISH	Q'ty
1	172MM-041000	Crankshaft comp.	1
	172MM-040008	Piston ring, 1st	1
	172MM-040009	Piston ring, 2nd	1
2	172MM-042000	Oil ring set	1
3	172MM-040005	Piston	1
4	172MM-040007	Pin, piston	1
5	152MI-040011	Joint, oil passage	1
6	152MI-040010	Spring, joint	1
7	152MI-040006	Circular key	1
8	172MI-040006	Cir clip, piston pin	2
9	GB/T119-2000-2×14	Pin 2×11.5	1

11、gearshift assy.



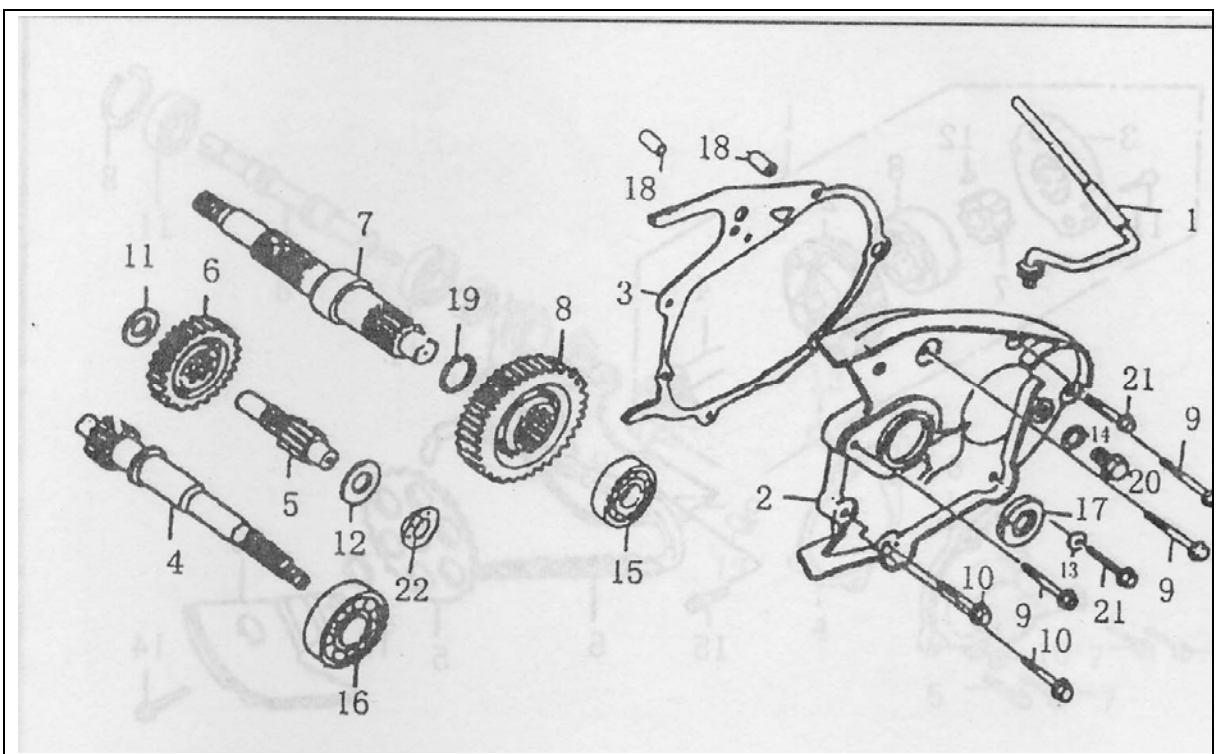
No.	P/N	ENGLISH	Q'ty
1	172MM-051004	Sliding piece	3
2	172MM-051005	Drive face comp.	1
3	172MM-051003	Collar, drive face	1
4	172MM-051100	Movable drive face comp.	1
5	172MM-051200	Weight rotor comp.	6
6	172MM-051001	Cover, drive face	1
7	172MM-051002	Ramp plate	1
8	GB3452.1-82-112×2.65	O-ring 112×2.65	1
9	GB9074.14-88-M4×10	Bolt set	3
10	172MM-051007	Nut, M14×1.5	1
11	172MM-051006	Washer, 14.5×1.5	1
12	152MI-051103	Seal, 27×34×3.5	2

12、clutch assy.



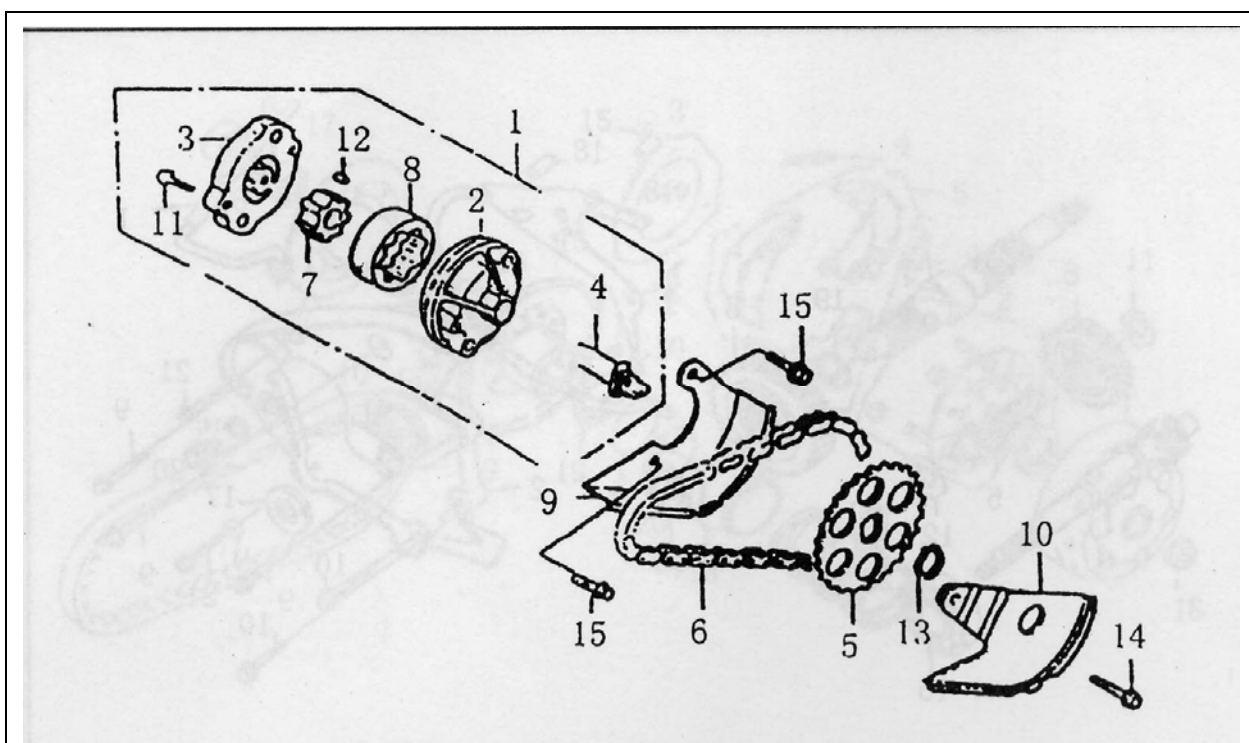
No.	P/N	ENGLISH	Q'ty
1	172MM-052500	Clutch outer comp.	1
2	172MM-052400	Hub, clutch release	1
3	172MM-052003	End plate, clutch	1
4	172MM-052006	Return spring, clutch	3
5	172MM-052600	Weight set, clutch	3
6	GB/T8931-86-28	Circlip	1
8	172MM-052300	Driven face comp.	1
9	172MM-052100	Movable driven face comp.	1
10	172MM-052002	Guide pin	4
11	172MM-052001	Roller, guide	4
12	172MM-052004	Spring, clutch	1
13	172MM-052200	Seal collar	1
14	172MM-052005	Retaining nut, M30×1	1
15	GB/T896-86-6	Cirlip	3
16	GB278-89-1060902	Bearing	1
17	172MM-052310	Bearing, needle 22×29×18	1
18	172MM-052008	Bolt, M12×1.25	1
19	172MM-052104	Seal, movable driven face	2
20	GB3452.1-82-46.2×1.8	O-ring 46.2×1.8	2
7	172MM-052700	Drive belt	1

13、transmission



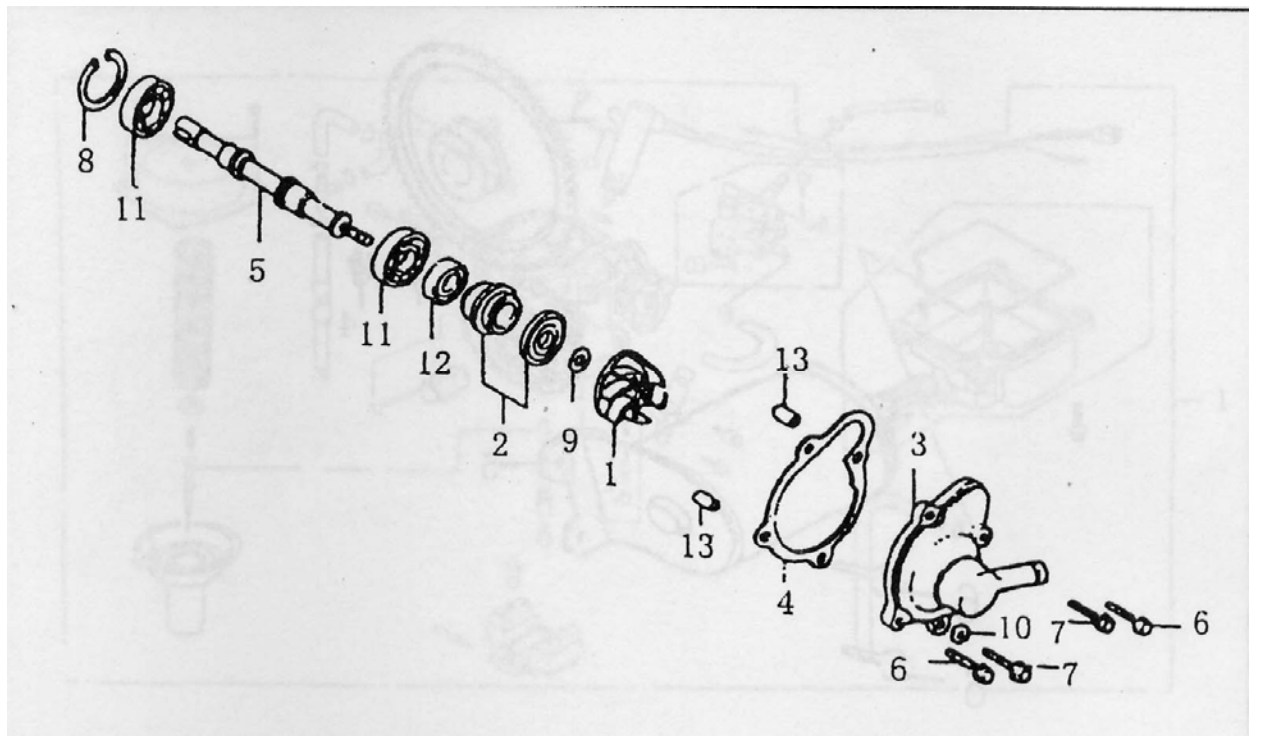
No.	P/N	ENGLISH	Q'ty
1	172MM-062000	Breather hose comp.	1
2	172MM-060009	Cover, gearbox	1
3	172MM-061000	Gasket comp, gearbox cover	1
4	172MM-060001	Drive shaft	1
5	172MM-060003	Counter shaft comp.	1
6	172MM-060006	Gear, counter shaft	1
7	172MM-060007	Final shaft	1
8	172MM-060008	Final gear	1
9	172MM-060010	Bolt, M8×38	3
10	172MM-060011	Bolt, M8×28	2
11	152MI-060003	Thrust washer 14	1
12	172MM-060004	Thrust washer 14	1
13	152MI-060009	Washer 6	1
14	152MI-060010	Washer 10	1
15	NTN: 6304	Bearing	1
16	172MM-060002	Bearing, 22×50×14	1
17	GB9877.1-88-FB22×35×5	seal	1
18	152MI-021005	Dowel pin, $\phi 10 \times 14$	2
19	GB/T894.1-86-24	Circlip	1
20	152MI-060011	Drain plug, M10×1.25	1
21	152MI-080012	Bolt, M6×32	2
22	NTN: HMK1416	Bearing, needle	1

14、oil pipe assy.



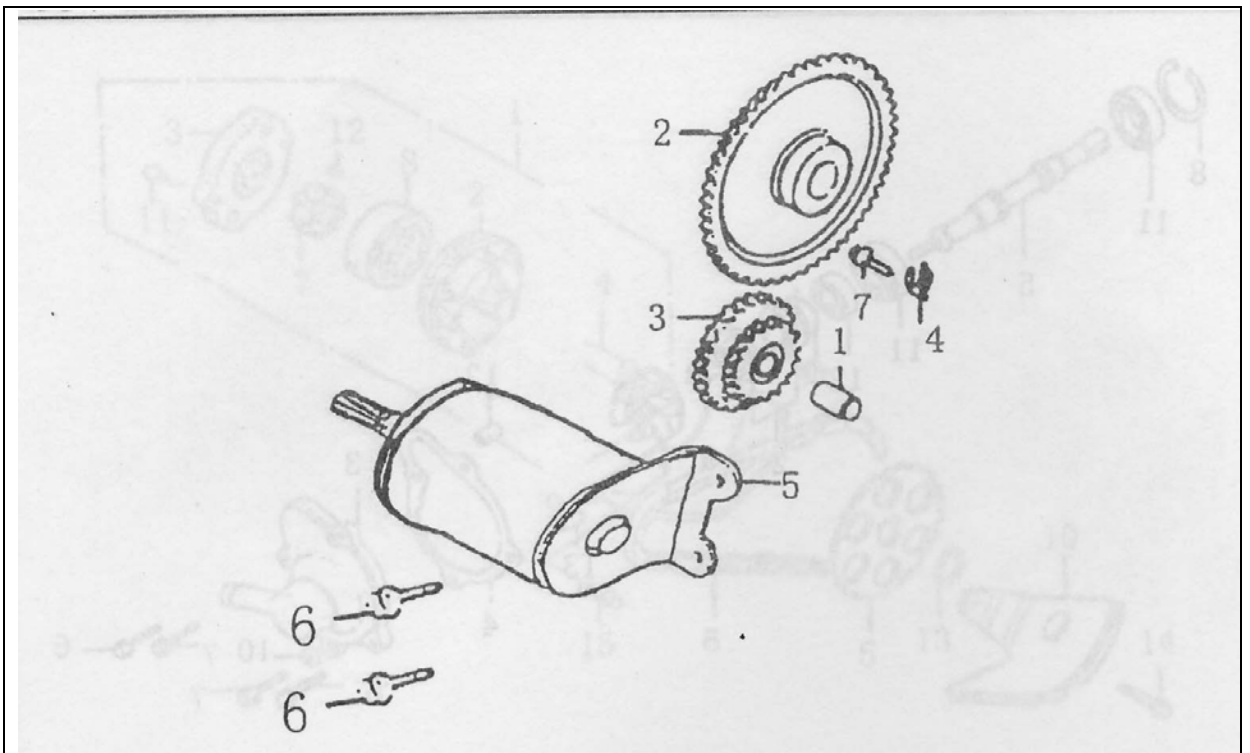
No.	P/N	ENGLISH	Q'ty
1	152MI-071000	Oil pump comp.	1
2	152MI-071002	Oil pump body	1
3	152MI-071003	Cover plate, oil pipe	1
4	152MI-071001	Shaft, oil pipe	1
5	152MI-070001	Sprocket, oil pipe	1
6	152MI-073000	Chain, oil pipe	1
7	152MI-071004	Inner rotor, oil pump	1
8	152MI-071005	Outer rotor, oil pump	1
9	152MI-070002	Separate plate comp. A	1
10	152MI-072000	Separate plate comp. B	1
11	GB878-85-M3×12	Screw	1
12	152MI-071006	Dowel pin 4×6.5	1
13	GB894.1-86-10	Circlip	1
14	152MI-021019	Bolt, M6×12	1
15	152MI-071007	Bolt, M6×28	2

15、water pump assy.



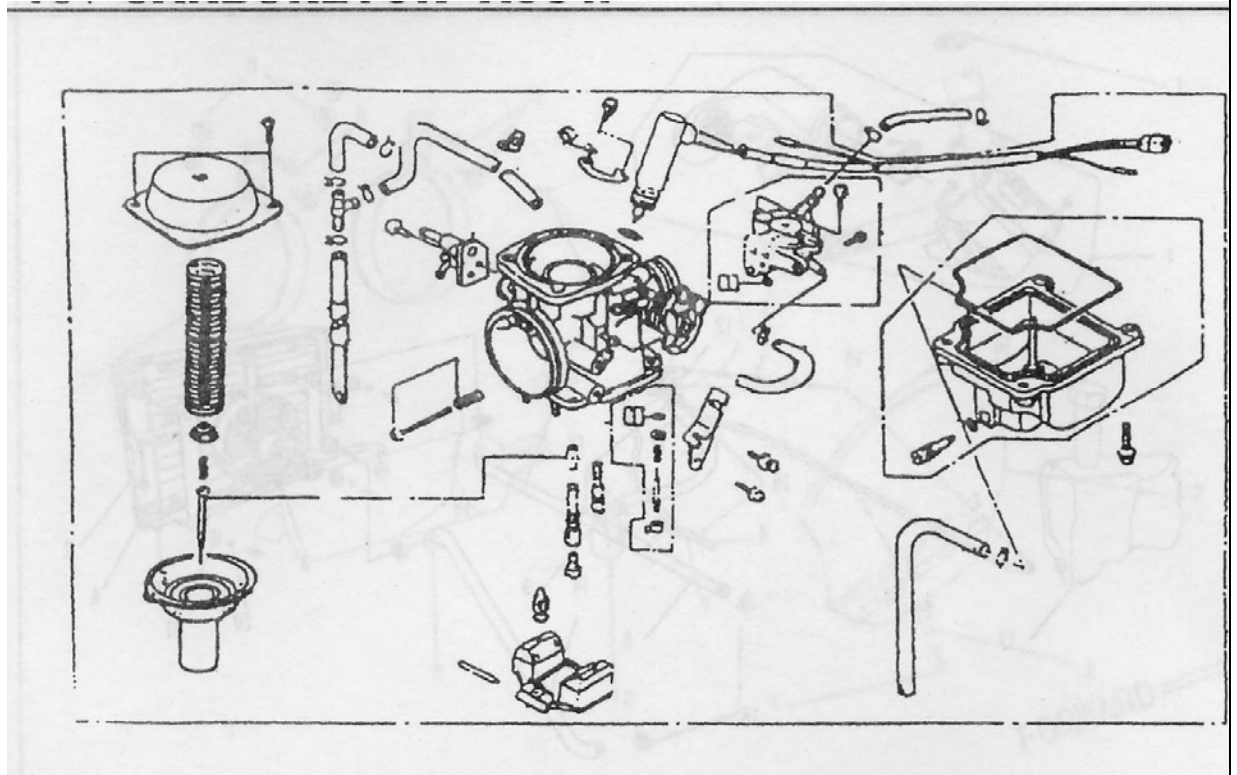
No.	P/N	ENGLISH	Q'ty
1	172MM-080004	Impeller, water pump	1
2	152MI-081000	Water seal comp.	1
3	172MM-080003	Cover, water pump	1
4	172MM-080002	Gasket, water pump cover	1
5	172MM-080001	Shaft, water pump	1
6	152MI-013009	Bolt, M6×40	2
7	152MI-021017	Bolt, M6×25	2
8	GB/T893.1-86-19	Circlip	1
9	152MI-080007	Washer 7.5×13×1.2	1
10	152MI-080011	Washer 6×12×1	1
11	NTN: 6800	Bearing	2
12	172MM-080005	Oil seal 10×20×5	1
13	152MI-080008	Dowel pin $\phi 8 \times 14$	2

16、electrical starting assy.

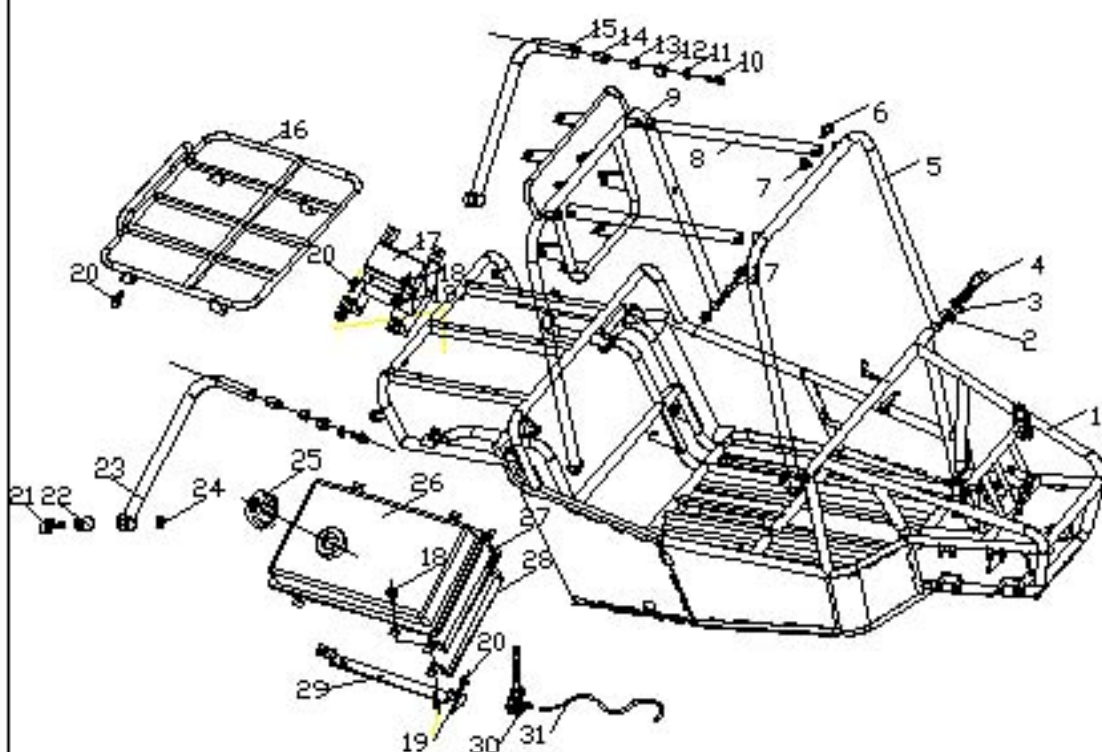


No.	P/N	ENGLISH	Q'ty
1	172MM-090001	Shaft, gear compound	1
2	172MM-092000	Driven gear comp	1
3	172MM-091000	Gear compound	1
4	172MM-090007	Holder	1
5	172M-093000	Starting motor comp.	1
6	152MI-080013	Bolt, M6×22	2
7	172MM-090008	Bolt, M6×14	1

17、carburetor assy.

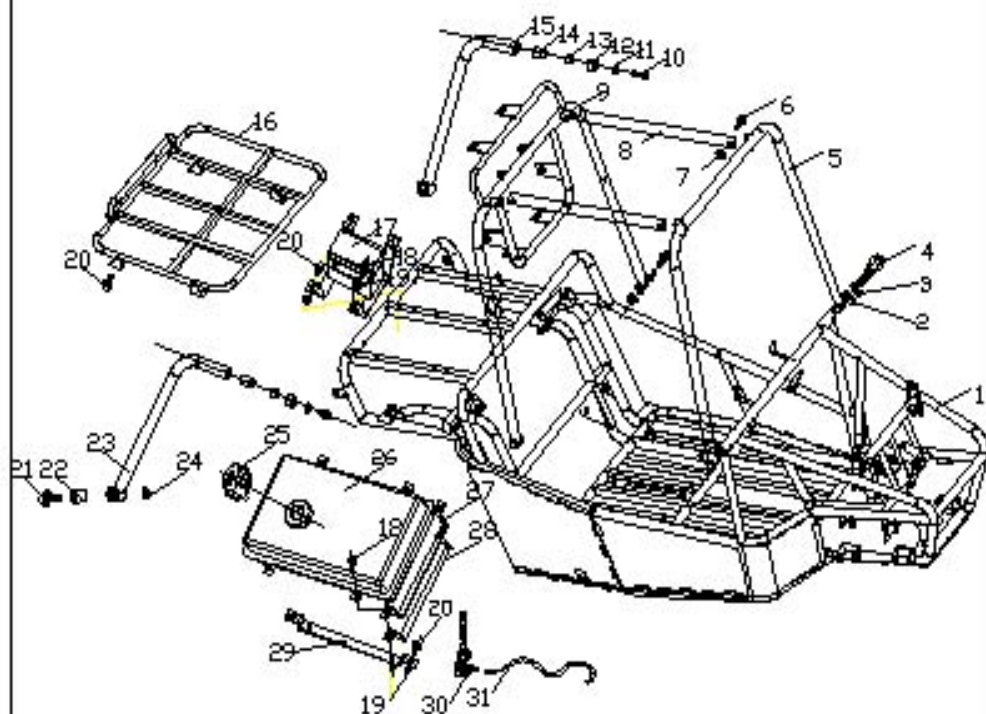
[illegible]

1 FRAME AND FUEL TANK



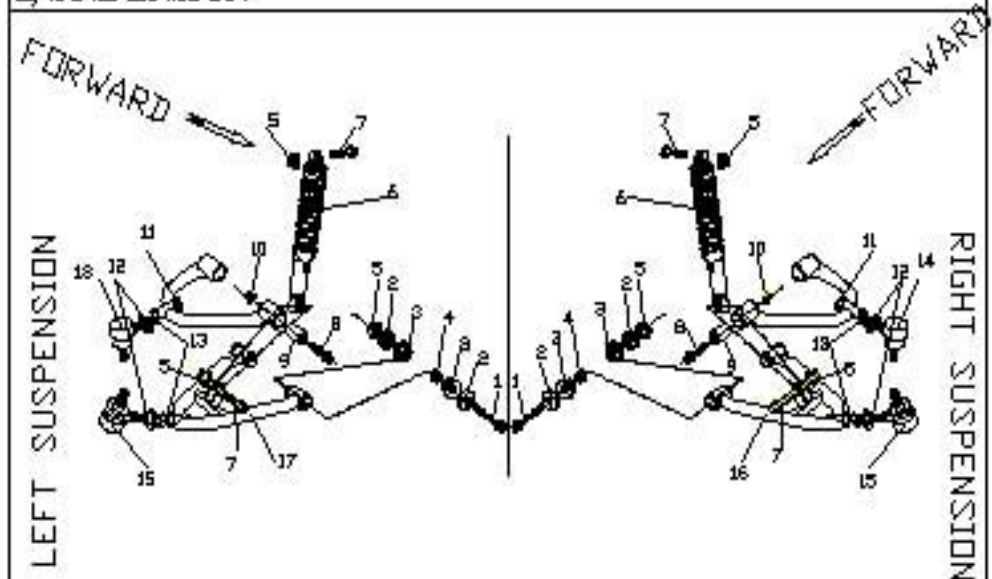
No.	P/N	ENGLISH	Q'ty
1	IS250.01.01.00.00	frame comp	1
2	222.10	washer,flat Ø10	2
3	555.10	washer.lock Ø10	2
4	444.10.30	bolt.hex M10*1.5*30	2
5	IS250.01.02.00.00	protective bar.front	1
6	444.10.45	bolt.flange M10*1.25*45	4
7	333.10	nut.flange M10*1.25	4
8	DS250.01.00.00.01	protective bar.top	2
9	IS250.01.03.00.00	protective bar.rear	1
10	444.10.70	bolt M10*1.5*70	2
11	222.10	washer Ø10	2
12	D250.11.001	round rubber seat	2
13	D250.11.053	round washer	2
14	D250.11.004	tube seat Ø32	2
15	IS250.01.05.00.00	protective bar,caudal right	1
16	IS250.11.01.00.10	rear cargo rack	1
17	DS250.01.01.02.11	battery box	1
18	444.8.30	bolt.flange M8*20	4
19	333.8	nut.lock M8	20

1 FRAME AND FUEL TANK



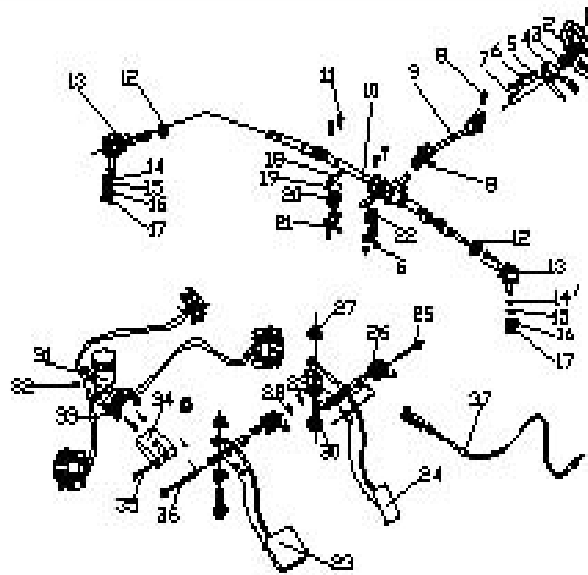
No.	P/N	ENGLISH	Q'ty
20	111.2.16	bolt, flange M8*45	12
21	111.12.60	blot. flange M12*1.5*60	4
22	D250.11.771	nylon protective bar, caudal	4
23	05250.01.04.00.00	left	1
24	555.12	nut, flange M12*1.5	4
25	D250.11.920	cap comp. fuel filler	1
26	05250.11.01.00.17	tank comp. fule	4
27	05250.11.01.00.12	rubber cushion	4
28	05250.11.01.00.07	bracket of tank 1	2
29	05250.11.01.00.08	bracket of tank 2	2
30	5250.11.905	valve assembly, fuel	1
31	0250.11.060	tube comp. fuel	4

2, SUSPENSION



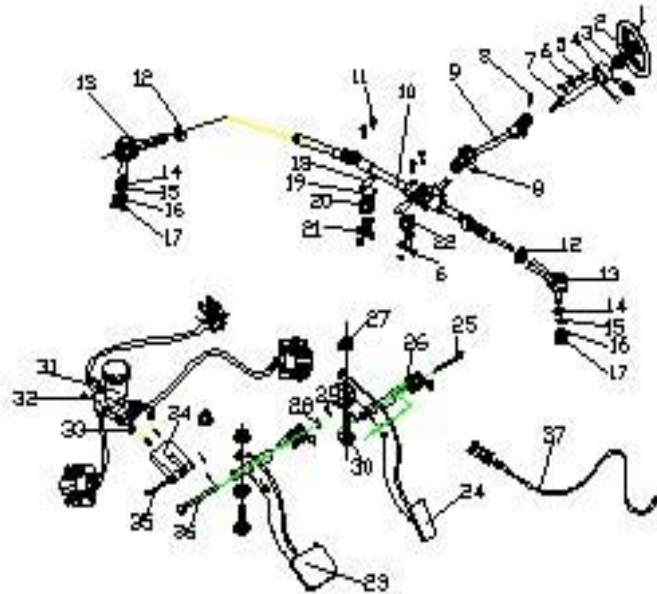
No.	P/N	ENGLISH	Q'ty
1	444.12.85	bolt, flange M12*1.5*85	4
2	JD0268200	seal, lower A-arm	8
3	JD0268001	bearing	8
4	JD0360006	bush, lower A-arm	4
5	333.12	nut, flange M12*1.5	4
6	DS250.02.00.00.02	front shock	2
7	444.12.45	bolt, flange M12*1.5*45	8
8	444.10.60	bolt, flange M10*1.25*60	4
9	JD0110004	snubber, upper arm	4
10	333.10	nut, flange M10*1.25	4
11	DS250.02.02.00.00	upper arm	2
12	333.16	nut M16*1.5	4
13	555.16	washer Ø16	4
14	JD0268300	universal joint, left	2
15	JD0366300	universal joint, left	2
16	DS250.02.04.00.00	lower right arm	1
17	DS250.02.03.00.00	lower left arm	1

3. STEERING ASSY AND BRAKE



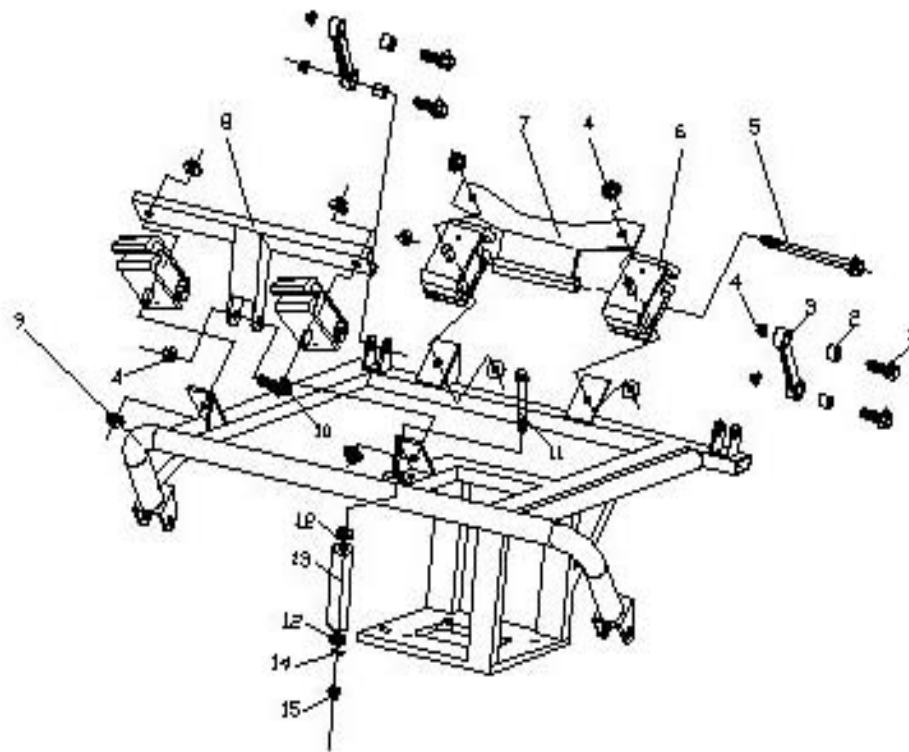
No.	P/N	ENGLISH	Q'ty
1	444.6.20	bolt, flange M6*20	3
2	00250.02.00.00.01	steering wheel	1
3	333.6	nut, lock M6	3
4	00250.10.00.00.01	assorted on-off assembly	1
5	444.10.20	bolt, flange M10*1.25*20	2
6	333.10	nut, flange M10*1.25	6
7	00250.03.01.00.00	steering shaft	1
8	444.8.35	bolt M8*35	2
9	00250.03.02.00.00	steering knuckle	1
10	00250.02.02.00.00	steering gear	1
11	444.10.25	bolt, flange M10*1.25*25	4
12	333.10	nut M12*1.25	2
13	00250.02.00.00.02	rod end	2
14	222.10	washer, flat Ø10	2
15	555.10	washer, lock Ø10	2
16	333.10	nut, castle M10*1.25	2
17	888.2.30	pin, cotter	2
18	0250.03.003	washer	2
19	0250.03.004	washer	1
20	0250.03.006	nylon cover .R	1
21	0250.03.007	bracket, steering gear	2
22	0250.03.008	nylon cover .L	1
23	00250.04.01.00.02	brake pedal comp	1

3. STEERING ASSY AND BRAKE



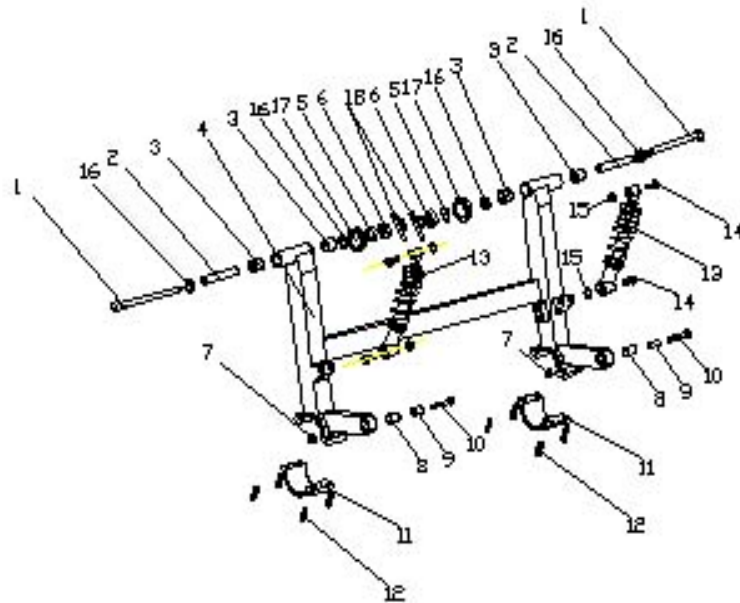
No.	P/N	ENGLISH	Q'ty
24	03260.04.02.00.01	throttle pedal comp	1
25	999.8.75	locating pin 8*75	1
26	03260.04.01.00.01	spring	2
27	333.6	nut, flange M6	4
28	222.8	washer, flat	2
29	888.2.5.30	pin, cotter	3
30	444.6.35	bolt, flange M6*35	3
31	03260.01.01.00.01	master cylinder	1
32	444.8.25	bolt, flange M8*25	2
33	333.8	nut, flange M8	2
34	03260.04.01.00.02	scalar block	1
35	999.6.40	locating pin 6*40	1
36	999.8.105	locating pin 8*105	1
37	03260.04.02.00.02	cable for throttle pedal	1

4. ENGINE RACK



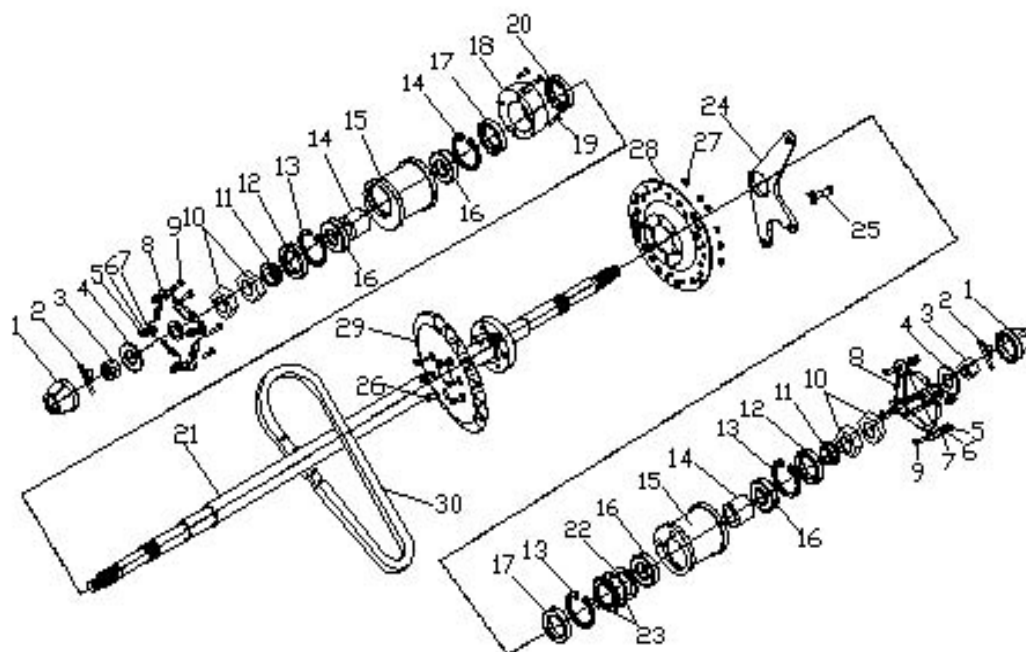
No.	P/N	ENGLISH	Q'ty
1	444.10.45	bolt, flange M10*1.25*45	4
2	D250.04.002	bush, con' rod	4
3	D250.04.001	con'rod	2
4	333.10	nut, flange M10*1.25	13
5	444.10.210	bolt flange M10*1.25*210	1
6	03260.02.00.00.02	cushion blocking	4
7	03260.02.00.00.02	fixed rod, front engine	1
8	03260.02.00.00.04	fixed rod, rear engine	1
9	03260.02.00.00.01	engine rack	1
10	444.10.55	bolt flange M10*1.25*55	1
11	440.14.240	bolt flange M14*1.5*240	1
12	222.14	washer, flat Ø14	2
13	D250.04.004	bush	1
14	555.14	washer, lock Ø14	1
15	330.14	nut, flange lock M14X1.5	1

5, REAR SWING ARM



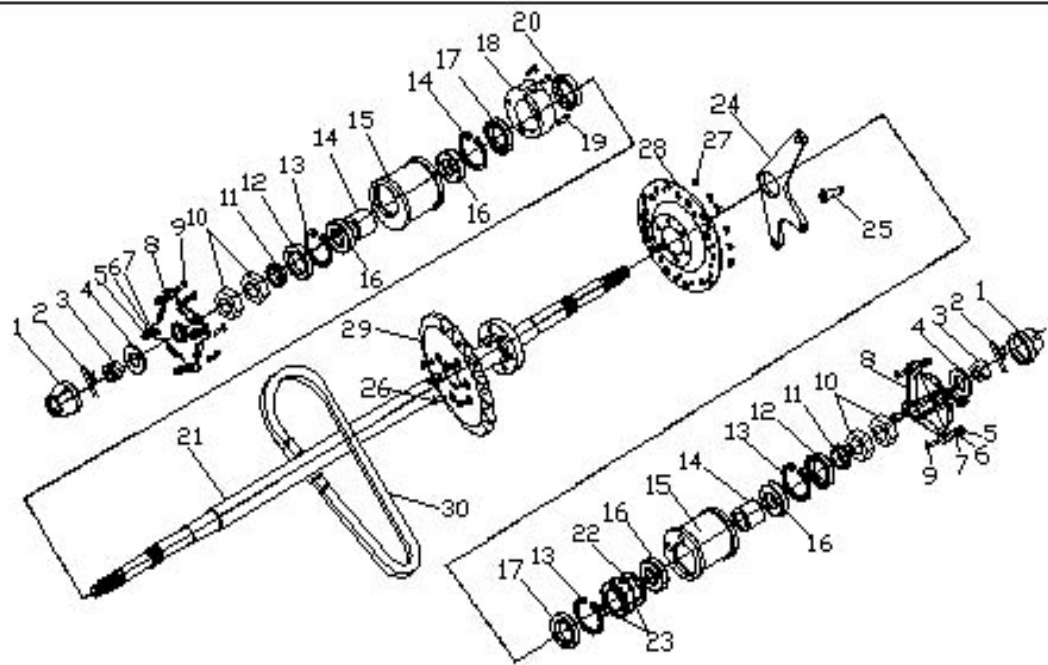
No.	P/N	ENGLISH	Q'ty
1	440.16.185	bolt M16X185	2
2	D250.05.003	spacer.swing arm	2
3	D250.05.004	bush.swing arm	4
4	D250.05.801	rr.swing arm comp.under	1
5	555.16	washer.lock Ø16	2
6	330.16	nut. M16X1.5	2
7	330.12	nut. flange lock M12X1.5	2
8	D250.05.005	bush.swing arm	2
9	D250.05.006	spacer.swing arm	2
10	444.12.65	bolt-washer M12X1.5X65	2
11	D250.05.002	clamp piece.pre judicial	2
12	444.8.30	bolt, flange M8X30	8
13	D250.11.905	cushlon assy.RR	2
14	444.12.65	bolt-washer M12X1.5X60	4
15	330.12	nut. flange lock M12X1.5	4
16	D250.06.00.00.01	adjusting washer Ø23	4
17	222.16	washer, flat Ø16	2
18	888. 2.5 40	cotter pin, shaft, 2.5*40	2

6, RAER HOUSING

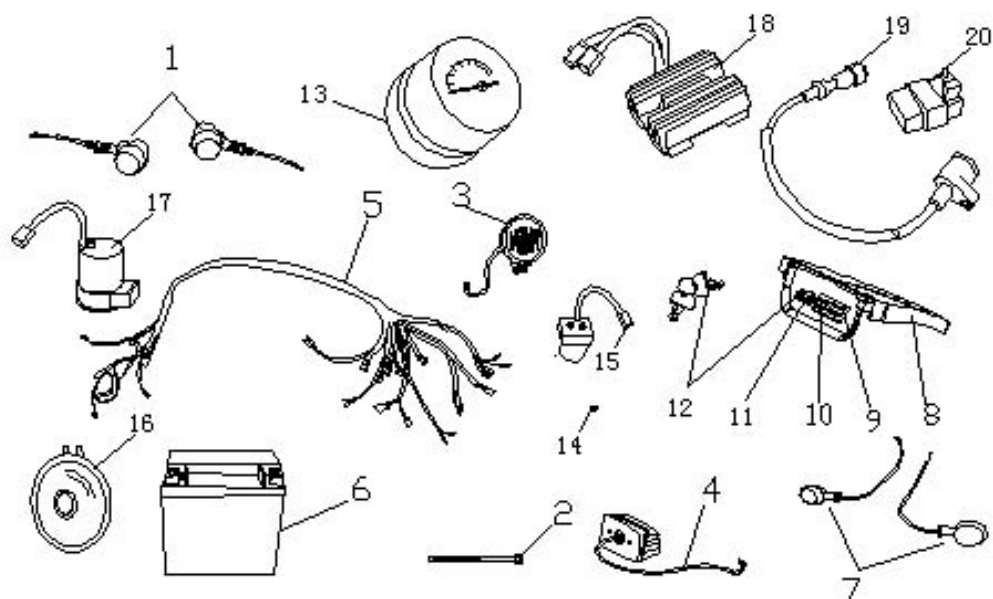


No.	P/N	ENGLISH	Q'ty
1	D250.02.010	hub cover, rear wheel	2
2	888.3.40	cotter pin, shaft, 3*40	2
3	330.16	nut, M16*1.5	2
4	D250.06.011	adjusting washer $\phi 18$	2
5	330.10	nut, wheel, M10*1.25	8
6	555.10	washer lock $\phi 10$	8
7	222.10	washer, flat $\phi 10$	8
8	D250.06.002	hub, rear	2
9	D250.06.014	bolt, M10*1.25*30	8
10	330.30	nut, wheel, M30*1.5	4
11	D250.06.006	spacer	2
12	999.38.62.8	seal, axle carrier	2
13	770.62	circlip $\phi 62$	4
14	D250.06.007	compart spacer	2
15	D250.06.004	eccentricity tray	2
16	666.206	bearing	4
17	999.45.65.8	seal, axle carrier	2
18	D250.06.010	sensor spacer	1
19	444.6.15	bolt, M6*15	3
20	999.45.65.8	seal, axle carrier	1
21	D250.06.801	after shaft	1
22	D250.06.005	compart spacer	1
23	777.45	circlip $\phi 45$	2

6, RAER HOUSING

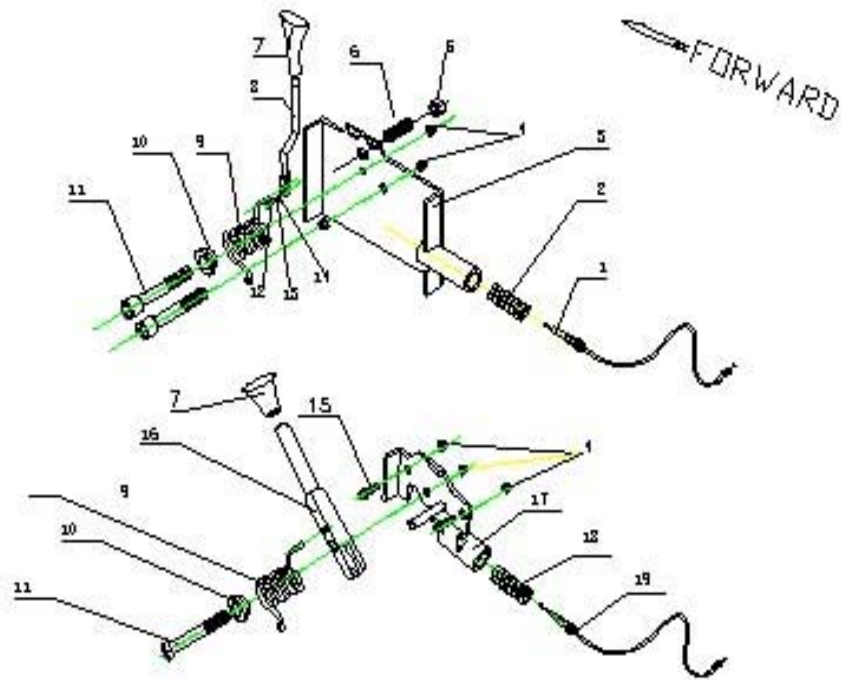
[illegible]

7, ELECTRICAL ASSEMBLY



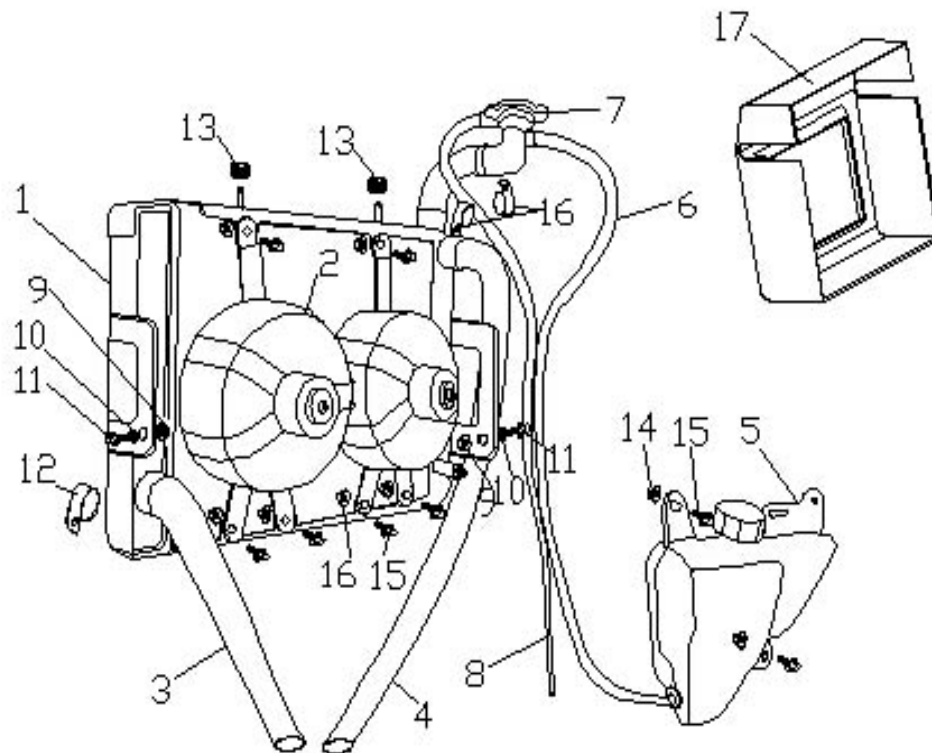
No.	P/N	ENGLISH	Q'ty
1	D250. 07. 900	turning singal,front	2
2	N6. 200	nylon, clamp, 6*200	8
3	D250. 07. 901	headllght (35/25w)	2
4	D250. 07. 903	taillamp	2
5	D250. 07. 801	harness, wiring	1
6	D250. 07. 802	battery (12v, 9Ah)	1
7	D250. 07. 904	turning singal,rear	2
8	DS250. 10. 00. 00. 02	panel	1
9	D250. 07. 911	function display 2	1
10	D250. 07. 906	function display 1	1
11	DS250. 10. 00. 00. 05	horn botton	1
12	D250. 07. 909	ignlton switch	1
13	D250. 07. 907	speedometer	1
14	D250. 07. 905	level switch	1
15	D250. 07. 912	relay,start	1
16	D250. 07. 913	horn	1
17	D250. 07. 914	flasher	1
18	D250. 07. 915	rectifier, regulator	1
19	D250. 10. 916	coil, IGN	1
20	D250. 10. 917	C.D.I	1

8 SHFIT LEVER AND PARKING LEVER ASS'Y



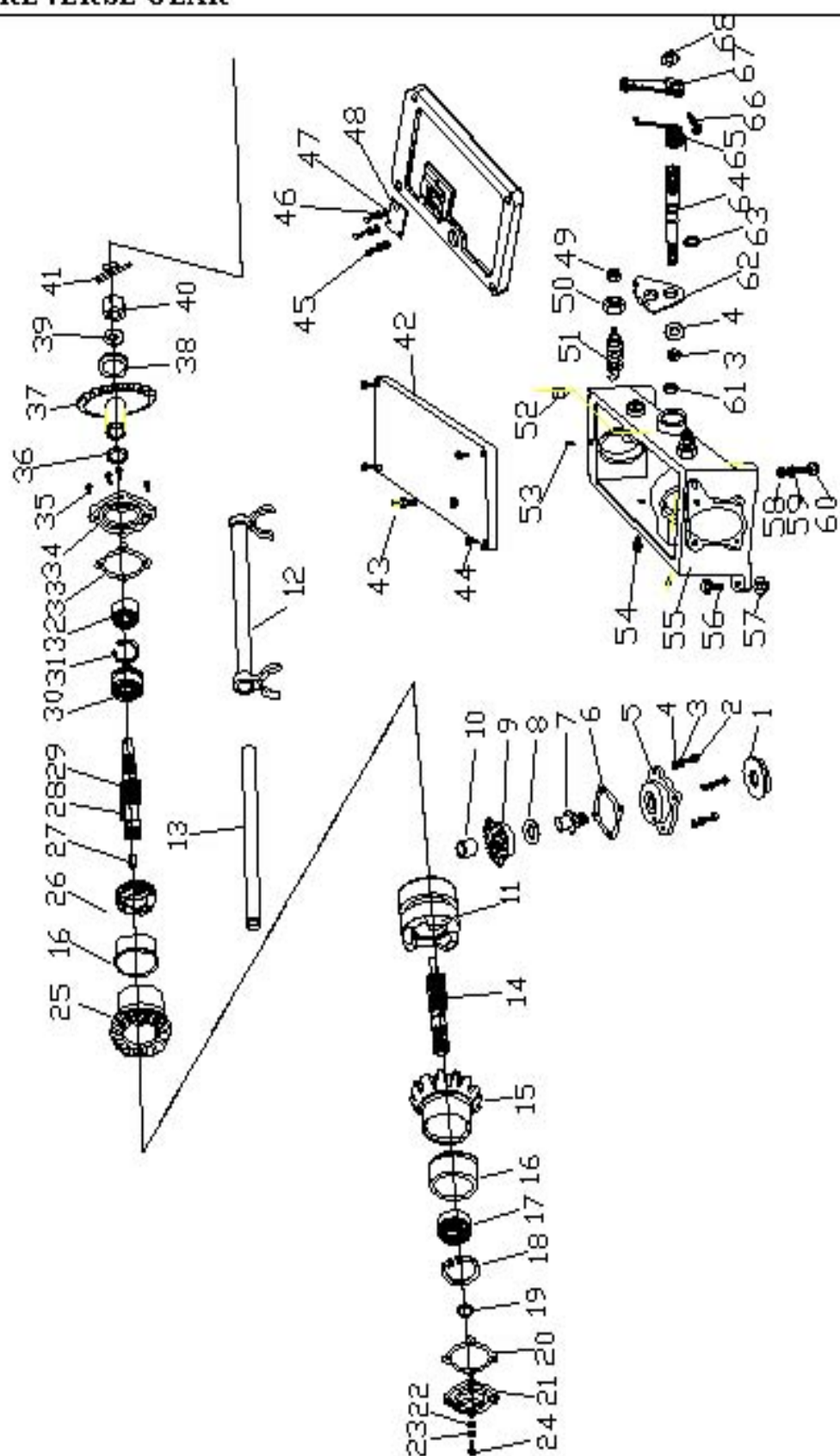
No.	P/N	ENGLISH	Q'ty
1	DS250.07.00.00.01	cable for reverse	1
2	DS250.07.00.00.02	spring	1
3	DS250.01.01.02.09	seat for reverse lever	1
4	333.8	nut, flange M8	6
5	333.12	nut, M12*1.5	1
6	DS50.08.090	sensor	1
7	JD1082101	handgrip	1
8	DS250.07.00.00.03	lever, reverse gear	1
9	REV-35	spring	1
10	REV-36	sliding	1
11	444.8.55	nut, hex M8*55	2
12	444.4.16	bolt, M6*16	1
13	555.4	washer, lock 4	1
14	222.4	washer, flat $\phi 4$	1
15	444.8.20	bolt, flange M8*20	2
16	REV-33	spring	1
17	REV-32	seat for parking lever	1
18	REV-33	spring	1
19	DS250.04.01.00.05	cable, parking brake	1

9, RADIATOR ASSY



No.	P/N	ENGLISH	Q'ty
1	D250.09.901	water tank	1
2	D250.09.902	Farmer	2
3	D250.09.001	water pipe for enter	1
4	D250.09.002	water pipe for out	1
5	D250.09.903	standby water tank	1
6	D250.09.004	water pipe for tank	1
7	D250.09.904	cover for add water	1
8	D250.09.008	cooling pipe	1
9	333.10	nut, M10	2
10	222.10	washer, flat ϕ 10	2
11	444.10	bolt, M10*25	2
12	3130008	mounting, exhaust pipe	6
13	JD1910003	rubber	2
14	333.6	nut, M6	8
15	444.6.15	bolt, M6*15	8
16	D250.11.030	Hoop, water tube	8
17	D250.11.070	radiator cover	1

10, REVERSE GEAR

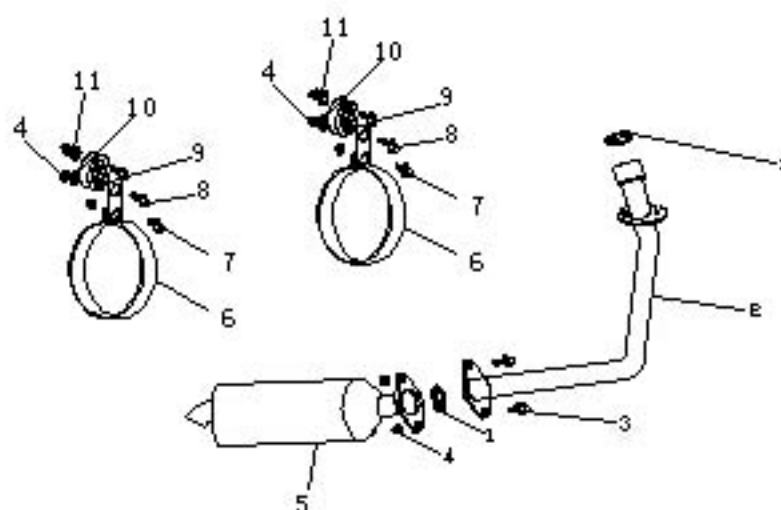


10, REVERSE GEAR

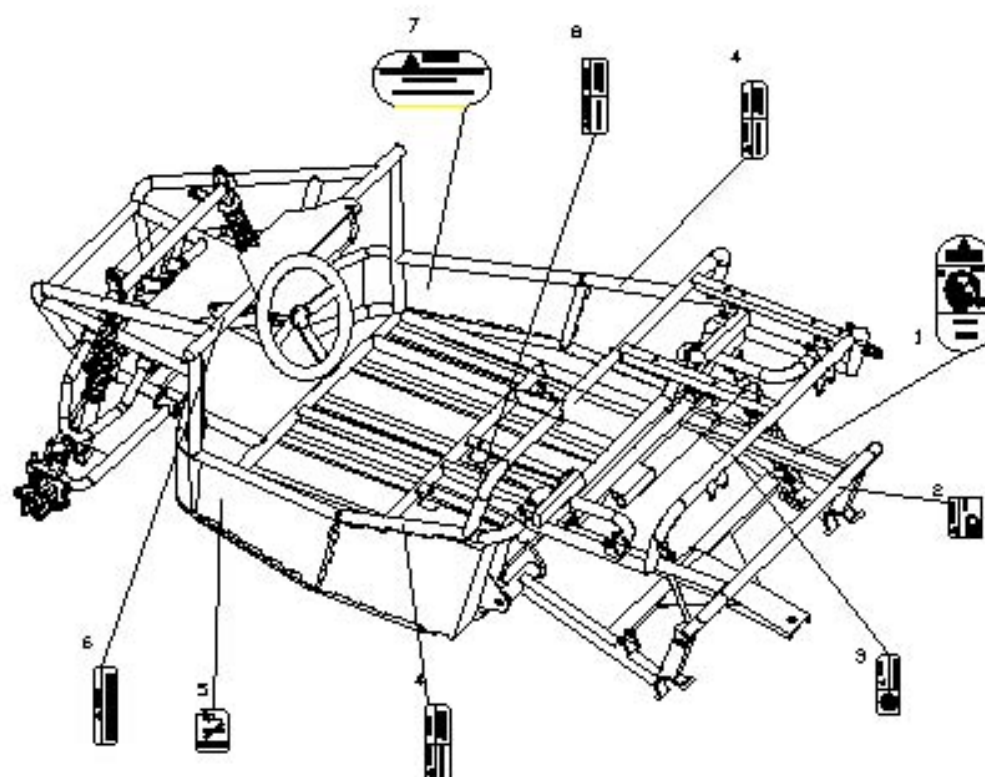
No.	P/N	ENGLISH	Q'ty
1	D250.07.01.00.03	nut, M24	1
2	444. 2. 20	bolt, M8*20	4
3	555. 8	washer lock 8	5
4	222. 8	washer ϕ 8	5
5	D250.07.01.00.01	shaft seat	1
6	D250.07.01.00.02	gasket head cover	1
7	D250.07.01.00.04	small shaft	1
8	D250.07.01.00.06	washer	1
9	D250.07.01.00.07	prick gear	1
10	D250.07.01.00.05	compart spacer	1
11	D250.07.01.00.12	Joint spacer	1
12	D250.07.01.02.00	poker	1
13	D250.07.01.00.16	shaft	1
14	D250.07.01.00.10	shaft for enter	1
15	D250.07.01.00.11	prick gear	1
16	D250.07.01.01.02	compart spacer	1
17	666. 204	bearing	1
18	770. 47	circlip 47	1
19	777. 20	circlip 20	1
20	D250.07.01.00.09	gasket for enter	1
21	D250.07.01.00.08	shaft seat for enter	1
22	222. 6	washer, flat ϕ 6	4
23	555. 8	washer, lock 6	4
24	444. 6. 20	bolt M6*20	4
25	D250.07.01.00.19	prick gear	1
26	D250.07.01.00.20	joint spacer	1
27	D250.07.01.00.18	compart spacer	1
28	999. 3. 16	roll pin	24
29	D250.07.01.00.21	shaft for out	1
30	666. 204	bearing	1
31	770. 47	circlip 47	1
32	999. 28. 47. 8. 0	seal, axle carrier	1
33	D250.07.01.00.23	gasket for out	1
34	D250.07.01.00.22	shaft seat for out	1
35	444. 6. 12	screw, philips head	4
36	D250.08. 802	washer	3
37	D250.08. 006	chain wheel for out	1
38	222. 16	washer, flat ϕ 16	1
39	555. 16	washer, lock 16	1
40	333. 16	nut, castle	1

10, REVERSE GEAR			
No.	P/N	ENGLISH	Q' ty
41	888. 3. 40	cotter pin , shaft, 3*40	1
42	DS250. 07. 01. 00. 13	box cover	1
43	000. 8	blowhole M8	1
44	444. 6. 20	bolt, flange M6*20	4
45	444. 4. 8	bolt M4*8	3
46	222. 4	washer, flat Ø4	3
47	555. 4	washer, lock 4	3
48	DS250. 07. 01. 00. 15	cover	1
49	333. 5	nut, M5	2
50	333. 12	nut, M12	2
51	DS250. 07. 01. 04. 00	sensor	2
52	DS250. 07. 01. 03. 00	pin	1
53	444. 6. 8	screw M6*8	2
54	444. 6. 16	bolt, flange M6*16	1
55	DS250. 07. 01. 01. 01	reverse gear box	1
56	444. 8. 45	bolt, flange M8*45	2
57	333. 8	nut, lock M8	2
58	555. 10	washer, flat Ø10	2
59	333. 10	nut, lock 10	2
60	444. 10. 25	bolt, flange M10*1. 25*25	2
61	333. 8	nut M8	1
62	DS250. 04. 01. 00. 17	sector board	1
63	000. 9	O ring Ø9*1.8	2
64	DS250. 07. 01. 00. 20	sector board shaft	1
65	DS250. 07. 01. 00. 25	spring	1
66	444. 6. 35	bolt, flange M6*35	1
67	DS250. 07. 01. 00. 24		1
68	333. 6	nut, lock M6	1

11, EXHAUST

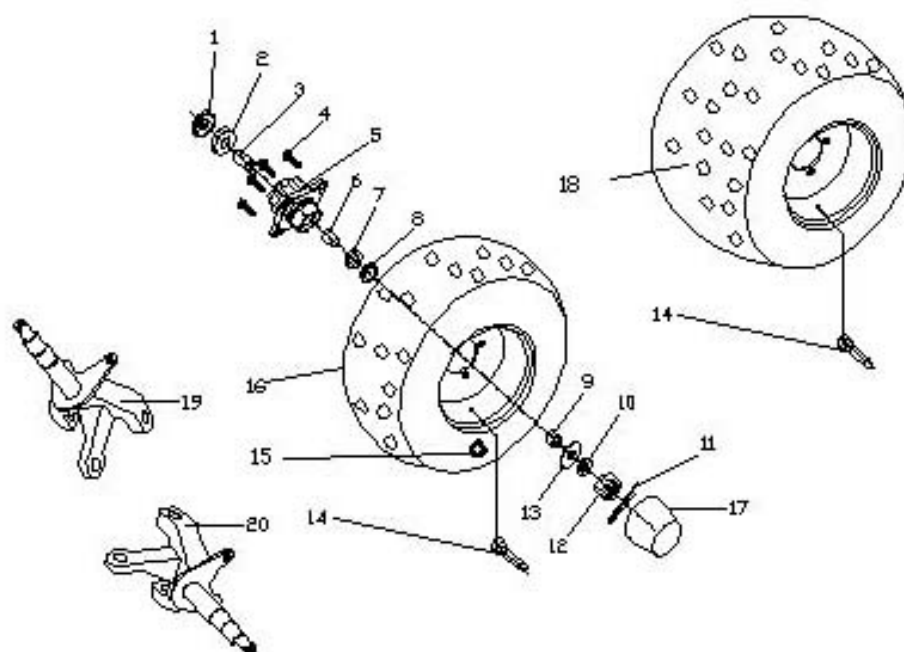
[illegible]

12 LABEL



No.	P/N	ENGLISH	Q' ty
1	D250.12.008	long-hair warning	1
2	D250.02.004	china warning	1
3	D250.12.005	luggage carrier	1
4	D250.12.003	warning	1
5	D250.12.002	safety belt warning	2
6	D250.12.006	colligate warning	1
7	D250.12.007	shift reverse gear	1
8	D250.12.008	warning	1
		hand indication	1

15. FRONT, REAR WHEEL



No.	P/N	ENGLISH	Q' ty
1	999. 28. 47. 7	seal, FB 28*47*7	2
2	666. 204	bearing, Inner 204	2
3	D250.02.006	spacer.FR.hub,inter	2
4	D250.11.062	bolt,tire M10X1.25X25	8
5	D250.02.004	hub, FR.wheel	2
6	D250.02.005	spacer.FR.hub	2
7	666. 203	bearing, outer 203	2
8	999. 25. 40. 7	seal, FB 25*40*7	2
9	D250.02.007	spacer.FR.hub,outer	2
10	555. 16	lock washer, front axle 16	2
11	888. 4. 40	cotter pin 4*40	2
12	330. 16	nut, front axle M16*1.5	2
13	222. 16	washer, front axle 16	2
14	D250.11.773	valve assy	4
15	330. 10	nut, front wheel M10*1.25	8
16	JD0760000	tire, AT22*8-10 L/R	2
17	D250.02.010	hub cover, front wheel	2
18	D250.11.901	tire, AT22*10-10	2
19	16250.02.00.00.03	shaft, front wheel R	1
18	16250.02.00.00.02	shaft, front wheel L	1