

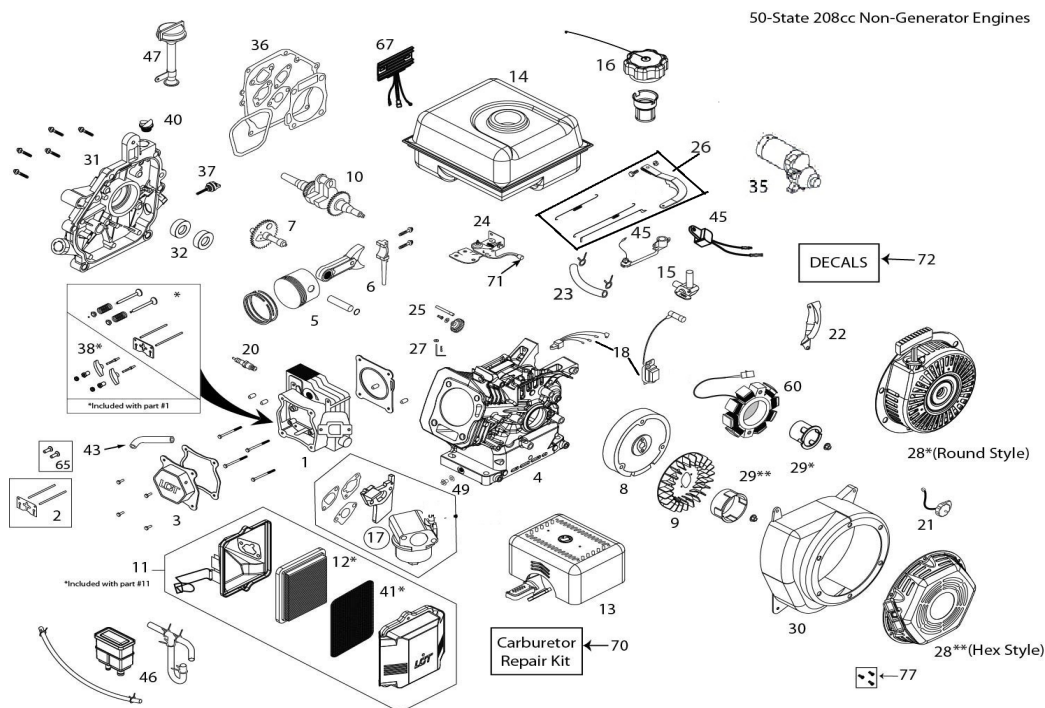


## 2017 MUDHEAD

10th letter in VIN: H



## Illustrated Parts Manual

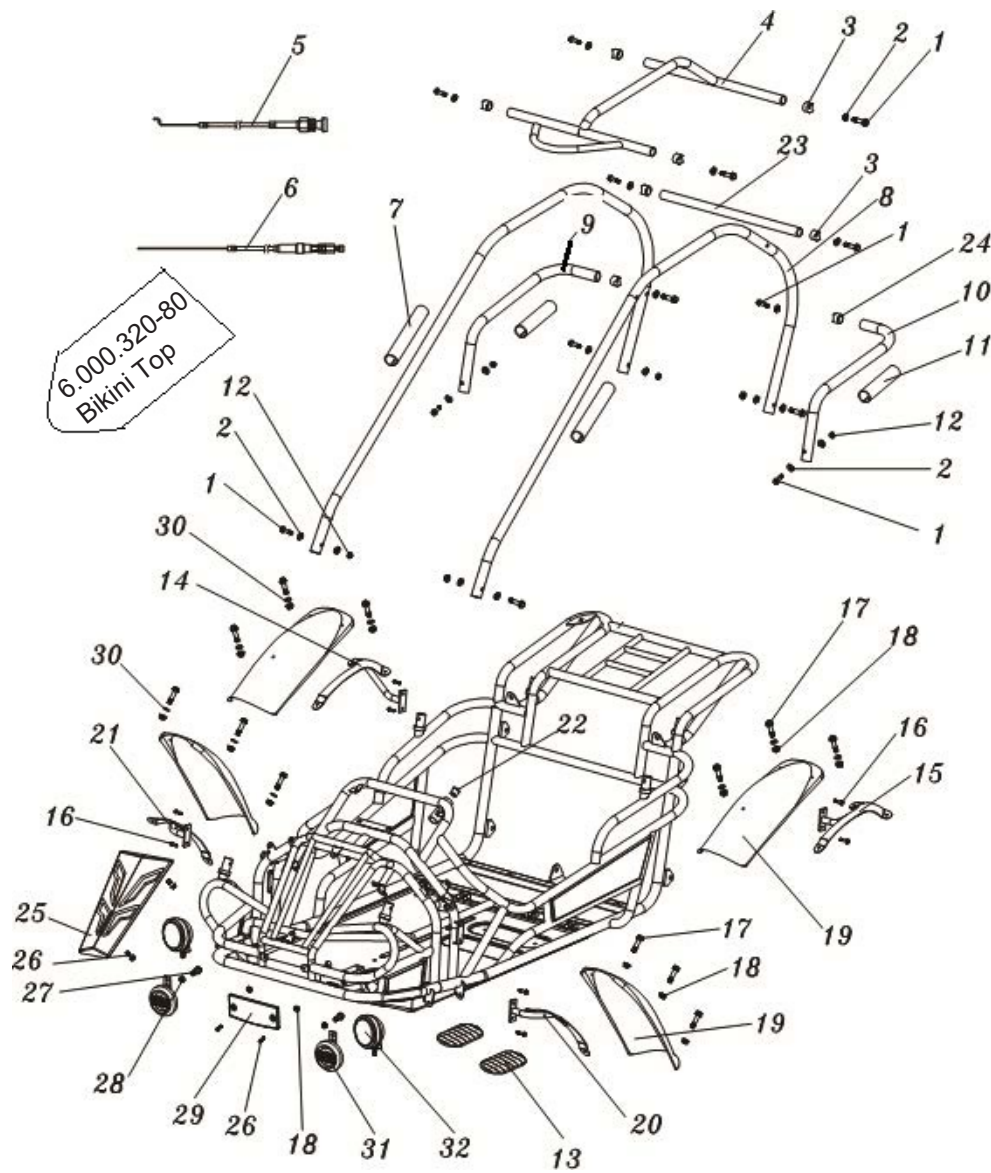


**PLMHK14650124EBCJKPQTUVX235E1M**

Ref#	CPC #	Description
1	20810001	Cylinder Head Assembly
2	20810011	Push Rod Kit (208cc)(incl. valve cover gskt)
3	20845011	Valve Cover (208cc)
4	20813061	Cylinder (Gen II- No Low Oil Sensor)(208cc)
5	20814001	Piston Assembly
6	20815001	Connecting Rod Assembly
7	20816001	Camshaft System Assembly
8	20804151	Flywheel Electric Start (60-Watt) (208cc)
9	20840001	Cooling Fan- Flywheel
10	20818001	Crankshaft Assembly-Keyed
11	20820021	Air Filter Assembly Of Paper
12	20820121	Pleated Paper Air Filter (Ref #41 incl.)
13	20821001	Muffler Assembly
14	20822191	Fuel Tank (2.7L)(Black- W/Reg Mtg-Stant Cap)
15	20822211	1/4 Fuel Petcock (Non-Generator)
16	20883001	Plastic Tall 1/2 Turn Fuel Cap
17	20824051	Carburetor - incl spacer-choke-gaskets
18	20825701	Ignition Coil (Integrated CDI 208cc)(Summer W/Metal Shield)
20	20838101	Spark Plug
21	20826001	On/Off Switch
22	20824051	Carburetor (L03-1)(Remote Choke 208cc)
23	20860001	Fuel Hose Kit
24	20828201	Throttle Control (Remote w/Spring)
25	20829001	Governor Gear Assembly
26	20830001	Governor Link Assembly with governor springs (summer) (20830021)
27	20831001	Governor Arm Shaft Assembly

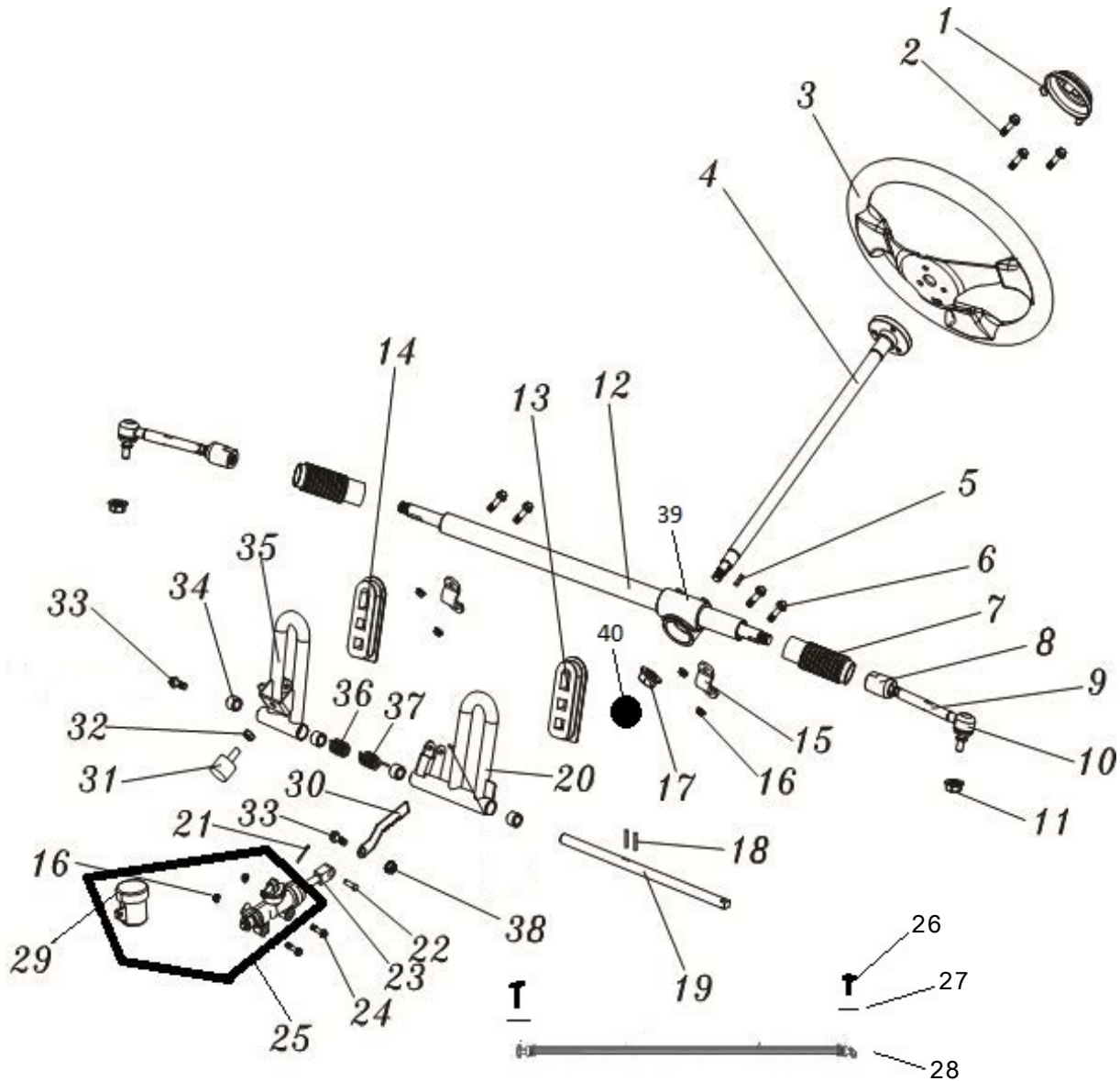
28	20832002	Recoil Starter Assy(Round-Black)
29	20833002	Starter Cup (Non-Slotted)
30	20834201	Blower Housing (Black)(Es Wo/Switch Hole- W/Finger Guard)
31	20836001	Crankcase Cover Assy-High Oil-Fill Tube (Threaded)
32	20839001	Oil Seal Kit (2 Pcs)
34		
35	20880501	12V Electric Starter (208cc) with Starter Relay
36	20843001	Gasket Kit
37	20837111	Small Black Dipstick
38	20811001	Rocker Arm Assembly
39	NA	
40	20837051	Non-Removable Plug
43	20845101	Breather Tube (136/208cc)
46	20890041	Carbon Canister Kit
49	20899111	Oil Drain Plug Kit
60	20804141	60-Watt Charging Coil
65	20810051	Tappet Kit (order gasket seperately)
67	20880001	Regulator/Rectifier (Use W/60-Watt Alt)(208cc)
68	20821301	Remote Choke Bracket (208cc)
70	99001	Carburetor Repair Kit (136/208/254cc)
72	20850001	Maxx Series Decal Kit
77	99991	Recoil Bolt Kit
Service Engine: Stock		

# FRAME COMPONENTS



REF#	PART NUMBER	DESCRIPTION	COUNT	REF#	PART NUMBER	DESCRIPTION	COUNT
1	9.108.050	BOLT M8X1.25X50	14	17	9.106.014	BOLT M6X14 STAINLESS	12
2	7.010.049	METAL R-WASHER	20	18	9.220.006	LOCK NUT M6	12
3	7.010.017	TUBE SEAT 25	6	19	7.010.034-SS	FENDER	4
4	6.160.300-BK	CROSS BAR TOP (-BLACK)	1	20	20-0625-00L	FENDER BRACKET (FL)	1
5	20-0705-00	CHOKE CABLE	1	21	20-0625-00R	FENDER BRACKET (FR)	1
6	20-0704-00	THROTTLE CABLE	1	22	7.010.006	STEERING SHAFT BUSHING	1
7	7.020.111	FOAM PADDING	2	23	8.080.078-BK	CROSS BAR REAR (-BLACK)	1
8	8.170.054-BK	LONG BAR (-BLACK)	2	24	7.110.016	TUBE SEAT 28	2
9	8.170.056-BK	Right Side Bar (-BLACK)	1	25	9.131.192	DECORATING PLATE TOP	1
10	8.170.055-BK	LEFT SIDE BAR (-BLACK)	1	26	9.106.020	BOLT M6X20	4
11	6.000.189	FOAM PADDING SHORT	2	27	9.106.012	FLANGE BOLT M6X12	2
12	9.220.008	LOCK NUT, M8	6	28	9.220.006	NUT M6	2
13	7.020.012	RUBBER FOOT PLATE	2	29	8.147.162	DECORATING PLAGE BOTTOM	1
14	20-0601-00R	FENDER BRACKET (RR)	1	30	9.300.006	M6 FLAT WASHER	12
15	20-0601-00L	FENDER BRACKET (RL)	1	31	6.000.174	HORN	2
16	9.106.016	BOLT M6X16	8	32	20-0206-00	MUDHEAD HEADLIGHT	2

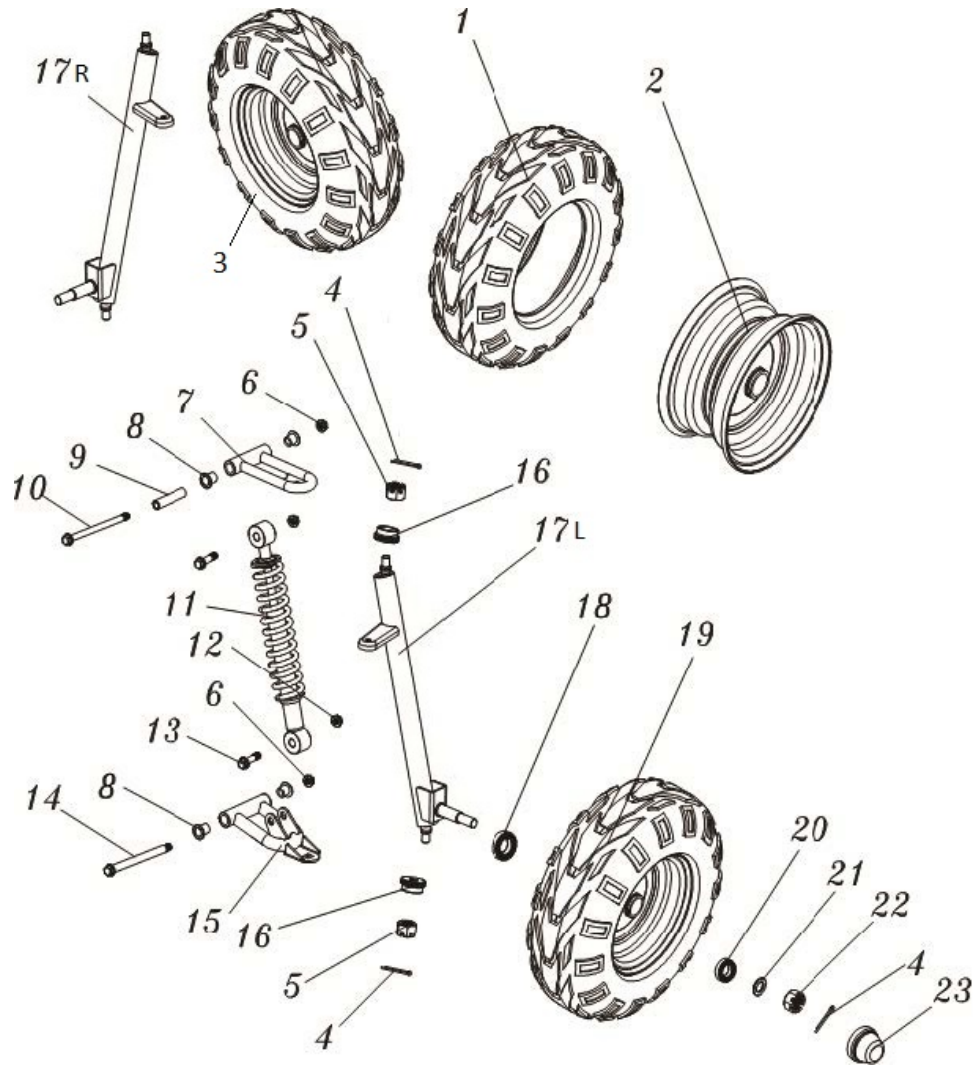
# STEERING ASSEMBLY



REF #	PART NUMBER	DESCRIPTION	COUNT	REF #	PART NUMBER	DESCRIPTION	COUNT
1	7.010.056	STEERING WHEEL COVER	1	20	4.000.044-T	BRAKE PEDAL COMP.	1
2	9.106.016	FLANGE BOLT M6X16	4	21	9.500.218	COTTER PIN	1
3	7.020.057	STEERING WHEEL	1	22	6.000.308	LOCKING ROLL PIN	1
4	2.000.056	STEERING SHAFT	1	23	6.000.306	SHAFT, BRAKE MASTER CYLINDER	1
5	8.010.203	KEY, 4X4X11.5	1	24	9.106.025	BOLT, M6X25	2
6	9.106.020	BOLT, M6X1.00X20	4	25	6.000.305	BRAKE CYLINDER	1
7	7.020.059	STEERING BALL JOIN DUST COVER	2	26	9.700.004	BANJO BOLT 10	2
8	6.000.180	STEERING BALL JOIN	2	27	13-1422-00	COPPER CRUSH WASHER 10	4
9	8.010.135-M	TIE ROD	2	28	6.000.091	BRAKE HOSE	1
10	6.000.181	ROD END	2	29	6.000.305-C	MASTER CYLINDER RESERVOIR CAP	1
11	9.220.008	LOCKING NUT M8	2	30	14652	PARKING BRAKE PEDAL	1
12	4.100.024	STEERING GEAR	1	31	003-08033-00	GAS PEDAL LIMIT BOLT	1
13	7.020.043	BRAKE PEDAL	1	32	9.200.008	M8 NUT	1
14	7.020.044	THROTTLE PEDAL	1	33	9.908.014	ALLEN BOLT M8X14	1
15	8.020.130	STEERING GEAR BRACKET	2	34	7.010.003	PEDAL BUSHING	4
16	9.220.006	LOCKING NUT M6	4	35	9.500.218-T	THROTTLE PEDAL ASSEMBLY	1
17	9.220.012	LOCKING FLANGE NUT M12	1	36	8.040.010	THROTTLE PEDAL RETURN SPRING	1
18	9.500.008	ROLL PIN	3	37	8.040.011	BRAKE PEDAL RETURN SPRING	1
19	8.010.123-R	PEDAL BOLT	1	38	9.220.008	NUT, M8X1.25 LOCKING FLANGE	1
				39	4.010.001	Plastic Steering Gear Holder	1
				40	7.020.082	Steering gear Holder Cover/Cap	1

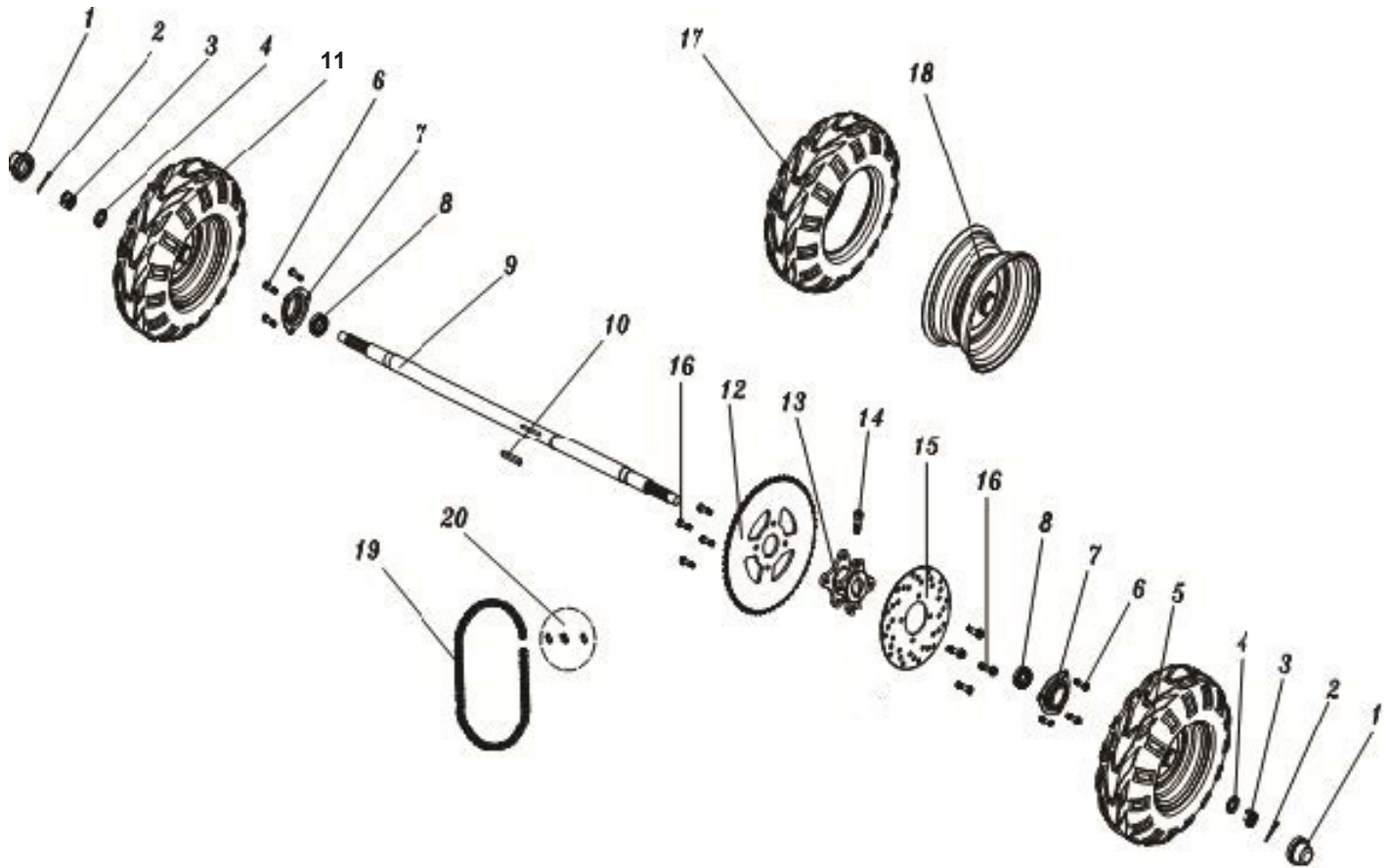


# FRONT SUSPENSION



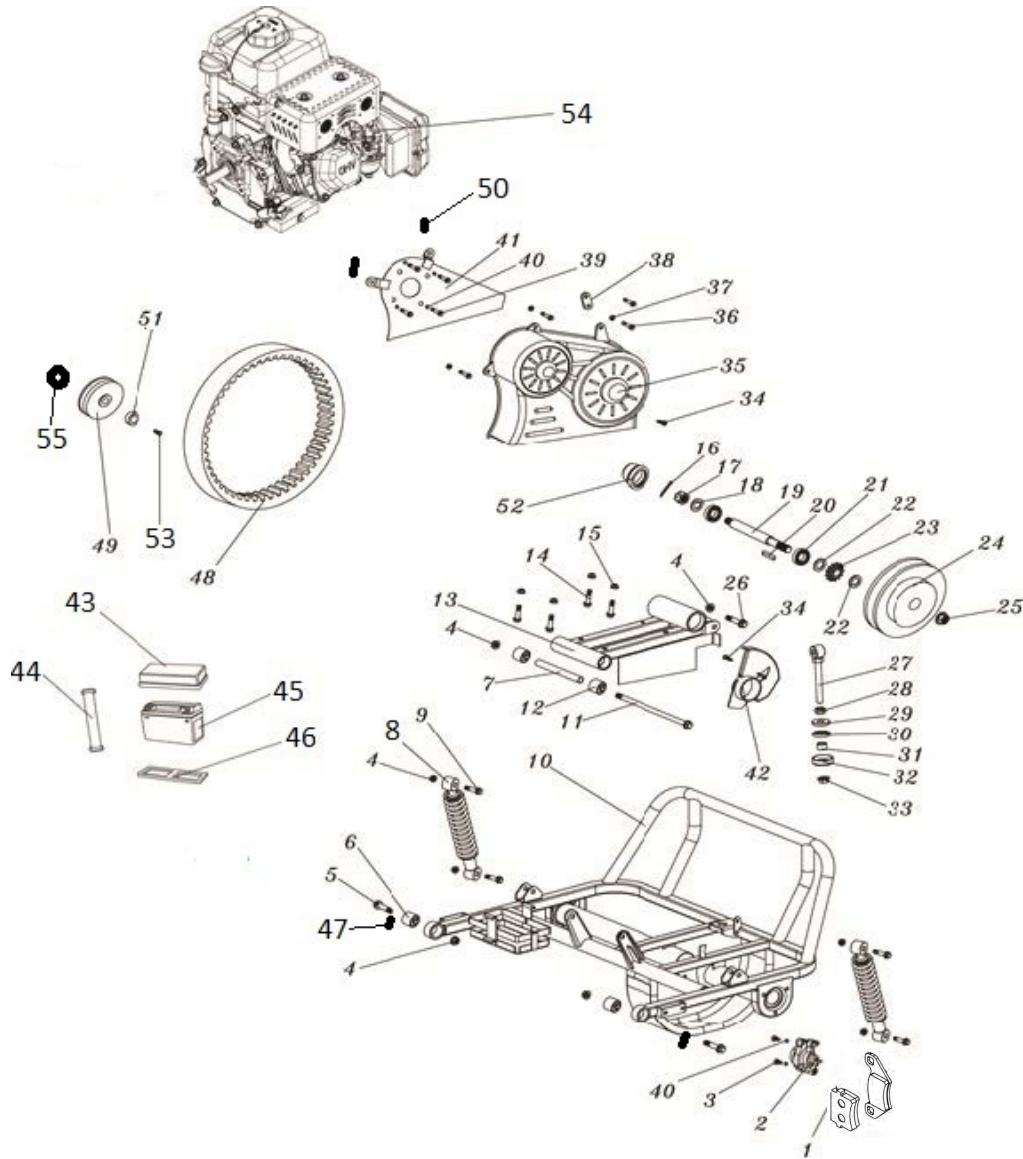
REF #	PART NUMBER	DESCRIPTION	COUNT
1	6.000.311	TIRE 16X6-8	2
2	6.000.310-BK	8" FRONT RIM (BLACK)	2
3	6.000.321	RIGHT FRONT TIRE/WHEEL ASSEMBLY	1
4	9.500.200	COTTER PIN	6
5	9.800.010	CASTLE NUT M10	4
6	9.220.008	LOCKING FLANGE NUT, M8	4
7	4.000.047	UPPER SUSPENSION ARM	2
8	7.010.003	UPPER SUSPENSION ARM BUSHING	8
9	8.010.104	UPPER SUSPENSION ARM COLLAR	2
10	9.108.095	FLANGE BOLT M8X1.25X95	2
11	6.100.325	FRONT SHOCK	2
12	9.220.010	LOCKING FLANGE NUT, M10	4
13	9.110.040	FLANGE BOLT M10X40	4
14	9.708.145	FLANGE BOLT M8X1.25X145	2
15	4.000.041	LOWER SUSPENSION ARM ASSY	2
16	7.020.079	BALL HEAD DUST SEAL	2
17L	2.000.057-80	SPINDLE (L)	1
17R	2.000.055-80	SPINDLE ( R )	1
18	9.030.010	BEARING 6202	2
19	6.000.309	LEFT FRONT TIRE/WHEEL ASSEMBLY	1
20	9.030.009	BEARING 6201	2
21	9.300.012	WASHER	2
22	9.800.012	Castle Nut M12	2
23	7.020.039	HUB COVER FRONT	2

# REAR HOUSING



REF#	PART NUMBER	DESCRIPTION	COUNT
1	7.020.039	HUB COVER, RR	2
2	9.500.330	COTTER PIN	2
3	9.800.016	M16X1.5 CASTLE NUT	2
4	9.300.016	WASHER	2
5	6.000.316	LEFT REAR TIRE/ WHEEL ASSEMBLY	1
6	9.108.016	FLANGE BOLT M8X1.25.X16	6
7	6.000.195	AXLE COVER	2
8	9.030.018	BEARING 6005	2
9	20-1101-00	REAR AXLE	1
10	8.010.138	AXLE HUB KEYWAY	1
11	6.000.315	RIGHT REAR TIRE/WHEEL ASSEMBLY	1
12	8.010.200-T	REAR SPROCKET (60T)	1
13	8.010.202-M	REAR AXLE SPROCKET/DISC HUB	1
14	9.129.816	ALLEN HEAD BOLT M8X1.25X10	1
15	8.010.201	BRAKE DISC, RR	1
16	9.108.020	FLANGE BOLT M8X20	8
17	7.020.078	REAR TIRE (16X7-8)	2
18	6.000.333-BK	8" REAR RIM (black)	2
19	7.160.016	CHAIN ( 420HX68L)	1
20	6.100.324	MASTER LINK	1

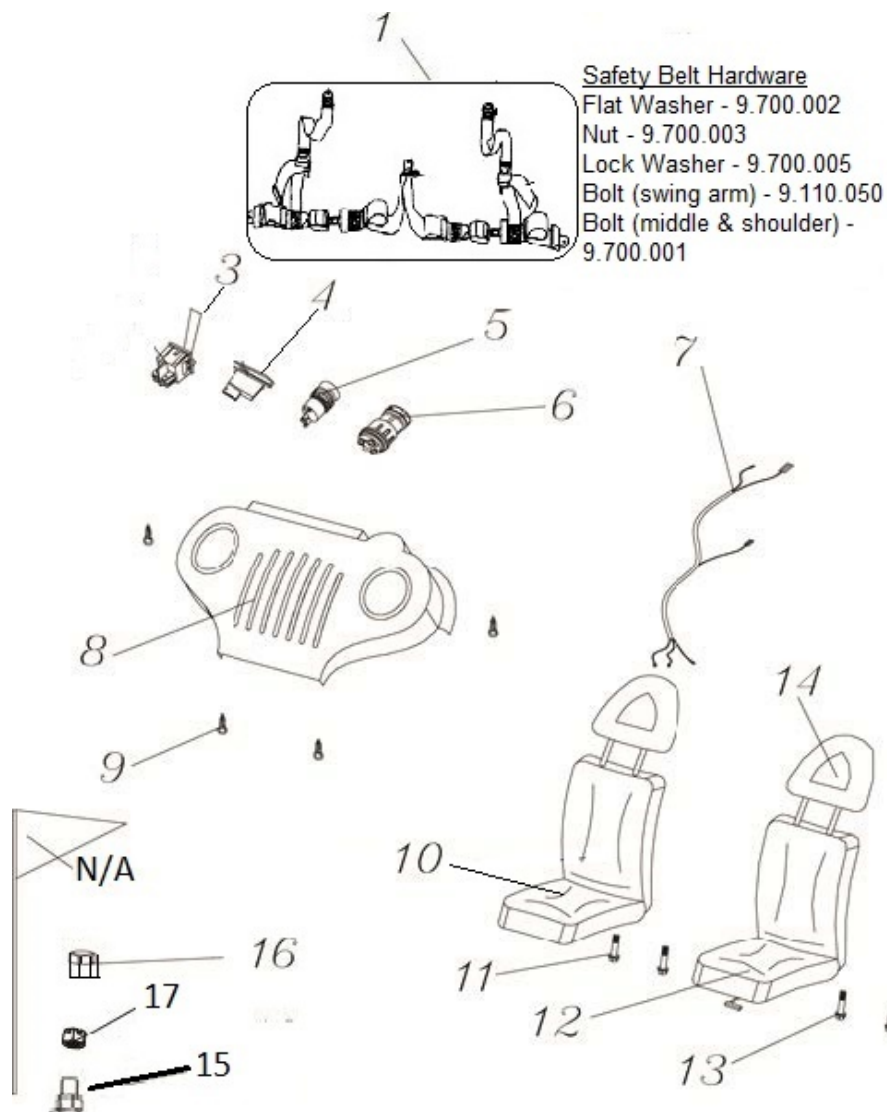
# ENGINE / SWING ARM / CLUTCH



REF #	PART NUMBER	DESCRIPTION	COUNT	REF #	PART NUMBER	DESCRIPTION	COUNT
1	7.020.016	REAR BRAKE PAD	1	28	9.200.012	NUT, M12	1
2	6.000.028	REAR BRAKE CALIPER	1	29	8.010.042	WASHER, CHAIN ADJUSTER	1
3	9.908.014	ALLEN BOLT M8X1.25X14	2	30	7.020.001	BUSHING, CHAIN ADJUSTER	1
4	9.220.010	NUT, M10X1.25 LOCKING FLANGE	8	31	8.010.041	CAP WASHER, CHAIN ADJUSTER	1
5	9.110.050	BOLT, M10X1.25X50	2	32	8.020.045	BOTTOM CAP WASHER - CHAIN ADJUST	1
6	7.020.056	SWINGARM BUSHING	2	33	9.220.012	NUT, M12	1
7	14666	COLLAR	1	34	9.106.014	BOLT, M6X1.00X14	2
8	6.000.322	REAR SHOCK	2	35	8.110.021	DRIVE COVER PLASTIC	1
9	9.110.040	BOLT, M10X1.25X40	4	36	9.106.020	BOLT, M6X1.00X20 FHCS ZN	4
10	20-0626-00	REAR SWING ARM	1	37	9.220.006	NUT, M6	3
11	14662	BOLT, M10X1.25X174	1	38	N/A	DRIVE COVER EXTENTION LINK	1
12	7.020.056	BUSHING	2	39	9.108.016	BOLT, M8X16	4
13	20-0604-00	ENGINE MOUNTING PLATE	1	40	9.400.008	LOCK WASHER 8	6
14	9.108.050	BOLT, M8X1.25X50	4	41	20-0603-00	SAFETY PLATE	1
15	9.220.008	NUT, M8X1.25 LOCKING FLANGE	4	42	14707	GUARD, REAR CHAIN	1
16	9.500.003	COTTER PIN, M4X30	1	43	7.010.028	BATTERY COVER	1
17	9.800.014	NUT, M14X1.25 CASTLE	1	44	7.020.023	BATTERY STRAP	1
18	9.300.014	WASHER, M14	1	45	6.000.055	BATTERY	1
19	8.011.057-N	SHAFT, SPROCKET & DRIVER PULLEY	1	46	7.020.020	BATTERY CUSHION	1
20	8.010.027	KEYWAY	1	47	003-10040-00	SAFETYBELT COLLAR	2
21	6.100.065	6004 BEARING	2	48	9.110.018	DRIVE BELT 725	1
22	9.701.016-K	FLAT WASHER	1	49	9.500.010	Front Clutch	1
23	8.011.077	SPROCKET, 10T DRIVEN	1	50	14892	Nut Clip	2
24	9.500.001	Rear Clutch	1	51	9.500.009-F	WASHER, M8	1
25	9.700.098	NUT, M16X1.25 LOCKING FLANGE	1	52	14723	CAP, JACKSHAFT 2 IN	1
26	9.110.040	BOLT, M10X40	1	53		5/16-24 x 1.75 Bolt	1
27	8.147.008	CHAIN ADJUSTER	1	54	006-LCT208	LCT ENGINE 208CC ELECTRIC START	1
				55	AJKDC-02	Brass Clutch Bushing	1



# ELECTRICALS / SEATS / SEAT BELT



REF #	PART NUMBER	DESCRIPTION	COUNT
1	6.100.328	SAFETY BELT	1
2			
3	20-0320-00	POWER ON/OFF TOGGLE SWITCH	1
4	6.000.133-M	HORN BUTTON	1
5	20-0320-01	HEADLIGHT SWITCH	1
6	20-0301-00	IGNITION KEY SWICH	1
7	20-0303-01	WIRING HARNESS	1
8	7.110.076	SWICH PANEL COVER	1
9	9.600.410	SCREW 4X10	4
10	6.000.330	PASSENGER SEAT	1
11	9.108.040	BOLT M8X1.25X40	2
12	6.000.331	DRIVER SEAT	1
13	9.900.840	SEAT RAIL BOLT M8X1.25X40	2
14	6.000.329	HEAD REST	2
15	14465	FLAG POLE BOLT (plastic)	1
16	14466	FLAG POLE NUT(tall plastic)	1
17	14492	FLAG POLE NUT (metal)	1