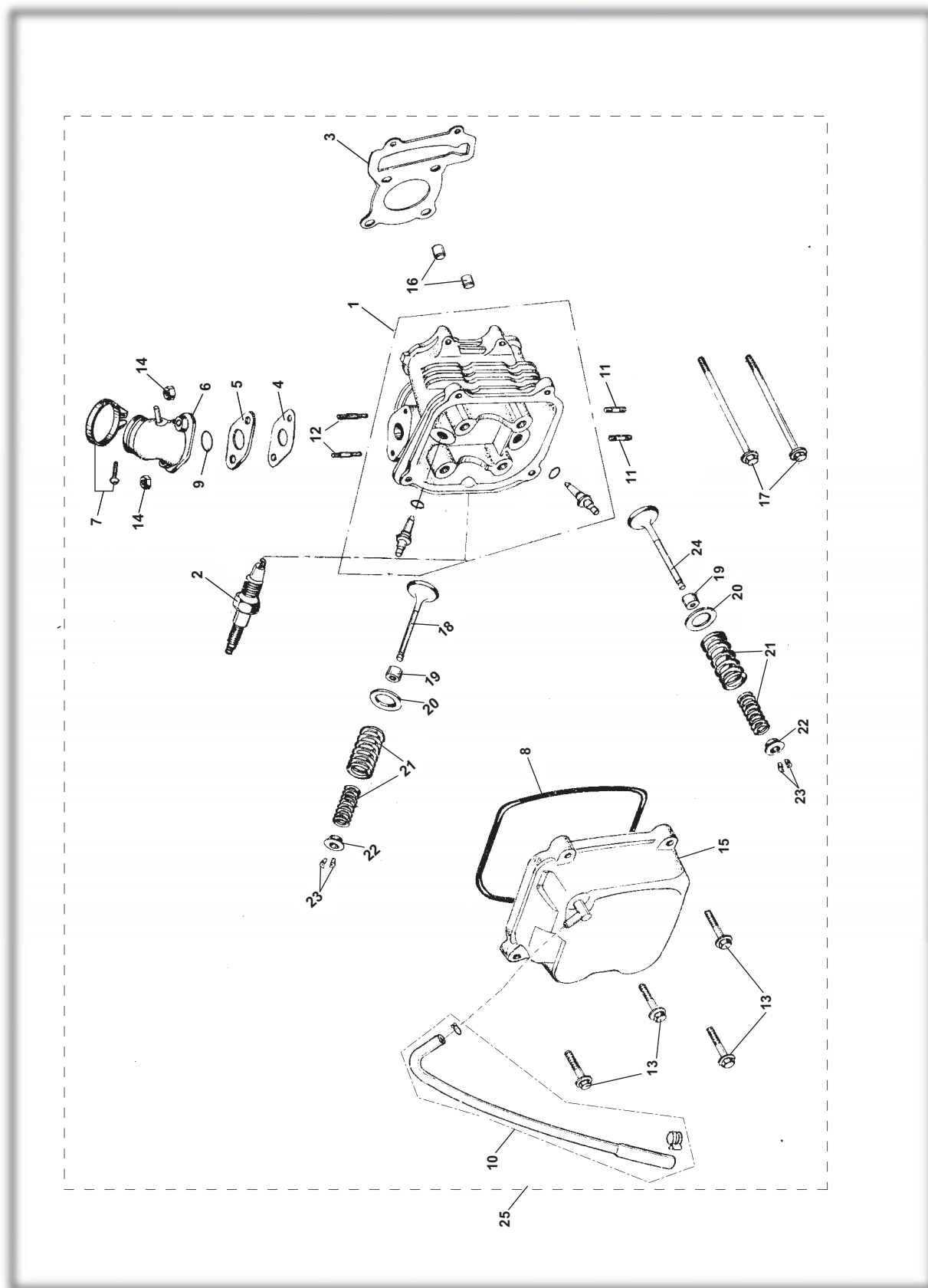
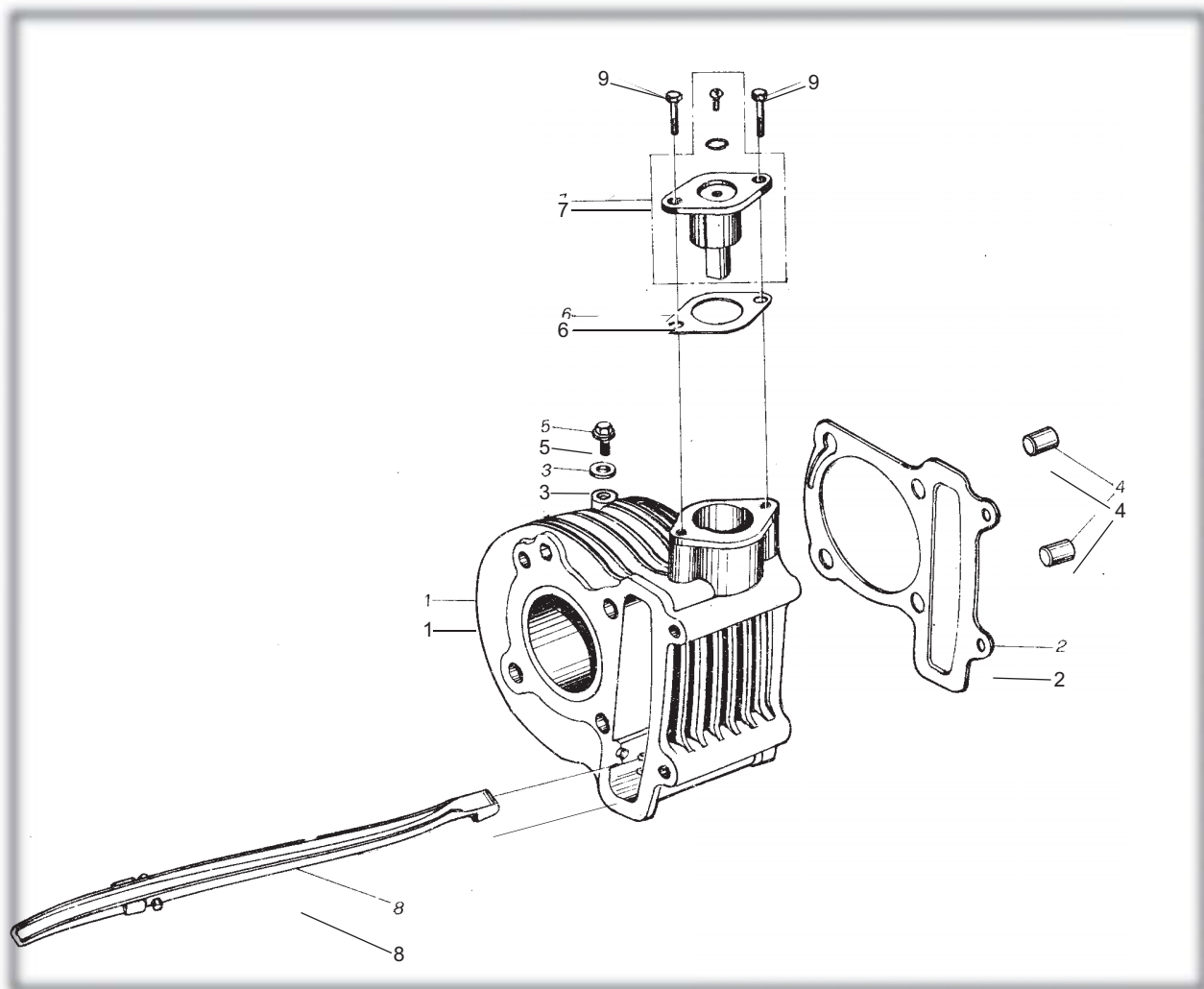


# FIG.1

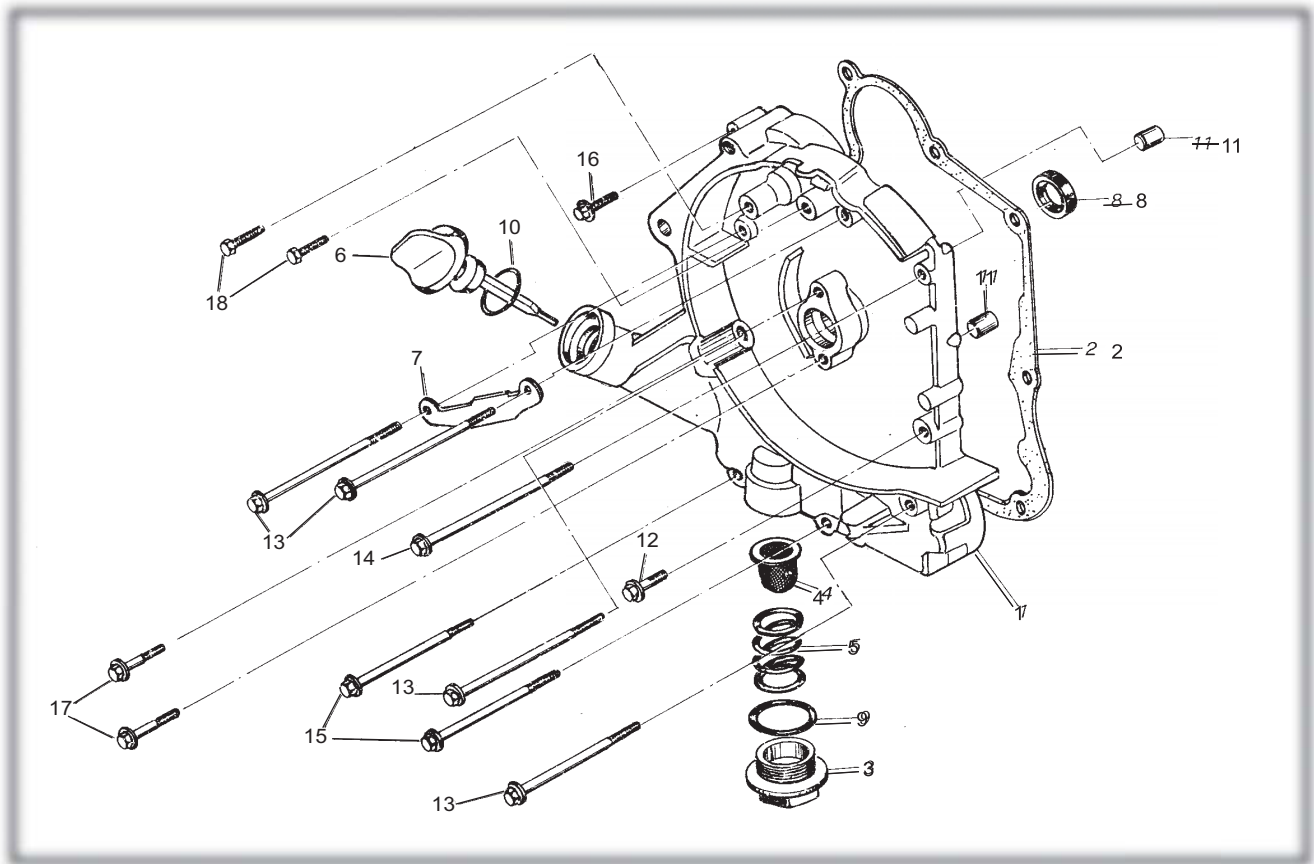
## CYLINDER HEAD ASSY.



[illegible]

**CYLINDER ASSY.**

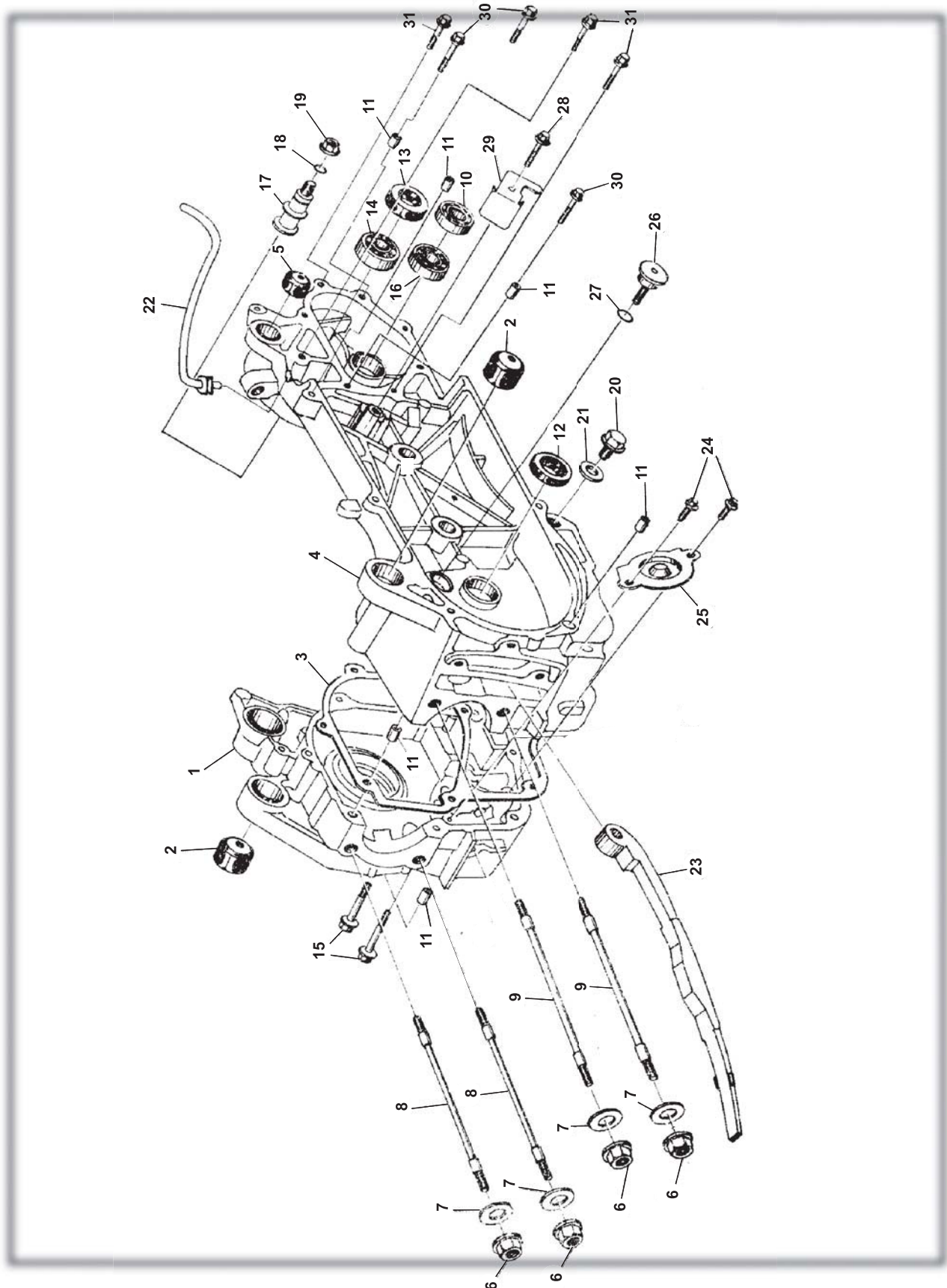
<b>CYLINDER ASSY.</b>				
REF NO.	PART NO.	DESCRIPTION	REGD NO.	
1	M150-1002200	CYLINDER COMP.	1	
2	M150-1002001	CYLINDER GASKET	1	
3	90442-06000-KAT	WASHER SEALING 6	1	
4	M150-1001007	DOWEL PIN 10X16	2	
5	96001-06012-KAT	FLANGE BOLT M6X12-ZN. D	1	
6	M150-1002002	GASKET TENSIONER LIFTER	1	
7	M150-1002100	TENSIONER LIFTER ASSY.	1	
8	M150-1002300	CAM CHAIN GUIDE COMP.	1	
9	96001-06020-KAT	FLANGE BOLT 6X20	2	

**CRANKCASE ASSY. (1)****CRANKCASE ASSY.(1)**

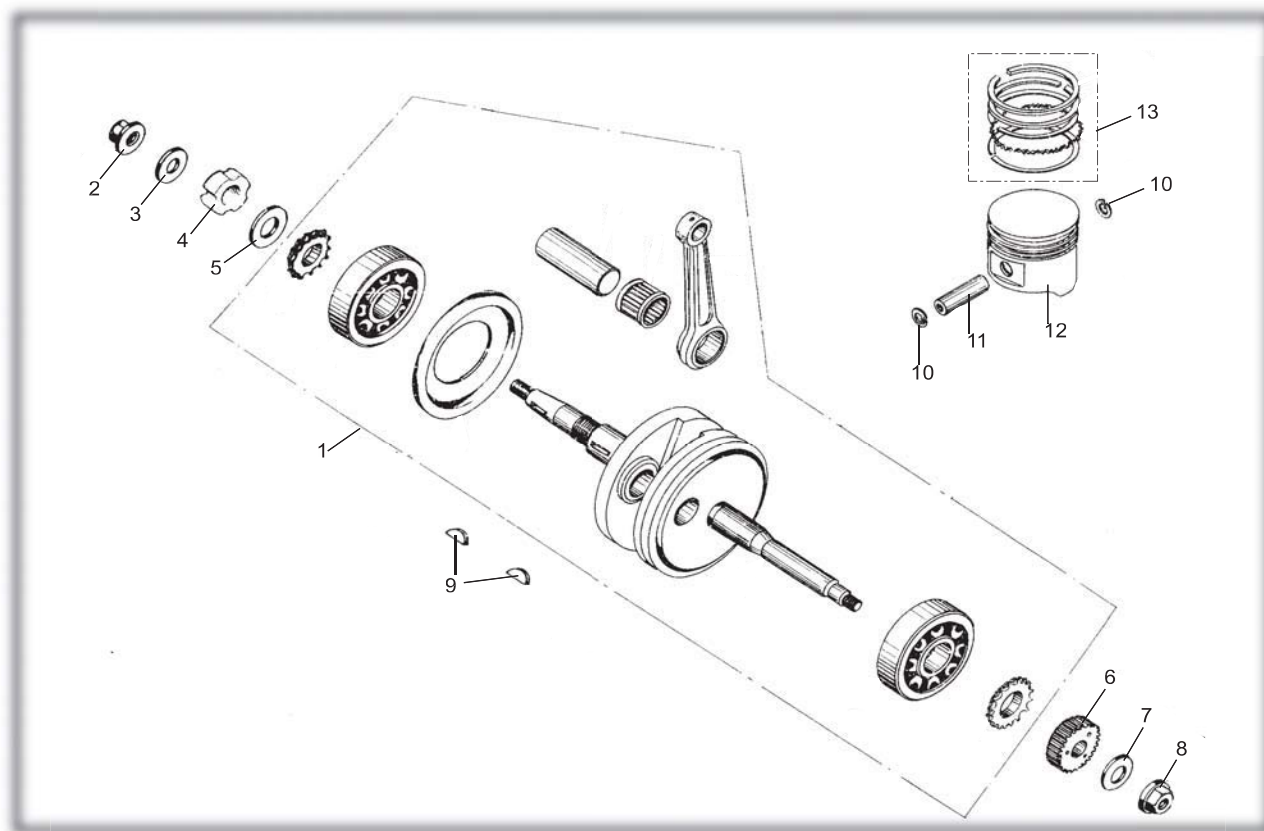
REF NO.	PART NO.	DESCRIPTION	REGD NO.	
1	M150-1003101-B	R CRANKCASE COVER COMP.	1	
2	M150-1003013	CRANKCASE COVER GASKET	1	
3	M150-1003104	CAP TAPPET ADJUSTING HOLE	1	
4	M150-1003120	OIL FILTING SCREEN	1	
5	M150-1003102	OIL FILTING SCREEN SPRING	1	
6	M150-1003105	OIL LEVEL GAUGE	1	
7	M150-1003006	AC GENERATOR CORD CLAMPER	1	
8	M150-1003110	OIL SEAL 19.8X30X5	1	
9	M150-1003103	O-RING 30.8X3	1	
10	M150-1003307	O-RING 18X3	1	
11	M150-1003005	DOWEL PIN 8X14	2	
12	96001-06032-KAT	FLANGE BOLT M6X28	1	
13	M150-1003012	FLANGE BOLT M6X95	4	
14	M150-1003007	FLANGE BOLT M6X100	1	
15	M150-1003008	FLANGE BOLT M6X110	2	
16	M150-1003034	FLANGE BOLT M6X35	1	
17	M150-1003106	FLANGE BOLT M6X20	2	
18	92101-05012-OH	HEX BOLT M5X12-ZN.D	2	

# FIG.4

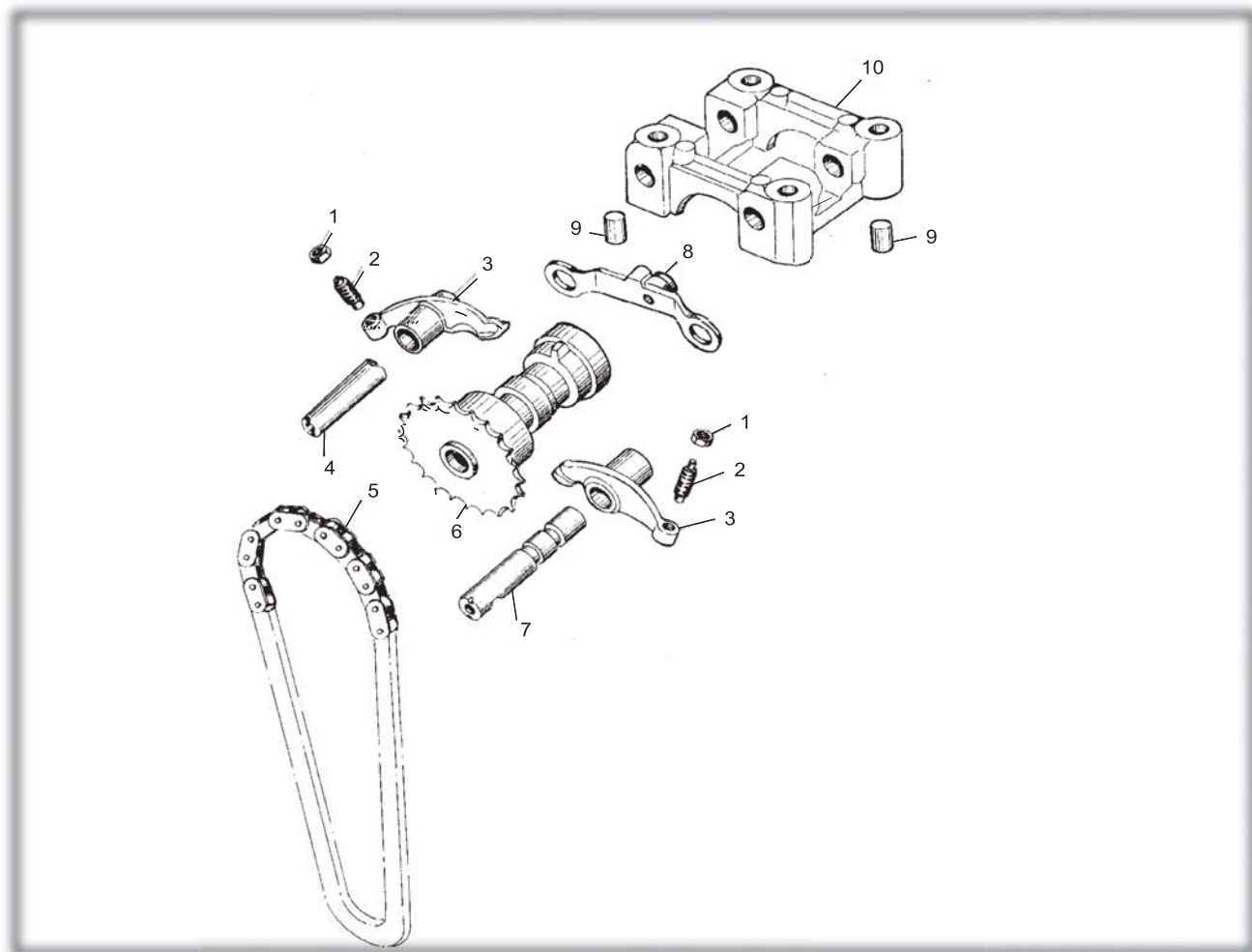
## CRANKCASE ASSY. (2)



[illegible]

**CRANKSHAFT CON'ROD & PISTON ASSY.****CRANKSHAFT CON'ROD & PISTON ASSY.**

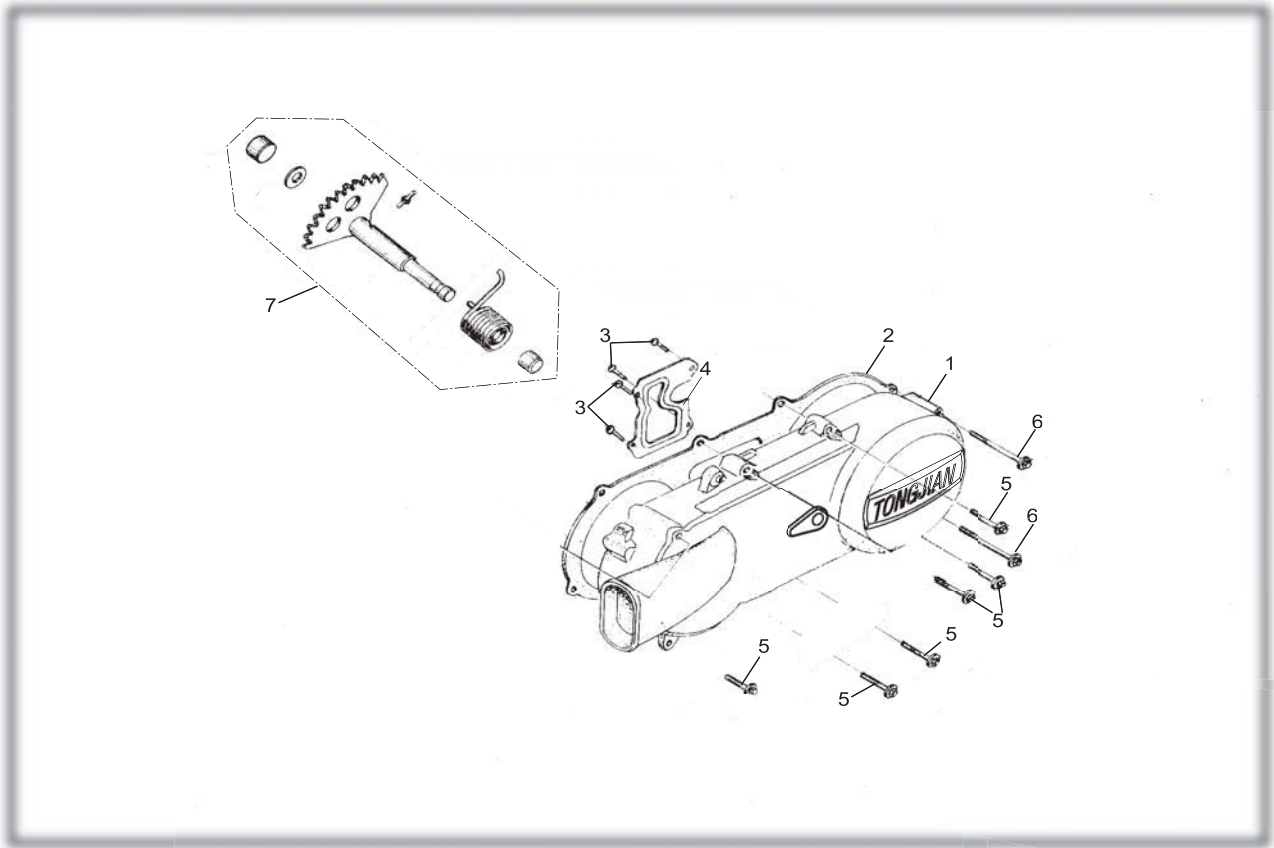
REF NO.	PART NO.	DESCRIPTION	REGD NO.	
1	M150-1004100	CRANKSHAFT & CONROD ASSY.	1	
2	M150-1004007	NUT M12X1.25	1	
3	M150-1004011	WASHER 12-149HV 12-140HV	1	
4	M150-1004009	LOCKING NUT	1	
5	M150-1004013	WASHER	1	
6	M150-1004012	KICK DRIVE GEAR	1	
7	M150-1040005	WASHER $\Phi 12$	1	
8	M150-1004008	NUT M12	1	
9	M150-1004002	WOODRUFF KEY	2	
10	M150-1004003	PISTON PIN CLIP	2	
11	M150-1004006	PISTON PIN	1	
12	M150-1004001	PISTON	1	
13	M150-1004200	PISTON RING SET	1	

**CAMSHAFT ASSY.****CAMSHAFT ASSY.**

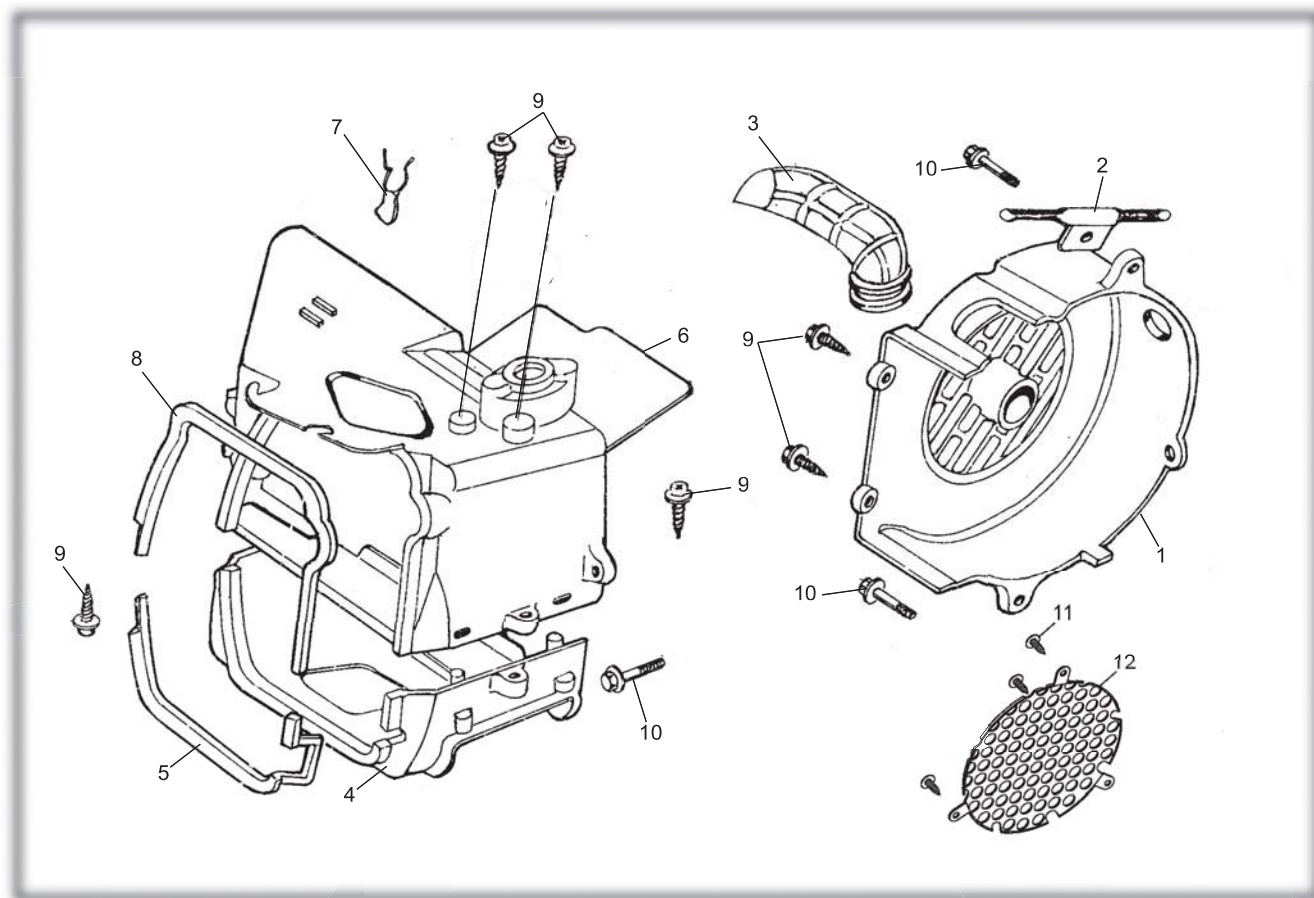
REF NO.	PART NO.	DESCRIPTION	REGD NO.	
1	M150-1005004	TAPPET ADJUSTING NUT	2	
2	M150-1005003	TAPPET ADJUSTING SCREW	2	
3	M150-1005002	VALVE ROCKER ARM	2	
4	M150-1005005	EX ROCKER ARM SHAFT	1	
5	M150-1005400	CAMSHAFT CHAIN	1	
6	M150-1005300	CAMSHAFT COMP. 16T	1	
7	M150-1005200	IN ROCK ARM SHAFT COMP.	1	
8	M150-1005100	STOPPER PLATE COMP.	1	
9	M150-1001007	DOWEL PIN 10X16	2	
10	M150-1005001	CAMSHAFT HOLDER	1	



LEFT COVER ASSY.

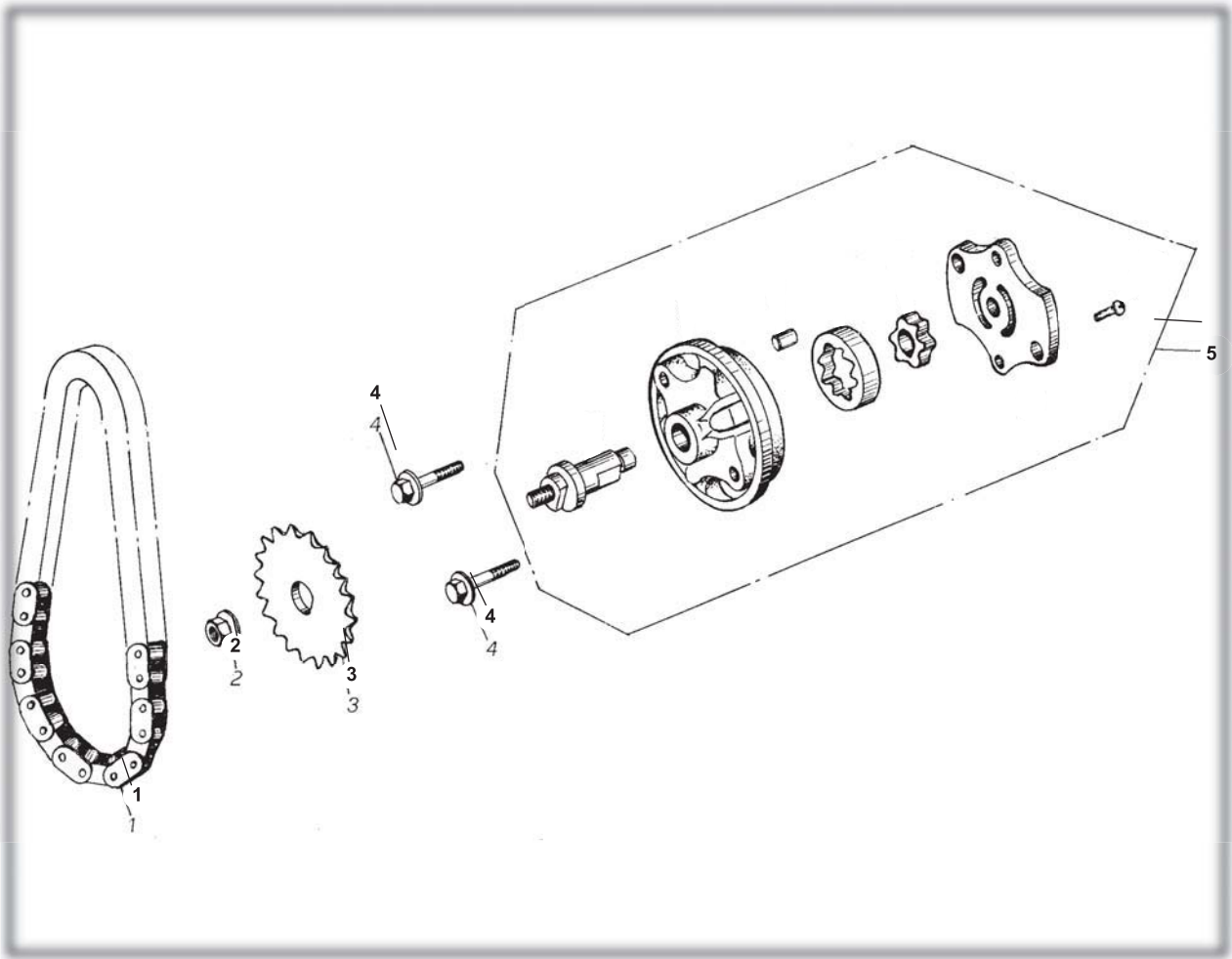


LEFT COVER ASSY.				
REF NO.	PART NO.	DESCRIPTION	REGD NO.	
1	M150-1008101	COVER L	1	
2	M150-1008005	L COVER GASKET	1	
3	93903-00428-KAT	TAPPING SCREW ST4.2X8-F-H	4	
4	M150-1008102	L COVER PLATE	1	
5	M150-1003034	FLANGE BOLT M6X40	6	
6	M150-1008006	FLANGE BOLT M6X65	2	
7	M150-1008200	KICK STARTER ASSY. SPINDLE COMP.	1	

**FAN COVER AND SHROUD ASSY.****FAN COVER AND SHROUD ASSY.**

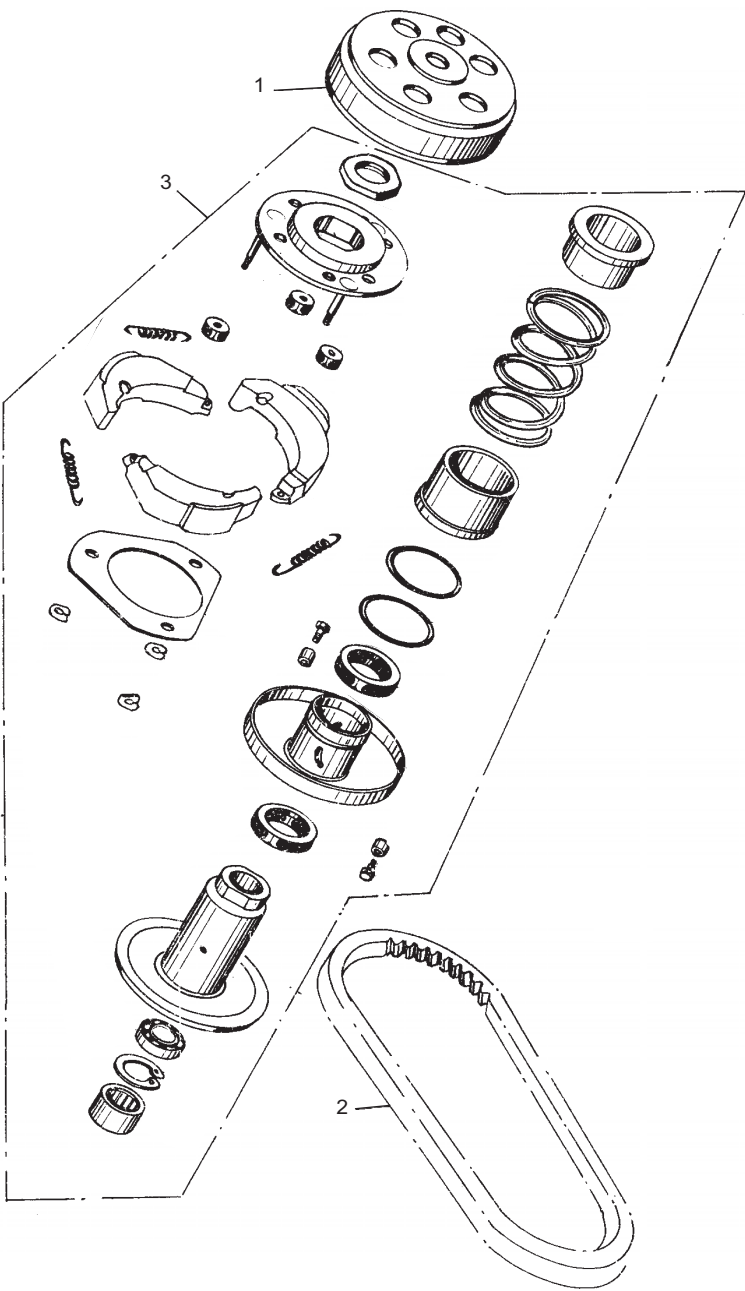
REF NO.	PART NO.	DESCRIPTION	REGD NO.	
1	M150-1009410	FAN COVER COMP.	1	
2	M150-1009002	STARTER CABLE CLAMPER	1	
3	M150-1009401	CARBURETOR COOLING DUCT	1	
4	M150-1009301	LOWER SHROUD	1	
5	M150-1009302	LOWER SHROUD SEAL	1	
6	M150-1009110	UPPER SHROUD COMP.	1	
7	M150-1009103	HIGH TENSION CORD CLIP	1	
8	M150-1009102	UPPER SHROUD SEAL	1	
9	M150-1009402	SCREW ST4.8X16-F	6	
10	M150-1003075	BOLT M6X25	3	
11	ST3.5X13 GB845	SCREW ST3.5×13-F	3	
12	8.020.179	DUST COVER	1	

OIL PUMP ASSY.



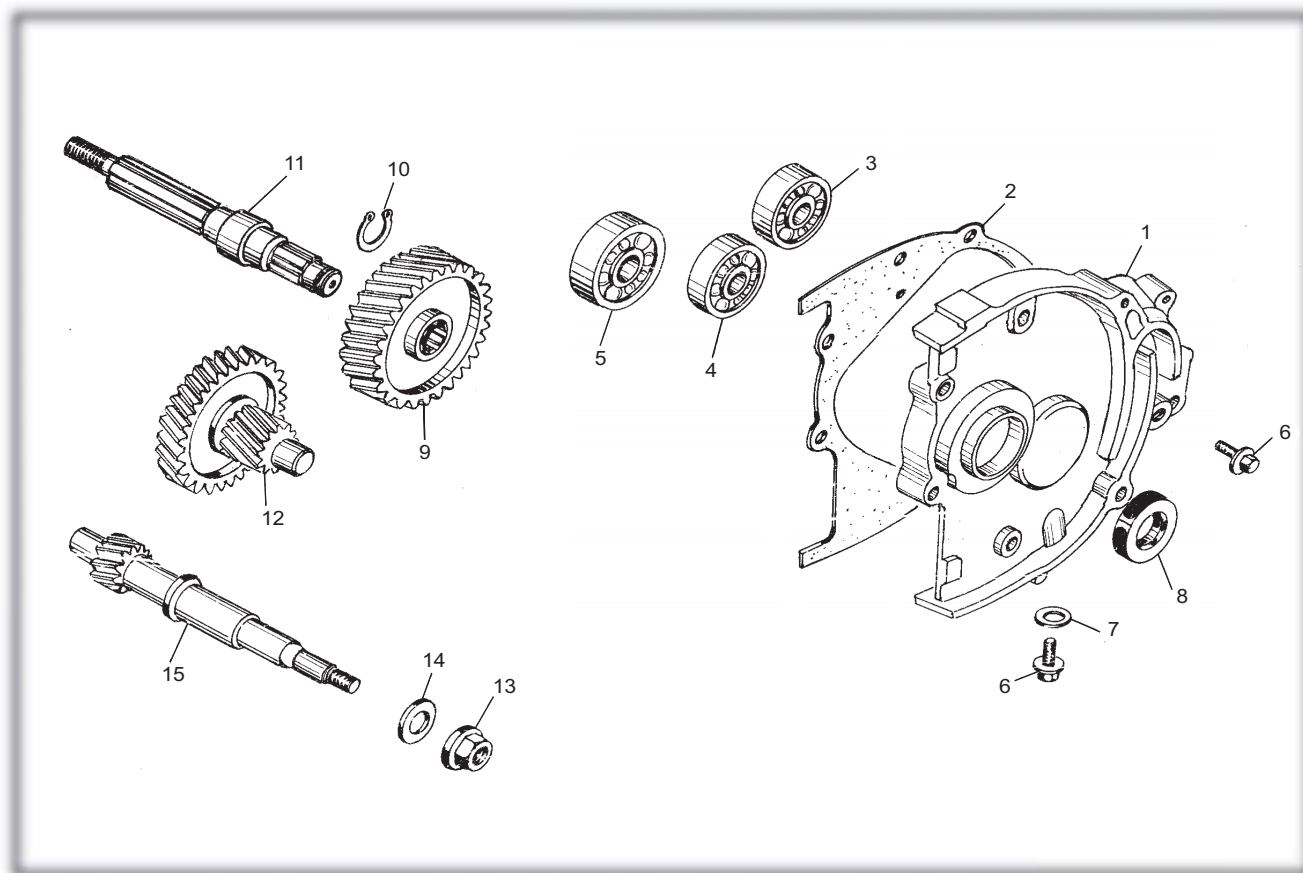
OIL PUMP ASSY.				
REF NO.	PART NO.	DESCRIPTION	REGD NO.	
1	M150-1021000	CHAIN OIL PUMP	1	
2	M150-1020002	NUT FLANGE M6	1	
3	M150-1020001	SPROCKET OIL PUMP DRIVEN	1	
4	M150-B-1003075	BOLT M6X25	2	
5	M150-1022000	OIL PUMP SUB ASSY.	1	

DRIVEN PULLEY AND CLUTCH SUBASSY.



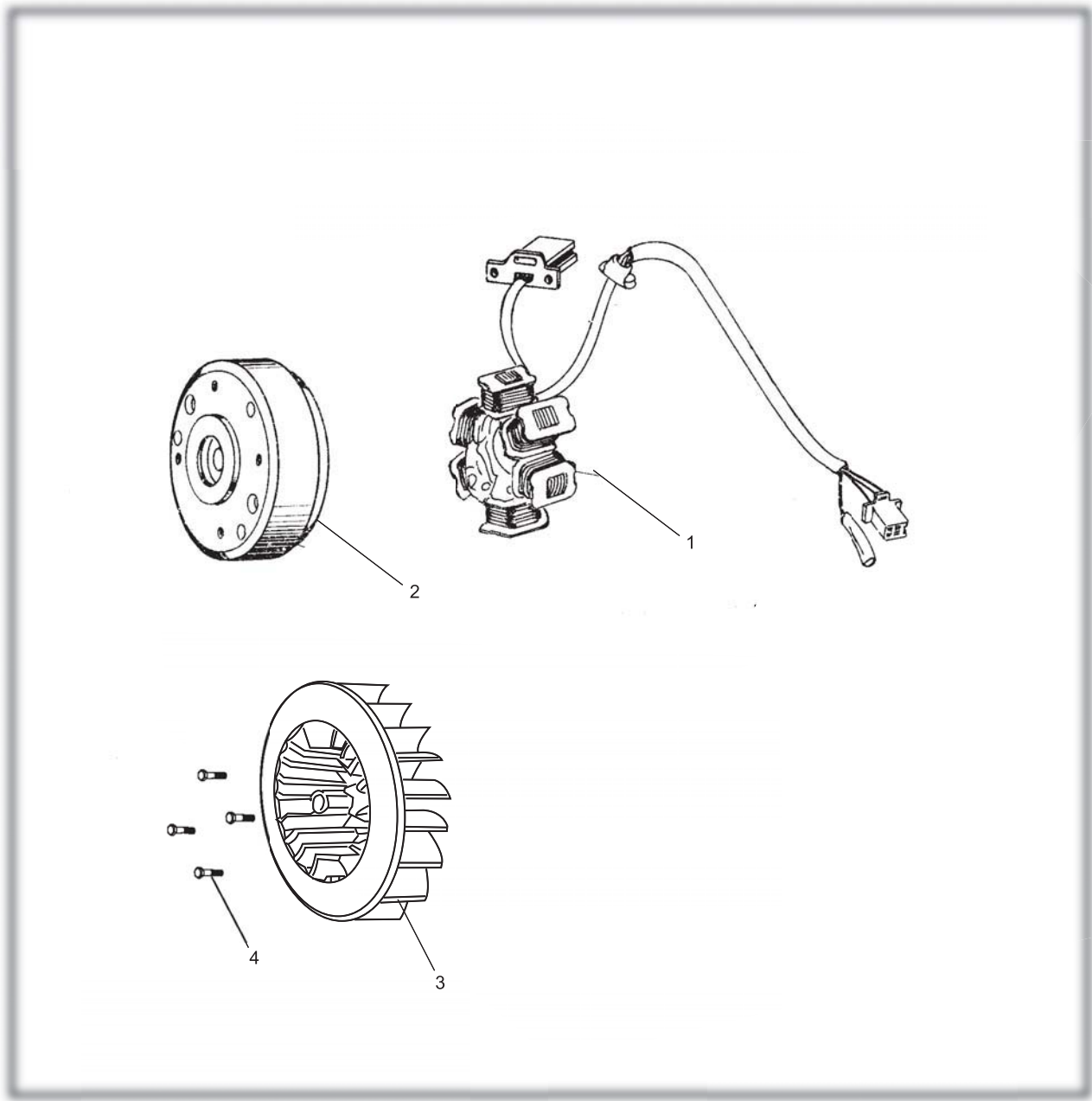
DRIVEN PULLEY AND CLUTCH SUBASSY.

REF NO.	PART NO.	DESCRIPTION	REGD NO.	
1	M150-1032000	CLUTCH ASSY. OUTER	1	
2	M150-1033000	DRIVE BELT	1	
3	M150-1031000	DRIVEN PULLEY ASSY.	1	

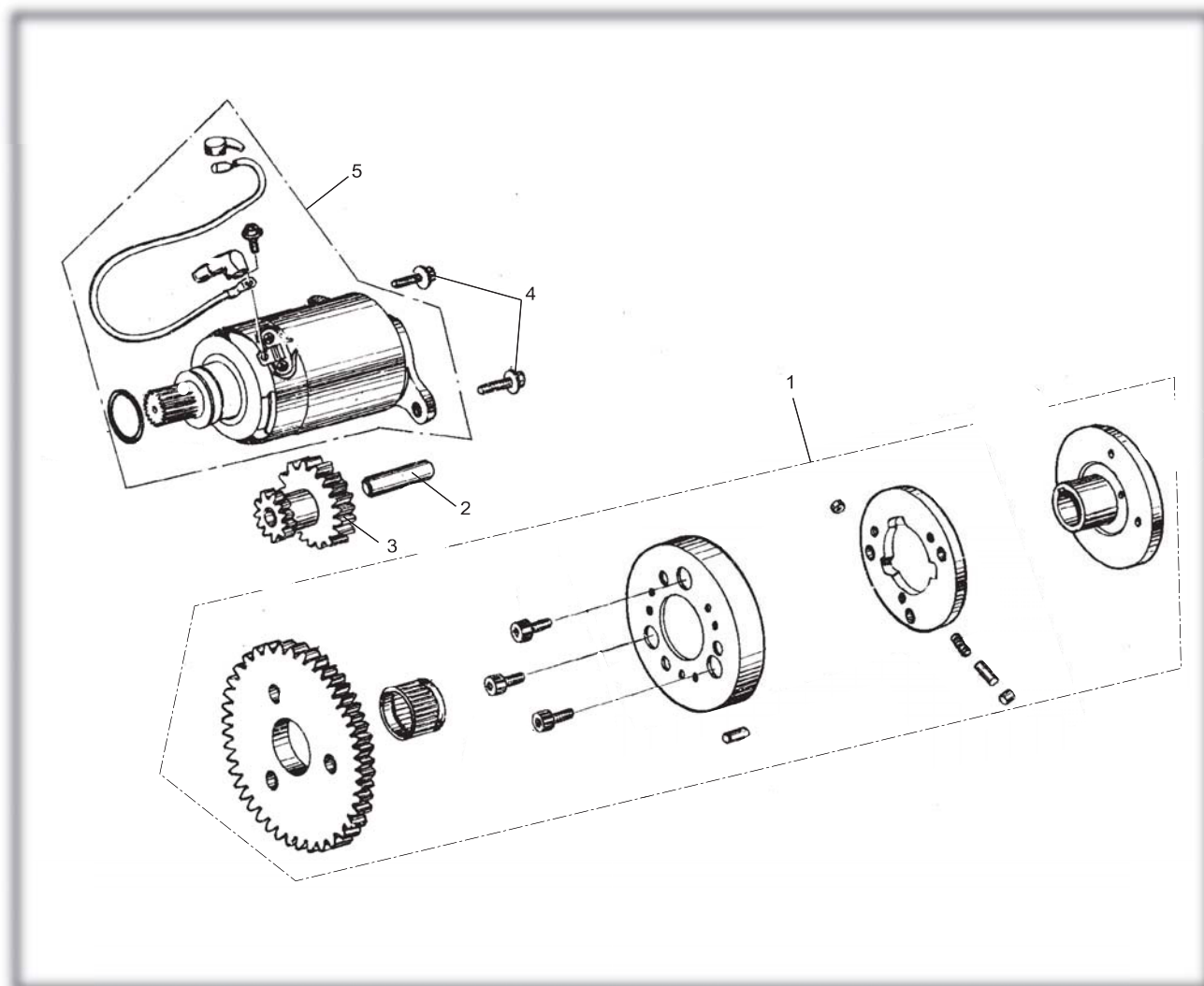
**TRANSMISSION ASSY.****TRANSMISSION ASSY.**

REF NO.	PART NO.	DESCRIPTION	REGD NO.	
1	M150-1040001	TRANSMISSION COVER	1	
2	M150-1041000	TRANSMISSION COVER GASKET	1	
3	91004-E6203-KAT	RADIAL BALL BEARING E6203	1	
4	91004-E6202-KAT	RADIAL BALL BEARING E6202	1	
5	91004-E6204-KAT	RADIAL BALL BEARING E6204	1	
6	M150-1040008	SPECIAL BOLT M8X12	2	
7	M150-1040002	WASHER Φ8	1	
8	M150-1042000	OIL SEAL 20X32X6	1	
9	M150-1040004	FINAL GEAR	1	
10	94510-20000	EXTERNAL CIRCLIP 20	1	
11	M150-1040003	FINAL SHAFT	1	
12	M150-1043000	COUNTER SHAFT COMP.	1	
13	M150-1040007	COMPRESSOR FLANGE NUT M12	1	
14	M150-1040005	WASHER Φ12	1	
15	M150-1040006	DRIVE SHAFT	1	

ELECTRIC SYSTEM

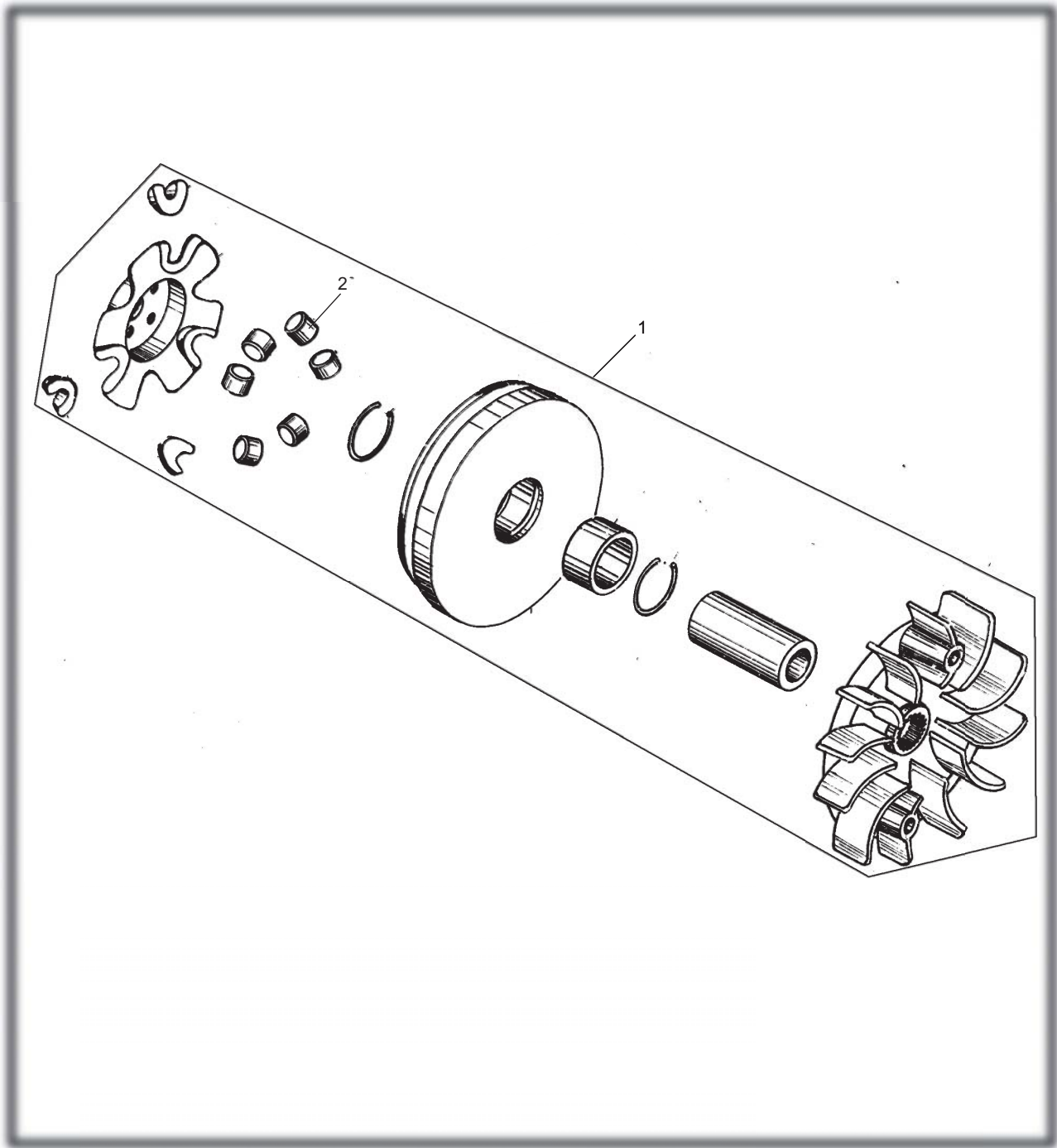


ELECTRIC SYSTEM				
REF NO.	PART NO.	DESCRIPTION	REGD NO.	
1	M150-1051200-8	STATOR COMP.	1	
2	M150-1051100	FLYWHEEL COMP.	1	
3	M150-1051100-3	COOLING FAN COMP.	1	
4	M150-1051100-4	FLANGE BOLT M6x18	4	

**ELECTRIC STARTER ASSY.****ELECTRIC STARTER ASSY.**

REF NO.	PART NO.	DESCRIPTION	REGD NO.	
1	M150-1060001	FLANGE STARTING CLUTCH	1	
2	M150-1060002	STARTER REDUCTION GEAR SHAFT	1	
3	M150-1060003	STARTER REDUCTION GEAR	1	
4	M150-1060005	FLANGE BOLT M6X16	2	
5	M150-1064000	STARTER MOTOR ASSY.	1	

DRIVE PULLEY SUBASSY.



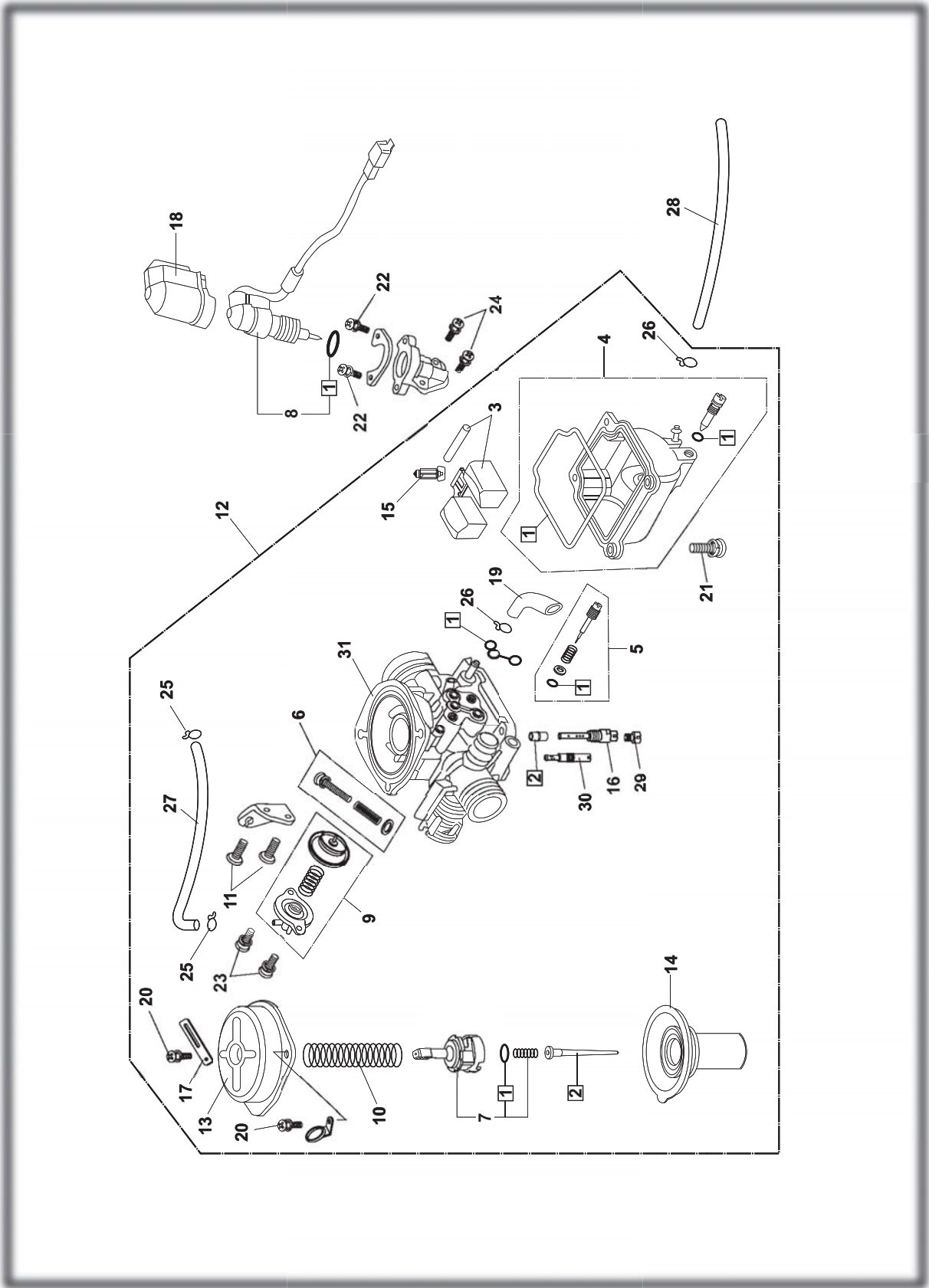
DRIVE PULLEY SUBASSY.

REF NO.	PART NO.	DESCRIPTION	REGD NO.	
1	M150-1071000	MOVABLE DRIVE PULLEY ASSY.	1	
2	M150-10710002	ROYER	6	



FIG.15

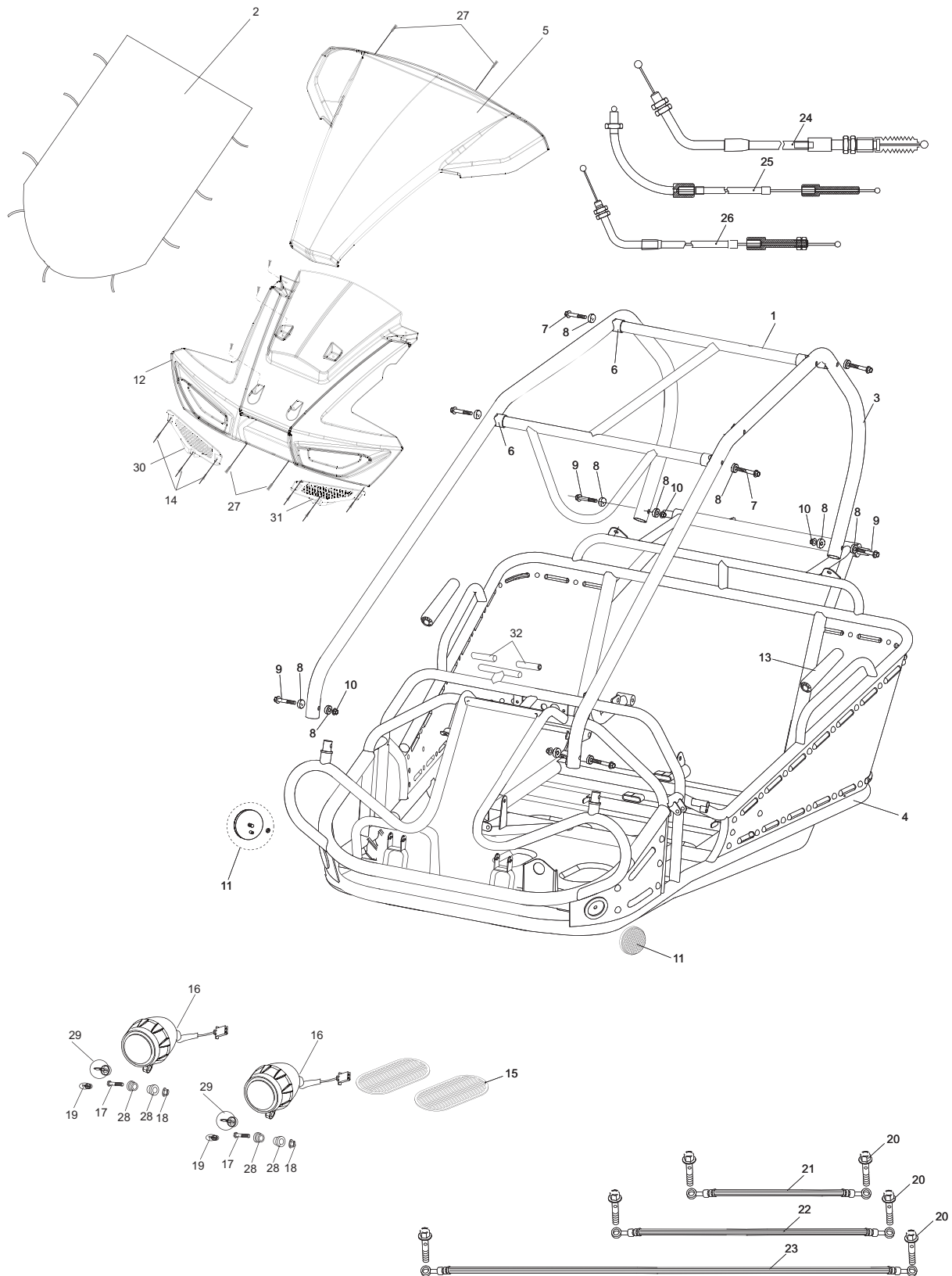
CARBURETOR



[illegible]

# FIG.16

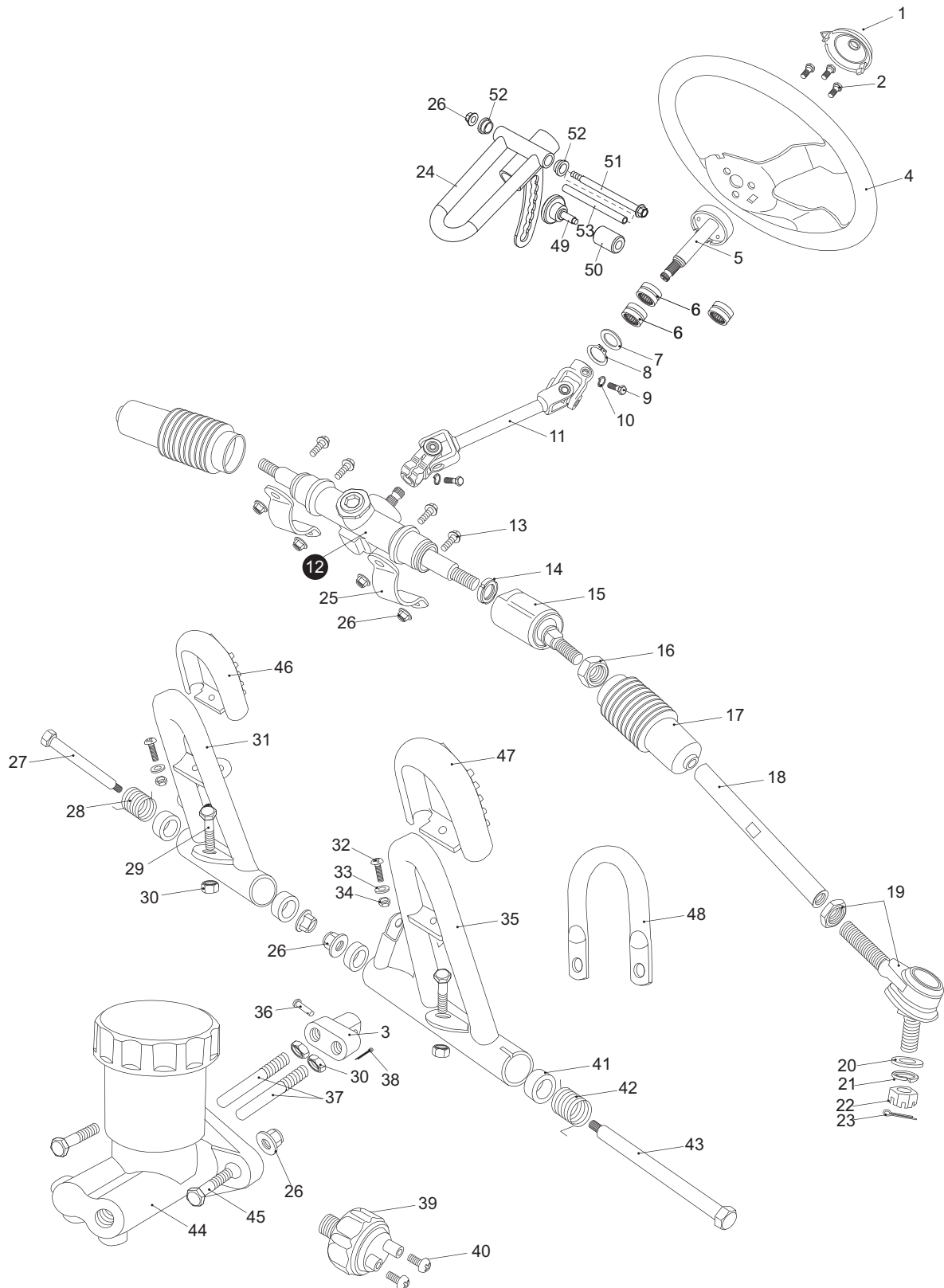
## FRAME GROUP



FRAME GROUP				
REF NO.	PART NO.	DESCRIPTION	REGD NO.	
1	13-0101-00	C.B.C. CROSS BAR	1	
2	13-0801-00	CANOPY TOP	1	
3	8.070.064	C.B.C. BAR CAGE(B.R.S)	2	
4	8.070.066	FRAME COMP.(B.R.S.)	1	
5	13-0201-00	FR. HOOD, UPPER	1	
6	7.010.017	TUBE SEAT $\Phi$ 25	8	
7	9.908.055N	SOCKET BOLT M8X1.25X55	8	
8	8.010.047	R-WASHER	16	
9	9.908.050N	SOCKET BOLT M8X1.25X50	4	
10	9.220.008	LOCKING FLANGE NUT M8	4	
11	6.000.144	FRONT REFLECTOR	2	
12	13-0202-03	FR. HOOD, LOWER	1	
13	6.000.083	FOAM PADDING	2	
14	003-050016-00	SCREW BOLT, M5X16	12	
15	7.020.012	RUBBER FOOT PLATE	2	
16	13-0206-00	HEADLIGHT UNIT	2	
17	9.108.050	FLANGE BOLT M8 x 1.25 x 50	2	
18	9.220.008	NUT M8	2	
19	9.000.004	POSITION LIGHT BULB 3W 12V	2	
20	9.700.004	BANJO BOLT M10x24	6	
21	6.000.089	BRAKE HOSE ASSY. L. 34"	1	
22	6.000.090	BRAKE HOSE ASSY. R. 43"	1	
23	6.000.091	BRAKE HOSE ASSY. RR. 75"	1	
24	6.000.034B	THROTTLE CABLE COMP.	1	
25	6.000.040	REVERSE CABLE COMP.	1	
26	6.000.050	PARKING BRAKE CABLE COMP.	1	
27	003-060012-00	PAN SCREW, M6X12	4	
28	7.020.049	HEADLIGHT RUBBER MOUNT	4	
29	9.090.003	HEADLIGHT BULB 35W/35W/ 12V	2	
30	13-0203-03R	GRILL ORNAMENT, RH.	1	
31	13-0203-03L	GRILL ORNAMENT, LH.	1	
32	13-0501-00	GRIP, HANDLEBAR	1	

# FIG.17

## STEERING SHAFT ASSY.

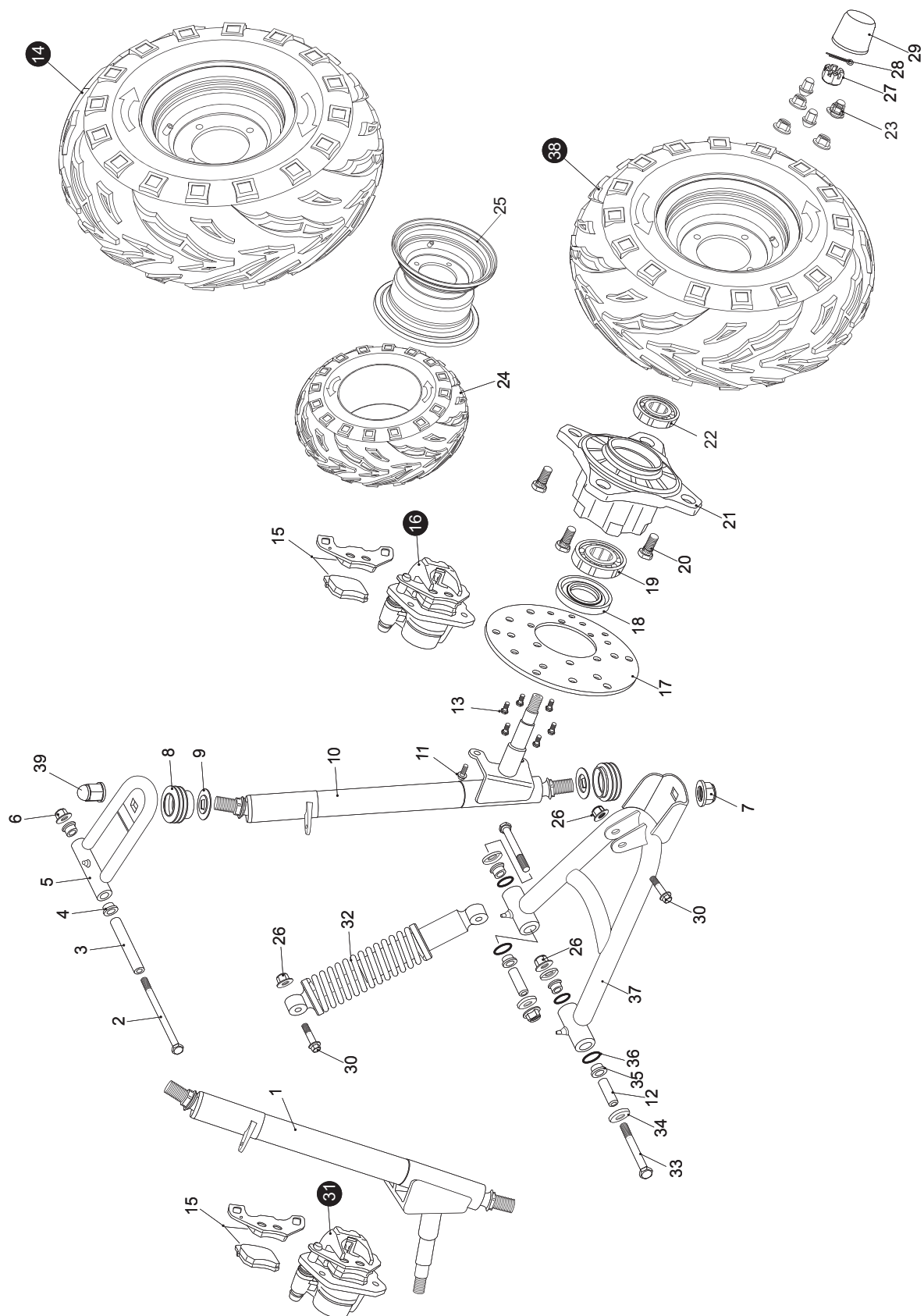


**STEERING SHAFT ASSY.**

REF NO.	PART NO.	DESCRIPTION	REGD NO.	
1	7.010.041	STEERING BOLT COVER	1	
2	9.100.612	BOLT STRAP M6x12	3	
3	8.030.024	SPINDLE BRACKET	1	
4	7.020.038	STEERING WHEEL	1	
5	6.000.122	STEERING SHAFT	1	
6	9.030.012	BEARING NK20/16	2	
7	9.700.020	SPECIAL WASHER $\Phi 20$	1	
8	9.700.120	CIRCLIP $\Phi 20$	1	
9	9.100.825	BOLT M8x25	2	
10	9.400.008	LOCKING WASHER $\Phi 8$	2	
11	6.000.093-250	STEERING KNUCKLE	1	
12	4.000.008-250	STEERING GEAR	1	
13	9.108.025	FLANGE BOLT M8x1.25x25	4	
14	9.900.016	ROUND NUT M16x1.5	2	
15	4.000.008	STEERING BALL JOINT	2	
16	9.200.010	NUT M10	2	
17	7.020.002-250	BALL JOINT DUST COVER. L.	2	
18	8.010.157-250	TIE ROD	2	
19	6.000.062-250	ROD END	2	
20	9.300.010	FLAT WASHER $\Phi 10$	2	
21	9.400.010	LOCKING WASHER $\Phi 10$	2	
22	9.800.010	CASTLE NUT M10	2	
23	9.500.215	COTTER PIN $\Phi 2 \times 15$	2	
24	4.000.051	TILT STEERING HOUSING	1	
25	8.020.014	STEERING GEAR BRACKET	2	
26	9.220.008	LOCKING FLANGE NUT. M8	8	
27	9.708.145	THROTTLE PEDAL BOLT M8x1.25x145	1	
28	8.040.001	THROTTLE PEDAL RETURN SPRING, L	1	
29	9.108.040	FLANGE BOLT M8x1.25x40	2	
30	9.200.008	NUT M8	2	
31	4.000.016	THROTTLE PEDAL COMP.	1	
32	9.600.515	PAN SCREW M5x15	2	
33	9.300.005	FLAT WASHER $\Phi 5$	2	
34	9.210.005	NYLON LOCK NUT M5	2	
35	4.000.015	BRAKE PEDAL COMP	1	
36	9.700.624	PIN 6x24	1	
37	8.010.081	SPINDLE PIN	2	
38	9.500.212	COTTER PIN 2X12	1	
39	6.000.063	BRAKE LAMP SWITCH ASSY.	1	
40	9.600.306	PAN SCREW M3x6	2	
41	7.010.004	PEDAL BUSH	4	
42	8.040.007	BRAKE PEDAL RETURN SPRING, R	1	
43	9.708.222	BRAKE PEDAL BOLT M8x1.25x222	1	
44	6.000.076	MASTER CYLINDER	1	
45	9.108.035	BOLT-WASHER M8x1.25x35	2	
46	7.020.036	THROTTLE PEDAL PAD	1	
47	7.020.037	BRAKER PEDAL PAD	1	
48	8.070.044	MASTER CYLINDER BRACKET	2	
49	8.010.220	ADJUSTING NOB	1	
50	8.010.221	ADJUSTING NOB BLOCK	1	
51	9.108.110	TILT STEERING BOLT	1	
52	7.010.003	TILT STEERING LOCKING BUSH	2	
53	8.010.222	COLLAR	1	

# FIG.18

## SUSPENSION ARM ASSY.



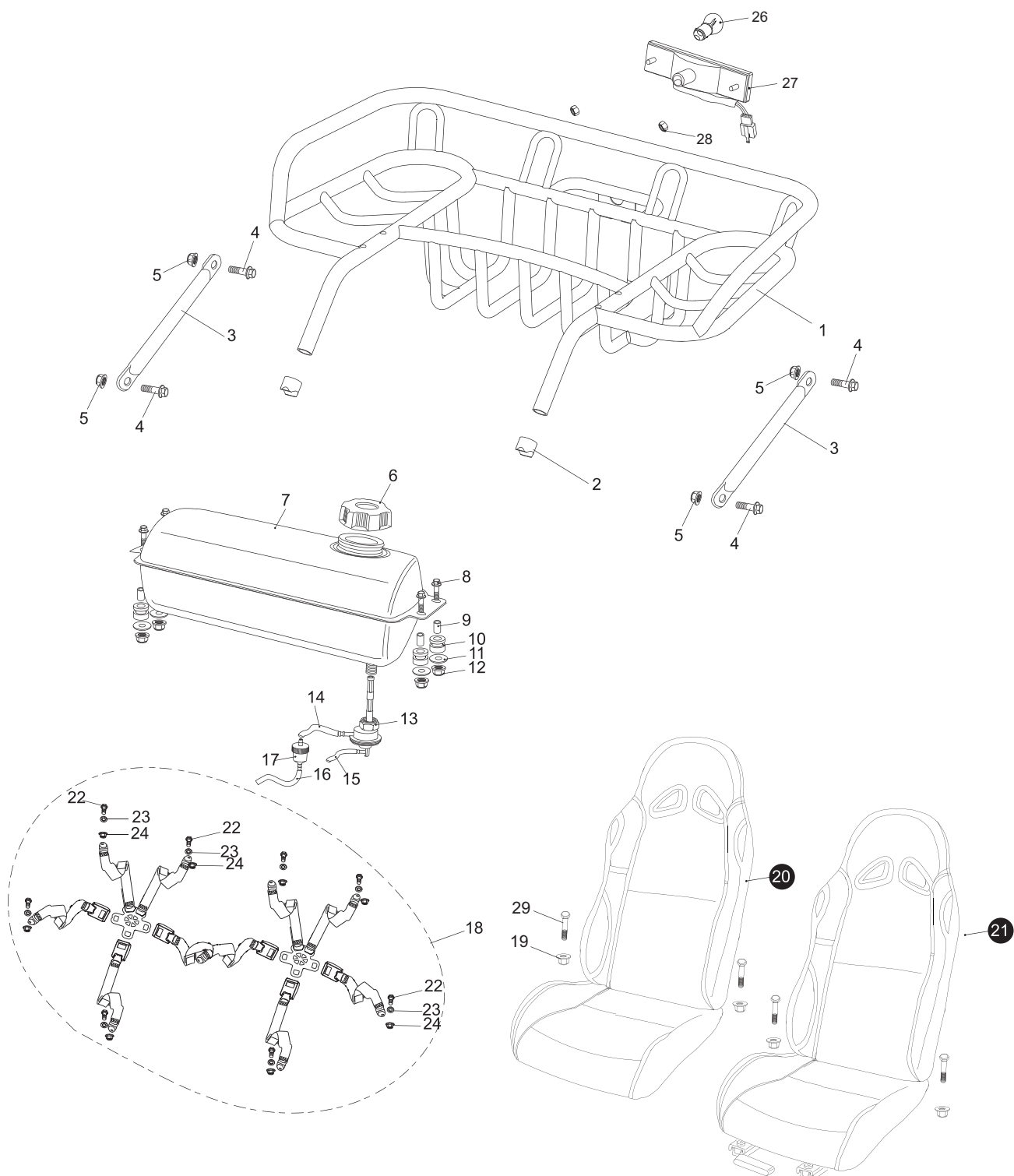
**SUSPENSION ARM ASSY.**

REF NO.	PART NO.	DESCRIPTION	REGD NO.	
1	2.000.028	STRUT AND SPINDLE SUPPORT, R	1	
2	9.108.105	FLANGE BOLT M8x1.25x105	2	
3	8.010.015	UPPER SUSPENSION ARM COLLAR	2	
4	7.010.003	UPPER SUSPENSION ARM BUSHING	4	
5	4.000.004	UPPER SUSPENSION ARM	2	
6	9.220.008	LOCKING FLANGE NUT. M8	2	
7	7.010.140	LOCKING FLANGE NUT. M12	4	
8	7.020.025	BALL HEAD DUST SEAL	4	
9	8.020.053	BALL HEAD SPACER	4	
10	2.000.027	STRUT AND SPINDLE SUPPORT, L	1	
11	9.908.014	BOLT STRAP M8x14	4	
12	8.010.014	LOWER SUSPENSION ARM COLLAR	4	
13	9.906.012	BOLT STRAP M6x12	12	
14	13-0901-03R	FRONT TIRE & WHEEL, RIGHT 19x7-8	1	
15	7.020.016	PAD SET. FR. BRAKE CALIPER	2	
16	6.000.028	FRONT BRAKE CALIPER. L	1	
17	8.010.054	FRONT DISC BRAKE	2	
18	9.040.002	DUST SEAL 47x25-7	2	
19	9.030.002	BEARING 6204-Z	2	
20	9.710.031	TIRE BOLT M10x1.25x31	8	
21	8.010.085B	FRONT WHEEL HUB	2	
22	9.030.010	BEARING 6202-Z	2	
23	9.220.010	LOCKING FLANGE NUT M10	8	
24	001-190708-00L	FRONT TIRE, LEFT 19x7-8	1	
	001-190708-00R	FRONT TIRE, RIGHT 19x7-8	1	
25	002-100080-03	FRONT WHEEL 8" STEEL BLACK	2	
26	9.220.010	LOCKING FLANGE NUT M10	16	
27	9.800.012	CASTLE NUT M12	2	
28	9.500.220	COTTER PIN $\Phi$ 2x20	2	
29	7.020.039	FR. HUB COVER.	2	
30	9.110.040	FLANGE BOLT M10x1.25x40	4	
31	6.000.095	FRONT BRAKE CALIPER. R	1	
32	6.000.325	CUSHION ASSY. FR L=325	2	
33	9.110.080	FLANGE BOLT M10x1.25x80	4	
34	8.020.034	LOWER SUSPENSION ARM DUST CAP	8	
35	7.010.002	LOWER SUSPENSION ARM BUSHING	8	
36	9.040.001	O-RING $\Phi$ 21.2x2.65	8	
37	4.000.023	LOWER SUSPENSION ARM ASSY.	2	
38	13-0901-03L	FRONT TIRE & WHEEL, LEFT 19X7-8	1	
39	8.010.140	ACORN NUT M12	2	



# FIG.19

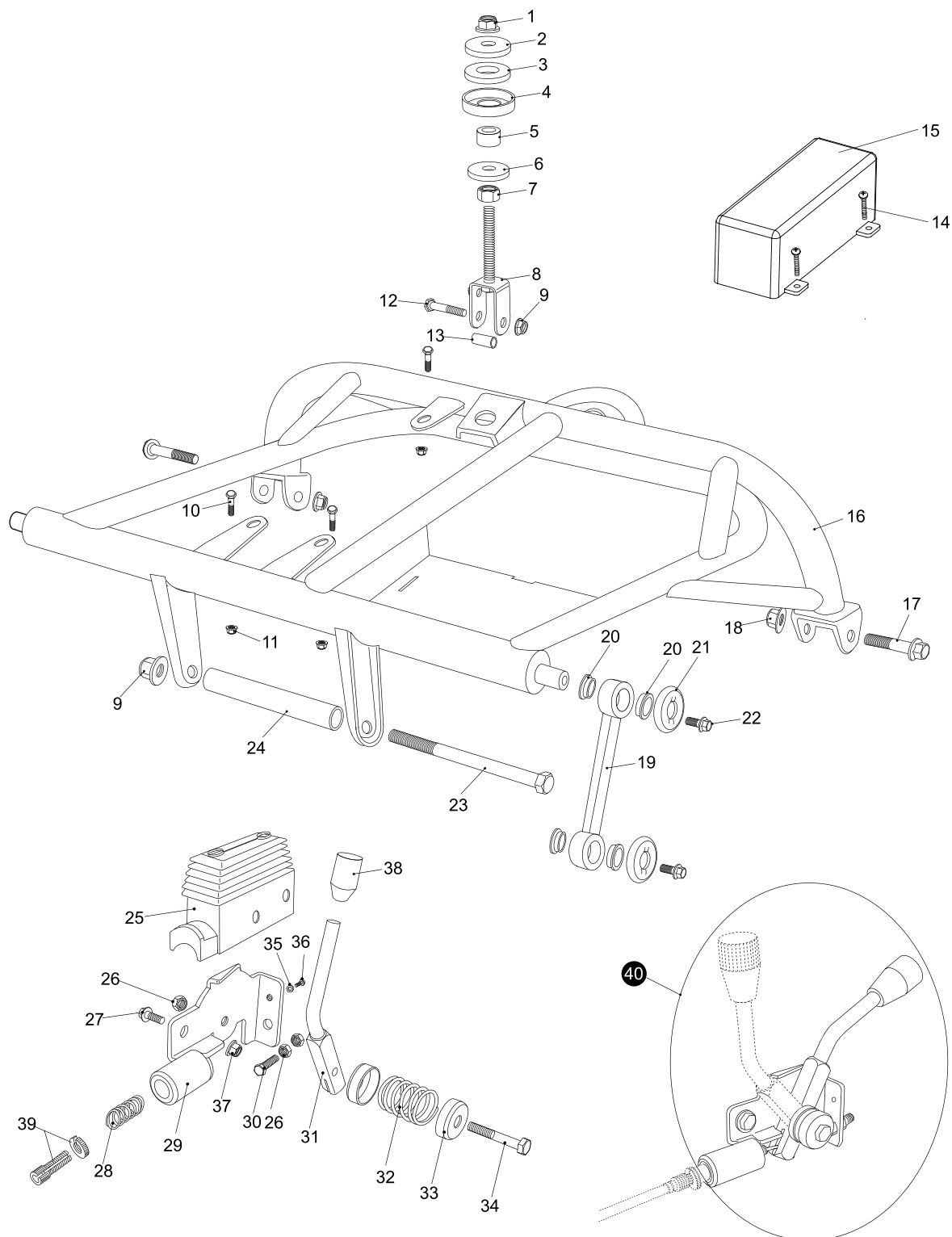
## REAR CARGO RACK/SEAT/BELT



<b>REAR CARGO RACK/SEAT/BELT</b>				
<b>REF NO.</b>	<b>PART NO.</b>	<b>DESCRIPTION</b>	<b>REGD NO.</b>	
1	2.000.061	REAR CARGO RACK (B.G.R.)	1	
2	7.010.017	TUBE SEAT Ø25	2	
3	8.080.051	RACK SUPPORT ARM (B.G.R.)	1	
4	9.108.020	FLANGE BOLT M8X1.25X20	4	
5	9.220.008	LOCKING FLANGE NUT. M8	4	
6	6.000.053	FUEL TANK CAP COMP.	1	
7	4.000.011	TUEL TANK COMP.	1	
8	9.108.025	FLANGE BOLT M8X1.25X25	4	
9	8.010.034	TANK COLLAR.	4	
10	7.020.005	RUBBER MOUNT	4	
11	9.300.008	FLAT WASHER Ø8	4	
12	9.210.008	NYLON LOCKING FLANGE NUT M8	6	
13	6.000.046	AUTO FUEL COCK ASSY.	1	
14	7.020.021	FUEL TUBE COMP. #1	1	
15	7.020.023	VACUUM TUBE COMP.	1	
16	7.020.022	VACUUM TUBE COMP. #2	1	
17	6.000.056	FILTER	1	
18	6.000.354	SAFETY BELT COMP.	1	
19	9.220.008	NUT M8	2	
20	13-0401-00L	SEAT COMP	1	
21	13-0401-00R	SEAT COMP.L	1	
22	9.700.001	SPECIAL BOLT, M7/16"x28	1	
23	9.700.002	WASHER BELT Ø12	9	
24	9.700.003	BELT NUT M7/16"	9	
25	6.000.379	SEAT RALL SET.	1	
26	9.090.005	TAIL LIGHT BULB. 21W/5W 12V	1	
27	6.000.144	TAIL LIGHT	1	
28	9.210.006	LOCKING NYLON NUT, M6	2	
29	9.900.840	BOLT SHARP M8X1.25X40	4	

# FIG.20

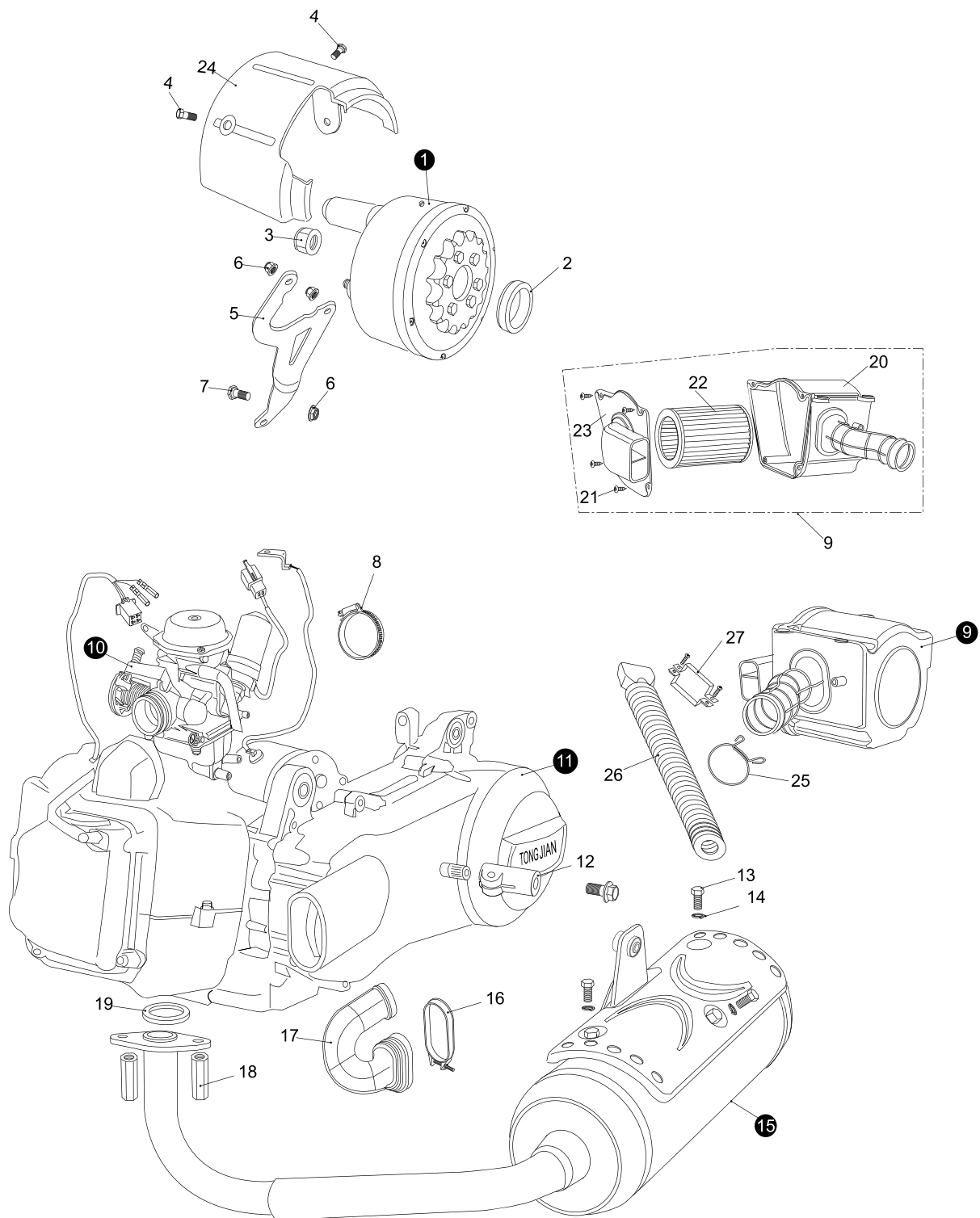
## REAR SWING ARM ASSY. UPPER



<b>REAR SWING ARM ASS'Y. UPPER</b>				
REF NO.	PART NO.	DESCRIPTION	REGD NO.	
1	9.220.012	LOCKING FLANGE NUT. M12	1	
2	8.010.042	WASHER. ENGINE MOUNT LINK	1	
3	7.020.001	CUSHION. ENGINE MOUNT LINK	1	
4	8.020.045	SPACER. ENGINE MOUNT LINK	1	
5	8.010.041	COLLAR. ENGINE MOUNT LINK	1	
6	9.300.012	WASHER. FLAT $\Phi$ 12	1	
7	9.200.012	NUT M12	1	
8	6.000.026	ENGINE MOUNT BOLT PLATE	1	
9	9.220.010	LOCKING FLANGE NUT. M10	1	
10	9.106.022	BOLT-WASHER M6x22	3	
11	9.210.008	LOCKING NYLON NUT. M6	3	
12	9.110.045	BOLT-WASHER M10x1.25x45	1	
13	8.010.076	COLLAR. ENGINE MOUNT BOLT PLATE	1	
14	9.600.630	SCREW. PAN M6x30	2	
15	7.010.084	COVER. ELECTRIC ASS'Y.	1	
16	2.000.062	REAR SWING ARM ASS'Y. UPPER	1	
17	9.112.060	BOLT-WASHER M12x1.25x60	2	
18	9.220.012	LOCKING FLANGE NUT. M12	2	
19	8.030.001	SWING ARM DOG BONE	2	
20	7.010.008	BUSH. CON' ROD	8	
21	8.020.013	SPACER. CON' ROD	4	
22	9.108.016	BOLT-WASHER M8x1.25x16	4	
23	9.710.195	BOLT-WASHER M10x1.25x195	1	
24	8.010.025	COLLAR. ENGINE MOUNT	1	
25	7.020.024	COVER. REVERSE LEVER	2	
26	9.210.008	LOCKING NYLON NUT. M8	6	
27	9.108.020	BOLT-WASHER M8x1.25x20	2	
28	8.040.004	SPRING. CABLE	2	
29	6.000.064	BRACKET. LEVER	2	
30	9.100.830	BOLT M8x30	1	
31	6.000.065	LEVER. REVERSE, PARKING BRAKE	2	
32	8.040.003	SPRING. LEVER	2	
33	8.020.082	SPACER. LEVER	4	
34	9.108.040	BOLT-WASHER M8x1.25x40	2	
35	9.300.005	WASHER FLAT $\Phi$ 5	2	
36	9.600.512	SCREW. PAN M5x12	2	
37	9.220.008	LOCKING FLANGE NUT. M8	4	
38	7.020.026	COVER. LEVER. GREEN / BLACK	2	
39	6.000.051	ROD ADJUSTING. CABLE	2	
40	6.000.042	PARKING BRAKE/REVERSE LEVER ASS'Y.	2	

# FIG.21

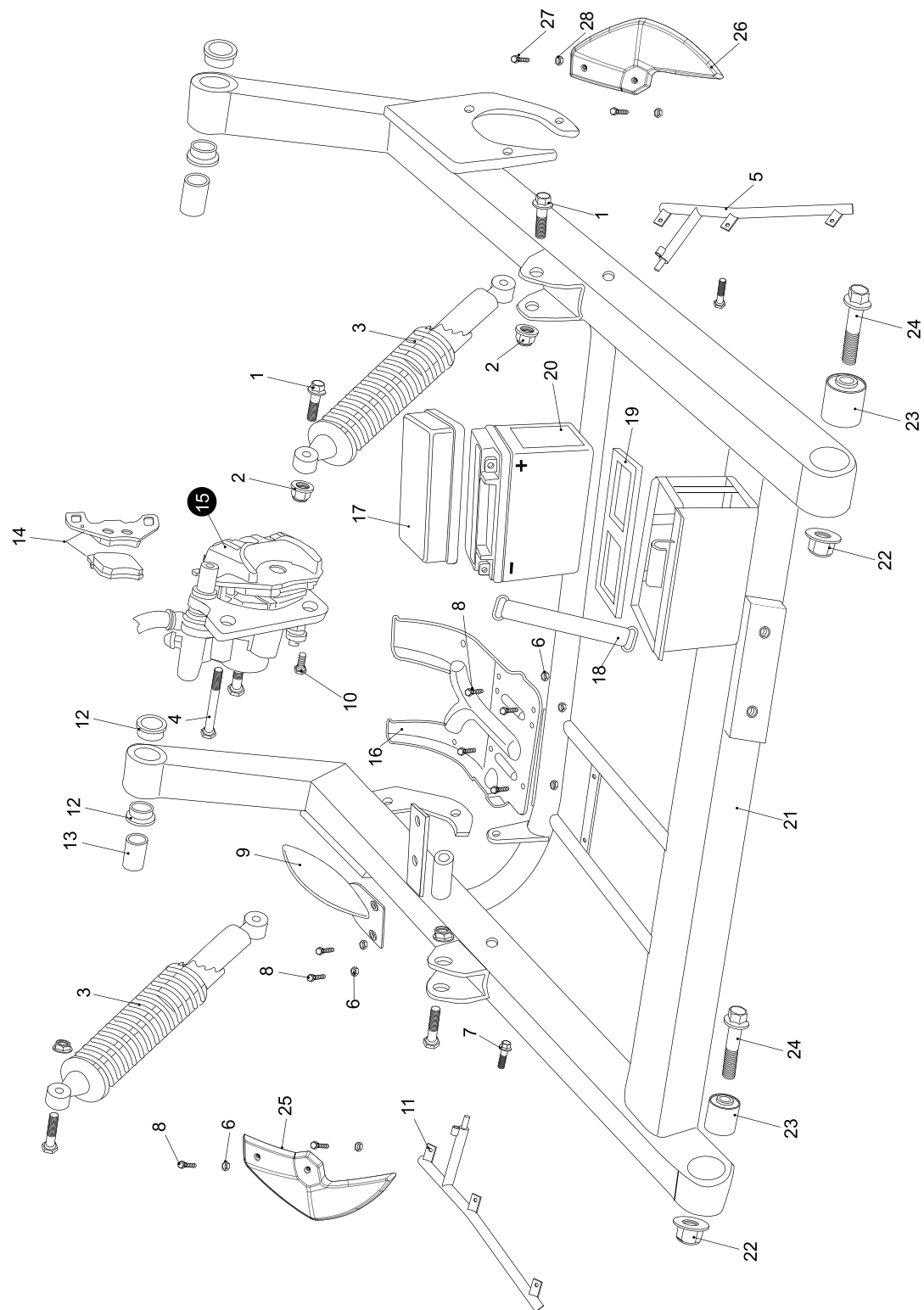
## ENGING/MUFFLER/AIR CLEANER



<b>ENGINE/MUFFLER/AIR CLEANER</b>				
<b>REF NO.</b>	<b>PART NO.</b>	<b>DESCRIPTION</b>	<b>REGD NO.</b>	
1	6.000.157	REVERSE ASSY.	1	
2	8.010.122	INTERNAL COLLAR REVERSE	1	
3	9.220.016	LOCKING FLANGE NUT M16	1	
4	9.106.012	FLANGE BOLT M6X12	2	
5	8.020.173	REVERSE BRACKET	1	
6	9.220.008	LOCKING FLANGE NUT M8	3	
7	9.908.040	BOLT STRAP, M8X1.25X40	1	
8	8.020.056	AIR CLEANER CLAMP	1	
9	4.000.018	AIR CLEANER ASSY.	1	
10	6.000.024	CARBURETOR	1	
11	2.000.009	ENGINE, 150CC	1	
12	8.030.037	MUFFLER RACK SUPPORT	1	
13	9.100.612	BOLT, M5X16	3	
14	9.400.006	LOCKING WASHER $\phi 6$	3	
15	6.000.074	MUFFLER COMP. EX	1	
16	8.020.055	BOOT CLAMP	1	
17	6.000.162	SIDE CASE BOOT	1	
18	9.040.027	MUFFLER JOINT NUT, M6	2	
19	9.040.005	EX. PIPE GASKET	1	
20	7.010.047	AIR CLEANER CASE COMP	1	
21	9.805.003	TAPPING SCREW, M5X16	4	
22	6.000.151	AIR CLEANER ELEMENT	1	
23	7.010.048	AIR CLEANER COVER	1	
24	7.010.033	CHAIN PROTECTOR, RR.	1	
25	8.040.013	AIR CLEANER CLIP	1	
26	7.010.057	AIR CLEANER DUCT	1	
27	8.020.176	AIR CLEANER CLAMP	1	
28	9.108.040	FLANGE BOLT, M8X1.25X40	1	

# FIG.22

## REAR SWING ARM

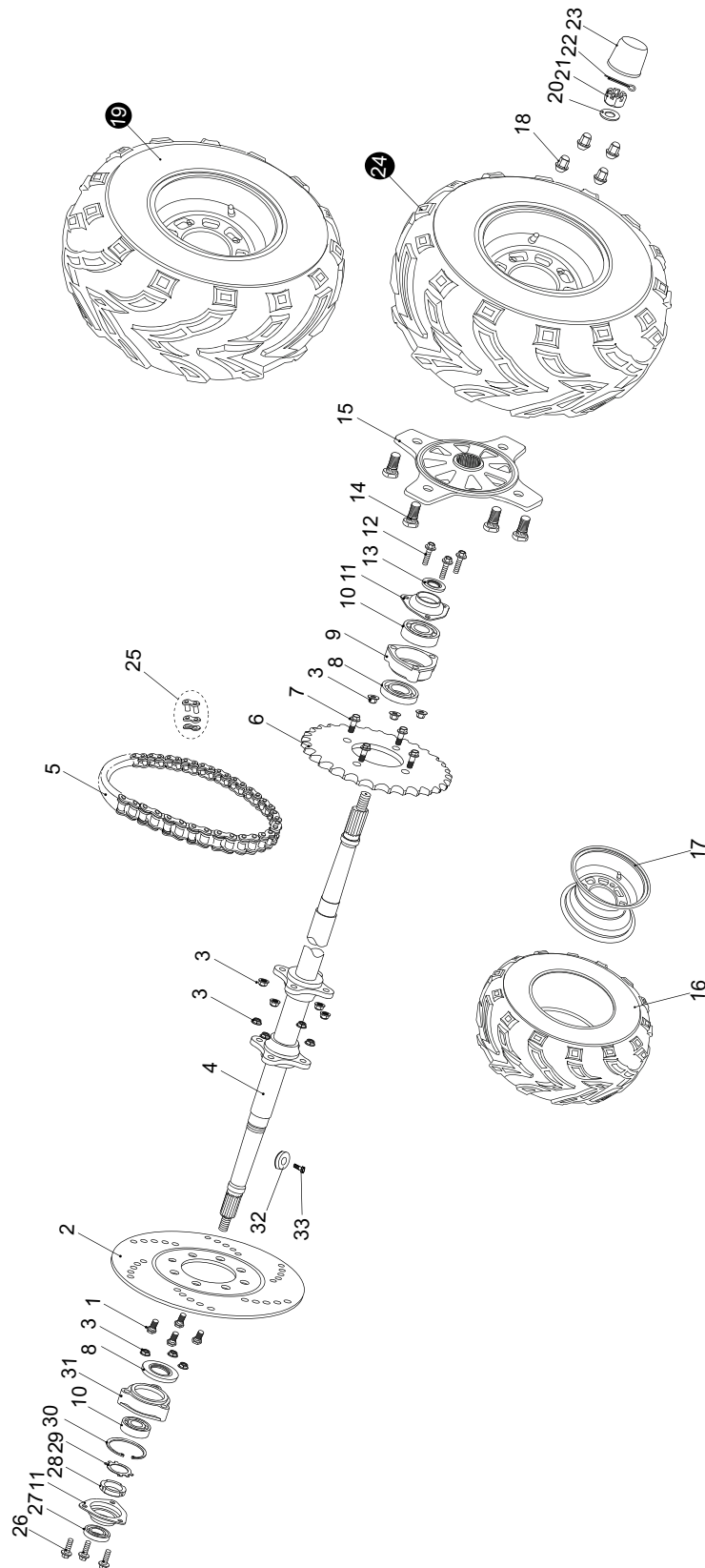


REAR SWING ARM				
REF NO.	PART NO.	DESCRIPTION	REGD NO.	
1	9.110.040	FLANGE BOLT M10x1.25x40	4	
2	9.220.010	LOCKING FLANGE NUT M10	4	
3	6.000.006	CUSHION ASSY. RR	2	
4	9.908.100	BOLT STRAP M8x1.25x100	1	
5	13-0601-00L	REAR FENDER BRACKET, L	1	
6	9.210.006	LOCKING NYLON NUT M6	12	
7	9.108.045	FLANGE BOLT M8x1.25x45	2	
8	003-060016-01	FLANGE BOLT M6x16	12	
9	7.010.031	DISC. RR COVER	1	
10	9.908.012	BOLT STRAP M8x1.25x12	1	
11	13-0601-00R	REAR FENDER BRACKET, R	1	
12	7.010.006	SWING ARM BUSHING	4	
13	8.010.028	SWING ARM COLLAR	2	
14	7.020.022	RR. BRAKE PAD SET	1	
15	6.000.229	CALIPER ASSY. RR	1	
16	7.010.032	CHAIN DISC GUARD	1	
17	7.010.028	BATTERY COVER	1	
18	7.020.023	BATTERY BAND	1	
19	7.020.020	BATTERY LOWER CUSHION	1	
20	6.000.085	BATTERY (YTX12-BS)	1	
21	2.000.042	RR. LOWER SWING ARM COMP.	1	
22	9.220.012	LOCKING FLANGE NUT M12	2	
23	7.020.008	SWING ARM CUSHION BUSHING	2	
24	9.112.060	FLANGE BOLT M12x1.25x60	2	
25	13-0204-00R	RR. FENDER, RH.	1	
26	13-0204-00L	RR. FENDER, LH.	1	
27	003-060016-00	BOLT, M6X16	4	
28	004-0600-00	NUT, M6	4	



# FIG.23

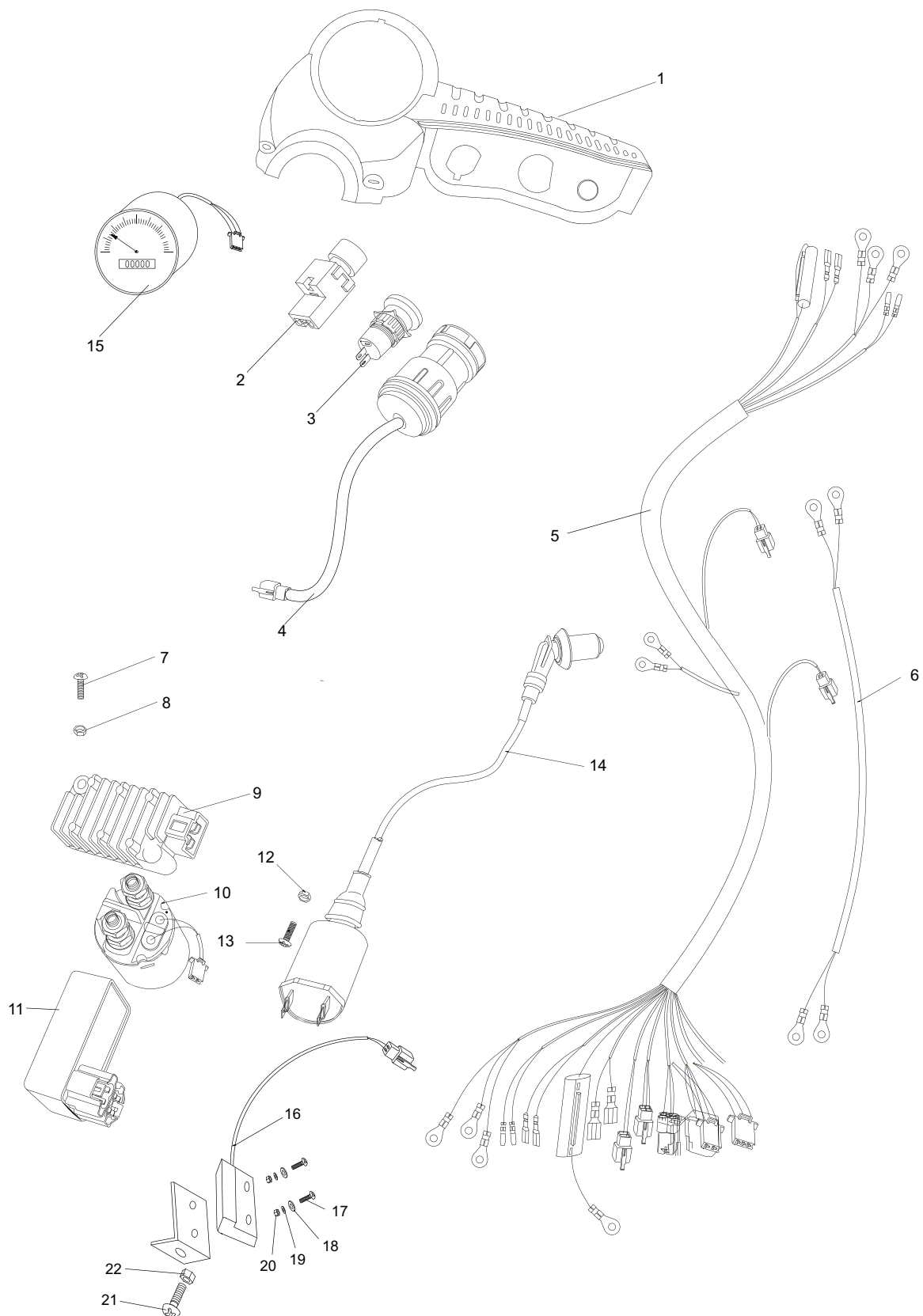
## REAR HOUSING



REAR HOUSING				
REF NO.	PART NO.	DESCRIPTION	REGD NO.	
1	9.108.022	BOLT-WASHER M8x1.25x22	4	
2	8.010.053	DISC. RR. BRAKE	1	
3	9.220.008	LOCK FLANGE NUT. M8	14	
4	8.010.057B	REAR AXLE	1	
5	9.070.002	CHAIN O-RING DRIVE.	1	
6	8.010.077	REAR SPROCKET	1	
7	9.108.027	BOLT-WASHER M8x1.25x27	4	
8	9.040.006	DUST SEAL 50X34-7	2	
9	8.030.008	COMP. HOUSING RR. AXLE BRG	2	
10	9.030.006	BEARING 6206	2	
11	8.020.028	BEARING BASE	2	
12	9.108.040	BOLT-WASHER M8x1.25x40	6	
13	9.040.007	DUST SEAL 42X30-7	2	
14	9.710.031	BOLT. TIRE M10x1.25x31	8	
15	8.010.089B	HUB. REAR AXLE	2	
16	001-201010-00	TIRE. RR 21x10-10	2	
17	002-100100-03	RIM. RR 10" BLACK	2	
18	8.010.118	LUG NUT. CAP M10	8	
19	13-0902-03R	REAR. WHEEL ASSY. R	1	
20	9.700.016	SPACER. RR. WHEEL 16	2	
21	9.800.016	CASTLE NUT. M16	2	
22	9.500.430	COTTER PIN. 4X30	2	
23	7.020.039	COVER. RR. HUB	2	
24	13-0902-03L	REAR TIRE & WHEEL	1	
25	6.000.149	MASTER LINK. CHAIN	1	
26	9.108.045	FLANGE BOLT M8X1.25X45	3	
27	9.040.008	DUST SEAL 42X28-7	1	
28	9.900.030	ROUND NUT M30X1.5	1	
29	8.020.181	KEEPER	1	
30	9.700.300	CIRCLIP $\Phi$ 62	1	
31	8.030.033	AXLE BRG HOUSING COMP.RR	1	
32	12.025.024	MAGNETIC CONTACT	1	
33	12.025.025	EYE BOLT, M3X6	1	

# FIG.24

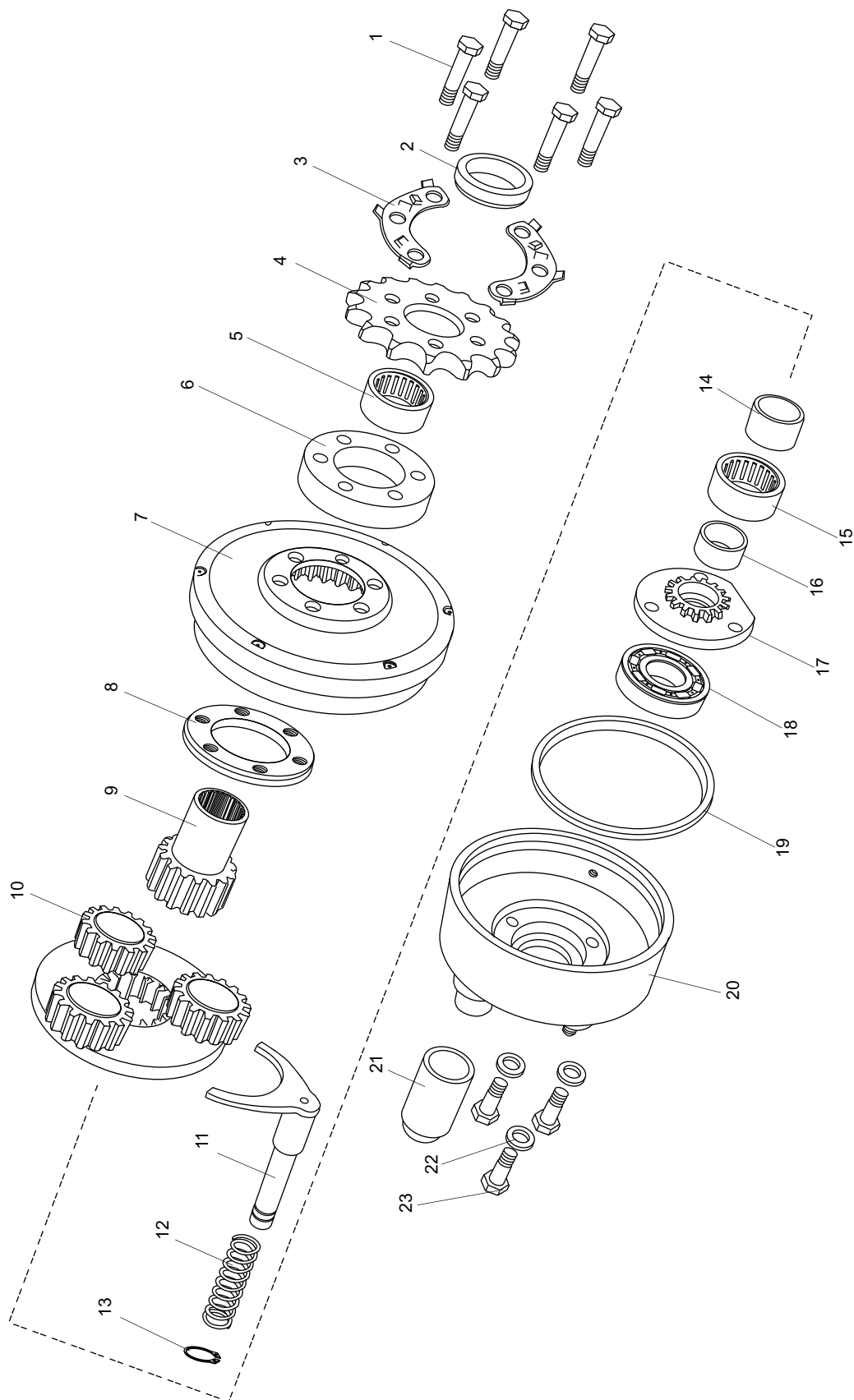
## WIRE HARNESS/ELECTRICAL



<b>WIRE HARNESS/ELECTRICAL</b>				
<b>REF NO.</b>	<b>PART NO.</b>	<b>DESCRIPTION</b>	<b>REGD NO.</b>	
1	13-0205-03	SWITCH PANEL COVER	1	
2	13-0302-00	IGNITION START SWITCH	1	
3	6.000.159	ENGINE STOP BUTTON	1	
4	13-0301-00	KEY & HEADLIGHT SWITCH	1	
5	13-0303-00	WIRE HARNESS. 6.000.380-GTS	1	
6	6.000.204	SOCKET COMP	1	
7	9.100.620	BOLT M6x20	2	
8	9.210.006	NYLON LOCKING NUT M6	2	
9	6.000.124-GTS	REGULATE RECTIFIER COMP.	1	
10	6.000.035	STARTING RELAY	1	
11	6.000.267	C.D.I. UNIT COMP.	1	
12	9.210.005	NYLON LOCKING NUT M5	1	
13	9.600.525	ROUND HEAD BOLT M5x25	1	
14	6.000.025	IGNITION COIL COMP.	1	
15	12.026.017	SPEEDOMETER	1	
16	12.026.023	SPEEDOMETER SENSOR	1	
17	12.026.024	SCREW, M3X10 (GB818)	1	
18	12.026.025	SPRING WASHER, 3 (GB93)	1	
19	12.026.026	FLAT WASHER,3 (GB97.1)	1	
20	12.026.027	NUT, M3 (GB6170)	1	
21	9.100.005	BOLT, M6X20 (GB5787)	1	
22	9.200.006	NUT, M6 (GB6187)	1	

# FIG.25

## REVERSE ASSY.



<b>REVERSE ASSY.</b>				
<b>REF NO.</b>	<b>PART NO.</b>	<b>DESCRIPTION</b>	<b>REGD NO.</b>	
1	9.100.625	BOLT M6x25	6	
2	8.010.122	INTERNAL COLLAR	1	
3	8.020.167	KEEPER	2	
4	8.010.123	DRIVE SPROCKET	1	
5	9.030.007	NEEDLE BEARING 26x35x20	1	
6	8.010.119	BEARING FLANGE PLATE	1	
7	8.010.169	GEAR CASE. L	1	
8	8.010.170	GEAR CASE FLANGE PLATE	1	
9	8.010.124	DRIVE GEAR	1	
10	6.000.222	COUNTER GEAR SHAFT COMP	1	
11	8.010.125	GEAR SHIFT YOKE	1	
12	8.040.012	GEAR SHIFTING YOKE SPRING	1	
13	9.700.112	CIRCLIP $\Phi 12$	1	
14	8.010.121	DRIVE GEAR BUSHING	1	
15	9.030.008	NEEDLE BEARING 22x30x14	1	
16	8.010.126	BUSHING. DRIVE GEAR	1	
17	8.030.029	GEAR SEAT	1	
18	9.030.003	BEARING 6003 DDU	1	
19	7.020.055	RUBBER OIL SEAL	1	
20	8.030.028	GEAR CASE. R	1	
21	8.010.127	SHIFTING YOKE COVER	1	
22	9.030.008	WASHER $\Phi 8$	3	
23	9.100.821	SCREW PAN M8x21	3	