



Parts Manual

READ THIS MANUAL CAREFULLY,
IT CONTAINS IMPORTANT SAFETY INFORMATION.

2010-2011 *GTS150*

10th letter in VIN: A-B

Dune Buggy

MINIMUM
RECOMMENDED
OPERATOR AGE: **16**



FOR OFF-ROAD USE ONLY

This vehicle is designed and manufactured for off-road use only.

USA only:

It does not conform to Federal Motor Vehicle Safety Standards, and in regards to operation on public streets, roads, or highways is illegal.

PERIODICAL CHECK AND SERVICES

The maintenance intervals in the following table are based upon average driving conditions. Driving in unusually dusty areas, require more frequent servicing.

Items \ Time of service	Initial service (first week)	Monthly	Quarterly	Yearly
Tire pressure/wear	I	I		
Brake performance	I	I		
Tightness of screws	I	I		
Air cleaner			C	I
Carburetor	I	A		C
Spark plug			C, A	
Drive chain	I	I	C, A, L	
Brake oil			I	
Replace gearbox oil		I	R	
Chassis		C, I	L	
Fuel switch/fuel tank		I		C
Battery			I	
Valve clearance of engine			A	

A: adjust **C:** clean **I:** inspect, clean or replace if necessary. **L:** lubricate **R:** replace

WIRING DIAGRAM

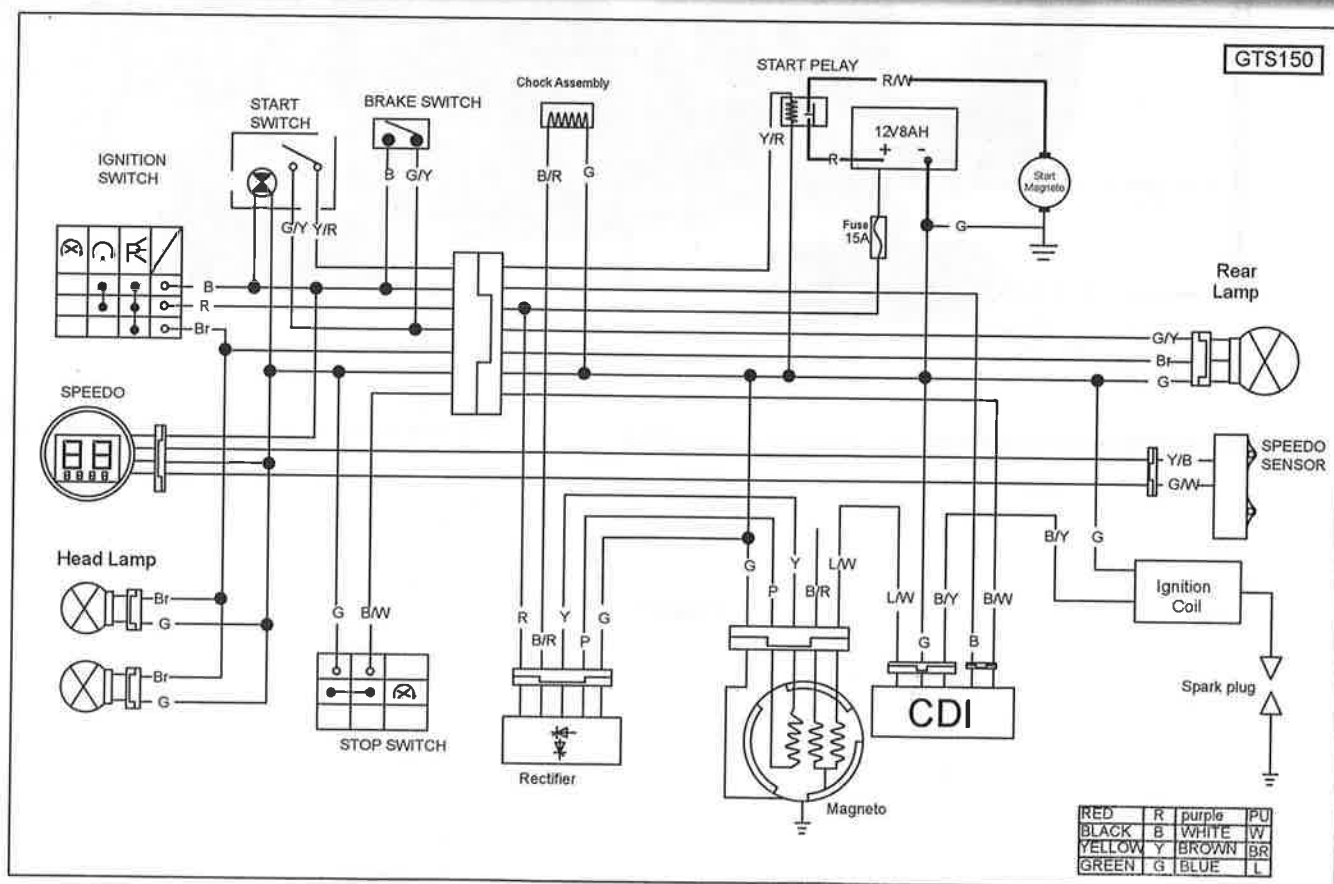
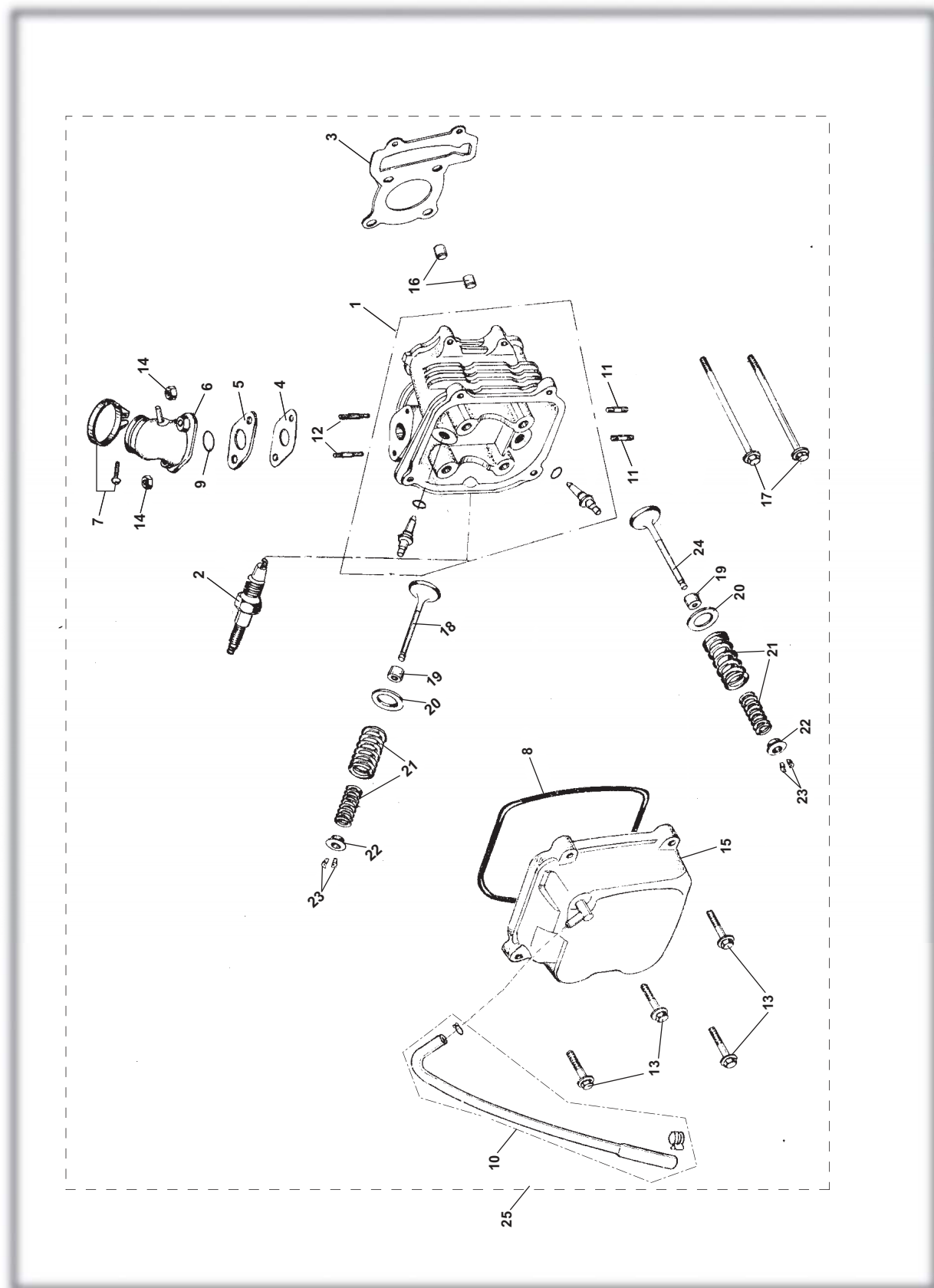
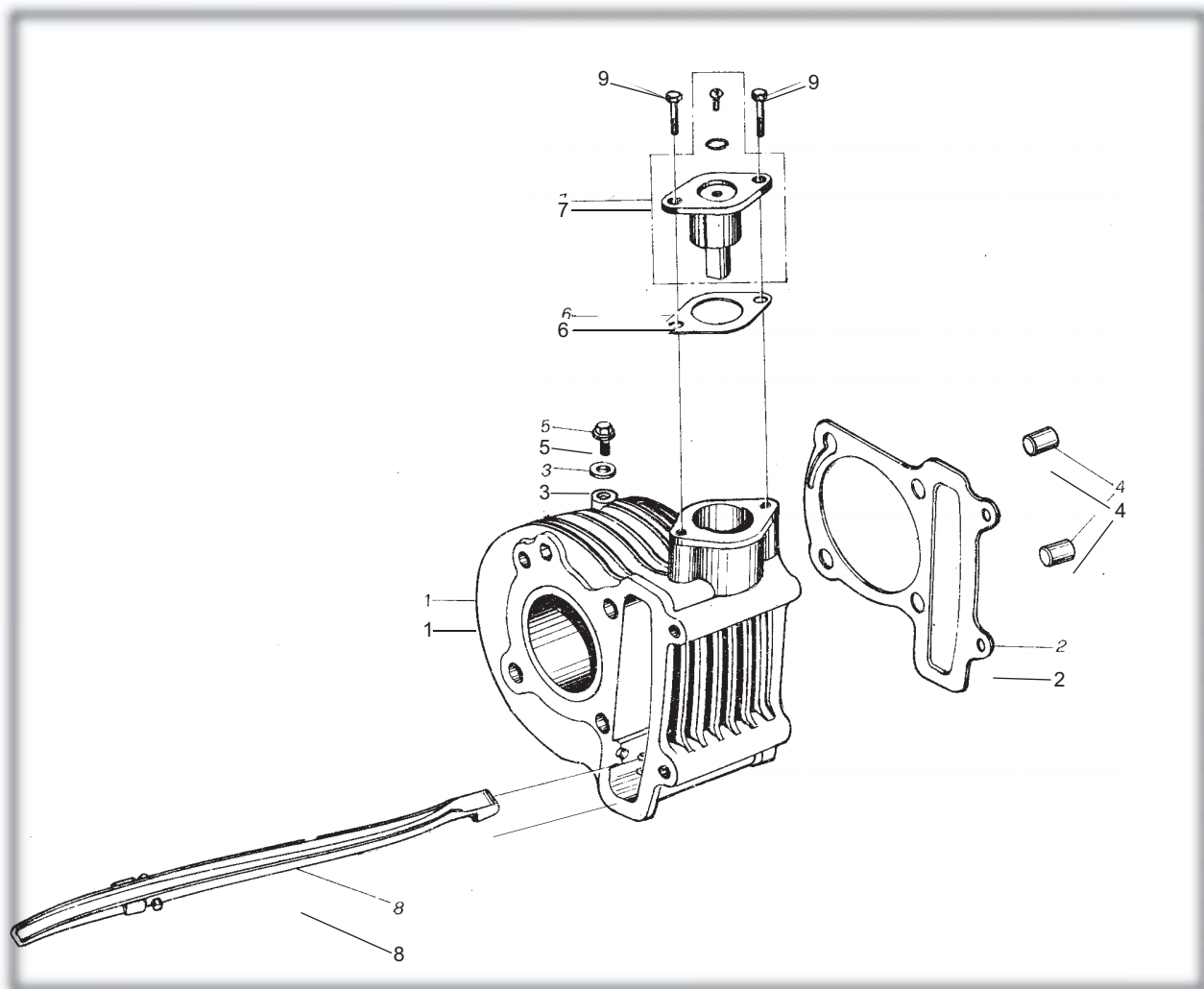


FIG.1

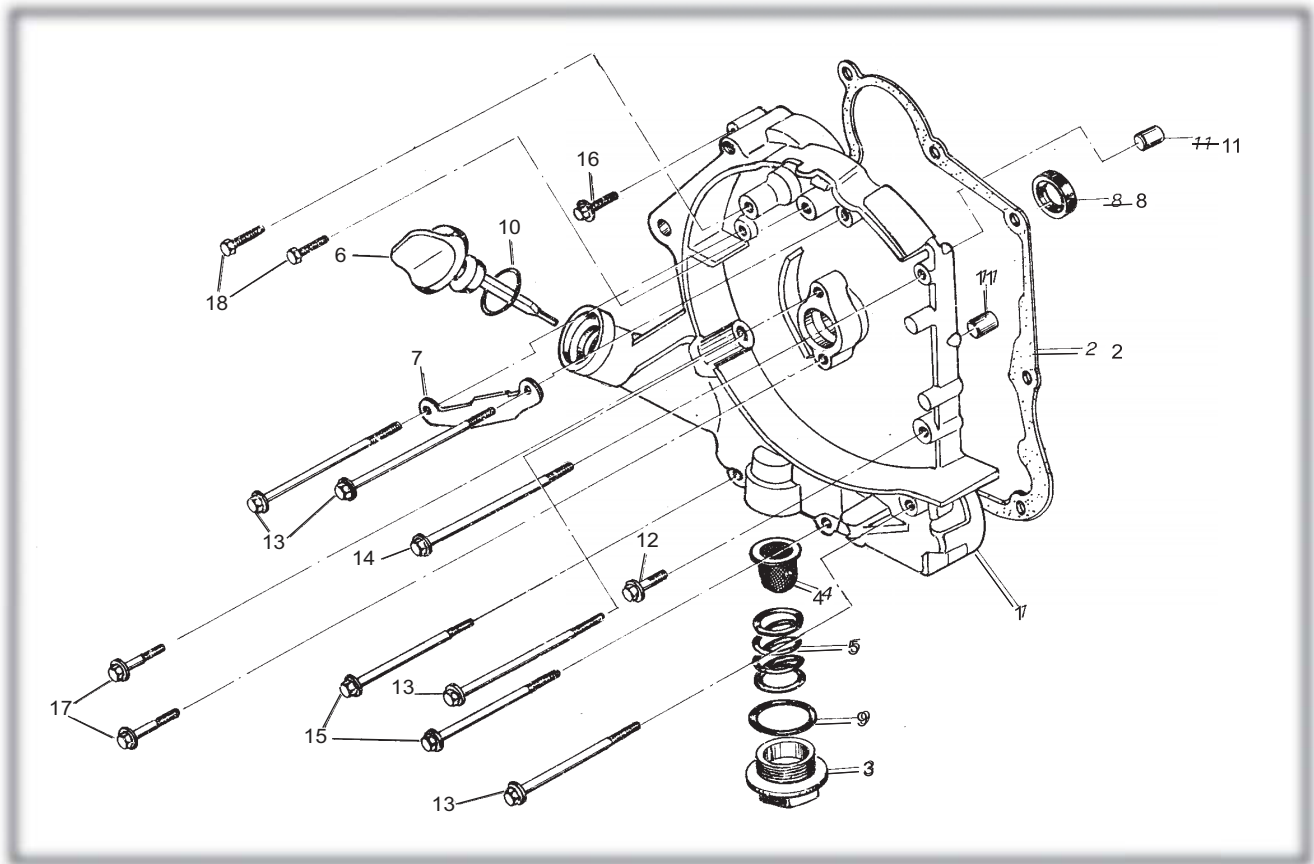
CYLINDER HEAD ASSY.



[illegible]

CYLINDER ASSY.

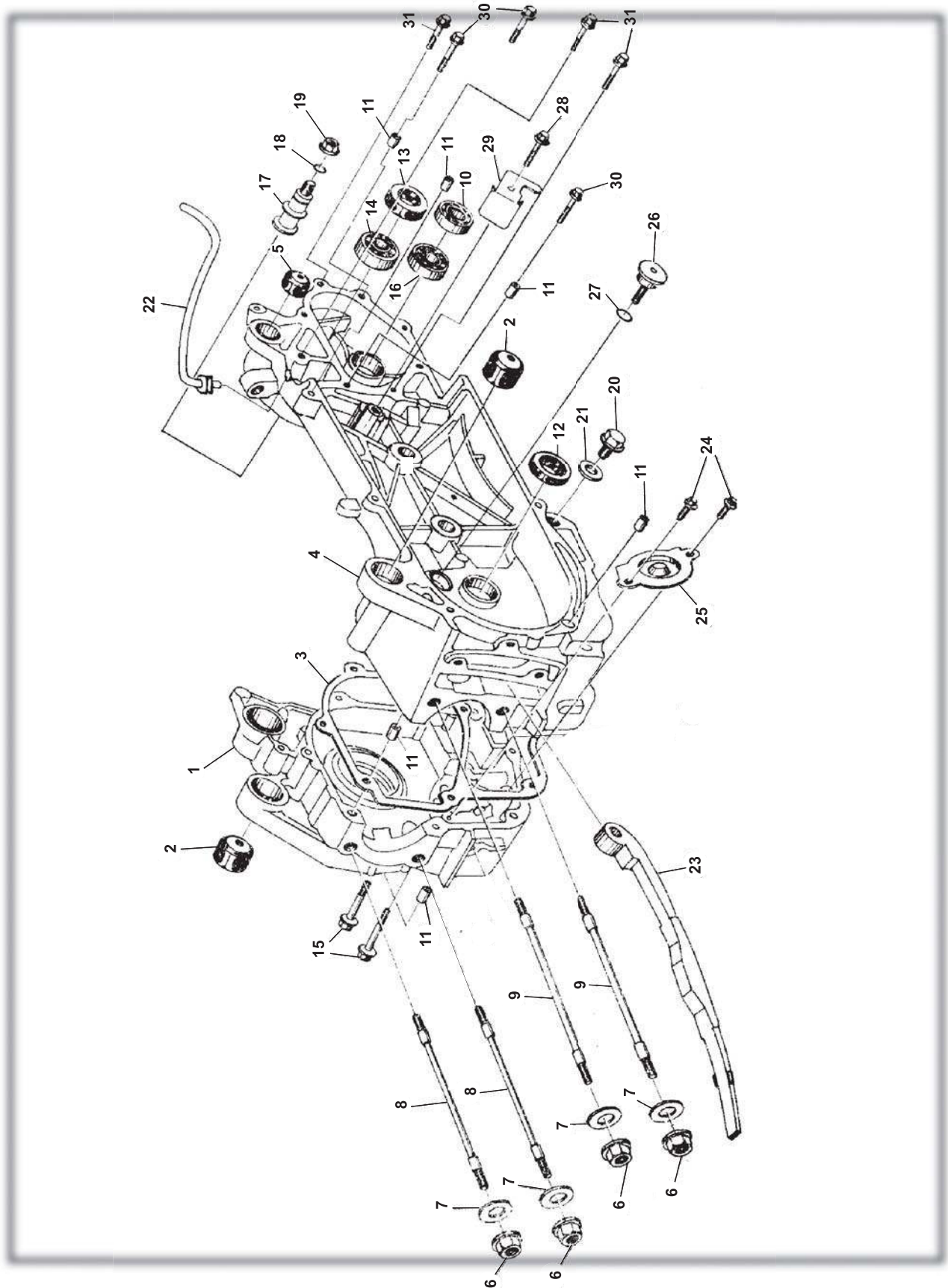
CYLINDER ASSY.				
REF NO.	PART NO.	DESCRIPTION	REGD NO.	
1	M150-1002200	CYLINDER COMP.	1	
2	M150-3050351	CYLINDER GASKET	1	
3	90442-06000-KAT	WASHER SEALING 6	1	
4	M150-1001007	DOWEL PIN 10X16	2	
5	96001-06012-KAT	FLANGE BOLT M6X12-ZN. D	1	
6	M150-3050347	GASKET TENSIONER LIFTER	1	
7	M150-1002100	TENSIONER LIFTER ASSY.	1	
8	M150-1002300	CAM CHAIN GUIDE COMP.	1	
9	96001-06020-KAT	FLANGE BOLT 6X20	2	

CRANKCASE ASSY. (1)**CRANKCASE ASSY.(1)**

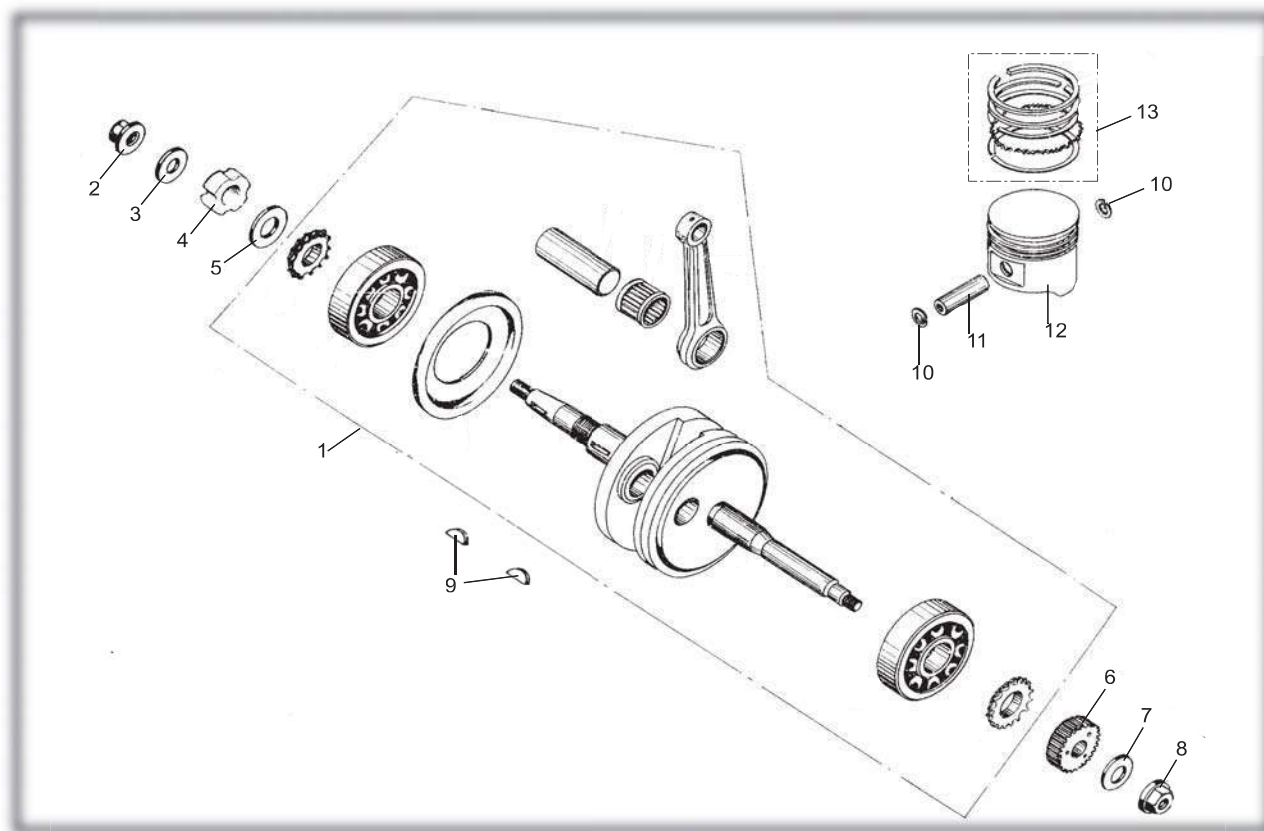
REF NO.	PART NO.	DESCRIPTION	REGD NO.	
1	M150-1003101-B	R CRANKCASE COVER COMP.	1	
2	M150-3050350	CRANKCASE COVER GASKET	1	
3	M150-1003104	CAP TAPPET ADJUSTING HOLE	1	
4	M150-1003120	OIL FILTING SCREEN	1	
5	M150-1003102	OIL FILTING SCREEN SPRING	1	
6	M150-1003105	OIL LEVEL GAUGE	1	
7	M150-1003006	AC GENERATOR CORD CLAMPER	1	
8	M150-1003110	OIL SEAL 19.8X30X5	1	
9	M150-1003103	O-RING 30.8X3	1	
10	M150-1003307	O-RING 18X3	1	
11	M150-1003005	DOWEL PIN 8X14	2	
12	96001-06032-KAT	FLANGE BOLT M6X28	1	
13	M150-1003012	FLANGE BOLT M6X95	4	
14	M150-1003007	FLANGE BOLT M6X100	1	
15	M150-1003008	FLANGE BOLT M6X110	2	
16	M150-1003034	FLANGE BOLT M6X35	1	
17	M150-1003106	FLANGE BOLT M6X20	2	
18	92101-05012-OH	HEX BOLT M5X12-ZN.D	2	

FIG.4

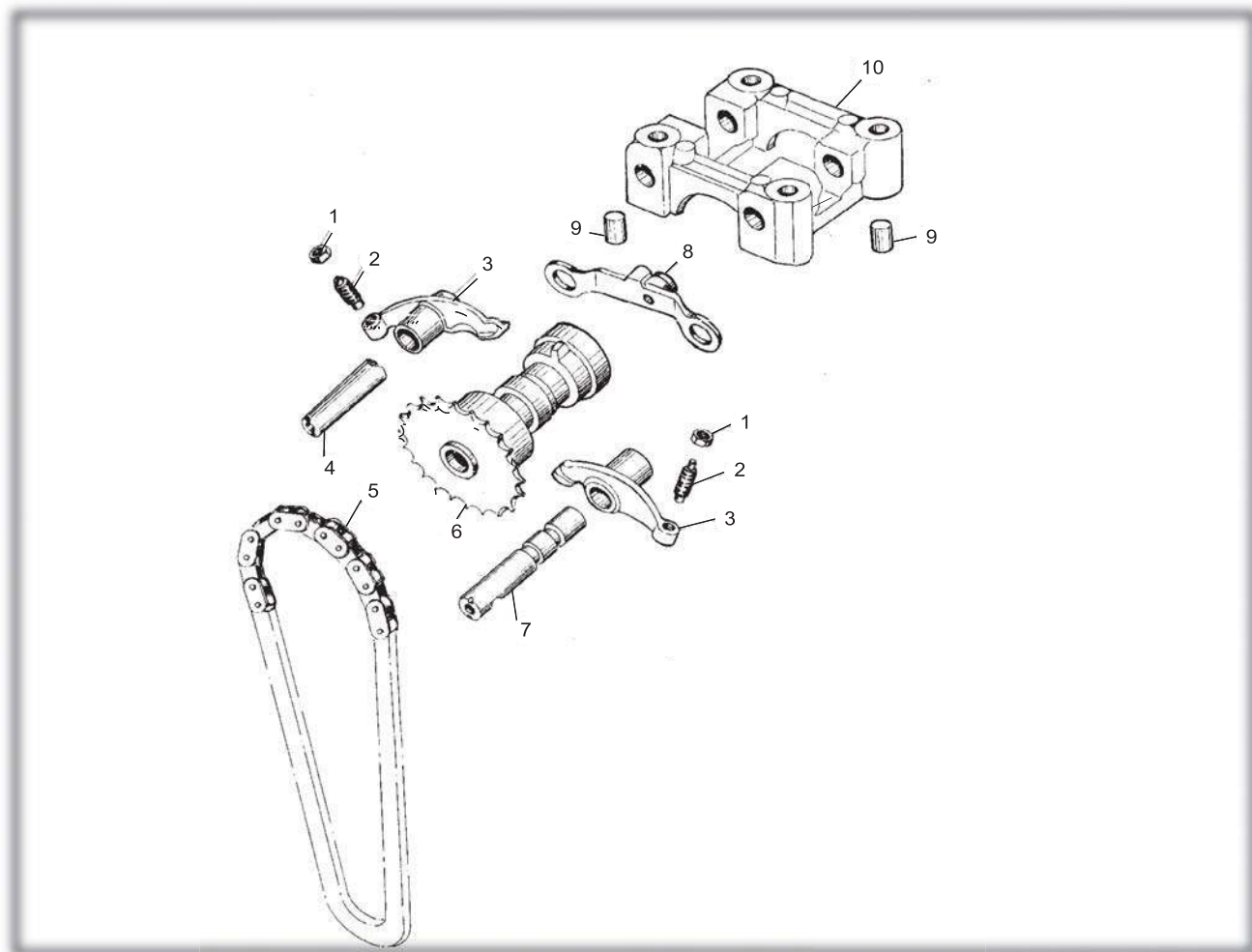
CRANKCASE ASSY. (2)



[illegible]

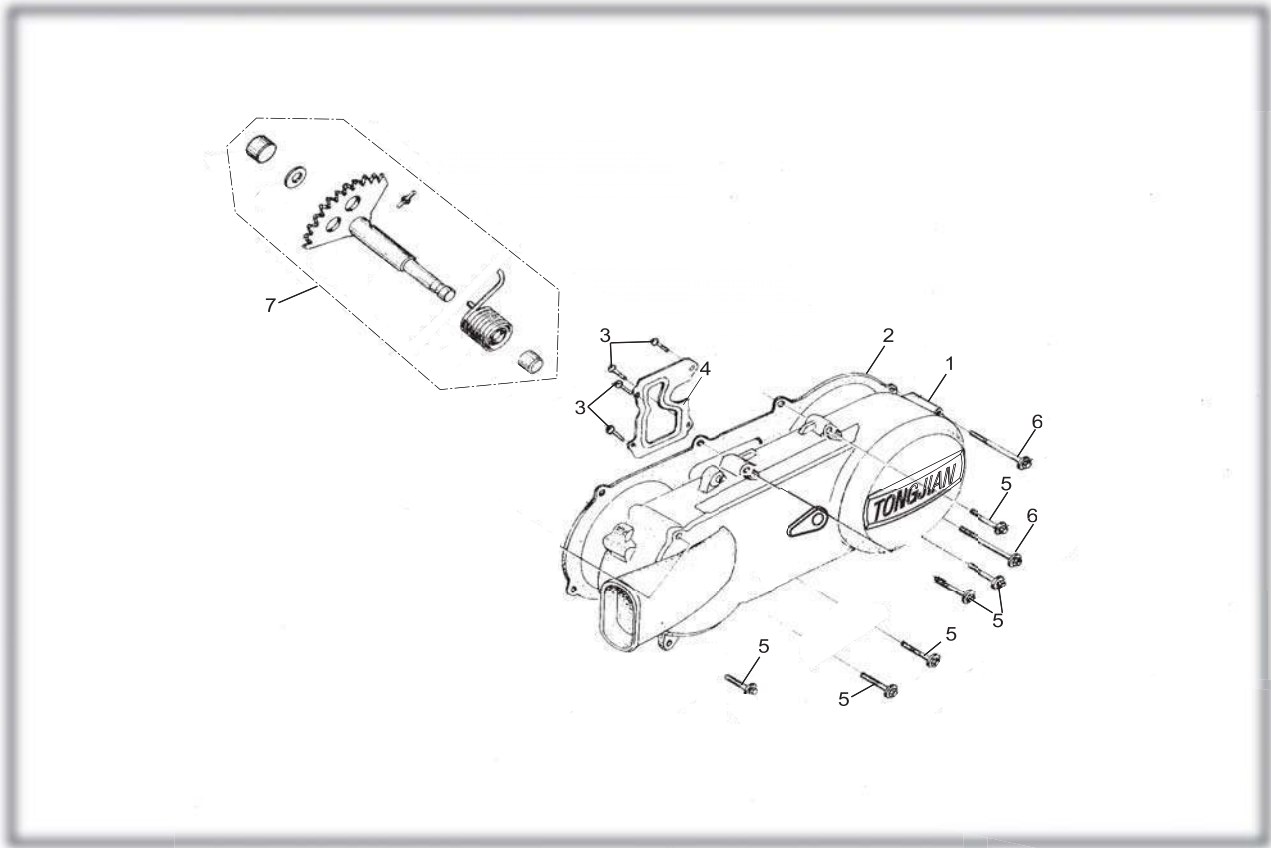
CRANKSHAFT CON'ROD & PISTON ASSY.**CRANKSHAFT CON'ROD & PISTON ASSY.**

REF NO.	PART NO.	DESCRIPTION	REGD NO.	
1	M150-1004100	CRANKSHAFT & CONROD ASSY.	1	
2	M150-1004007	NUT M12X1.25	1	
3	M150-1004011	WASHER 12-149HV 12-140HV	1	
4	M150-1004009	SPANNER NUT (LEFT HAND THREAD)	1	
5	M150-1004013	WASHER	1	
6	M150-1004012	KICK DRIVE GEAR	1	
7	M150-1040005	WASHER $\Phi 12$	1	
8	M150-1004008	NUT M12	1	
9	M150-1004002	WOODRUFF KEY	2	
10	M150-1004003	PISTON PIN CLIP	2	
11	M150-1004006	PISTON PIN	1	
12	M150-1004001	PISTON	1	
13	M150-1004200	PISTON RING SET	1	

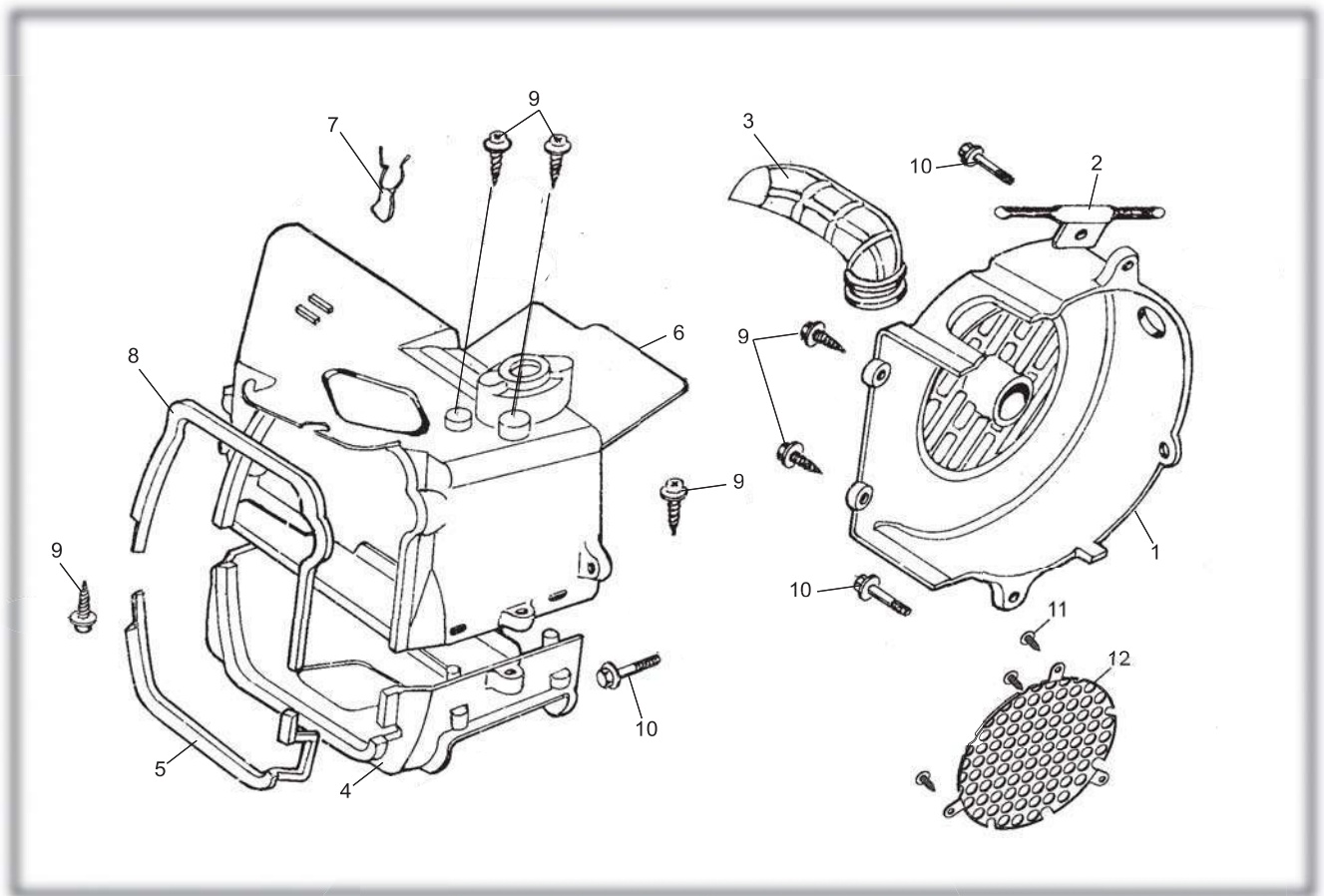
CAMSHAFT ASSY.**CAMSHAFT ASSY.**

REF NO.	PART NO.	DESCRIPTION	REGD NO.	
1	M150-1005004	TAPPET ADJUSTING NUT	2	
2	M150-1005003	TAPPET ADJUSTING SCREW	2	
3	M150-1005002	VALVE ROCKER ARM	2	
4	M150-1005005	EX ROCKER ARM SHAFT	1	
5	M150-1005400	CAMSHAFT CHAIN	1	
6	M150-1005300-N	CAMSHAFT COMP. 16T	1	
7	M150-1005200	IN ROCK ARM SHAFT COMP.	1	
8	M150-1005100	STOPPER PLATE COMP.	1	
9	M150-1001007	DOWEL PIN 10X16	2	
10	M150-1005001	CAMSHAFT HOLDER	1	

LEFT COVER ASSY.

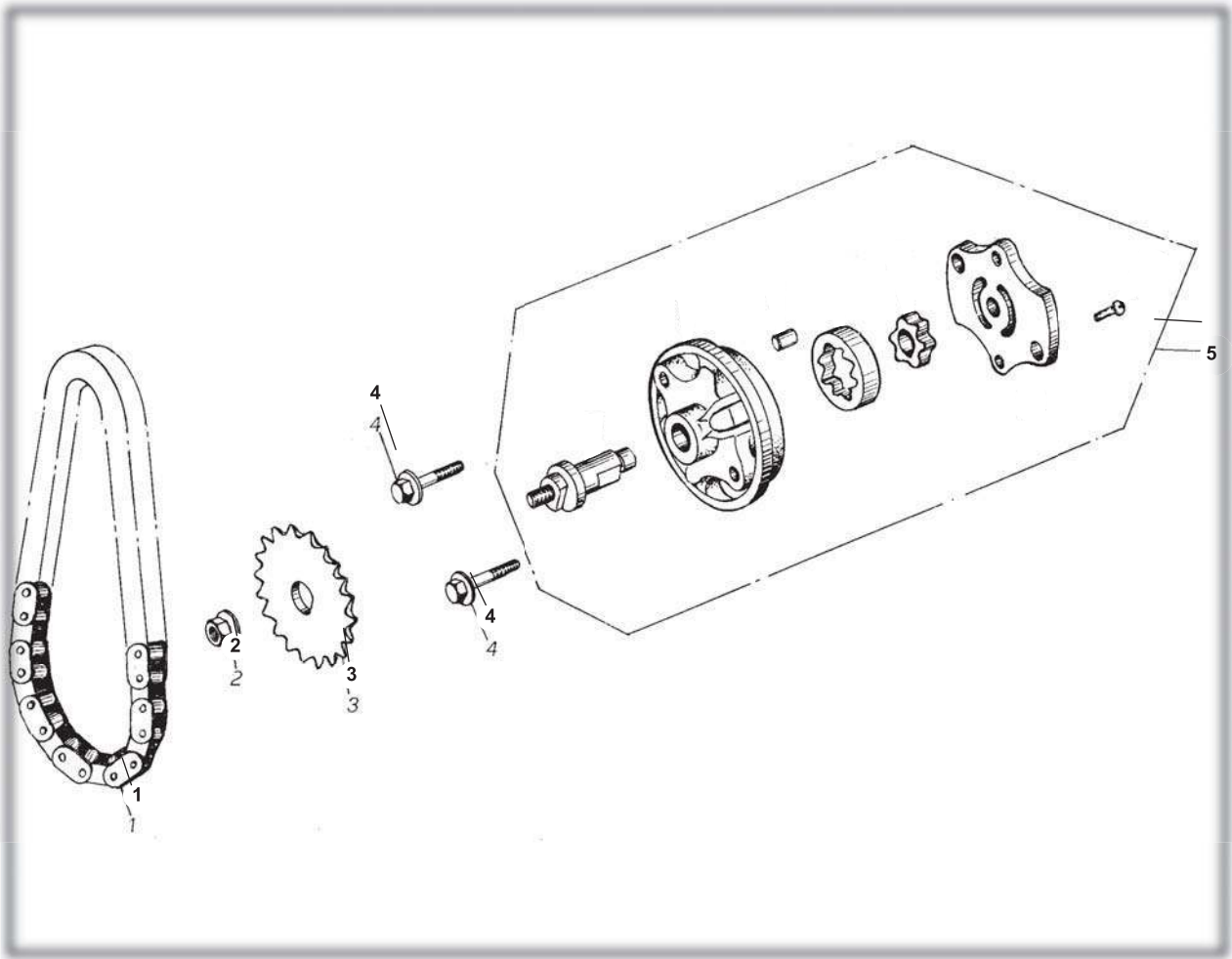


LEFT COVER ASSY.				
REF NO.	PART NO.	DESCRIPTION	REGD NO.	
1	M150-1008101	COVER L	1	
2	M150-1008005	L COVER GASKET	1	
3	93903-00428-KAT	TAPPING SCREW ST4.2X8-F-H	4	
4	M150-1008102	L COVER PLATE	1	
5	M150-1003034	FLANGE BOLT M6X40	6	
6	M150-1008006	FLANGE BOLT M6X65	2	
7	M150-1008200	KICK STARTER ASSY. SPINDLE COMP.	1	

FAN COVER AND SHROUD ASSY.**FAN COVER AND SHROUD ASSY.**

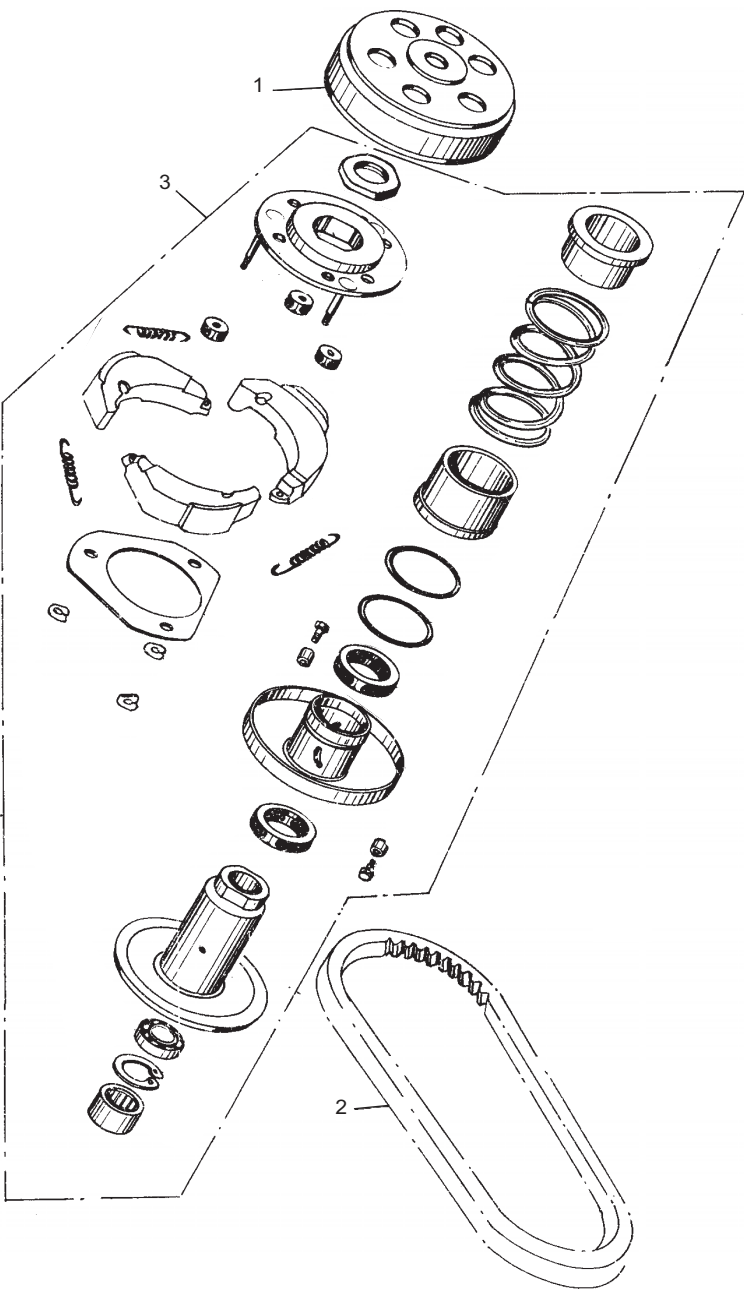
REF NO.	PART NO.	DESCRIPTION	REGD NO.	
1	M150-1009410	FAN COVER COMP.	1	
2	M150-1009002	STARTER CABLE CLAMPER	1	
3	M150-1009401	FAN SHROUD COOLING DUCT	1	
4	M150-1009301	LOWER SHROUD	1	
5	M150-1009302	LOWER SHROUD SEAL	1	
6	M150-1009110	UPPER SHROUD COMP.	1	
7	M150-1009103	HIGH TENSION CORD CLIP	1	
8	M150-1009102	UPPER SHROUD SEAL	1	
9	M150-1009402	SCREW ST4.8X16-F	6	
10	M150-1003075	BOLT M6X25	3	
11	9.805.003	SCREW ST3.5X13-F	3	
12	8.020.179	DUST COVER	1	

OIL PUMP ASSY.



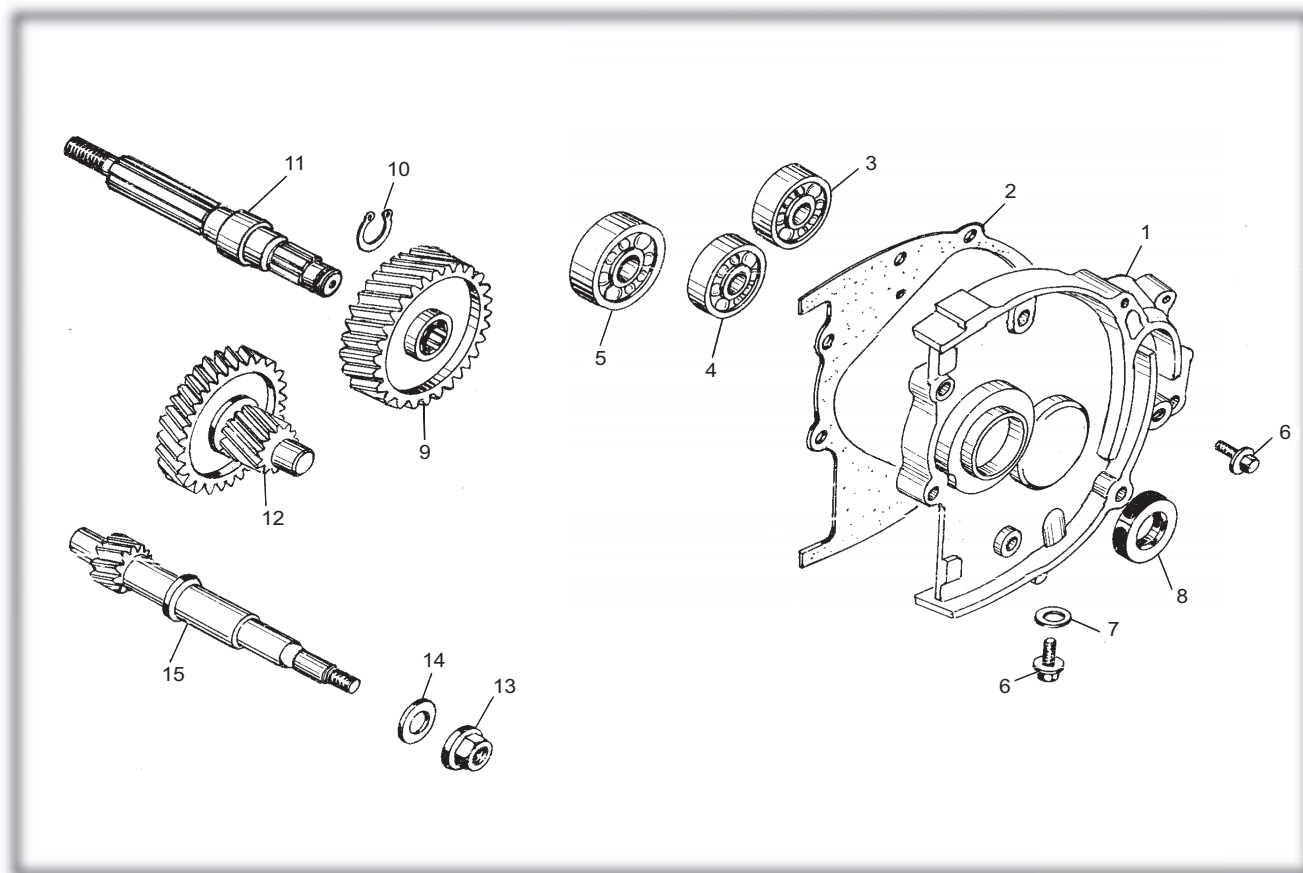
OIL PUMP ASSY.				
REF NO.	PART NO.	DESCRIPTION	REGD NO.	
1	M150-1021000	CHAIN OIL PUMP	1	
2	M150-1020002	NUT FLANGE M6	1	
3	M150-1020001	SPROCKET OIL PUMP DRIVEN	1	
4	M150-1003075	BOLT M6X25	2	
5	M150-1022000	OIL PUMP SUB ASSY.	1	

DRIVEN PULLEY AND CLUTCH SUBASSY.



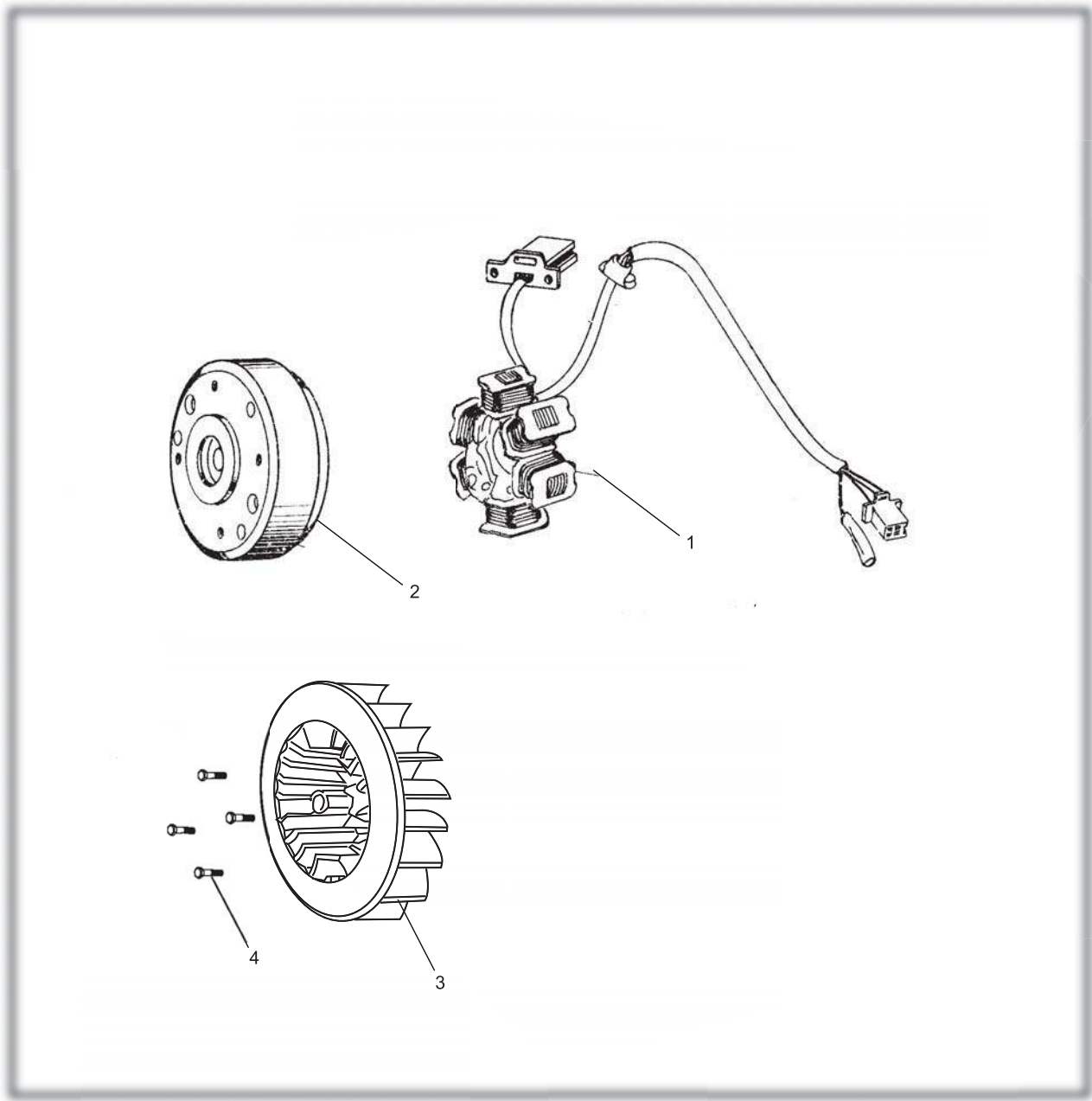
DRIVEN PULLEY AND CLUTCH SUBASSY.

REF NO.	PART NO.	DESCRIPTION	REGD NO.	
1	M150-1032000	CLUTCH ASSY. OUTER	1	
2	M150-1033000	DRIVE BELT	1	
3	M150-1031000	DRIVEN PULLEY ASSY.	1	

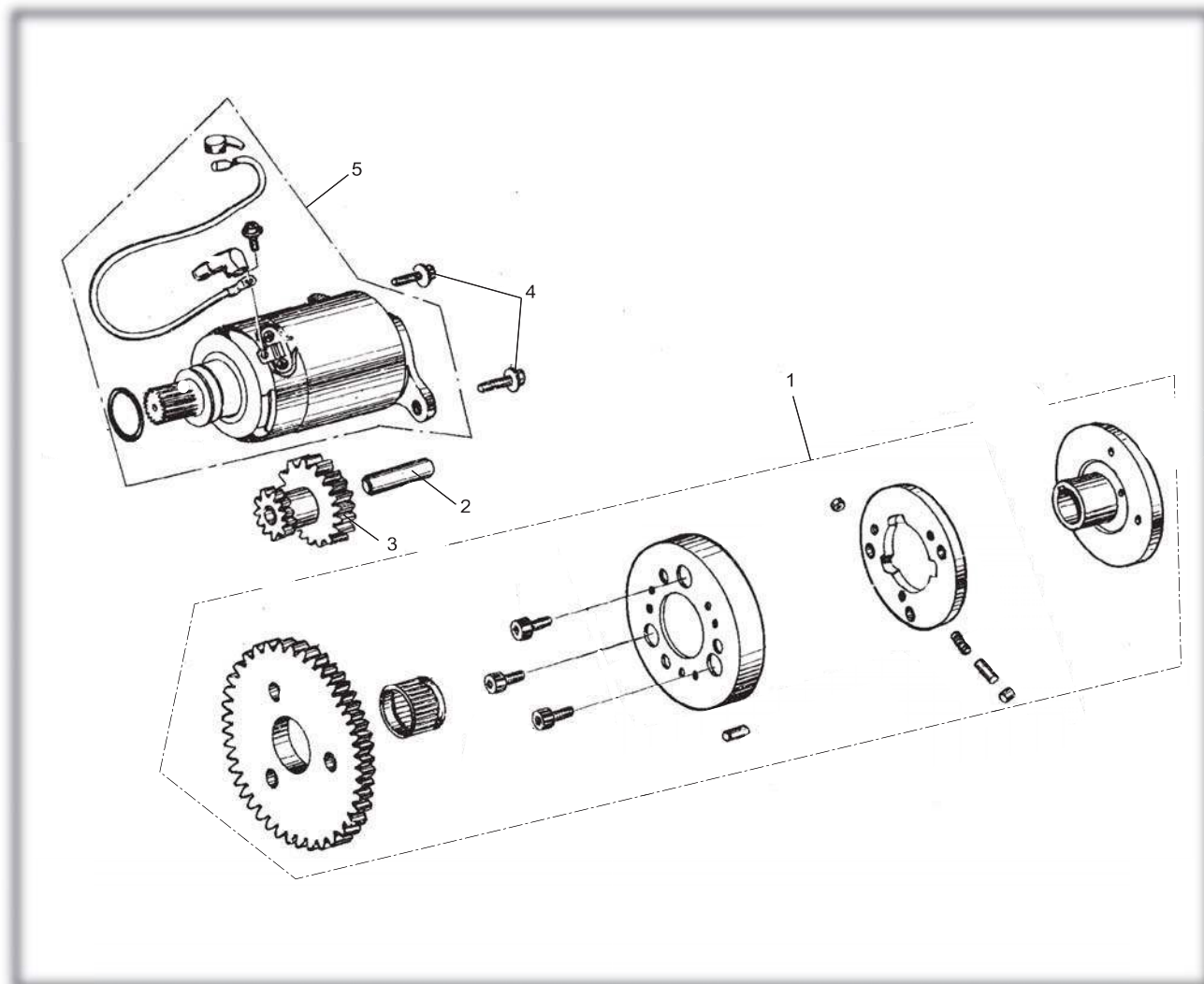
TRANSMISSION ASSY.**TRANSMISSION ASSY.**

REF NO.	PART NO.	DESCRIPTION	REGD NO.	
1	M150-1040001	TRANSMISSION COVER	1	
2	M150-1041000	TRANSMISSION COVER GASKET	1	
3	91004-E6203-KAT	RADIAL BALL BEARING E6203	1	
4	91004-E6202-KAT	RADIAL BALL BEARING E6202	1	
5	91004-E6204-KAT	RADIAL BALL BEARING E6204	1	
6	M150-1040008	SPECIAL BOLT M8X12	2	
7	M150-1040002	WASHER Φ8	1	
8	M150-1042000	OIL SEAL 20X32X6	1	
9	M150-1040004-N	FINAL GEAR (36)	1	
10	94510-20000	EXTERNAL CIRCLIP 20	1	
11	M150-1040003	FINAL SHAFT	1	
12	M150-1043000-N	COUNTER SHAFT COMP. (17)	1	
13	M150-1040007	COMPRESSOR FLANGE NUT M12	1	
14	M150-1040005	WASHER Φ12	1	
15	M150-1040006	DRIVE SHAFT	1	

ELECTRIC SYSTEM

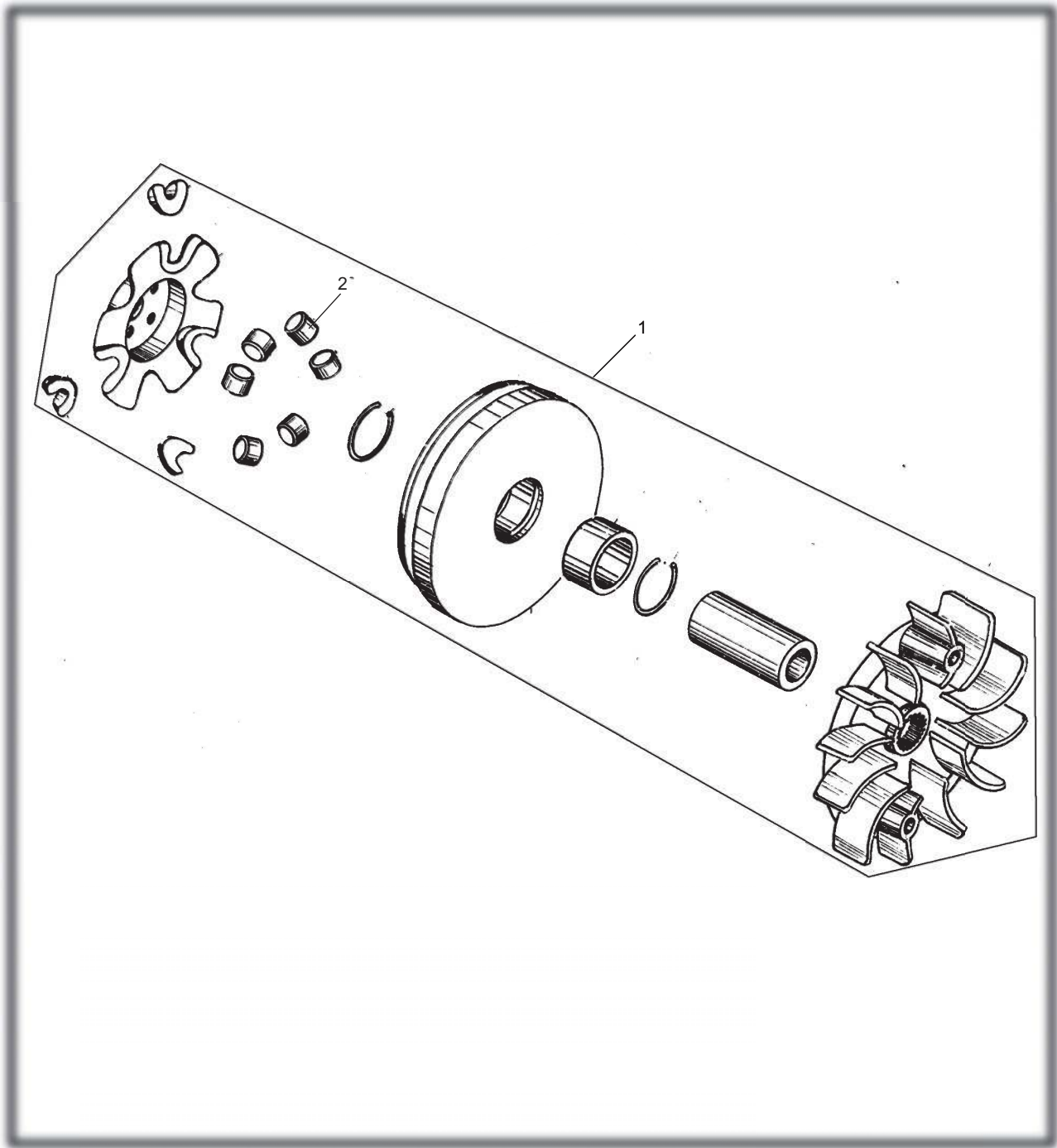


ELECTRIC SYSTEM				
REF NO.	PART NO.	DESCRIPTION	REGD NO.	
1	M150-1051200	STATOR COMP.	1	
2	M150-1051100	FLYWHEEL COMP.	1	
3	M150-1051100-3	COOLING FAN COMP.	1	
4	M150-1051100-4	FLANGE BOLT M6x18	4	

ELECTRIC STARTER ASSY.**ELECTRIC STARTER ASSY.**

REF NO.	PART NO.	DESCRIPTION	REGD NO.	
1	M150-1060001	FLANGE STARTING CLUTCH	1	
2	M150-1060002	STARTER REDUCTION GEAR SHAFT	1	
3	M150-1060003	STARTER REDUCTION GEAR	1	
4	M150-1060005	FLANGE BOLT M6X16	2	
5	M150-1064000	STARTER MOTOR ASSY.	1	

DRIVE PULLEY SUBASSY.

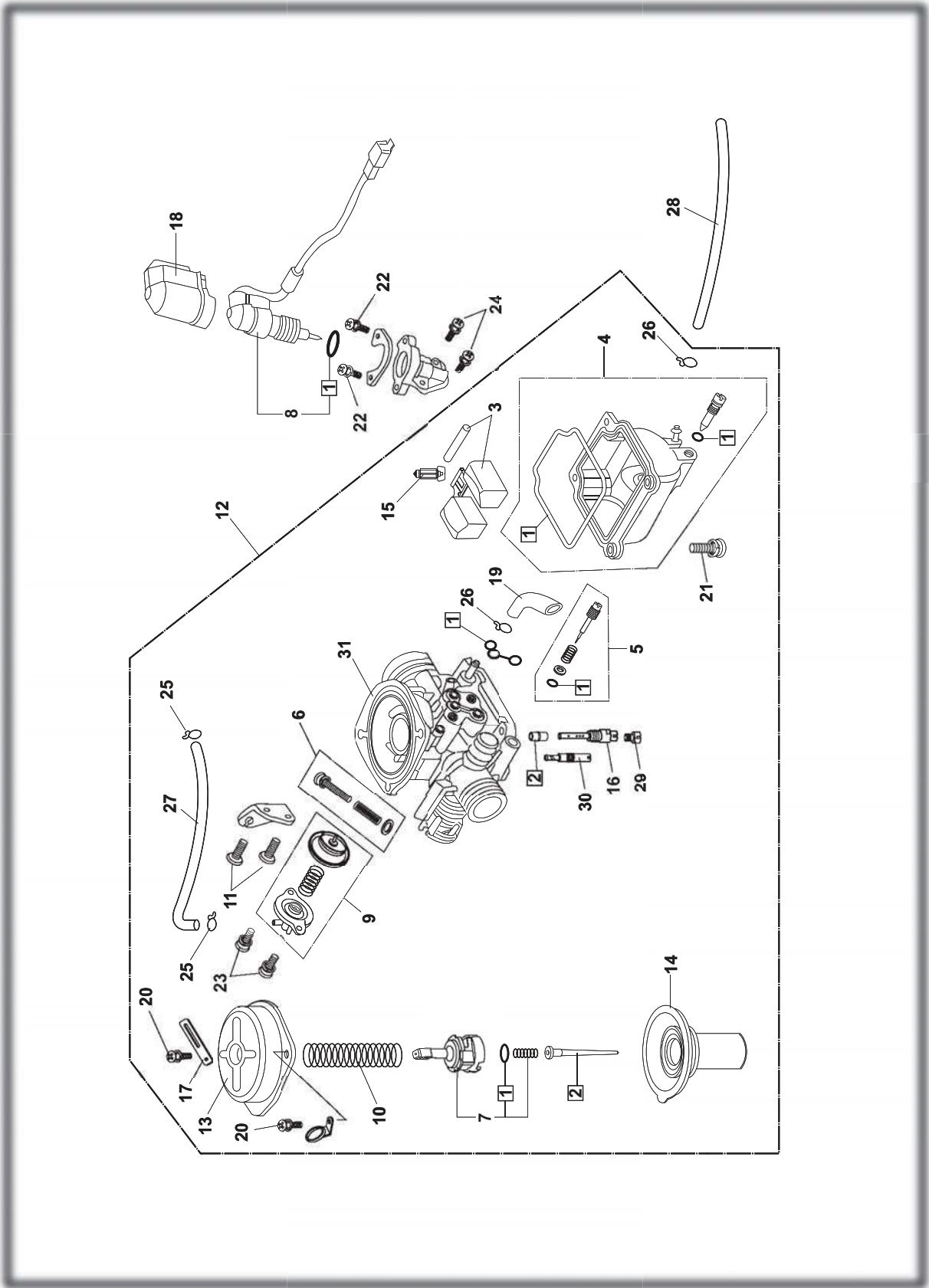


DRIVE PULLEY SUBASSY.

REF NO.	PART NO.	DESCRIPTION	REGD NO.	
1	M150-1071000	MOVABLE DRIVE PULLEY ASSY.	1	
2	M150-1071002	ROLLER	6	

FIG.15

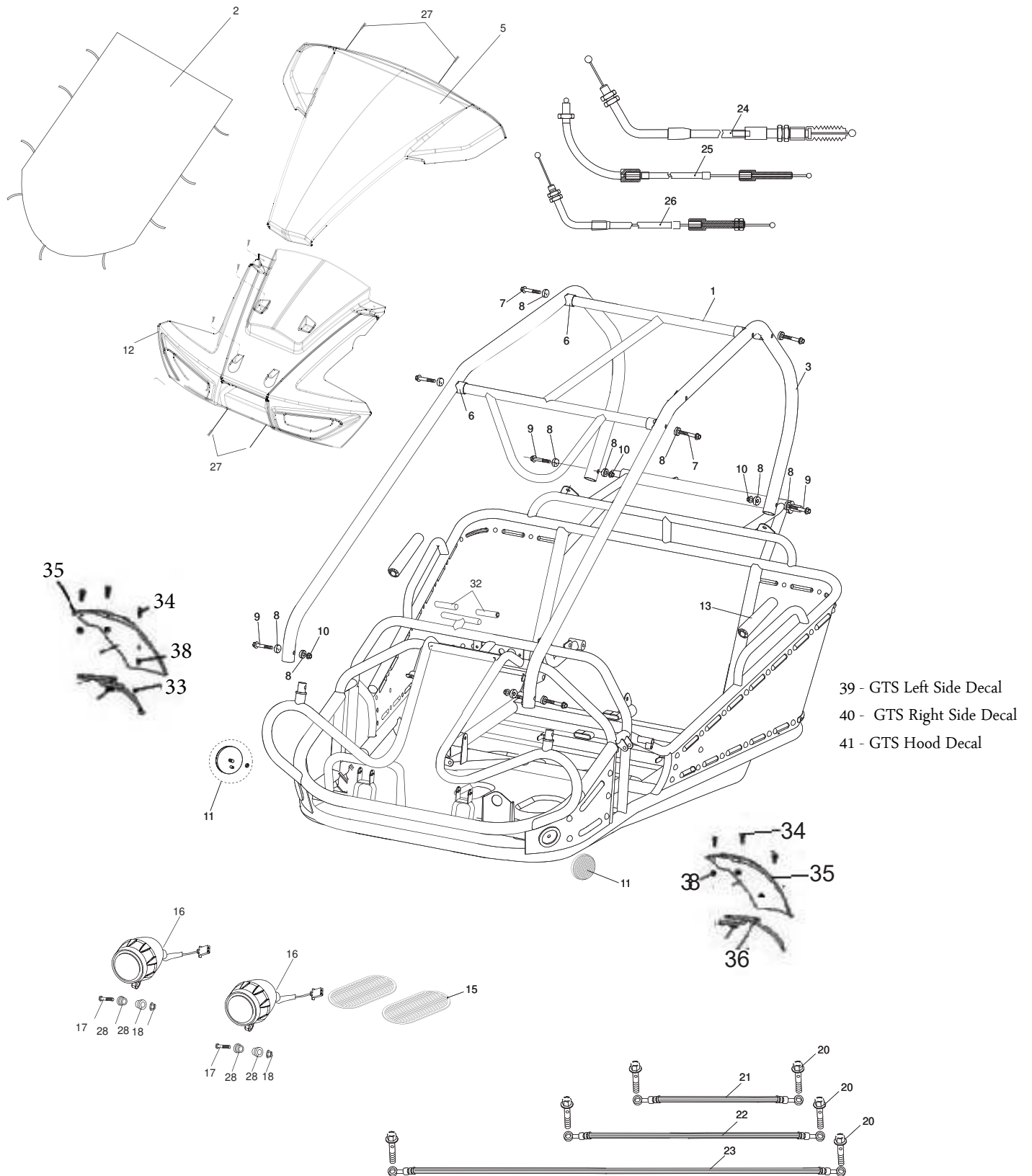
CARBURETOR



[illegible]

FIG.16

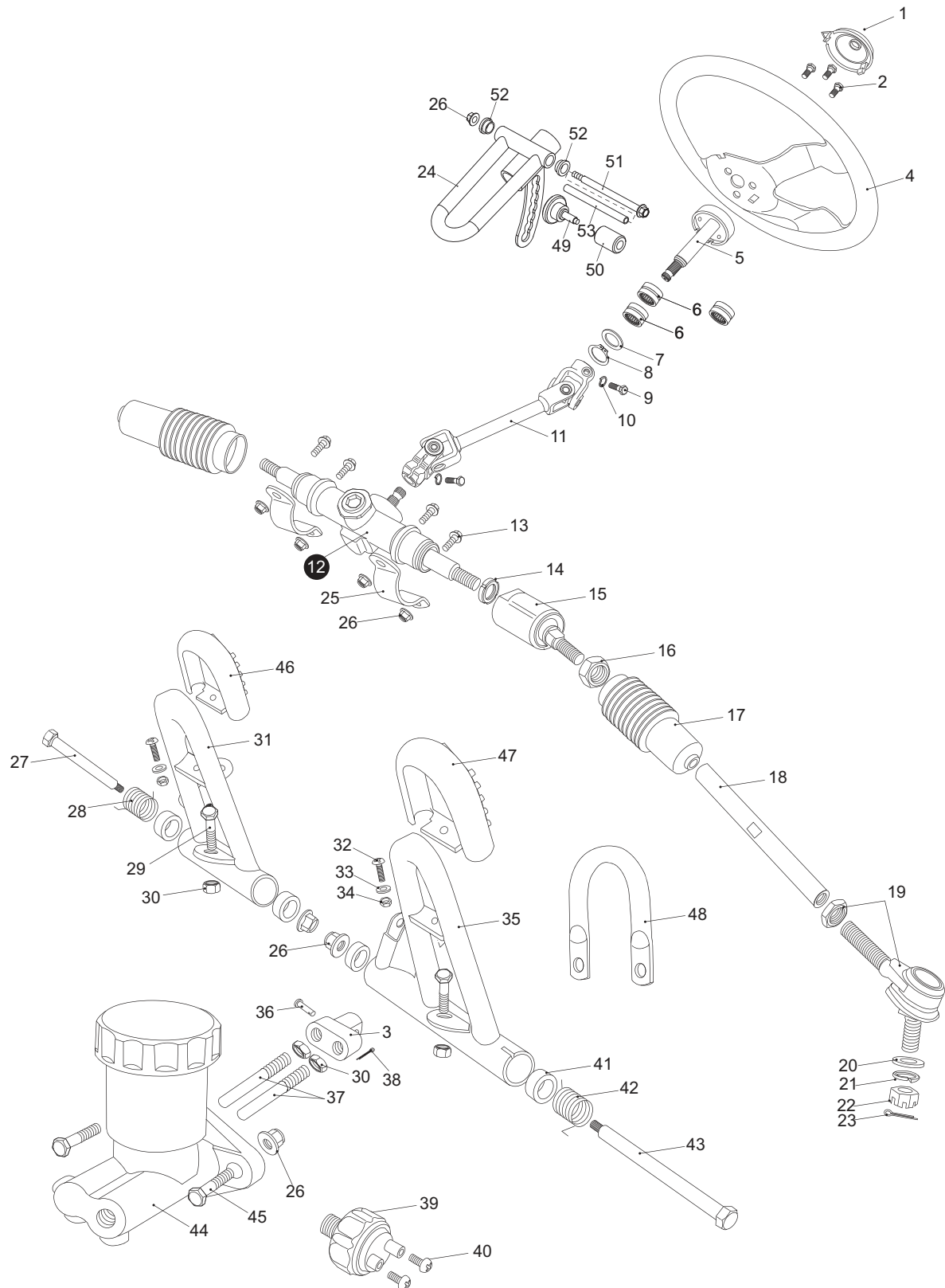
FRAME GROUP



FRAME GROUP				
REF NO.	PART NO.	DESCRIPTION	REGD NO.	
1	13-0101-00-FB	C.B.C. CROSS BAR FLAT BLACK	1	
2	13-0801-00	CANOPY TOP	1	
3	13-0102-00-FB	C.B.C. BAR CAGE FLAT BLACK	2	
4			1	
5	13-0201-00-color code	FR. HOOD, UPPER (-FB, BL, RED, ORG, CM)	1	
6	7.010.017	TUBE SEAT Φ 25	8	
7	9.108.055	SOCKET BOLT M8X1.25X55	8	
8	7.010.049	R-WASHER	16	
9	9.108.050	SOCKET BOLT M8X1.25X50	4	
10	9.220.008	LOCKING FLANGE NUT M8	4	
11	6.000.144	FRONT REFLECTOR	2	
12	13-0202-03	FR. HOOD, LOWER	1	
13	6.000.083	FOAM PADDING	2	
14	003-050016-00	SCREW BOLT, M5X16	12	
15	7.020.012	RUBBER FOOT PLATE	2	
16	13-0206-00	HEADLIGHT UNIT	2	
17	9.108.050	FLANGE BOLT M8 x 1.25 x 50	2	
18	9.220.008	NUT M8	2	
19				
20	9.700.004	BANJO BOLT M10x24	6	
21	6.000.089	BRAKE HOSE ASSY. L. 34"	1	
22	6.000.090	BRAKE HOSE ASSY. R. 43"	1	
23	6.000.091	BRAKE HOSE ASSY. RR. 75"	1	
24	6.000.232	THROTTLE CABLE COMP.	1	
25	6.000.040	REVERSE CABLE COMP.	1	
26	6.000.050	PARKING BRAKE CABLE COMP.	1	
27	9.600.615	PAN SCREW, M6X12	4	
28	7.020.049	HEADLIGHT RUBBER MOUNT	4	
29				
30			1	
31			1	
32	13-0501-00	GRIP, HANDLEBAR	1	
33	6.000.102	RIGHT FRONT FENDER BRACKET (pin frame mount)	1	
34	9.106.014	FLANGE BOLT M6X14	6	
35	7.010.034-SS	FRONT FENDER	2	
36	6.000.067	LEFT FRONT FENDER BRACKET (pin frame mount)	1	
37	9.106.040	BOLT M6X40	2	
38	9.220.006	LOCKING FLANGE NUT M8	10	
39	13-1210-00L	SIDE BODY STICKER LEFT	1	
40	13-1210-00R	SIDE BODY STICKER RIGHT	1	
41	13-1208-00	HOOD DECAL	1	

FIG.17

STEERING SHAFT ASSY.

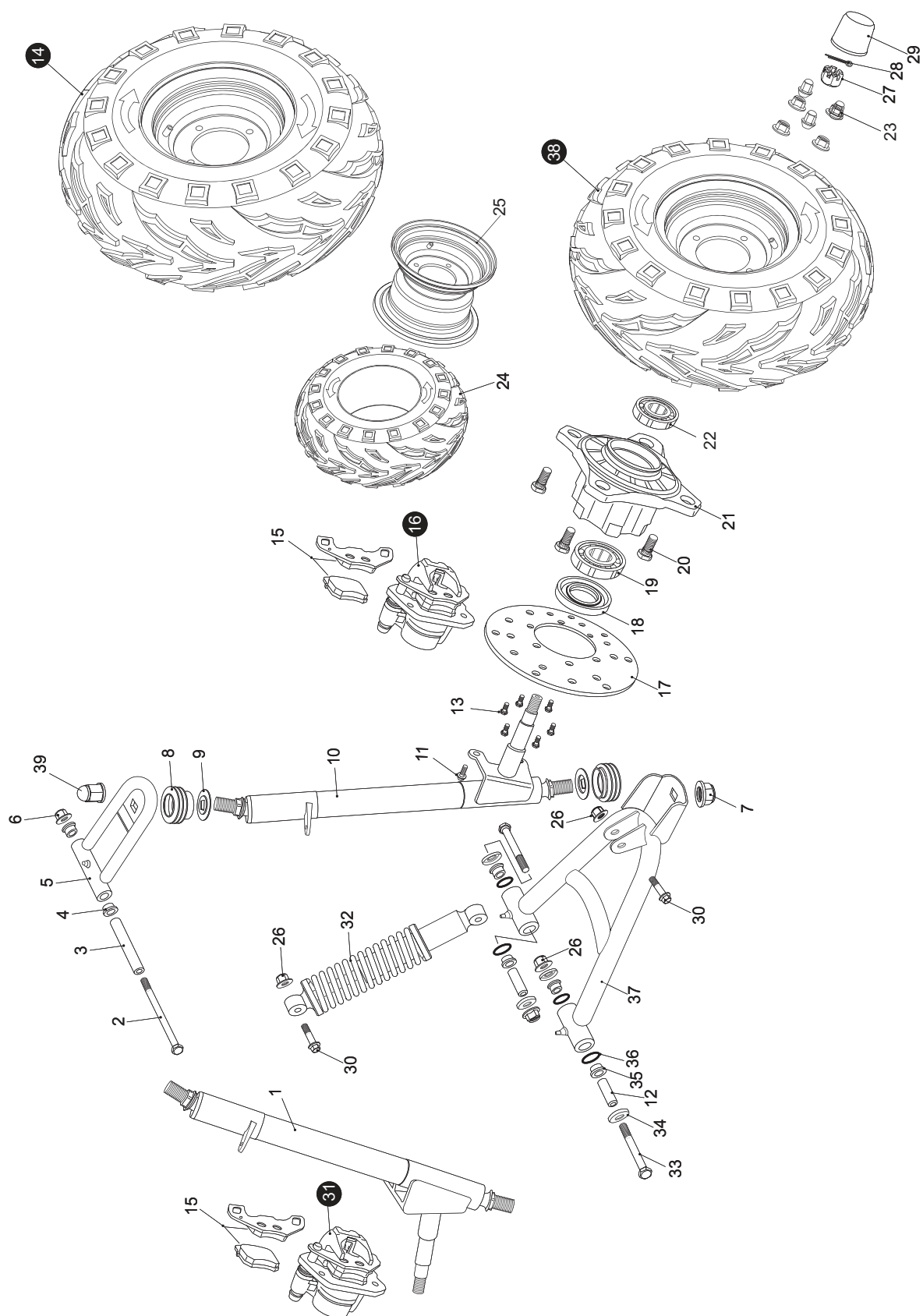


STEERING SHAFT ASSY.

REF NO.	PART NO.	DESCRIPTION	REGD NO.	
1	7.010.041	STEERING BOLT COVER	1	
2	9.106.012	BOLT STRAP M6x12	3	
3	8.030.024	SPINDLE BRACKET	1	
4	7.020.038	STEERING WHEEL	1	
5	6.000.122	STEERING SHAFT	1	
6	9.030.012	BEARING NK20/16	2	
7	9.700.020	SPECIAL WASHER $\Phi 20$	1	
8	9.700.120	CIRCLIP $\Phi 20$	1	
9	9.108.025	BOLT M8x25	2	
10	9.400.008	LOCKING WASHER $\Phi 8$	2	
11	13-1007-00	STEERING KNUCKLE	1	
12	4.000.008-250	STEERING GEAR	1	
13	9.108.025	FLANGE BOLT M8x1.25x25	4	
14	9.900.016	ROUND NUT M16x1.5	2	
15	4.000.008	STEERING BALL JOINT	2	
16	9.200.010	NUT M10	2	
17	7.020.002	BALL JOINT DUST COVER. L.	2	
18	8.010.157	TIE ROD	2	
19	6.000.062	ROD END	2	
20	9.300.010	FLAT WASHER $\Phi 10$	2	
21	9.400.010	LOCKING WASHER $\Phi 10$	2	
22	9.800.010	CASTLE NUT M10	2	
23	9.500.215	COTTER PIN $\Phi 2 \times 15$	2	
24	4.100.051-FB	TILT STEERING HOUSING FB	1	
25	8.020.014	STEERING GEAR BRACKET	2	
26	9.220.008	LOCKING FLANGE NUT. M8	8	
27	9.708.145	THROTTLE PEDAL BOLT M8x1.25x145	1	
28	8.040.001	THROTTLE PEDAL RETURN SPRING, L	1	
29	9.108.040	FLANGE BOLT M8x1.25x40	2	
30	9.200.008	NUT M8	2	
31	4.000.016	THROTTLE PEDAL COMP.	1	
32	9.600.515	PAN SCREW M5x15	2	
33	H5260067	PEDAL PAD PLATE	2	
34	9.200.005	NUT m5	2	
35	4.000.015	BRAKE PEDAL COMP	1	
36	9.700.624	PIN 6x24	1	
37	8.010.081	SPINDLE PIN	2	
38	9.500.212	COTTER PIN 2X12	1	
39	6.000.063	BRAKE LAMP SWITCH ASSY.	1	
40	9.600.306	PAN SCREW M3x6	2	
41	7.010.004	PEDAL BUSH	4	
42	8.040.007	BRAKE PEDAL RETURN SPRING, R	1	
43	9.708.222	BRAKE PEDAL BOLT M8x1.25x222	1	
44	6.000.076	MASTER CYLINDER	1	
45	9.108.035	BOLT-WASHER M8x1.25x35	2	
46	7.020.036	THROTTLE PEDAL PAD	1	
47	7.020.037	BRAKER PEDAL PAD	1	
48	8.070.044	MASTER CYLINDER BRACKET	2	
49	8.010.220	ADJUSTING NOB	1	
50	8.010.221	ADJUSTING NOB BLOCK	1	
51	9.108.110	TILT STEERING BOLT	1	
52	7.010.003	TILT STEERING LOCKING BUSH	2	
53	8.010.222	COLLAR	1	

FIG.18

SUSPENSION ARM ASSY.

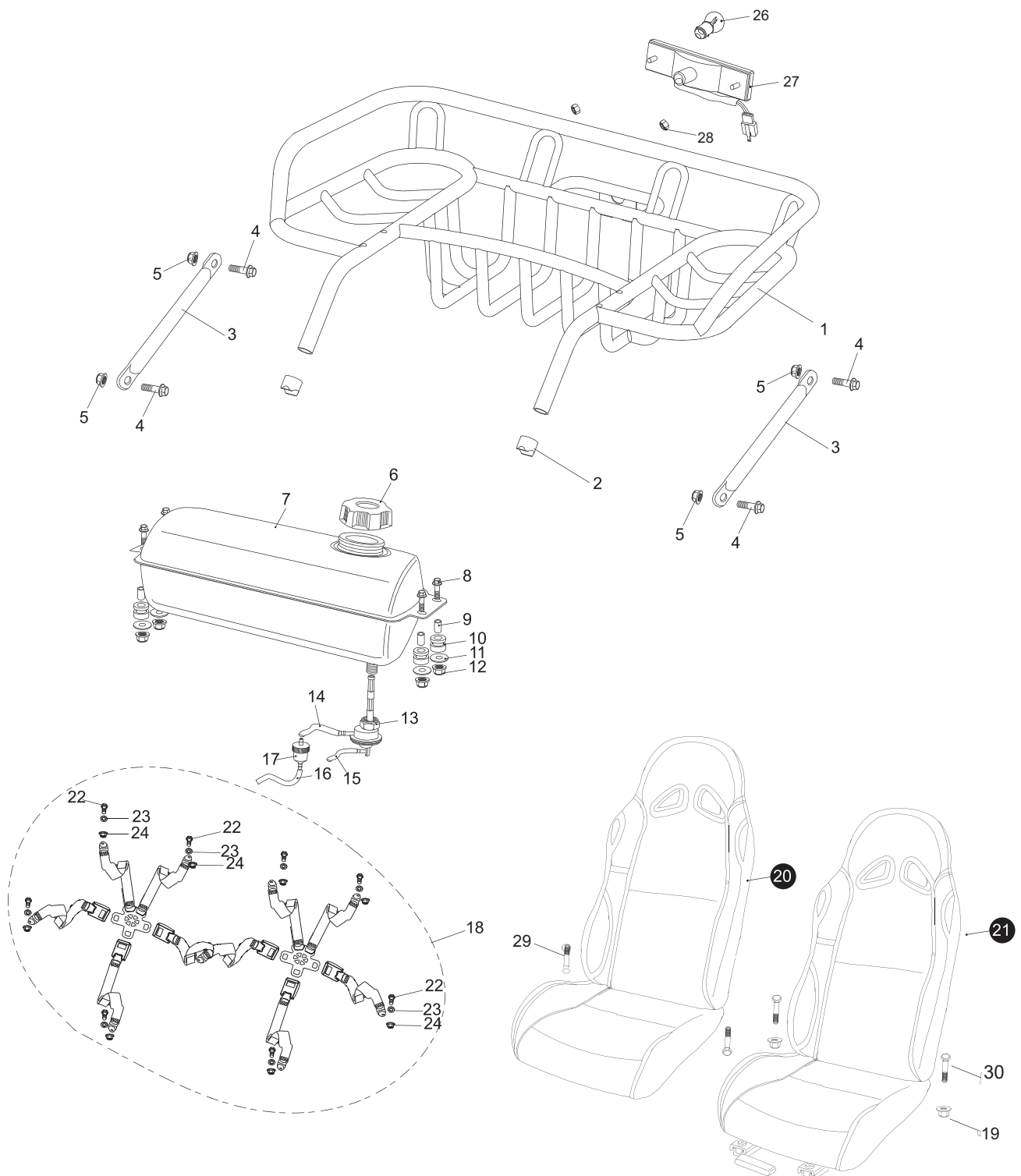


SUSPENSION ARM ASSY.

REF NO.	PART NO.	DESCRIPTION	REGD NO.	
1	2.000.028-GTS	STRUT AND SPINDLE SUPPORT, RIGHT	1	
2	9.108.105	FLANGE BOLT M8x1.25x105	2	
3	8.010.015	UPPER SUSPENSION ARM COLLAR	2	
4	7.010.003	UPPER SUSPENSION ARM BUSHING	4	
5	4.000.004-SLV	UPPER SUSPENSION ARM	2	
6	9.220.008	LOCKING FLANGE NUT. M8	2	
7	7.010.140	LOCKING FLANGE NUT. M12	4	
8	7.020.025	BALL HEAD DUST SEAL	4	
9	8.020.053	BALL HEAD SPACER	4	
10	2.000.027-GTS	STRUT AND SPINDLE SUPPORT, LEFT	1	
11	9.908.014	BOLT STRAP M8x14	4	
12	8.010.014	LOWER SUSPENSION ARM COLLAR	4	
13	9.106.012	BOLT STRAP M6x12	12	
14	13-0903-00	RIGHT FRONT TIRE/WHEEL ASSEMBLY	1	
15	7.020.016	FRONT BRAKE PAD SET	2	
16	6.000.028	LEFT FRONT BRAKE CALIPER W/PADS	1	
17	8.010.054	FRONT DISC BRAKE	2	
18	9.040.002	DUST SEAL 47x25-7	2	
19	9.030.002	BEARING 6204-Z	2	
20	9.710.031	TIRE BOLT M10x1.25x31	8	
21	8.010.085B	FRONT WHEEL HUB BLACK	2	
22	9.030.010	BEARING 6202-Z	2	
23	9.220.010	LOCKING FLANGE NUT M10	8	
24	7.020.033	FRONT TIRE 19x7-8	2	
25	002-100080-03	8" FRONT STEEL WHEEL BLACK	2	
26	9.220.010	LOCKING FLANGE NUT M10	16	
27	9.800.014	CASTLE NUT M14	2	
28	9.500.220	COTTER PIN Φ 2x20	2	
29	7.020.039	FR. HUB COVER.	2	
30	9.110.040	FLANGE BOLT M10x1.25x40	4	
31	6.000.095	RIGHT FRONT BRAKE CALIPER W/PADS	1	
32	6.000.325	CUSHION ASSY. FR L=325	2	
33	9.110.080	FLANGE BOLT M10x1.25x80	4	
34	8.020.034	LOWER SUSPENSION ARM DUST CAP	8	
35	7.010.002	LOWER SUSPENSION ARM BUSHING	8	
36	9.040.001	O-RING Φ 21.2x2.65	8	
37	4.000.023-SLV	LOWER SUSPENSION ARM ASSY.	2	
38	13-0901-00	LEFT FRONT TIRE/WHEEL ASSEMBLY	1	
39	8.010.140	ACORN NUT M12	2	

FIG.19

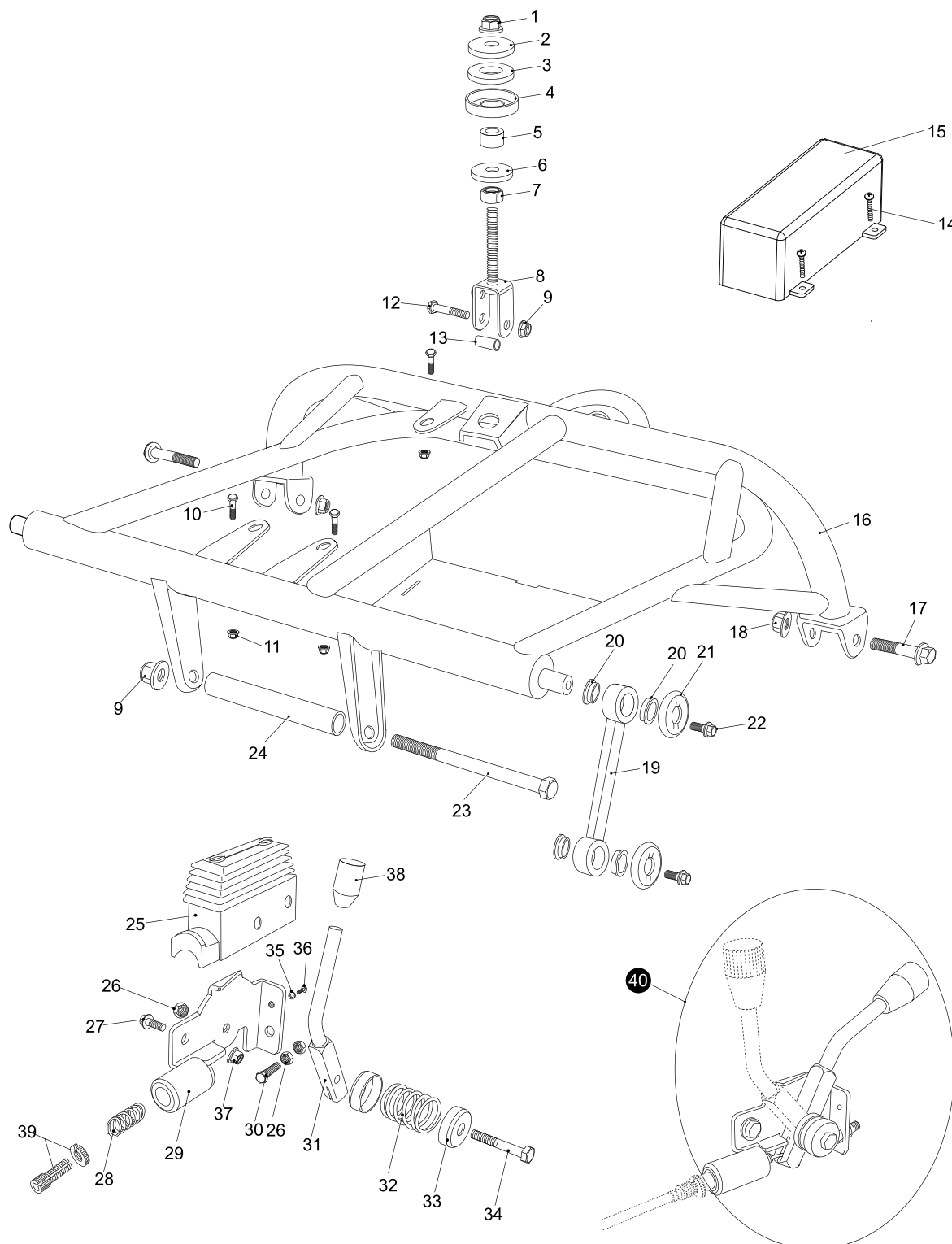
REAR CARGO RACK/SEAT/BELT



REAR CARGO RACK/SEAT/BELT				
REF NO.	PART NO.	DESCRIPTION	REGD NO.	
1	2.000.061-FB	REAR CARGO RACK FLAT BLACK	1	
2	7.010.017	TUBE SEAT Φ 25	2	
3	8.080.051-FB	RACK SUPPORT ARM FLAT BLACK	1	
4	9.108.020	FLANGE BOLT M8X1.25X20	4	
5	9.220.008	LOCKING FLANGE NUT. M8	4	
6	6.000.145	FUEL TANK CAP COMP.	1	
7	99-1300	FUEL TANK KIT W/BRACKET	1	
8	9.108.050	FLANGE BOLT M8X1.25X50	4	
9	8.010.034	TANK COLLAR.	4	
10	7.020.005	RUBBER MOUNT	4	
11	9.300.008	FLAT WASHER Φ 8	4	
12	9.220.008	NYLON LOCKING FLANGE NUT M8	6	
13	6.000.046	AUTO FUEL COCK ASSY.	1	
14	7.020.030	FUEL TUBE COMP. #1	1	
15	7.020.031	VACUUM TUBE COMP.	1	
16	7.020.029	VACUUM TUBE COMP. #2	1	
17	6.000.056	FILTER	1	
18	6.000.354	SAFETY BELT COMP.	1	
19	9.220.008	NUT M8	2	
20	13-0401-00R	SEAT COMP (PASSENGER)	1	
21	13-0401-00L	SEAT COMP (DRIVER)	1	
22	9.700.001	SPECIAL BOLT, M7/16"x28	1	
23	9.700.002	WASHER BELT Φ 12	9	
24	9.700.003	BELT NUT M7/16"	9	
25	6.000.379	SEAT RALL SET.	1	
26	9.090.002	TAIL LIGHT BULB. 21W/5W 12V	1	
27	6.000.010	TAIL LIGHT	1	
28	9.200.005	LOCKING NYLON NUT, M5	2	
29	9.108.040	BOLT M8X1.25X40	2	
30	9.900.840	SEAT RAIL BOLT M8X1.25X40	2	

FIG.20

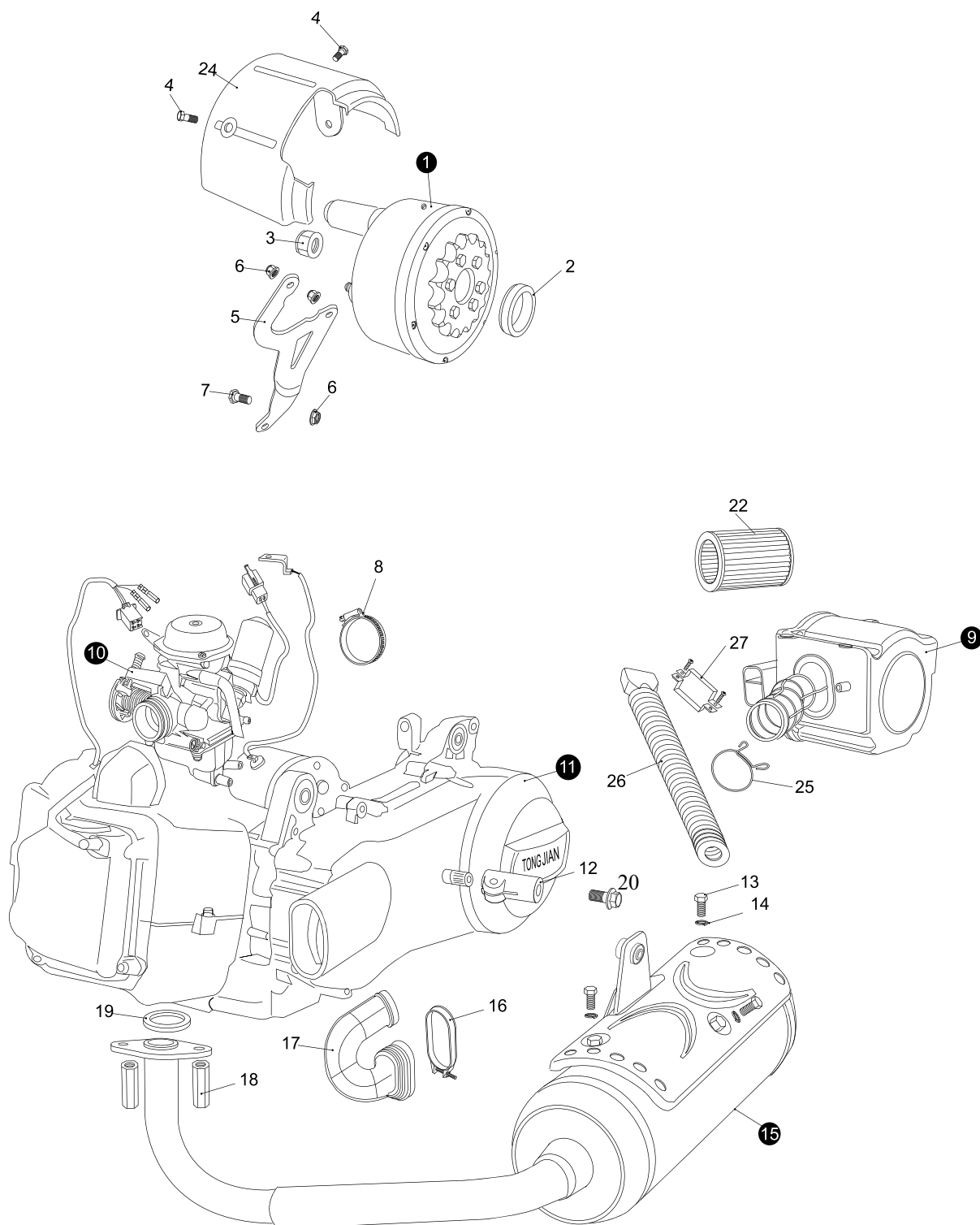
REAR SWING ARM ASSY. UPPER



[illegible]

FIG.21

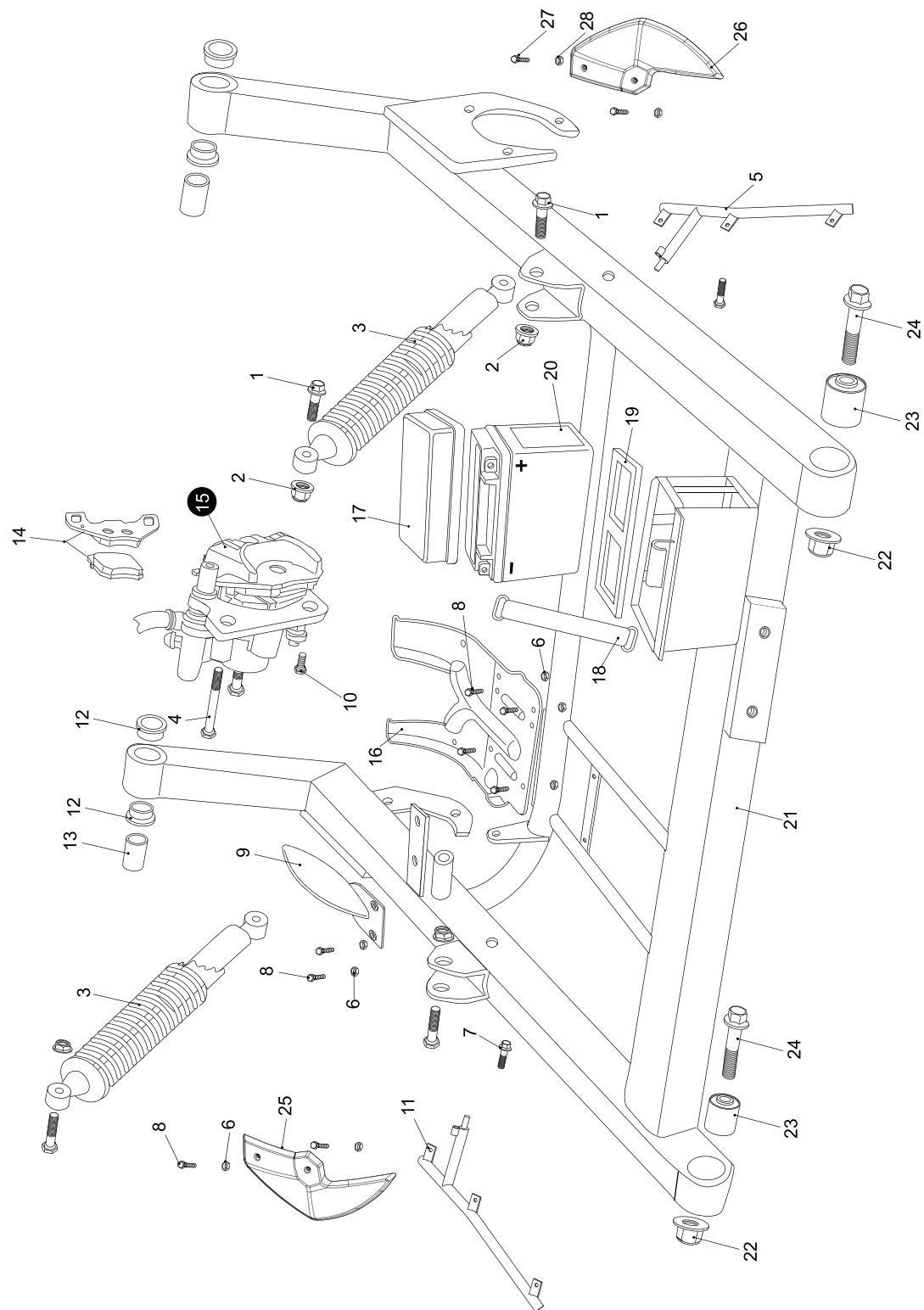
ENGING/MUFFLER/AIR CLEANER



ENGINE/MUFFLER/AIR CLEANER				
REF NO.	PART NO.	DESCRIPTION	REGD NO.	
1	6.000.157	REVERSE ASSY.	1	
2	8.010.122	INTERNAL COLLAR REVERSE	1	
3	9.220.016	LOCKING FLANGE NUT M16	1	
4	9.106.012	FLANGE BOLT M6X12	2	
5	8.020.173	REVERSE BRACKET	1	
6	9.220.008	LOCKING FLANGE NUT M8	3	
7	9.108.040	BOLT STRAP, M8X1.25X40	1	
8	8.020.056	AIR CLEANER CLAMP	1	
9	4.000.055	AIR CLEANER ASSY.	1	
10	6.000.024	CARBURETOR W/ELECTRIC CHOKE	1	
11	N.L.A.	EXTERNAL REVERSE 150CC ENGINE	1	
12	8.030.037	MUFFLER RACK SUPPORT (m10 threads)	1	
13	9.106.012	BOLT, M6X12	3	
14	9.400.006	LOCKING WASHER $\phi 6$	3	
15	6.000.074	MUFFLER COMP. EX	1	
16	8.020.055	BOOT CLAMP	1	
17	6.000.162	SIDE CASE BOOT	1	
18	9.040.027	MUFFLER JOINT NUT, M6	2	
19	M150-3050354	EX. PIPE GASKET	1	
20	9.110.020	Flange Bolt m10x20	1	
21			4	
22	6.000.151	AIR CLEANER ELEMENT	1	
23			1	
24	7.010.033	CHAIN PROTECTOR, RR.	1	
25	8.040.013	AIR CLEANER CLIP	1	
26	N.L.A.	AIR CLEANER DUCT	1	
27	N.L.A.	AIR CLEANER CLAMP	1	
28	9.108.040	FLANGE BOLT, M8X1.25X40	1	

FIG.22

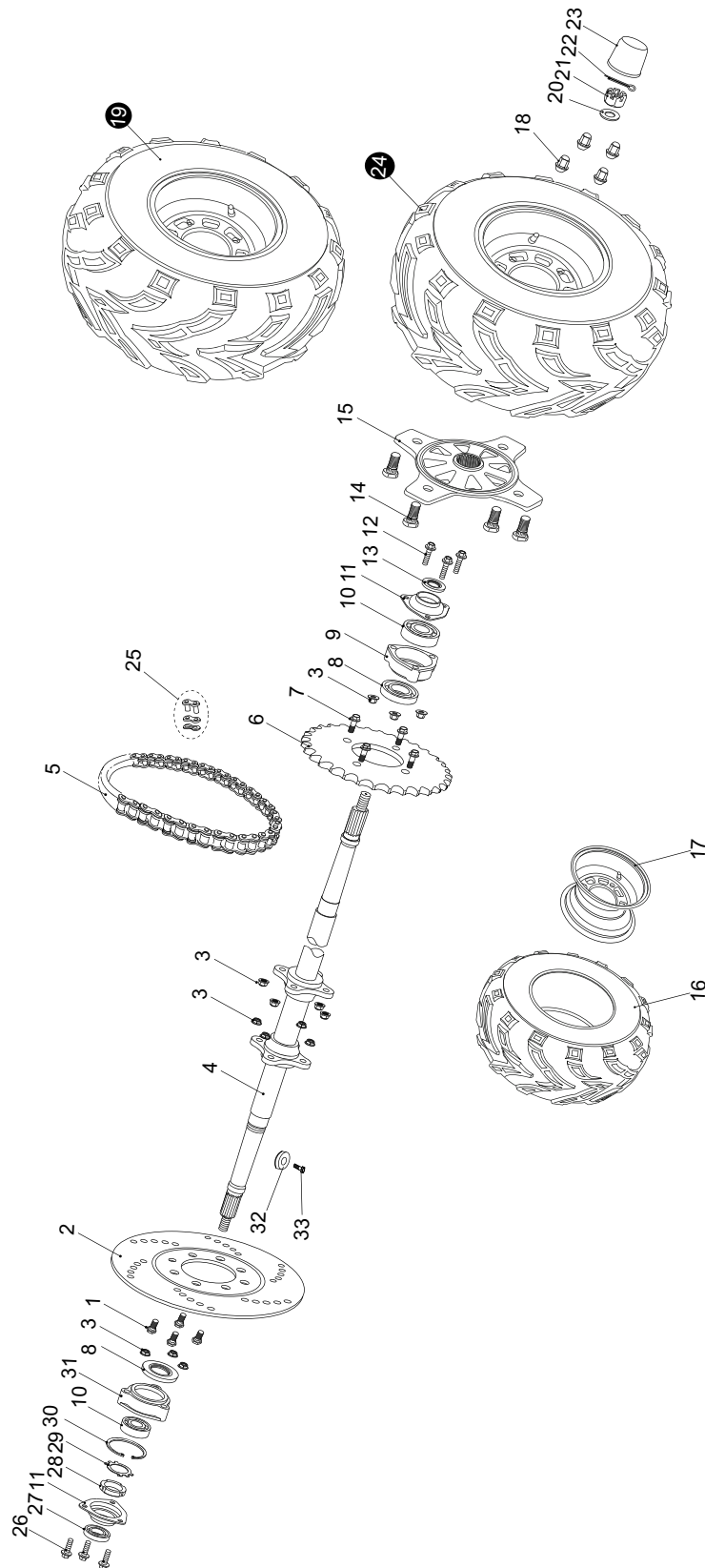
REAR SWING ARM



REAR SWING ARM				
REF NO.	PART NO.	DESCRIPTION	REGD NO.	
1	9.110.040	FLANGE BOLT M10x1.25x40	4	
2	9.220.010	LOCKING FLANGE NUT M10	4	
3	6.000.006	CUSHION ASSY. RR	2	
4	9.908.100	BOLT STRAP M8x1.25x100	1	
5	13-0601-00L	LEFT REAR FENDER BRACKET (PIN MOUNT)	1	
6	9.220.006	LOCKING NYLON NUT M6	12	
7	9.108.045	FLANGE BOLT M8x1.25x45	2	
8	9.106.016	FLANGE BOLT M6x16	12	
9	7.010.031	DISC. RR COVER	1	
10	9.908.012	ALLEN HEAD BOLT M8x1.25x12	1	
11	13-0601-00R	RIGHT REAR FENDER BRACKET (PIN MOUNT)	1	
12	7.010.006	SWING ARM BUSHING	4	
13	8.010.028	SWING ARM COLLAR	2	
14	7.020.022	REAR BRAKE PAD SET	1	
15	6.000.229	REAR BRAKE CALIPER W/PADS	1	
16	7.010.032	CHAIN DISC GUARD	1	
17	7.010.028	BATTERY COVER	1	
18	7.020.023	BATTERY BAND	1	
19	7.020.020	BATTERY LOWER CUSHION	1	
20	6.000.085	BATTERY (YTX12-BS)	1	
21	2.000.042	RR. LOWER SWING ARM COMP.	1	
22	9.220.012	LOCKING FLANGE NUT M12	2	
23	7.020.008	SWING ARM CUSHION BUSHING	2	
24	9.112.060	FLANGE BOLT M12x1.25x60	2	
25	13-0204-00R-color code	RR. FENDER, RH (-FB, BL, RED, ORG, CM)	1	
26	13-0204-00L-color code	RR. FENDER, LH (-FB, BL, RED, ORG, CM)	1	
27	9.106.016	BOLT, M6X16	2	
28	9.220.006	NUT, M6	2	

FIG.23

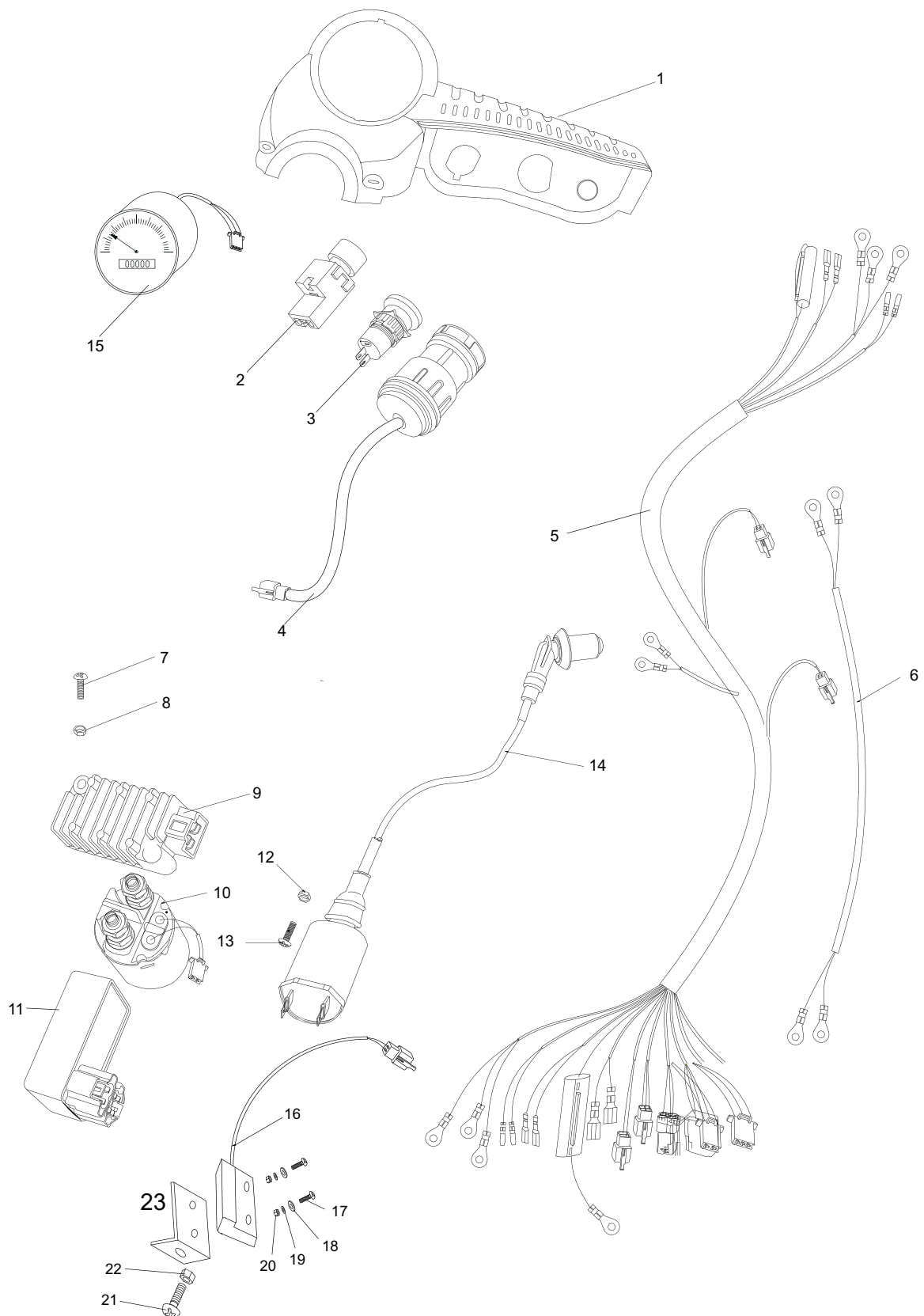
REAR HOUSING



REAR HOUSING				
REF NO.	PART NO.	DESCRIPTION	REGD NO.	
1	9.108.022	BOLT-WASHER M8x1.25x22	4	
2	8.010.053	DISC. RR. BRAKE	1	
3	9.220.008	LOCK FLANGE NUT. M8	14	
4	8.010.057B	REAR AXLE	1	
5	9.070.002	CHAIN O-RING DRIVE.	1	
6	13-1110-00	REAR SPROCKET 39T	1	
7	9.108.027	BOLT-WASHER M8x1.25x27	4	
8	9.040.006	DUST SEAL 50X34-7	2	
9	8.030.008	COMP. HOUSING RR. AXLE BRG	2	
10	9.030.006	BEARING 6206	2	
11	8.020.028	BEARING BASE	2	
12	9.108.040	BOLT-WASHER M8x1.25x40	6	
13	9.040.007	DUST SEAL 42X30-7	2	
14	9.710.031	BOLT. TIRE M10x1.25x31	8	
15	8.010.089B	REAR WHEEL HUB BLACK	2	
16	7.020.035	REAR TIRE 21x10-10	2	
17	002-100100-03	10" REAR STEEL WHEEL BLACK	2	
18	9.220.010	LUG NUT M10	8	
19	13-0904-00	RIGHT REAR TIRE/WHEEL ASSEMBLY	1	
20	9.700.016	SPACER. RR. WHEEL 16	2	
21	9.800.016	CASTLE NUT. M16	2	
22	9.500.430	COTTER PIN. 4X30	2	
23	7.020.039	COVER. RR. HUB	2	
24	13-0902-00	LEFT REAR TIRE/WHEEL ASSEMBLY	1	
25	6.000.149	MASTER LINK. CHAIN	1	
26	9.108.045	FLANGE BOLT M8X1.25X45	3	
27	9.040.008	DUST SEAL 42X28-7	1	
28	9.900.030	ROUND NUT M30X1.5	1	
29	8.020.181	KEEPER	1	
30	9.700.300	CIRCLIP Φ 62	1	
31	8.030.033	AXLE BRG HOUSING COMP.RR	1	
32	7.050.001	MAGNETIC CONTACT	1	
33	9.600.308	EYE BOLT, M3X6	1	

FIG.24

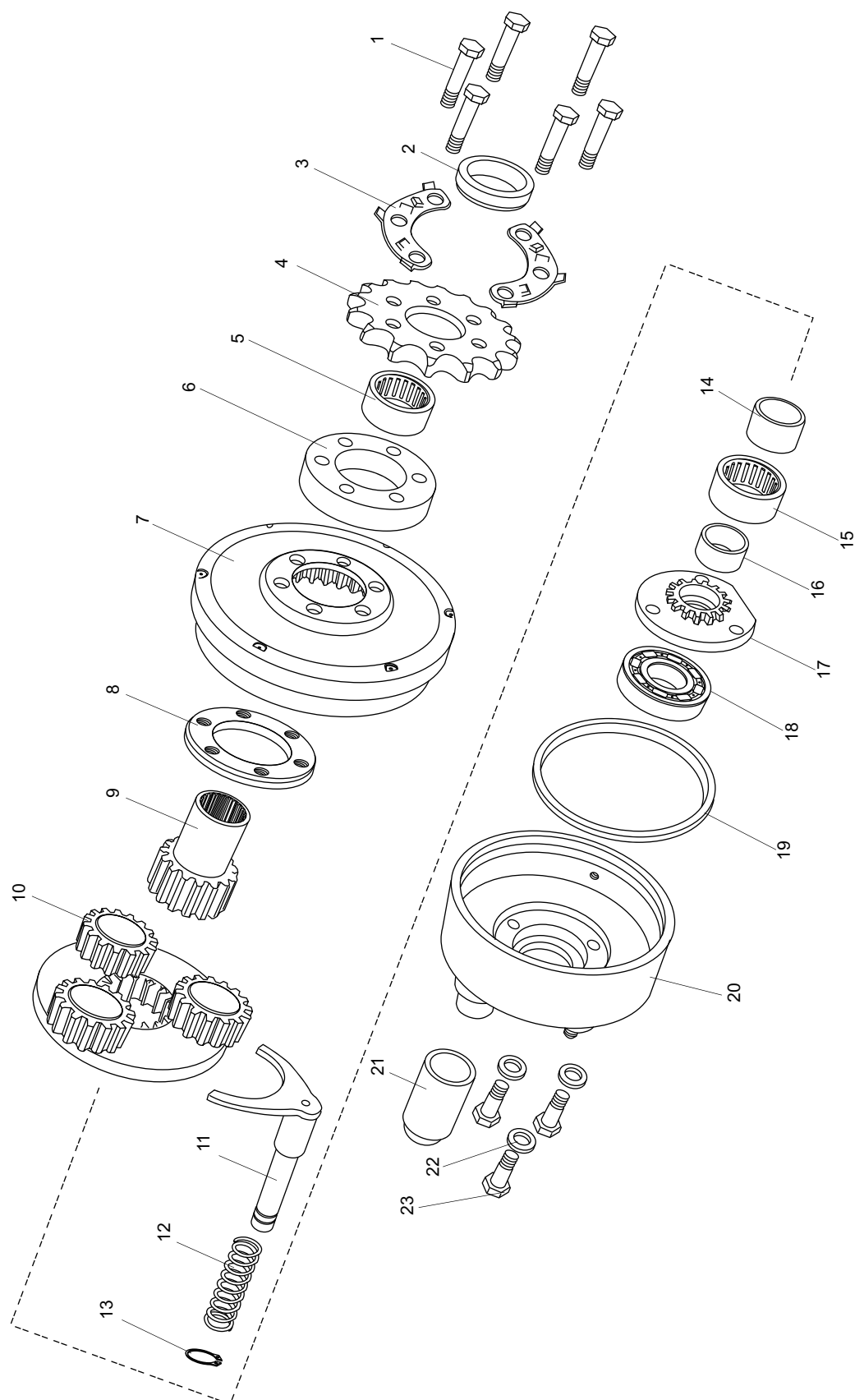
WIRE HARNESS/ELECTRICAL



WIRE HARNESS/ELECTRICAL				
REF NO.	PART NO.	DESCRIPTION	REGD NO.	
1	13-0205-00	SWITCH PANEL COVER	1	
2	N.L.A.	IGNITION START SWITCH (PUSH BUTTON)	1	
3	6.000.159	ENGINE STOP BUTTON	1	
4	N.L.A.	KEY & HEADLIGHT SWITCH	1	
5	N.L.A.	WIRE HARNESS.	1	
6	6.000.204	POSITIVE AND NEGATIVE BATTERY CABLES	1	
7	9.106.020	BOLT M6x20	2	
8	9.220.006	NYLON LOCKING NUT M6	2	
9	6.000.124-GTS	REGULATE RECTIFIER COMP.	1	
10	6.000.035	STARTING RELAY	1	
11	6.000.267	C.D.I. UNIT COMP.	1	
12	9.210.005	NYLON LOCKING NUT M5	1	
13	9.600.525	ROUND HEAD BOLT M5x25	1	
14	6.000.126	IGNITION COIL COMP.	1	
15	13-0305-00	SPEEDOMETER	1	
16	6.000.268	SPEEDOMETER SENSOR	1	
17	12.026.024	SCREW, M3X10 (GB818)	1	
18	12.026.025	SPRING WASHER, 3 (GB93)	1	
19	12.026.026	FLAT WASHER,3 (GB97.1)	1	
20	12.026.027	NUT, M3 (GB6170)	1	
21	9.106.020	BOLT, M6X20 (GB5787)	1	
22	9.200.006	NUT, M6 (GB6187)	1	
23	8.020.197	SPEED SENSOR BRACKET	1	

FIG.25

REVERSE ASSY.



REVERSE ASSY.				
REF NO.	PART NO.	DESCRIPTION	REGD NO.	
1	9.106.016	BOLT M6x25	6	
2	8.010.122	INTERNAL COLLAR	1	
3	8.020.167	KEEPER	6	
4	8.010.123	DRIVE SPROCKET	1	
5	9.030.007	NEEDLE BEARING 26x35x20	1	
6	8.010.119	BEARING FLANGE PLATE	1	
7	8.010.169	GEAR CASE. L	1	
8	8.010.170	GEAR CASE FLANGE PLATE	1	
9	8.010.124	DRIVE GEAR	1	
10	6.000.222	COUNTER GEAR SHAFT COMP	1	
11	8.010.125-GTS	GEAR SHIFT YOKE	1	
12	8.040.012	GEAR SHIFTING YOKE SPRING	1	
13	9.700.112	CIRCLIP $\Phi 12$	1	
14	8.010.121	DRIVE GEAR BUSHING	1	
15	9.030.008	NEEDLE BEARING 22x30x14	1	
16	8.010.126	BUSHING. DRIVE GEAR	1	
17	8.030.029	GEAR SEAT	1	
18	9.030.003	BEARING 6203	1	
19	7.020.055	RUBBER OIL SEAL	1	
20	8.030.028	GEAR CASE. R	1	
21	8.010.127	SHIFTING YOKE COVER	1	
22	9.400.008	LOCK WASHER 8	3	
23	9.100.821	SCREW PAN M8x21	3	