

# **2015 RL1100 Parts Manual**

**PLEASE REFER TO THIS PARTS MANUAL FOR  
ORDERING SPARE PARTS AND PACKAGED KITS.**

## **RL1100 (4WD)**



### **FOR OFF-ROAD USE ONLY**

**This vehicle is designed and manufactured for off-road use only.**

**It does not conform to federal motor vehicle safety standards, and operation on public streets, roads, or highways is illegal.**

# **TABLE OF CONTENTS**

<b><u>CATEGORY</u></b>	<b><u>SECTION</u></b>	<b><u>DESCRIPTION</u></b>	<b><u>PAGE</u></b>
1. ENGINE	1.0	ENGINE RELATED PARTS	3
	1.1	COMPLETE ENGINE AND ENGINE REBUILD KIT	3-4
	1.2	COOLING SYSTEM	5-6
	1.3	CYLINDER BLOCK	7-8
	1.4	CRANKSHAFT	9-10
	1.5	EXHAUST MANIFOLD	11
	1.6	INTAKE SYSTEM	12-13
	1.7	OIL PUMP	14
	1.8	CYLINDER HEAD	15-16
	1.9	VALVE COVER	17
	1.10	OIL PAN	18
	1.11	VALVETRAIN	19-20
	1.12	IGNITION	21
	1.13	PISTON, CONNECTING ROD, PISTON RINGS	22
	1.14	ENGINE ELECTRICAL	23-24
	1.15	ENGINE ALTERNATOR	25
2. TRANSMISSION	2.0	TRANSMISSION RELATED PARTS	26
	2.1	CASE AND EXTERNAL PARTS	26-27
	2.2	COUNTERSHAFT	28-29
	2.3	INPUT SHAFT	30-31
	2.4	SHIFTING FORK	32-33
	2.5	SHIFTER CONTROL	34-35
	2.6	OPEN DIFFERENTIAL	36
3. CHASSIS	3.0	VEHICLE RELATED PARTS	37
	3.1	FRAME, ROLL CAGE	37-38
	3.2	ENGINE MOUNT	39
	3.3	EXHAUST SYSTEM	40
	3.4	GEAR SHIFT MECHANISM	41-42
	3.5	STEERING ASSEMBLY	43-44
	3.6	FOOT CONTROLS, PARKING BRAKE ASSEMBLY	45-48
	3.7	SUSPENSION	49-50
	3.8	DRIVELINE	51-54
	3.9	FUEL SYSTEM, FUEL TANK, AIR INTAKE	55-57
	3.10	RADIATOR, COOLANT SYSTEM	58-59
	3.11	PLASTIC BODY AND INTERIOR PARTS	60-62
	3.12	ELECTRICAL PARTS	63-65
	3.13	SEATS, SAFETY BELTS	66

# 1. ENGINE

## 1.1 COMPLETE ENGINE AND ENGINE REBUILD KIT

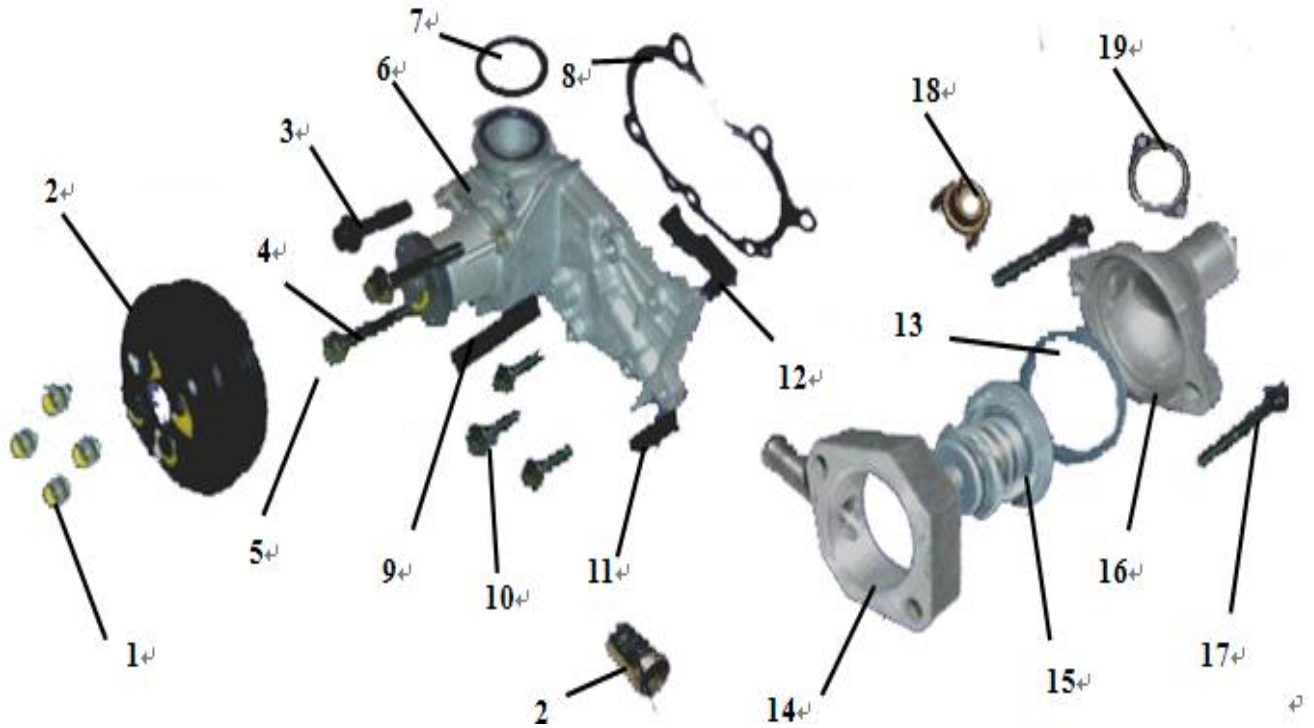


KITS			
REFERENCE ITEMS INCLUDED	KIT PART NUMBER	DESCRIPTION	QTY
2 - 55	311-0129	COMPLETE 1100CC ENGINE REBUILD KIT	1
ITEMS SOLD SEPARATELY			
ITEM #	PART NUMBER	DESCRIPTION	QTY
1	472-0000E01AA	COMPLETE 1100CC ENGINE ASSY	1
REFERENCE ONLY ITEMS			
REFERENCE ITEM	PART NUMBER	DESCRIPTION	QTY
1	472-0000E01AA	COMPLETE 1100CC ENGINE ASSY	1
2	372-1307015	WATER PUMP "O" RING	1
3	372-1307041	WATER PUMP WASHER	1
4	372-1307018	SEAL STRIP 2	1
5	372-1307019	SEALSTRIP 3	1
6	372-1307012	SEAL STRIP1	1
7	GB50-18	RING,O RUBBER	1
8	372-1306016	THERMOSTAT	1
9	372-1306018	THERMOSTAT HOUSING GASKET	1
10	372-1002023	BOLT-MAIN BEARING CAP	10
11	372-1002045	CAP-OIL CONTROL	1
12	372-1005015	CRANKSHAFT FRONT OIL SEAL	1
13	372-1005033	NEEDLE BEARING	1
14	372-1005032	WOODRUFF KEY	1
15	372-1005016	SHIM PLATE	2
16	372-1DF1005010	MAIN BEARING	4
17	372-1005036	PIN DOWEL	1
18	372-1005030	REAR MAIN OIL SEAL	1
19	472-1008033	EXHAUST MANIFOLD GASKET	1
20	S11-1129021JA	THROTTLE BODY GASKET	1
21	472-1008021	UPPER INTAKE MANIFOLD GASKET	1
22	472-1008012	INTAKE MANIFOLD GASKET	1
23	372-1011021	OIL PUMP GASKET	1
24	372-1010017	OIL STRAINER GASKET	1
25	372-1010010	OIL STRAINER	1

## 1.1 COMPLETE ENGINE AND ENGINE REBUILD KIT

REFERENCE ONLY ITEMS			
REFERENCE ITEM	PART NUMBER	DESCRIPTION	QTY
26	372-1003051	CYLINDER HEAD BOLT	10
27	372-1003052	CYLINDER HEAD BOLT WASHER	10
28	372-1003023	VALVE GUIDE	16
29	372-1003022	INTAKE VALVE SEAT INSERT	8
30	372-1003021	INTAKE VALVE SEAT INSERT	8
31	472-1003040AB	CYLINDER HEAD GASKET	1
32	372-1003067	BLOCK COVER	1
33	372-1003066	CAMSHAFT OIL SEAL	1
34	372-1003024	PLUG-BOWL SHAPE	1
35	372-1003028	PLUG	1
36	372-1003076	WATER PROOF BUSHING	1
37	472-1003036	VALVE COVER GASKET	1
38	372-1007030	TENSIONING PULLEY ASSY	1
39	372-1007017	ADJUSTMENT WASHER	16
40	372-1007018	VALVE LIFTER	16
41	372-1007014BA	UPPER VALVE SPRING SEAT	16
42	372-1007013	VALVE SPRING	16
43	372-1007020	VALVE SEAL	16
44	372-1007016	LOWER VALVE SPRING SEAT	16
45	372-1007012	EXHAUST VALVE	8
46	372-1007081	TIMING BELT	1
47	372-1007011	INLET VALVE	8
48	372-1007014	UPPER VALVE SPRING SEAT	1
49	372-1004031	PISTON PIN	4
50	372-1004021CA	PISTON +0.50mm OVERSIZE	4
51	372-1004110	CONNECTING ROD ASSY	4
52	372-1004116	CONNECTING ROD BEARING	8
53	372.1DE1004030CA	PISTON RING ASSY +0.50mm OVERSIZE	4
54	S11-3707100	SPARK PLUG ASSY	4
55	S11-1200011BA	SINGLE EXHAUST GASKET	1

## 1.2 COOLING SYSTEM



KITS			
REFERENCE ITEMS INCLUDED	KIT PART NUMBER	DESCRIPTION	QTY
1,2	311-0001	WATER PUMP PULLEY KIT	1
7,8,9,11,12	311-0002	WATER PUMP SEAL KIT	1
6,7,8,9,11,12,	311-0003	WATER PUMP KIT	1
3,4,5,10,17	311-0004	BOLT KIT	1
13,15	311-0005	THERMOSTAT KIT	1
ITEMS SOLD SEPARATELY			
ITEM #	PART NUMBER	DESCRIPTION	QTY
14	372-1306016	SEAT-THERMOSTAT OUTER	1
16	372-1306001	SEAT- THERMOSTAT	1
18	372-1306012	INNER SEAT-THERMOSTAT ASSY	1
19	372-1306018	THERMOSTAT HOUSING GASKET	1
20	372-1306017	MINOR CYCLE WATER PIPE	1

## 1.2 COOLING SYSTEM

REFERENCE ONLY ITEMS			
REFERENCE ITEM	PART NUMBER	DESCRIPTION	QTY
1	Q1400612	HEXAGON FLANGE BOLT	4
2	372-1307014	WATER PUMP PULLEY	1
3	Q1840840	HEXAGON FLANGE BOLT	1
4	Q1840855	BOLT(M8*55)	3
5	Q1840865	HEXAGON FLANGE BOLT	1
6	372-1307010	WATER PUMP SET	1
7	372-1307015	WATER PUMP "O" RING	1
8	372-1307041	WATER PUMP WASHER	1
9	372-1307018	SEAL STRIP 2	1
10	Q1840825	BOLT	11
11	372-1307019	SEALSTRIP 3	1
12	372-1307012	SEAL STRIP1	1
13	GB50-18	RING,O RUBBER	1
14	372-1306016	THERMOSTAT	1
15	372-1306020	THERMOSTAT ASSY	1
16	372-1306001	SEAT-THERMOSTAT	1
17	Q1840850	HEXAGON FLANGE BOLT	2
18	372-1306012	INNER SEAT-THERMOSTAT ASSY	1
19	372-1306018	THERMOSTAT HOUSING GASKET	1
20	372-1306017	MINOR CYCLE WATER PIPE	1

### 1.3 CYLINDER BLOCK



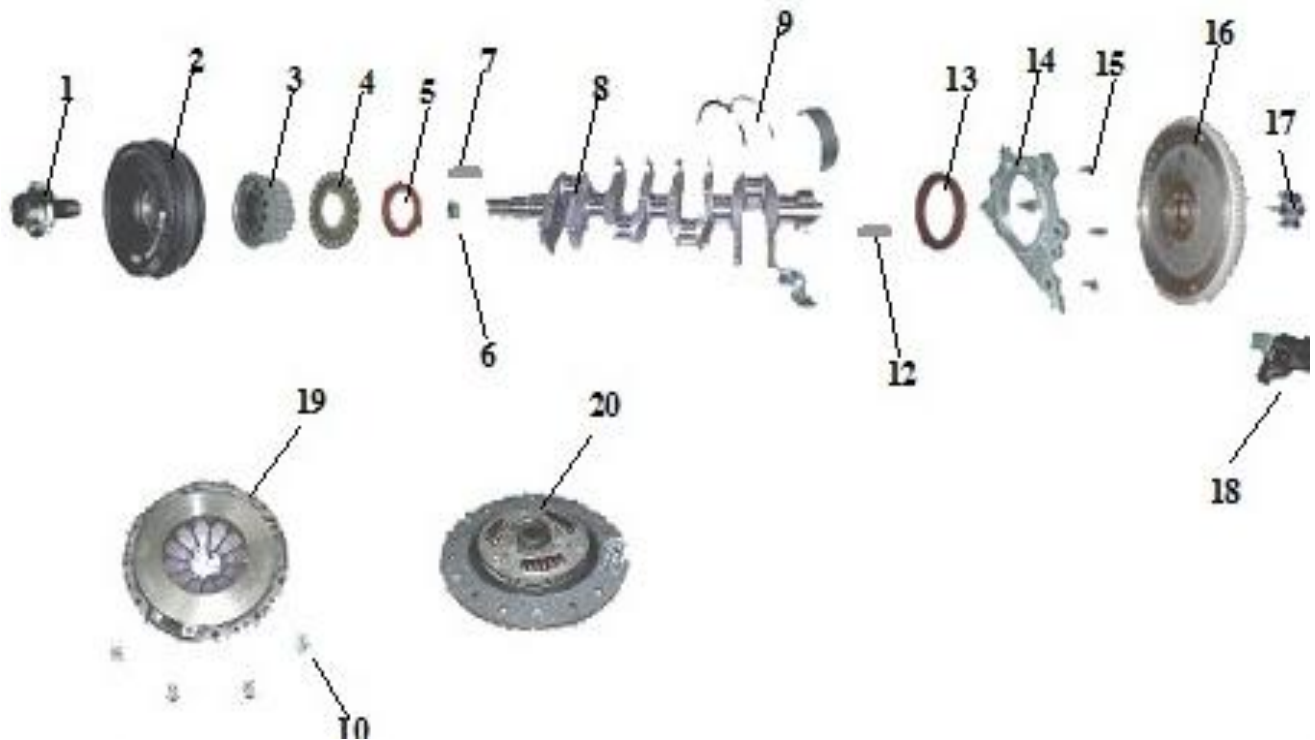
KITS			
REFERENCE ITEMS INCLUDED	KIT PART NUMBER	DESCRIPTION	QTY
1,2,3,4,5,6,7,8,9,10,11,12,13,14	311-0037	CYLINDER BLOCK ASSY	1
ITEMS SOLD SEPARATELY			
ITEM #	PART NUMBER	DESCRIPTION	QTY
1	472-1002010	CYLINDER BLOCK	1
2	372-1002037	POSITION PIN	1
3	372-1002046	CRANKCASE VENTILATION PIPE	1
4	372-1002044	CYLINDER HEAD SEAL PLUG	1
6	372-1002060	KNOCK SENSOR	1
7	372-1002036	POSITION PIN	1
8	S11-3810010	OIL PRESSURE SWITCH	1
9	11G10GB308	BALL-STEEL	1
10	372-1002024	PLUG	1
11	372-1002023	BOLT-MAIN BEARING CAP	1
12	372-1002045	CAP-OIL CONTROL	1
13	372-1012021	CONNECTOR-OIL FILTER	1
14	472-1003027	PIPE-CRANKCASE VENTILATION	1

### 1.3 CYLINDER BLOCK

REFERENCE ONLY ITEMS			
REFERENCE ITEM	PART NUMBER	DESCRIPTION	QTY
1	472-1002010	CYLINDER BLOCK	1
2	372-1002037	POSITION PIN	6
3	372-1002046	CRANKCASE VENTILATION PIPE	1
4	372-1002044	CYLINDER HEAD SEAL PLUG	4
5	Q1840830	HEXAGON FLANGE BOLT	1
6	372-1002060	KNOCK SENSOR	1
7	372-1002036	POSITION PIN	2
8	S11-3810010	OIL PRESSURE SWITCH	1
9	11G10GB308	BALL-STEEL	2
10	372-1002024	PLUG	7
11	372-1002023	BOLT-MAIN BEARING CAP	10
12	372-1002045	CAP-OIL CONTROL	1
13	372-1012021	CONNECTOR-OIL FLITER	1
14	472-1003027	PIPE-CRANKCASE VENTILATION	1
15	472-0000E01AA	COMPLETE 1100CC ENGINE ASSY	1



## 1.4 CRANKSHAFT

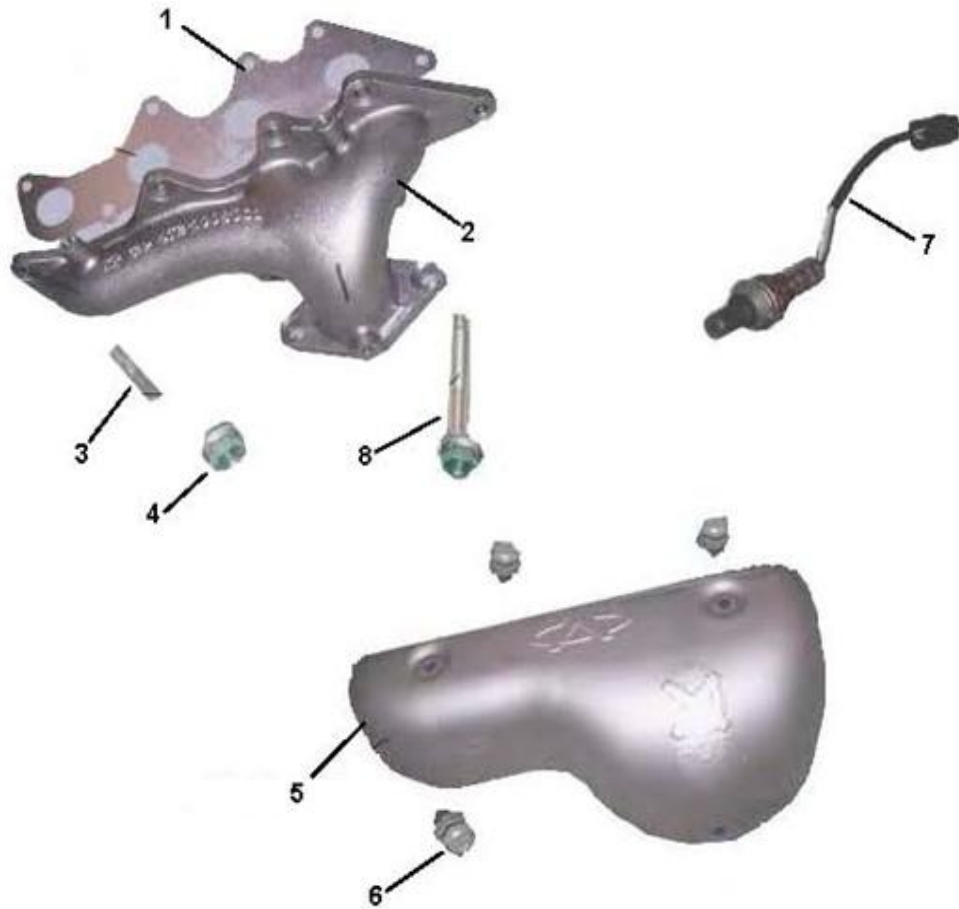


KITS			
REFERENCE ITEMS INCLUDED	KIT PART NUMBER	DESCRIPTION	QTY
1,2,7	311-0007	HARMONIC BALANCER KIT	1
8,9	311-0038	CRANKSHAFT ASSY	1
5,13	311-0009	SEAL KIT	1
13,14,15	311-0010	REAR OIL SEAL CASE ASSY	1
10,19,20	345-0001	CLUTCH ASSEMBLY KIT	1
ITEMS SOLD SEPARATELY			
ITEM #	PART NUMBER	DESCRIPTION	QTY
3	372-1005018	CRANKSHAFT TIMING GEAR	1
4	372-1005017	TOOTHED BELT BAFFLE	1
5	372-1005015	CRANKSHAFT FRONT OIL SEAL	1
6	372-1005033	NEEDLE BEARING	1
7	372-1005032	WOODRUFF KEY	1
16	372-1005050	FLYWHEEL ASSY	1
17	372-1005054	LOCK-FLY WHEEL BOLT	1
18	S11-1005117	CRANKSHAFT POSITION SENSOR	1
19	S11-1601020CA	PRESSURE PLATE	1
20	S11-1601030CA	CLUTCH	1

## 1.4 CRANKSHAFT

REFERENCE ONLY ITEMS			
REFERENCE ITEM	PART NUMBER	DESCRIPTION	QTY
1	372-1005031	PULLEY BOLT	1
2	372-1005040	TORSION SHOCK ABSORBER ASSY	1
3	372-1005018	CRANKSHAFT TIMING GEAR	1
4	372-1005017	TOOTHED BELT BAFFLE	1
5	372-1005015	CRANKSHAFT FRONT OIL SEAL	1
6	372-1005033	NEEDLE BEARING	1
7	372-1005032	WOODRUFF KEY	1
8	472-1005010	CRANKSHAFT ASSY	1
9	372-1005016	SHIM PLATE	2
10	S11-1601101	COVER SET BOLT	6
12	372-1005036	PIN DOWEL	1
13	372-1005030	REAR MAIN OIL SEAL	1
14	372-1005021	REAR OIL SEAL BRACKET	1
15	Q1840820	HEXAGON FLANGE BOLT	5
16	372-1005050	FLYWHEEL ASSY	1
17	372-1005054	LOCK-FLY WHEEL BOLT	6
18	S11-1005117	CRANKSHAFT POSITION SENSOR	1
19	S11-1601020CA	PRESSURE PLATE	1
20	S11-1601030CA	CLUTCH	1

## 1.5 EXHAUST MANIFOLD



KITS			
REFERENCE ITEMS INCLUDED	KIT PART NUMBER	DESCRIPTION	QTY
1,2,3,4,5,6,8	311-0039	EXHAUST MANIFOLD KIT	1
ITEMS SOLD SEPARATELY			
ITEM #	PART NUMBER	DESCRIPTION	QTY
1	472-1008033	EXHAUST MANIFOLD GASKET	1
7	S11-1205110JA	OXYGEN SENSOR	1
REFERENCE ONLY ITEMS			
REFERENCE ITEM	PART NUMBER	DESCRIPTION	QTY
1	472-1008033	EXHAUST MANIFOLD GASKET	1
2	472-1008031	EXHAUST MANIFOLD	1
3	Q1200825F3	STUD	6
4	Q33008	HEXAGON NUT	6
5	472-1008044	HEAT INSULATOR	1
6	Q1460612	HEXAGON FLANGE BOLT	4
7	S11-1205110JA	OXYGEN SENSOR	2
8	Q1200835F3	STUD	1

## 1.6 INTAKE SYSTEM



KITS			
REFERENCE ITEMS INCLUDED	KIT PART NUMBER	DESCRIPTION	QTY
1,2,3,4,5,6,7,8,12,13,14,15,27,28,29	357-0004	INTAKE MANIFOLD KIT	1
9,10,11	357-0005	INJECTOR ASSY KIT	1
1,2,3	357-0006	THROTTLE BODY KIT	1
ITEMS SOLD SEPARATELY			
ITEM #	PART NUMBER	DESCRIPTION	QTY
2	S11-1129010JA	THROTTLE BODY	1
3	S11-1129021JA	THROTTLE BODY GASKET	1
5	372-1008043	ACCELERATOR CABLE BRACKET	1
6	S11-1109411	INTAKE TEMPERATURE AND PRESSURE SENSOR	1
11	S11-1121020JA	INJECTOR	1
14	472-1008021	GASKET-INTAKE MANIFOLD	1
27	472-1008012	INTAKE MANIFOLD GASKET	1

## 1.6 INTAKE SYSTEM

REFERENCE ONLY ITEMS			
REFERENCE ITEM	PART NUMBER	DESCRIPTION	QTY
1	Q1420625	HEXAGON HEAD BOLT	4
2	S11-1129010JA	THROTTLE BODY	1
3	S11-1129021JA	THROTTLE BODY GASKET	1
4	Q1840620	HEXAGON FLANGE BOLT	4
5	372-1008043	ACCELERATOR CABLE BRACKET	1
6	S11-1109411	INTAKE TEMPERATURE AND PRESSURE SENSOR	1
7	Q1400416	HEXAGON FLANGE BOLT	1
8	472-1008011	UPPER INTAKE MANIFOLD	1
9	Q1420645	HEXAGON FLANGE BOLT	2
10	S11-1121010JA	FUEL RAIL	1
11	S11-1121020JA	INJECTOR	4
12	Q1200835F3	STUD	3
13	Q1200828F3	STUD	2
14	472-1008021	UPPER INTAKE MANIFOLD GASKET	1
15	Q1200855F3	STUD	1
16	472-1008041	INTAKE MANIFOLD FRONT BRACKET	1
17	372-1008042	INTAKE MANIFOLD REAR BRACKET	1
18	472-1014110	BRACKET	1
19	Q1400612	HEXAGON FLANGE BOLT	2
20	472-1014122	CRANKCASE VENTILATION PIPE(2)	1
21	S11-1109416BA	HOSE-PVC VALVE TO THE INTAKE PIPE	1
22	472-1014125	CRANKCASE VENTILATION PIPE(1)	1
23	Q1840816	HEXAGON FLANGE BOLT	5
24	372-1014130	CRANKCASE VENTILATION PIPE(3)	1
25	Q1840820	HEXAGON FLANGE BOLT	2
26	S11-1108210DA	CABLE-ACCL	1
27	472-1008012	INTAKE MANIFOLD GASKET	1
28	472-1008013	UPPER INTAKE MANIFOLD	1
29	372-1107051	THROTTLE POSITION SENSOR	1
30	472-1014123	CRANKCASE BLEED PIPE3	1

## 1.7 OIL PUMP



KITS			
REFERENCE ITEMS INCLUDED	KIT PART NUMBER	DESCRIPTION	QTY
2,3,4	311-0016	DIP STICK TUBE ASSY.	1
5,6,7,8,15	311-0017	OIL PUMP ASSY	1
10,11,12,13,14	311-0018	OIL PUMP PICKUP ASSY.	1
ITEMS SOLD SEPARATELY			
ITEM #	PART NUMBER	DESCRIPTION	QTY
1	372-1012010	OIL FILTER	1
5	372-1011021	OIL PUMP GASKET	1
10	372-1010017	OIL STRAINER GASKET	1
REFERENCE ONLY ITEMS			
REFERENCE ITEM	PART NUMBER	DESCRIPTION	QTY
1	372-1012010	OIL FILTER	1
2	372-1009130	OIL DIP STICK	1
3	372-1009120	OIL DIP STICK PIPE	1
4	372-1011055	SEAL STRIP	1
5	372-1011021	OIL PUMP GASKET	1
6	372-1011030	OIL PUMP	1
7	Q1840825	BOLT	1
8	Q1840855	BOLT(M8x55)	2
9	Q1420612	HEXAGON HEAD BOLT	17
10	372-1010017	OIL STRAINER GASKET	1
11	Q1200616	STUD	2
12	Q33006	HEXAGON NUT	2
13	372-1010010	OIL STRAINER	1
14	Q1840610	HEXAGON HEAD BOLT	1
15	Q1840830	HEXAGON HEAD BOLT	4

## 1.8 CYLINDER HEAD



KITS			
REFERENCE ITEMS INCLUDED	KIT PART NUMBER	DESCRIPTION	QTY
3,4	311-0043	HEAD BOLT KIT	1
8,9,10	311-0044	VALVE GUIDE KIT	1
20,21,22,25	311-0045	FREEZE PLUG KIT	1
ITEMS SOLD SEPARATELY			
ITEM #	PART NUMBER	DESCRIPTION	QTY
5	S11-3808013	WATER TEMP SENSOR	1
6	S11-1003069	CAMSHAFT POSITION SENSOR	1
11	472-1003040AB	CYLINDER HEAD GASKET	1
15	372-1003066	CAMSHAFT OIL SEAL	1
16	472-1003010	CYLINDER HEAD	1
17	372-1003063	CAMSHAFT BEARING CAP POSITION COVER	1
18	S11-3808010	WATER TEMP SENSOR	1
26	472-BJ1003001	CYLINDER HEAD COMPLETE	1

## 1.8 CYLINDER HEAD

REFERENCE ONLY ITEMS			
REFERENCE ITEM	PART NUMBER	DESCRIPTION	QTY
1	372-1003074	SPARK PLUG ASSY	4
2	Q1400638	HEXAGON HEAD BOLT	21
3	372-1003051	CYLINDER HEAD BOLT	10
4	372-1003052	CYLINDER HEAD BOLT WASHER	10
5	S11-3808013	WATER TEMP SENSOR	1
6	S11-1003069	CAMSHAFT POSITION SENSOR	1
7	Q1400816	HEXAGON FLANGE BOLT	1
8	372-1003023	VALVE GUIDE	16
9	372-1003022	INTAKE VALVE SEAT INSERT	8
10	372-1003021	INTAKE VALVE SEAT INSERT	8
11	472-1003040AB	CYLINDER HEAD GASKET	1
12	372-1003202RA	FRONT ENGINE HANGER	1
13	Q1840816	HEXAGON HEAD BOLT	2
14	372-1003067	BLOCK COVER	1
15	372-1003066	CAMSHAFT OIL SEAL	1
16	472-1003010	CYLINDER HEAD	1
17	372-1003063	CAMSHAFT BEARING CAP POSITION COVER	10
18	S11-3808010	WATER TEMP SENSOR	1
19	372-1003201BA	REAR HANGER	1
20	372-1003026	FREEZE PLUG	3
21	372-1003024	PLUG-BOWL SHAPE	1
22	372-1003028	PLUG	1
23	372-1003038	STUD	1
24	372-1003076	WATER PROOF BUSHING	1
25	372-1003025	PLUG	1
26	472-BJ1003001	CYLINDER HEAD COMPLETE	1



## 1.9 VALVE COVER



KITS			
REFERENCE ITEMS INCLUDED	KIT PART NUMBER	DESCRIPTION	QTY
1,2,3,4,5,6	311-0046	VALVE COVER SET	1
ITEMS SOLD SEPARATELY			
ITEM #	PART NUMBER	DESCRIPTION	QTY
1	372-1003090	OIL FILLER CAP	1
2	Q2540616	VALVE COVER SCREW	1
3	472-1003075	ENGINE VALVE COVER	1
5	472-1003036	VALVE COVER GASKET	1
7	KN103320000	SPARK PLUG O RING SEAL	1
REFERENCE ONLY ITEMS			
REFERENCE ITEM	PART NUMBER	DESCRIPTION	QTY
1	372-1003090	OIL FILLER CAP	1
2	Q2540616	VALVE COVER SCREWS	8
3	472-1003075	ENGINE VALVE COVER	1
4	472-1003030	ENGINE ROCKER COVER	1
5	472-1003036	VALVE COVER GASKET	1
6	Q1460625	HEXAGON HEAD BOLT	5
7	KN103320000	SPARK PLUG O RING SEAL	4

## 1.10 OIL PAN



KITS			
REFERENCE ITEMS INCLUDED	KIT PART NUMBER	DESCRIPTION	QTY
1,2,3,4	311-0047	OIL PAN KIT	1
3,4	311-0024	OIL PLUG	1
REFERENCE ONLY ITEMS			
REFERENCE ITEM	PART NUMBER	DESCRIPTION	QTY
1	472-1009010A	OIL PAN	1
2	Q1420612	HEXAGON HEAD BOLT	17
3	372-1009017	OIL PLUG WASHER	1
4	372-1009014	DRAIN PLUG	1

## 1.11 VALVETRAIN

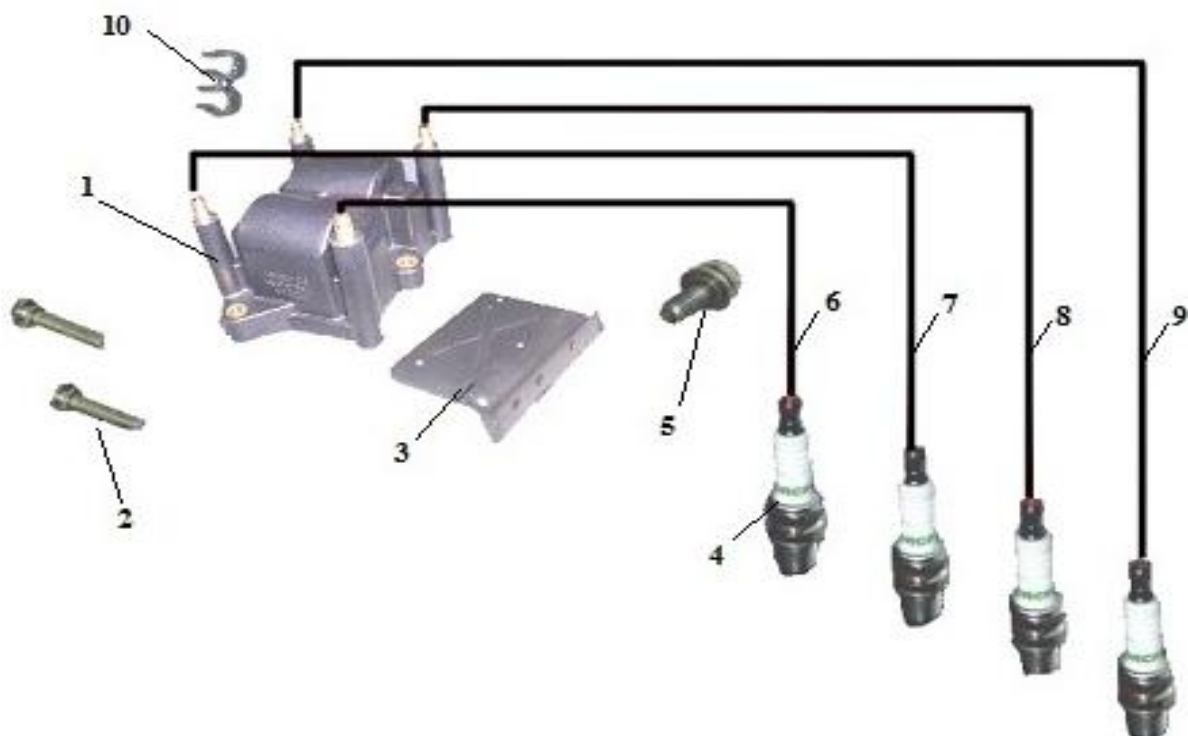


KITS			
REFERENCE ITEMS INCLUDED	KIT PART NUMBER	DESCRIPTION	QTY
7,8,9,10,11,12,31	311-0049	INTAKE CAMSHAFT KIT	1
13,14,15,16,17,18,19	311-0050	EXHAUST CAMSHAFT KIT	1
20,21,22,23,24,25,26,27,28,33	311-0051	EXHAUST VALVE KIT	1
20,21,22,23,24,25,26,27,30,33	311-0052	INTAKE VALVE KIT	1
1,2	311-0029	TENSIONING PULLEY ASSY	1
4,35	311-0030	TIMING BELT SPROCKET COVER SET	1
3,5,6,36	311-0031	TIMING BELT SET	1
ITEMS SOLD SEPARATELY			
ITEM #	PART NUMBER	DESCRIPTION	QTY
29	372-1007081	TIMING BELT	1

## 1.11 VALVETRAIN

REFERENCE ONLY ITEMS			
REFERENCE ITEM	PART NUMBER	DESCRIPTION	QTY
1	372-1007030	TENSIONING PULLEY ASSY	1
2	Q1401045	HEXAGON HEAD BOLT	1
3	Q1400616	HEXAGON HEAD BOLT	3
4	372-1007040	TIMING GEAR COVER	1
5	Q1460625	HEXAGON HEAD BOLT	2
6	Q1460650	HEXAGON HEAD BOLT	2
7	Q43140	SHIELD-SHAFT SPRING RING	1
8	372-1006032	SADDLE PIPE WASHER	1
9	372-1006031	DRIVE RING	1
10	372-1006040	GEAR(DRIVEN)-INTAKE CAMSHAFT	1
11	372-1006030	INTAKE CAMSHAFT MAIN GEAR	1
12	472-1006020	INTAKE CAMSHAFT ASSY	1
13	372-1006071	HEXAGON HEAD BOLT	1
14	372-1006066	TIMING BELT SPROCKET	1
15	372-1006064	LOCK-CLUTCH HUB NUT	1
16	Q2180620	INNER HEXAGON HEAD BOLT	4
17	372-1006063	COUPLING FLANGE	1
18	372-1006062	EXHAUST CAMSHAFT GEAR	1
19	472-1006060	EXHAUST CAMSHAFT GEAR	1
20	372-1007017	ADJUSTMENT WASHER	16
21	372-1007018	VALVE LIFTER	16
22	372-1007019	VALVE LOCK BLOCK	32
23	372-1007021	EDDY SLEEVE	16
24	372-1007014BA	UPPER VALVE SPRING SEAT	16
25	372-1007013	VALVE SPRING	16
26	372-1007020	VALVE SEAL	16
27	372-1007016	LOWER VALVE SPRING SEAT	16
28	372-1007012	EXHAUST VALVE	8
29	372-1007081	TIMING BELT	1
30	372-1007011	INLET VALVE	8
31	372-1006042	GEAR PIN	1
32	372-1006067	STOPPER PIN	1
33	372-1007014	UPPER VALVE SPRING SEAT	1
34	Q673B155	CLAMP	1
35	472-1007042	LOWER TIMING GEAR COVER	1
36	480-1011062	HEXAGON HEAD BOLT	1

## 1.12 IGNITION



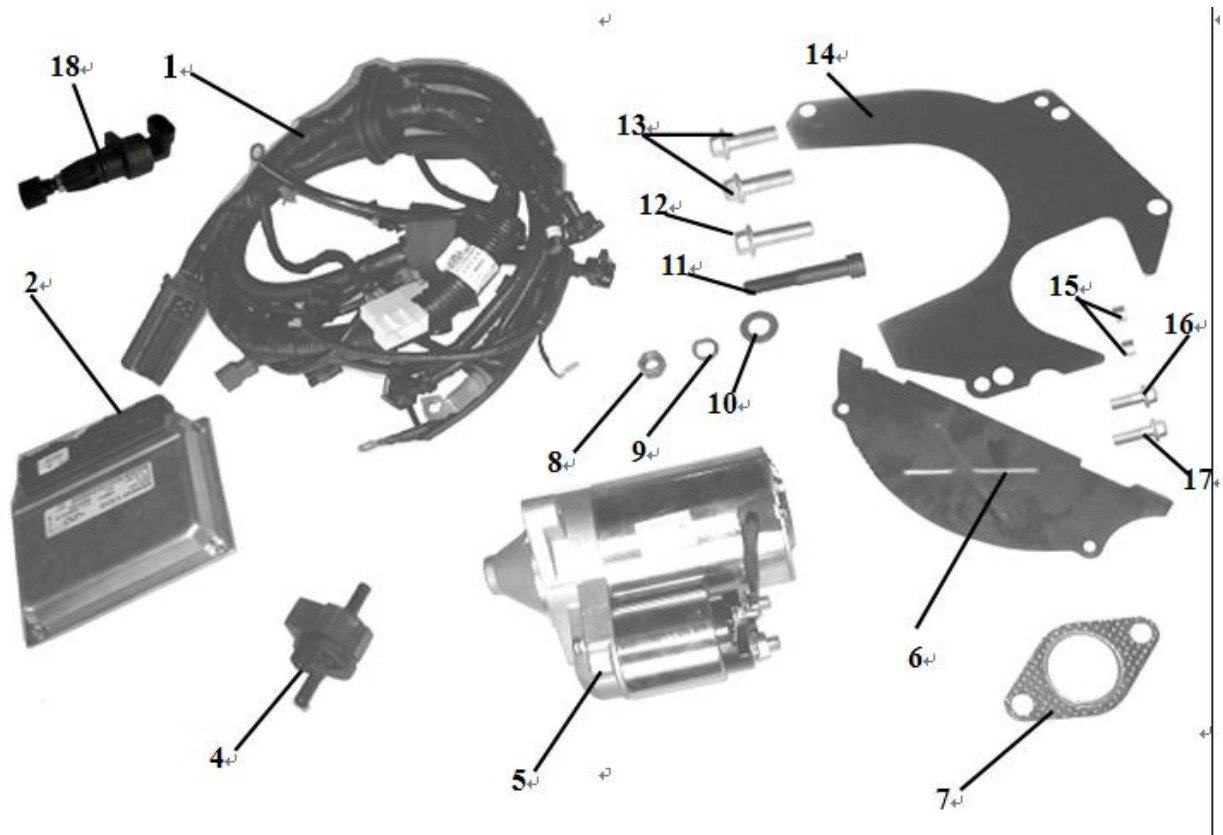
KITS			
REFERENCE ITEMS INCLUDED	KIT PART NUMBER	DESCRIPTION	QTY
6,7,8,9,10	311-0048	SPARK PLUG WIRE SET	1
ITEMS SOLD SEPARATELY			
ITEM #	PART NUMBER	DESCRIPTION	QTY
1	S11-3705110JA	COIL PACK	1
3	S11-3705001CA	COIL BRACKET	1
4	S11-3707100	SPARK PLUG	1
REFERENCE ONLY ITEMS			
REFERENCE ITEM	PART NUMBER	DESCRIPTION	QTY
1	S11-3705110JA	IGNITION COIL	1
2	Q2320525	SCREW AND SPRING WASHER UNIT	3
3	S11-3705001CA	IGNITION COIL BRACKET	1
4	S11-3707100	SPARK PLUG ASSY	4
5	Q1460820	HEXAGON HEAD BOLT	3
6	S11-3707020BA	HI.TENSION CORD NO.1	1
7	S11-3707030BA	HI.TENSION CORD NO.2	1
8	S11-3707040BA	HI.TENSION CORD NO.3	1
9	S11-3707050BA	HI.TENSION CORD NO.4	1
10	S11-3724183	CLIP	1

## 1.13 PISTON, CONNECTING ROD, PISTON RINGS



KITS			
REFERENCE ITEMS INCLUDED	KIT PART NUMBER	DESCRIPTION	QTY
1,2,4,5	311-0053	PISTON KIT STANDARD	1
1,2,4,6	311-0054	PISTON KIT +0.25mm OVERSIZE	1
1,2,4,7	311-0055	PISTON KIT +0.50mm OVERSIZE	1
ITEMS SOLD SEPARATELY			
ITEM #	PART NUMBER	DESCRIPTION	QTY
1	372-1004031	PISTON PIN	1
2	372-1004021AC	PISTON	1
3	372-1004110	CONNECTING ROD ASSY	4
4	372-1DF1004110	BEARING-CONNECTING ROD	1
5	372-1DE1004030	PISTON RINGS STANDARD	5
6	372-1DE1004030BA	PISTON RINGS +0.25mm OVERSIZE	5
7	372-1DE1004030CA	PISTON RINGS +0.50mm OVERSIZE	5
REFERENCE ONLY ITEMS			
REFERENCE ITEM	PART NUMBER	DESCRIPTION	QTY
1	372-1004031	PISTON PIN	4
2	372-1004021AC	PISTON	4
3	372-1004110	CONNECTING ROD ASSY	4
4	372-1DF1004110	CONNECTING ROD BEARING	8
5	372-1DE1004030	PISTON RING ASSY	5
6	372-1DE1004030BA	PISTON RING ASSY +0.25mm OVERSIZE	5
7	372-1DE1004030CA	PISTON RING ASSY +0.50mm OVERSIZE	5

## 1.14 ENGINE ELECTRICAL



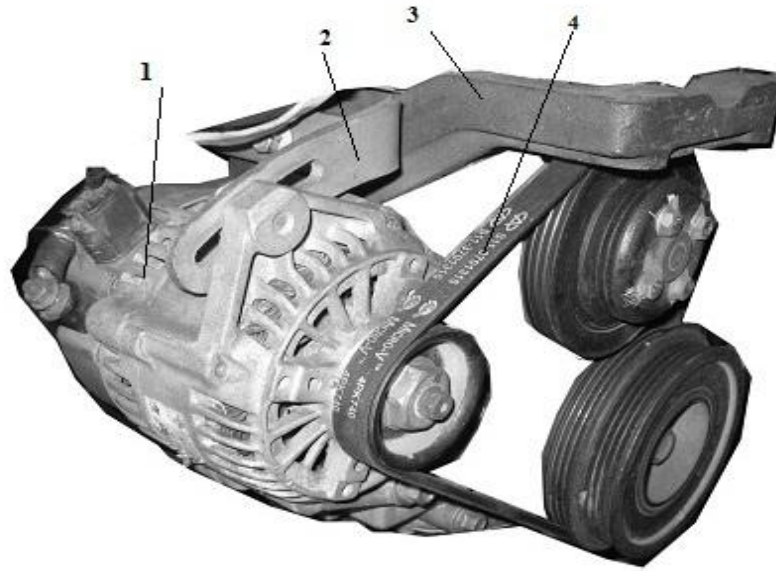
KITS			
REFERENCE ITEMS INCLUDED	KIT PART NUMBER	DESCRIPTION	QTY
6,11,12,13,14,15,16, 17	311-0036	FLYWHEEL COVER BOLT KIT	1
ITEMS SOLD SEPARATELY			
ITEM #	PART NUMBER	DESCRIPTION	QTY
1	S11-3724180CS-A	ENGINE HARNESS	1
2	S11-3605010JA-E4	ECU	1
4	S11-1208210JA	PRESSURE CONTROL VALVE (PCV)	1
5	S11-3708110GA	STARTER	1
6	S11-1700103	LOWER STEEL CUSHION	1
7	S11-1200011BA	SINGLE EXHAUST GASKET	1
14	372-1002030	UPPER STEEL CUSHION	1
18	S11-3802020	ELECTRIC ODOMETER SENSOR ASSY	1

## 1.14 ENGINE ELECTRICAL

REFERENCE ONLY ITEMS			
REFERENCE ITEM	PART NUMBER	DESCRIPTION	QTY
1	S11-3724180CS-A	ENGINE HARNESS	1
2	S11-3605010JA-E4	ECU	1
4	S11-1208210JA	CARBON CAN PCV	1
5	S11-3708110GA	STARTER	1
6	S11-1700103	LOWER STEEL CUSHION	1
7	S11-1200011BA	SINGLE EXHAUST GASKET	1
8	6172,1-M12-R/05	HEXAGON THIN NUTS M12	1
9	93-12/05	SINGLE COIL SPRING LOCK WASHERS.NORMAL TYPE $\phi 12$	1
10	95-12X24X2,5/05	PLAIN WASHERS	1
11	70,1-M12X75/05	HEXAGON SOCKET HEAD CAP SCREWS M12x75	1
12	Q218B1245	BOLT 12x45	1
13	Q1841240	BOLT 12x50	2
14	372-1002030	UPPER STEEL CUSHION	1
15	S11-3708111	LOCATION DOWEL	2
16	Q1840845	BOLT 8x45	2
17	Q1840850	HEXAGON FLANGE BOLT	1
18	S11-3802020	ELECTRIC ODOMETER SENSOR ASSY	1



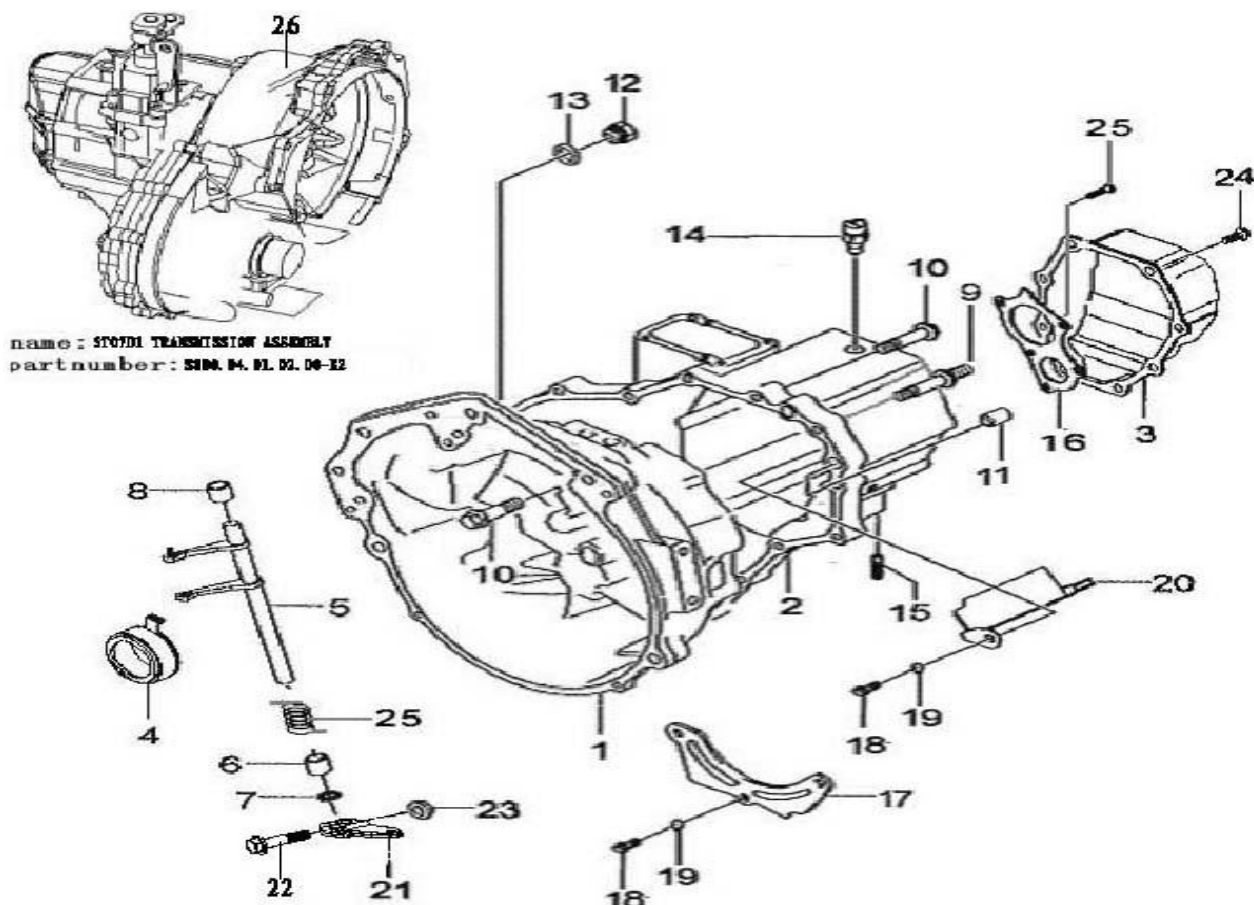
## 1.15 ENGINE ALTERNATOR



ITEMS SOLD SEPARATELY			
ITEM #	PART NUMBER	DESCRIPTION	QTY
1	S11-3701110BA	ALTERNATOR	1
2	S11-3701211BA	ALTERNATOR BRACKET	1
3	S11-1001415BA	REAR BRACKET	1
4	S11-3701315	V-RIBBED BELT	1
REFERENCE ONLY ITEMS			
REFERENCE ITEM	PART NUMBER	DESCRIPTION	QTY
1	S11-3701110BA	ALTERNATOR	1
2	S11-3701211BA	ALTERNATOR BRACKET	1
3	S11-1001415BA	REAR BRACKET	1
4	S11-3701315	V-RIBBED BELT	1

## 2. TRANSMISSION

### 2.1 CASE AND EXTERNAL PARTS

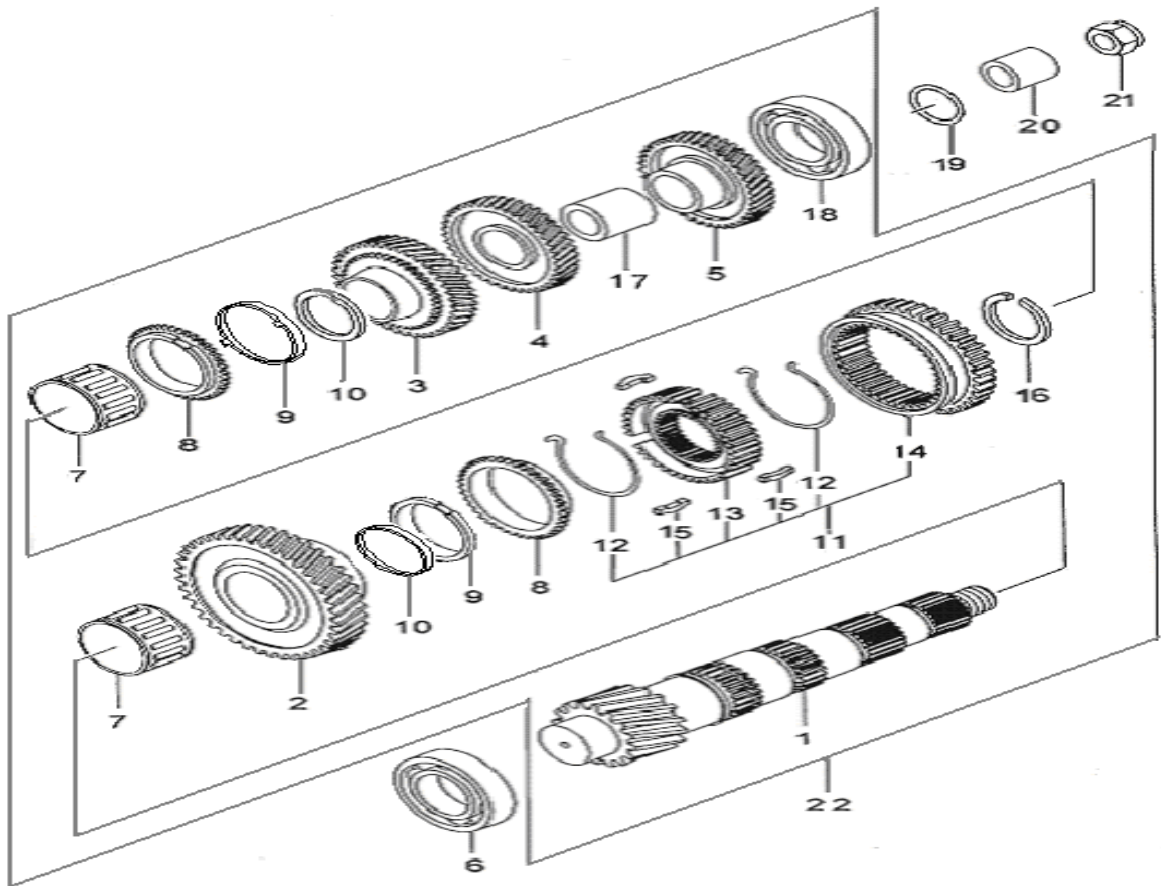


KITS			
REFERENCE ITEMS INCLUDED	KIT PART NUMBER	DESCRIPTION	Qty.
26	5T07D1-1700010	TRANSMISSION ASSY	1
4,5,6,7,8,21,23,25	324-0017	CLUTCH FORK ASSY.	1
12,13	324-0003	OIL FILL PLUG	1
9,10,11,15,24,25	324-0018	TRANSMISSION BOLT KIT	1
ITEMS SOLD SEPARATELY			
ITEM #	PART NUMBER	DESCRIPTION	Qty.
1	QR512-1701101	CLUTCH CASE	1
2	QR512-1701111	TRANSMISSION CASE	1
3	QR512-1701120	SIDE COVER	1
4	QR512-1602101	THROW OUT BEARING	1
14	5T07-3729010	BACK-UP LIGHT SWITCH	1
21	QR512-1602112	ROCKER CLUTCH	1

## 2.1 CASE AND EXTERNAL PARTS

REFERENCE ONLY ITEMS			
REFERENCE ITEM	PART NUMBER	DESCRIPTION	Qty.
1	QR512-1701101	CLUTCH CASE	1
2	4T08A1-1701111	CASE.TRANSMISSION	1
3	5T07-1701020	SIDE COVER	1
4	5T07-1702010	THROW OUT BEARING	1
5	5T07-1702020A	DECLUTCH FORK	1
6	5T07-1702004	CLUTCH FORK 2 SLEEVE	1
7	5T07-1702030	CLUTCH FORK SEAL	2
8	5T07-1702001	CLUTCH FORK 1 SLEEVE	1
9	QR512-1701103	DOUBLE-SCREW ROD	2
10	GB/T5789-1986	FLANGE BOLT M8x40	12
11	GB/T119—2000	LOCATING PIN	2
12	5T07-1701002	OIL SCREW PLUG	1
13	5T07-1701003	SCREW PLUG WASHER	2
14	5T07-3729010	BACK-UP LIGHT SWITCH	1
15	5T07-1701058A	DOUBLE-SCREW ROD	1
16	5T07-1701009	BEARING STOP PLATE	1
17	5T07-1701004	OIL-STOP PLATE	1
18	GB/T5781-2000	FLANGE BOLT M6x12	2
19	GB/T7246-1987	FLAT WASHER 6	4
20	5T07-1701400	OIL GROOVE	1
21	QR512-1602112	ROCKER CLUTCH	1
22	GB/T5789-1986	FLANGE BOLT M8x35	1
23	GB/T6177-2000	FLANGE NUT M8	1
24	5T07-1701603	SIDE COVER BOLT	8
25	QR512-1602113	DECLUTCH RELEASE SPRING	1
26	5T07D1-1700010	512 TRANSMISSION ASSY	1

## 2.2 COUNTERSHAFT

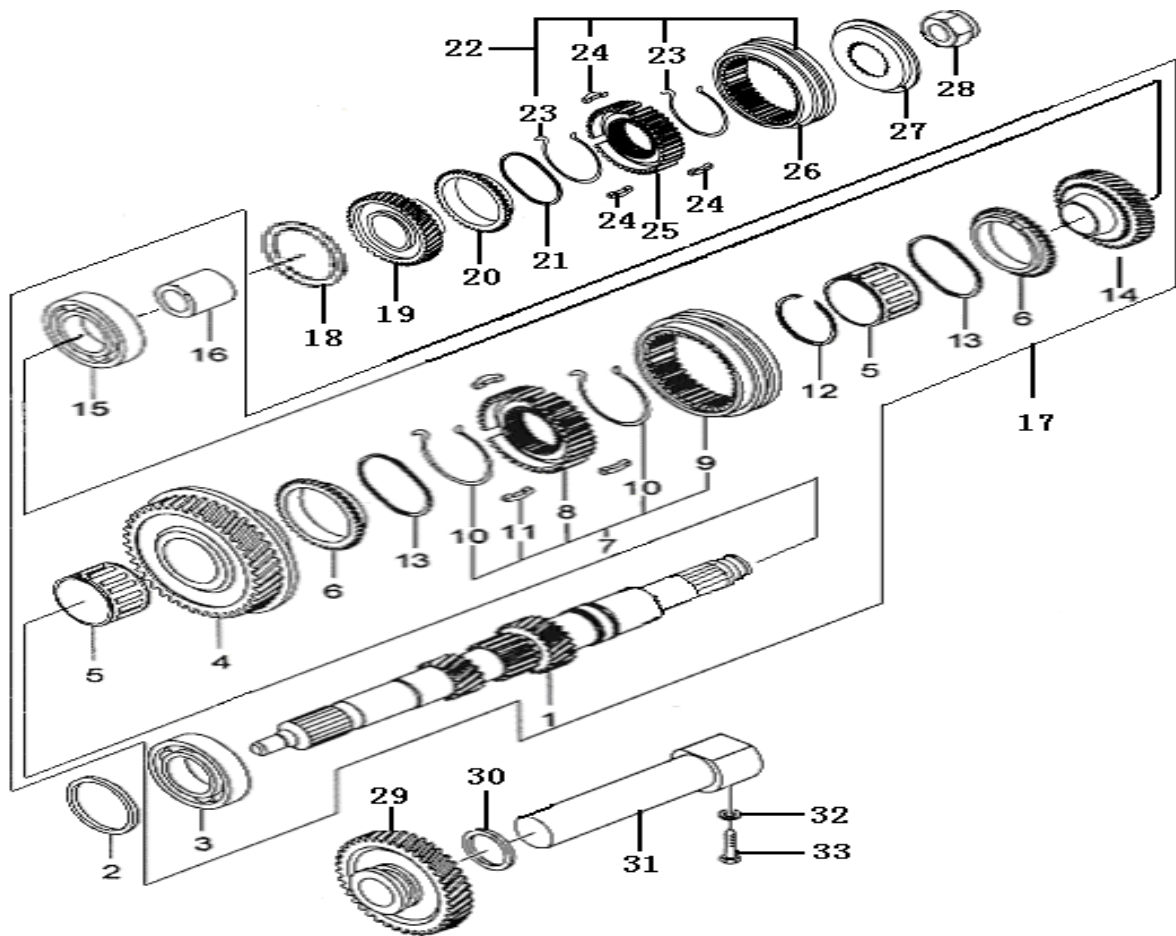


KITS			
REFERENCE ITEMS INCLUDED	KIT PART NUMBER	DESCRIPTION	Qty.
6,7,17,18	324-0005	BEARING KIT	1
6,19,20,21,22	324-0046	COUNTERSHAFT ASSY	1
ITEMS SOLD SEPARATELY			
ITEM #	PART NUMBER	DESCRIPTION	Qty.
21	MQC4-1701219	COUNTERSHAFT NUT	1

## 2.2 COUNTERSHAFT

REFERENCE ONLY ITEMS			
REFERENCE ITEM	PART NUMBER	DESCRIPTION	Qty.
1	QR512-1701401	COUNTERSHAFT	1
2	QR512-1701410	FIRST GEAR	1
3	QR512-1701420	DRIVEN GEAR SSSY.SECOND GEAR	1
4	QR512-1701441	DRIVENGEAR.THIRD GEAR	1
5	QR512-1701461	DRIVEN GEAR.FOURTH GEAR	1
6	5T07-1701610	OUTPUT SHAFT BEARING	1
7	5T07-1701240	NEEDLE BEARING OF 1ST&2ND GEAR	2
8	QR512-1701439	SYNCHRONIZER OUT RING OF 1ST&2ND GEAR	2
9	QR512-1701406	SYNCHRONIZER MIDDLE RING OF 1ST&2ND GEAR	2
10	QR512-1701435	SYNCHRONIZER NINNER RING OF 1ST&2ND GEAR	2
11	QR512-1701430	SYNCHRONIZER OF 1ST&2ND GEAR	1
12	QR512-1701433	SYNCHRONIZER SPRING OF 1ST&2ND GEAR	2
13	QR512-1701434	SYNCHRONIZER GEAR-HUB OF 1ST&2ND GEAR	1
14	QR512-1701431	SYNCHRONIZER GEAR-SLEEVE OF 1ST&2ND GEAR	1
15	QR512-1701432	SYNCHRONIZER GEAR BLOCK OF 1ST&2ND GEAR	3
16	5T07-1701205	SYNCHRONIZER RETAINER OF 1ST&2ND GEAR	1
17	5T07-1701202	SPACER OF 3RD&4TH GEAR	1
18	5T07-1701250	REAR BEARING OF OUTPUT SHAFT	1
19	QR512-1701187	ADJUSTING WASHER OF REAR BEARING	Demand
20	QR512-1701481	SLEEVE.COUNTERSHAFT	1
21	MQC4-1701219	COUNTERSHAFT NUT	1
22	4T08A1-1701400	COUNTERSHAFT ASSY	1

## 2.3 INPUT SHAFT

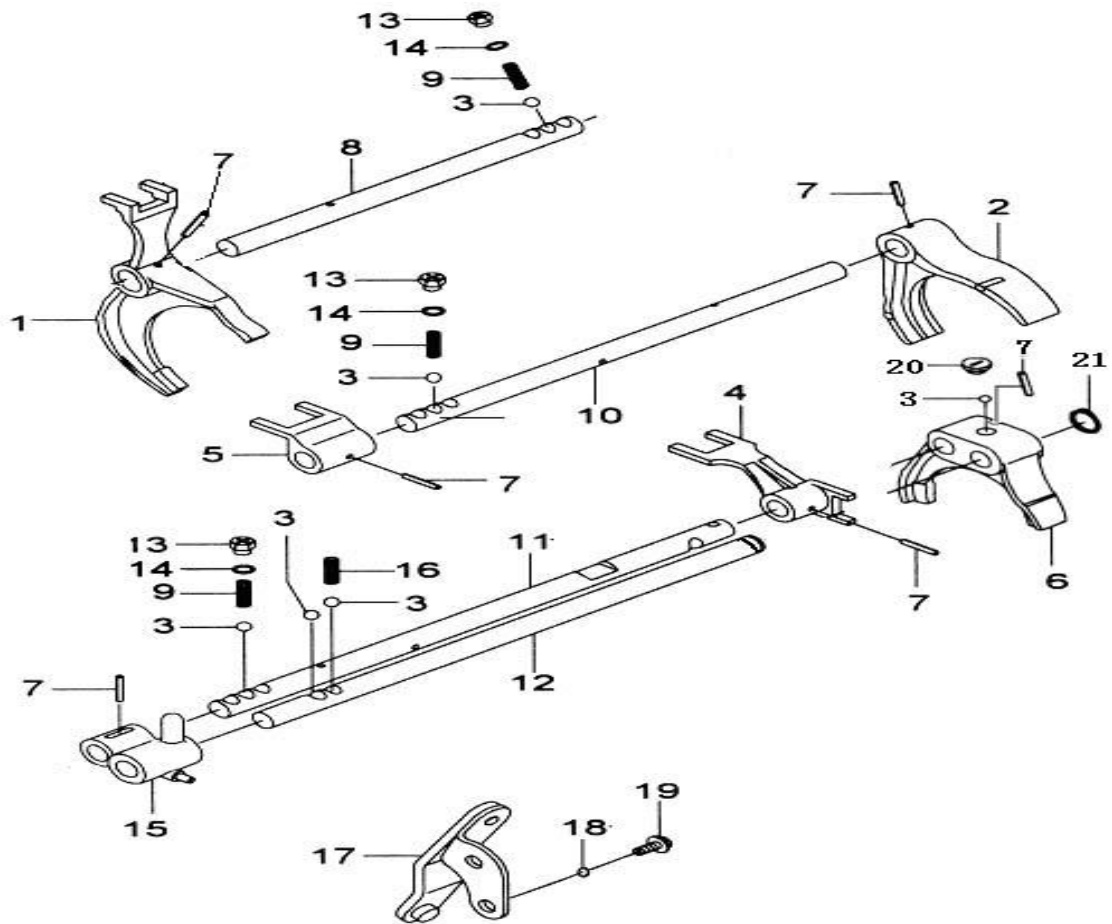


KITS			
REFERENCE ITEMS INCLUDED	KIT PART NUMBER	DESCRIPTION	Qty.
3,5,12,15	324-0019	BEARING KIT	1
17,18,19,20,21,22,23,24,25,26,27,28	324-0021	INPUT SHAFT ASSY.	1
ITEMS SOLD SEPARATELY			
ITEM #	PART NUMBER	DESCRIPTION	Qty.
28	QR512-1701298	NUT OF 5TH GEAR SYNCHRONIZER	1

## 2.3 INPUT SHAFT

REFERENCE ONLY ITEMS			
REFERENCE ITEM	PART NUMBER	DESCRIPTION	Qty.
1	QR512-1701201	INPUT SHAFT	1
2	5T07-1701080	INPUT SHAFT SEAL	1
3	4T08-1701130	BEARING 6204\YA\IP63	1
4	QR512-1701240	3TH GEAR ASSY	1
5	5T07-1701150	NEEDLE BEARING OF 3RD&4TH GEAR	2
6	QR512-1701257	SYNCHRONIZER RING OF 3TH&4TH&5TH	1
7	QR512-1701250	SYNCHRONIZER ASSY OF 3TH&4TH	1
8	QR512-1701252	SYNCHRONIZER GEAR-HUB OF 3TH&4TH	1
9	QR512-1701251	SYNCHRONIZER GEAR-SLEEVE OF 3TH&4TH	1
10	QR512-1701253	SYNCHRONIZER SPRING OF 3TH&4TH&5TH	1
11	QR512-1701254	SYNCHRONIZER GEAR BLOCK OF 3TH&4TH	3
12	5T07-1701103	SYNCHRONIZER RETAINER OF 3TH&4TH	1
13	QR512-1701258	SYNCHRONIZER WAVEFORM WASHER RING	1
14	QR512-1701260	4TH GEAR ASSY	1
15	5T07-1701110	BACK BEARING OF INPUT SHAFT	1
16	QR512-1701285	SPACER OF 5TH GEAR	1
17	QR512-1701200	INPUT SHAFT ASSY.	1
18	QR512-1701287	ADJUSTING WASHER OF REAR BEARING	Demand
19	QR512-1701280	5TH GEAR ASSY	1
20	QR512-1701257	SYNCHRONIZER RING OF 3TH&4TH&5TH	1
21	QR512-1701258	SYNCHRONIZER WAVEFORM WASHER RING	1
22	QR512-1701290	SYNCHRONIZER ASSY OF 5TH GEAR	1
23	QR512-1701254	SYNCHRONIZER SPRING OF 5TH GEAR	2
24	QR512-1701293	SYNCHRONIZER GEAR BLOCK OF 5TH	1
25	QR512-1701292	SYNCHRONIZER GEAR-HUB OF 5TH	1
26	QR512-1701291	SYNCHRONIZER GEAR-SLEEVE OF 5TH	1
27	QR512-1701294	SYNCHRONIZER RING OF 5TH GEAR	1
28	QR512-1701298	NUT OF 5TH GEAR SYNCHRONIZER	1
29	QR512-1701710	REVERSE GEAR	1
30	5T07-1701053	RING OF REVERSE GEAR	1
31	5T07-1701061A	SHAFT OF REVERSE GEAR	1
32	5T07-1701052	WASHER OF REVERSE GEAR SHAFT	1
33	5T07-1701057A	BOLT OF REVERSE GEAR SHAFT	1

## 2.4 SHIFTING FORK



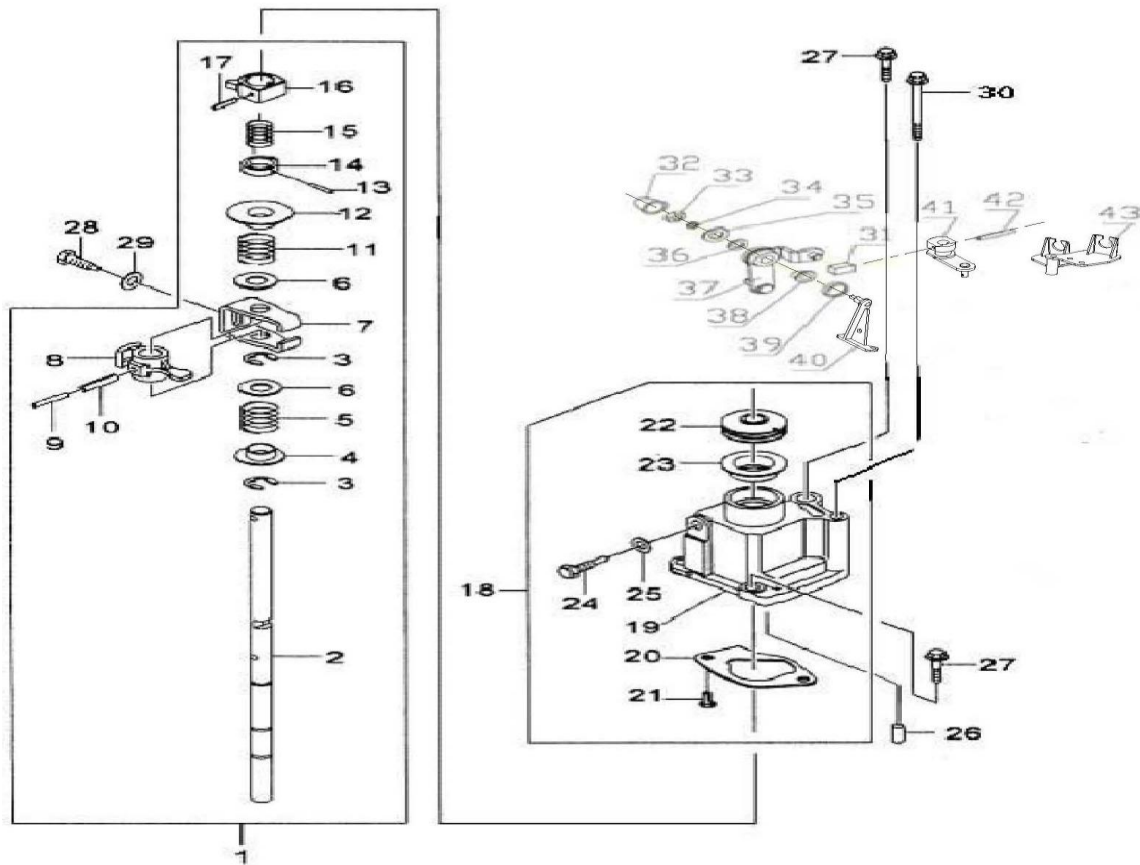
KITS			
REFERENCE ITEMS INCLUDED	KIT PART NUMBER	DESCRIPTION	Qty.
1,2,3,4,5,6,7,8,9,10,11,12,	324-0022	SHIFT FORKS & SHAFT ASSY	1
ITEMS SOLD SEPARATELY			
ITEM #	PART NUMBER	DESCRIPTION	Qty.
1	QR512-1702311	SHIFT FORK OF 1ST&2ND GEAR	1
2	5T07-1702041A	SHIFT FORK OF 3RD&4TH GEAR	1
3	GB/T308-2002	STEEL BALL7.9375	1
4	5T07-1702042A	SHIFT FORK OF 5TH GEAR	1
5	5T07-1702061A	SHIFT FORK OF 3RD&4TH GEAR	1
6	QR512-1702331	SHIFT FORK 5TH GEAR	1
9	5T07-1702067	SHIFT-FORK SHAFT SPRING	1



## 2.4 SHIFTING FORK

REFERENCE ONLY ITEMS			
REFERENCE ITEM	PART NUMBER	DESCRIPTION	Qty.
1	QR512-1702311	SHIFT FORK OF 1ST&2ND GEAR	1
2	QR512-1702321	SHIFT FORK OF 3RD&4TH GEAR	1
3	GB308-86 7.9375	STEEL BALL7.9375	6
4	QR512-1702332	SHIFT FORK OF 5TH GEAR	1
5	QR512-1702322	SHIFT FORK OF 3RD&4TH GEAR	1
6	QR512-1702331	SHIFT FORK 5TH GEAR	1
7	QR512-1702412	PIN 4.5x20	1
8	QR512-1702411	SHIFT-FORK SHAFT OF 1ST&2ND GEAR	1
9	QR512-1702511	SHIFT-FORK SHAFT SPRING	3
10	QR512-1702421	SHIFT-FORK SHAFT OF 3RD&4TH GEAR	1
11	QR512-1702431	SHIFT-FORK SHAFT OF 5TH GEAR	1
12	QR512-1702441	SHIFT-FORK SHAFT OF REVERSE GEAR	1
13	QR512-1702513	SHIFT-FORK SHAFT SCREW PLUG	3
14	QR512-1702512	WASHER OF SCREW PLUG	3
15	QR512-1702341	SHIFT FORK PIN OF REVERSE GEAR	1
16	QR512-1702518	SHIFT BLOCK SPRING	1
17	QR512-1702340	SHIFT ARM	1
18	95-8X16X1, 5/05	FLAT WASHER 8	2
19	QR512-1702228	BOLT OF SHIFT ARM	2
20	QR512-1702516	PLUG SCREW 5TH GEAR SHIFT FORK	1
21	QR512-1702514	SNAP RING REVERSE GEAR FORK SHAFT	1

## 2.5 SHIFTER CONTROL

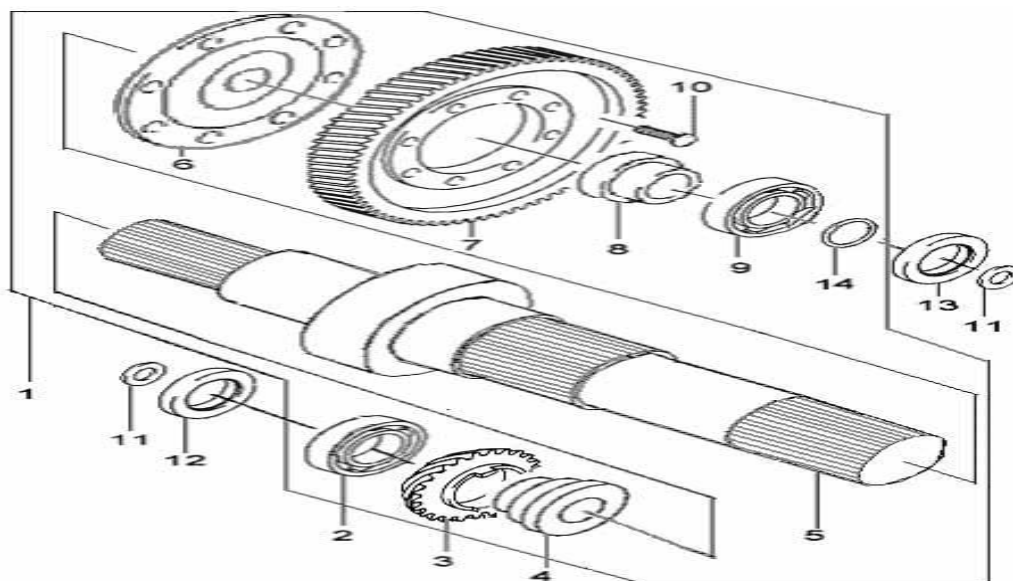


KITS			
REFERENCE ITEMS INCLUDED	KIT PART NUMBER	DESCRIPTION	Qty.
1,18,26,27,28,29,30	324-0008	SHIFTER CONTROL ASSY	1
31,32,33,34,35,36,37,38,39,40	324-0009	SHIFT ARM COMPLETE	1
27,30	324-0010	SHIFTER ASSY.BOLT KIT	1
ITEMS SOLD SEPARATELY			
ITEM #	PART NUMBER	DESCRIPTION	Qty.
41	KN101160030	SHIFT ARM BRACKET	1
42	GB/T879,1-2000 5x28	PIN 5x28	1
43	KN101090030	SHIFTER BRACKET	1

## 2.5 SHIFTER CONTROL

REFERENCE ONLY ITEMS			
REFERENCE ITEM	PART NUMBER	DESCRIPTION	Qty.
1	5T07-1702100	SHIFT-SELECT SHAFT ASSY	1
2	5T07-1702101A	SHIFT-SELECTING SHIFT	1
3	QR512-1702214	SNAP RING.STOP PLATE.SHIFT INTERLOCK	3
4	5T07-1702102	RELEASE-SPRING OF 1ST&2ND GEAR	1
5	5T07-1702103	RELEASE SPRING OF 1ST&2ND GEAR	1
6	5T07-1702104	SPRING-STOP PLATE	2
7	5T07-1702107A	STOP PLATE OF SHIFT INTERLOCK	1
8	5T07-1702105A	SHIFT-SELECT ARM.	1
9	QR512-1702113	SPRING PIN 3.5x28	1
10	5T07-1702106	PIN OF SHIFT-SELECT ARM	1
11	5T07-1702114A	RELEASE SPRING OF 5TH&REVERSE GEAR	1
12	5T07-1702112	RELEASE-SPRING SEAT OF 5TH&REVERSE GEAR	1
13	GB/T879.1-2000	PIN 3x22	1
14	5T07-1702108A	SEAT OF REVERSE GEAR SPRING	1
15	5T07-1702109A	LIMITING SPRING REVERSE GEAR	1
16	QR512-1702111A	LIMITING CAM.REVERSE GEAR	1
17	GB/T879.1-2000	PIN 5x22	1
18	5T07-1702070A	GUIDE CASE ASSY OF SHIFT-SELECT SHAFT	1
19	5T07-1702071A	GUIDE CASE OF SHIFT-SELECT SHAFT	1
20	5T07-1702072	STOP PLATE OF RELEASE SPRING	1
21	GB/T5789-1986	BOLT AM8x40	2
22	QR512-1702227	OIL SEAL.SHIFT-SELECT SHAFT	1
23	5T07-1702062	ANTI-DUST COVER OF SHIFT-SELECT SHAFT	1
24	5T07-1702065A	LIMITING BOLT OF REVERSE GEAR	1
25	5T07-1702066	WASHER.LIMITING BOLT.REVERSE GEAR	1
26	GB/T119—2000	PIN B 6x12	2
27	GB/T5789-1986	BOLT AM8x40	4
28	5T07-1702065A	LIMITING BOLT OF SHIFT	1
29	QR512-1702229	WASHER.LIMITING BOLT.REVERSE GEAR	1
30	GB/T5789-1986	BOLT AM8x75	1
31	5T07-1702063	SHIFT PUSHING BLOCK	1
32	5T07-1702062	ANTI-DUST COVER OF SHIFT-SELECT SHAFT	1
33	GB/T5789-1986	PREVAILING TORQUE HEX NUT WITH FLANGE M8	1
34	03.04.93-φ8/05	SINGLE COIL SPRING LOCK WASHERS,NORMAL TYPE φ8	1
35	5T07-1702046	BIG WASHER OF SHIFT ARM	1
36	5T07-1702045	SMALL WASHER OF SHIFT ARM	1
37	KN101170030	SHIFT ARM.COMPONENT	1
38	KN101170100	COPPER BUSHING	1
39	5T07-1702047	ANTI-DUST WASHER OF SHIFT ARM	1
40	5T07-1702220	SUPPORT ASSY.SHIFT ARM	1
41	KN101160030	SHIFT ARM BRACKET	1
42	GB/T879,1-2000 5x28	PIN 5x28	1
43	KN101090030	SHIFTER BRACKET	1
44	QR512-1701656	LIFTING HOOK	1

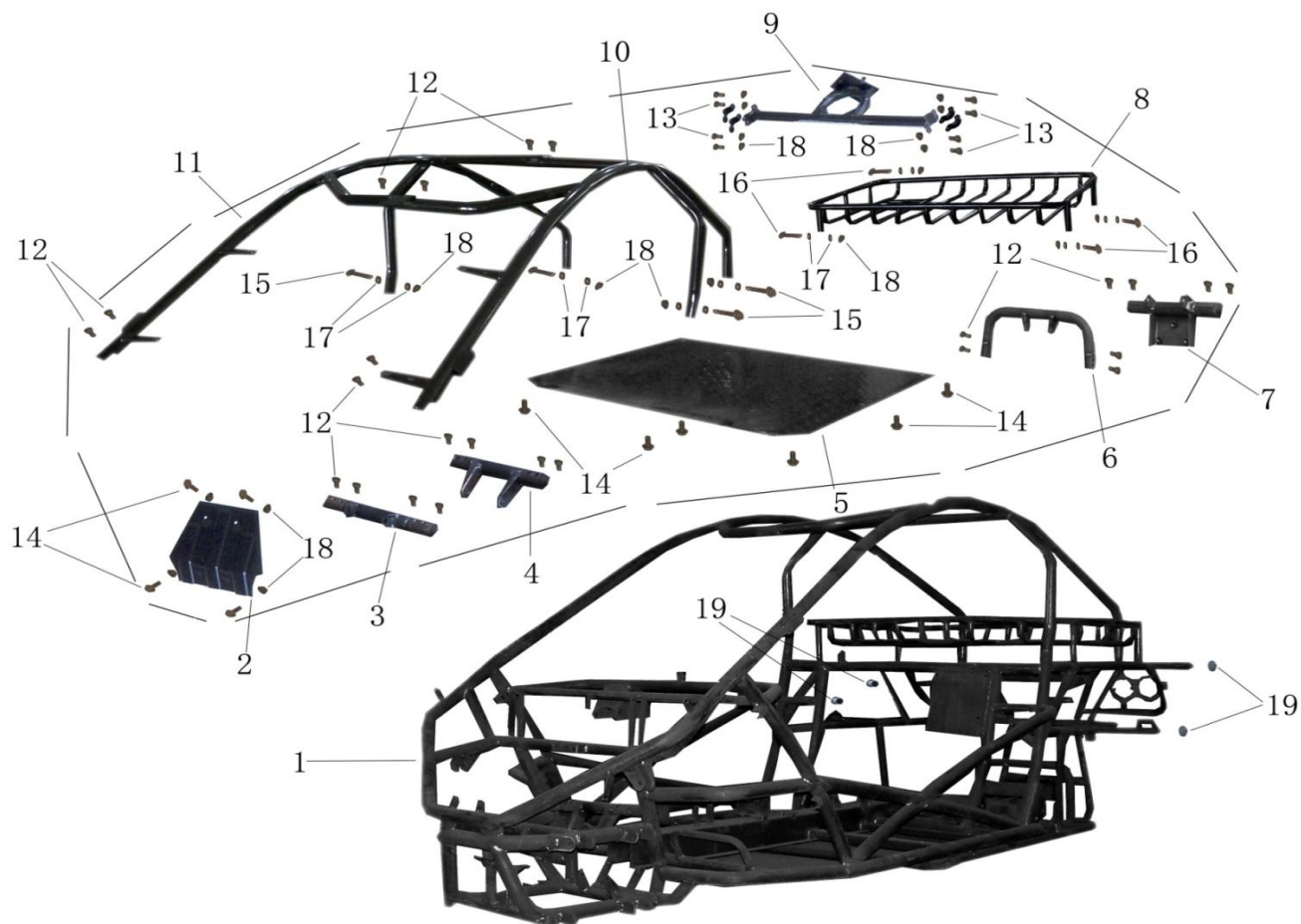
## 2.6 OPEN DIFFERENTIAL



KITS			
REFERENCE ITEMS INCLUDED	KIT PART NUMBER	DESCRIPTION	Qty.
2,3,4,5,6,8,9,11,14	5T07D1-1701600	CLOSED DIFFERENTIAL ASSY.	1
12,13	324-0024	OUTPUT SEAL KIT	1
2,9	324-0025	BEARING KIT	1
ITEMS SOLD SEPARATELY			
ITEM #	PART NUMBER	DESCRIPTION	Qty.
5	4T08A-1701601	OUTPUT SHAFT	1
7	QR512-1701611	RING GEAR	1
10	5T07-1701309	BOLT SET FOR RING GEAR	8
11	MQC4-2303016	RETAINING RING	2
14	QR512-1701605	RIGHT SEAL ADJUSTING WASHER OF DIFFERENTIAL	1
REFERENCE ONLY ITEMS			
REFERENCE ITEM	PART NUMBER	DESCRIPTION	Qty.
1	5T07D1-1701600	DRIVEN GEAR ASSY	1
2	5T07-1701310	FRONT BEARING OF DIFFERENTIAL	1
3	QR512-1701604	DRIVING GEAR OF ODOMETER	1
4	4T08A-1701602	FRONT BEARING OF OUTPUT SHAFT	1
5	4T08A-1701601	OUTPUT SHAFT	1
6	4T08A-1701603	CONNECTING DISC	1
7	QR512-1701611	DRIVEN GEAR OF SPEED REDUCER	1
8	4T08A-1701605	REAR BEARING OF OUTPUT SHAFT	1
9	5T07-1701320	REAR BEARING OF DIFFERENTIAL	1
10	5T07-1701309	FLANGE BOLT	8
11	MQC4-2303016	RETAINING RING	2
12	5T07-1701090	RIGHT SEAL OF DIFFERENTIAL	1
13	5T07-1701010	LEFT SEAL OF DIFFERENTIAL	1
14	QR512-1701605	RIGHT SEAL ADJUSTING WASHER OF DIFFERENTIAL	Demand

### 3. VEHICLE

#### 3.1 FRAME,ROLL CAGE

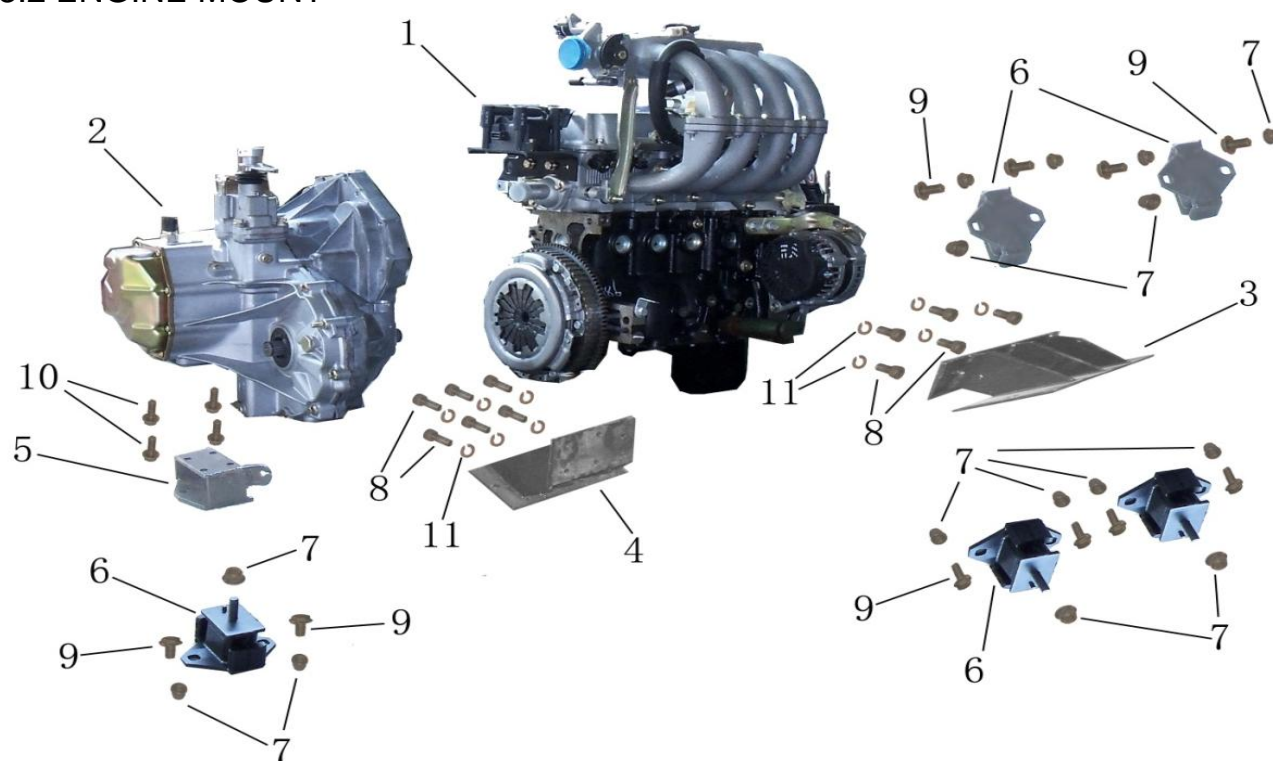


KITS			
REFERENCE ITEMS INCLUDED	KIT PART NUMBER	DESCRIPTION	QTY
2,14,18	200-B339	FRONT GUARD PLATE	1
3,4,12	200-B389	FRONT DIFFERENTIAL MOUNT	1
5,14	200-B429	ENGINE GUARD PLATE	1
6,7,12	200-B409	REAR DIFFERENTIAL MOUNT	1
8,16,17,18	200-B259	REAR STORAGE RACK	1
9,13,18	800-2500	SPARE TIRE MOUNT	1
10,11,12,15,17,18	200-B059	COMPLETE ROLL CAGE KIT	1
ITEMS SOLD SEPARATELY			
ITEMS	PART NUMBER	DESCRIPTION	QTY

### 3.1 FRAME,ROLL CAGE

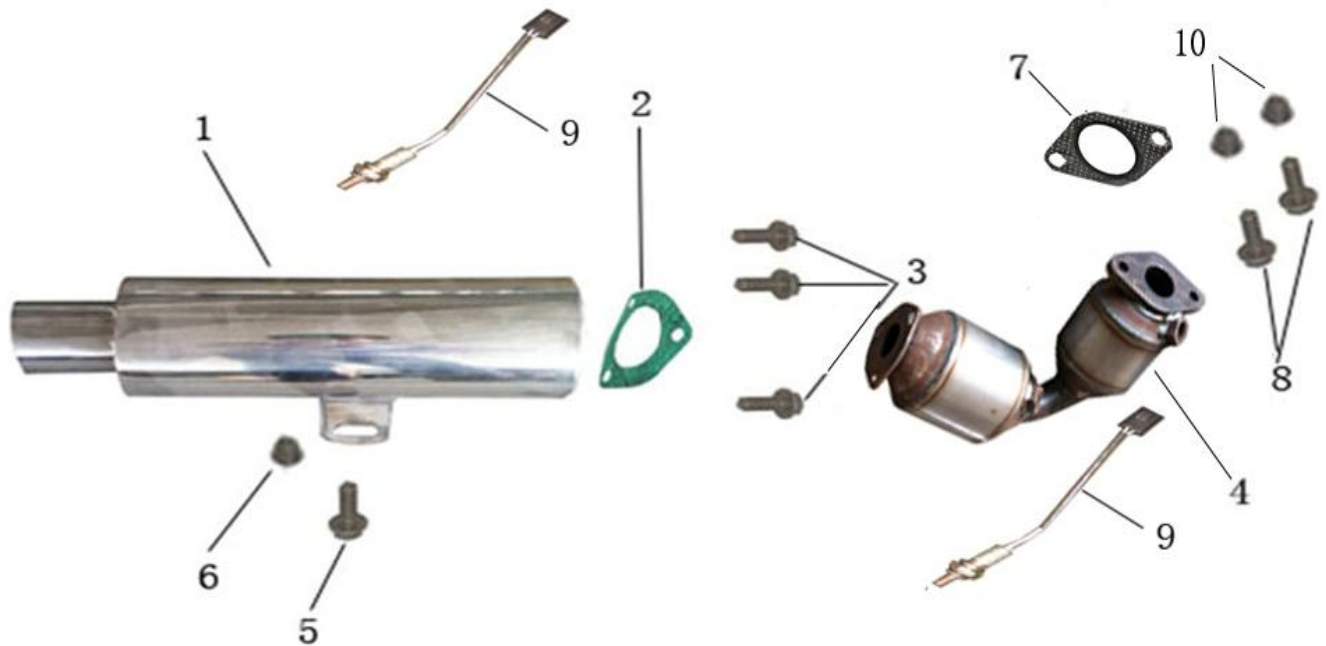
REFERENCE ONLY ITEMS			
REFERENCE ITEM	PART NUMBER	DESCRIPTION	QTY
1	KO101010000	FRAME	1
2	50170-BDH0-0000	FRONT GUARD PLATE	1
3	KN101360000	FRONT DIFFERENTIAL MOUNT 1	1
4	KN101370000	FRONT DIFFERENTIAL MOUNT 2	1
5	KN101400000	ENGNE GUARD PLATE	1
6	KN101380000	REAR DIFFERENTIAL MOUNT 1	1
7	KN101390000	REAR DIFFERENTIAL MOUNT 2	1
8	KN101190000	REAR STORAGE RACK	1
9	KN101280000	SPARE TIRE MOUNT	1
10	KN101050000	LEFT ROLL CAGE	1
11	KN101060000	RIGHT ROLL CAGE	1
12	GB/T70-86 M8x25	SOCKET HEAD BOLT M8x25	24
13	GB/T16674-1996 M8x25	BOLT W/FLANGE M8x25	8
14	GB/T16674-1996 M8x20	BOLT W/FLANGE M8x20	9
15	GB/T16674-1996 M8x60	BOLT W/FLANGE M8x60	4
16	GB/T16674-1996 M8x45	BOLT W/FLANGE M8x45	4
17	KN108530000	R WASHER 8mm	16
18	GB/T6187.1-2000 M8	NUTS W/FLANGE M8	20
19	KN103190000	REAR FENDER MOUNT RUBBER	4

### 3.2 ENGINE MOUNT



KITS			
REFERENCE ITEMS INCLUDED	KIT PART NUMBER	DESCRIPTION	QTY
3,8,11	260-B149	REAR ENGINE MOUNT	1
4,8,11	260-B139	FRONT ENGINE MOUNT	1
5,10	200-B159	LEFT ENGINE MOUNT	1
6,7,9	200-L019	ENGINE RUBBER MOUNTS (EACH)	1
ITEMS SOLD SEPARATELY			
ITEMS	PART NUMBER	DESCRIPTION	QTY
REFERENCE ONLY ITEMS			
REFERENCE ITEM	PART NUMBER	DESCRIPTION	QTY
1	472-0000E01AA	COMPLETE 1100CC ENGINE ASSY	1
2	KN102020000	TRANSMISSION ASSY	1
3	KO101130000	REAR ENGINE MOUNT	1
4	KO101120000	FRONT ENGINE MOUNT	1
5	KN101140000-1	LEFT ENGINE MOUNT	1
6	KN003090000	ENGINE RUBBER MOUNTS	5
7	GB/T6187.1-2000 M12	NUTS W/FLANGE M12	15
8	GB/T70-86 M10x1.5x25	SOCKET HEAD BOLT M10x1.5x25	11
9	GB/T16674-1996 M12x30	BOLT W/FLANGE M12x30	10
10	GB/T16674-1996 M10x20	BOLT W/FLANGE M10x20	4
11	GB/T93-87 10	SPRING WASHER $\varnothing$ 10	11

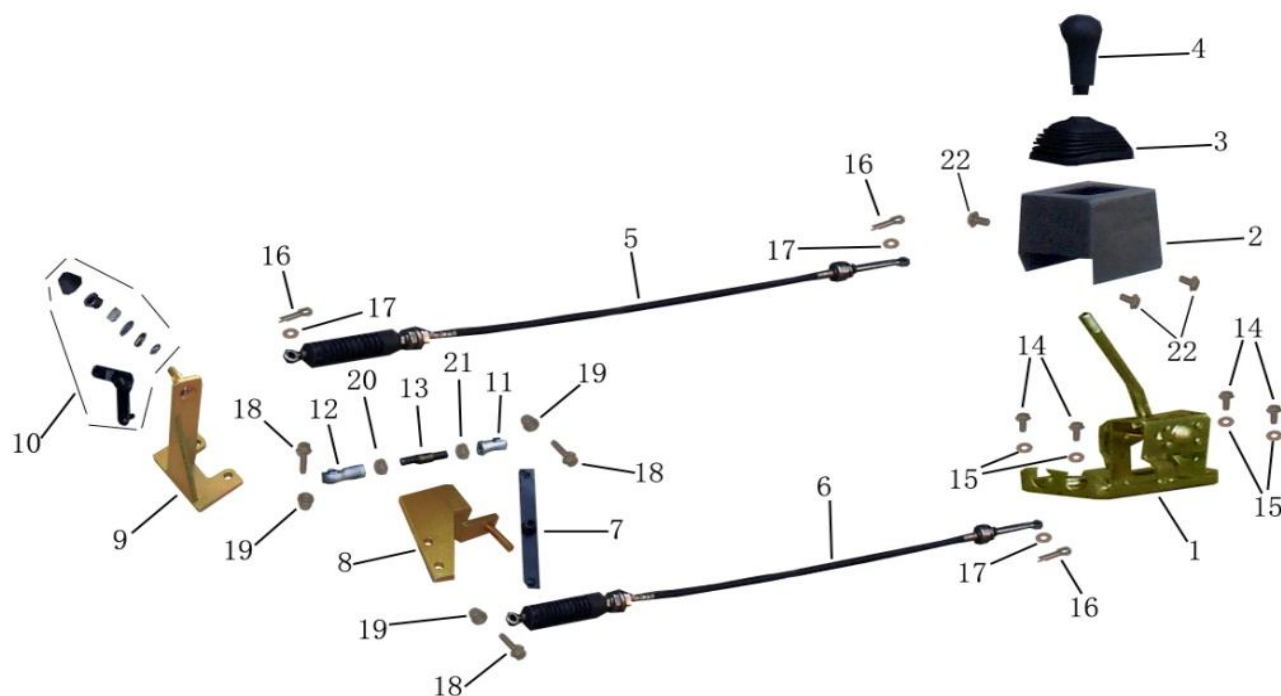
### 3.3 EXHAUST SYSTEM



KITS			
REFERENCE ITEMS INCLUDED	KIT PART NUMBER	DESCRIPTION	QTY
1,2,7,9	200-Q031	MUFFLER	1
2,3,4,9,10,11	260-Q039	1100 EXHAUST TAILPIPE	1
ITEMS SOLD SEPARATELY			
ITEMS	PART NUMBER	DESCRIPTION	QTY
2	KO102030200	MUFFLER GASKET	1
4	KO102030400	EXHAUST TAILPIPE GASKET	1
13	S11-1205110JA	OXYGEN SENSOR	1
REFERENCE ONLY ITEMS			
REFERENCE ITEM	PART NUMBER	DESCRIPTION	QTY
1	KO102030100-1	MUFFLER	1
2	KO102030200-1	MUFFLER GASKET	1
3	GB/T16674-1996 M8x25	FLANGE BOLT M8x25	3
4	KO102030300-2	EXHAUST TAILPIPE	1
5	GB/T16674-1996 M12x30	FLANGE BOLT M12x1.25x30	1
6	GB/T6187.1-2000 M12	FLANGE NUT M12	1
7	KO102030400	EXHAUST TAILPIPE GASKET	1
8	GB/T16674-1996 M10x30	BOLT W/FLANGE M10x30	2
9	S11-1205110JA	OXYGEN SENSOR	2
10	GB/T6187.1-2000 M10	NUTS W/FLANGE M10	2



### 3.4 GEAR SHIFT MECHANISM

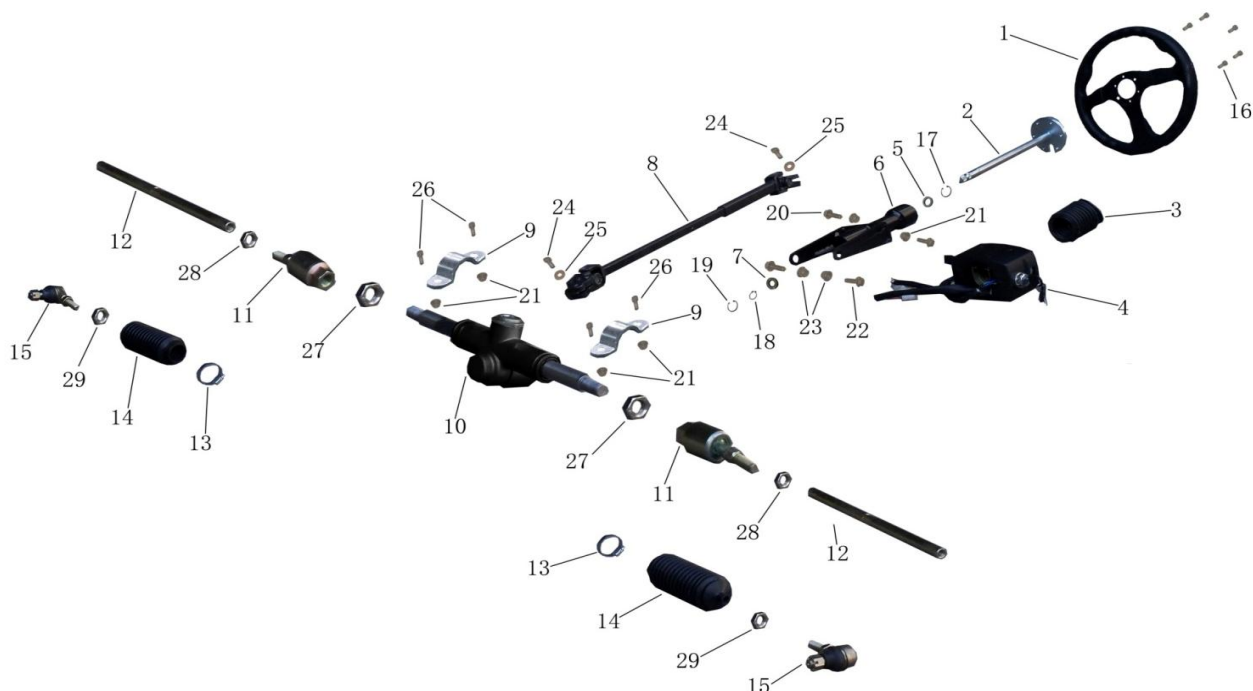


KITS			
REFERENCE ITEMS INCLUDED	KIT PART NUMBER	DESCRIPTION	QTY
1,2,3,4,14,15,22	200-G019	GEAR SHIFT ASSEMBLY	1
5,16,17	200-D109	SHIFTER CABLE 1	1
6,16,17,18,19	200-D119	SHIFTER CABLE 2	1
9,10,11,12,13,18,19,20,21	200-B199	SHIFTER ARM KIT	1
ITEMS SOLD SEPARATELY			
ITEMS	PART NUMBER	DESCRIPTION	QTY
2	KN003170000	GEAR SHIFT LEVER COVER	1
3	KN105150200	SHIFTER BOOT	1
4	KN105150300	SHIFTER KNOB	1
8	KN101090030	SHIFTER BRACKET	1

### 3.4 GEAR SHIFT MECHANISM

REFERENCE ONLY ITEMS			
REFERENCE ITEM	PART NUMBER	DESCRIPTION	QTY
1	KN105150100	GEAR SHIFT LEVER	1
2	KN003170000	GEAR SHIFT LEVER COVER	1
3	KN105150200	SHIFTER BOOT	1
4	KN105150300	SHIFTER KNOB	1
5	KN106030000-1	SHIFTER CABLE 1	1
6	KN106040000-1	SHIFTER CABLE 2	1
7	KN101100030	GEARSHIFT BRACKET	1
8	KN101090030	SHIFTER BRACKET	1
9	KN101120030	SUPPORT ASSY.SHIFT ARM	1
10	KN101170030	SHIFT ARM.COMPONENT	1
11	KN101180030	ROD END BEARING SIL8E	1
12	KN101240030	ROD END BEARING SI8E	1
13	KN101110030	ADJUSTABLE BOLT M8	1
14	GB/T16674-1996 M6x20	BOLT W/FLANGE M6x20	4
15	GB/T96-85 6	WASHER $\varnothing 6$	4
16	GB/T91-2000 1.6x16	COTTER PIN 1.6x16	3
17	GB/T96-85 8	WASHER $\varnothing 8$	3
18	GB/T16674-1996 M8x30	BOLT W/FLANGE M8x30	3
19	GB/T6187.1-2000 M8	NUTS W/FLANGE M8	3
20	GB/T41-2000 M8	NUT M8 (L)	1
21	GB/T41-2000 M8	NUT M8 (R)	1
22	GB/T16674-1996 M8x16	BOLT W/FLANGE M8x16	3

### 3.5 STEERING ASSEMBLY

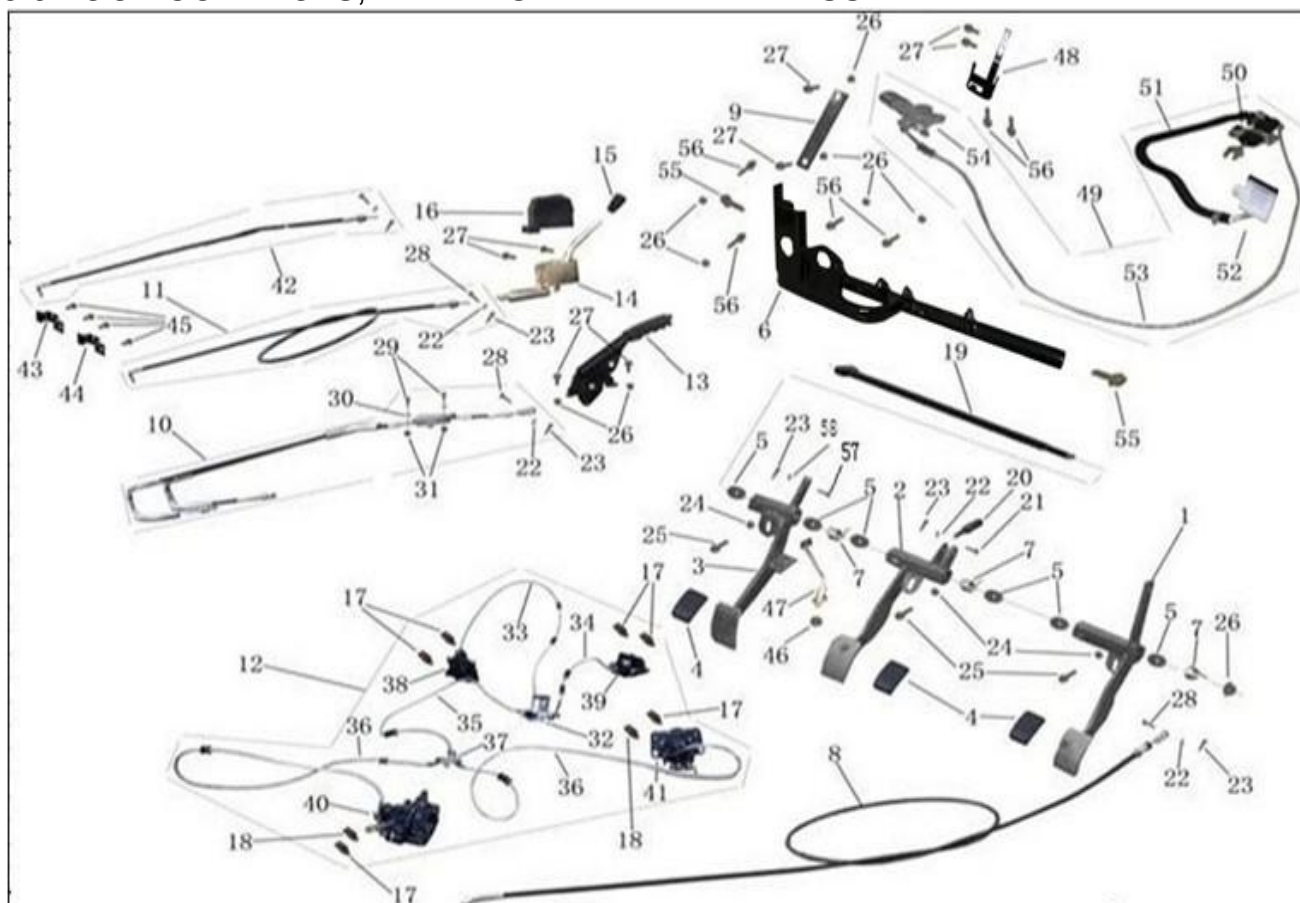


KITS			
REFERENCE ITEMS INCLUDED	KIT PART NUMBER	DESCRIPTION	QTY
1,2,3,16,18	200-D019	STEERING WHEEL KIT	1
4,5,6,7,17,19,20,21,22,23	200-E019	IGNITION SWITCH AND STEERING COLUMN KIT	1
8,24,25	200-D059	UNVERSAL STEERING ROD KIT	1
9,10,11,13,14,21,26,27,28	200-D069	STEERING RACK KIT	1
12,15,29	200-D099	TIE ROD END KIT	1
ITEMS SOLD SEPARATELY			
ITEMS	PART NUMBER	DESCRIPTION	QTY
1	KL003310000	STEERING WHEEL	1
4	KN004080000	IGNITION SWITCH	1
12	5324A-BDH0-0001	TIE ROD	1
14	53250-BCA0-0000	RUBBER STEERING BOOT	1
15	5324A-BDH0-0002	TIE ROD END	1

### 3.5 STEERING ASSEMBLY

REFERENCE ONLY ITEMS			
REFERENCE ITEM	PART NUMBER	DESCRIPTION	QTY
1	KL003310000	STEERING WHEEL	1
2	KN106090000	STEERING COLUMN ASSY	1
3	KN103180000	RUBBER STEERING COLUMN COVER	1
4	KN004080000	IGNITION SWITCH	1
5	KN006010000	61803 BEARING	1
6	KN101410000	INTEGRATED IGNITION SWITCH BRACKET	1
7	KN006020000	61902 BEARING	1
8	KN106100000-1	STEERING GEAR SHAFT	1
9	KN101350000	STEERING BOX PLATE	2
10	53210-BDH0-0000	STEERING BOX	1
11	53220-BCA0-0000	CARDAN JOINT	2
12	5324A-BDH0-0001	TIE ROD	2
13	53210-BDH0-0001	CLAMP	2
14	53250-BCA0-0000	RUBBER STEERING BOX BOOT	2
15	5324A-BDH0-0002	ROD END	2
16	GB/T70-86 M6×12	SOCKET HEAD BOLT M6×12	6
17	GB/T893.1-86 26	SNAP RINGS $\varnothing$ 26	1
18	GB/T894.1-86 15	SNAP RINGS $\varnothing$ 15	1
19	GB/T893.1-86 28	SNAP RINGS $\varnothing$ 28	1
20	GB/T16674-1996 M8×16	BOLT W/FLANGE M8×16	2
21	GB/T6187.1-2000 M8	NUTS W/FLANGE M8	6
22	GB/T16674-1996 M10×20	BOLT W/FLANGE M10×20	2
23	GB/T6187.1-2000 M10	NUTS W/FLANGE M10	2
24	GB/T70-86 M8×25	SOCKET HEAD BOLT M8×25	2
25	GB/T93-87 8	SPRING WASHER $\varnothing$ 8	2
26	GB/T70-86 M8×30	SOCKET HEAD BOLT M8×30	4
27	GB/T41-2000 M16	NUT M16	2
28	GB/T41-2000 M12	NUT M12 (R)	2
29	GB/T41-2000 M12	NUT M12 (L)	2

### 3.6 FOOT CONTROLS, PARKING BRAKE BRAKE ASSEMBLY



KITS			
REFERENCE ITEMS INCLUDED	KIT PART NUMBER	DESCRIPTION	QTY
1,4,5,7,24,25	200-B030	THROTTLE PEDAL KIT	1
2,4,5,7,20,21,22,23,24,25	200-B040	BRAKE PEDAL KIT	1
3,4,5,7,23,24,25,57,58	200-B050	CLUTCH PEDAL KIT	1
5,7,19,26	200-K070	PEDAL HARDWARE ONLY KIT	1
13,26,27	200-G029	PARKING BRAKE HANDLE ASSEMBLY	1
14,15,16,27	200-B319	DIFFERENTIAL LOCK HANDLE KIT	1
17,18	200-G031	BRAKE PAD KIT(1 PAIR)	1
50,51,52,53,54	200-G050	HYDRAULIC CLUTCH ASSEMBLY	1
24,48,54,60,61,62,63,64	200-G051	REAR SLAVE CYLINDER ASSEMBLY KIT	1
32,33,34,35,36,37,38,39,40,41	200-G040	FOUR CALIPER HYDRAULIC BRAKE ASSEMBLY	1

### 3.6 FOOT CONTROLS, PARKING BRAKE BRAKE ASSEMBLY

ITEMS SOLD SEPARATELY			
ITEMS	PART NUMBER	DESCRIPTION	QTY
4	KN103230000	PEDAL COVER RUBBER	1
8	KN106060000-1	THROTTLE CABLE	1
9	KN101240000	PEDAL ASSEMBLY SUPPORT	1
10	KN106050000	PARKING BRAKE CABLE	1
11	KN106080000-1	REAR DIFFERENTIAL LOCKER CABLE	1
16	KN103240000	DIFFERENTIAL LOCKER HANDLE BOOT	1
19	KN108510000	PEDAL BOLT M8x370	1
32	KN105160100	MASTER CYLINDER ASSEMBLY	1
38	KN105160700	FRONT LEFT SIDE FLOATING CALIPER	1
39	KN105160800	FRONT RIGHT SIDE FLOATING CALIPER	1
40	KN105160900	REAR LEFT SIDE FLOATING CALIPER	1
41	KN105161000	REAR RIGHT BRAKE CALIPER	1
42	KN105161000	FRONT DIFFERENTIAL LOCKER CABLE	1
47	KN004021000	NEUTRAL SAFETY SWITCH	1
48	KN101250000	REAR CLUTCH CYLINDER BRACKET	1
50	KN105200100	MASTER CLUTCH CYLINDER ASSEMBLY	1
52	KN105200600	CLUTCH RESERVOIR	1
54	KN105200500	REAR CLUTCH CYLINDER ASSEMBLY	1

### 3.6 FOOT CONTROLS, PARKING BRAKE BRAKE ASSEMBLY

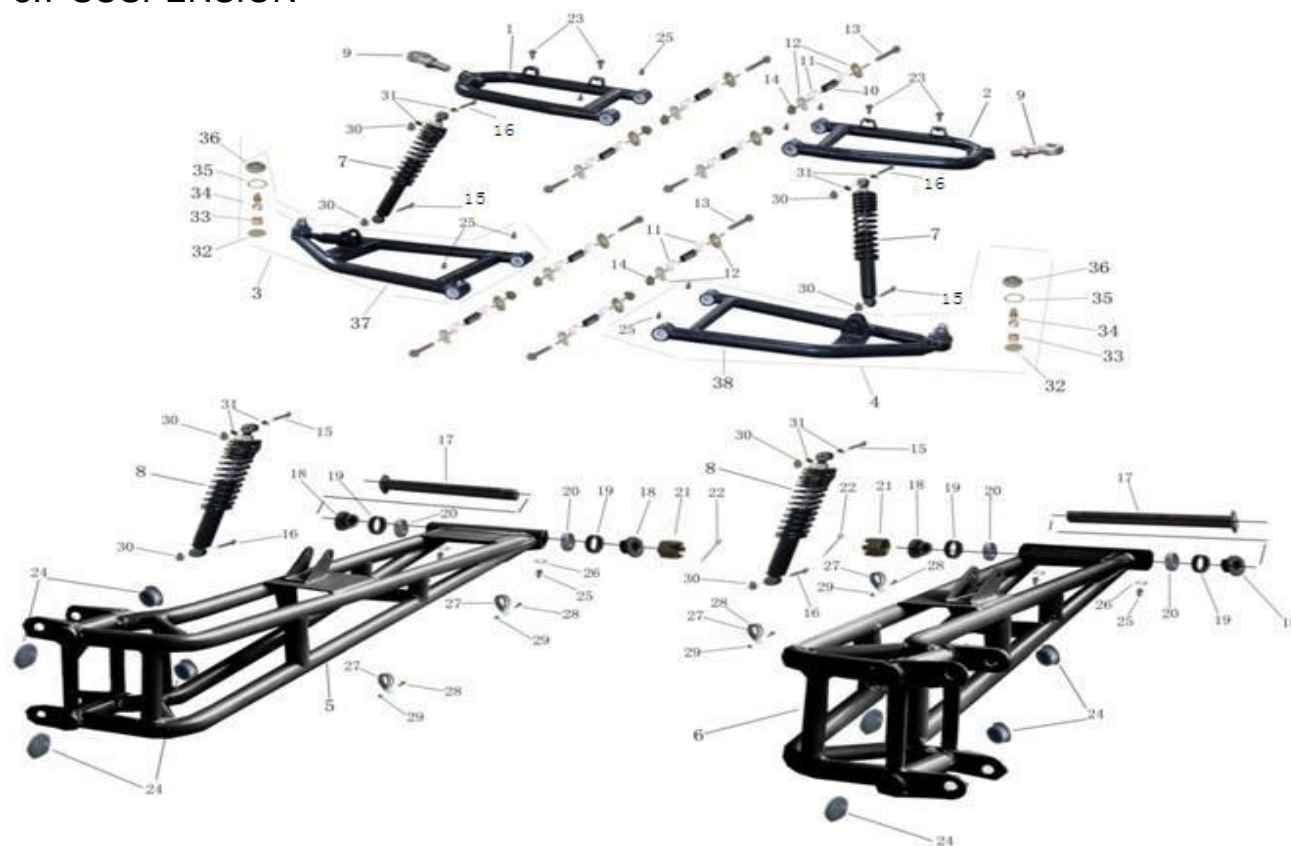
REFERENCE ONLY ITEMS			
REFERENCE ITEM	PART NUMBER	DESCRIPTION	QTY
1	KN101020000-1	THROTTLE PEDAL	1
2	KN101030000-1	BRAKE PEDAL	1
3	KN101040000-1	CLUTCH PEDAL	1
4	KN103230000	PEDAL COVER RUBBER	3
5	53331-BCA0-0000	NYLON BUSH	6
6	KN101230000-1	PEDAL BRACKET	1
7	53392-BCA0-0000	TORSION SPRING	3
8	KN106060000-1	THROTTLE CABLE	1
9	KN101240000	SUPPORT	1
10	KN106050000	PARKING BRAKE CABLE	1
11	KN106080000-1	REAR DIFFERENTIAL LOCKER CABLE	1
12	KN105160000-1	FOUR CALIPER HYDRAULIC BRAKE ASSY	1
13	53180-BDA0-0010	PARKING BRAKE HANDLE ASSEMBLY	1
14	KN101300030	DIFFERENTIAL LOCKER HANDLE	2
15	KN103170000	DIFFERENTIAL LOCKER HANDLE KNOB	2
16	KN103240000	DIFFERENTIAL LOCKER HANDLE BOOT	2
17	KN105161100	BRAKE PAD (THICK)	6
18	KN105161200	BRAKE PAD (THIN)	2
19	KN108510000	PEDAL BOLT M8x370	1
20	KN108540000	MASTER CYLINDER ROD	1
21	GB/T882-86 6x30	ROLL PIN 6x30	2
22	GB/T96-85 6	WASHER $\varnothing$ 6	6
23	GB/T91-2000 1.6x16	COTTER PIN 1.6x16	6
24	GB/T41-2000 M8	NUT M8	4
25	GB/T16674-1996 M8x55	FLANGE BOLT M8x55	3
26	GB/T6187.1-2000 M8	FLANGE NUT M8	9
27	GB/T16674-1996 M8x20	FLANGE BOLT M8x20	8
28	GB/T882-86 6x20	ROLL PIN 6x20	4
29	GB/T70-86 M5x16	SOCKET HEAD BOLT M5x16	2
30	GB/T96-85 5	WASHER $\varnothing$ 5	2
31	GB/T6187.1-2000 M5	FLANGE NUT M5	1
32	KN105160100	MASTER CYLINDER ASSEMBLY	1
33	KN105160200-1	FRONT LEFT BRAKE TUBE	1
34	KN105160300-1	FRONT RIGHT BRAKE TUBE	1
35	KN105160400-1	CENTER BRAKE TUBE	1
36	KN105160500	REAR BRAKE TUBE	2
37	KN105160600	BRAKE DISTRIBUTION BLOCK	1
38	KN105160700	FRONT LEFT SIDE FLOATING CALIPER	1
39	KN105160800	FRONT RIGHT SIDE FLOATING CALIPER	1
40	KN105160900	REAR LEFT SIDE FLOATING CALIPER	1
41	KN105161000	REAR RIGHT SIDE FLOATING CALIPER	1
42	KN106110000	FRONT DIFFERENTIAL LOCKER CABLE	1

### 3.6 FOOT CONTROLS, PARKING BRAKE BRAKE ASSEMBLY

REFERENCE ONLY ITEMS			
REFERENCE ITEM	PART NUMBER	DESCRIPTION	QTY
43	KN101430000	FRONT DIFFERENTIAL LOCKER BRACKET	1
44	KN101110000	REAR DIFFERENTIAL LOCKER BRACKET	1
45	GB/T16674-1996 M6x16	FLANGE BOLT M6x16	4
46	GB/T41-2000 M10	NUT M10	1
47	KN004021000	NEUTRAL SAFETY SWITCH	1
48	KN101251000	SPRING	1
49	KN105200000	HYDRAULIC CLUTCH ASSEMBLY	1
50	KN105200100	MASTER CLUTCH CYLINDER ASSEMBLY	1
51	KN105200200	FRONT CLUTCH LINE	1
52	KN105200300	CLUTCH RESERVOIR	1
53	KN105200400	REAR CLUTCH LINE	1
54	KN105200500-1	REAR CLUTCH CYLINDER ASSEMBLY	1
55	GB/T16674-1996 M12x30	FLANGE BOLT M12x30	2
56	GB/T16674-1996 M8x30	FLANGE BOLT M8x30	4
57	GB/T882-86 8X25	ROLL PIN 8X25	1
58	GB/T96-85 8	WASHER $\varnothing 8$	1
59	KN101300090	DIFFERENTIAL LOCKER SWITCH	2
60	GB/T41-2000 M6	NUT M6	1
61	KN105200810	STEEL BUSH 1	1
62	KN105200820	STEEL BUSH 2	1
63	KN105200830	NUT M8	1
64	GB/T16674-1996 M8x60	FLANGE BOLT M8x60	1
65	KN105200840	CLUTCH CYLINDER BRACKET	1



### 3.7 SUSPENSION

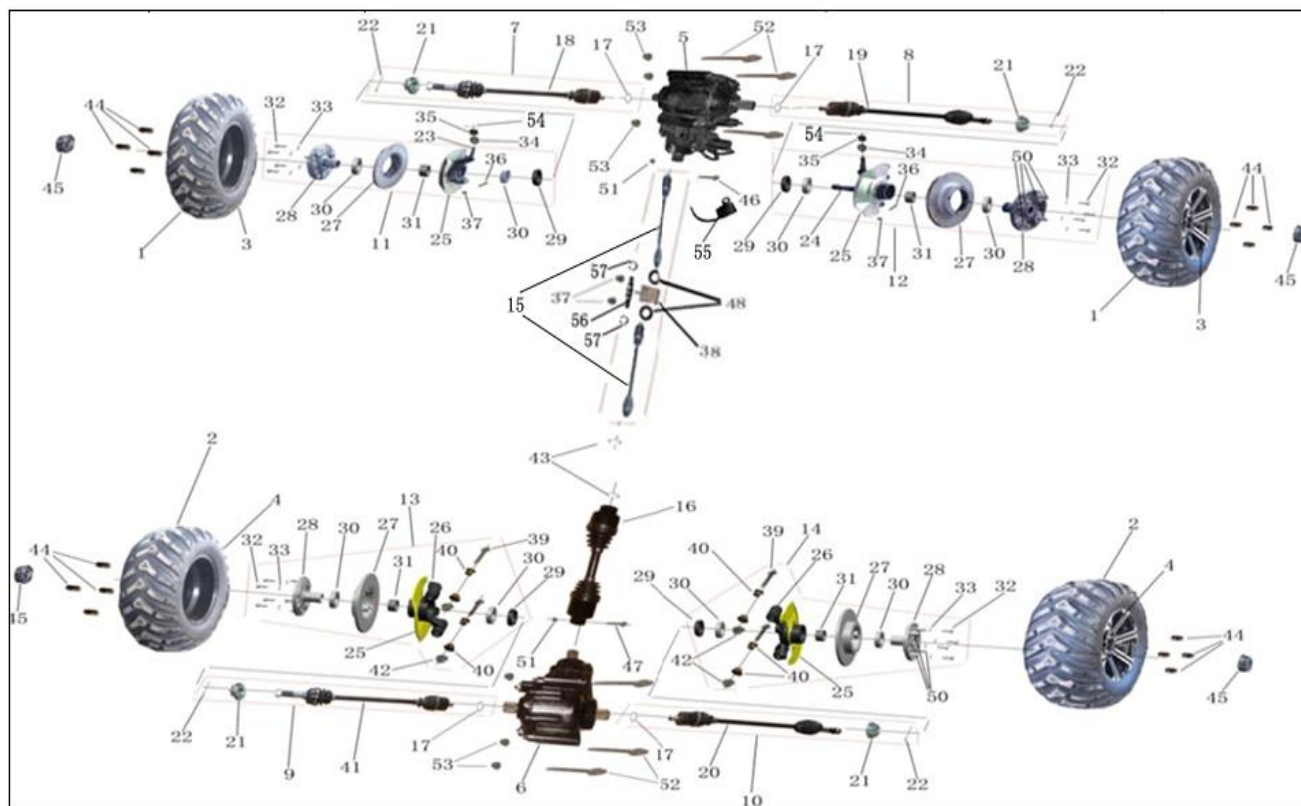


KITS			
REFERENCE ITEMS INCLUDED	KIT PART NUMBER	DESCRIPTION	QTY
1,9,,10,11,12,23,25	200-B080	FRONT LEFT UPPER SUSPENSION ARM	1
2,9,10,11,12,23,25	200-B090	FRONT RIGHT UPPER SUSPENSION ARM	1
10,11,12,13, 14	200-B071	FRONT SUSPENSION BUSHING KIT (PAIR)	1
15,30	S01-1086	FRONT SHOCK BOLT KIT (EACH)	1
15, 16,30	S01-1085	REAR SHOCK BOLT KIT (EACH)	1
17,18,19,20,21,22	200-B112	REAR SUSPENSION BUSHING KIT (EACH)	1
ITEMS SOLD SEPARATELY			
ITEMS	PART NUMBER	DESCRIPTION	QTY
3	5120A-BDH0-0001	FRONT LEFT LOWER SUSPENSION ARM	1
4	5140A-BDH0-0001	FRONT RIGHT LOWER SUSPENSION ARM	1
5	KN101070000-1	LEFT REAR SWING ARM	1
6	KN101080000-1	RIGHT REAR SWING ARM	1
7	51400-BDH0-0002	FRONT SHOCK ABSORBER	1
8	52400-BDH0-0002	REAR SHOCK ABSORBER	1
9	5110A-BDH0-0001	ROD END BEARING M18	1
17	KN108570000-1	REAR SWING ARM BOLT	1
19	91201-BDA0-0000	OIL SEAL 25x40-7	1
20	96100-30203	BEARING 30203	1
24	KN103200000	REAR SWING ARM RUBBER PLUG	1
25	KN004090000	GREASE FITTING (EACH)	1

### 3.7 SUSPENSION

REFERENCE ONLY ITEMS			
REFERENCE ITEM	PART NUMBER	DESCRIPTION	QTY
1	5110A-BDH0-0001	FRONT LEFT UPPER SUSPENSION ARM	1
2	5130A-BDH0-0001	FRONT RIGHT UPPER SUSPENSION ARM	1
3	5120A-BDH0-0001	FRONT LEFT LOWER SUSPENSION ARM	1
4	5140A-BDH0-0001	FRONT RIGHT LOWER SUSPENSION ARM	1
5	KN101070000-1	LEFT REAR SWING ARM	1
6	KN101080000-1	RIGHT REAR SWING ARM	1
7	51400-BDH0-0002	FRONT SHOCK ABSORBER	2
8	52400-BDH0-0002	REAR SHOCK ABSORBER	2
9	5110A-BDH0-0101	ROD END BEARING M18	2
10	5110A-BDH0-0002	FRONT SUSPENSION ARM STEEL BUSH	8
11	5110A-BDH0-0003	FRONT SUSPENSION ARM NYLON BUSH	16
12	5110A-BDH0-0004	SUSPENSION ARM WASHER	16
13	GB/T16674-1996 M10x65	FLANGE BOLT M10x65	8
14	GB/T6187.1-2000 M10	FLANGE NUT M10	8
15	GB/T16674-1996 M12x70	FLANGE BOLT M12x70	4
16	GB/T16674-1996 M12x60	FLANGE BOLT M12x60	4
17	KN108570000-1	REAR SWING ARM BOLT	2
18	KN108600000	REAR SWING ARM BUSH	4
19	91201-BDA0-0000	OIL SEAL 25x40-7	4
20	96100-30203	BEARING 30203	4
21	GB/T6178-86 M16	SLOTTED NUT M16	2
22	GB/T91-2000 3.2x32	COTTER PIN 3.2x32	2
23	GB/T16674-1996 M6x12	FLANGE BOLT M6x12	4
24	KN103200000	REAR SWING ARM RUBBER PLUG	8
25	KN004090000	GREASE FITTING	12
26	KN004100000	WASHER	4
27	KN001860000	CLAMP 13	4
28	GB/T16674-1996 M6x20	FLANGE BOLT M6x20	4
29	GB/T6187.1-2000 M6	FLANGE NUT M6	4
30	GB/T6187.1-2000 M12	FLANGE NUT M12	8
31	KN108660000	ABSORBER BUSH	8
32	5140A-BDH0-0101	GASKET	2
33	5140A-BDH0-0201	NYLON BUSHING	2
34	5140A-BDH0-0301	BULB	2
35	5140A-BDH0-0401	CIRCLIP	2
36	5140A-BDH0-0501	RUBBER COVER	2
37	5120A-BDH0-0601	FRONT LEFT LOWER SUSPENSION ARM	1
38	5140A-BDH0-0601	FRONT RIGHT LOWER SUSPENSION ARM	1

### 3.8 DRIVELINE



#### KITS

REFERENCE ITEMS INCLUDED	KIT PART NUMBER	DESCRIPTION	QTY
1,3	200-F019	FRONT WHEEL ASSEMBLY	1
2,4	200-F029	REAR WHEEL ASSEMBLY	1
15, 37,38,43, 46, 48, 49, 51	200-F129	FRONT DRIVE SHAFT ASSEMBLY	1
16,43,47,51	200-F139	REAR DRIVE SHAFT ASSEMBLY	1
17,18,21,22	200-F089	FRONT LEFT CV AXLE SHAFT ASSEMBLY	1
17,19,21,22	200-F099	FRONT RIGHT CV AXLE SHAFT ASSEMBLY	1
17,20,21,22	200-F119	REAR RIGHT CV AXLE SHAFT ASSEMBLY	1
17,21,22,41	200-F109	REAR LEFT CV AXLE SHAFT ASSEMBLY	1
21,22	S07-1017	CASTLE NUT/COTTER PIN	1
22,23,25,27,28,29,30, 31,32,33,34,35,36,37,	200-F169	FRONT LEFT HUB HOUSING ASSEMBLY	1
22,24,25,27,28,29,30, 31,32, 33,34,35,36,	200-F179	FRONT RIGHT HUB HOUSING ASSEMBLY	1
22,34,35,36,37	N01-1100	FRONT HUB HOUSING BUSHING KIT	1
25,26,27,28,29,30,31, 32,33, 39,40,42,50	200-F189	REAR HUB HOUSING ASSEMBLY	1
27,28,29,30,31,32,33,5	200-F190	COMPLETE FRONT/REAR HUB ASSEMBLY	1
44,50	N01-0141	WHEEL STUD KIT (FOR ONE WHEEL)	1
32,33	S01-1061	BRAKE ROTOR BOLT KIT (FOR ONE WHEEL)	1
39,40,42	N01-1120	REAR HUB HOUSING BUSHING KIT	1
52,53	S01-1087	DIFFERENTIAL MOUNTING HARDWARE	1

### 3.8 DRIVELINE

ITEMS SOLD SEPARATELY			
ITEMS	PART NUMBER	DESCRIPTION	QTY
1	KN105130000	FRONT TIRE 27x8-14	1
2	KN105140000	REAR TIRE 27x11-14	1
3	KN105110000	FRONT WHEEL 14x6	1
4	KN105120000	REAR WHEEL 14x8	1
5	KN105070000	FRONT DIFFERENTIAL	1
6	KN105080000	REAR DIFFERENTIAL	1
17	KN105010200	AXLE SHAFT SNAP RING	1
23	KN105170100	FRONT LEFT HUB HOUSING	1
24	KN105180100	FRONT RIGHT HUB HOUSING	1
25	KN105180200	DUST SHIELD	1
26	KN105100100	REAR HUB HOUSING	1
27	KN105090200	BRAKE DISC	1
28	KN105090300	WHEEL HUB	1
29	KN105090400	OIL SEAL44x62-15	1
30	KN105090500	BEARING 6007	1
31	KN105090600	WHEEL HUB BUSHING	1
44	KN108520000	WHEEL LUG NUT M12x1.25 (Pkg of 4)	1
45	42706-BDH0-0000	WHEEL HUB CAP	1

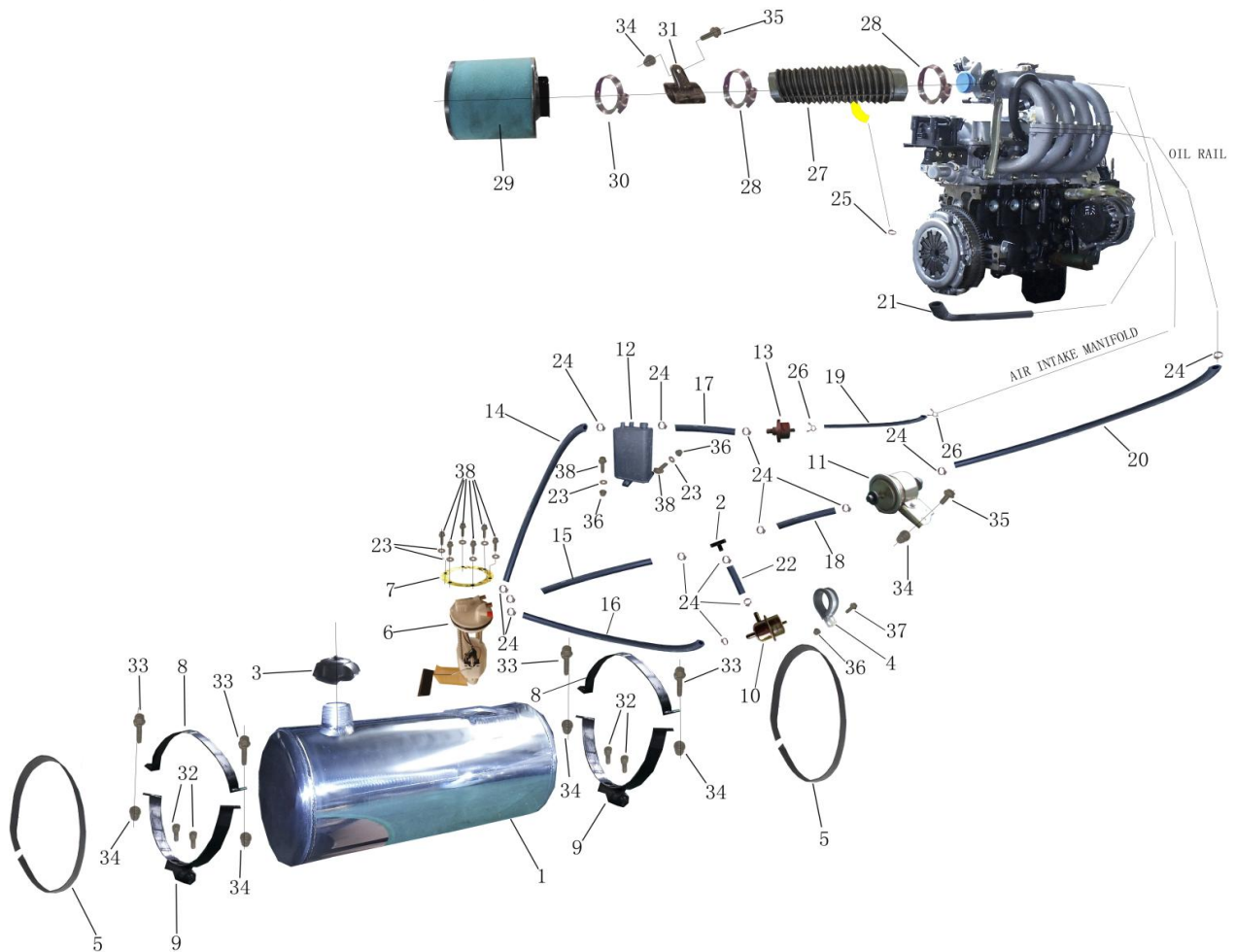
### 3.8 DRIVELINE

REFERENCE ONLY ITEMS			
REFERENCE ITEM	PART NUMBER	DESCRIPTION	QTY
1	KN105130000	FRONT TIRE 27x8-14	2
2	KN105140000	REAR TIRE 27x11-14	2
3	KN105110000	FRONT WHEEL 14x6	2
4	KN105120000	REAR WHEEL 14x8	2
5	KN105070000	FRONT DIFFERENTIAL	1
6	KN105080000	REAR DIFFERENTIAL	1
7	KN105010000	FRONT LEFT CV AXLE SHAFT ASSEMBLY	1
8	KN105020000	FRONT RIGHT CV AXLE SHAFT ASSEMBLY	1
9	KN105030000	REAR LEFT CV AXLE SHAFT ASSEMBLY	1
10	KN105040000	REAR RIGHT CV AXLE SHAFT ASSEMBLY	1
11	KN105170000	FRONT LEFT HUB ASSEMBLY	1
12	KN105180000	FRONT RIGHT HUB ASSEMBLY	1
13	KN105090000	REAR LEFT HUB ASSEMBLY	1
14	KN105100000	REAR RIGHT HUB ASSEMBLY	1
15	KN105050000-2	FRONT DRIVE SHAFT ASSEMBLY	1
16	KN105060000	REAR DRIVE SHAFT ASSEMBLY	1
17	KN105010200	AXLE SHAFT SNAP RING	4
18	KN105010100	FRONT LEFT CV AXLE SHAFT	1
19	KN105020100	FRONT RIGHT CV AXLE SHAFT	1
20	KN105040100	REAR RIGHT CV AXLE SHAFT	1
21	GB/T6178-86 M18	SLOTTED NUT M18	4
22	GB/T91-2000 3.2x32	COTTER PIN 3.2x32	6
23	KN105170100	FRONT LEFT HUB HOUSING	1
24	KN105180100	FRONT RIGHT HUB HOUSING	1
25	KN105180200	DUST SHIELD	4
26	KN105100100	REAR HUB HOUSING	2
27	KN105090200	BRAKE DISC	4
28	KN105090300	WHEEL HUB	4
29	KN105090400	OIL SEAL 44x62-15	4
30	KN105090500	BEARING 6007	8
31	KN105090600	WHEEL HUB BUSH	4
32	GB/T5782-2000 M10x25	BOLT M10x25	16
33	GB/T93-87 10	SPRING WASHER $\varnothing$ 10	16
34	GB/T6178-86 M16	SLOTTED NUT M16	2
35	KN108610000	FRONT HUB HOUSING BUSH $\varnothing$ 23X $\varnothing$ 17X10	2
36	GB/T16674-1996 M10x50	FLANGE BOLT M10x50	2
37	GB/T6187.1-2000 M10	FLANGE NUT M10	4
38	KN101341000	FRONT DRIVE SHAFT MOUNT	1
39	GB/T16674-1996 M14x115	FLANGE BOLT M14x115	4
40	KN108630000	REAR HUB HOUSING BUSH	8
41	KN105030100	REAR LEFT CV AXLE SHAFT	1
42	GB/T6187.1-2000 M14	FLANGE NUT M14	4
43	KN105060100	OUTPUT SHAFT SNAP RING	2
44	KN108520000	WHEEL LUG NUT M12x1.25	16

### 3.8 DRIVELINE

REFERENCE ONLY ITEMS			
REFERENCE ITEM	PART NUMBER	DESCRIPTION	QTY
45	42706-BDH0-0000	WHEEL HUB CAP	4
46	GB/T16674-1996 M8x50	FLANGE BOLT M8x50	1
47	GB/T70-86 M8x55	SOCKET HEAD BOLT M8x55	1
48	6006-2RSE1	BEARING 6006	2
49	KN101260000	DRIVE SHAFT BUSH	2
50	KN105180300	WHEEL BOLT M12x30	16
51	GB/T6187.1-2000 M8	FLANGE NUT M8	2
52	GB/T16674-1996 M12x115	FLANGE BOLT M12x115	6
53	GB/T6187.1-2000 M12	FLANGE NUT M12	6
54	GB/T91-2000 2.5x30	COTTER PIN 2.5x30	2
55	KN107070000	2-4WD CONVERSION MOTOR	1
56	KN101349000	DRIVE SHAFT	1
57	GB/T893.1-86 28	SNAP RINGS $\varnothing$ 28	2

### 3.9 FUEL SYSTEM, FUEL TANK, AIR INTAKE



KITS			
REFERENCE ITEMS INCLUDED	KIT PART NUMBER	DESCRIPTION	QTY
1,3	200-H019	FUEL TANK ASSEMBLY	1
6,7,23,38	200-E219	FUEL PUMP ASSEMBLY	1
5,8,9,33,34	200-B299	FUEL TANK MOUNTING KIT	1
4,10,36,37	200-H129	FUEL PRESS ADJUSTER	1
11,34,35	200-H089	FUEL FILTER	1
12,23,36,38	200-T019	CARBON CANISTER	1
27,28,29,30,31,34,35	200-Q059	AIR FILTER ASSEMBLY	1

### 3.9 FUEL SYSTEM, FUEL TANK, AIR INTAKE

ITEMS SOLD SEPARATELY			
ITEMS	PART NUMBER	DESCRIPTION	QTY
3	KN002010100	FUEL TANK CAP	1
13	S11-1208210JA	PRESSURE CONTROL VALVE (PCV)	1
14	KN103250000	VACUUM HOSE 1 $\Phi 8 \times \Phi 16$	1
15	KN103020000	FUEL HOSE 1 $\Phi 8 \times \Phi 16$	1
16	KN103030000	FUEL HOSE 2 $\Phi 8 \times \Phi 16$	1
17	KN103260000	VACUUM HOSE 2 $\Phi 8 \times \Phi 16$	1
18	KN103040000	FUEL HOSE 3 $\Phi 8 \times \Phi 16$	1
19	KN103270000	VACUUM HOSE 3 $\Phi 5 \times \Phi 9$	1
20	KN103050000	FUEL HOSE 4 $\Phi 8 \times \Phi 16$	1
21	KN103280000	VACUUM HOSE 4 $\Phi 16 \times \Phi 24$	1
22	KN103300000	FUEL HOSE 5 $\Phi 8 \times \Phi 16$	1
23	GB/T96-85 6	WASHER $\varnothing 6$	1
24	KN001820000	HOSE CLAMP (13-15)	1
25	KN001830000	HOSE CLAMP (20-32)	1
26	KN001840000	HOSE CLAMP $\Phi 9$	1
27	KN002120000	AIR FILTER RUBBER SLEEVE	1
28	KN002050100	AIR FILTER CLAMP	1
29	KN002050000	AIR FILTER	1
39	KN001850000	HOSE CLAMP $\Phi 7$	1
40	KN103290000	VACUUM HOSE5 $\Phi 4 \times \Phi 7$	1
41	KN103280000	VACUUM HOSE6 $\Phi 5 \times \Phi 9$	1
42	KN101440000	T-HOSE CONNECTOR 2	1



### 3.9 FUEL SYSTEM, FUEL TANK, AIR INTAKE

REFERENCE ONLY ITEMS			
REFERENCE ITEM	PART NUMBER	DESCRIPTION	QTY
1	KN002010000	FUEL TANK	1
2	KN101220000	T-HOSE CONNECTOR 1	1
3	KN002010100	FUEL TANK CAP	1
4	KN001850000	FUEL PRESS ADJUSTER CLAMP	1
5	KN103160000	FUEL TANK RUBBER	2
6	KN004060000	FUEL PUMP	1
7	KN101200030	FUEL PUMP PLATE	1
8	KN101290030	UPPER FUEL TANK BRACKET	2
9	KN101150030	LOWER FUEL TANK BRACKET	2
10	KN004070000	FUEL PRESS ADJUSTER	1
11	KL002080000	FILTER	1
12	KN002090000	CARBON CANISTER	1
13	S11-1208210JA	PRESSURE CONTROL VALVE (PCV)	1
14	KN103250000	VACUUM HOSE 1 $\Phi 8 \times \Phi 16$	1
15	KN103020000	FUEL HOSE 1 $\Phi 8 \times \Phi 16$	1
16	KN103030000	FUEL HOSE 2 $\Phi 8 \times \Phi 16$	1
17	KN103260000	VACUUM HOSE 2 $\Phi 8 \times \Phi 16$	1
18	KN103040000	FUEL HOSE 3 $\Phi 8 \times \Phi 16$	1
19	KN103270000	VACUUM HOSE 3 $\Phi 5 \times \Phi 9$	1
20	KN103050000	FUEL HOSE 4 $\Phi 8 \times \Phi 16$	1
21	KN103280000	VACUUM HOSE 4 $\Phi 16 \times \Phi 24$	1
22	KN103300000	FUEL HOSE 5 $\Phi 8 \times \Phi 16$	1
23	GB/T96-85 6	WASHER $\varnothing 6$	8
24	KN001820000	HOSE CLAMP (13-15)	14
25	KN001830000	HOSE CLAMP (20-32)	1
26	KN001840000	HOSE CLAMP $\Phi 9$	4
27	KN002120000	AIR FILTER RUBBER SLEEVE	1
28	KN002050100	AIR FILTER RUBBER SLEEVE CLAMP	2
29	KN002050000	AIR FILTER	1
30	KN002050100	AIR FILTER CLAMP	1
31	KN002130000	AIR FILTER BRACKET	1
32	GB/T70-86 M8x20	SOCKET HEAD BOLT M8x20	4
33	GB/T16674-1996 M8x30	FLANGE BOLT M8x30	4
34	GB/T6187.1-2000 M8	FLANGE NUT M8	6
35	GB/T16674-1996 M8x16	FLANGE BOLT M8x16	2
36	GB/T6187.1-2000 M6	FLANGE NUT M6	3
37	GB/T16674-1996 M6x20	FLANGE BOLT M6x20	1
38	GB/T16674-1996 M6x16	FLANGE BOLT M6x16	8
39	KN001850000	HOSE CLAMP $\Phi 7$	2
40	KN103290000	VACUUM HOSE5 $\Phi 4 \times \Phi 7$	1
41	KN103280000	VACUUM HOSE6 $\Phi 5 \times \Phi 9$	1
42	KN101440000	T-HOSE CONNECTOR 2	1

### 3.10 RADIATOR, COOLING SYSTEM

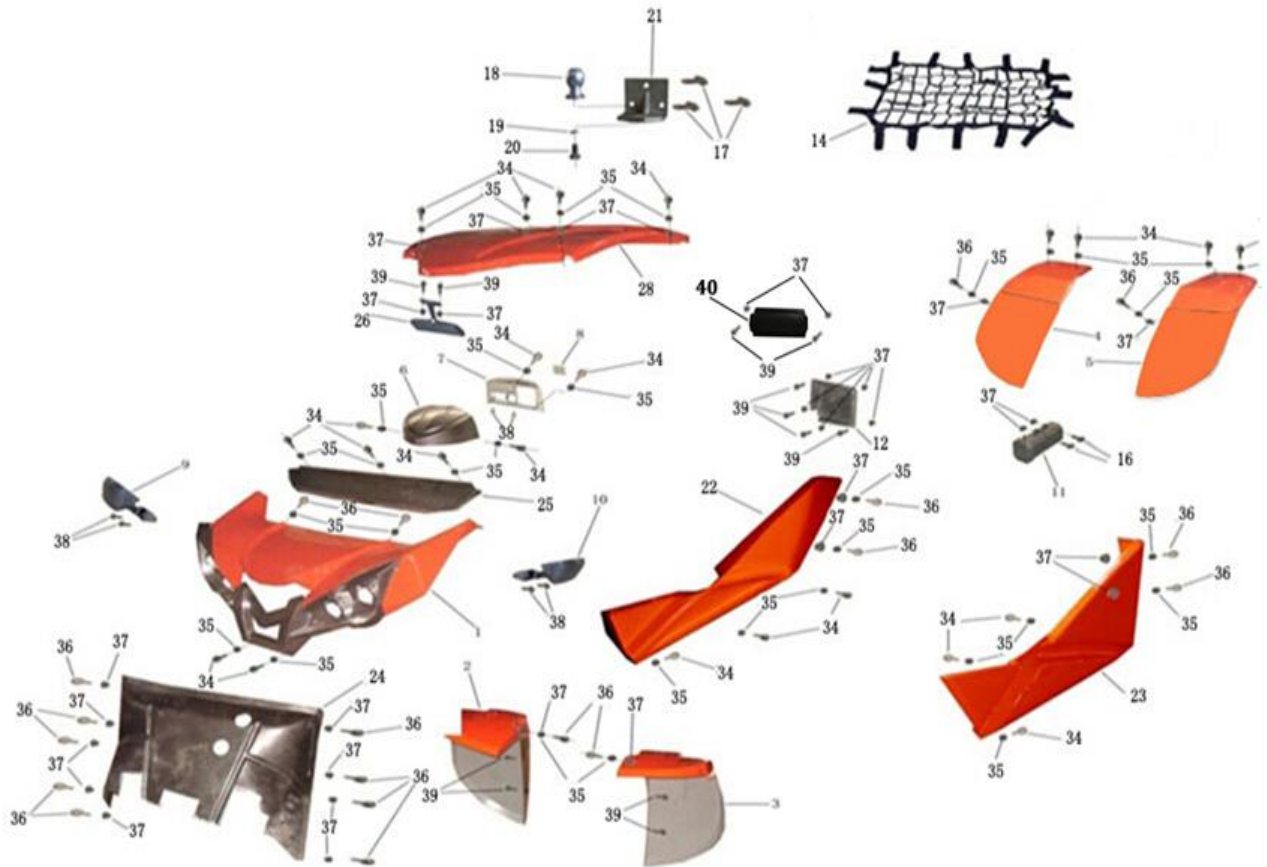


KITS			
REFERENCE ITEMS INCLUDED	KIT PART NUMBER	DESCRIPTION	QTY
3,15,18,19	200-Q079	COOLANT OVERFLOW TANK ASSEMBLY	1
4,5	200-B349	RADIATOR BRACKET KIT	1
16,17	S01-1041	RADIATOR BOLT KIT (1 PAIR)	1
18,19	S01-1022	COOLANT OVERFLOW TANK BOLT KIT (1 PAIR)	1
ITEMS SOLD SEPARATELY			
ITEMS	PART NUMBER	DESCRIPTION	QTY
1	KN102060000	RADIATOR	1
2	KN002080000	RADIATOR FAN	1
6	KN103080000	LOWER RADIATOR HOSE 1	1
7	KN103090000	LOWER RADIATOR HOSE 2	1
8	KN103100000	UPPER RADIATOR HOSE 1	1
9	KN103110000	UPPER RADIATOR HOSE 2	1
10	KN103130000	BYPASS HOSE 1	1
11	KN103140000-1	BYPASS HOSE 2	1
12	11263-SCC0-2000	HOSE CLAMP (25-40)	1
13	KN101210030	T-HOSE CONNECTOR	1
14	KN001830000	HOSE CLAMP (20-32)	1
20	KN001820000	HOSE CLAMP (13-15)	1
21	KN103120000	BYPASS HOSE 3	1
22	KN103330000	BYPASS HOSE 4	1
23	KN103340000	BYPASS HOSE 5	1
24	KN101220000	T-HOSE CONNECTOR	1
25	KN001870000	CLAMP 21.2	1

### 3.10 RADIATOR, COOLING SYSTEM

REFERENCE ONLY ITEMS			
REFERENCE ITEM	PART NUMBER	DESCRIPTION	QTY
1	KN102060000	RADIATOR	1
2	KN002080000	RADIATOR FAN	1
3	KN002070000	COOLANT OVERFLOW TANK ASSEMBLY	1
4	KN101320000	RADIATOR BRACKET 1	1
5	KN101330000	RADIATOR BRACKET 2	1
6	KN103080000	LOWER RADIATOR HOSE 1	1
7	KN103090000	LOWER RADIATOR HOSE 2	1
8	KN103100000	UPPER RADIATOR HOSE 1	1
9	KN103110000	UPPER RADIATOR HOSE 2	1
10	KN103130000	BYPASS HOSE 1	1
11	KN103140000-1	BYPASS HOSE 2	1
12	11263-SCC0-2000	HOSE CLAMP (25-40)	8
13	KN101210030	T-HOSE CONNECTOR	2
14	KN001830000	HOSE CLAMP (20-32)	4
15	KN002070100	COOLANT OVERFLOW TANK CAP	1
16	GB/T16674-1996 M8x20	FLANGE BOLT M8x20	4
17	GB/T6187.1-2000 M8	FLANGE NUT M8	4
18	GB/T16674-1996 M6x16	FLANGE BOLT M6x16	5
19	GB/T6187.1-2000 M6	FLANGE NUT M6	6
20	KN001820000	HOSE CLAMP (13-15)	6
21	KN103120000	BYPASS HOSE 3	1
22	KN103330000	BYPASS HOSE 4	1
23	KN103340000	BYPASS HOSE 5	1
24	KN101220000	T-HOSE CONNECTOR	1
25	KN001870000	CLAMP 21.2	3
26	GB/T16674-1996 M6x20	FLANGE BOLT M6x20	3

### 3.11 PLASTIC BODY PARTS



KITS			
REFERENCE ITEMS INCLUDED	KIT PART NUMBER	DESCRIPTION	QTY
7,8	200-R079	INSTRUMENT CLUSTER PLATE KIT	1
9,10,41	200-N029	SIDE MIRROR KIT (2 MIRRORS)	1
11,38,43	200-A059	TOOL KIT	1
12,39	200-A019	FUSE BOX	1
13,38,42	200-A039	ECU COVER	1
15,16	200-X049	SOFT TOP/REAR NET KIT	1
18,19,20,21,22	200-S030	TRAILER BALL ASSEMBLY	1
27,38,42	200-S089	REARVIEW MIRROR	1

### 3.11 PLASTIC BODY PARTS

ITEMS SOLD SEPARATELY			
ITEMS	PART NUMBER	DESCRIPTION	QTY
1	50199-BDH0-0000	FRONT HOOD	1
2	50196-BDE0-0000	FRONT RIGHT FENDER	1
3	50195-BDE0-0000	FRONT LEFT FENDER	1
4	50198-BDE0-0000	REAR RIGHT FENDER	1
5	50197-BDE0-0000	REAR LEFT FENDER	1
6	50334-BDE0-0000	INSTRUMENT COVER	1
9	88110-BDE0-E000	RIGHT SIDE (PASSENGER) MIRROR	1
10	88120-BDE0-E000	LEFT SIDE (DRIVER) MIRROR	1
15	88131-BDH0-0001	REAR PROTECTION NET	1
23	KN003190000	RIGHT SIDE PANEL	1
24	KN003180000	LEFT SIDE PANEL	1
25	KN003210000	FRONT FIREWALL COVER	1
26	KN003200000	FRONT UPPER DECORATIVE SHEET	1
28	KN003150000	PLASTIC ROOF	1

### 3.11 PLASTIC BODY PARTS

REFERENCE ONLY ITEMS			
REFERENCE ITEM	PART NUMBER	DESCRIPTION	QTY
1	50199-BDH0-0000	FRONT HOOD	1
2	50196-BDE0-0000	FRONT RIGHT FENDER	1
3	50195-BDE0-0000	FRONT LEFT FENDER	1
4	50198-BDE0-0000	REAR RIGHT FENDER	1
5	50197-BDE0-0000	REAR LEFT FENDER	1
6	50334-BDE0-0000	INSTRUMENT COVER	1
7	50201-BDH0-0000	INSTRUMENT PLATE	1
8	50202-BDJ0-0000	PLASTIC PLATE	1
9	88110-BDE0-E000	RIGHT SIDE (PASSENGER) MIRROR	1
10	88120-BDE0-E000	LEFT SIDE (DRIVER) MIRROR	1
11	50340-BDH0-0000	TOOL KIT	1
12	KN003160000	ECU COVER	1
14	88131-BDH0-0001	REAR PROTECTION NET	1
16	GB/T16674-1996 M6x25	FLANGE BOLT M6x25	2
17	GB/T16674-1996 M10x25	FLANGE BOLT M10x25	3
18	KL008060000	TRAILER BALL	1
19	GB/T93-87 16	SPRING WASHER $\varnothing$ 16	1
20	GB/T5782-2000 M16x25	BOLT M16x25	1
21	89401-BDA0-0000	TRAILER BALL BRACKET	1
22	KN003190000	RIGHT SIDE FENDER	1
23	KN003180000	LEFT SIDE FENDER	1
24	KN003210000	FRONT FIREWALL COVER	1
25	KN003200000	FRONT UPPER DECORATIVE SHEET	1
26	88130-BDHO-0000	REARVIEW MIRROR	1
28	KN003150000	PLASTIC ROOF	1
34	KN108580000	CROSS HEAD SCREW M6x16	23
35	KN103310000	FENDER RUBBER RING	45
36	KN108590000	CROSS HEAD SCREW M6x25	19
37	GB/T6187.1-2000 M6	FLANGE NUT M6	32
38	GB/T16674-1996 M6x14	SCREW M6x14	4
39	GB/T16674-1996 M6x16	FLANGE BOLT M6x16	6
40	KN003160010	WIRE HARNESS COVER	1

This diagram illustrates the components of a vehicle's electrical system, arranged in an exploded view. The components are numbered as follows:

- 1: Two round indicator lights with black housings.
- 2: Two round indicator lights with black housings.
- 3: A round indicator light with a black housing.
- 4: A round indicator light with a black housing.
- 5: A black rectangular control module.
- 6: A black plastic bracket for mounting lights.
- 7: A black plastic bracket for mounting lights.
- 8: A round horn or buzzer.
- 9: A green push-button.
- 10: A small black electronic component.
- 11: A black rectangular fuse block.
- 12: A black rectangular fuse block.
- 13: A bundle of black wires.
- 14: A large, complex bundle of black wires.
- 15: A coiled black cable.
- 16: A small yellow component.
- 17: A small yellow component.
- 18: A small blue component.
- 19: A small blue component.
- 20: A black rectangular battery with "AYAYA" branding.
- 21: A long, thin black strip.
- 22: A round indicator light with a red lens.
- 23: A round indicator light with a blue lens.
- 24: A black plastic component.
- 25: A small black electronic component.
- 26: A small black electronic component.
- 27: A small black electronic component.
- 28: A small black electronic component.
- 29: A small black electronic component.
- 30: A small black electronic component.
- 31: A small black electronic component.
- 32: A small black electronic component.
- 33: A small black electronic component.
- 34: A small black electronic component.
- 35: A small black electronic component.
- 36: A small black electronic component.

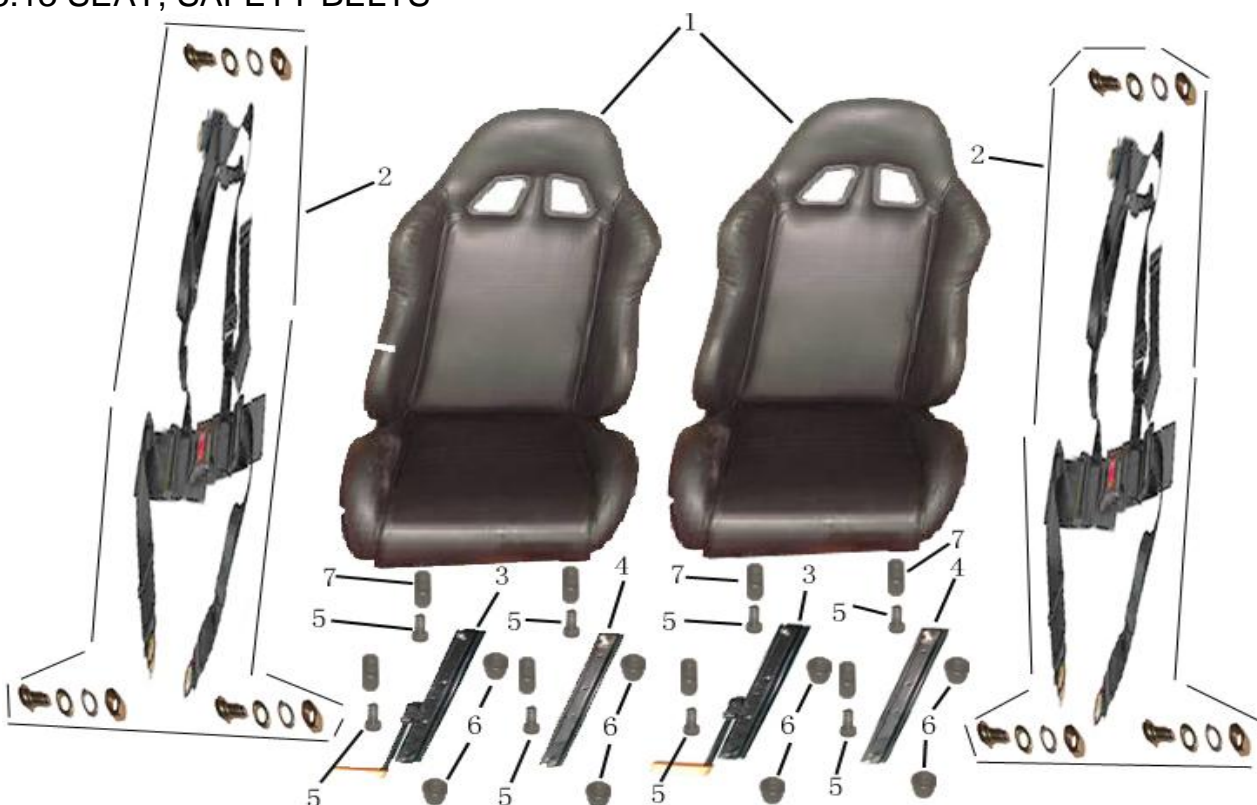
KITS			
REFERENCE ITEMS INCLUDED	KIT PART NUMBER	DESCRIPTION	QTY
16,17	200-K059	BATTERY TERMINALS	1
24.25	200-E129	REAR LICENSE PLATE LIGHT	1
33	200-S099	WINCH ASSEMBLY	1
ITEMS SOLD SEPARATELY			
ITEMS	PART NUMBER	DESCRIPTION	QTY
1	33130-BDH0-E000	LOW BEAM HEADLIGHT	1
2	33120-BDH0-E000	HIGH BEAM HEADLIGHT	1
3	33450-BDH0-E002	FRONT RIGHT TURN SIGNAL	1
4	33450-BDH0-E001	FRONT LEFT TURN SIGNAL	1
5	KN104070000	2WD/4WD CONTROLLER	1
8	38110-BCA0-E000	HORN	1
9	KN104010900	HORN SWITCH	1
10	35900-BDE0-0000	CIGARETTE LIGHTER	1
11	3510A-BDH0-0000	TRIPLE SWITCH	1
12	KN104050000-2	INSTRUMENT CLUSTER	1
14	KN104020000-2	WIRE HARNESS	1
15	S11-3724180CA	ENGINE WIRE HARNESS	1
18	KN104080000	FLASHER RELAY	1
19	KN004040000	MAIN RELAY	1
20	KN004010000	BATTERY	1
21	50329-BDE0-0000	BATTERY RUBBER STRAP	1
22	33701-BDH0-E000	TAIL LIGHT/BRAKE LIGHT	1
23	33450-BDH0-E000	REAR TURN SIGNAL	1
30	S11-3605010JA-E4	ECU	1
	33130-L001	LOW BEAM HEADLIGHT BULB	1
	33120-H001	HIGH BEAM HEADLIGHT BULB	1



### 3.12 ELECTRICAL PARTS

REFERENCE ONLY ITEMS			
REFERENCE ITEM	PART NUMBER	DESCRIPTION	QTY
1	33130-BDH0-E000	LOW BEAM HEADLIGHT	2
2	33120-BDH0-E000	HIGH BEAM HEADLIGHT	2
3	33450-BDH0-E002	FRONT RIGHT TURN SIGNAL	1
4	33450-BDH0-E001	FRONT LEFT TURN SIGNAL	1
5	KN104070000	2WD/4WD CONTROLLER	1
6	33132-BDH0-E000	FRONT RIGHT HEADLIGHTS BRACKET	1
7	33131-BDH0-E000	FRONT LEFT HEADLIGHTS BRACKET	1
8	38110-BCA0-E000	HORN	1
9	KN104010900	HORN SWITCH	1
10	35900-BDE0-0000	CIGARETTE LIGHTER	1
11	3510A-BDH0-0000	TRIPLESWITCH	1
12	KN104050000-2	INSTRUMENT CLUSTER	1
13	KN104050100	SPEED SENSOR CABLE	1
14	KN104020000-2	WIRE HARNESS	1
15	S11-3724180CA	ENGINE WIRE HARNESS	1
16	KN001290100	ANODE BATTERY CLIP	1
17	KN001290200	KATHODE BATTERY CLIP	1
18	KN104080000	FLASHER RELAY	1
19	KN004040000	MAIN RELAY	5
20	KN004010000	BATTERY	1
21	50329-BDE0-0000	BATTERY RUBBER STRAP	1
22	33701-BDH0-E000	TAIL LIGHT/BRAKE LIGHT	2
23	33450-BDH0-E000	REAR TURN SIGNAL	2
24	33200-BCA0-E010	REAR LICENSE PLATE LIGHT	1
25	GB/T845-85 ST4.2x12	TAPPING SCREW ST4.2x12	10
26	GB/T6187.1-2000 M5	FLANGE NUT M5	8
27	GB/T818-2000 M5x20	BOLT M5x20	14
28	GB/T16674-1996 M6x16	FLANGE BOLT M6x16	1
29	GB/T6187.1-2000 M6	FLANGE NUT M6	1
30	S11-3605010JA-E4	ECU	1
31	GB/T16674-1996 M8x20	FLANGE BOLT M8x20	2
32	GB/T6187.1-2000 M8	FLANGE NUT M8	2
33	KL008070000	WINCH ASSEMBLY	1
34	KL008070100	WINCH CONTROLLER	1
35	KL008070200	WINCH	1
36	KL008070300	WINCH SWITCH	1
37	KN004030000	RELAY	3
38	KN006030000	FUSE 30A	2
39	KN006040000	FUSE 20A	1
40	KN006050000	FUSE 10A	1
41	KN006060000	FUSE 15A	4
	33130-L001	LOW BEAM HEADLIGHT BULB	2
	33120-H001	HIGH BEAM HEADLIGHT BULB	2

### 3.13 SEAT, SAFETY BELTS



KITS			
REFERENCE ITEMS INCLUDED	KIT PART NUMBER	DESCRIPTION	QTY
3,4,5,6,7	200-J012	SEAT TRACK ASSEMBLY (EACH)	1
ITEMS SOLD SEPARATELY			
ITEMS	PART NUMBER	DESCRIPTION	QTY
1	77210-BDH0-0000	SEAT	1
2	77220-BCC0-E000	4-POINT SAFETY HARNESS	1
REFERENCE ONLY ITEMS			
REFERENCE ITEM	PART NUMBER	DESCRIPTION	QTY
1	77210-BDH0-0000	SEAT	2
2	77220-BCC0-E000	4-POINT SAFETY HARNESS	2
3	77210-BDH0-0001	TRACK WITH RELEASE LEVER	2
4	77210-BDH0-0002	TRACK WITHOUT RELEASE LEVER	2
5	GB/T16674-1996 M8x65	FLANGE BOLT M8x65	8
6	GB/T6187.1-2000 M8	FLANGE NUT M8	8
7	KN101150000	STEEL BUSH $\varnothing 8.5 \times \varnothing 20 \times 50$	8