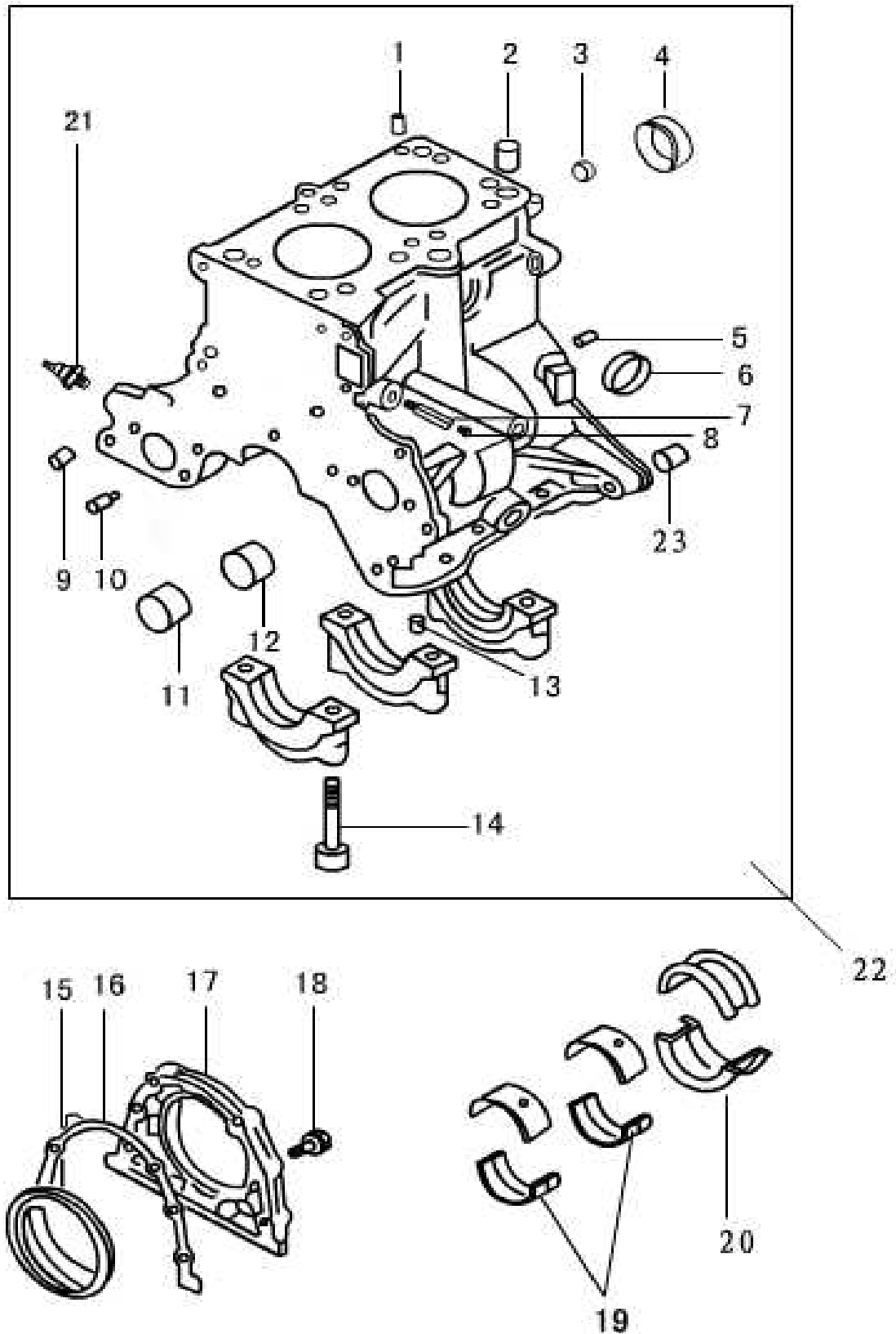
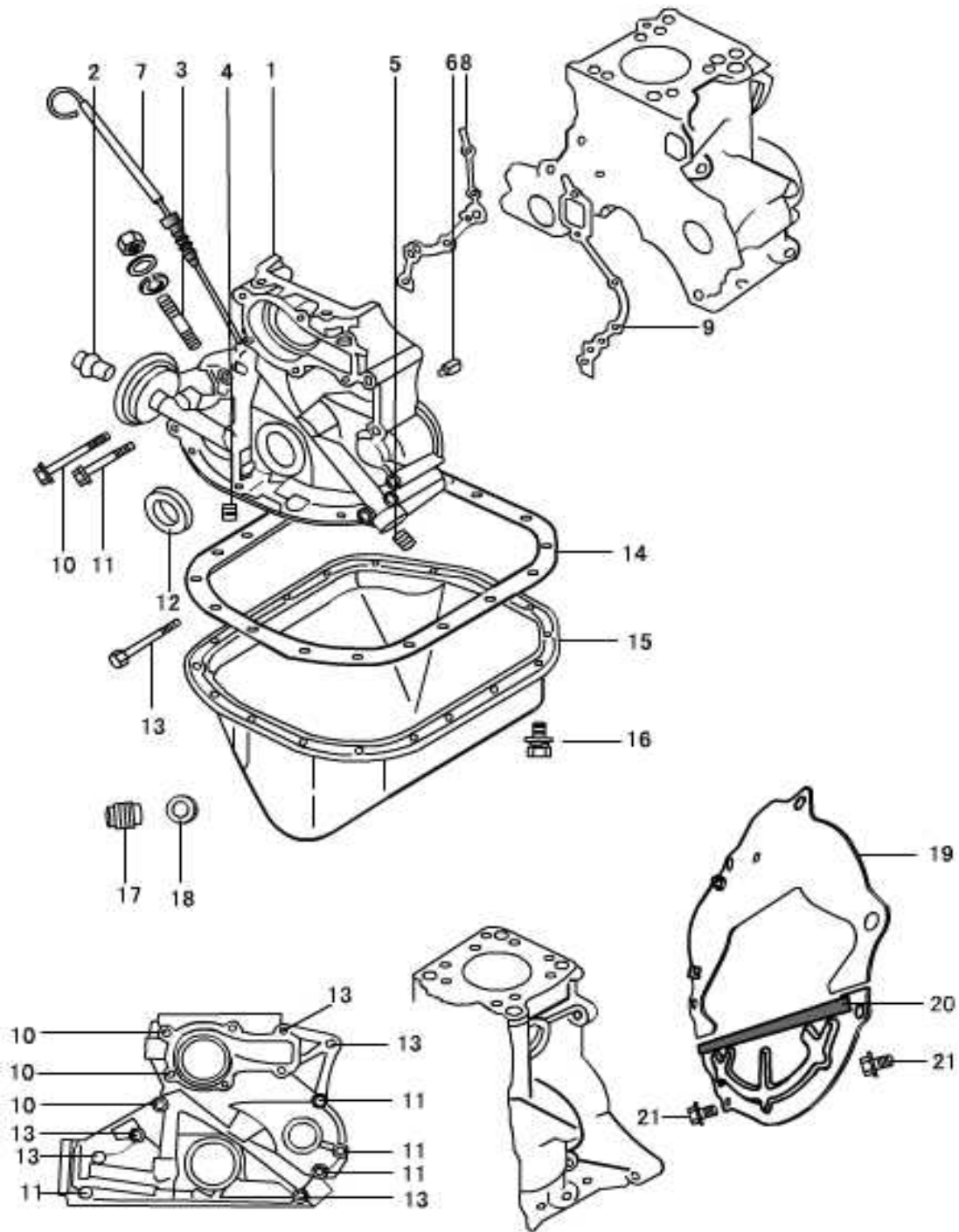


1 CYLINDER BLOCK PART



[illegible]

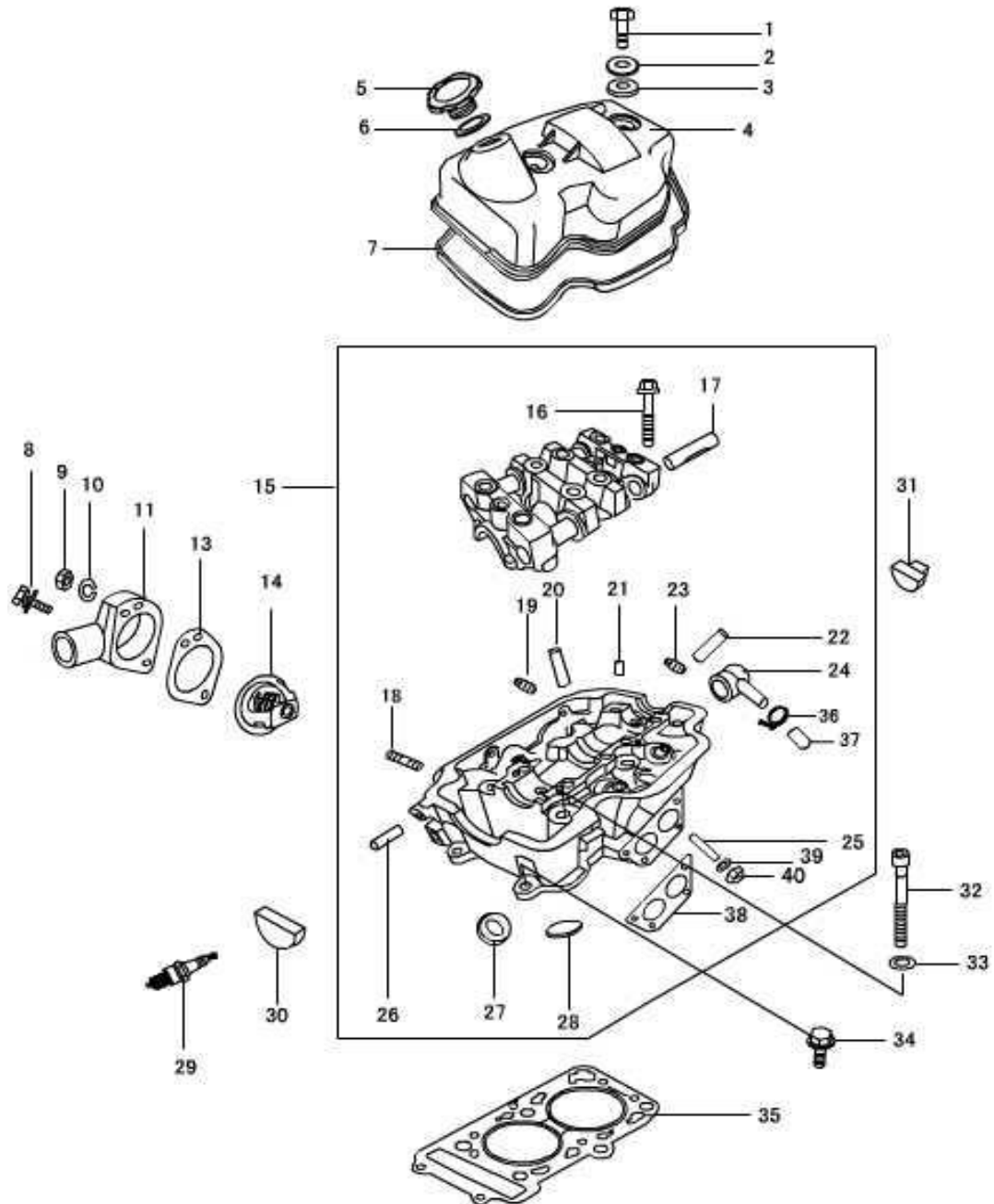
2 SPROCKET COVER AND OIL PAN PART (1)



| No. | Code name | Description | Qty |
|-----|------------|----------------------------------|-----|
| 1 | 276Q—02201 | Sprocket cover | 1 |
| 2 | 270Q—02202 | Oil filter threaded sleeve | 1 |
| 3 | GB/T900—88 | Taper bolt AGM8—M8×22—8.8 | 1 |
| 4 | QTB23 | Hexagon-headed taper bolt NTP1/4 | 1 |
| 5 | QTB23 | Hexagon-headed taper bolt NTP3/8 | 1 |

[illegible]

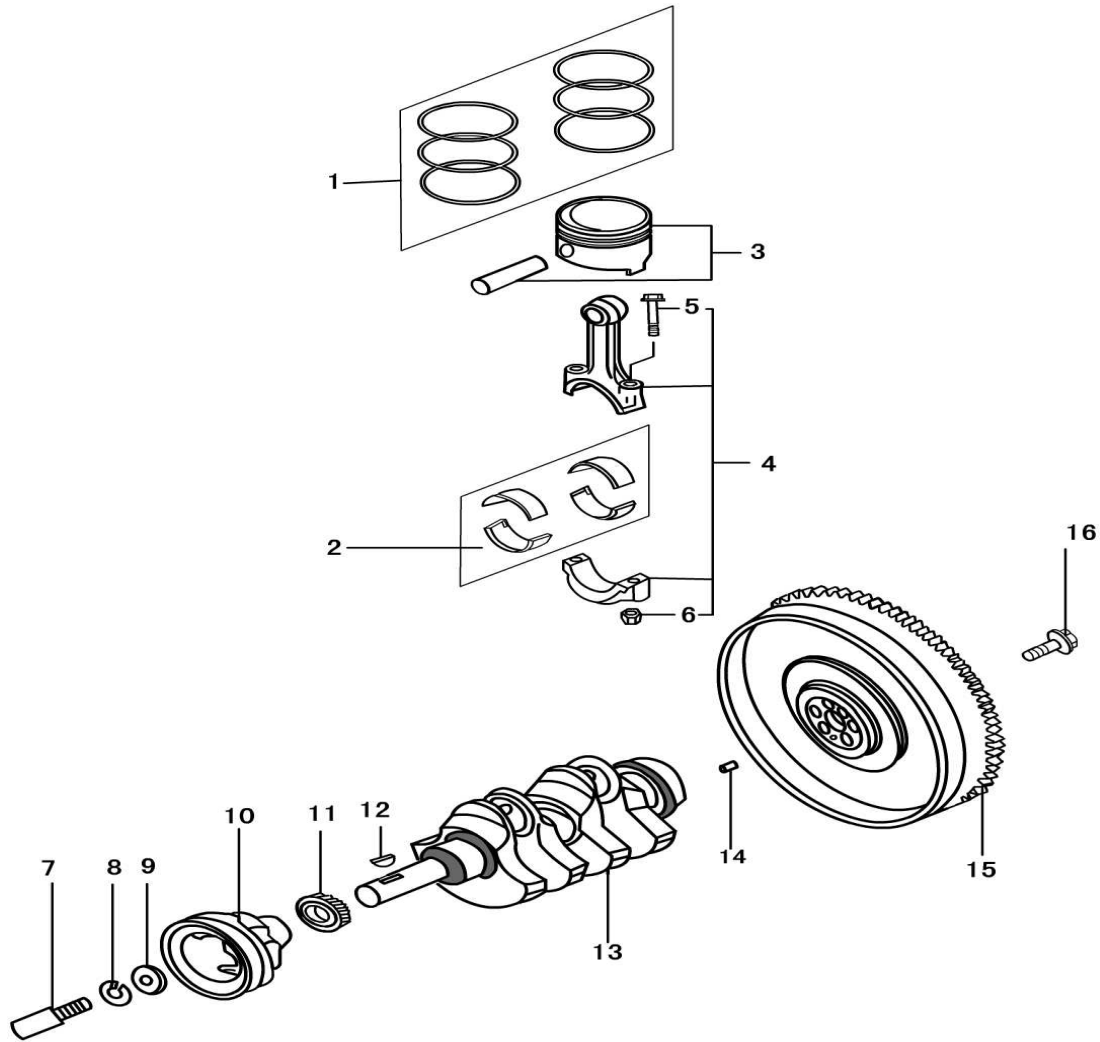
3 CYLINDER HEAD PART (1)



| No. | Code name | Description | Qty |
|-----|---------------|--|-----|
| 1 | GB/T5782—1986 | Bolt M8×40 | 2 |
| 2 | 270Q—01009 | washer of cylinder head cover bolt | 2 |
| 3 | 270Q—01011 | Rubber pad of cylinder head cover bolt | 2 |
| 4 | 276Q—01300 | Cylinder head cover assembly | 1 |
| 5 | 270Q—01400B | Filler cap assembly | 1 |
| 6 | 270Q—01403 | Filler cap rubber washer | 1 |
| 7 | 270Q—01012B | Seal ring of cylinder head cover | 1 |

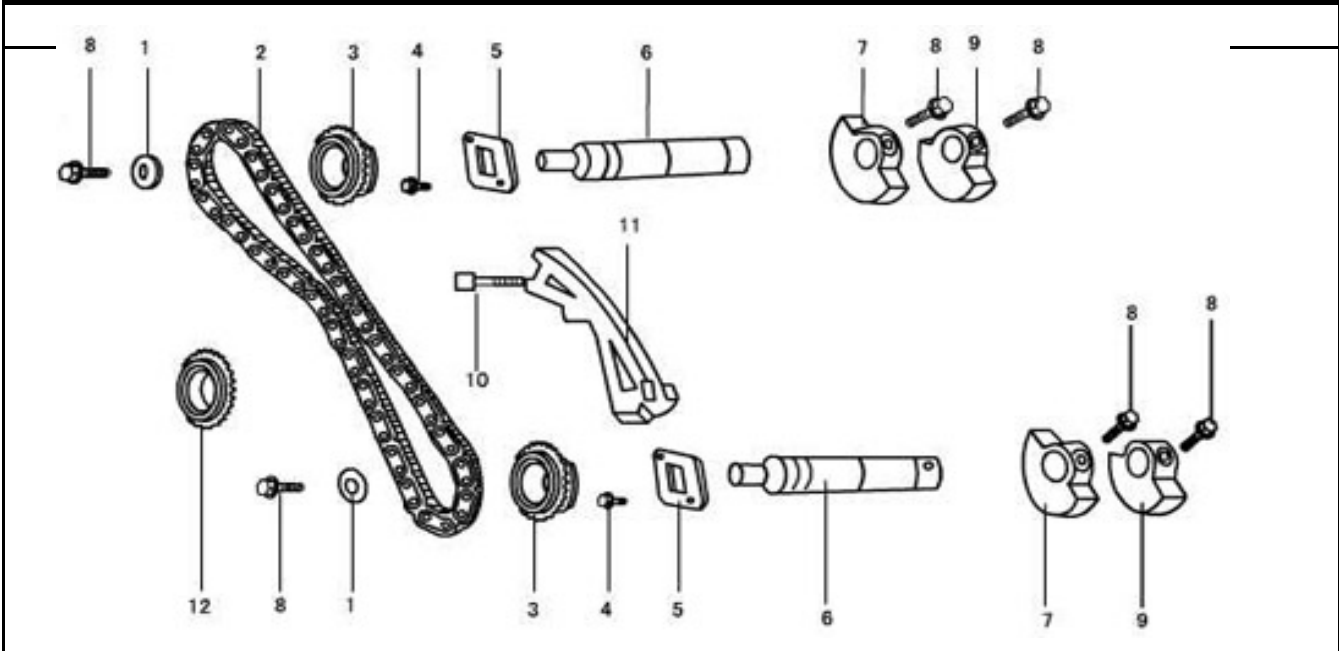
| 3 CYLINDER HEAD PART (2) | | | |
|--------------------------|------------------|---|-----|
| No. | Code name | Description | Qty |
| 8 | GB/T9074.17—1988 | Unit bolt M8×30 | 1 |
| 9 | QTB15 | Nut M8—8 | 5 |
| 10 | GB/T93—1987 | Spring washer φ8 | 5 |
| 11 | 270Q—01017 | Thermostat housing | 1 |
| 13 | 270Q—01016 | Thermostat gasket | 1 |
| 14 | 270Q—01015 | Thermostat | 1 |
| 15 | 270Q—01100 | Cylinder head and camshaft bearing part | |
| 16 | 270Q—01109 | Camshaft bearing bushing cap bolt | 8 |
| 17 | 270Q—01007 | Valve rocker arm shaft | 4 |
| 18 | GB/T898—1988 | Stud AGM8×25—8.8 | 4 |
| 19 | GB/T899—88 | Stud AGM8×28—8.8 | 1 |
| 20 | 270Q—01104 | Inlet valve guide | 2 |
| 21 | QTB40 | Locating pin φ 6×14 | 6 |
| 22 | 270Q—01105 | Exhaust valve guide | 2 |
| 23 | GB/T899—88 | bolt | 1 |
| 24 | 270Q—01023A | Hexagon -headed taper plug | 1 |
| 25 | GB/T898—1988 | Stud AGM8-M8×20—8.8 | 4 |
| 26 | 270Q—01018 | Minor water pipe | 1 |
| 27 | 270Q—01102 | Intake valve seat | 2 |
| 28 | 270Q—01103B | Exhaust valve seat | 2 |
| 29 | 270Q—01019B | Water Temperature sender unit | 1 |
| 30 | 270Q—01013 | Front Semi-Circle Oil Seal | 1 |
| 31 | 270Q—01014 | Rear Semi-Circle Oil Seal | 1 |
| 32 | 270Q—01022 | Cylinder head bolt | 6 |
| 33 | GTB30 | head bolt washer φ 21× φ 11×3 | 6 |
| 34 | GB/T9074.17—1988 | Bolt assembly M8×28 | 2 |
| 35 | 276Q—01021 | Cylinder head gasket | 1 |
| 36 | 270Q—01025 | Rubber blanking plug | 1 |
| 37 | ZB/TT32005.1—88 | hose clamp | 1 |
| 38 | 270Q—01024 | Exhaust pipe gasket | 1 |
| 39 | GB/T93—1987 | Washer8 | 4 |
| 40 | QTB15 | Nut M8—8 | 4 |
| | | | |
| | | | |
| | | | |
| | | | |
| | | | |

4 PISTON , CONNETING ROD AND CRANKSHAFT PART (1)

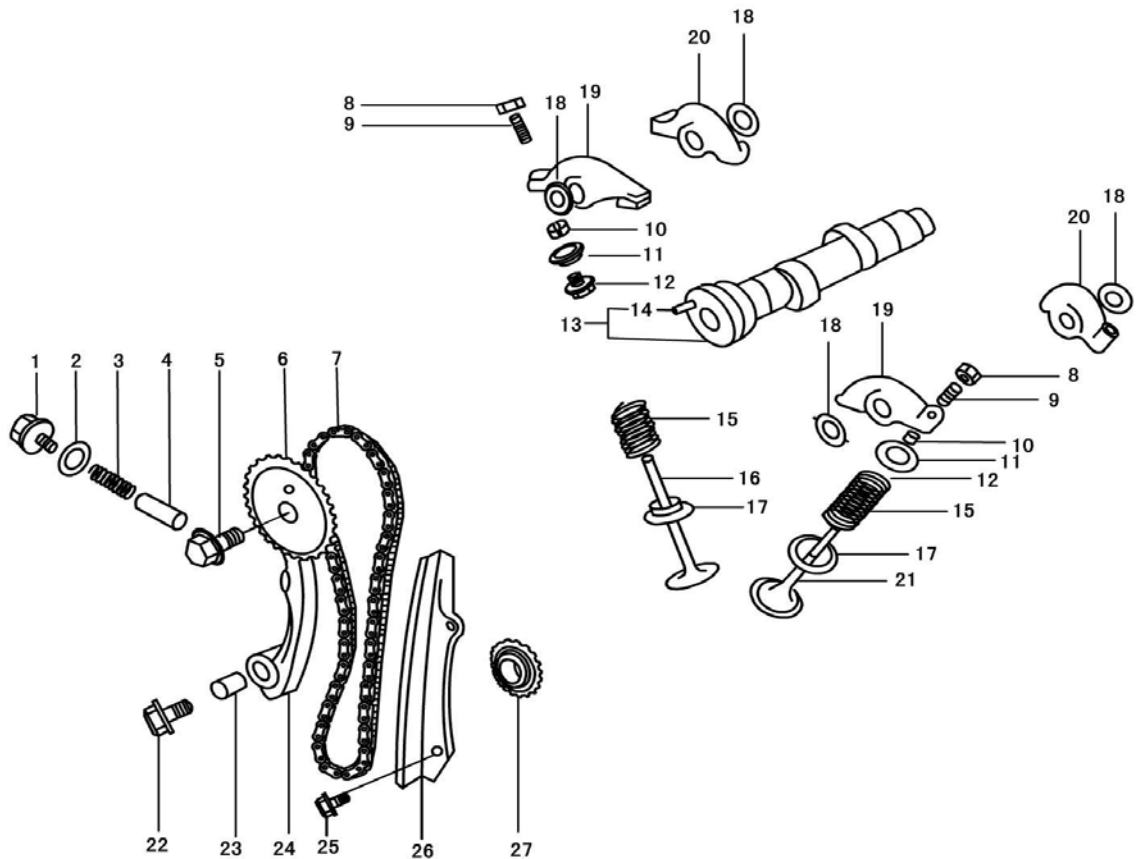


| No. | Code name | Description | Qty |
|-----|--------------|----------------------------|-----|
| 1 | 276Q-03002 | Piston ring (1) | 2 |
| | 276Q-03003 | Piston ring (2) | 2 |
| | 276Q-03200 | Piston ring (3) | 2 |
| 2 | 270Q-03006 | Connecting rod bearing | 4 |
| 3 | 276Q-03001 | Piston | 2 |
| | 276Q-03004B | Piston Pin | 2 |
| 4 | 270Q-03100 | Connecting rod assembly(1) | 2 |
| | | Connecting rod assembly(2) | 2 |
| 5 | 270Q-03103 | Connecting rod bolt | 4 |
| 6 | 270Q-03104 | Connecting rod nut | 4 |
| 7 | 270Q-04001 | front pulley bolt | 1 |
| 8 | GB/T859-1987 | Spring washer 12 | 1 |
| 9 | 270Q-04002 | Washer | 1 |
| 10 | 270Q-04003 | Crankshaft belt pulley | 1 |

5 BALANCING SHAFT PART

[illegible]

6 CAMSHAFT AND CHAIN TRAIN PART (1)

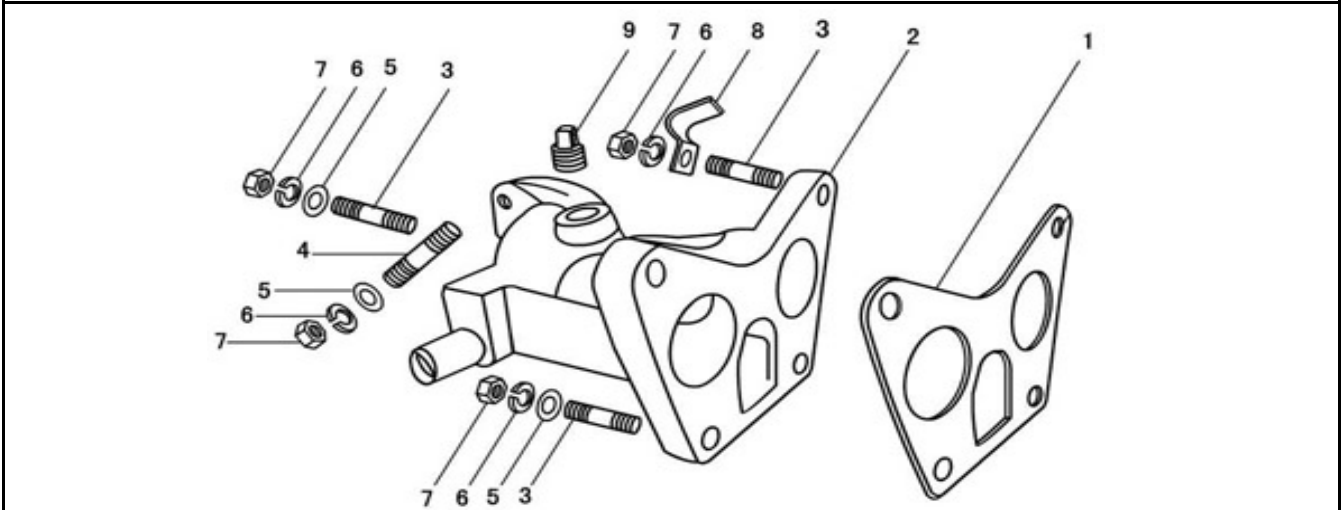


| No. | Code name | Description | Qty |
|-----|-------------|---|-----|
| 1 | 270Q—05400 | Bolt assembly | 1 |
| 2 | 270Q—05007 | Washer | 1 |
| 3 | 270Q—05005A | Tensioning spring | 1 |
| 4 | 270Q—05004 | Tensioning spring plate | 1 |
| 5 | QTB13 | Small hexagon-headed bolt with edge M12×1.25×30 | 1 |
| 6 | 270Q—05002A | Camshaft timing sprocket wheel | 1 |
| 7 | 270Q—05100 | Timing chain assembly | 1 |
| 8 | 270Q—01502 | Valve clearance adjusting nut | 4 |
| 9 | 270Q—01501 | Valve clearance adjusting bolt | 4 |
| 10 | 270Q—01004 | Valve locker | 8 |
| 11 | 270Q—01003 | Retainer | 4 |
| 12 | 270Q—01200 | Stem seal | 4 |
| 13 | 276Q—05001 | Camshaft | 1 |
| 14 | QTB40 | Dowel pin $\phi 6 \times 14$ | 1 |
| 15 | 276Q—01002A | Valve spring | 4 |
| 16 | 270Q—01005A | Intake Valve | 2 |
| 17 | 270Q—01001 | Lower seat of valve spring | 4 |

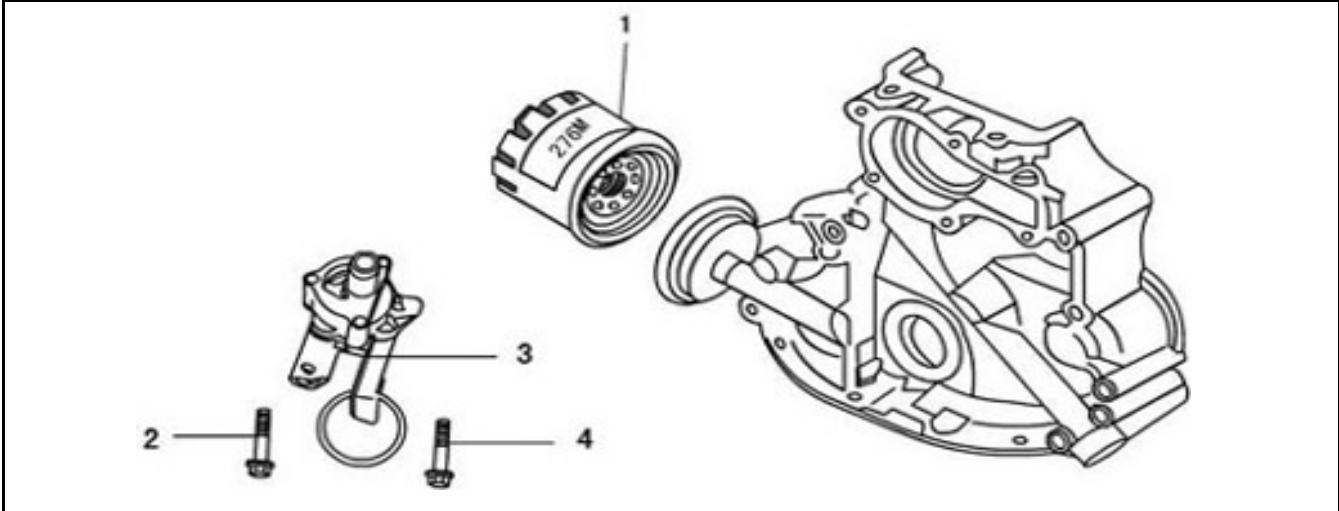
6 CAMSHAFT AND CHAIN TRAIN PART (2)

[illegible]

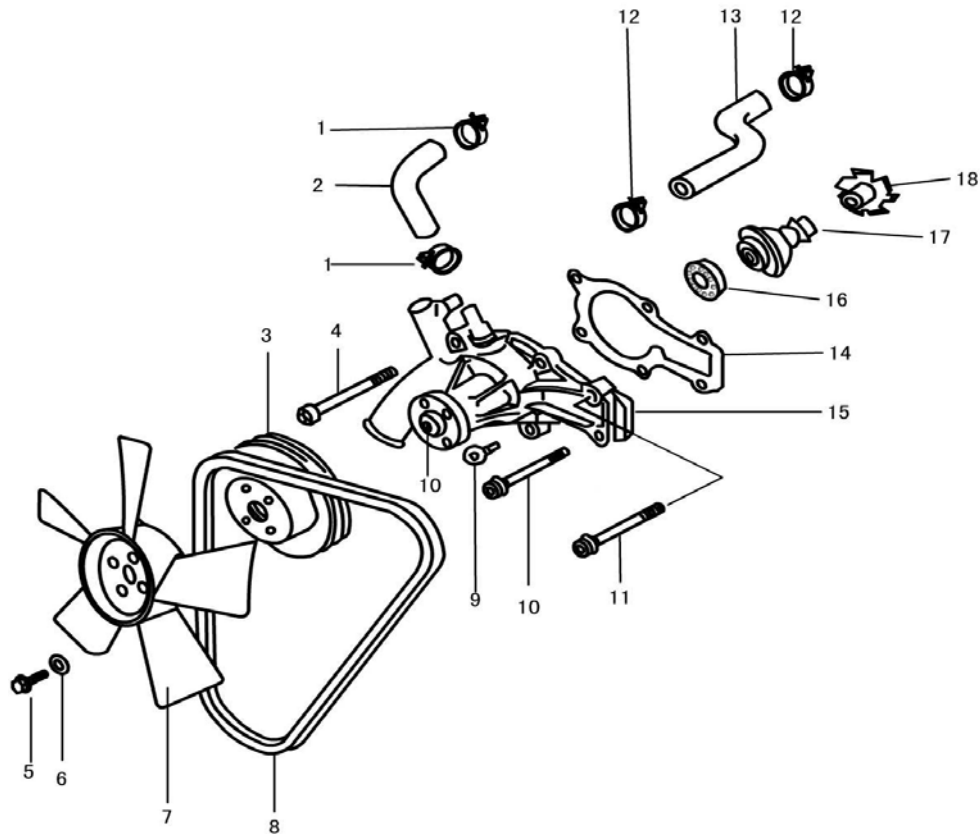
7 INTAKE MANIFOLD PART

[illegible]

| |
|--------------------------------|
| 8 OIL FILTER AND OIL PUMP PART |
|--------------------------------|

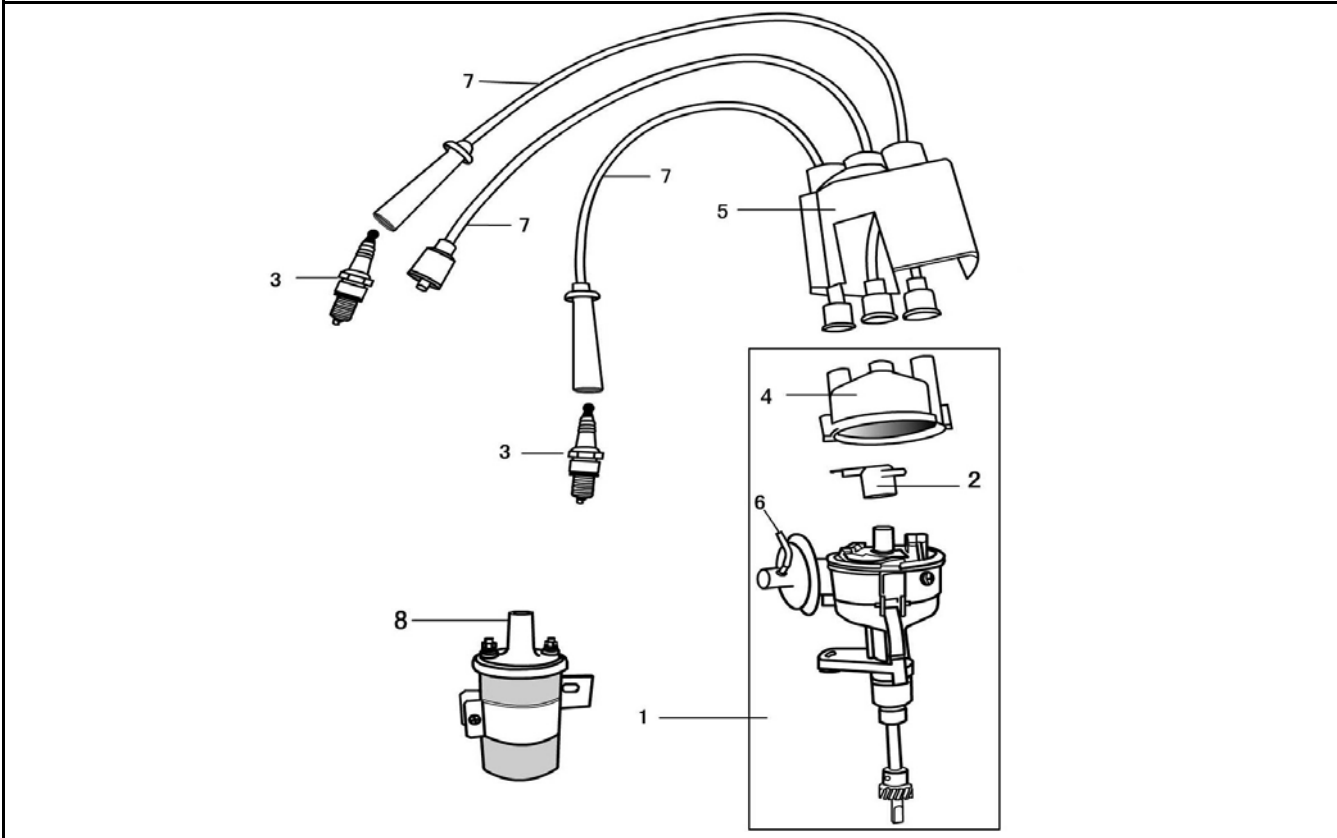
[illegible]

9 WATER PUMP AND FAN PART

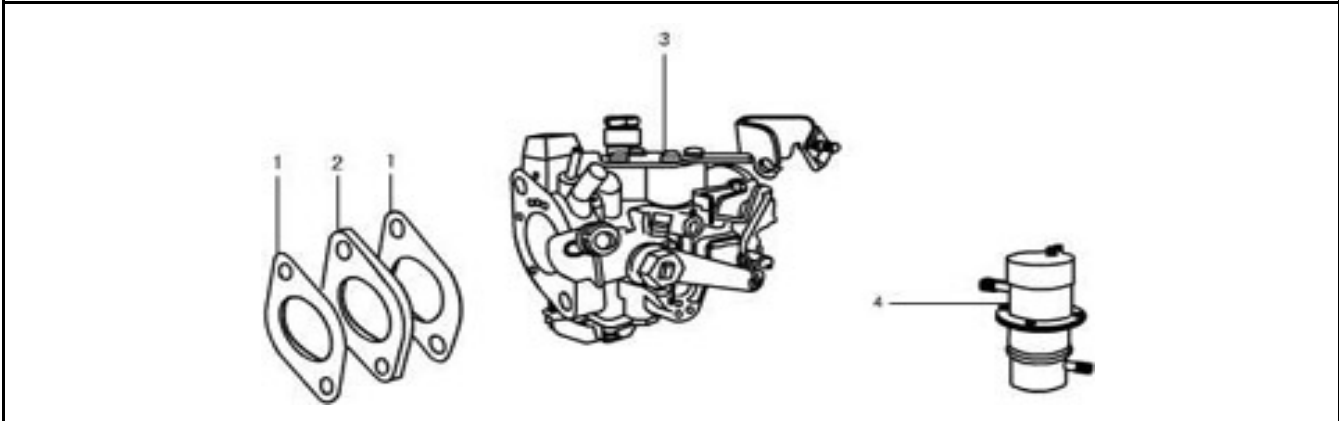


| No. | Code name | Description | Qty |
|-----|------------------|-------------------------------------|-----|
| 1 | ZB/TT32005.1—88 | Hose clamp | 2 |
| 2 | 270Q—19011 | Rubber pipe (2) | 1 |
| 3 | 270Q—19013 | water pump pulley | 1 |
| 4 | QTB10 | Hexagon-headed bolt with edge M8×88 | 2 |
| 5 | GB/T9074.15—1988 | Hexagon head bolt M6×20 | 4 |
| 6 | QTB32 | Washer 7.5 | 4 |
| 7 | 276Q—19200 | Fan assembly | 1 |
| 8 | QTB93A | Fan belt AV10×845 | 1 |
| 9 | QTB10 | Hexagon-headed bolt with edge M8×23 | 2 |
| 10 | 270Q—19002B | bolt | 1 |
| 11 | QTB10 | Hexagon-headed bolt with edge M8×78 | 2 |
| 12 | ZB/TT32005.1—88 | Hose clamp | 2 |
| 13 | LJ276MT—2—19009 | Rubber pipe (1) | 1 |
| 14 | 276Q—19001 | Water pump gasket | 1 |
| 15 | 276Q—19100 | Water pump assembly | 1 |
| 16 | GB276—64 | Roller bearing E60101 | 2 |
| 17 | 270Q—F12—00 | Water seal assembly | 1 |
| 18 | 276Q—19003 | Impeller | 1 |

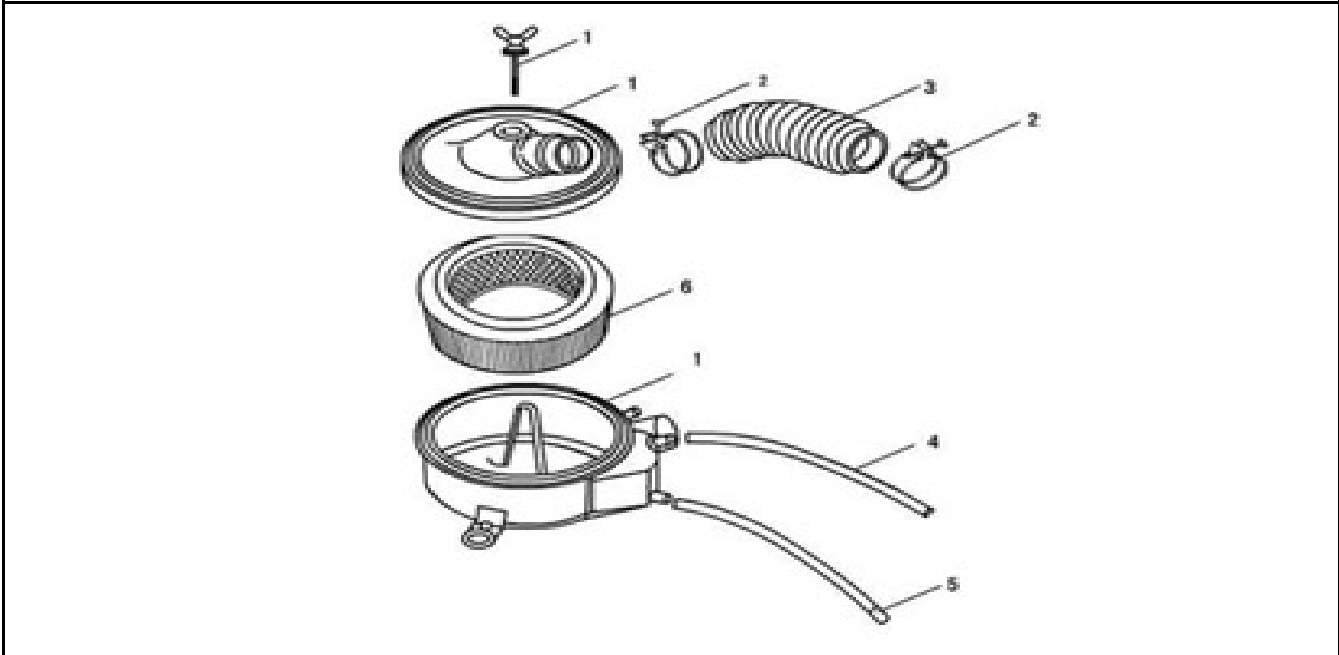
10 DISTRIBUTOR AND ITS LINE UNIT

[illegible]

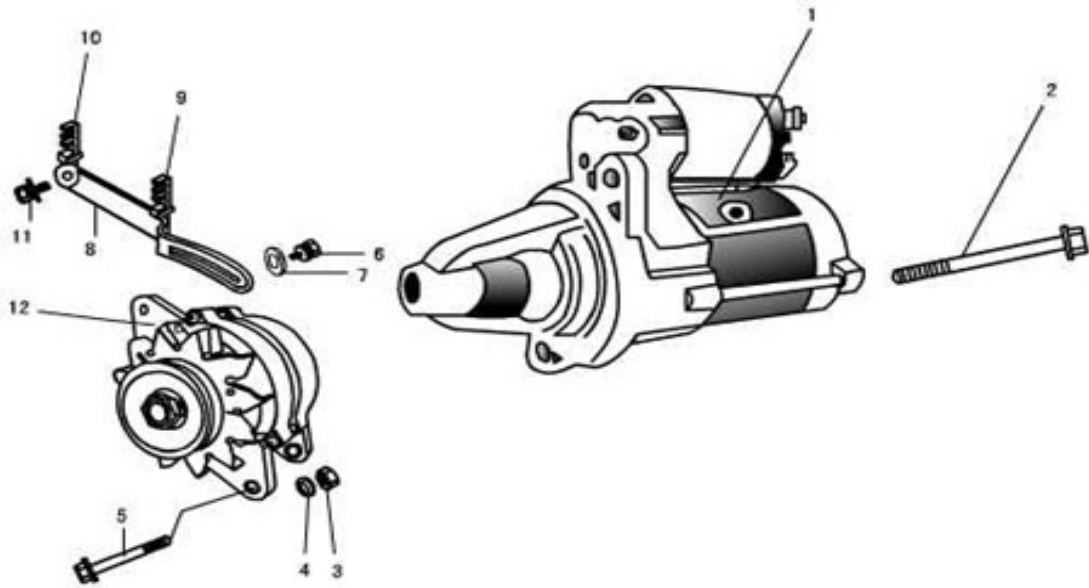
11 CARBURETOR PART

[illegible]

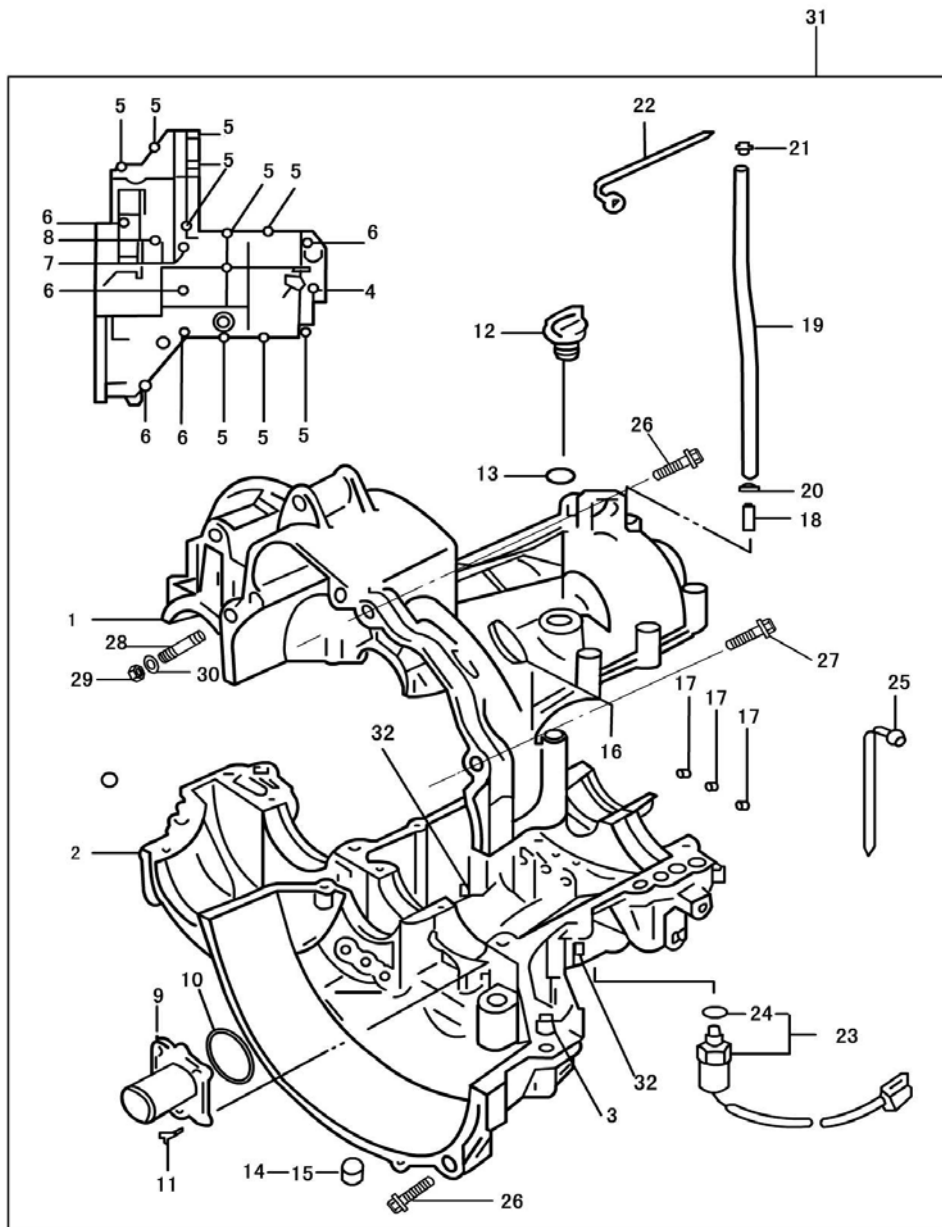
12 AIR FILTER AND PIPE LINE PART

[illegible]

13 STARTER , ALTERNATOR AND THEIR FASTENING PIECE

[illegible]

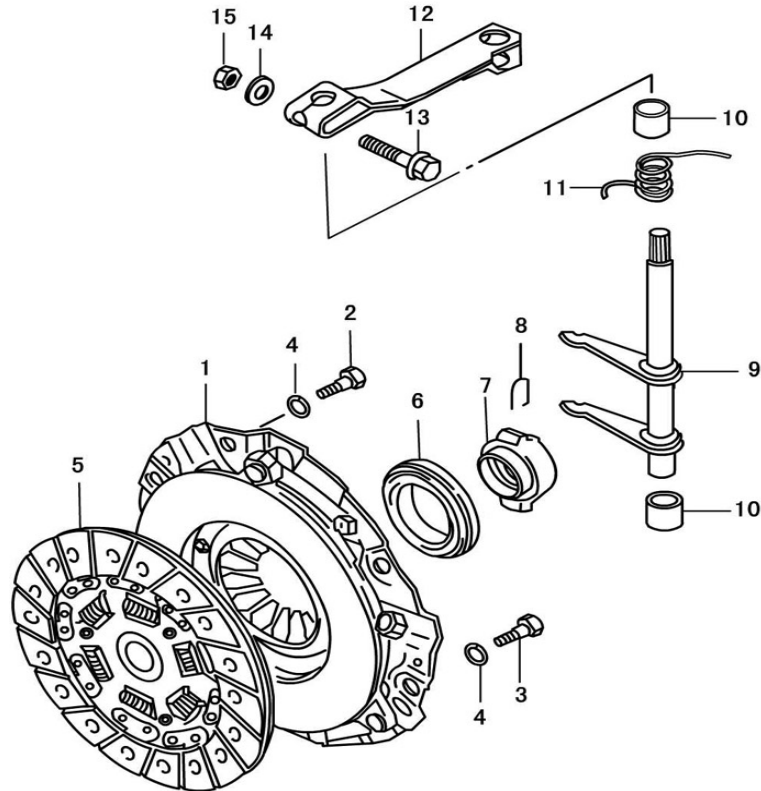
14 TRANSMISSION TANK (1)



| No. | Code name | Description | Qty |
|-----|------------|--|-----|
| 1 | 1701111 | Upper housing of transmission | 1 |
| 2 | 1701112 | Lower housing of transmission | 1 |
| 3 | 1701113 | Locating pin | 2 |
| 4 | GBT5787—86 | Bolt M6×40 | 1 |
| 5 | GBT5787—86 | Bolt M8×50 | 10 |
| 6 | GBT5787—86 | Bolt M8×70 | 5 |
| 7 | GBT5787—86 | Bolt M8×90 | 1 |
| 8 | GBT5787—86 | Bolt M8×135 | 1 |
| 9 | 1701301 | Baffle plate of seal ring of the first shaft | 1 |

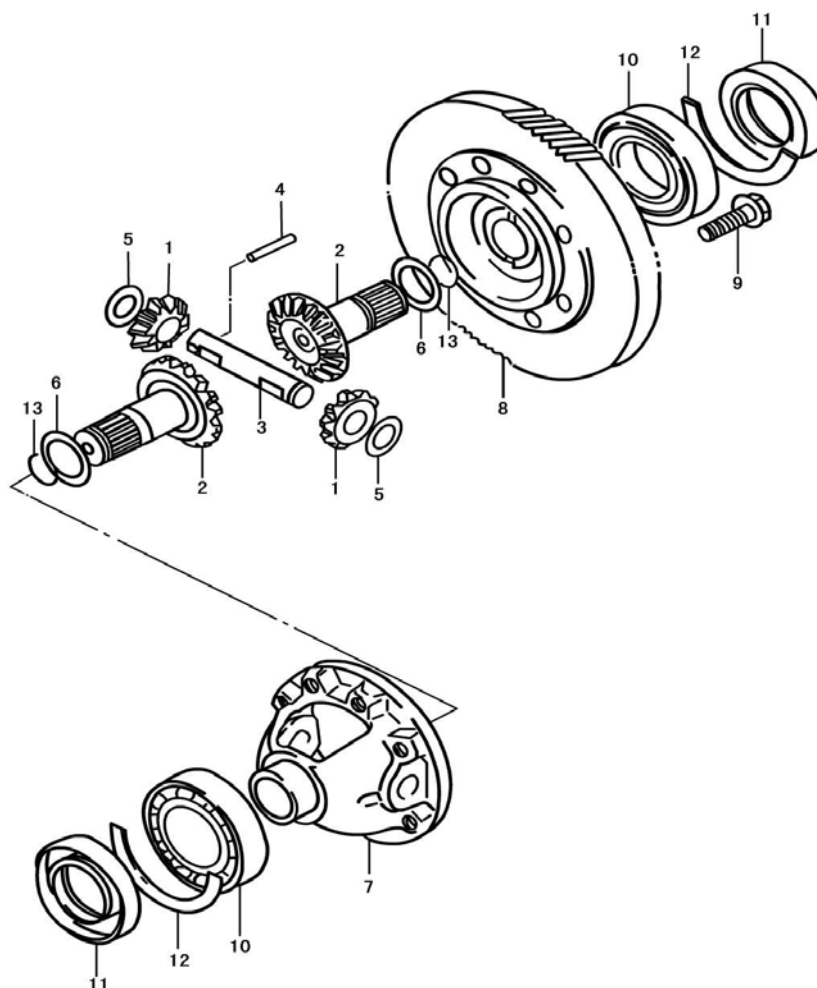
[illegible]

15 CLUTCH, SHIFTER SHAFT AND ROCKER ARM



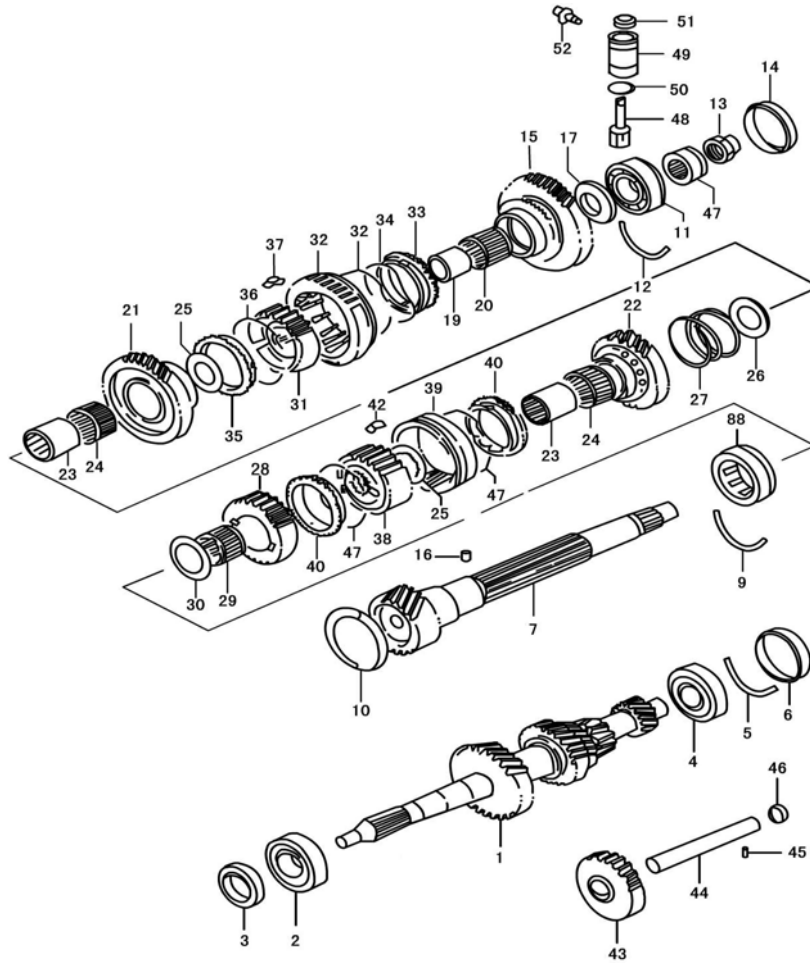
| No. | Code name | Description | Qty |
|-----|-------------------|---------------------------|-----|
| 1 | QST160HH14 | Clutch pressure plate | 1 |
| 2 | LJ462Q—1—1005024D | Clutch cover bolt | 2 |
| 3 | GB/T9074.15—1988 | Bolt tab M8×16 | 4 |
| 4 | GB859—87 | Light gage spring washer8 | 6 |
| 5 | DST160A71 | Clutch plate | 1 |
| 6 | 1701510 | Clutch release bearing | 1 |
| 7 | 1701501 | Release bearing carrier | 1 |
| 8 | 1701022 | Circlip | 2 |
| 9 | 1701040 | Clutch fork | 1 |
| 10 | 1701019 | Bushing ring | 2 |
| 11 | 1701018 | Tension spring | 1 |
| 12 | 1701016 | Clutch action arm | 1 |
| 13 | GB5789—86 | Bolt AM8×35 | 1 |
| 14 | GB97.1—85 | Washer8 | 1 |
| 15 | GB6170—86 | Nut M8 | 1 |
| | | | |
| | | | |
| | | | |
| | | | |

16 DIFFERENTIAL



| No | Code name | Description | Qty |
|-----|------------|------------------------------------|-----|
| 1 | 2303017 | Differential Planet gear | 2 |
| 2 | 2303015 | Half axle of Differential | 2 |
| 3 | 2303019 | Planet gear shaft | 1 |
| 4 | GB309—84 | Needle bearing D5×25.8 | 1 |
| 5 | 2303018 | Planet gear washer | 2 |
| 6-1 | 2303012 | Half axle adjusting washer | 0~2 |
| 6-2 | 2303013 | Half axle adjusting washer | 0~2 |
| 6-3 | 2303014 | Half axle adjusting washer | 0~2 |
| 7 | 2303011 | Differential case | 1 |
| 8 | 2303021 | Main reduction gear | 1 |
| 9 | GB5789—86 | Bolt M10×1.25×20-10.9 | 8 |
| 10 | GB/T276—94 | Endocentric ball bearing 6207Z/P63 | 2 |
| 11 | 1701090 | Differential seal ring assembly | 2 |
| 12 | 1701014 | Thrust ring of Differential | 2 |
| 13 | 2303016 | Steel cable baffle ring | 2 |

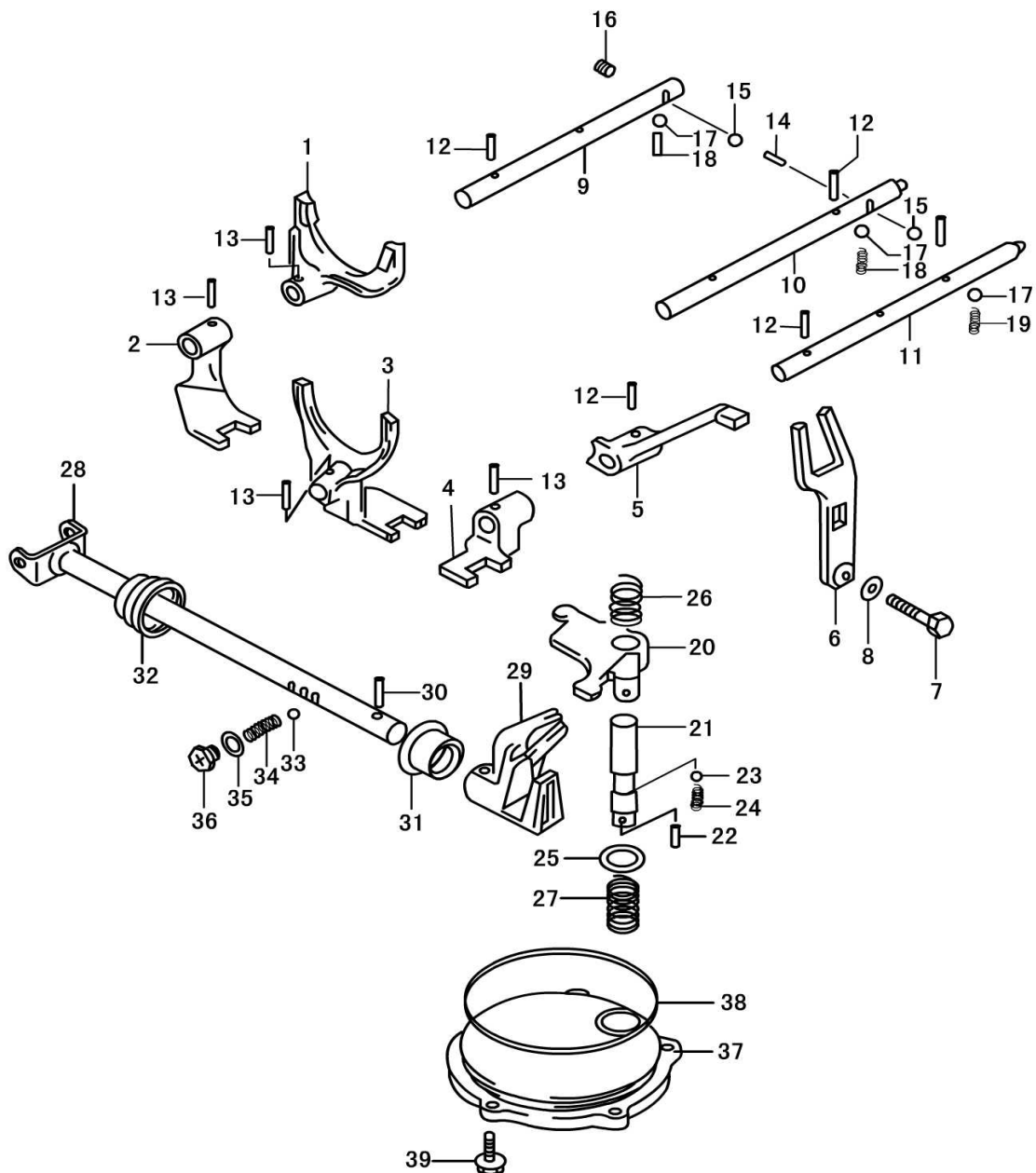
17 FIRST SHAFT AND COUNTERSHAFT (1)



| No. | Code name | Description | Qty |
|-----|------------|---|-----|
| 1 | 1701130 | The first shaft assembly | 1 |
| 2 | GB/T276—94 | Endocentric ball bearing 6204—2RS/P53 | 1 |
| 3 | 1701310 | The first shaft seal ring assembly | 1 |
| 4 | GB/T276—94 | Endocentric ball bearing 6204—2RS/P53 | 1 |
| 5 | 1701011 | Thrust ring of the first shaft bearing | 1 |
| 6 | 1701120 | The first shaft seal cap assembly | 1 |
| 7 | 1701201 | Countershaft | 1 |
| 8 | 1701250 | Cylindrical roller bearing with Locking | 1 |
| 9 | 1701013 | Thrust ring of countershaft bearing (right) | 1 |
| 10 | 1701060 | Sealing cap assembly of countershaft | 1 |
| 11 | GB/T276—94 | Endocentric ball bearing 6204—2RS/P53 | 1 |
| 12 | 1701012 | Thrust ring of countershaft bearing (left) | 1 |
| 13 | 1701219 | Tight nut of countershaft | 1 |
| 14 | 1701050 | Sealing cap assembly of Countershaft | 1 |
| 15 | 1701211 | The first gear of countershaft | 1 |
| 16 | GB309—84 | Needle P2×7.8 | 1 |
| 17 | 1701203 | The first gear gasket of countershaft | 1 |

| 17 FIRST SHAFT AND COUNTERSHAFT (2) | | | |
|-------------------------------------|-------------|---|-----|
| No. | Code name | Description | Qty |
| 18 | GB308—84 | Steel ball4.7625G60b | 1 |
| 19 | 1701204 | First gear bushing ring of countershaft | 1 |
| 20 | GB5846—86 | Needle bearing K253023 | 1 |
| 21 | 1701212 | The second gear of countershaft | 1 |
| 22 | 1701213 | The third gear of countershaft | 1 |
| 23 | 1701012 | The second and the third gears bushing | 2 |
| 24 | GB5846—86 | Needle bearing K303520 | 2 |
| 25 | 1701206 | The second and the third gears gasket | 2 |
| 26 | 1701208 | The third gear spacer | 1 |
| 27 | 1701207 | The second and the third gears pressure | 1 |
| 28 | 1701214 | Fourth gear of countershaft | 1 |
| 29 | GB5846—86 | Needle bearing K253020 | 1 |
| 30 | 1701209 | The fourth gear gasket | 1 |
| 31 | 1701232 | Low synchronizer shell | 1 |
| 32 | 1701231 | Low synchronizer sleeve | 1 |
| 33 | 1701215 | Low synchronizer ring (left) | 1 |
| 34 | 1701217 | Low synchronizer ring spring | 1 |
| 35 | 1701216 | Low synchronizer ring (right) | 1 |
| 36 | 1701233 | Low synchronizer spring | 2 |
| 37 | 1701234 | Synchronizer guide block | 3 |
| 38 | 1701242 | High synchronizer shell | 1 |
| 39 | 1701241 | High synchronizer sleeve | 1 |
| 40 | 1701218 | High synchronizer ring | 2 |
| 41 | 1701243 | High synchronizer spring | 2 |
| 42 | 1701234 | Synchronizer guide block | 3 |
| 43 | 1701080 | Racing gear of reverse gear | 1 |
| 44 | 1701015 | Reverse gear shaft | 1 |
| 45 | GB119—86 | Pin D5×13 | 1 |
| 46 | 1701070 | Sealing cap assembly of reverse gear | 1 |
| 47 | 1701202 | Speed gage worm | 1 |
| 48 | 1701209 | Speed gage worm wheel | 1 |
| 49 | 1701401 | Speed gage worm wheel bushing ring | 1 |
| 50 | GB3452.1—82 | “O” type seal ring | 1 |
| 51 | 1701410 | Seal ring assembly of Speed gage worm | 1 |
| 52 | 1701028 | Speed gage thrust bolt | 1 |
| | | | |
| | | | |
| | | | |

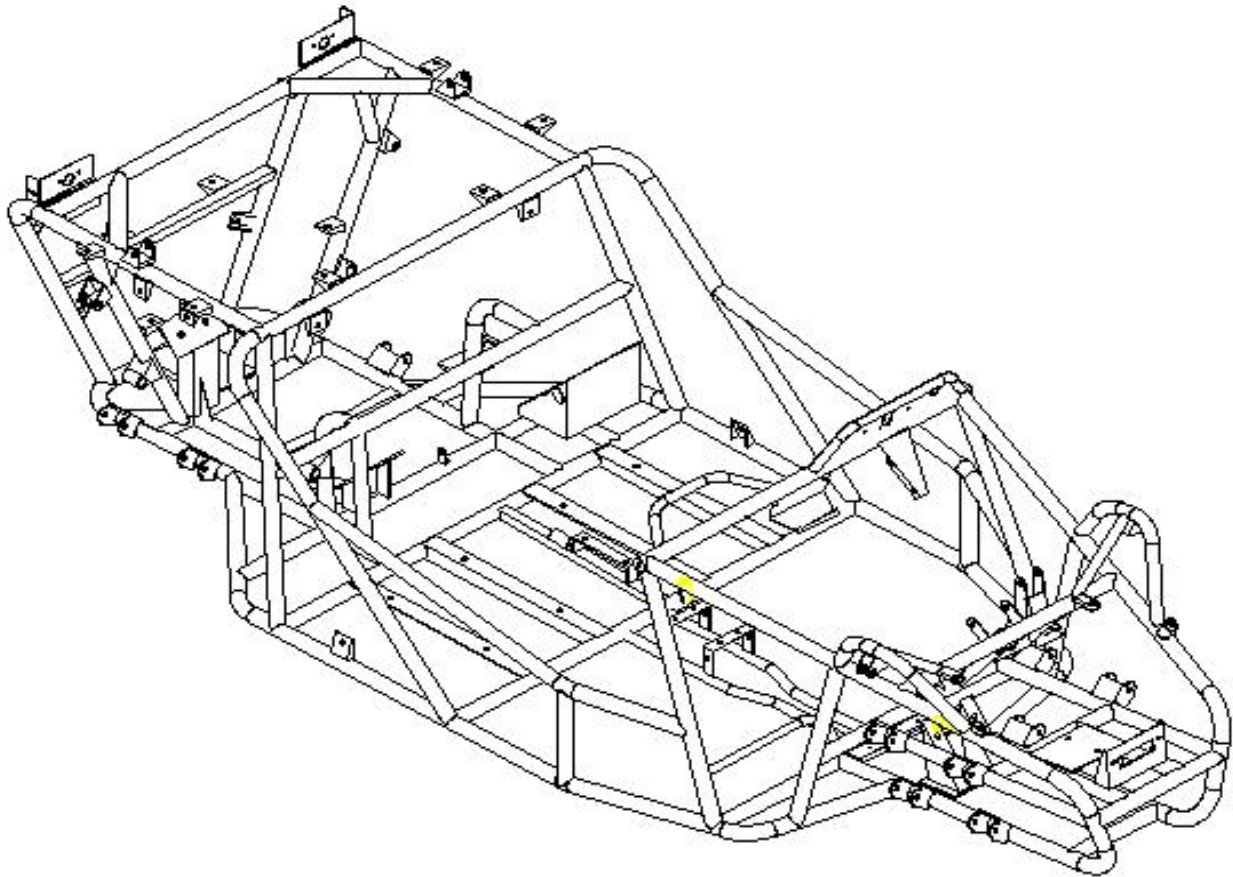
18 GEAR SHIFTED GEAR FORK (1)



| NO. | Code name | Description | Qty |
|-----|-----------|---|-----|
| 1 | 1702014 | Shift fork for the first gear | 1 |
| 2 | 1702017 | Shift fork for the first and the second gears | 1 |
| 3 | 1702015 | Shift fork for the third and the fourth gears | 1 |
| 4 | 1702012 | Reverse gear shift fork | 1 |
| 5 | 1702011 | Reverse gear shift cantilever | 1 |
| 6 | 1702060 | Shift fork assembly of reverse gear | 1 |
| 7 | GB5783—86 | Bolt M10×1.25×35 | 1 |
| 8 | 1702019 | Shift fork washer of reverse gear | 1 |
| 9 | 1702014 | Shift lever for first and the second gears | 1 |

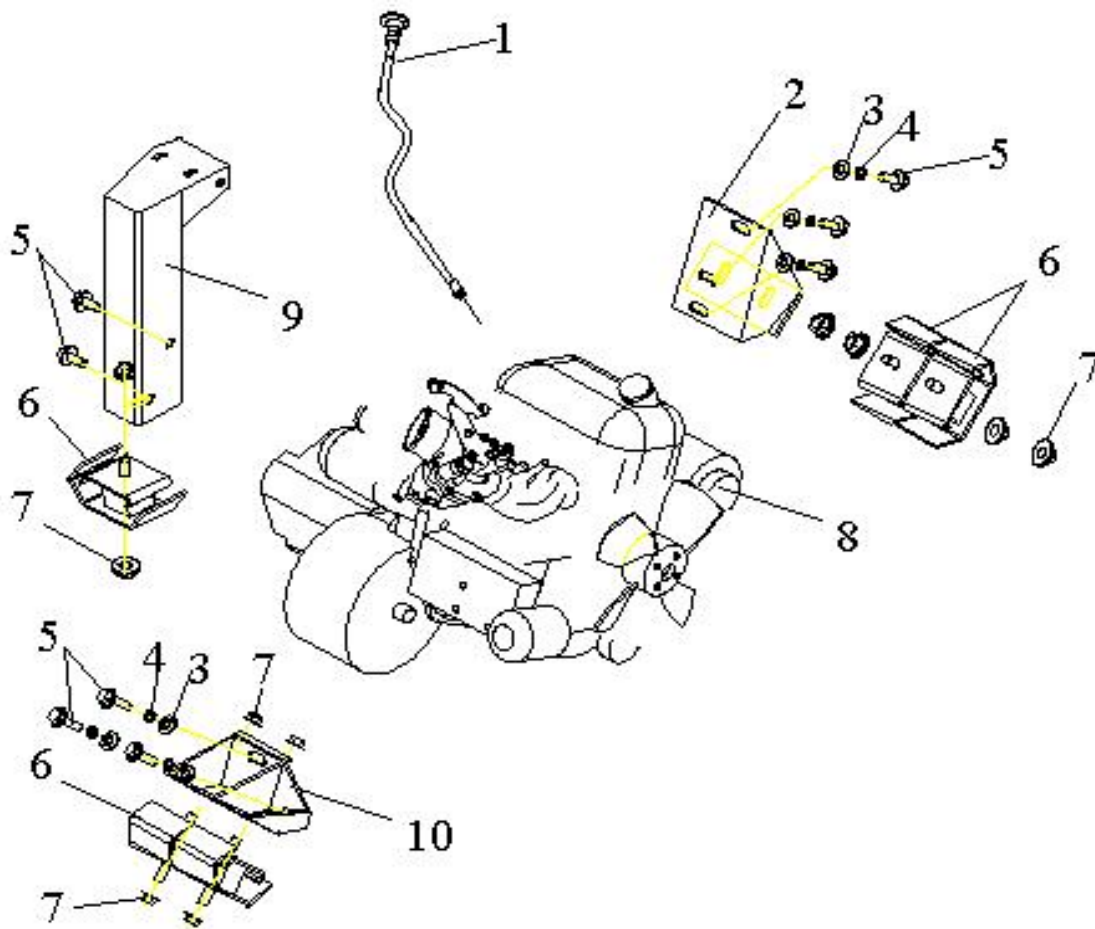
| 18 GEAR SHIFTED GEAR FORK (2) | | | |
|-------------------------------|-------------|---|-----|
| NO. | Code name | Description | Qty |
| 10 | 1702018 | Shift lever for third and the fourth gears | 1 |
| 11 | 1702016 | Reverse gear shift lever | 1 |
| 12 | GB879—86 | Pin 4.5×18 | 4 |
| 13 | GB879—86 | Pin 4.5×20 | 4 |
| 14 | GB309—84 | Needle 3×9.8 | 1 |
| 15 | GB308—84 | Steel ball 9.5250G60b | 2 |
| 16 | 1701021 | Hole plug | 1 |
| 17 | GB308—84 | Steel ball9.5250G60b | 3 |
| 18 | 1702021 | Locating spring of high and low speed shift level | 2 |
| 19 | 1702022 | Locating spring | 1 |
| 20 | 1702082 | Transposition Rocker arm | 1 |
| 21 | 1702081 | Transposition shaft | 1 |
| 22 | GB119—86 | Pin D4×8 | 1 |
| 23 | GB308—84 | Steel ball 7.9375G60b | 1 |
| 24 | 1702029 | Locating spring | 1 |
| 25 | 1702026 | Transposition shaft washer | 1 |
| 26 | 1702024 | Long spring of Transposition shaft | 1 |
| 27 | 1702025 | Short spring of Transposition shaft | 1 |
| 28 | 1702070 | Shift shaft assembly | 1 |
| 29 | 1702028 | Transposition shaft rocker | 1 |
| 30 | GB879—76 | Pin 5×22 | 1 |
| 31 | 1702040 | Seal ring assembly of shift shaft | 1 |
| 32 | 1702027 | Dirt guard of Shift shaft | 1 |
| 33 | GB308—84 | Steel ball 7.9375 G60b | 1 |
| 34 | 1702022 | Locating spring | 1 |
| 35 | 1702019 | Shifted gear shifting fork washer of reverse gear | 1 |
| 36 | ZBT31033—88 | Hollow-headed and cross recess bolt M10×1.25×9 | 1 |
| 37 | 1702023 | Transposition shaft cap | 1 |
| 38 | GB345.1—82 | “O” type seal ring 95×2.65 | 1 |
| 39 | GB789—86 | Bolt AM6×20 | 1 |
| | | | |
| | | | |
| | | | |
| | | | |

1 FRAME



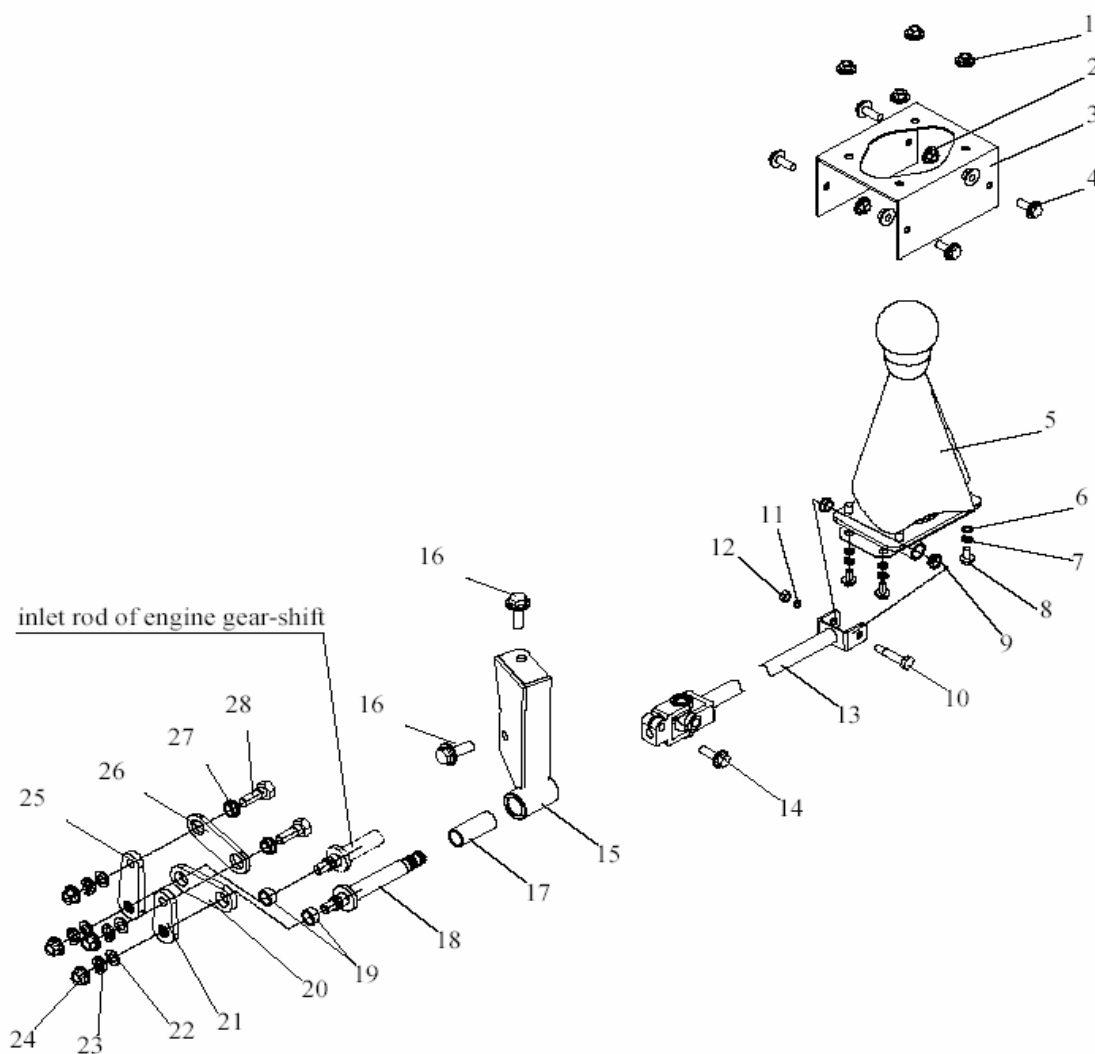
| NO. | Code name | Description | Qty |
|-----|------------------|-----------------|-----|
| 1 | D650.01.01.00.00 | frame component | 1 |

2 ENGINE MOUNT ASSY



| NO. | Code name | Description | Qty |
|-----|------------------|---------------------------------|-----|
| 1 | D650.04.01.05.00 | choke cable | 1 |
| 2 | D650.04.01.02.00 | engine mount ,front | 1 |
| 3 | GB/T95 | flat washer $\phi 10$ (11*20*2) | 10 |
| 4 | GB/T 93-1987 | spring washer $\phi 10$ | 10 |
| 5 | GB/T5787-1986 | bolt-washer M10*1.25*20 | 8 |
| 6 | D650.04.01.00.01 | engine rubber bumper | 5 |
| 7 | GB6177.1-2000 | bolt-washer M10*1.25 | 1 |
| 8 | D650.04.01.01.00 | engine(LJ276M) | 1 |
| 9 | D650.04.01.03.00 | engine mount ,left | 1 |
| 10 | D650.04.01.04.00 | engine mount ,rear | 1 |
| | | | |
| | | | |

3 GEAR-SHIFT MECHANISM (1)

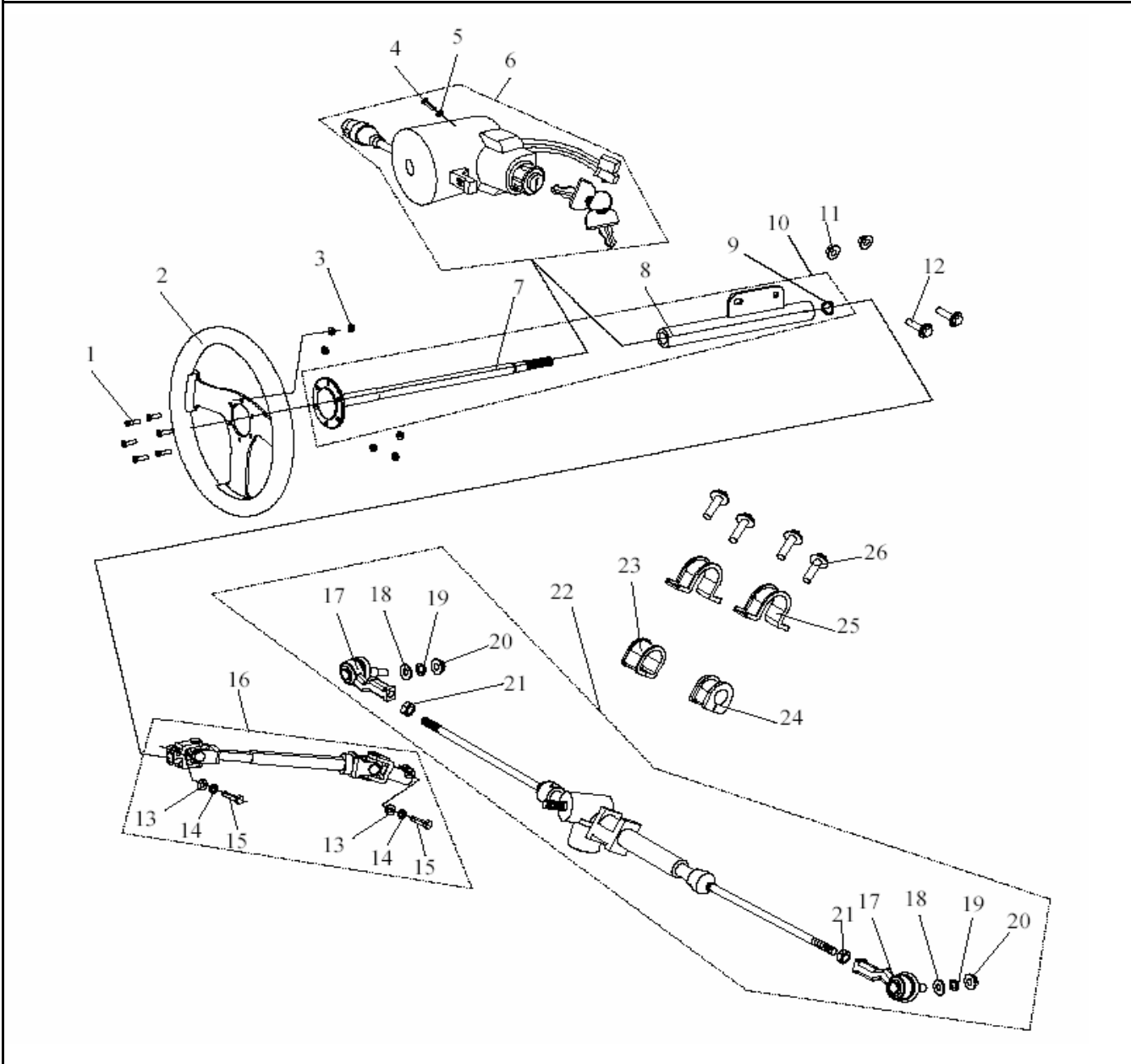


| NO. | Code name | Description | Qty |
|-----|------------------|--------------------------------|-----|
| 1 | GB/T6177.1-2000 | nut-lock M8 | 4 |
| 2 | GB/T6177.1-2000 | nut-lock M8 | 4 |
| 3 | D650.05.02.02.03 | shifter mount | 1 |
| 4 | GB/T5787-86 | bolt-washer M8*20 | 4 |
| 5 | D650.05.02.02.04 | shifter assy | 1 |
| 6 | GB/T95 standard | washer Ø6(Ø6.6*Ø12*1.6) | 4 |
| 7 | GB/T 93-1987 | spring mattress Ø6 | 4 |
| 8 | GB/T5787-86 | bolt-washer M6*15 | 4 |
| 9 | D650.05.02.02.02 | bush,shift gear handgrip | 2 |
| 10 | D650.05.02.02.01 | screw axle,shift gear handgrip | 1 |
| 11 | GB/T 93-1987 | spring mattress Ø6 | 1 |
| 12 | GB/T 6170-2000 | nut M6 (m=5.2) | 1 |

3 GEAR-SHIFT MECHANISM (2)

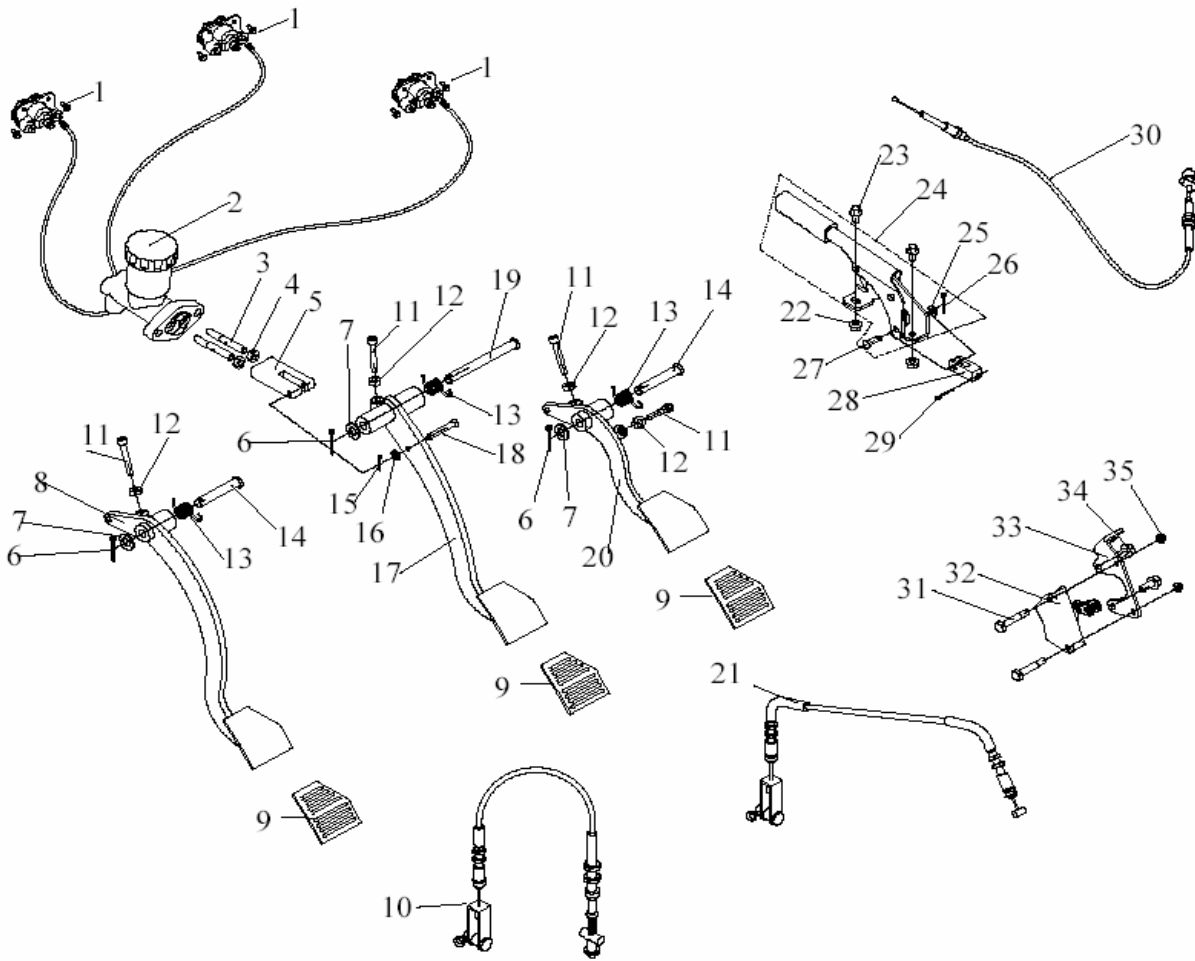
[illegible]

4 STEERING ASSY (1)



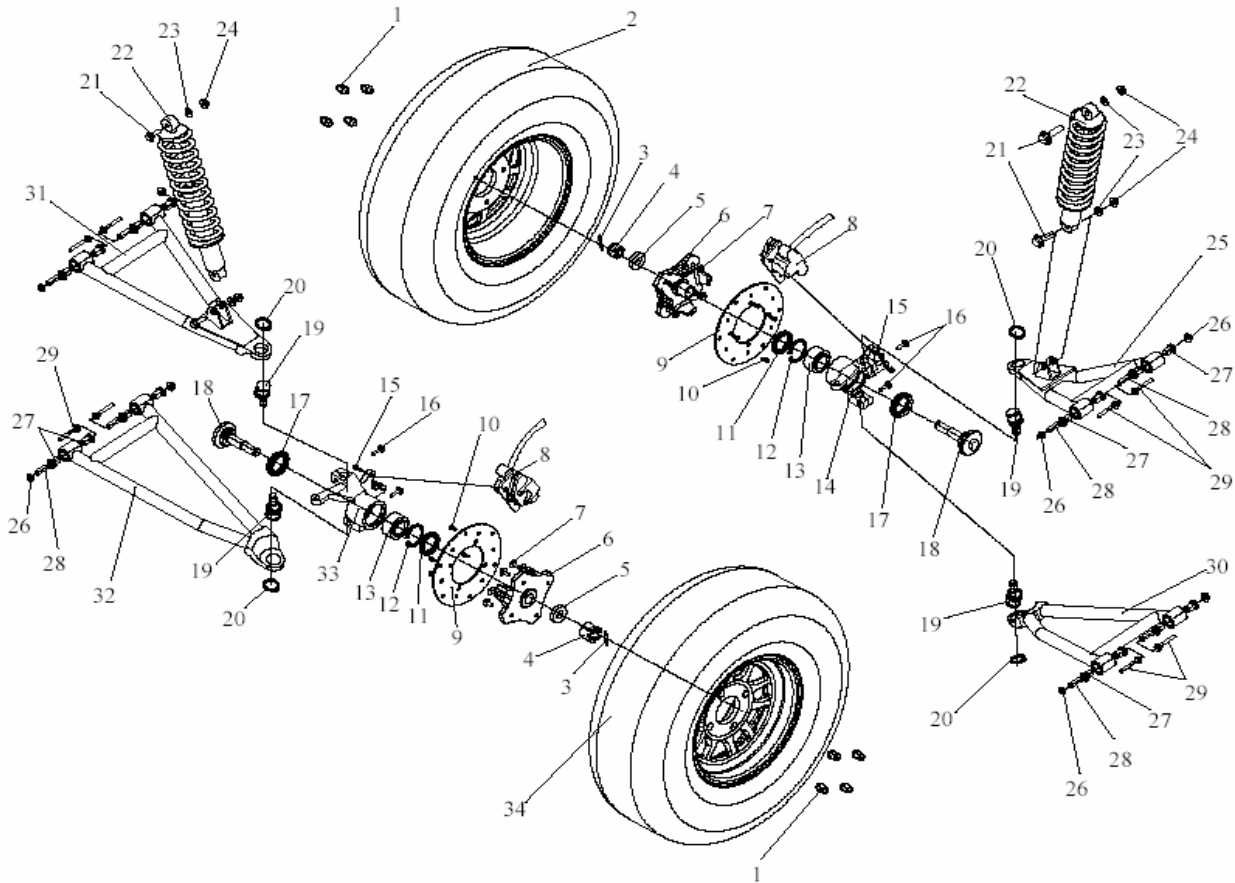
| NO. | Code name | Description | Qty |
|-----|------------------|-------------------------|-----|
| 1 | GB/T818-2000 | bolt cross M6*20 | 6 |
| 2 | D650.05.01.00.01 | steering wheel | 1 |
| 3 | GB6177.1-2000 | nut flange lock M6 | 6 |
| 4 | GB/T819.1-2000 | bolt M6*10 | 1 |
| 5 | GB/T 93-1987 | spring washer Ø6 | 1 |
| 6 | D650.06.00.08.00 | integrated switch assy | 1 |
| 7 | D650.05.01.01.01 | steering wheel shaft | 1 |
| 8 | D650.05.01.01.02 | steering column housing | 1 |
| 9 | GB/T894.1-1986 | circlip Ø15, external | 1 |
| 10 | D650.05.01.01.00 | steering column assy | 1 |

5 PARK BRAKE (1)



| NO. | Code name | Description | Qty |
|-----|------------------|----------------------------|-----|
| 1 | GB/T5787-86 | bolt-washer M8*20 | 6 |
| 2 | D650.07.01.01.00 | brake calliper assy | 1 |
| 3 | D650.07.01.00.04 | master cylinder rod | 2 |
| 4 | GB/T6172.1-2000 | nut M8(m=6.8) | 2 |
| 5 | D650.07.01.00.03 | master cylinder rod block | 1 |
| 6 | GB/T91-2000 | cotter pin 3.2*30 | 3 |
| 7 | GB/T95standard | washer Ø10(Ø10.5*Ø18*Ø1.6) | 3 |
| 8 | D650.07.04.02.00 | clutch pedal | 1 |
| 9 | D650.07.01.00.05 | pedal rubber cover | 3 |
| 10 | D650.07.04.01.00 | cable,clutch | 1 |
| 11 | GB/T70.1-2000 | bolt,hex M6*55 | 4 |
| 12 | GB/T 6170-2000 | nut M6 (m=5.2) | 4 |
| 13 | D250.10.003 | spring | 3 |
| 14 | D650.07.03.00.01 | short pivot pin.10*60 | 2 |
| 15 | GB/T91-2000 | cotter pin 2*25 | 1 |

6 FRONT HOUSING (1)

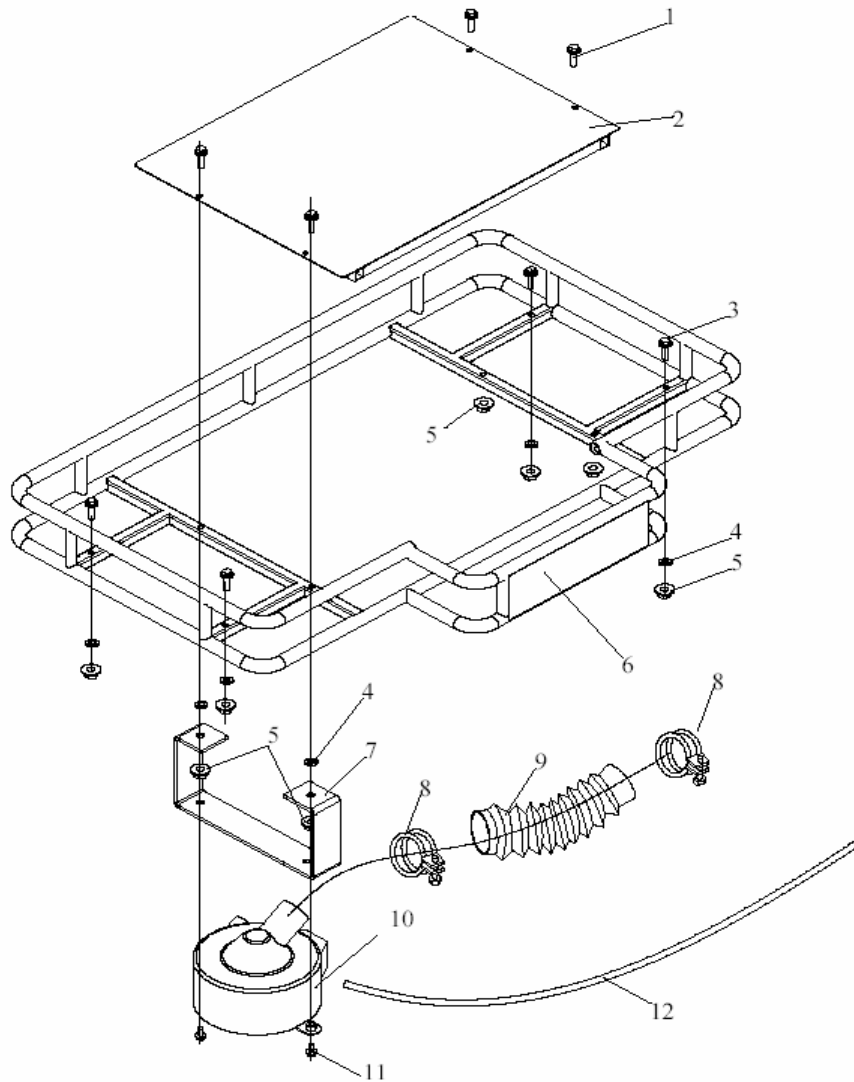


| NO. | Code name | Description | Qty |
|-----|------------------|--------------------------------|-----|
| 1 | D650.03.02.00.02 | wheel nut M10*1.25 | 8 |
| 2 | D650.03.01.01.00 | wheel(25*8-12),FL | 1 |
| 3 | GB/T 91-2000 | cotter pin 4*40 | 2 |
| 4 | GB/T9457-1988 | nut-castle M18*1.5,front axle | 2 |
| 5 | D650.03.01.00.08 | washer,front axle | 2 |
| 6 | D650.03.01.00.01 | front hub | 2 |
| 7 | D650.03.02.00.03 | bolt M10*1.25,hub | 8 |
| 8 | D650.07.01.01.00 | brake calliper assy | 1 |
| 9 | D650.03.02.00.05 | brake disc | 2 |
| 10 | D650.03.02.00.08 | bolt M6,brake disc | 8 |
| 11 | D650.03.01.00.04 | seal (40X55X6) | 2 |
| 12 | GB/T893.2-1986 | circlipφ55,internal | 2 |
| 13 | D650.03.01.00.05 | bearing(30X55X30X25),front hub | 2 |
| 14 | D650.03.01.00.07 | stub axle,L | 1 |
| 15 | GB/T5787-1986 | bolt-washer M8*20 | 4 |
| 16 | GB/T5787-1986 | bolt-washer M10*1.5*30*20 | 4 |

6 FRONT HOUSING (2)

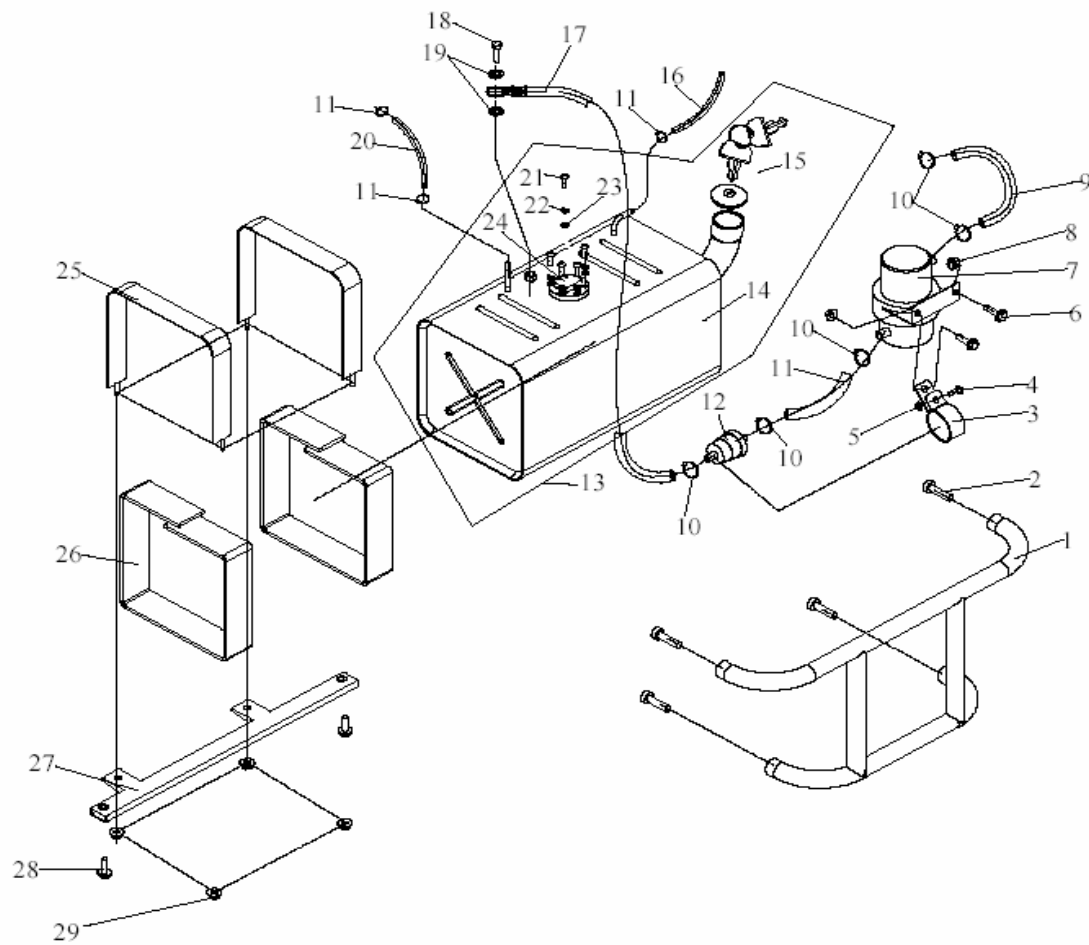
[illegible]

7 REAR CARGO RACK AND AIR FILTER ASSY



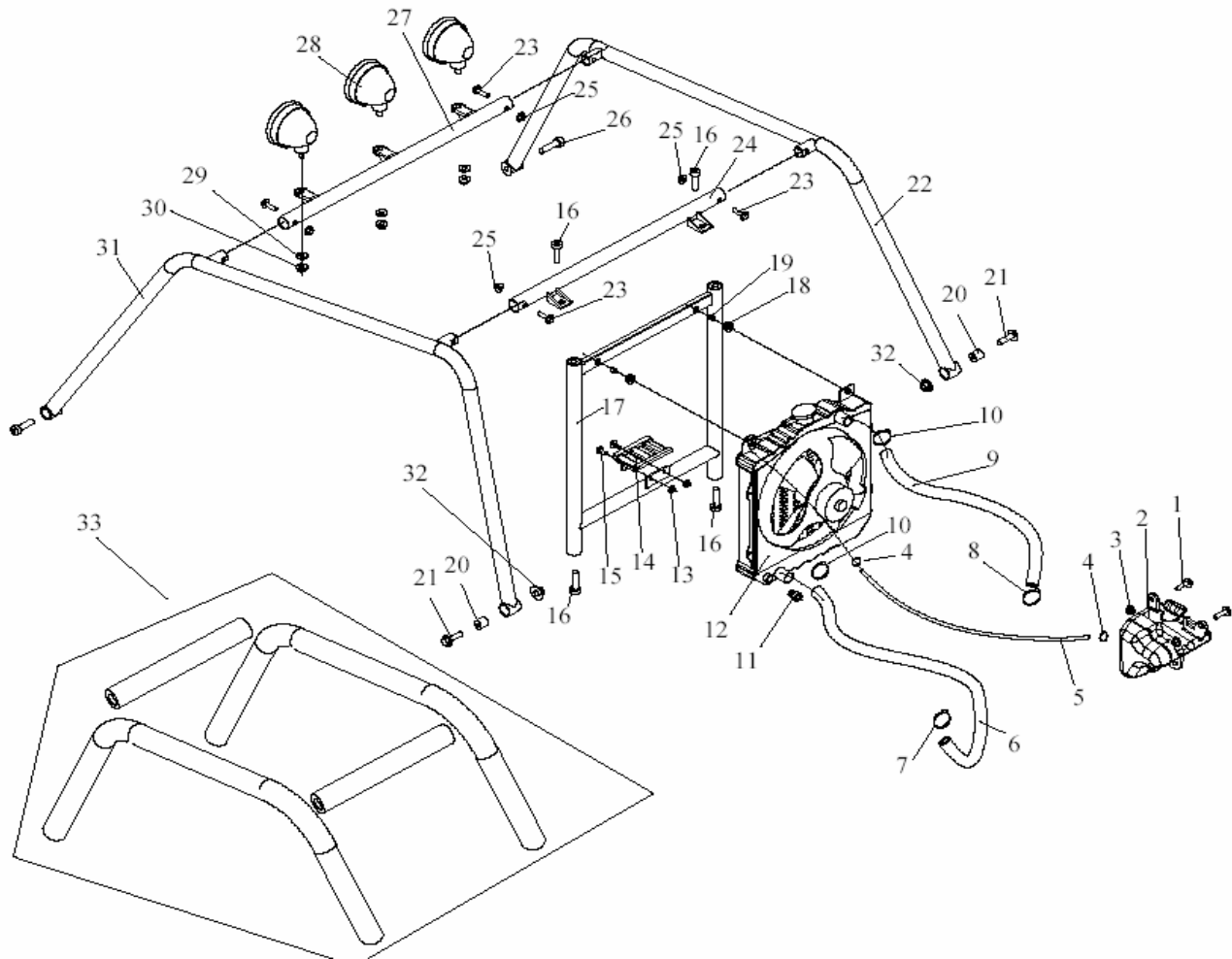
| NO. | Code name | Description | Qty |
|-----|------------------|----------------------------|-----|
| 1 | GB/T5787-1986 | bolt-washer M8*35 | 4 |
| 2 | D650.08.01.02.00 | cover, rear rack | 1 |
| 3 | GB/T5787-1986 | bolt-washer M8*40 | 4 |
| 4 | D650.04.05.00.04 | thick rubber washer | 6 |
| 5 | GB6177.1-2000 | bolt-washer M8 | 8 |
| 6 | D650.08.01.01.00 | rear rack | 1 |
| 7 | D650.04.05.00.05 | air cleaner bracket | 1 |
| 8 | D650.04.05.00.02 | flexible hose clamp | 2 |
| 9 | D650.04.05.00.01 | flexible hose | 1 |
| 10 | D650.04.05.01.00 | air cleaner assy | 1 |
| 11 | D650.07.01.00.02 | bolt-washer M8*16 | 2 |
| 12 | D650.04.05.00.03 | tube , recycle exhaust gas | 1 |

8 FUEL TANK AND GASOLINE PUMP (1)



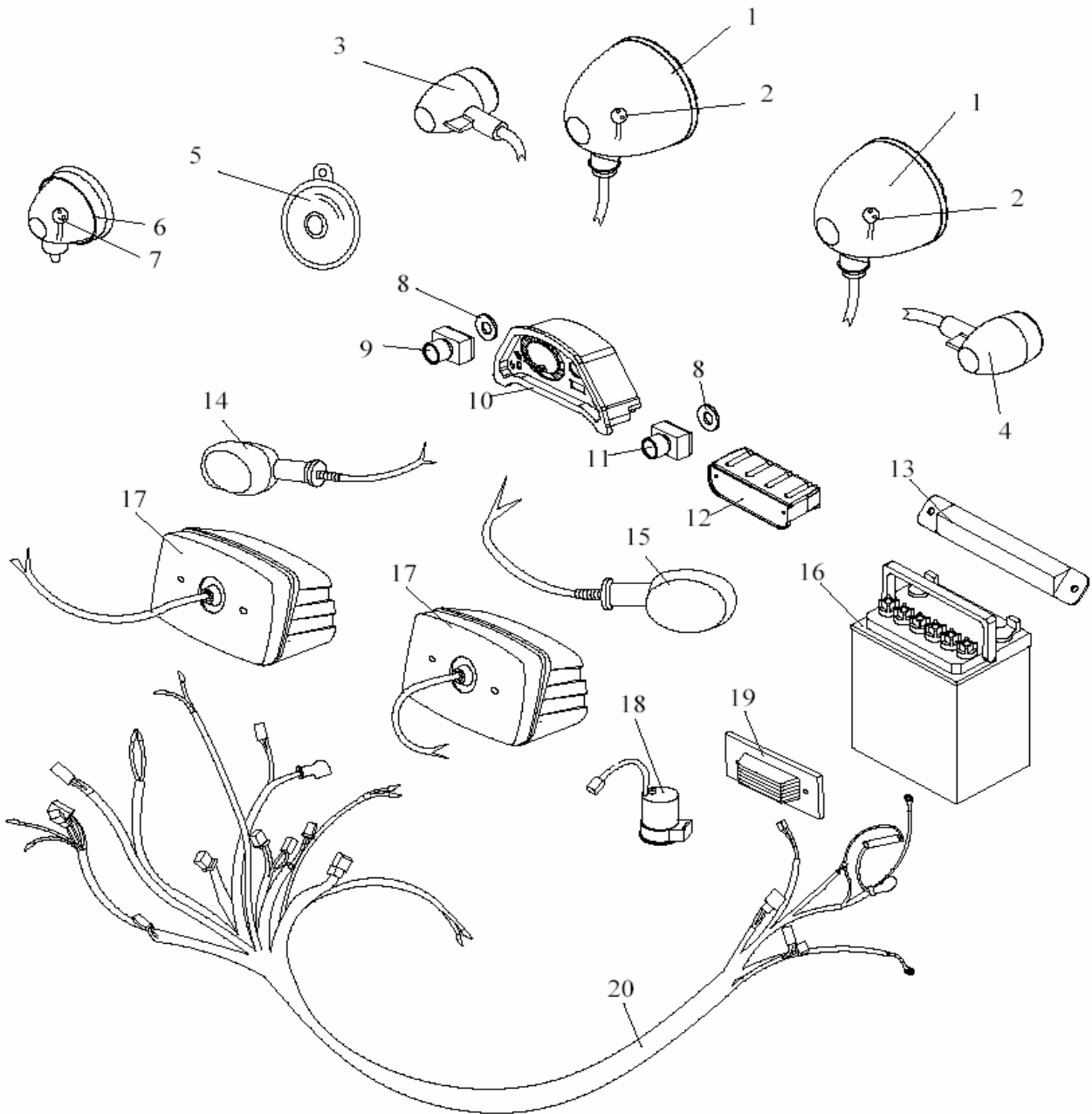
| NO. | Code name | Description | Qty |
|-----|------------------|--------------------------------|-----|
| 1 | D650.01.02.06.00 | rear bumper bar | 1 |
| 2 | GB/T70.1-2000 | bolt-hexagon M12*1.5*30 | 4 |
| 3 | D650.04.03.00.10 | clamp fuel filter | 1 |
| 4 | GB/T5787-1986 | bolt-washer M8*25 | 1 |
| 5 | GB/T6177.1-2000 | nut-washer M8 | 1 |
| 6 | GB/T5787-1986 | bolt-washer M8*25 | 2 |
| 7 | D650.04.03.02.00 | gasoline pump | 1 |
| 8 | GB/T6177.1-2000 | nut-washer M8 | 2 |
| 9 | D650.04.03.00.07 | outlet tube(550),gasoline pump | 1 |
| 10 | D650.04.03.00.04 | hose clamp | 8 |
| 11 | D650.04.03.00.11 | inlet tube(450),gasoline pump | 1 |
| 12 | D650.04.03.00.05 | fuel filter | 1 |
| 13 | D650.04.03.01.00 | fuel tank assy | 1 |

9 ROLL BAR AND RADIATOR ASSY (1)



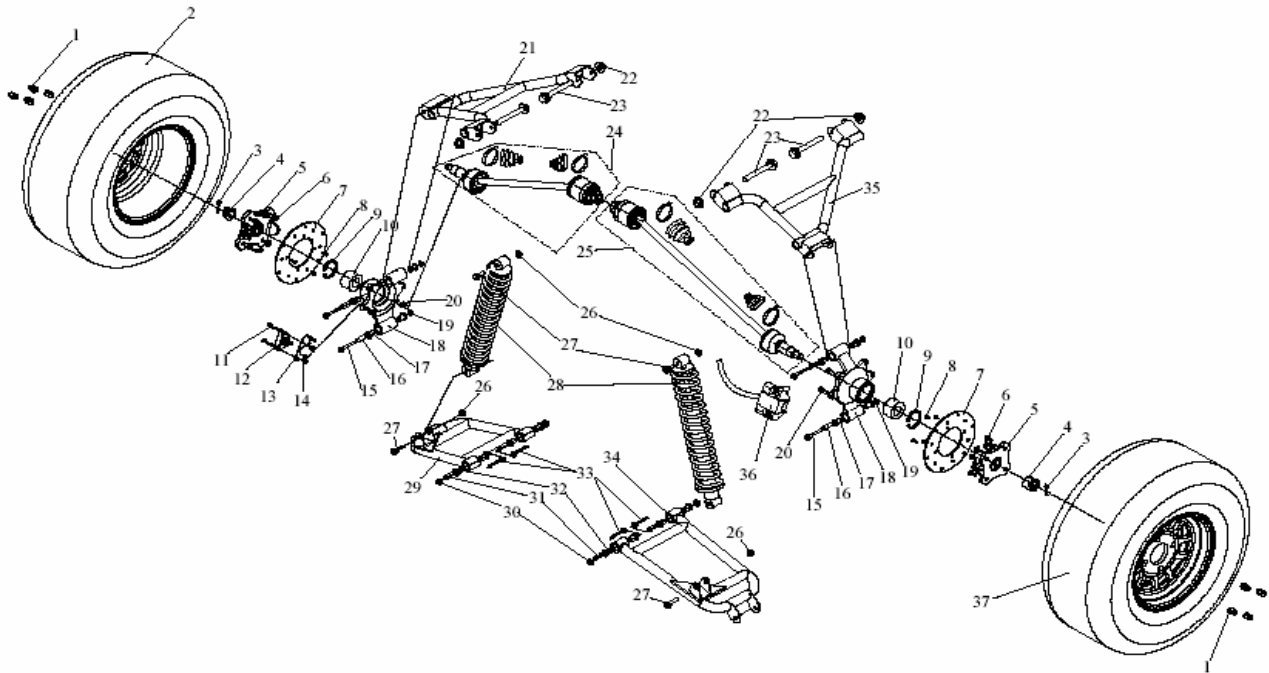
| NO. | Code name | Description | Qty |
|-----|------------------|--------------------------|-----|
| 1 | GB/T5787-1986 | bolt-washer M8*20 | 2 |
| 2 | D25009903 | overflow bottle | 1 |
| 3 | GB/T6177.1-2000 | nut-flange lock M8 | 2 |
| 4 | D650.04.03.00.04 | hoop (10-16) | 2 |
| 5 | D650.04.02.00.04 | overflow bottle hose | 1 |
| 6 | D650.04.02.00.01 | water outlet hose,engine | 1 |
| 7 | D650.04.02.00.03 | hoop (25-38) ,water tube | 1 |
| 8 | D650.04.02.00.03 | hoop (25-38) ,water tube | 1 |
| 9 | D650.04.02.00.02 | water inlet hose,engine | 1 |
| 10 | D650.04.02.00.03 | hoop (25-38) ,water tube | 2 |
| 11 | D650.04.02.03.00 | water temperature switch | 1 |
| 12 | D650.04.02.01.00 | radiator assy | 1 |
| 13 | GB/T6177.1-2000 | nut-flange lock M6 | 2 |
| 14 | D650.04.02.02.00 | radiator lower mount | 1 |
| 15 | GB/T5787-86 | bolt washer M6*15 | 2 |

10 ELECTRICAL APPLIANCE (1)



| NO. | Code name | Description | Qty |
|-----|------------------|----------------------------|-----|
| 1 | D650.06.00.03.00 | headlight | 2 |
| 2 | D650.06.00.03.01 | bulb of headlight(35W/35W) | 2 |
| 3 | D650.06.00.05.00 | turning signal,front,left | 1 |
| 4 | D650.06.00.15.00 | turning signal,front,right | 1 |
| 5 | D650.06.00.09.00 | horn | 1 |
| 6 | D650.06.00.12.00 | spot light | 3 |
| 7 | D650.06.00.12.01 | bulb of shooting light | 3 |
| 8 | JD0460003 | washer | 2 |
| 9 | D650.06.00.14.00 | spot light switch | 1 |

11 REAR HOUSING (1)

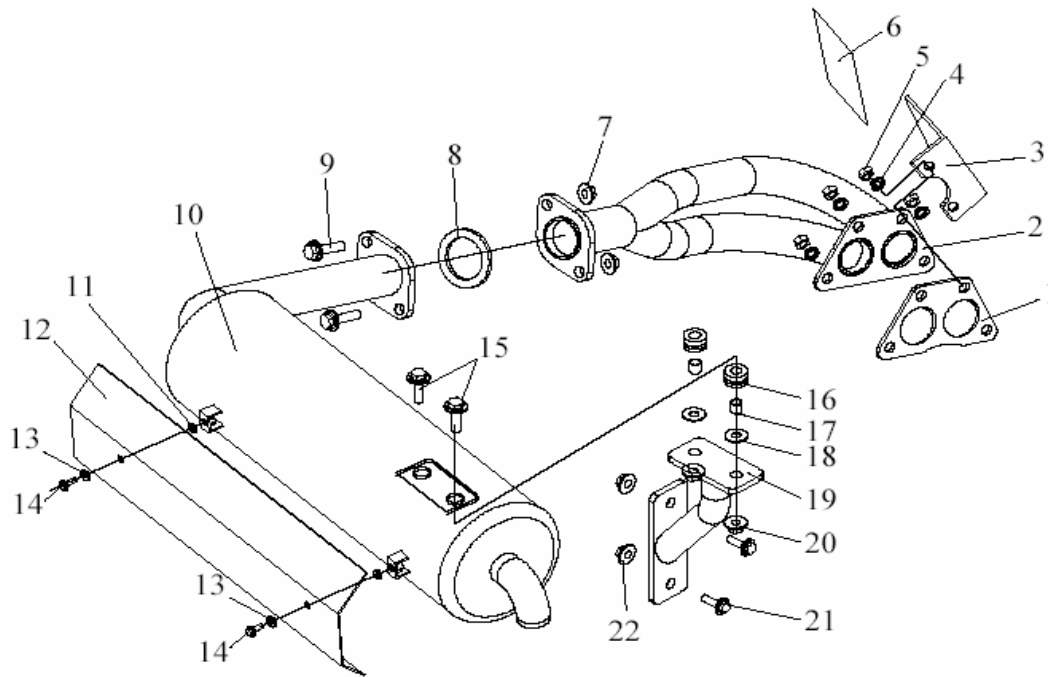


| NO. | Code name | Description | Qty |
|-----|------------------|-------------------------------|-----|
| 1 | D650.03.02.00.02 | wheel nut M10*1.25 | 8 |
| 2 | D650.03.02.01.00 | wheel(25X10-12),BL | 1 |
| 3 | GB/T91-2000 | cotter pin 4*40 | 2 |
| 4 | D650.03.02.00.06 | nut-castle M22*1.5,rear shaft | 2 |
| 5 | D650.03.02.00.04 | rear hub | 2 |
| 6 | D650.03.02.00.03 | bolt M10*1.25,hub | 16 |
| 7 | D650.03.02.00.05 | brake disc | 2 |
| 8 | D650.03.02.00.08 | bolt M6,brake disc | 8 |
| 9 | GB/T893.2-86 | circlipØ55,internal | 2 |
| 10 | D650.03.02.00.07 | bearing(Ø30XØ55X32),rear hub | 2 |
| 11 | D650.07.02.00.02 | parking brake pin | 2 |
| 12 | D650.07.02.03.00 | calliper,parking brake | 1 |
| 13 | D650.07.02.00.03 | cable mounting,parking brake | 1 |
| 14 | GB/T6177.1-2000 | nut-flange lock M8 | 2 |
| 15 | GB/T5787-86 | bolt-washer M10*1.25*100*20 | 4 |
| 16 | D650.02.02.00.02 | spacer,shaft carrier | 4 |
| 17 | D650.02.02.00.01 | bush,shaft carrier | 8 |
| 18 | D650.03.02.00.01 | shaft carrier | 2 |
| 19 | GB/T6177.1-2000 | bolt-washer M10*1.25 | 4 |
| 20 | GB/T5787-86 | bolt-washer M8*20 | 4 |

11 REAR HOUSING (2)

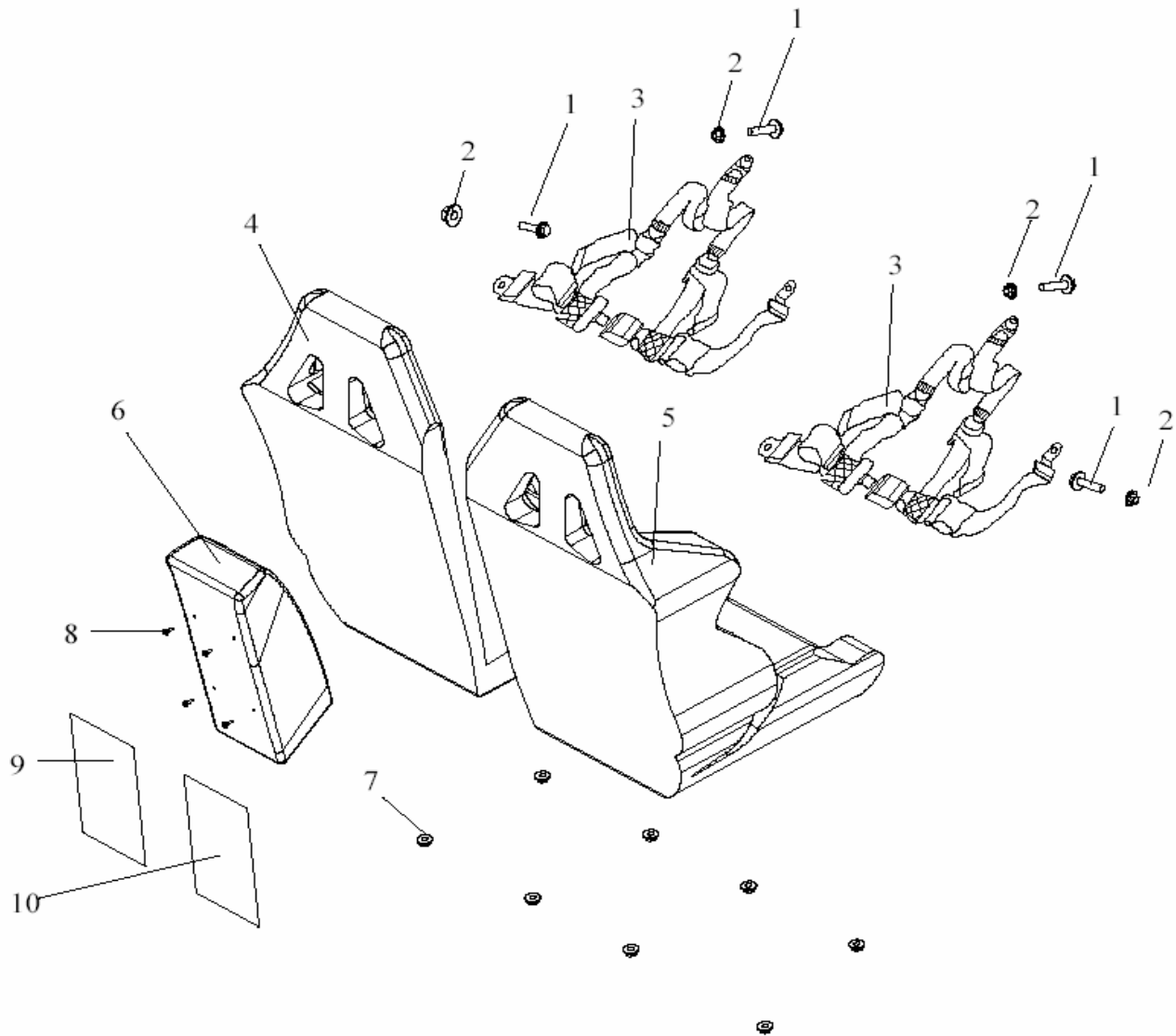
[illegible]

12 MUFFLER



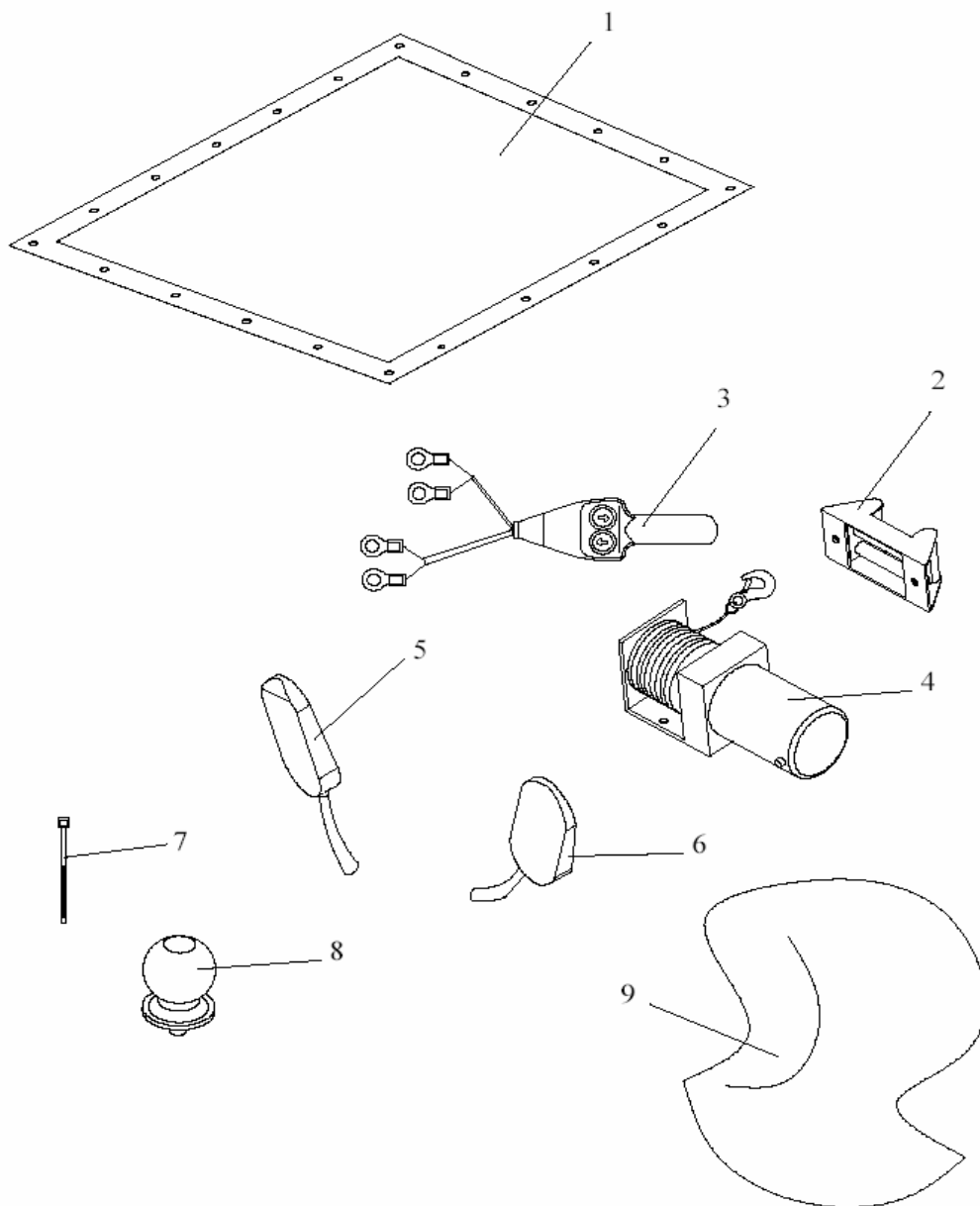
| NO. | Code name | Description | Qty |
|-----|------------------|--|-----|
| 1 | 270Q—06006 | exhaust gasket to head | 1 |
| 2 | D650.04.04.02.00 | front exhaust pipe | 1 |
| 3 | D650.04.04.00.03 | front pipe shield | 1 |
| 4 | GB/T 93-1987 | spring washer $\phi 8$ | 4 |
| 5 | GB/T6172.1-2000 | nut M8(m=6.8) | 4 |
| 6 | D650.04.04.00.04 | sheet of heat insulation (65*65) | 1 |
| 7 | GB6177.1-2000 | nut self-lock M8 | 2 |
| 8 | D650.04.04.00.01 | carbon bush | 1 |
| 9 | GB/T5787-1986 | bolt washer M8*30 | 2 |
| 10 | D650.04.04.01.00 | muffler | 1 |
| 11 | D650.04.04.00.05 | asbestos washer | 2 |
| 12 | D650.04.04.00.02 | heat insulation guard ,exhaust pipe | 1 |
| 13 | D650.04.04.00.06 | lock washer | 2 |
| 14 | GB/T5787-1986 | bolt washer M6*12 | 2 |
| 15 | GB/T5787-1986 | bolt washer M8*30 | 2 |
| 16 | GB/T6172.1-2000 | rubber cover,muffler | 2 |
| 17 | JD1910002A | spacer | 2 |
| 18 | GB/T96 big | washer $\phi 8$ ($\phi 8.4*\phi 24*2$) | 2 |
| 19 | D650.04.04.03.00 | muffler bracket | 1 |
| 20 | GB6177.1-2000 | self-lock M8 | 2 |
| 21 | GB/T5787-1986 | bolt washer M10*1.25*25 | 2 |
| 22 | GB6177.1-2000 | nut washer M10*1.25 | 2 |

13 SEAT AND SAFETY GELT



| NO. | Code name | Description | Qty |
|-----|------------------|------------------------------|-----|
| 1 | GB/T5787-86 | bolt washer M8*20 | 4 |
| 2 | GB/T6177.1-2000 | nut washer M8 | 4 |
| 3 | D650.08.01.00.01 | seat belt | 1 |
| 4 | D650.08.01.03.00 | left seat | 1 |
| 5 | D650.08.01.04.00 | right seat | 1 |
| 6 | D650.08.01.00.02 | center pad | 1 |
| 7 | GB/T6177.1-2000 | nut washer M8 | 8 |
| 8 | GB/T5787-86 | bolt washer M6*20 | 4 |
| 9 | D650.08.01.00.08 | sheet of heat insulation (1) | 1 |
| 10 | D650.08.01.00.09 | sheet of heat insulation (2) | 1 |

14 OTHERS PARTS



| NO. | Code name | Description | Qty |
|-----|------------------|------------------------------|-----|
| 1 | D650.08.01.00.05 | canvas roof | 1 |
| 2 | D650.08.01.06.00 | wire cable guide | 1 |
| 3 | D650.08.01.05.01 | switch assy,electrical winch | 1 |
| 4 | D650.08.01.05.00 | electrical winch | 1 |
| 5 | D650.08.01.00.06 | driving mirror ,left | 1 |
| 6 | D650.08.01.00.07 | driving mirror ,right | 1 |
| 7 | D650.08.05.00.06 | cable tie | 20 |
| 8 | GB/T5787-86 | tow ball ϕ 50 | 1 |
| 9 | D650.08.01.00.10 | cloth cover for entire kart | 1 |

