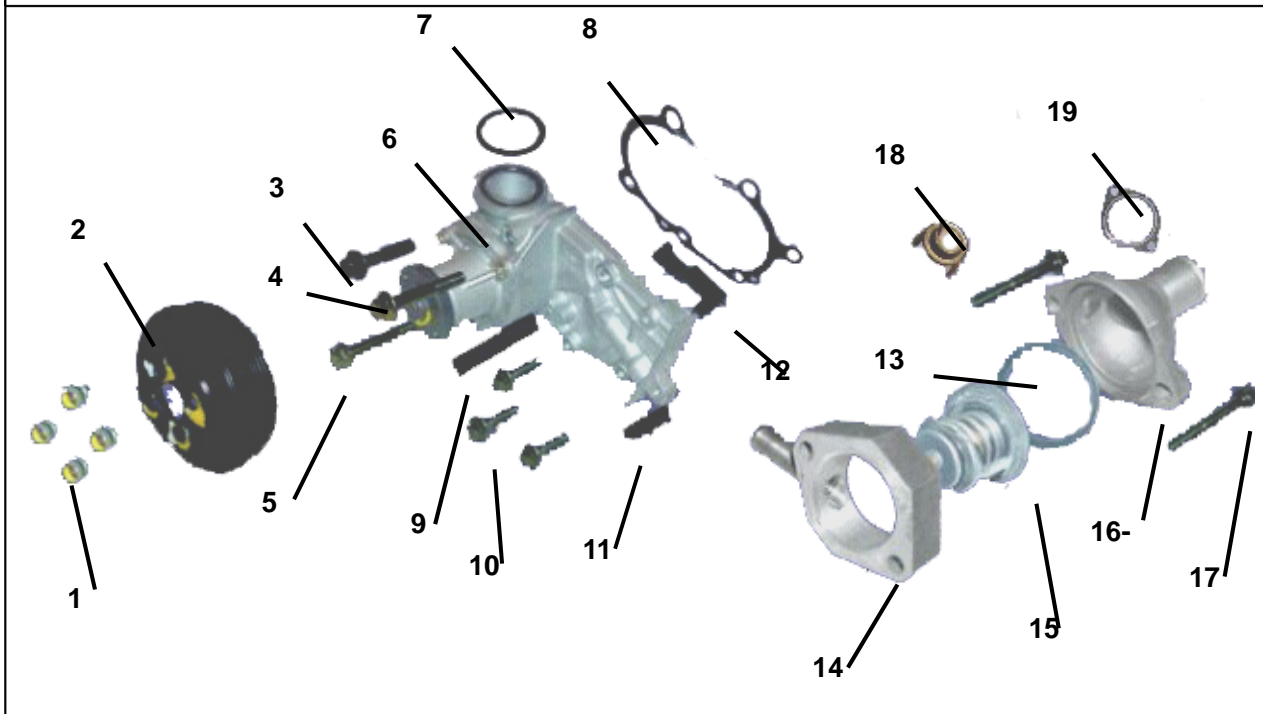


# 1.ENGINE

## 1.COOLING SYSTEM

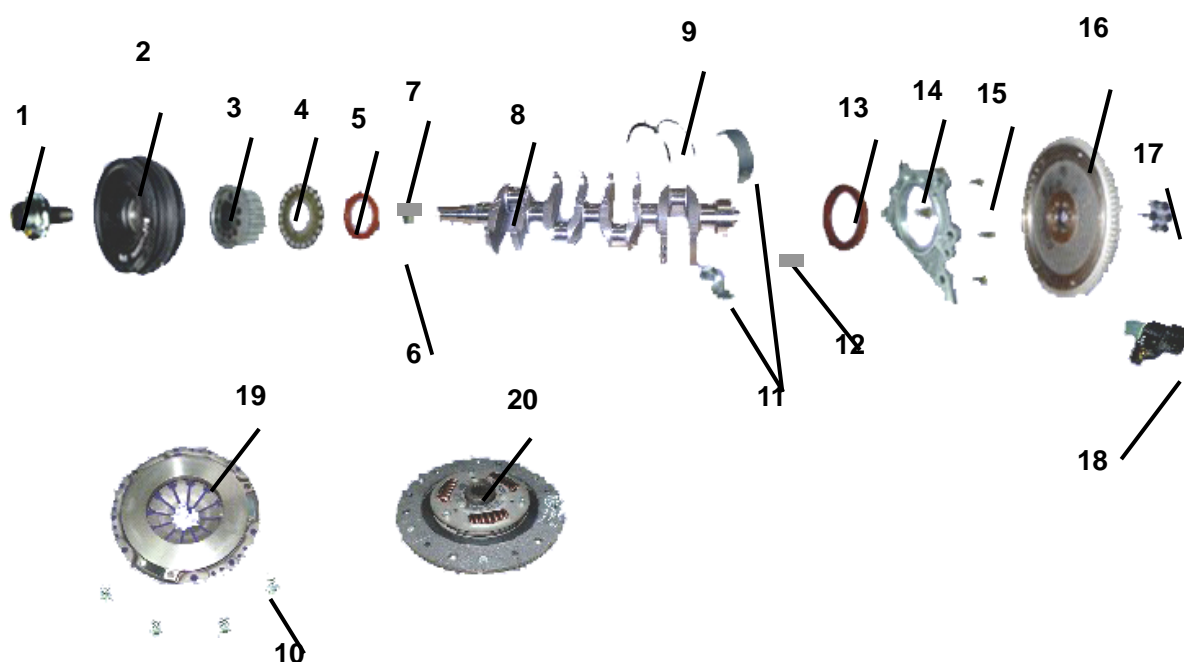


No	Erp code	Part number	Name	Quantity
1	02.DLJ.Q1400612	Q1400612	BOLT , HEXAGON HEAD	4
2	02.DLJ.372-1307014	372-1307014	WATER PUMP PULLEY	1
3	02.DLJ.Q1840840	Q1840840	BOLT , HEXAGON FLANGE	1
4	02.DLJ.Q1840855	Q1840855	BOLT ( M8X55 )	1
5	02.DLJ.Q1840865	Q1840865	BOLT , HEXAGON FLANGE	1
6	02.DLJ.372-1307010	372-1307010	PUMP SET , WATER	1
7	02.DLJ.372-1307015	372-1307015	RING , 'O'	1
8	02.DLJ.372-1307041	372-1307041	WATER PUMP WASHER	1
9	02.DLJ.372-1307018	372-1307018	SEAL STRIP 2	1
10	02.DLJ.Q1840825	Q1840825	BOLT	3
11	02.DLJ.372-1307019	372-1307019	SEAL STRIP 3	1
12	02.DLJ.372-1307012	372-1307012	SEAL STRIP 1	1
13	02.DLJ.GB50-18	GB50-18	RING,'O' RUBBER	1
14	02.DLJ.372-1306016	372-1306016	SEAT - THERMOSTAT OUTER	1
15	02.DLJ.372-1306020	372-1306020	THERMOSTAT ASSY	1
16	02.DLJ.372-1306001	372-1306001	SEAT - THERMOSTAT	1
17	02.DLJ.Q1840850	Q1840850	BOLT , HEXAGON FLANGE	2
18	02.DLJ.372-1306012	372-1306012	SEAT - THERMOSTAT	1



13	02.DLJ.372-1012021	372-1012021	CONNECTOR - OIL FLITER	1
14	02.DLJ.372-1014110BA	372-1014110BA	PIPE - CRANKCASE VENTILATION	1
15	02.DLJ.372-1014130BA	372-1014130BA	PIPE(3) - CRANKCASE VENTILATION	1

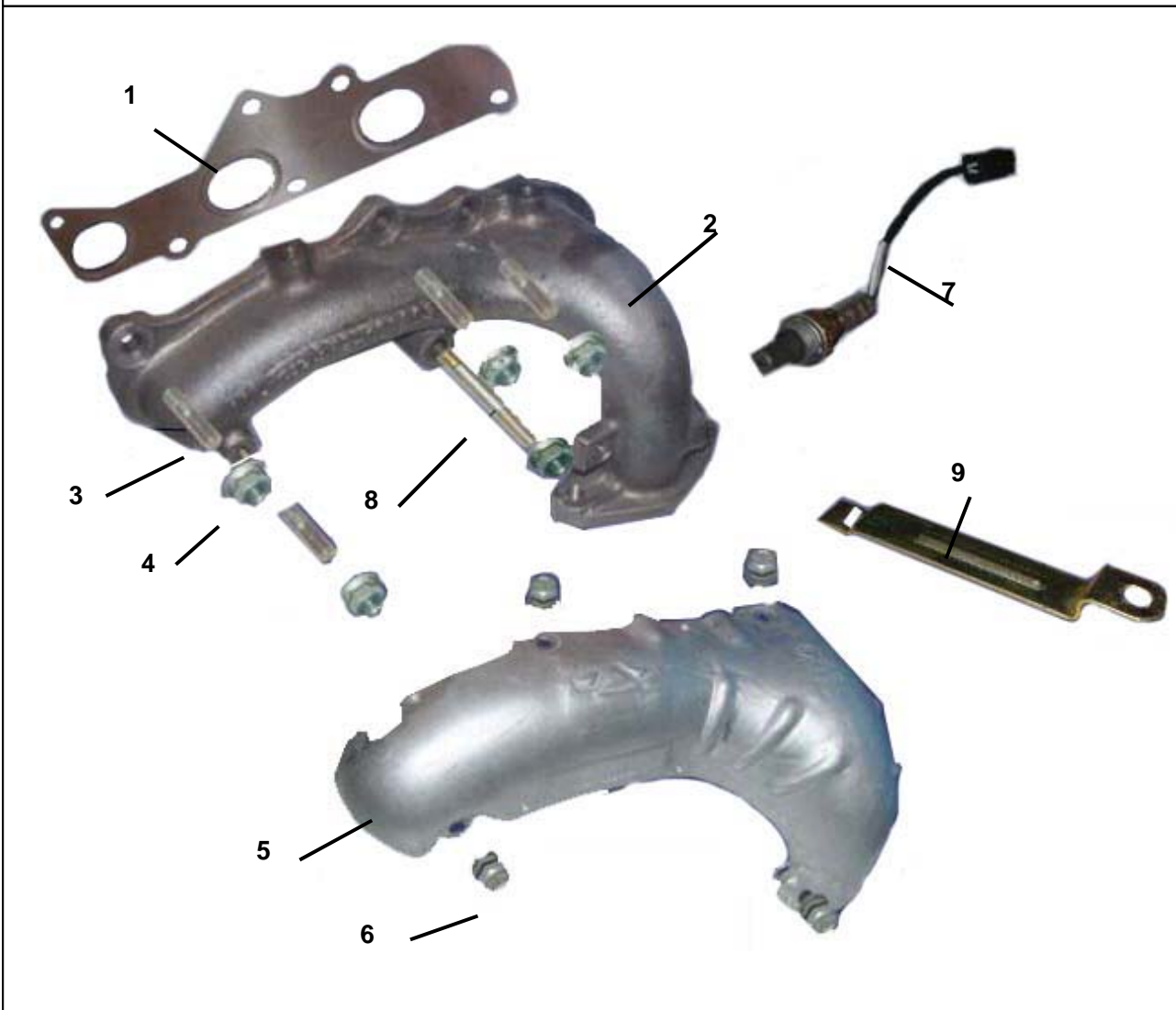
### 3.CRANKSHAFT



No	Erp code	Part number	Name	Quantity
1	02.DLJ.372-1005031	372-1005031	PULLEY BOLT	1
2	02.DLJ.372-1005040	372-1005040	TORSION SHOCK ABSORBER ASSY	1
3	02.DLJ.372-1005018	372-1005018	CRANKSHAFT TIMING GEAR	1
4	02.DLJ.372-1005017	372-1005017	TOOTHED BELT BAFFLE	1
5	02.DLJ.372-1005015	372-1005015	CRANKSHAFT FRONT OIL SEAL	1
6	02.DLJ.372-1005033	372-1005033	BEARING , NEEDLE	1
7	02.DLJ.372-1005032	372-1005032	WOODRUFF KEY	1
8	02.DLJ.372-1005010	372-1005010	CRANKSHAFT ASSY	1
9	02.DLJ.372-1005016	372-1005016	STOPPER PLATE	2
10	02.DLJ.S11-1601101	S11-1601101	BOLT , COVER SET	4
11	02.DLJ.372-1DF1005010	372-1DF1005010	BEARING - CRANKSHAFT	4
12	02.DLJ.372-1005036	372-1005036	PIN - DOWEL	1
13	02.DLJ.372-1005030	372-1005030	REAR OIL SEAL	1
14	02.DLJ.372-1005021	372-1005021	REAR OIL SEAL BRACKET	1
15	02.DLJ.Q1840820	Q1840820	BOLT , HEXAGON FLANGE	5
16	02.DLJ.372-1005050	372-1005050	FLYWHEEL ASSY	1
17	02.DLJ.372-1005054	372-1005054	BOLT , LOCK-FLY WHEEL	6
18	02.DLJ.S11QZ-QZWZCGQ	S11QZ-QZWZCGQ	SENSOR,CRANKSHAFT	1

			POSITION	
19	02.DLJ.S11-1601020	S11-1601020	COVER SET	1
20	02.DLJ.S11-1601030	S11-1601030	DRIVEN DISK ASSY	1

#### 4.EXHAUST MANIFOLD



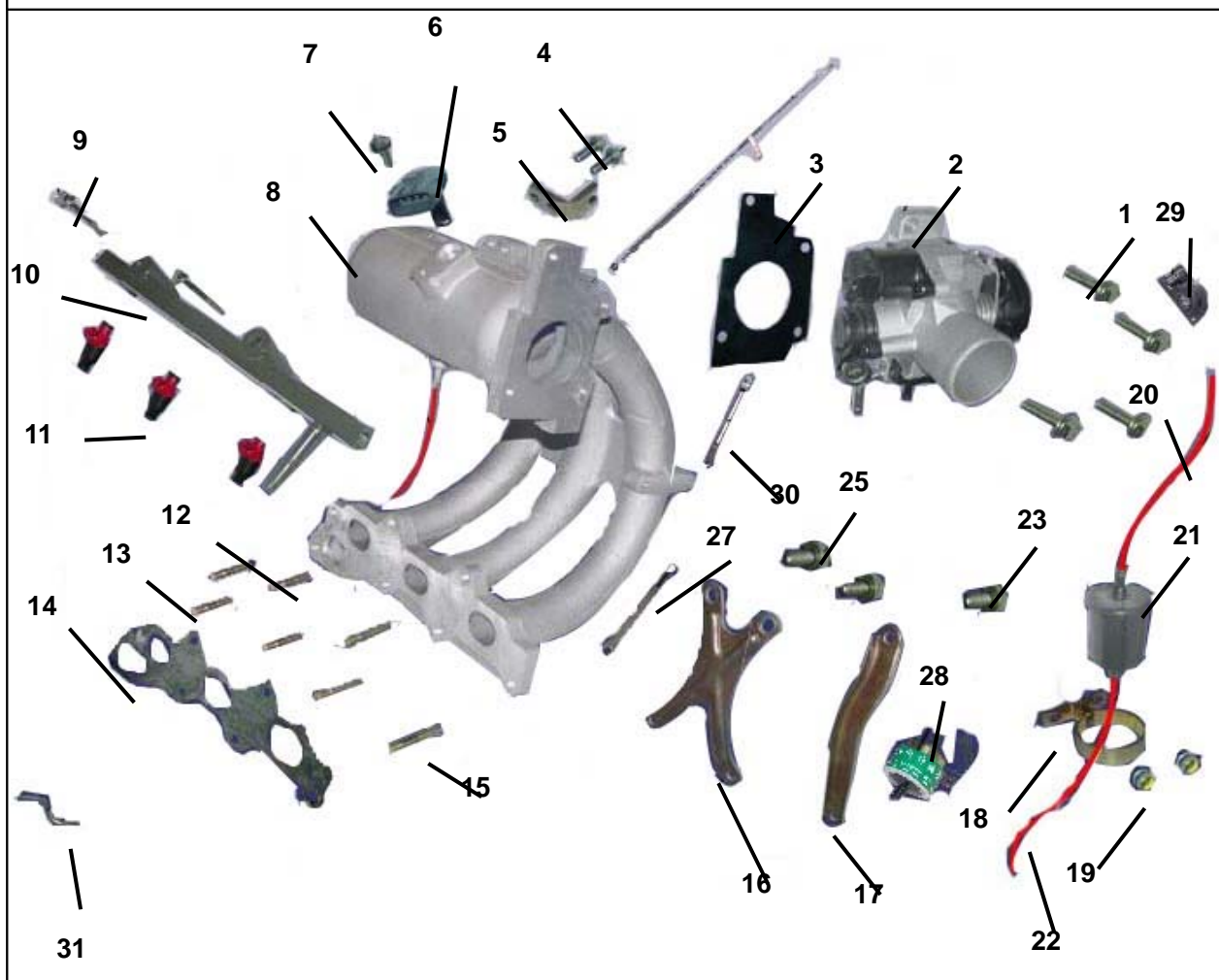
No	Erp code	Part number	Name	Quantity
1	02.DLJ.372-1008033	372-1008033	EXHAUST MANIFOLD WASHER	1
2	02.DLJ.SQR7080PQQG-PQQG	SQR7080PQQG-PQQG	EXHAUST MANIFOLD	1
3	02.DLJ.Q1200825F3	Q1200825F3	STUD	4
4	02.DLJ.Q33008	Q33008	NUT , HEXAGON	6
5	02.DLJ.372-1008044	372-1008044	HEAT INSULATOR	1
6	02.DLJ.Q1460612	Q1460612	BOLT , HEXAGON HEAD	4
7	02.DLJ.S11-1205110	S11-1205110	OXYGEN SENSOR	1
8	02.DLJ.Q1200835F3	Q1200835F3	STUD	1
9	02.DLJ.S11-3724863	S11-3724863	BRACKET,OXYGEN SENSOR	1

This diagram shows an exploded view of a mechanical assembly, likely a fuel system component. The parts are numbered 1 through 31. The central component is a large, light-colored, curved housing (8). To its right is a black, circular flange (3) and a cylindrical component (2). Below the housing is a complex, dark-colored bracket (16) and a curved, dark-colored arm (17). To the left of the housing is a long, dark-colored arm (10) with several red, conical components (11) attached. Below the arm (10) is a dark-colored, perforated plate (14). To the right of the housing is a cylindrical component (21) with a red cable (19) attached. Above the housing is a small, dark-colored component (6) and a small, dark-colored component (7). The diagram includes various bolts, nuts, and washers (1, 4, 5, 9, 12, 13, 15, 20, 23, 25, 26, 27, 28, 29, 30, 31) used to assemble the components.

No	Erp code	Part number	Name	Quantity
1	02.DLJ.Q1420625	Q1420625	BOLT , HEXAGON HEAD	4
2	02.DLJ.372-1107011CA	372-1107011CA	BODY - THROTTLE	1
3	02.DLJ.372-1107012	372-1107012	THROTTLE BODY WASHER	1
4	02.DLJ.Q1840620	Q1840620	BOLT , HEXAGON FLANGE	2
5	02.DLJ.372-1008043	372-1008043	ACCELERATOR PULLING WIRE BRACKET	1
6	02.DLJ.S11-1109411	S11-1109411	INTAKE TEMPERATUREAND PRESSURE SENSOR	1
7	02.DLJ.Q1400416	Q1400416	BOLT , HEXAGON HEAD	1
8	02.DLJ.372-1008013	372-1008013	MANIFOLD - AIR INTAKE	1
9	02.DLJ.Q1420645	Q1420645	BOLT , HEXAGON HEAD	2
10	02.DLJ.S11-1112030	S11-1112030	OIL RAIL	1
11	02.DLJ.S11-1112010	S11-1112010	INJECTOR ASSY	3
12	02.DLJ.Q1200835F3	Q1200835F3	STUD	2
13	02.DLJ.Q1200828F3	Q1200828F3	STUD	4
14	02.DLJ.372-1008021	372-1008021	INTAKE MANIFOLD WASHER	1
15	02.DLJ.Q1200840F3	Q1200840F3	STUD	1

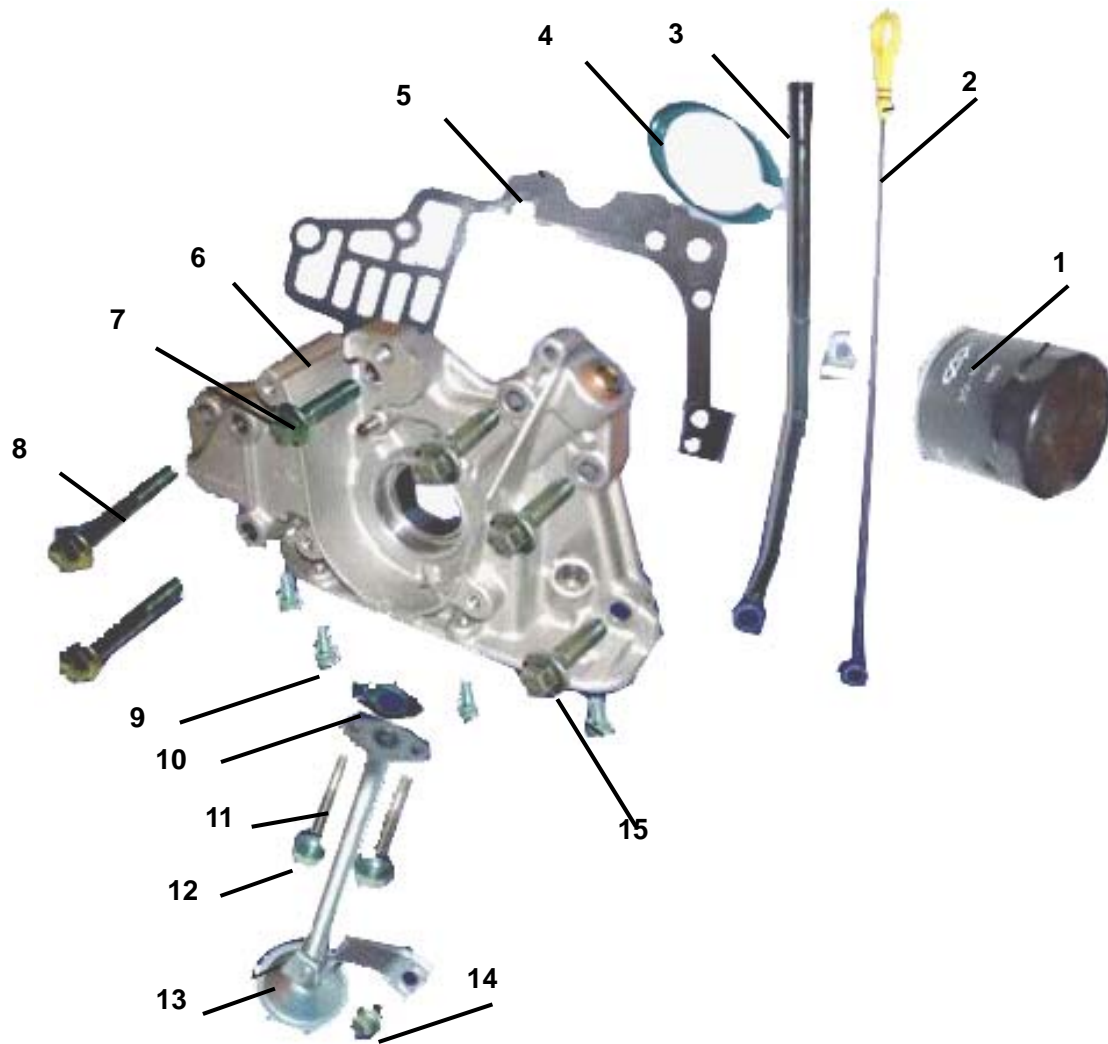


## 5.INTAKE SYSTEM



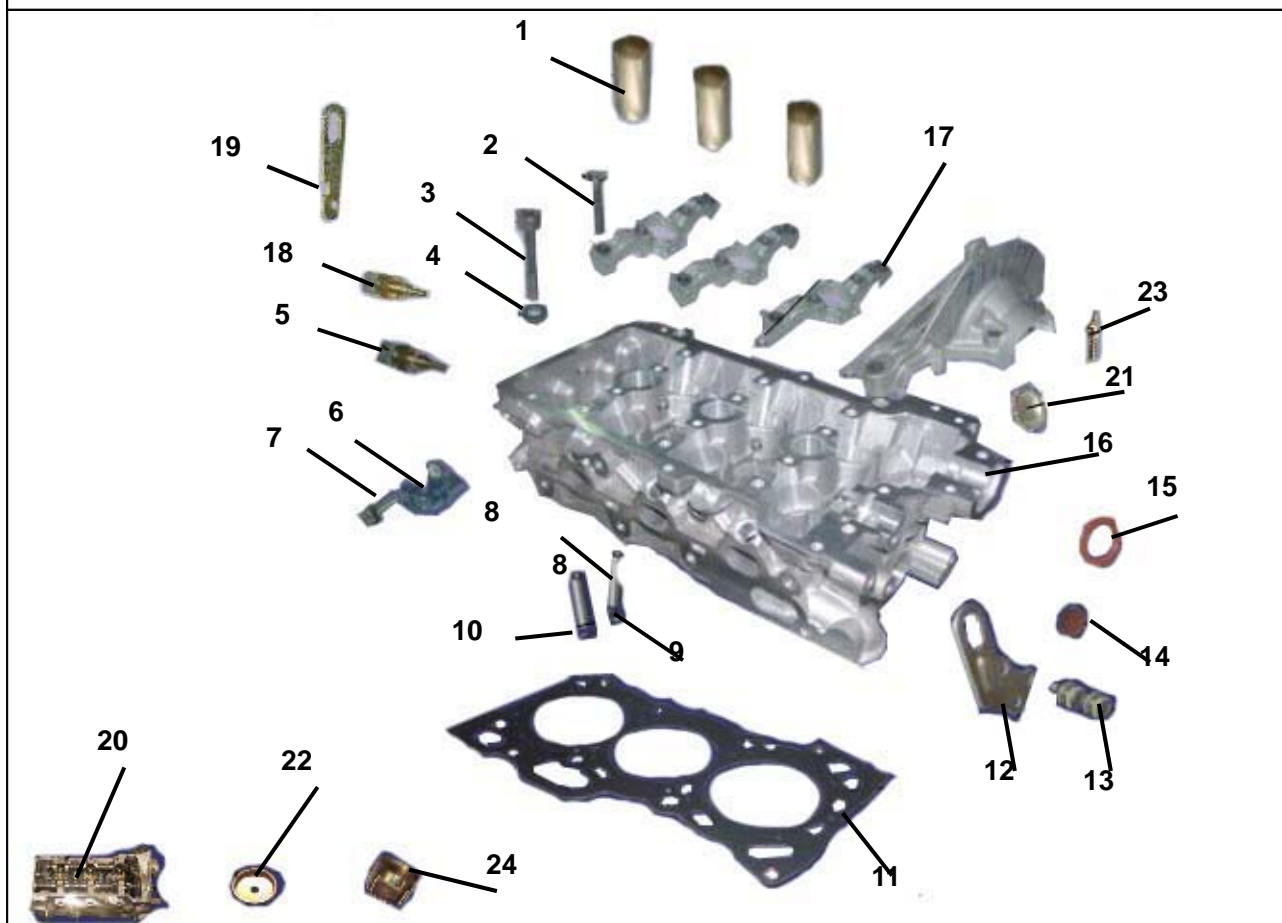
No	Erp code	Part number	Name	Quantity
16	02.DLJ.372-1008041	372-1008041	INTAKE MANIFOLD FRONT BRACKET	1
17	02.DLJ.372-1008042	372-1008042	INTAKE MANIFOLD REAR BRACKET	1
18	02.DLJ.372-1014150	372-1014150	CLAMP, FIXING	1
19	02.DLJ.Q1400612	Q1400612	BOLT , HEXAGON HEAD	2
10	02.DLJ.372-1014120	372-1014120	CRANKCASE VENTILATION PIPE (2)	1
21	02.DLJ.372-1014140	372-1014140	OIL-GAS SEPARATOR ASSY	1
22	02.DLJ.372-1014110	372-1014110	CRANKCASE VENTILATION PIPE (1)	1
23	02.DLJ.Q1840816	Q1840816	BOLT , HEXAGON FLANGE	2
24	02.DLJ.372-1014130	372-1014130	CRANKCASE VENTILATION PIPE (3)	1
25	02.DLJ.Q1840820	Q1840820	BOLT , HEXAGON FLANGE	2
27	02.DLJ.372-1008082EA	372-1008082EA	BRACKET - INLET MANIFOLD	1
28	02.DLJ.372-1014140AB	372-1014140AB	SEPARATOR - TEMPERATURE SELFCONTROL	1
29	02.DLJ.372-1107051	372-1107051	SENSOR - THROTTLE POSITION	1
30	02.DLJ.S11-1008020FA	S11-1008020FA	BRACKET - THROTTLE	1
31	02.DLJ.S11-1109416BA	S11-1109416BA	HOSE- PVC VALVE TO AIR INTAKE PIPE	1

## 6.LUBRICATING DEVICE



No	Erp code	Part number	Name	Quantity
1	02.DLJ.372-1012010	372-1012010	OIL FILTER ASSY	1
2	02.DLJ.372-1009130	372-1009130	OIL DIP STICK ASSY	1
3	02.DLJ.372-1009120	372-1009120	OIL DIP STICK PIPE ASSY	1
4	02.DLJ.372-1011055	372-1011055	SEAL STRIP	1
5	02.DLJ.372-1011021	372-1011021	OIL PUMP WASHER	1
6	02.DLJ.372-1011030	372-1011030	OIL PUMP ASSY	1
7	02.DLJ.Q1840825	Q1840825	BOLT	1
8	02.DLJ.Q1840855	Q1840855	BOLT ( M8X55 )	2
9	02.DLJ.Q1420612	Q1420612	BOLT , HEXAGON HEAD	17
10	02.DLJ.372-1010017	372-1010017	OIL STRAINER WASHER	0
11	02.DLJ.Q1200616	Q1200616	STUD	2
12	02.DLJ.Q33006	Q33006	NUT , HEXAGON	2
13	02.DLJ.372-1010010	372-1010010	OIL STRAINER ASSY	1
14	02.DLJ.Q1840610	Q1840610	BOLT , HEXAGON FLANGE	1
15	02.DLJ.Q1840830	Q1840830	BOLT , HEXAGON FLANGE	3

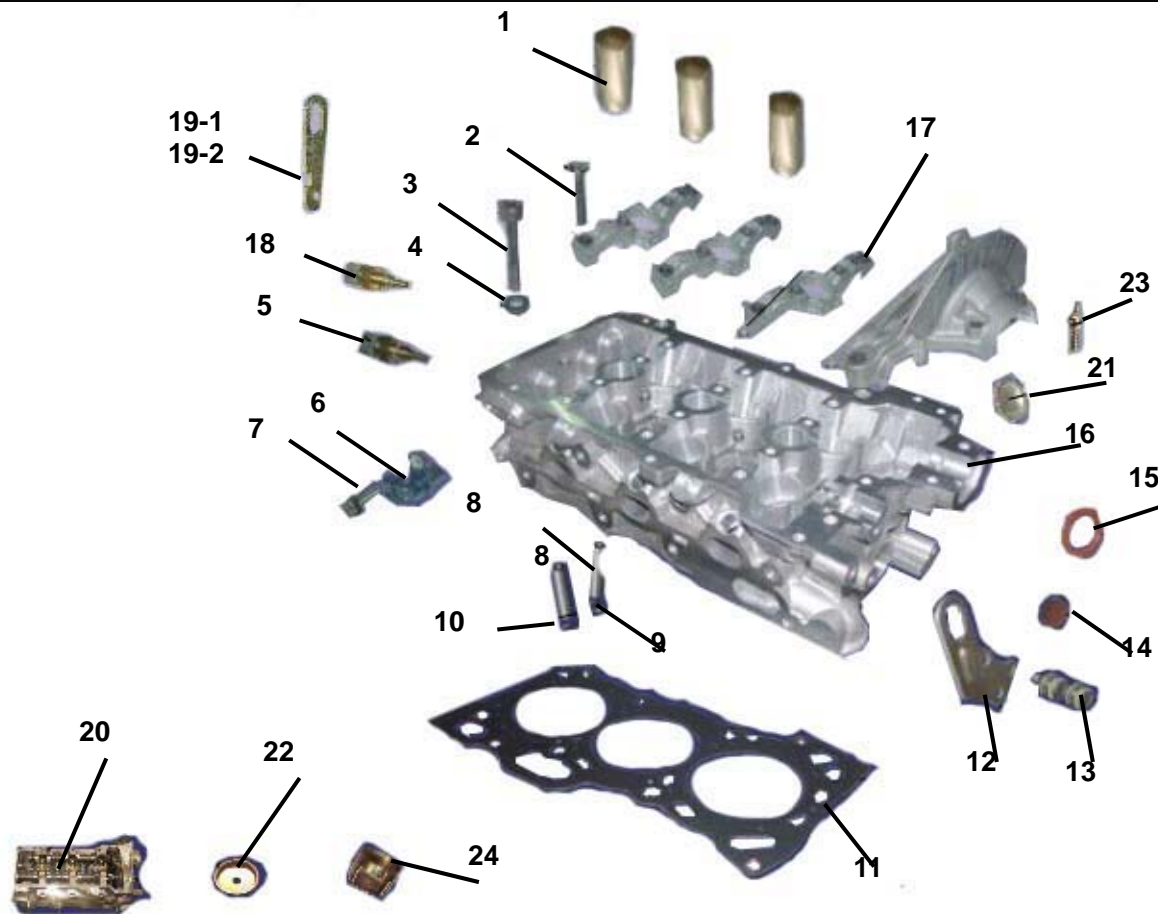
## 7.CYLINDER HEAD



No	Erp code	Part number	Name	Quantity
1	02.DLJ.372-1003074	372-1003074	SPARK PLUG SLEEVE	3
2	02.DLJ.Q1400638	Q1400638	BOLT , HEXAGON HEAD	17
3	02.DLJ.372-1003051	372-1003051	BOLT , CYLINDER HEAD	8
4	02.DLJ.372-1003052	372-1003052	CYLINDER HEAD BOLT WASHER	8
5	02.DLJ.S11-3808013	S11-3808013	SENSOR , WATER TEMP.	1
6	02.DLJ.S11-1003069	S11-1003069	SENSOR,CAMSHAFT POSITION	1
7	02.DLJ.Q1400816	Q1400816	BOLT , HEXAGON HEAD	1
8	02.DLJ.372-1003023	372-1003023	GUIDE - VALVE	12
9	02.DLJ.372-1003022	372-1003022	EXHAUST VALVE SEAT INSERT	6
10	02.DLJ.372-1003021	372-1003021	INTAKE VALVE SEAT INSERT	6
11	02.DLJ.372-1003040	372-1003040	GASKET - CYLINDER HEAD	1
12	02.DLJ.372-1003202	372-1003202	FRONT TRUNNION	1
13	02.DLJ.Q1840816	Q1840816	BOLT , HEXAGON FLANGE	2
14	02.DLJ.372-1003067	372-1003067	BLOCK COVER	1
15	02.DLJ.372-1003066	372-1003066	CAMSHAFT OIL SEAL	1
16	02.DLJ.372-1003010	372-1003010	HEAD ASSY - CYLINDER	1



## 7.CYLINDER HEAD



No	Erp code	Part number	Name	Quantity
17	02.DLJ.372-1003063	372-1003063	CAMSHAFT BEARING CAP POSITION COVER	8
18	02.DLJ.S11-3808010	S11-3808010	SENSOR SET , WATER TEMP.	0
19-1	02.DLJ.372-1003201	372-1003201	HANGER - REAR ENGINE	0
19-2	02.DLJ.372-1003201BA	372-1003201BA	HANGER - REAR ENGINE	1
20	02.DLJ.372-1003001	372-1003001	HEAD ASSY - CYLINDE	1
21	02.DLJ.372-1003024	372-1003024	PLUG - BOWL SHAPE	1
22	02.DLJ.372-1003028	372-1003028	PLUG	1
23	02.DLJ.372-1003038	372-1003038	STUD	1
24	02.DLJ.372-1003076	372-1003076	BUSH - WATER PROOF	1

## 8.COVER-VALVE CHAMBER



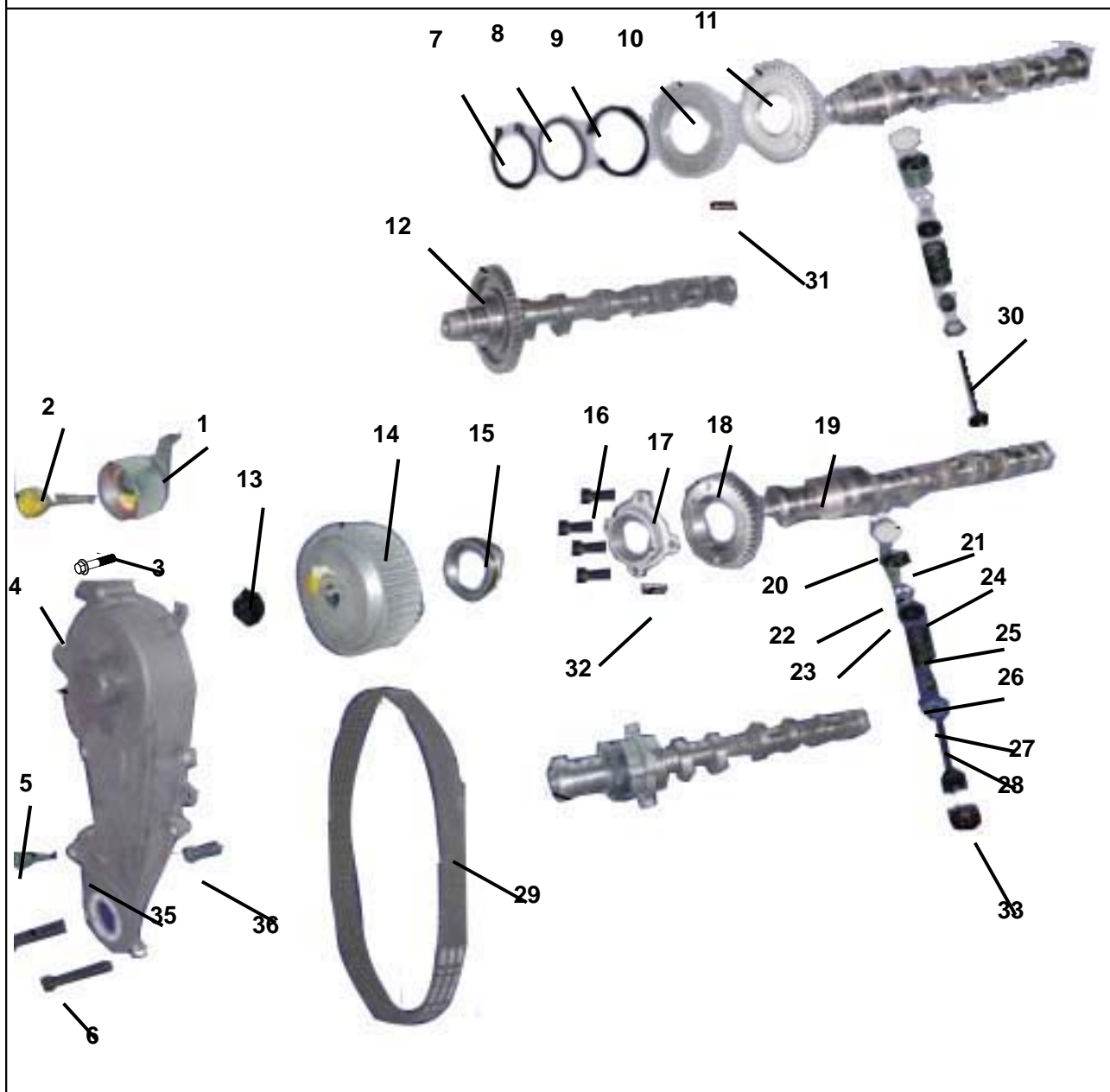
No	Erp code	Part number	Name	Quantity
1	02.DLJ.372-1003090	372-1003090	OILING PORT COVER ASSY	1
2	02.DLJ.Q2540616	Q2540616	SCREW	6
3	02.DLJ.372-1003075	372-1003075	ENGINE TRIMING COVER ASSY	1
4	02.DLJ.372-1003030	372-1003030	COVER ASSY - ROCKER	1
5	02.DLJ.372-1003036	372-1003036	CYLINDER HEAD COVER GASKET	1
6	02.DLJ.Q1460625	Q1460625	BOLT , HEXAGON HEAD	5

9.OIL PAN



No	Erp code	Part number	Name	Quantity
1	02.DLJ.372-1009010	372-1009010	OIL PAN ASSY	1
2	02.DLJ.Q1420612	Q1420612	BOLT , HEXAGON HEAD	17
3	02.DLJ.372-1009017	372-1009017	SEAL WASHER-OIL DRAIN THREADED PLUG	1
4	02.DLJ.372-1009014	372-1009014	PLUG , MAGNET	1

## 10.VALVE MECHANISM

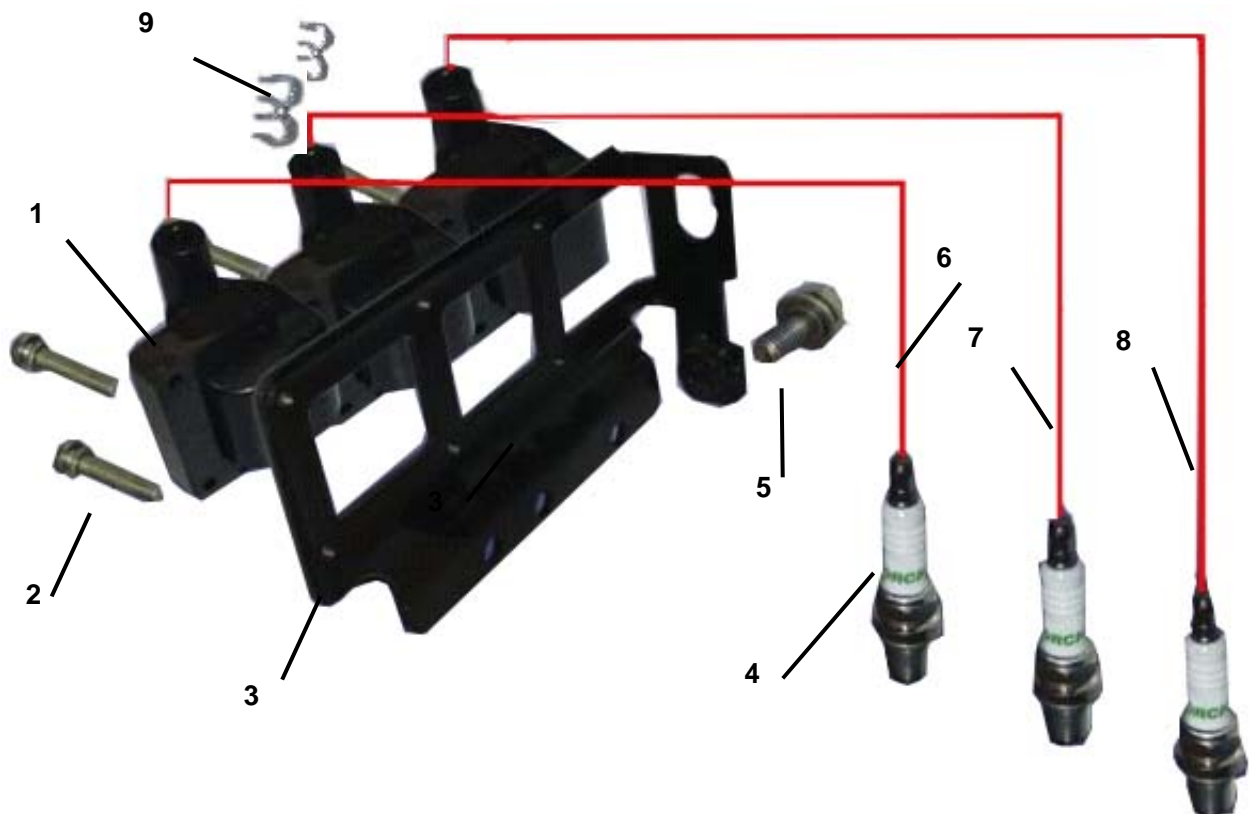


No	Erp code	Part number	Name	Quantity
1	02.DLJ.372-1007030	372-1007030	TENSIONING PULLEY ASSY	1
2	02.DLJ.Q1401045	Q1401045	BOLT , HEXAGON HEAD	1
3	02.DLJ.Q1400616	Q1400616	BOLT , HEXAGON HEAD	3
4	02.DLJ.372-1007040	372-1007040	TIMING GEAR COVER ASSY	1
5	02.DLJ.Q1460625	Q1460625	BOLT , HEXAGON HEAD	2
6	02.DLJ.Q1460650	Q1460650	BOLT , HEXAGON HEAD	2
7	02.DLJ.Q43140	Q43140	RING,SHIELD-SHAFT SPRING	1
8	02.DLJ.372-1006032	372-1006032	SADDLE FLIP WASHER	1
9	02.DLJ.372-1006031	372-1006031	DRIVE RING	1
10	02.DLJ.372-1006041	372-1006041	GEAR ( SUB ) - INTAKE CAMSHAFT	1
11	02.DLJ.372-1006030	372-1006030	GEAR ( MAIN ) - INTAKE CAMSHAFT	1
12	02.DLJ.372-1006020	372-1006020	CAMSHAFT ASSY - INTAKE	1

13	02.DLJ.372-1006071	372-1006071	BOLT , HEXAGON FLANGE	1
14	02.DLJ.372-1006066	372-1006066	SPROCKET , TIMING BELT	1
15	02.DLJ.372-1006064	372-1006064	NUT , LOCK-CLUTCH HUB	1
16	02.DLJ.Q2180620	Q2180620	BOLT,INNER HEXGON HEAD	4
17	02.DLJ.372-1006063	372-1006063	COUPLING FLANGE	1
18	02.DLJ.372-1006062	372-1006062	EXHAUST CAMSHAFT GEAR	1
19	02.DLJ.372-1006060	372-1006060	CAMSHAFT ASSY - EXHAUST	1
20	02.DLJ.372-1007017	372-1007017	ADJUSTMENT WASHER	12
21	02.DLJ.372-1007018	372-1007018	VALVE LIFTER	12
22	02.DLJ.372-1007019	372-1007019	VALVE LOCK BLOCK	24
23	02.DLJ.372-1007021	372-1007021	EDDY SLEEVE	12
24	02.DLJ.372-1007014BA	372-1007014BA	UPPER SEAT,VALVE SPRING	12
25	02.DLJ.372-1007013	372-1007013	SPRING - VALVE	12
26	02.DLJ.372-1007020	372-1007020	SEAL , VALVE	12
27	02.DLJ.372-1007016	372-1007016	LOWER VALVE SPRING SEAT	12
28	02.DLJ.372-1007012	372-1007012	VALVE , EXHAUST	6
29	02.DLJ.372-1007081	372-1007081	TOOTHED TIMING BELT	1
30	02.DLJ.372-1007011	372-1007011	VALVE , INLET	1
31	02.DLJ.372-1006042	372-1006042	PIN - GEAR	1
32	02.DLJ.372-1006067	372-1006067	PIN - STOPPER	1
33	02.DLJ.372-1007014	372-1007014	SEAT - VALVE SPRING UPPER	1
34	02.DLJ.Q673B155	Q673B155	CLAMP	1
35	02.DLJ.472-1007042	472-1007042	LOWER COVER-TIMING GEAR	1
36	02.DLJ.480-1011062	480-1011062	BOLT	1



## 11.IGNITION DEVICE



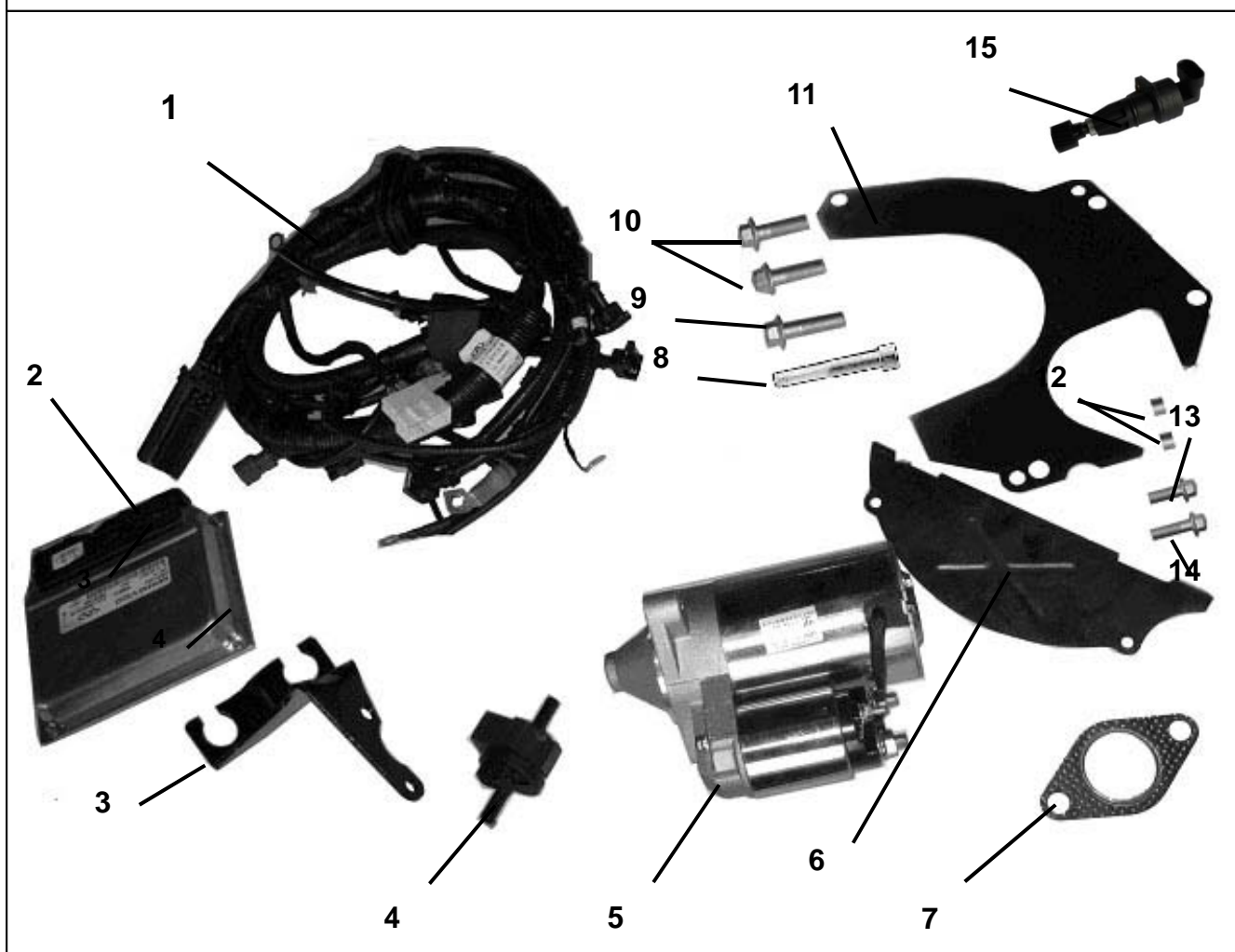
No	Erp code	Part number	Name	Quantity
1	02.DLJ.S11-3705100	S11-3705100	IGNITION COIL	3
2	02.DLJ.Q2320525	Q2320525	SCREW AND WASHER UNIT	6
3	02.DLJ.S11-3705001	S11-3705001	BRACKET , IGNITION COIL	1
4	02.DLJ.S11-3707100	S11-3707100	SPARK PLUG ASSY	3
5	02.DLJ.Q1460820	Q1460820	BOLT , HEXAGON HEAD	1
6	02.DLJ.S11-3707040	S11-3707040	CORD NO.3 , HI.TENSION	1
7	02.DLJ.S11-3707030	S11-3707030	CORD NO.2 , HI.TENSION	1
8	02.DLJ.S11-3707020	S11-3707020	CORD NO.1 , HI.TENSION	1
9	02.DLJ.S11-3724183	S11-3724183	CLIP	0

## 12.PISTON AND CONNECTING ROD DEVICE



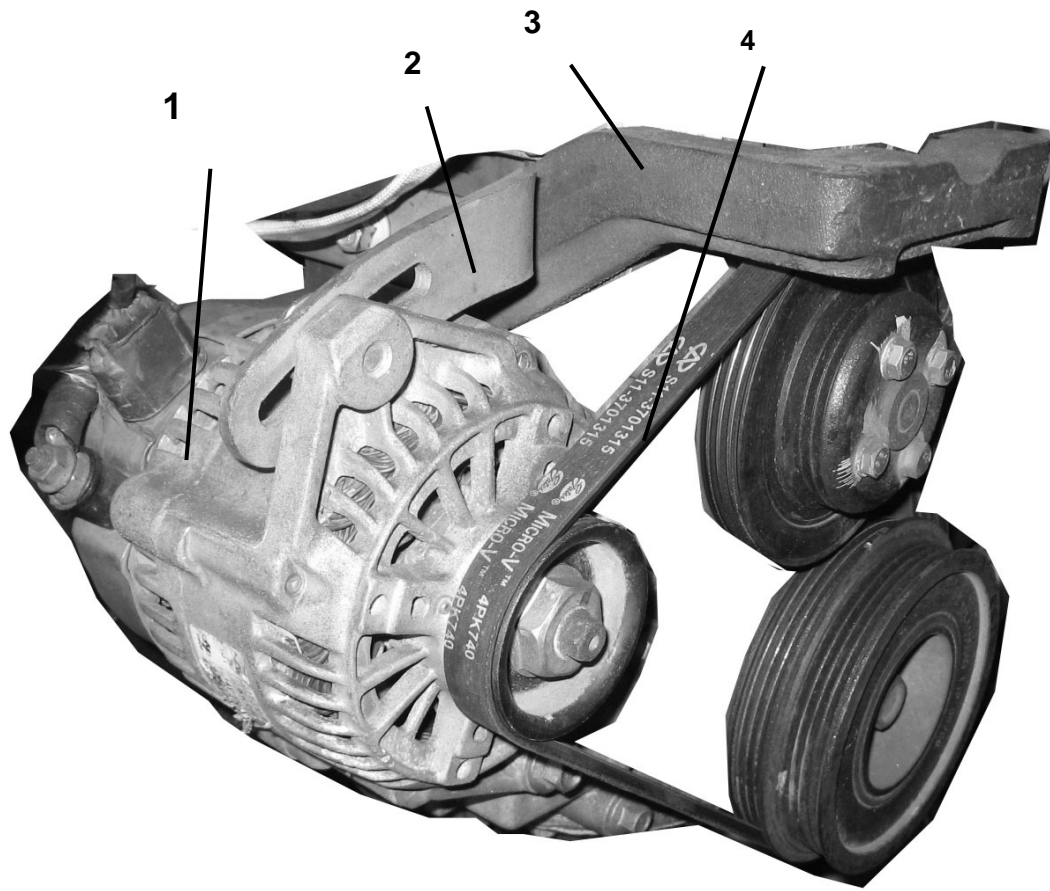
No	Erp code	Part number	Name	Quantity
1	02.DLJ.372-1DE1004030	372-1DE1004030	RING ASSY - PISTON	1
2	02.DLJ.372-1004031	372-1004031	PISTON PIN	3
3	02.DLJ.372-1004021	372-1004021	PISTON	3
4	02.DLJ.372-1004110	372-1004110	CONNECTING ROD ASSY	3
5	02.DLJ.372-1DF1004110	372-1DF1004110	BEARING - CONNECTING ROD	6

### 13. OTHER ACCESSORY 1



No	Erp code	Part number	Name	Quantity
1	02.DLJ.S11-3724180CA	S11-3724180CA	Engine Harness	1
2	02.DLJ.SAA-3605010BA-1	S11-3605010BA-1	372 ECU	1
3	02.SV1100.05.02.01	SV1100.05.02.01.00	Shift Bracket	1
4	02.DLJ.S11-1206211	S11-1206211	PCV ,carbon can	1
5	02.DLJ.S11-3708110BA	S11-3708110BA	Starter assembly	1
6	02.DLJ.S11-1700103	S11-1700103	lower Steel cushion	1
7	02.DLJ.S11-1200011CA	S11-1200011CA	Single Exhaust Gasket	1
8	02.DLJ.Q1841245	Q1841245	Hex socket head bolt M12*45	1
9	02.DLJ.Q218B1245	Q218B1245	Bolt 12*45	1
10	02.DLJ.Q1841240	Q1841240	Bolt 12*50	2
11	02.DLJ.372-1002030	372-1002030	Upper steel cushion	1
12	02.DLJ.S11-3708111	S11-3708111	locating dowel	2
13	02.DLJ.Q1840845	Q1840845	Bolt 8*45	2
14	02.DLJ.Q1840850	Q1840850	Bolt 8*50	1
15	02.DLJ.S11-3802020	S11-3802020	Electric odometer sensor assy	1

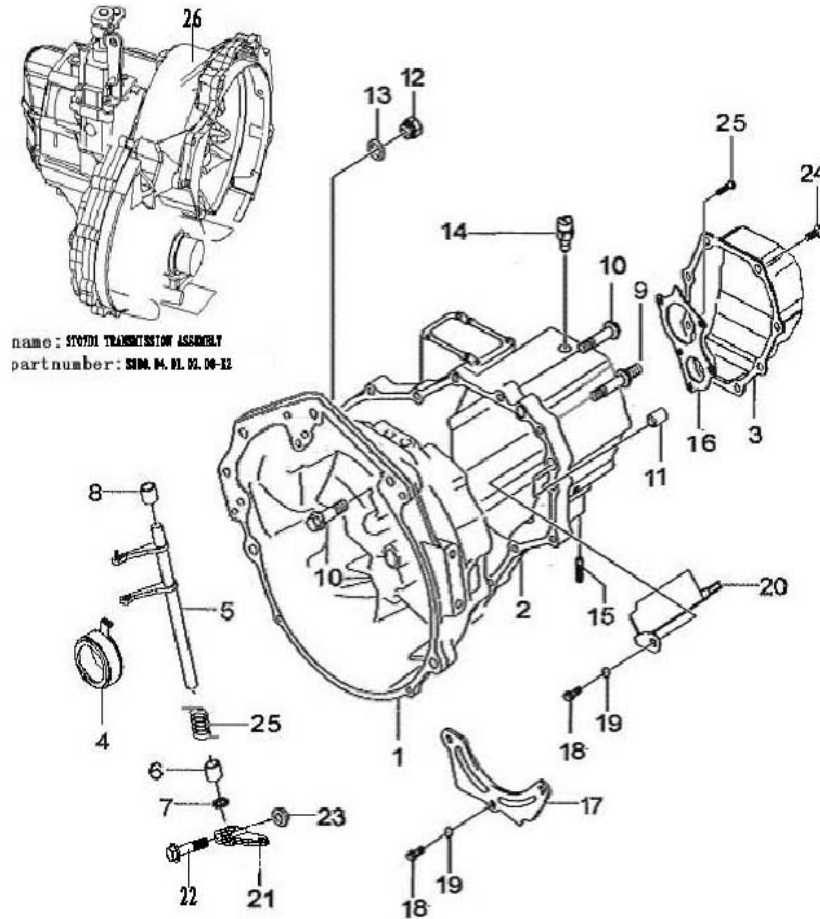
## 14. OTHER ACCESSORY 2



No	Erp code	Part number	Name	Quantity
1	02.DLJ.S11-3701110BB	S11-3701110BB	Alternator	1
2	02.DLJ.S11-3701211BA	S11-3701211BA	Alternator bracket	1
3	02.DLJ.S11-1001415BA	S11-1001415BA	Rear bracket	1
4	02.DLJ.S11-3701315	S11-3701315	V-ribbed belt	1

## 2.TRANSSMISSION

### 1.CASE&ACCESSORY

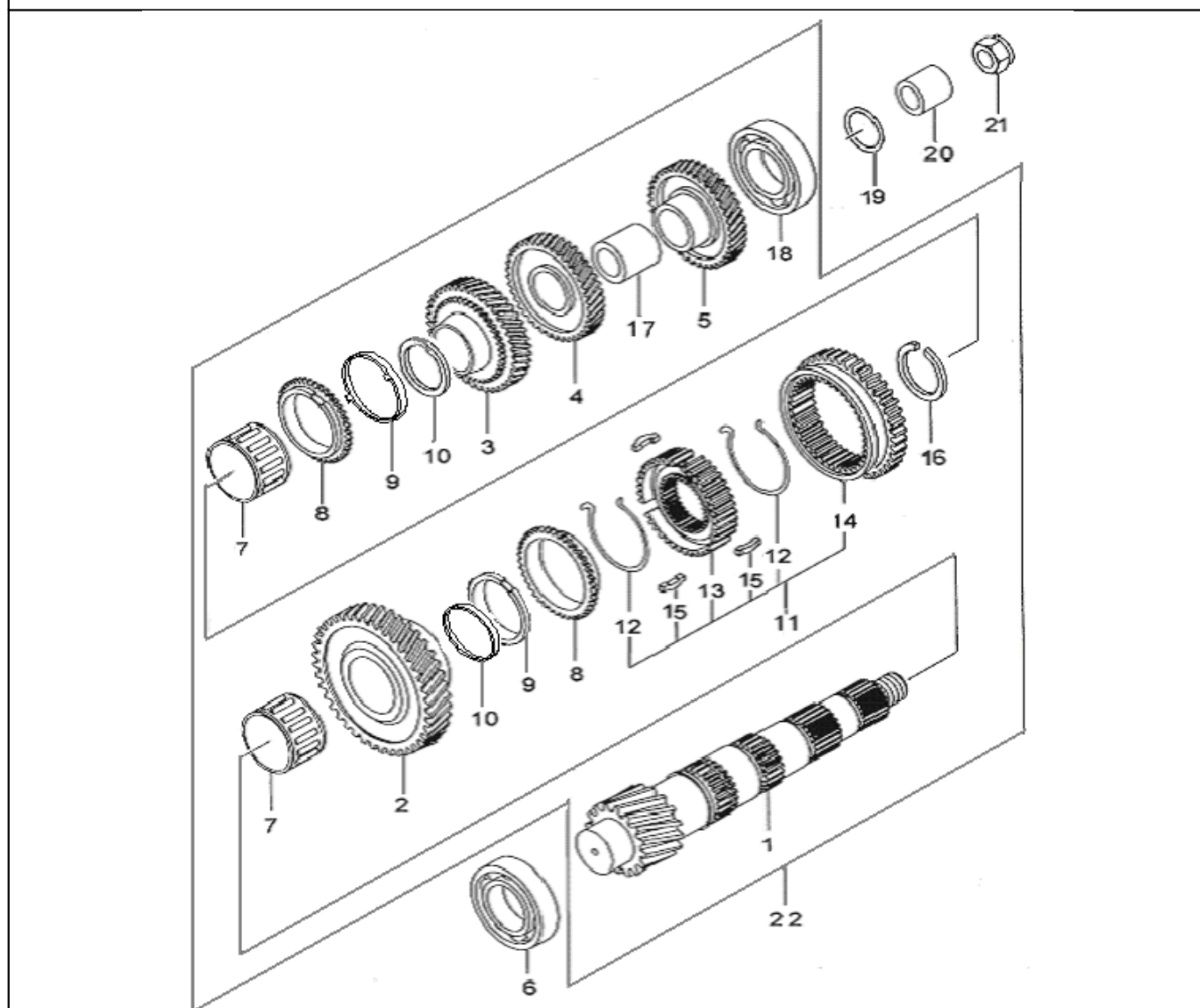


No	ERP CODE	Part number	Name	Quantity
1	02.DLJ.QR51 - 1701101	QR512 - 1701101	Clutch case	1
2	02.DLJ.4T08 - 1701111	4T08A1 - 1701111	Transmission case	1
3	02.DLJ.5T07 - 1701020	5T07 - 1701020	Side cover	1
4	02.DLJ.5T07 - 1702010	5T07 - 1702010	Declutch bearing	1
5	02.DLJ.5T0 - 1702020A	5T07 - 1702020A	Declutch fork	1
6	02.DLJ.5T07 - 1702004	5T07 - 1702004	Clutch fork 2 sleeve	1
7	02.DLJ.5T07 - 1702030	5T07 - 1702030	Clutch fork seal	2
8	02.DLJ.5T07 - 1702001	5T07 - 1702001	Clutch fork 1 sleeve	1
9	02.DLJ.QR51 - 1701103	QR512 - 1701103	Double - screw rod	2
10	03.01.5787-M8x40/05	5787 - M8x40	Flange bolt M8x40	12
11	02.DLJ.5T07 - 1701001	5T07 - 1701001	Locating pin	2
12	02.DLJ.5T07 - 1701002	5T07 - 1701002	Oil plug screw	1
13	02.DLJ.5T07 - 1701003	5T07 - 1701003	Screw plug washer	2
14	02.DLJ.5T07 - 3729010	5T07 - 3729010	Back - up light switch	1
15	02.DLJ.5T0 - 1701058A	5T07 - 1701058A	Double - screw rod	1
16	02.DLJ.5T07 - 1701009	5T07 - 1701009	Bearing stop plate	1



17	02.DLJ.5T07 - 1701004	5T07 - 1701004	Oil - stop plate	1
18	03.01.5787-M6×12/05	5787 - AM6X12	Flange bolt M6x12	2
19	03.02.2842-M6/05	7246 - W6	Flat washer 6	4
20	02.DLJ.5T07 - 1701400	5T07 - 1701400	Oil groove	1
21	02.TR1100.04.01.02.01	TR1100.04.01.02.01	Clutch rocker	1
22	03.01.5787-M8×35/05	5787 - AM8X35	Flange bolt M8x35	1
23	03.02.2842-M8/05	6177.1 - 8	Flange nut M8	1
24	02.DLJ.5T07 - 1701603	5T07 - 1701603	Side cover bolt	8
25	02.DLJ.QR51 - 1602113	QR512 - 1602113	Declutch release spring	1
26	02.S800.04.01.02.	S800.04.01.02.0 - R2	512 Transmission assy	1

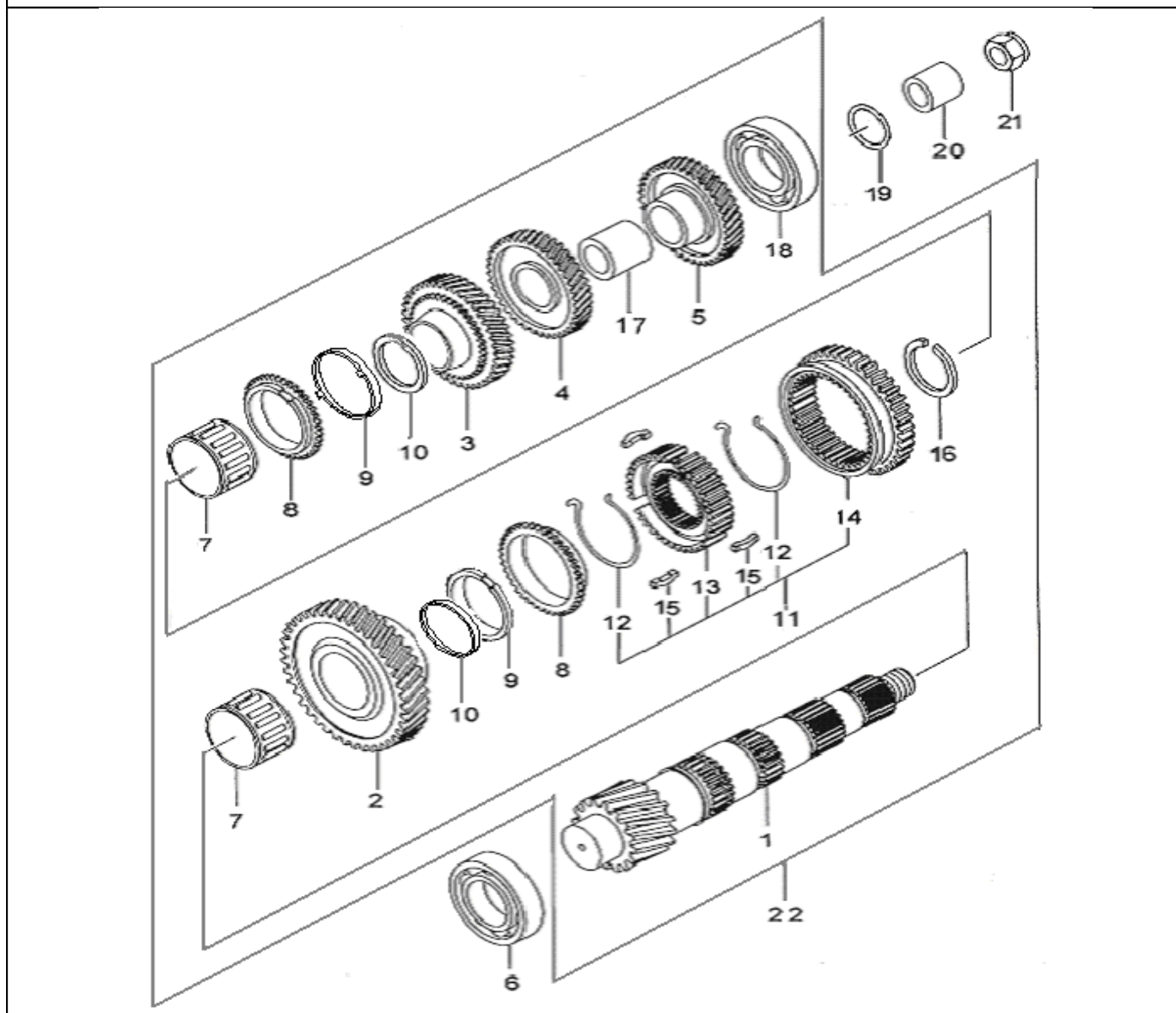
## 2.COUNTERSHAFT



No	ERP CODE	Part number	Name	Quantity
1	02.DLJ.4T08A-1701401	4T08A-1701401	COUNTERSHAFT	1
2	02.DLJ.QR512-1701410	QR512-1701410	DRIVEN GEAR ASSY.FIRST GEAR	1
3	02.DLJ.4T08A1-1701420	4T08A1-1701420	DRIVEN GEAR ASSY.SECOND GEAR	1
4	02.DLJ.4T08A1-1701441	4T08A1-1701441	DRIVEN GEAR.THIRD GEAR	1
5	02.DLJ.4T08A1-1701461	4T08A1-1701461	DRIVEN GEAR.FOURTH GEAR	1

6	02.DLJ.5T07-1701610	5T07-1701610	BEARING.OUTPUT SHAFT.FRONT	1
7	02.DLJ.5T07-1701240	5T07-1701240	NEEDLE BEARING.1ST GEAR&2ND GEAR	2
8	02.DLJ.QR512-1701439	QR512-1701439	OUTER RING.SYNCHRONIZER.1ST GEAR&2ND GEAR	2
9	02.DLJ.QR512-1701406	QR512-1701406	MID RING.SYNCHRONIZER.1ST GEAR&2ND GEAR	2
10	02.DLJ.QR512-1701435	QR512-1701435	INNER RING.SYNCHRONIZER.1ST GEAR&2ND GEAR	2
11	02.DLJ.QR512-1701430	QR512-1701430	SYNCHRONIZER.1ST GEAR&2ND GEAR	1

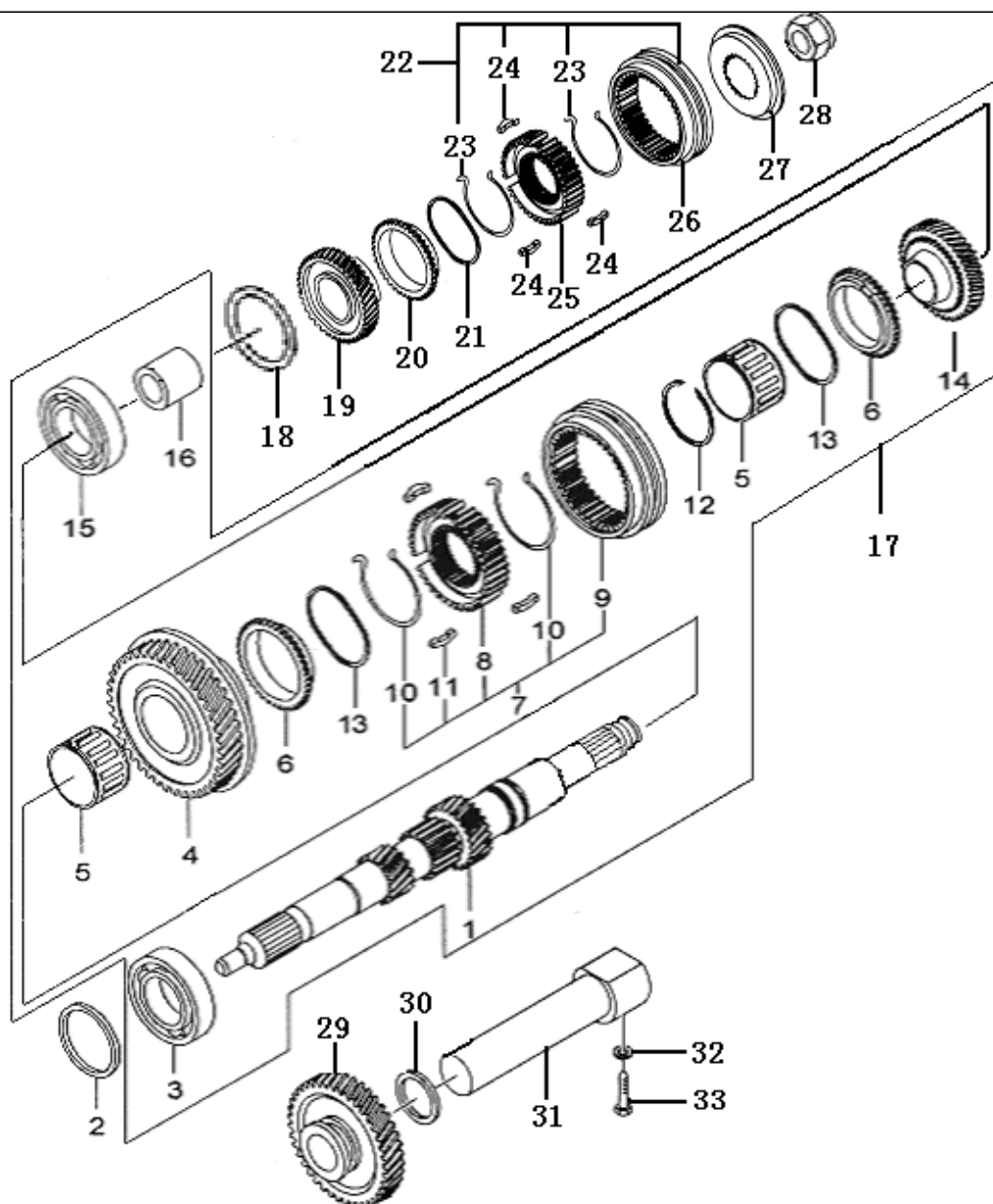
## 2.COUNTERSHAFT



No	ERP CODE	Part number	Name	Quantity
12	02.DLJ.QR512-1701433	QR512-1701433	SPRING.SYNCHRONIZER.1ST GEAR&2ND GEAR	2
13	02.DLJ.QR512-1701434	QR512-1701434	GEAR-HUB.SYNCHRONIZER.1ST GEAR&2ND GEAR	1
14	02.DLJ.QR512-1701431	QR512-1701431	GEAR-SLEEVE.SYNCHRONIZER.1ST GEAR&2ND GEAR	1

15	02.DLJ.QR512-1701432	QR512-1701432	GUIDE BLOCK.SYNCHRONIZER.1ST GEAR&2ND GEAR	3
16	02.DLJ.5T07-1701205	5T07-1701205	RETAINER.SYNCHRONIZER.1ST GEAR&2ND GEAR	1
17	02.DLJ.5T07-1701202	5T07-1701202	SPACER.3RD GEAR&4TH GEAR	1
18	02.DLJ.5T07-1701250	5T07-1701250	REAR BEARING.OUTPUT SHAFT	1
19	02.DLJ.QR512-1701187	QR512-1701187	ADJUSTING WASHER. REAR BEARING.OUTPUT SHAFT	Demand
20	02.DLJ.4T08A-1701402	4T08A-1701402	SLEEVE.COUNTERSHAFT	1
21	02.DLJ.MQC4-1701219	MQC4-1701219	NUT.COUNTERSHAFT	1
22	02.DLJ.4T08A1-1701400	4T08A1-1701400	COUNTERSHAFT ASSY	1

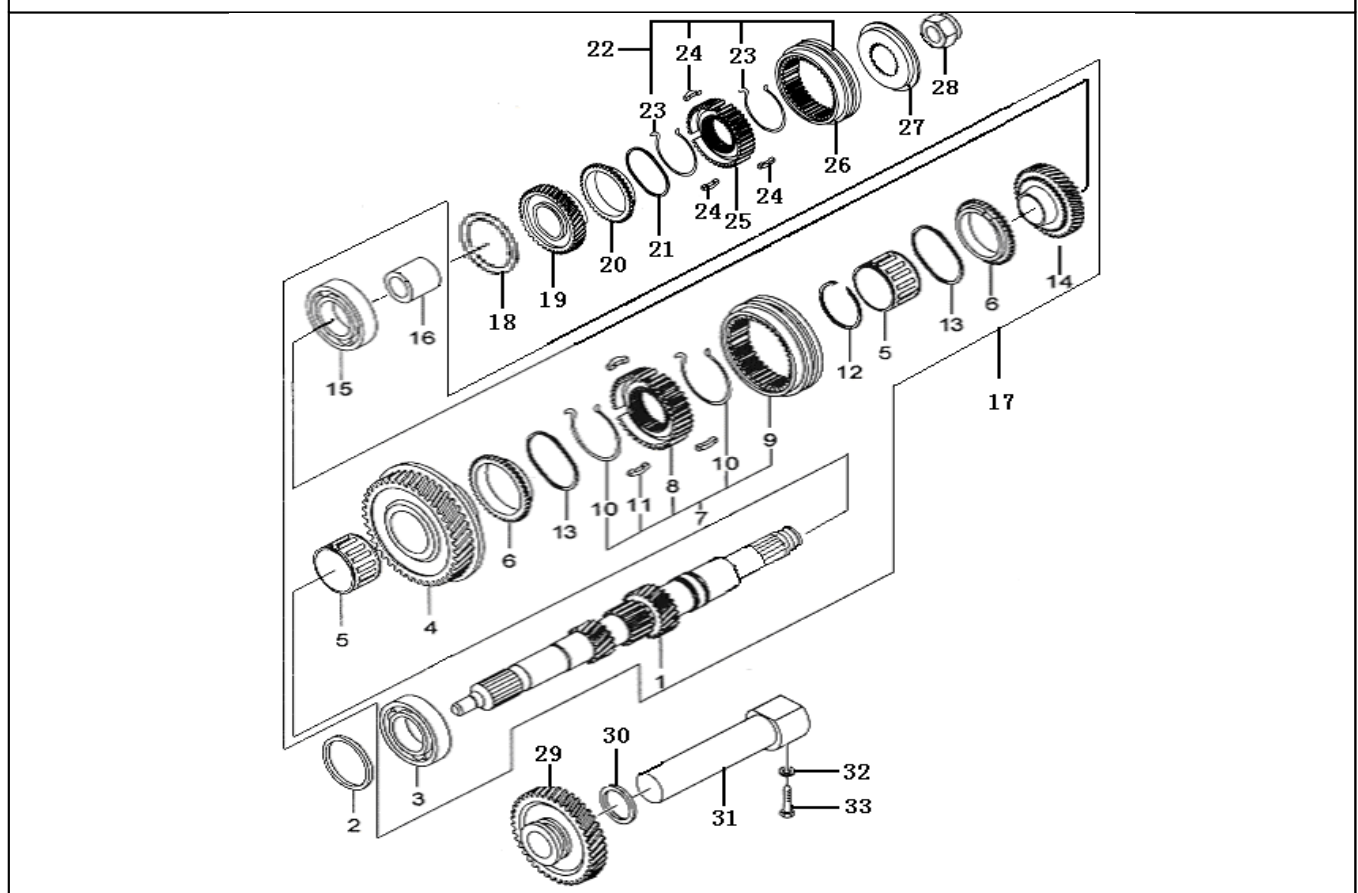
### 3.INPUT SHAFT ASSY



No	ERP CODE	Part number	Name	Quantity
1	02.DLJ.QR512 - 1701201	QR51 - 1701201	Input shaft	1

2	02.DLJ.5T07 - 1701080	5T07 - 1701080	Input shaft seal	1
3	02.DLJ.4T08 - 1701130	4T08 - 1701130	Bearing 6204/YA/P63	1
4	02.DLJ.QR512 - 1701240	QR51 - 1701240	3 <sup>TH</sup> gear assy	1
5	02.DLJ.5T07 - 1701150	5T07 - 1701150	Needle bearing of 3 <sup>RD</sup> &4 <sup>TH</sup> gear	2
6	02.DLJ.QR512 - 1701257	QR51 - 1701257	Synchronizer ring of 3 <sup>TH</sup> &4 <sup>TH</sup> & 5 <sup>TH</sup> gear	1
7	02.DLJ.QR512 - 1701250	QR51 - 1701250	Synchronizer assy of 3 <sup>TH</sup> &4 <sup>TH</sup>	1
8	02.DLJ.QR512 - 1701252	QR51 - 1701252	Synchronizer gear - hub of 3 <sup>TH</sup> &4 <sup>TH</sup> gear	1
9	02.DLJ.QR512 - 1701251	QR51 - 1701251	Synchronizer gear-sleeve of 3 <sup>TH</sup> &4 <sup>TH</sup> gear	1
10	02.DLJ.QR512 - 1701254	QR51 - 1701254	Synchronizer spring of 3 <sup>TH</sup> &4 <sup>TH</sup> & 5 <sup>TH</sup> gear	1
11	02.DLJ.QR512 - 1701253	QR51 - 1701253	Synchronizer gear block of 3 <sup>TH</sup> &4 <sup>TH</sup> gear	3
12	02.DLJ.5T07 - 1701103	5T07 - 1701103	Synchronizer retainer of 3 <sup>TH</sup> &4 <sup>TH</sup> gear	1

### 3.INPUT SHAFT ASSY

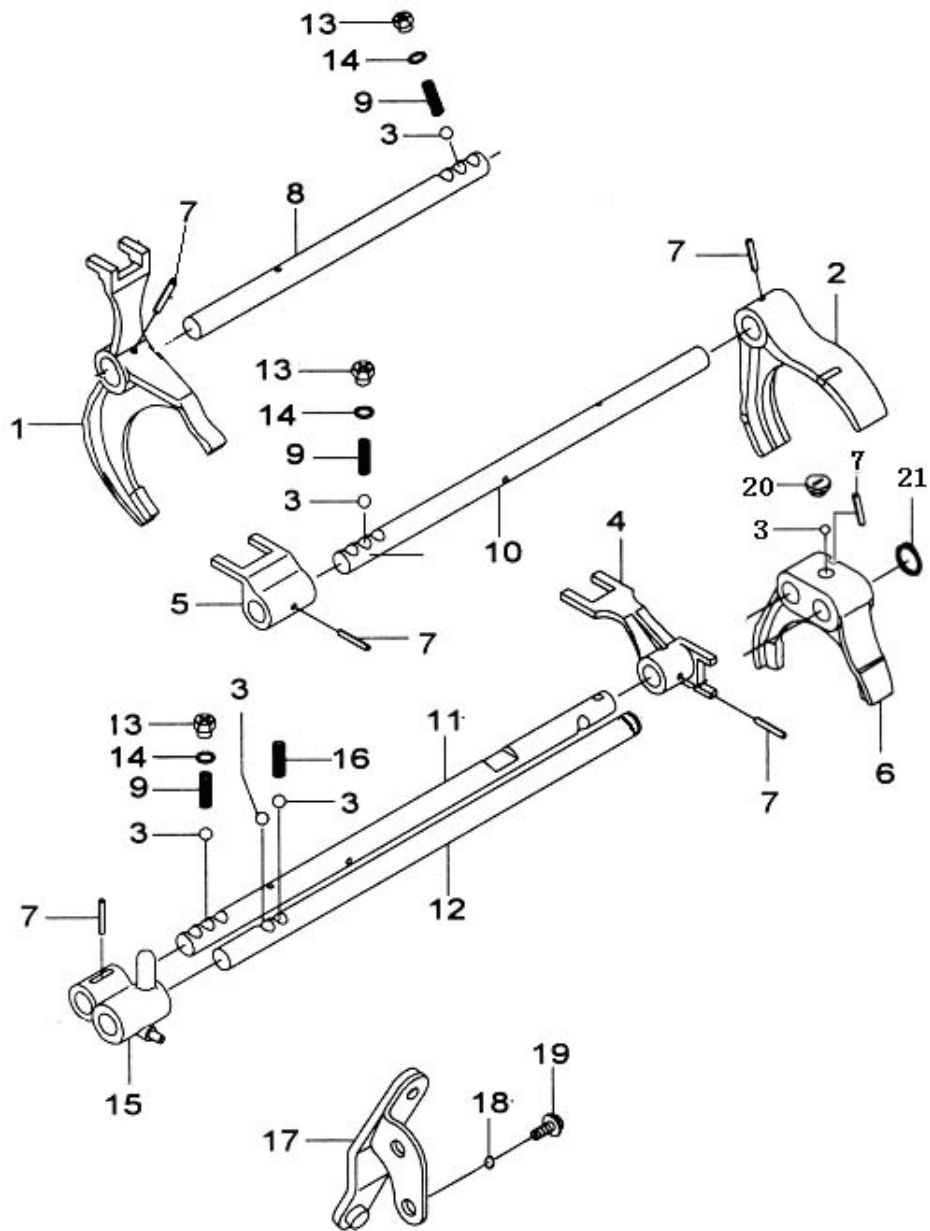


No	ERP CODE	Part number	Name	Quantity
13	02.DLJ.QR512 - 1701258	QR512 - 1701258	Synchronizer waveform washer ring	1
14	02.DLJ.QR512 - 1701260	QR512 - 1701260	4 <sup>TH</sup> gear assy	1
15	02.DLJ.5T07 - 1701110	5T07 - 1701110	Back bearing of input shaft	1
16	02.DLJ.QR512 - 1701285	QR512 - 1701285	Spacer of 5 <sup>TH</sup> gear	1
17	02.DLJ.QR512 - 1701200	QR512 - 1701200	Input shaft assy	1
18	02.DLJ.QR512 - 1701287	QR512 - 1701287	Adjusting washer of rear bearing	Demand
19	02.DLJ.QR512 - 1701280	QR512 - 1701280	5 <sup>TH</sup> gear assy	1
20	QR512 - 1701257	QR512 - 1701257	Synchronizer ring of 3 <sup>TH</sup> &4 <sup>TH</sup> & 5 <sup>TH</sup> gear	1

21	02.DLJ.QR512 - 1701258	QR512 - 1701258	Synchronizer waveform washer ring	1
22	02.DLJ.QR512 - 1701290	QR512 - 1701290	Synchronizer assy of 5 <sup>TH</sup> gear	1
23	02.DLJ.QR512 - 1701254	QR512 - 1701254	Synchronizer spring of 5 <sup>TH</sup> gear	2
24	02.DLJ.QR512 - 1701293	QR512 - 1701293	Synchronizer gear block of 5 <sup>TH</sup> gear	1
25	02.DLJ.QR512 - 1701292	QR512 - 1701292	Synchronizer gear - hub of 5 <sup>TH</sup> gear	1
26	02.DLJ.QR512 - 1701291	QR512 - 1701291	Synchronizer gear - sleeve of 5 <sup>TH</sup> gear	1
27	02.DLJ.QR512 - 1701294	QR512 - 1701294	Synchronizer ring of 5 <sup>TH</sup> gear	1
28	02.DLJ.QR512 - 1701298	QR512 - 1701298	Nut of 5 <sup>TH</sup> gear synchronizer	1
29	02.DLJ.QR512 - 1701710	QR512 - 1701710	Reverse gear	1
30	02.DLJ.5T07 - 1701053	5T07 - 1701053	Ring of reverse gear	1
31	02.DLJ.5T07 - 1701061A	5T07 - 1701061A	Shaft of reverse gear	1
32	02.DLJ.5T07 - 1701052	5T07 - 1701052	Washer of reverse gear shaft	1
33	02.DLJ.5T07 - 1701057A	5T07 - 1701057A	Bolt of reverse gear shaft	1

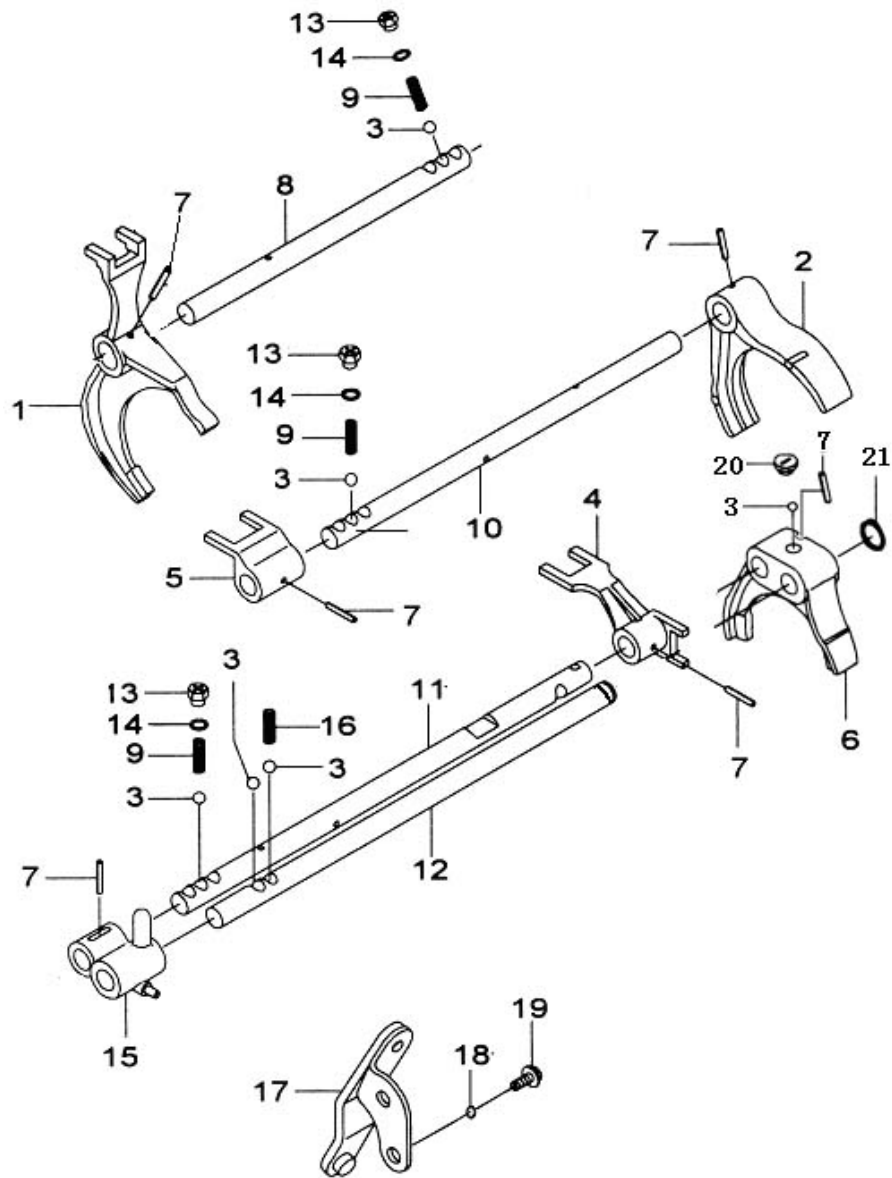


#### 4.SHIFT FORK& SHIFT- FORK SHAFT



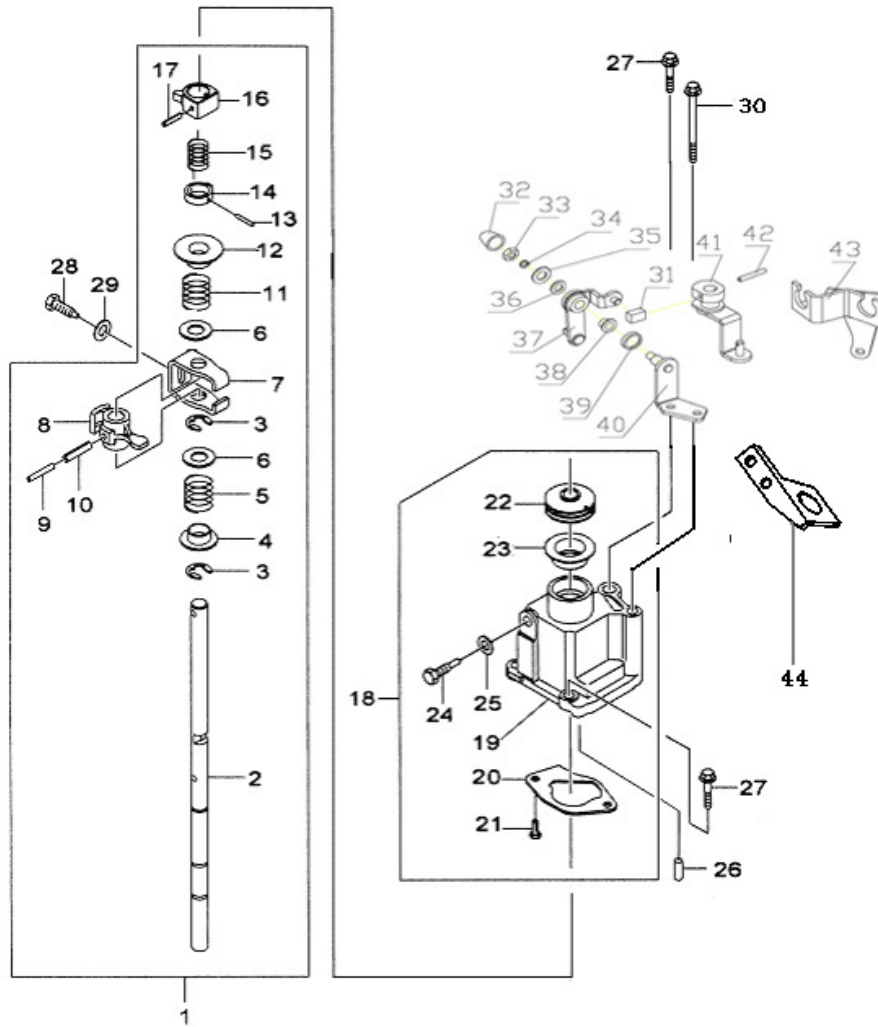
No	ERP CODE	Part number	Name	Quantity
1	02.DLJ.QR512 - 1702311	QR512 - 1702311	Shift fork of 1 <sup>ST</sup> &2 <sup>ND</sup> gear	1
2	02.DLJ.5T07 - 1702041A	5T07 - 1702041A	Shift fork of 3 <sup>RD</sup> &4 <sup>TH</sup> gear	1
3	02.DLJ.308 - 7.9375	308 - 7.9375	Steel ball 7.9375	6
4	02.DLJ.5T07 - 1702042A	5T07 - 1702042A	Shift fork of 5 <sup>TH</sup> gear	1
5	02.DLJ.5T07 - 1702061A	5T07 - 1702061A	Shift fork of 3 <sup>RD</sup> &4 <sup>TH</sup> gear	1
6	02.DLJ.4T08 - 1702042A	4T08A - 1702042A	Stop block	1
7	02.DLJ.QR512 - 1702231	QR512 - 1702231	PIN 4.5x20	1
8	02.DLJ.QR512 - 1702411	QR512 - 1702411	Shift - fork shaft of 1 <sup>ST</sup> &2 <sup>ND</sup> gear	1
9	02.DLJ.5T07 - 1702067	5T07 - 1702067	Shift - fork shaft spring	3

#### 4.SHIFT FORK& SHIFT- FORK SHAFT



No	ERP CODE	Part number	Name	Quantity
10	02.DLJ.QR512 - 1701421	QR512 - 1701421	Shift - fork shaft of 3 <sup>RD</sup> &4 <sup>TH</sup> gear	1
11	02.DLJ.QR512 - 1702431	QR512 - 1702431	Shift - fork shaft of 5 <sup>TH</sup> gear	1
12	02.DLJ.QR512 - 1702441	QR512 - 1702441	Shift - fork shaft of reverse gear	1
13	02.DLJ.5T07 - 1702234	5T07 - 1702234	Shift - fork shaft screw plug	3
14	02.DLJ.5T07 - 1702233	5T07 - 1702233	Washer of screw plug	3
15	02.DLJ.QR512 - 1702341	QR512 - 1702341	Shift fork pin of reverse gear	1
16	02.DLJ.5T07 - 1702068	5T07 - 1702068	Shift block spring	1
17	02.DLJ.5T07 - 1702050A	5T07 - 1702050A	Shift arm	1
18	03.03.95-φ8×16×1 , 5/05	93 - W8	Flat washer 8	2
19	02.DLJ.5T07 - 1702232A	5T07 - 1702232A	Bolt of shift arm	2

## 5.SHIFT CONTROL MACHANISM

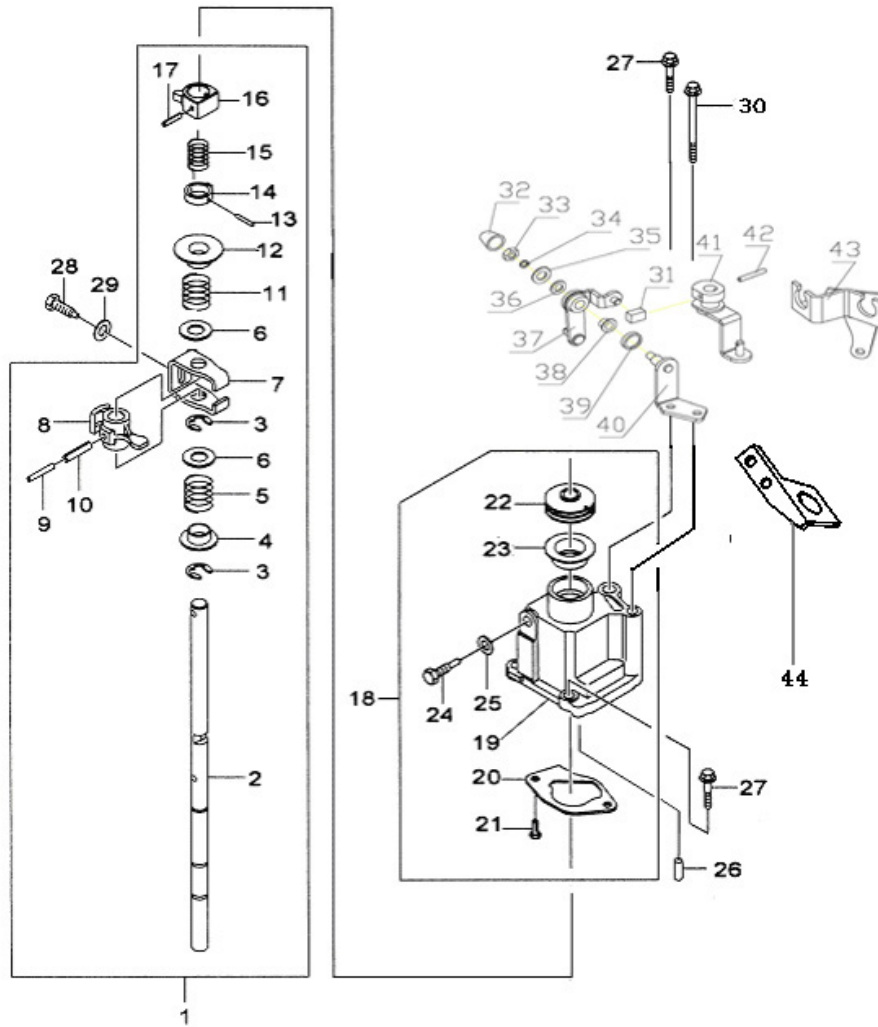


No	ERP CODE	Part number	Name	Quantity
1	02.DLJ.5T07-1702100A	5T07-1702100A	SHIFT-SELECT SHAFT ASSY	1
2	02.DLJ.5T07-1702101A	5T07-1702101A	SHIFT-SELECTING SHAFT	1
3	02.DLJ.QR512-1702214	QR512-1702214	SNAP RING.STOP PLATE.SHIFT INTERLOCK	3
4	02.DLJ.5T07-1702102	5T07-1702102	RELEASE-SPRING SEAT.1ST GEAR&2ND GEAR	1
5	02.DLJ.5T07-1702103	5T07-1702103	RELEASE-SPRING.1ST GEAR&2ND GEAR	1
6	02.DLJ.5T07-1702104	5T07-1702104	SPRING-STOP PLATE	2
7	02.DLJ.5T07-1702107A	5T07-1702107A	STOP PLATE.SHIFT INTERLOCK	1
8	02.DLJ.5T07-1702105A	5T07-1702105A	SHIFT-SELECT ARM.	1
9	02.DLJ.QR512-1702113	QR512-1702113	SPRING PIN 3.5X28	1
10	02.DLJ.5T07-1702106	5T07-1702106	PIN.SHIFT-SELECT ARM.	1
11	02.DLJ.5T07-1702114A	5T07-1702114A	RELEASE-SPRING.5TH GEAR&REVERSE GEAR	1
12	02.DLJ.5T07-1702112	5T07-1702112	RELEASE-SPRING SEAT.5TH GEAR&REVERSE GEAR	1
13	02.DLJ.GB/T879,1-2000	GB/T879.1-2000	PIN 3X22	1
14	02.DLJ.5T07-1702108A	5T07-1702108A	SPRING SEAT.REVERSE GEAR	1

This diagram illustrates the exploded view of a mechanical assembly, with parts numbered 1 through 44. The assembly is organized into two main vertical sections. The left section contains a long shaft (1) with various components mounted along its length, including a pulley (2), a series of washers and spacers (3, 4, 5, 6), a bracket (7), and a pin (10). The right section shows a more complex assembly with a central housing (18) and a series of components (19, 20, 21, 22, 23, 24, 25, 26, 27, 30, 31, 32, 33, 34, 35, 36, 37, 38, 39, 40, 41, 42, 43, 44) that are shown in their relative positions for assembly. The diagram uses standard mechanical drawing conventions, including lines to indicate the assembly path and alignment of parts.

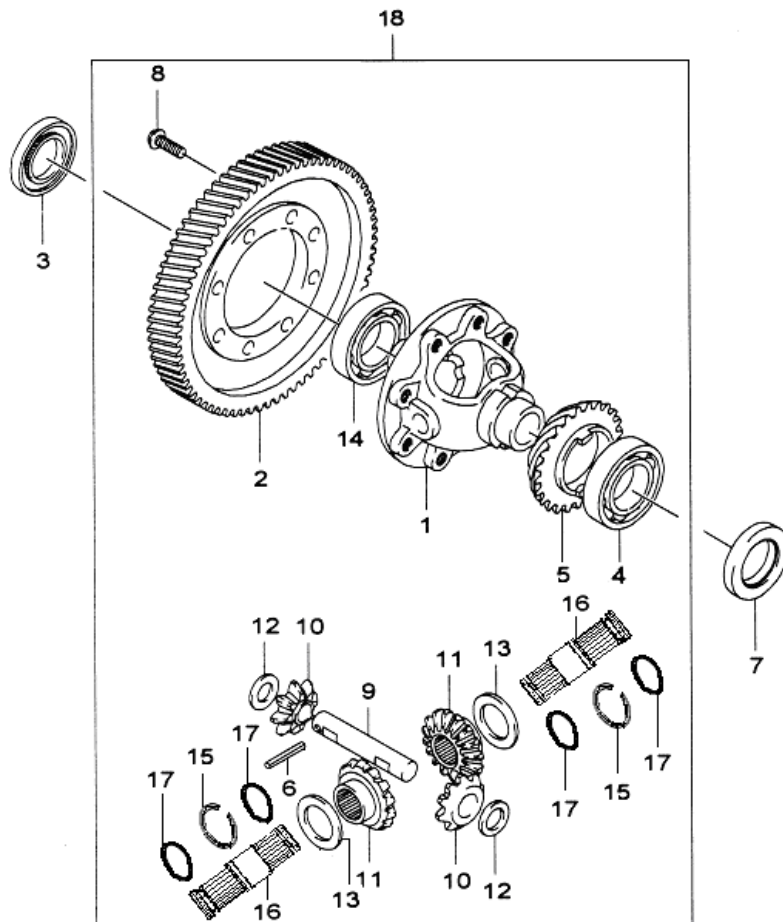
No	ERP CODE	Part number	Name	Quantity
15	02.DLJ.5T07-1702109A	5T07-1702109A	LIMITING SPRING.REVERSE GEAR	1
16	02.DLJ.QR512-1702111A	QR512-1702111A	LIMITING CAM.REVERSE GEAR	1
17	02.DLJ.GB/T879,1-2000	GB/T879.1-2000	PIN 5X22	1
18	02.DLJ.5T07-1702070A	5T07-1702070A	GUIDE CASE ASSY. SHIFT-SELECT SHAFT	1
19	02.DLJ.5T07-1702071A	5T07-1702071A	GUIDE CASE. SHIFT-SELECT SHAFT	1
20	02.DLJ.5T07-1702072	5T07-1702072	STOP PLATE.RELEASE SPRING.5TH@REVERSE	1
21	02.DLJ.GB/T5789-1986	GB/T5789-1986	BOLT AM6X12	2
22	02.DLJ.QR512-1702227	QR512-1702227	OIL SEAL.SHIFT-SELECT SHAFT	1
23	02.DLJ.5T07-1702062	5T07-1702062	ANTI-DUST COVER. SHIFT-SELECT SHAFT	1
24	02.DLJ.5T07-1702073	5T07-1702073	LIMITING BOLT.REVERSE GEAR	1
25	02.DLJ.QR512-1702229	QR512-1702229	WASHER.LIMITING BOLT.REVERSE GEAR	1
26	02.DLJ.GB/T119-2000	GB/T119-2000	PIN B 6X12	2
27	02.DLJ.GB/T5789-1986	GB/T5789-1986	BOLT AM 8X25	4
28	02.DLJ.5T07-1702065A	5T07-1702065A	LIMITING BOLT.SHIFT	1

## 5.SHIFT CONTROL MACHANISM



No	ERP CODE	Part number	Name	Quantity
29	02.DLJ.QR512-1702229	QR512-1702229	WASHER.STOP SCREW.REVERSE GEAR	1
30	02.DLJ.GB/T5789-1986	GB/T5789-1986	BOLT AM 8X80	1
31	02.DLJ.5T07-1702063	5T07-1702063	PUSHING BLOCK.SHIFT	1
32	02.DLJ.5T07-1702062	5T07-1702062	ANTI-DUST COVER.SHIFT-SELECT SHAFT	1
33	03.02.6170-M8/05	6170-M8	NUT M8	1
34	03.05. 93-Φ8/05	93-Φ8	Spring washer 8	1
35	02.DLJ.5T07-1702046	5T07-1702046	BIG WASHER.SHIFT ARM	1
36	02.DLJ.5T07-1702045	5T07-1702045	SMALL WASHER.SHIFT ARM	1
37	02.SV1100.05.02.02	SV1100.05.02.02.00	SHIFT ARM.COMP	1
38	02.SV1100.05.02.0003	SV1100.05.02.00.03	Copper bush	1
39	02.DLJ.5T07-1702047	5T07-1702047	ANTI-DUST WASHER.SHIFT ARM	1
40	02.DLJ.5T07-1702220	5T07-1702220	SUPPORT ASSY.SHIFT ARM	1
41	02.SV1100.05.02.04	SV1100.05.02.04.00	SHIFT ARM COMP	1
42	02.DLJ.GB/T879.1-2000	GB/T879.1-2000	PIN 5X28	1
43	02.SV1100.05.02.01	SV1100.05.02.01.00	Shifter soft shaft bracket	1
44	02.DLJ.QR512-1701656	QR512-1701656	LIFTING HOOK	1

## 6.DRIVEN GEAR ASSY.SPEED REDUCER



No	ERP CODE	Part number	Name	Quantity
1	02.DLJ.4T08A2-1701308	4T08A2-1701308	Differential case	1
2	02.DLJ.4T08A-1701604	4T08A-1701604	DRIVEN GEAR.SPEED REDUCER	1
3	02.DLJ.5T07-1701010	5T07-1701010	Differential seal assy (left)	1
4	02.DLJ.5T07-1701310	5T07-1701310	FRONT BEARING 6007	1
5	02.DLJ.QR512-1701604	QR512-1701604	DRIVING GEAR.ODOMETER	1
6	02.DLJ.GB/T879,1-2000	GB/T879,1-2000	Needle bearing D5×36	1
7	02.DLJ.5T07-1701090	5T07-1701090	Differential seal assy (right)	1
8	02.DLJ.5T07-1701309	5T07-1701309	Bolt AM10×1.25×23	8
9	02.DLJ.5T07-1701303	5T07-1701303	Planet gear shaft	1
10	02.DLJ.QR512-1701621	QR512-1701621	Differential Planet gear	2
11	02.DLJ.QR512-1701631	QR512-1701631	Planet gear bush	2
12	02.DLJ.5T07-1701302	5T07-1701302	Planet gear washer	2
13	02.DLJ.5T07-1701306	5T07-1701306	Half axle adjusting washer	2
14	02.DLJ.5T07-1701320	5T07-1701320	REAR BEARING 6207	1
15	02.DLJ.5T12H-1709506	5T12H-1709506	limited-thrust ring	2
16	02.DLJ.4T08A2-1701611	4T08A2-1701611	output shaft	2
17	02.DLJ.MQC4-2303016	MQC4-2303016	RETAINER RING	4
18	02.DLJ.4T08A2-1701600	4T08A2-1701600	Differential assy	1