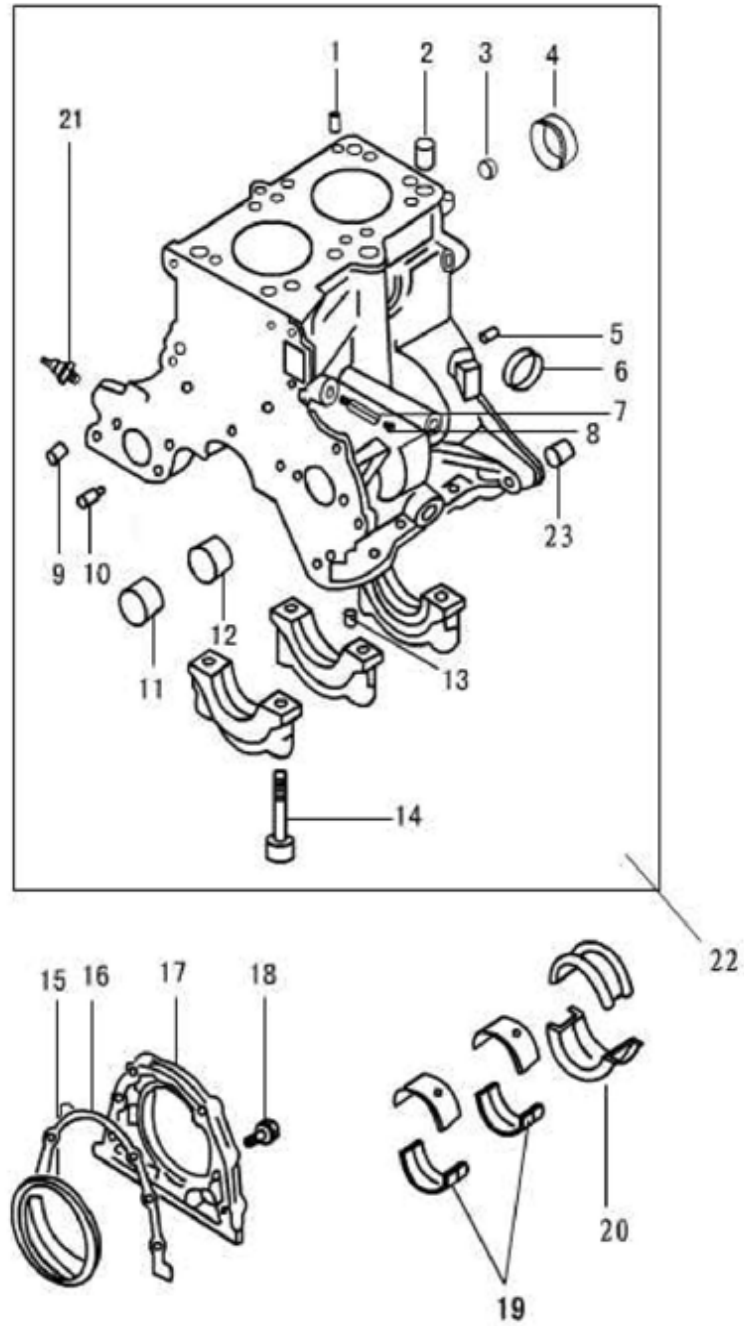


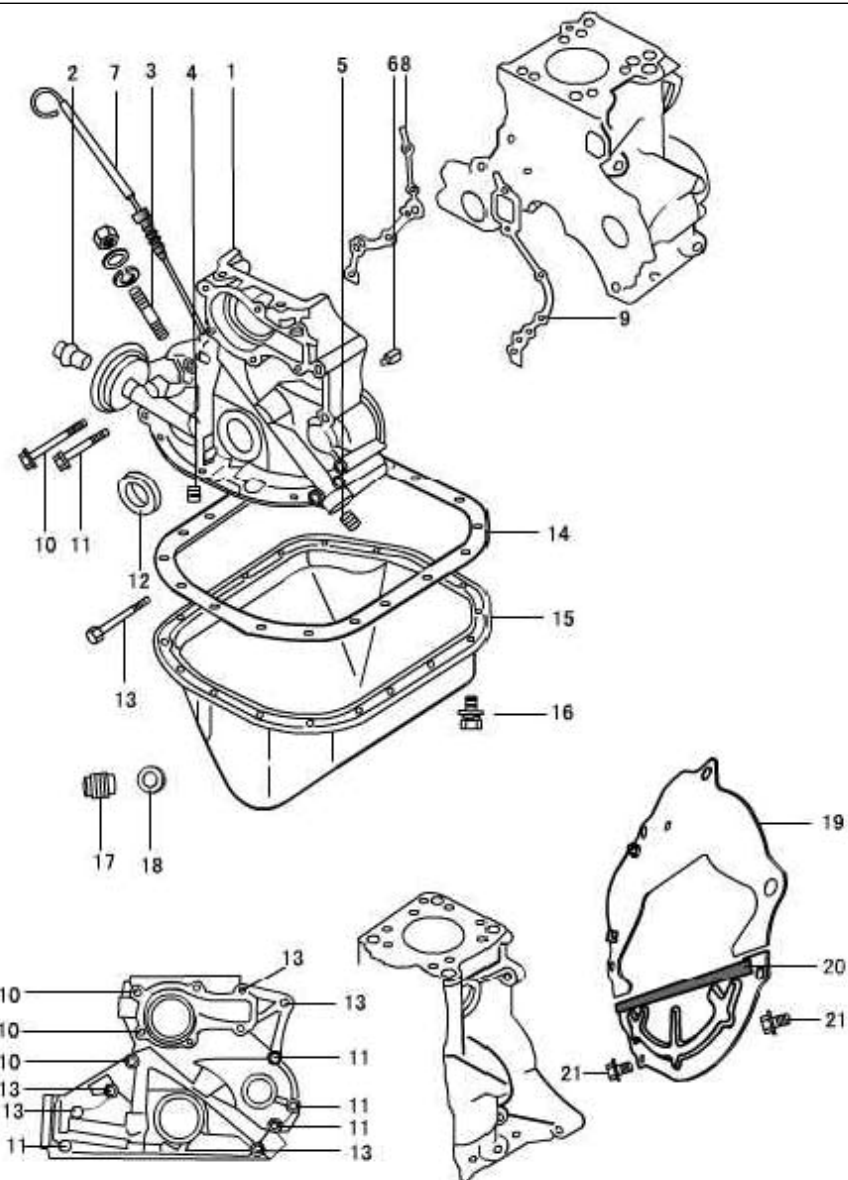
1 CYLINDER BLOCK PART



NO	CODE NAME	ERP CODE	DESCRIPTION	QTY
1	270Q-02009	02.DLJ.270Q-02009	oil feed plug	1

1 CYLINDER BLOCK PART				
NO	CODE NAME	ERP CODE	DESCRIPTION	QTY
2	LJ462Q-1-1000028D	02.DLJ.LJ462Q-1-1000028D	Cylinder head locating dowel	2
3	QTB55	02.DLJ.QTB55 Φ14X14	Plug φ10.5x7	1
4	QTB54	02.DLJ.QTB54 8X9	freeze plug φ40	1
5	GB/T119-1986	02.DLJ.GB/T119-1986	pinφ16x8	2
6	QTB542	02.DLJ.QTB542 Φ30	freeze plug φ30	3
7	270Q-02013	02.DLJ.270Q-02013	tie-in pipe of drove valve	1
8	QTB28	02.DLJ.QTB28	hexagon-headed taper bolt npt1/4	1
9	QTB42	02.DLJ.QTB42 Φ11X12	hollow-swage locating pin φ11x12	2
10	270Q-02004	02.DLJ.270Q-02004	jetting pipe	1
11	270-02003	02.DLJ.270Q-02003	front bearing of balancing shaft	2
12	270Q-02011	02.DLJ.270Q-02011	rear bearing of balancing shaft	2
13	QTB54	02.DLJ.QTB54 8X9	calathiform plug8x9	1
14	270Q-02102	02.DLJ.270Q-02102	main bearing cap bolt	6
15	QTB53A	02.DLJ.QTB53A FB35X50X8	crankshaft rear oil seal with unidirectional flow around fb60x78x7	1
16	270Q-02008	02.DLJ.270Q-02008	rear oil seal housing gasket	1
17	270Q-02007A	02.DLJ.270Q-02007A	rear oil seal housing	1
18	LJ462Q-1-1000082D	02.DLJ.LJ462Q-1-1000082D	flywheel bolt	4
19	270Q-04007	02.DLJ.270Q-04007	crankshaft bearing bushing	4
20	270Q-04008	02.DLJ.270Q-04008	crankshaft thrush bearing bushing	2
21	270Q-02006C	02.DLJ.270Q-02006C	oil pessure switch	1
22	270Q-0210D	02.DLJ.270Q-0210D	cylinder block and bearing cap assembly	1
23	QTB42	02.DLJ.QTB42 Φ11X12	hollow-swage locating pin φ13x15.5	2

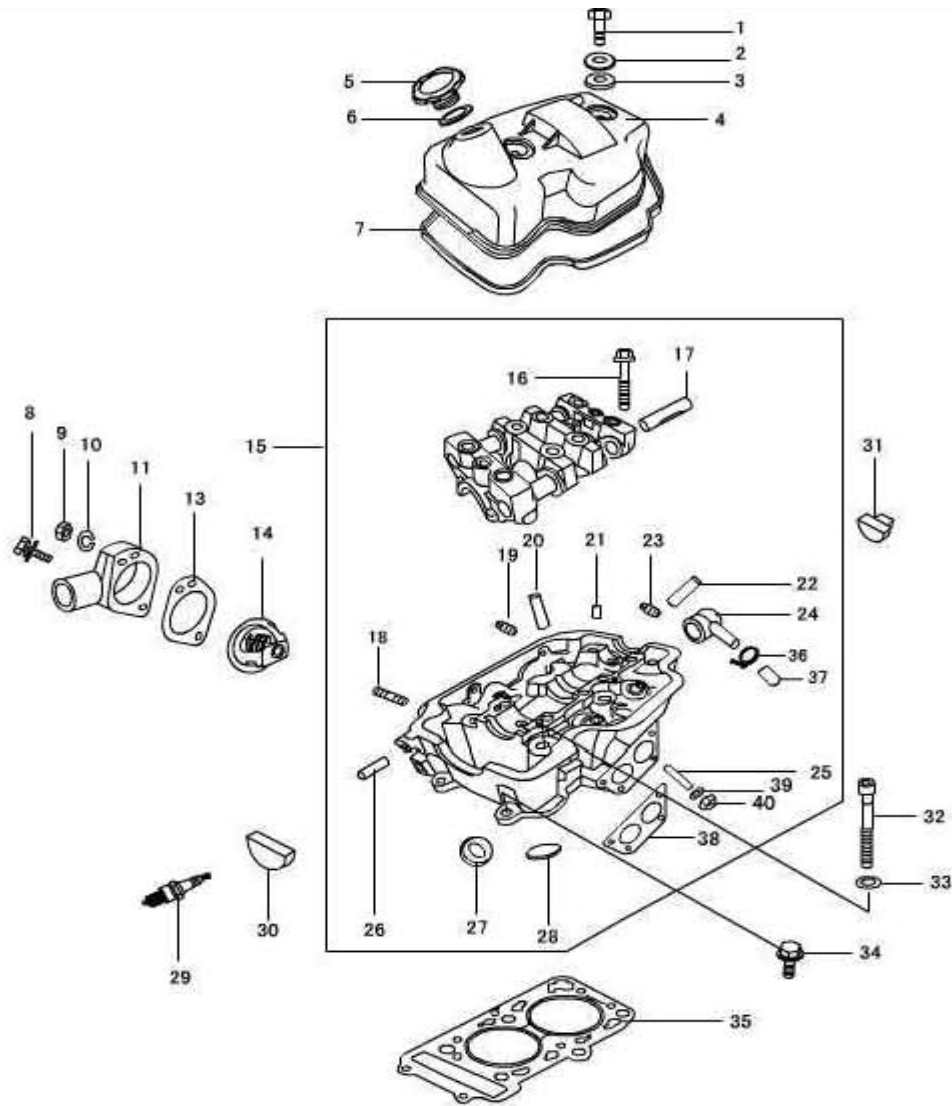
2 SPROCKET COVER AND OIL PAN PART



NO	CODE NAME	ERP CODE	DESCRIPTION	QTY
1	276Q-02201	02.DLJ.276Q-02201	sprocket cover	1
2	270Q-02202	02.DLJ.270Q-02202	oil filter threaded sleeve	1
3	GB/T900-88	02.DLJ.GB/T900-88 AGM8-M8X22	taper bolt agm8-m8x22-8.8	1
4	QTB23	02.DLJ.QTB23 NTP1/4	hexagon-headed taper bolt ntp1/4	1
5	QTB23	02.DLJ.QTB23 NTP1/4	hexagon-headed taper bolt ntp3/8	1

2 SPROCKET COVER AND OIL PAN PART				
NO	CODE NAME	ERP CODE	DESCRIPTION	QTY
6	270Q-02004	02.DLJ.270Q-02004	jetting pipe	1
7	LJ276MT-2-02400	02.DLJ.LJ276MT-2-02400	dipstock	1
8	-2001	02.DLJ.2001	left gasket of sprocket cover	1
9	-2002	02.DLJ.2002	right gasket of sprocketcober	1
10	QTB10	02.DLJ.QTB10 M6X10	hexagom-headed bolt with edge m8x88	3
11	QTB10	02.DLJ.QTB10 M6X10	hexagom-headed bolt with edge m8x68	4
12	QTB53A	02.DLJ.QTB53A FB35X50X8	crankshaft front oil seal with unidirectional flow around fb35x50x8	1
13	QTB10	02.DLJ.QTB10 M6X10	hexagon-headed bolt with edge m8x78	3
14	270-02005A	02.DLJ.270-02005A	oil pan gasket	1
15	LJ276MT-2-02300	02.DLJ.LJ276MT-2-02300	oil pan assembly	1
16	GB/T9074.17-1988	02.DLJ.GB/T9074,17-1988 M6X12	bolt assembly m6x12	18
17	QTB24	02.DLJ.QTB24	drain plug m14x1.5	1
18	270Q-02303B	02.DLJ.270Q-02303B	drain plug gashet	1
19	276MT-2-02500	02.DLJ.276MT-2-02500	backing plate	1
20	LY-1701220-01	02.DLJ.LY-1701220-01	tird and forth gear assy	1
21	QTB10	02.DLJ.QTB10 M6X10	hexagon-headed bolt with edge m6x10	2

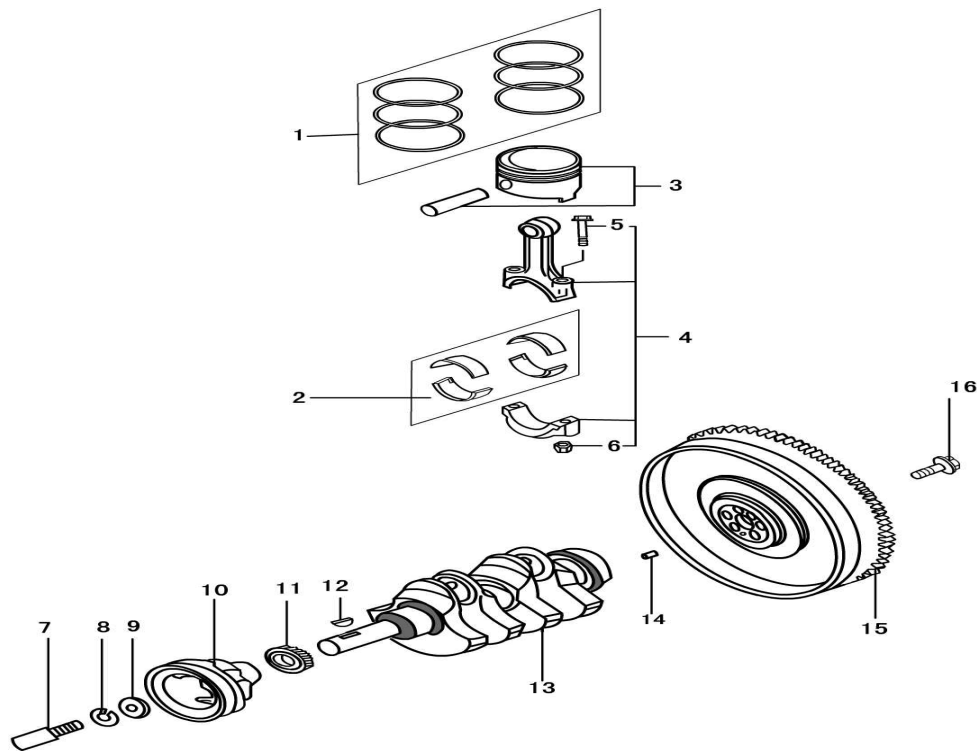
3 cylinder head part



NO.	CODE NAME	ERP CODE	DESCRIPTION	QTY
1	GB/T5782-1986	02.DLJ.GB/T5782-1986	bolt m8x40	2
2	270Q-01009	02.DLJ.270Q-01009	washer of cylinder head cover bolt	2
3	270Q-01011	02.DLJ.270Q-01011	rubber pad of cylinder head cover bolt	2
4	270Q-01300	02.DLJ.270Q-01300	cylinder head cover assembly	1
5	270Q-01400B	02.DLJ.270Q-01400B	filler cap assembly	1
6	270Q-01402	02.DLJ.270Q-01402	filler cap rubber washer	1
7	270Q-01012B	02.DLJ.270Q-01012B	seal ring of cylinder head cover	1
8	9074.17 - M8X30	03.01.5782-M8x30/05	Unit bolt M8x30	1

NO.	CODE NAME	ERP CODE	DESCRIPTION	QTY
9	QTB15-M8	03.02.2842-M8/05	Nut M8 - 8	5
10	93 - $\phi 8$	03.04.93- $\phi 8/05$	Spring washer $\phi 8$	5
11	270Q - 01017	02.DLJ.270Q-01017	Thermostat housing	1
13	270Q - 01016	02.DLJ.270Q-01016	Thermostat gasket	1
14	270Q - 01015	02.DLJ.270Q-01015	Thermostat	1
15	270Q - 01100	02.DLJ.270Q-01100	Cylinder head and camshaft bearing part	
16	270Q - 01109	02.DLJ.270Q-01109	Camshaft bearing bushing cap bolt	8
17	270Q - 01007	02.DLJ.270Q-01007	Valve rocker arm shaft	4
18	898 - M8X25	02.DLJ.GB/T898-1988 AGM8-M8X25	Stud AGM8 \times 25 - 8.8	4
19	899 - M8X28	02.DLJ.GB/T898-1988 AGM8-M8X28	Stud AGM8 \times 28 - 8.8	1
20	270Q - 01104	02.DLJ.270Q-01104	Inlet valve guide	2
21	QTB40- $\phi 6\times 14$	02.DLJ.172MM-090008	Locating pin $\phi 6\times 14$	6
22	270Q - 01105	02.DLJ.270Q-01105	Exhaust valve guide	2
23	899 - B	02.DLJ.GB/T898-1988	bolt	1
24	270Q - 01023A	02.DLJ.01023A	Hexagon -headed taper plug	1
25	898 - M8X20	02.DLJ.GB/T898-1988 M8X20	Stud AGM8-M8 \times 20 - 8.8	4
26	270Q - 01018	02.DLJ.270Q-01018	Minor water pipe	1
27	270Q - 01102	02.DLJ.270Q-01102	Intake valve seat	2
28	270Q - 01103B	02.DLJ.270Q-01103B	Exhaust valve seat	2
29	270Q - 01019B	02.DLJ.270Q-01019B	Water Temperature sender unit	1
30	270Q - 01013	02.DLJ.270Q-01013	Front Semi-Circle Oil Seal	1
31	270Q - 01014	02.DLJ.270Q-01014	Rear Semi-Circle Oil Seal	1
33	GTB30- $\phi 21\times\phi 11\times 3$	03.08.91- $\phi 21\times 3/05$	head bolt washer $\phi 21\times\phi 11\times 3$	6
34	9074.17 - M8X28	03.01.5782-M8 \times 28/05	Bolt assembly M8 \times 28	2

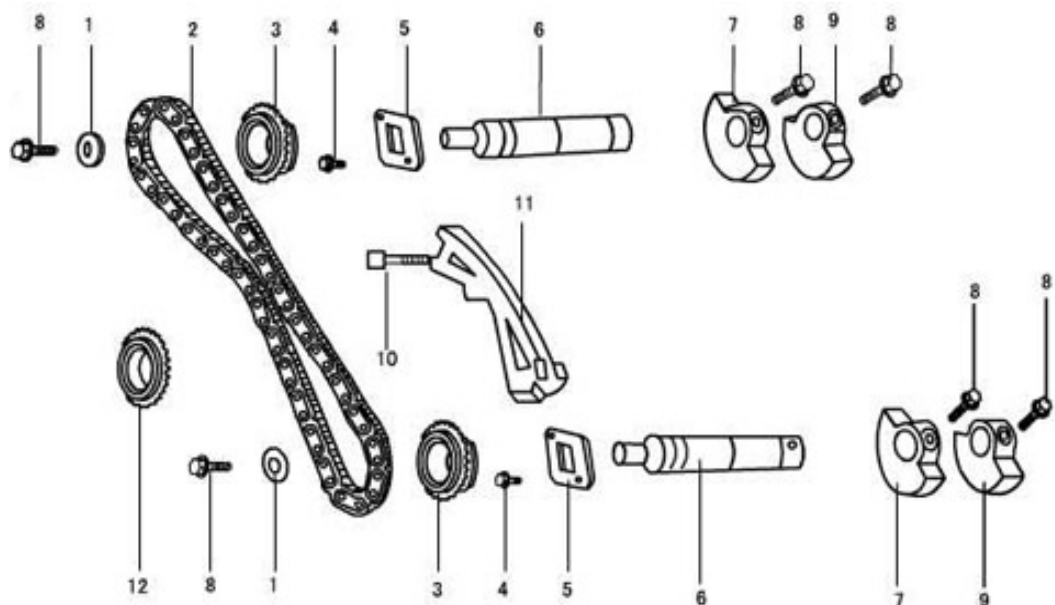
4 PISTON , CONNETING ROD AND CRANKSHAFT PART



No.	Code name	ERP CODE	Description	Qty
1	276Q - 03002	02.DLJ.276Q-03002	Piston ring (1)	2
	276Q - 03003	02.DLJ.276Q-03003	Piston ring (2)	2
	276Q - 03200	02.DLJ.276Q-03200	Piston ring (3)	2
2	270Q - 03006	02.DLJ.270Q-03006	Connecting rod bearing	4
3	276Q - 03001	02.DLJ.276Q-03001	Piston	2
	276Q - 03004B	02.DLJ.276Q-03004B	Piston Pin	2
4	270Q - 03100	02.DLJ.270Q-03100	Connecting rod assembly(1)	2
			Connecting rod assembly(2)	2
5	270Q - 03103	02.DLJ.270Q-03103	Connecting rod bolt	4
6	270Q - 03104	02.DLJ.270Q-03104	Connecting rod nut	4
7	270Q - 04001	02.DLJ.270Q-04001	front pulley bolt	1
8	859 - SW12	03.04.93-φ12/05	Spring washer 12	1

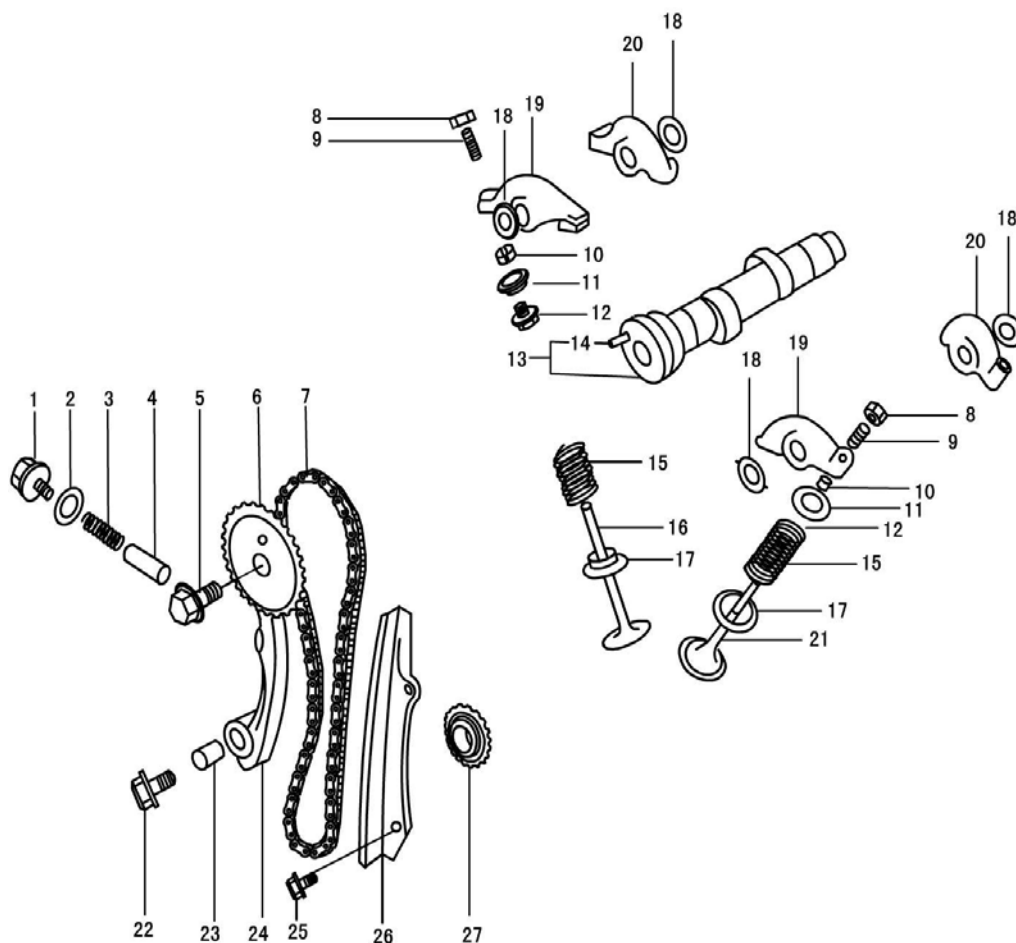
9	270Q - 04002	02.DLJ.270Q-04002	Washer	1
10	270Q - 04003	02.DLJ.270Q-04003	Crankshaft belt pulley	1
11	270Q - 04004A	02.DLJ.270Q-04004A	Driven bevel gear	1
12	QTB44-4X19	02.DLJ.QTB44	Woodruff key4×19	2
13	276Q - 04006B	02.DLJ.276Q-04006B	Crankshaft	1
14	LJ462Q1 - 1000135D	02.DLJ.LJ462Q1-1000135D	Locating pin of fly wheel	1
15	LJ368 - 1005011	02.DLJ.LJ368-1005011	Ring gear assy of fly wheel	1
16	LJ462Q - 1 - 1005014D	02.DLJ.LJ462Q-1-1005014D	flywheel bolt	6

5 BALANCING SHAFT PART



No.	Code name	ERP CODE	Description	Qty
1	QTB30-φ24×φ8.5×3	02.DLJ.QTB30	Thick washer φ24×φ8.5×3	2
	270Q - 04400	02.DLJ.270Q-04400	Balancing chain assembly	1
3	270Q - 04310A	02.DLJ.270Q-04310A	Balancing shaft sprocket assembly	2
4	QTB10-M6×10	02.DLJ.QTB10-M6X10	Hexagon-headed bolt with edge M6×10	4
5	270Q - 04301	02.DLJ.270Q-04301	Baffle plate of Balancing shaft	2
6	270Q - 04302A	02.DLJ.270Q-04302A	Balancing shaft	2
7	270Q - 04303	02.DLJ.270Q-04303	Front balancing weight	2
8	270Q - 04305	02.DLJ.270Q-04305	Balancing weight bolt	6
9	270Q - 04304	02.DLJ.270Q-04304	Rear balancing weight	2
10	QTB10-M6×45	02.DLJ.QTB10-M6X45	Hexagon-headed bolt with edge M6×45	2
11	270Q - 04200B	02.DLJ.270Q-04200B	Guide pad assembly of balancing chain	1
12	270Q - 04012A	02.DLJ.270Q-04012A	Cam chain drive sprocket	1

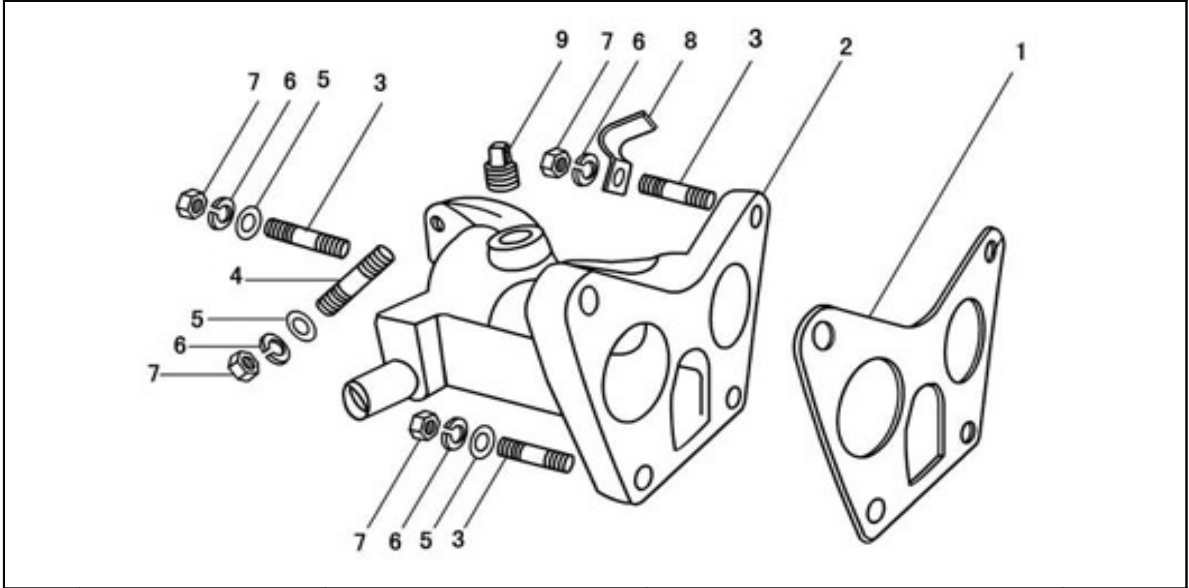
6 CAMSHAFT AND CHAIN TRAIN PART



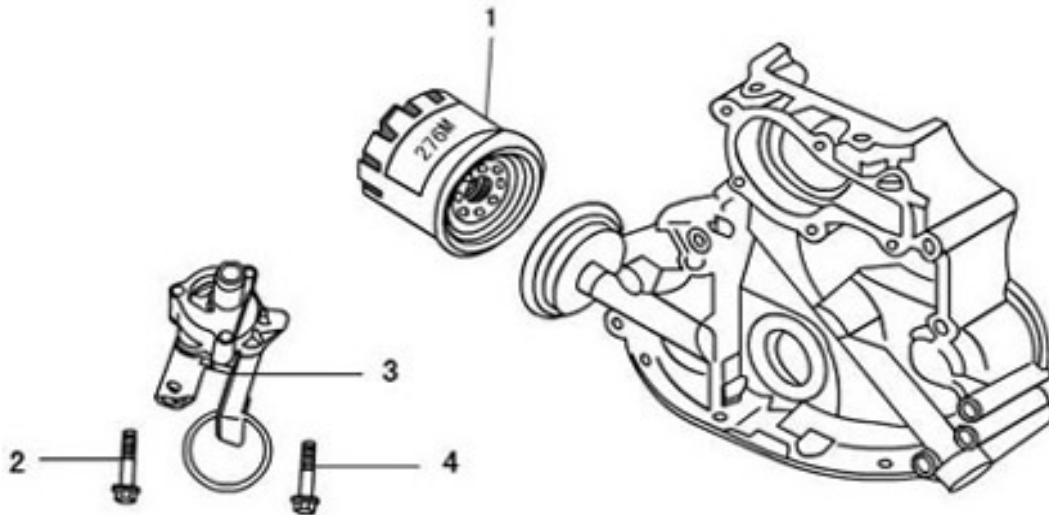
No.	Code name	ERP CODE	Description	Qty
1	270Q - 05400	02.DLJ.270Q-05400	Bolt assembly	1
2	270Q - 05007	02.DLJ.270Q-05007	Washer	1
3	270Q - 05005A	02.DLJ.270Q-05005A	Tensioning spring	1
4	270Q - 05004	02.DLJ.270Q-05004	Tensioning spring plate	1
5	QTB13- M12×1.25×30	02.DLJ.QTB13	Small hexagon-headed bolt with edge M12×1.25×30	1
6	270Q - 05002A	02.DLJ.270Q-05002A	Camshaft timing sprocket wheel	1
7	270Q - 05100	02.DLJ.270Q-05100	Timing chain assembly	1
8	270Q - 01502	02.DLJ.270Q-01502	Valve clearance adjusting nut	4
9	270Q - 01501	02.DLJ.270Q-01501	Valve clearance adjusting bolt	4
10	270Q - 01004	02.DLJ.270Q-01004	Valve locker	8
11	270Q - 01003	02.DLJ.270Q-01003	Retainer	4
12	270Q - 01200	02.DLJ.270Q-01200	Stem seal	4
13	276Q - 05001	02.DLJ.276Q-05001	Camshaft	1
14	QTB40- φ6×14	02.DLJ.QTB40	Dowel pin φ6×14	1
15	276Q - 01002A	02.DLJ.276Q-01002A	Valve spring	4

[illegible]

7 INTAKE MANIFOLD PART

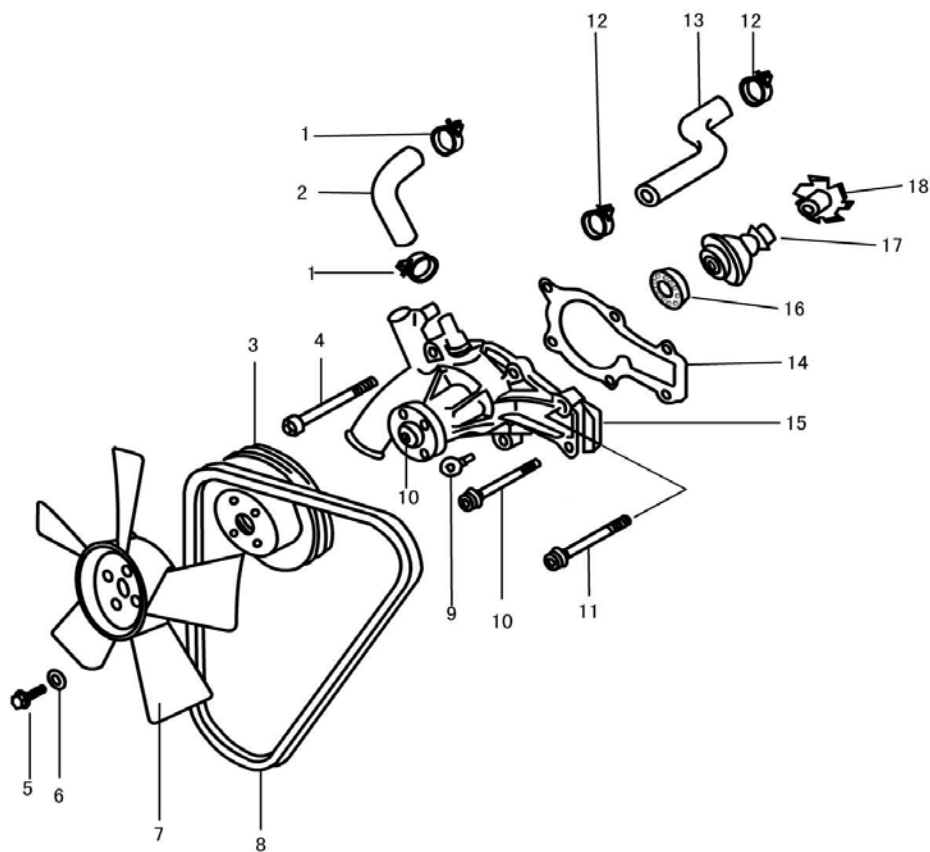
[illegible]

8 OIL FILTER AND OIL PUMP PART



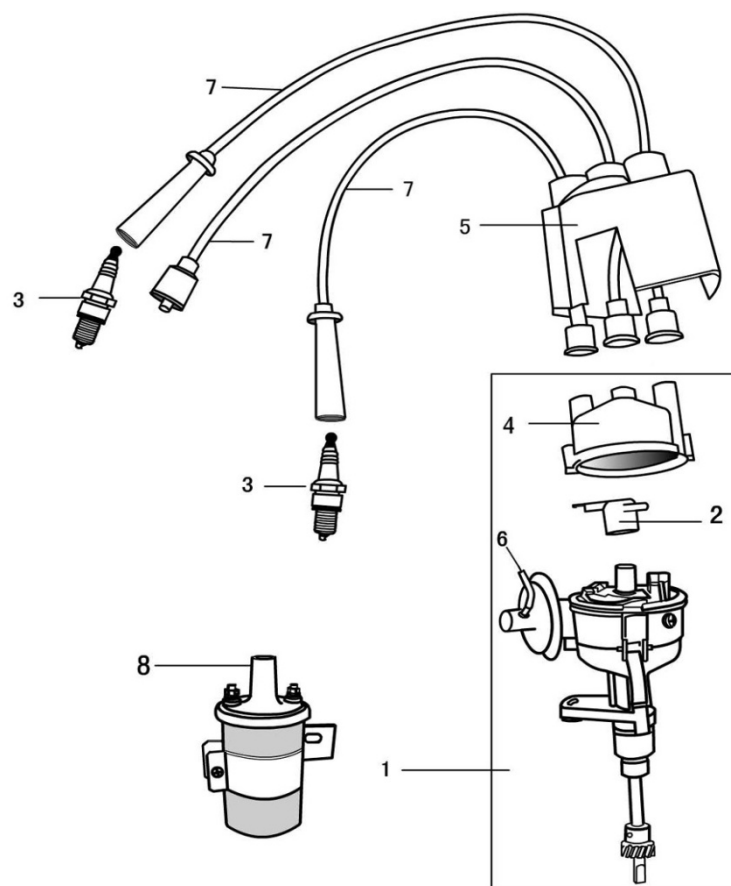
No.	Code name	ERP CODE	Description	Qty
1	270Q - 17000	02.DLJ.270Q-17000	Oil Filter	1
2	9074.17 - M6X48	02.DLJ.9074-M6X48	Bolt assembly M6×48	2
3	LJ276MT - 2 - 16000	02.DLJ.LJ276MT-2-16000	Oil pump	1
4	9074.17 - M6X53	02.DLJ.9074-M6X53	Bolt assembly M6×53	1

9 WATER PUMP AND FAN PART



No.	Code name	ERP CODE	Description	Qty
1	ZB/TT32005.1 - 88	02.DLJ.ZB/TT32005.1	Hose clamp	2
2	270Q - 19011	02.DLJ.270Q-19011	Rubber pipe (2)	1
3	270Q - 19013	02.DLJ.270-19013	water pump pulley	1
4	QTB10-M8×88	02.DLJ.QTB10-M8X88	Hexagon-headed bolt with edge M8×88	2
5	9074.15 - M6X20	02.DLJ.9074-M6X20	Hexagon head bolt M6×20	4
6	QTB32-7.5	02.DLJ.QTB32	Washer 7.5	4
7	276Q - 19200	02.DLJ.276Q-19200	Fan assembly	1
8	QTB93A-AV10X845	02.DLJ.QTB93A	Fan belt AV10×845	1
9	QTB10-M8×23	02.DLJ.QTB10-M8X23	Hexagon-headed bolt with edge M8×23	2
10	270Q - 19002B	02.DLJ.270Q-19002B	bolt	1
11	QTB10-M8×78	02.DLJ.QTB10-M8-78	Hexagon-headed bolt with edge M8×78	2
12	ZB/TT32005.1 - 88	02.DLJ.ZB/TT32005.1	Hose clamp	2
13	LJ276MT - 2 - 19009	02.DLJ.LJ276MT	Rubber pipe (1)	1
14	276Q - 19001	02.DLJ.276Q-19001	Water pump gasket	1
15	276Q - 19100	02.DLJ.276Q-19100	Water pump	1
16	276 - E60101	02.DLJ.276-E60101	Roller bearing E60101	2
17	270Q - F12 - 00	02.DLJ.270Q-F12-00	Water seal	1
18	276Q - 19003	02.DLJ.276Q-19003	Impeller	1

10 DISTRIBUTOR AND ITS LINE UNIT



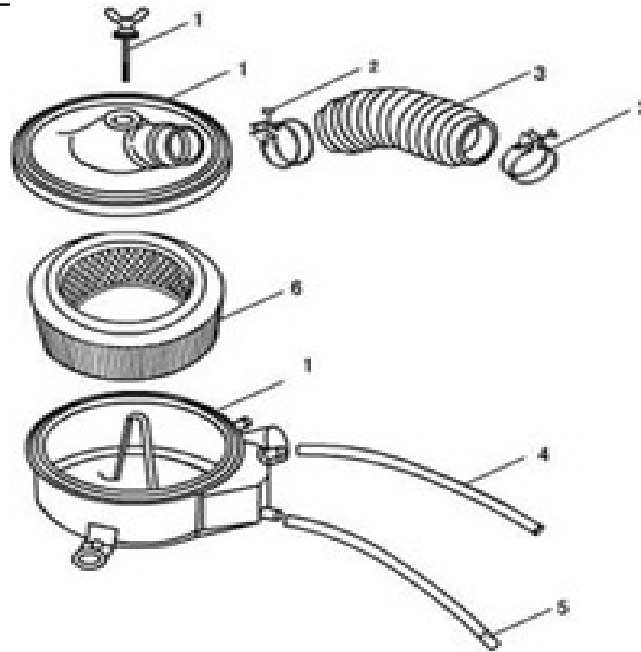
No.	Code name	ERP CODE	Description	Qty
1	270Q - 23510W	02.DLJ.270Q-23510W	Distributor assembly (non contact)	1
2	FDQ - 60000	02.DLJ.FDQ-60000	Rotor	1
3	7825 - SP	02.DLJ.7825-SP	Spark plug	2
4	FDQ - 1 - 50000	02.DLJ.FDQ-1-50000	Distributor cap assembly	1
5	270Q - 23901	02.270Q-23901	Distributor protective cover	1
6	LJ276MT - 2 - 23501	02.DLJ.LJ276MT-2-23501	Vacuum rubber tube	1
7	LJ276M - 23910F	02.DLJ.LJ276M-23910F	High – tension leads	1
8	LJ462Q - 1 - 3705010DW	02.DLJ.LJ462Q-1-3705010DW	Ignition coil	1

11 CARBURETOR PART



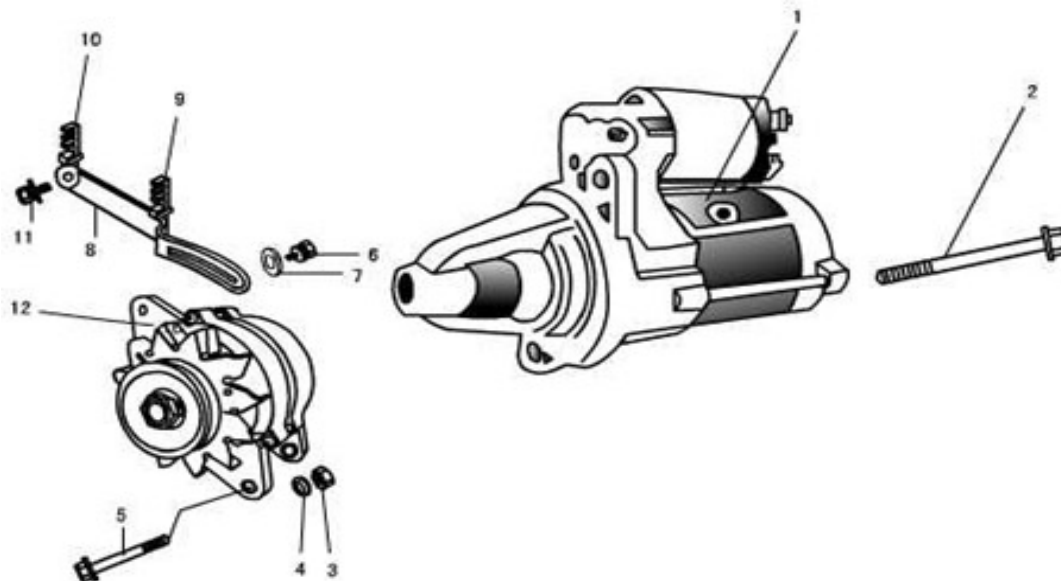
No.	Code name	ERP CODE	Description	Qty
1	270Q - 06004	02.DLJ.270Q-06004	Carburetor gasket	2
2	270Q - 06003	02.DLJ.270Q-06003	Carburetor insulator	1
3	276Q - 13000	02.DLJ.276Q-13000	Carburetor	1
4	JB12D - H	02.DLJ.JB12D-H	Electric petrol pump	1

12 AIR FILTER AND PIPE LINE PART



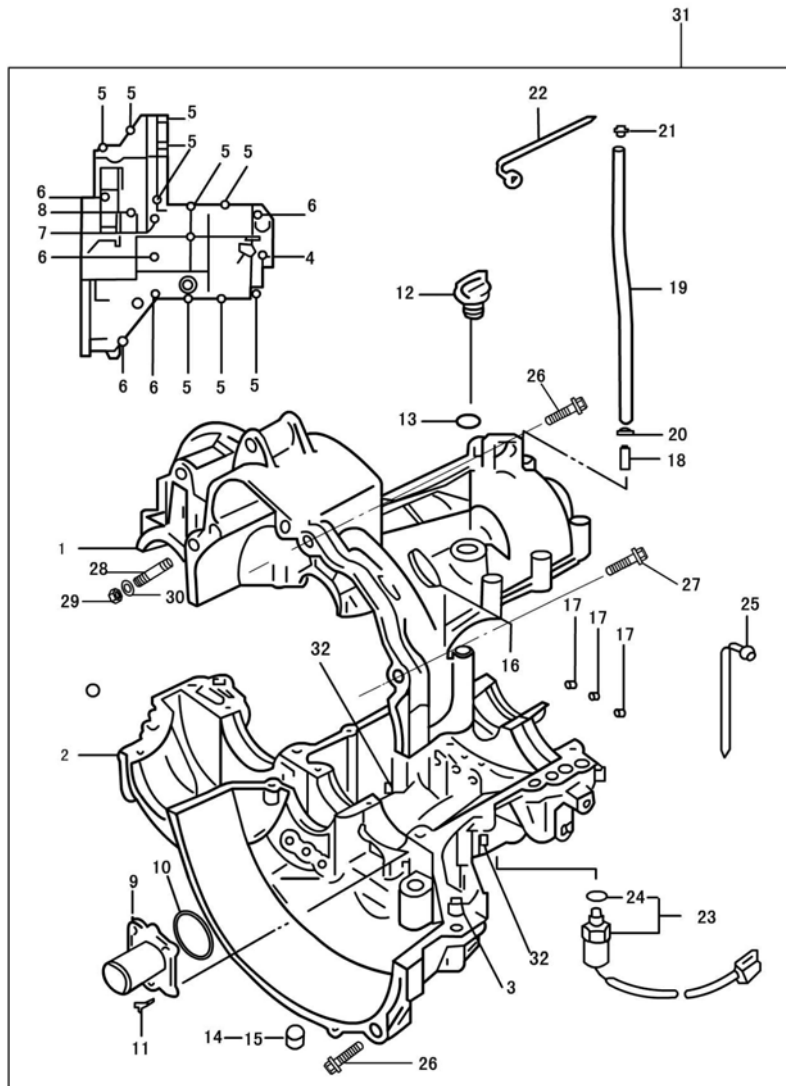
No.	Code name	ERP CODE	Description	Qty
1	LJ276MT - 2 - 07100F	02.DLJ.LJ276MT-2-07100F	Air filter housing	1
2	QK1706 - 03	02.DLJ.QK1706-03	Flexible hose clamp	2
3	LJ276MT - 2 - 07001F	02.DLJ.LJ276MT-2-07001F	Flexible intake hose	1
4	LJ276MT - 2 - 07002F	02.DLJ.LJ276MT-2-07002F	Rubber breathing pipe	1
5	270Q - 07003	02.DLJ.270Q-07003	Storing dust pipes	1
6	QK1706 - 05	02.DLJ.QK1706-05	air filter	1

13 STARTER,ALTERNATOR AND THEIR FASTENING PIECE



No.	Code name	ERP CODE	Description	Qty
1	LJ368Q - 3708010	02.DLJ.LJ368Q-3708010	Starter	1
2	LJ368Q - 1000068	02.DLJ.LJ368Q-1000068	Starter clamp bolt	2
3	QTB15-M8	02.DLJ.QTB15-M8	Hexagon nut M8 - 8	1
4	93 - SW8	02.DLJ.93-SW8	Spring washer 8	1
5	270Q - 02203A	02.DLJ.270Q-02203A	Adjusting bolt	1
6	9074.15 - M8X25	02.DLJ.9074-M8X25	Bolt M8×25	1
7	QTB30-φ24×φ8.5×3	02.DLJ.QTB30	Thick washerφ24×φ8.5×3	1
8	270Q - 25010A	02.DLJ.270Q-25010A	Alternator bracket	1
9	270Q - 25001	02.DLJ.270Q-25001	Second fixed swift	1
10	270Q - 25020	02.DLJ.270Q-25020	First fixed swift (insert)	1
11	9074.15 - M8X20	02.DLJ.9074-M8X20	Bolt M8×20	1
12	LJ462Q - 1 - 3701010D	02.DLJ.LJ462Q-1-3701010D	Alternator	1

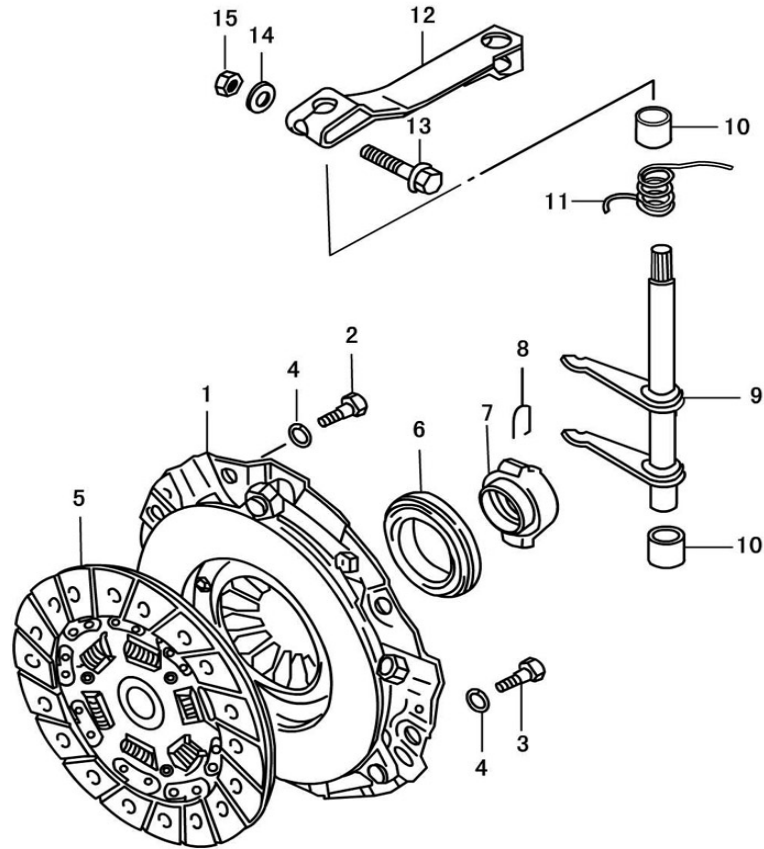
TRANSMISSION TANK



No.	Code name	ERP CODE	Description	Qty
1	1701111	02.DLJ.1701111	Upper housing of transmission	1
2	1701112	02.DLJ.1701112	Lower housing of transmission	1
3	1701113	02.DLJ.1701113	Locating pin	2
4	5787—M6X40	03.01.5787-M6×40/05	Bolt M6×40	1
5	5787—M8X50	03.01.5787-M8×50/05	Bolt M8×50	10
6	5787—M8X70	03.01.5787-M8×70/05	Bolt M8×70	5
7	5787—M8X90	03.01.5787-M8×90/05	Bolt M8×90	1
8	5787—M8X135	03.01.5787-M8×135/05	Bolt M8×135	1

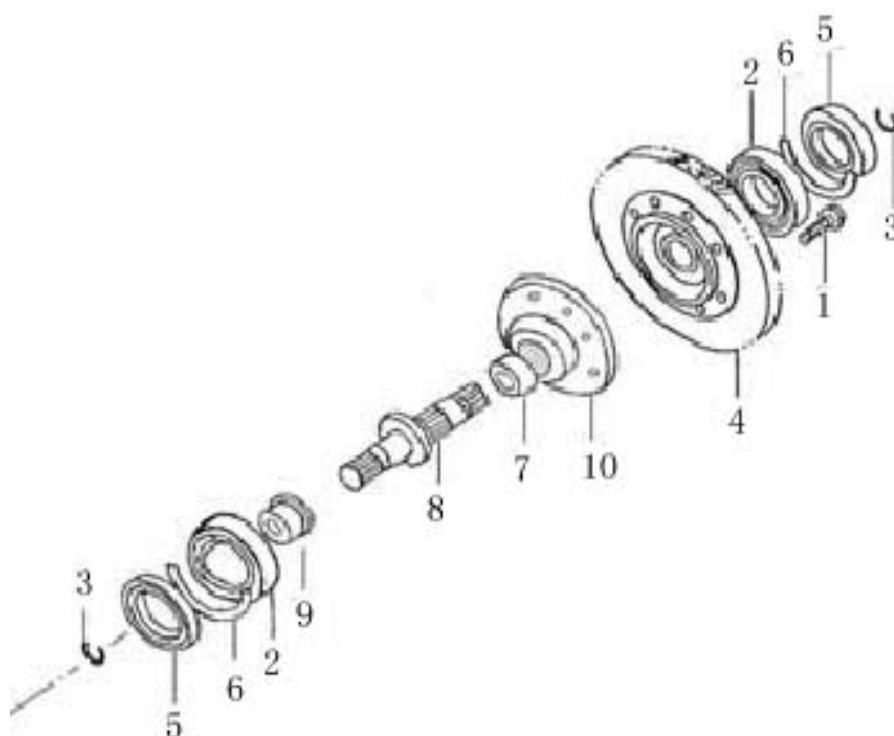
9	1701301	02.DLJ.1701301	Baffle plate of seal ring of the first shaft	1
10	3452.1-"O"40X2.65	02.DLJ.3452.1	"O" type seal ring 40×2.65	1
11	819—M6X16	02.DLJ.819-M6X16	Bolt M6×16	4
12	1701140	02.DLJ.1701140	Dip stick	1
13	3452.1-"O"15X2.65	02.DLJ.3452.1	"O" type seal ring15×2.65	1
14	ZBT32001.3—87	02.DLJ.ZBT32001.3-87	Bolt Z 1 / 2"—14	1
15	ZBT32001.9—87	02.DLJ.ZBT32001.9-87	Bolt Z 1 / 2"—14(magnetism)	1
16	1701017	02.DLJ.1701017	Sight hole cover	1
17	1702050	02.DLJ.1702050	Sealing cover assembly of shift lever	3
18	1701025	02.DLJ.1701025	Breathing pipe tie-in	1
19	1701026	02.DLJ.1701026	Breathing pipe	1
20	1701023	02.DLJ.1701023	Perkins joint	1
21	1701027	02.DLJ.1701027	Breathing pipe plug	1
22	1701024	02.DLJ.1701024	Line fastener	1
23	3729010	02.DLJ.3729010	Reverse switch	1
24	3452.1-"O"15X2.65	02.DLJ.3452.1	"O" type seal ring15×2.65	1
25	1000013	02.DLJ.1000013	Supporting piece	1
26	1701024	02.DLJ.1701024	Line fastener	1
27	LJ368Q—1000163	02.DLJ.LJ368Q-1000163	Shouldered tap bolt	2
28	LJ368Q—1000169	02.DLJ.LJ368Q-1000169	Shouldered tap bolt	1
29	LJ368Q—1000167	02.DLJ.LJ368Q-1000167	Stud	1
30	6171—M10X1.25	02.DLJ.6171-M10X1.25	Nut M10×1.25	1
31	4T06C	02.DLJ.4T06C	Transmission assembly	1
32	848—W10	02.DLJ.848-W10	Washer10	1

15 CLUTCH , SHIFTER SHAFT AND ROCKER ARM



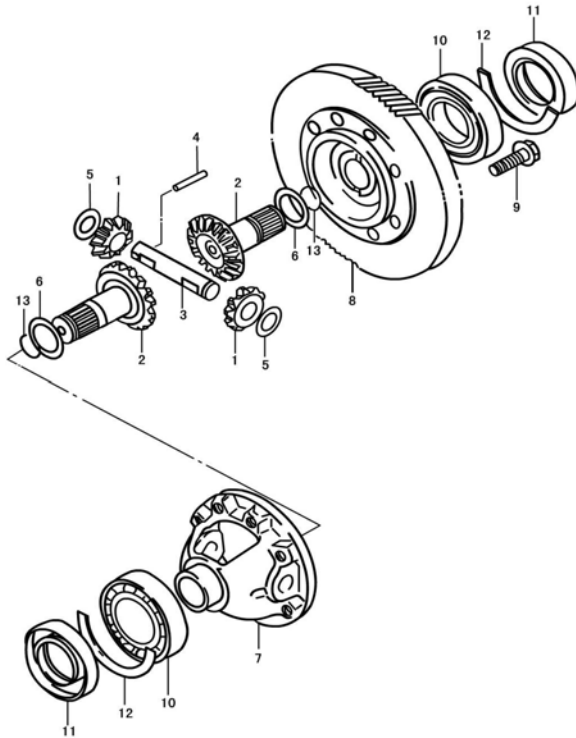
No.	Code name	ERP CODE	Description	Qty
1	QST160HH14	02.DLJ.QST160HH14	Clutch pressure plate	1
2	LJ462Q—1—1005024D	02.DLJ.LJ462Q-1-1005024D	Clutch cover bolt	2
3	9074.15—M8X16	02.DLJ.9074.15-M8X16	Bolt tab M8×16	4
4	859—W8	02.DLJ.859-W8	Light gage spring washer	6
5	DST160A71	02.DLJ.DST160A71	Clutch plate	1
6	1701510	02.DLJ.1701510	Clutch release bearing	1
7	1701501	02.DLJ.1701501	Release bearing carrier	1
8	1701022	02.DLJ.1701022	Circlip	2
9	1701040	02.DLJ.1701040	Clutch fork	1
10	1701019	02.DLJ.1701019	Bushing ring	2
11	1701018	02.DLJ.1701018	Tension spring	1
12	1701016	02.DLJ.1701016	Clutch action arm	1
13	5789—AM8X35	02.DLJ.5789-AM8X35	Bolt AM8×35	1
14	97.1—W8	02.DLJ.97.1-W8	Washer	1
15	6170—M8	02.DLJ.6170-M8	Nut M8	1

16 DIFFERENTIAL



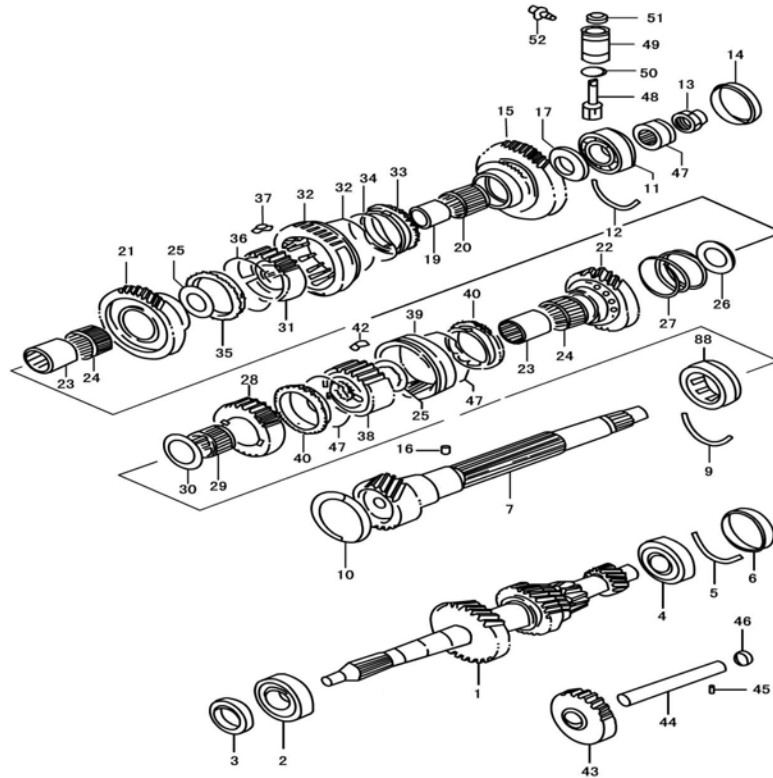
No	Code name	ERP CODE	Description	Qty
1	5787-M10×1.25×20-10.9	03.01.5787-M10×1 , 25×20/05	Bolt M10×1.25×20-10.9	1
2	276-6207Z/P63	02.DLJ.276-6207Z/P63	Endocentric ball bearing 6207Z/P63	2
3	MQC4-2303016	02.DLJ.MQC4-2303016	Steel cable baffle ring	2
4	4T06-2303021	02.DLJ.4T06-2303021	Main reduction gear	1
5	MQC4-1701090	02.DLJ.MQC4-1701090	Differential seal ring	2
6	MQC4-1701014	02.DLJ.MQC4-1701014	Thrust ring of Differential	2
7	4T06C-2303014	02.DLJ.4T06C-2303014	sleeve2	1
8	4T06C-2303012	02.DLJ.4T06C-2303012	output shaft of Differential	1
9	4T06C-2303013	02.DLJ.4T06C-2303013	sleeve1	1
10	MQC4-1701410	02.DLJ.MQC4-1701410	speedometer and seal ring of worm wheel	1

16 DIFFERENTIAL



No	Code name	Description		Qty
1	2303017	Differential Planet gear	差速器行星齿轮	2
2	2303015	Half axle of Differential	差速器半轴	2
3	2303019	Planet gear shaft	行星齿轮轴	1
4	GB309-84	Needle bearing D5×25.8	滚针轴承D5×25.8	1
5	2303018	Planet gear washer	行星齿轮垫圈	2
6-1	2303012	Half axle adjusting washer	半轴调整垫圈	0~2
6-2	2303013	Half axle adjusting washer	半轴调整垫圈	0~2
6-3	2303014	Half axle adjusting washer	半轴调整垫圈	0~2
7	2303011	Differential case	差速器壳	1
8	2303021	Main reduction gear	主减速齿轮	1
9	GB5789-86	Bolt M10×1.25×20-10.9	螺栓M10×1.25×20-10.9	8
10	GB/T276-94	Endocentric ball bearing 6207Z/P63	向心球轴承6207Z/P63	2
11	1701090	Differential seal ring assembly	差速器密封圈总成	2
12	1701014	Thrust ring of Differential	差速器轴承止推环	2
13	2303016	Steel cable baffle ring	钢丝档圈	2

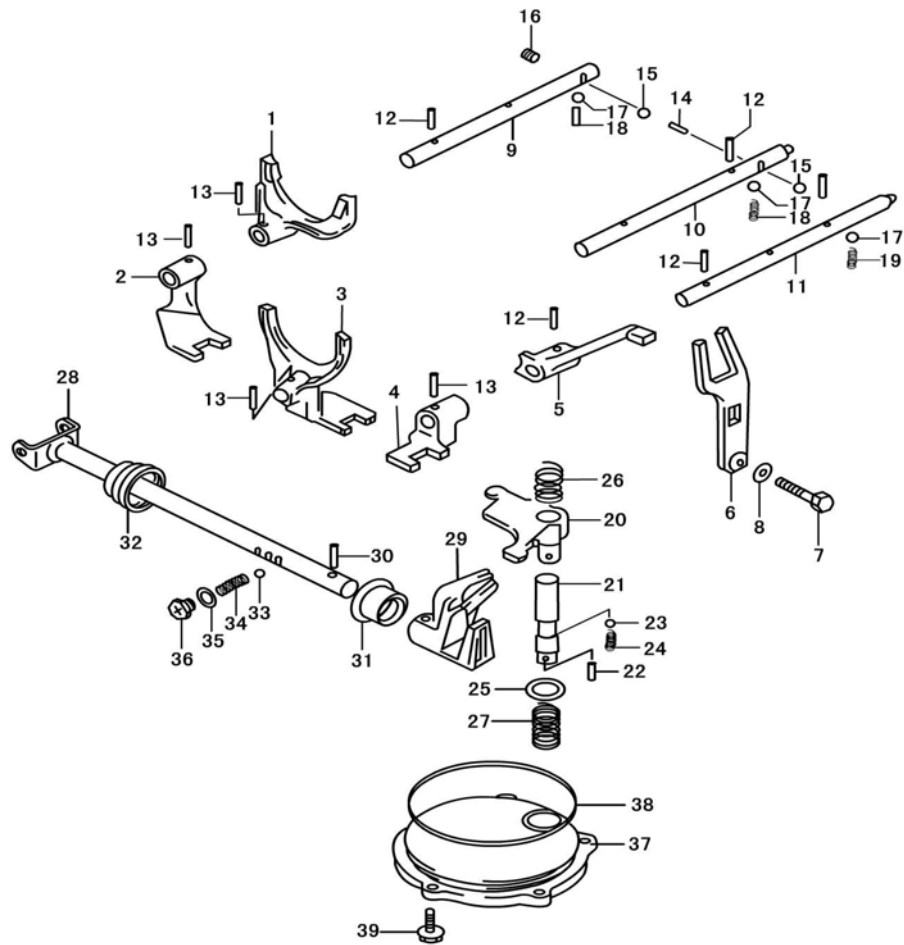
17 FIRST SHAFT AND COUNTERSHAFT



N o.	Code name	ERP CODE	Description	Qty
1	1701130	02.DLJ.1701130	The first shaft	1
2	276—6204-2RS/P53	02.DLJ.276-6204-2RS	Endocentric ball bearing 6204—2RS/P53	1
3	1701310	02.DLJ.1701310	The first shaft seal ring	1
4	276—6204-2RS/P53	02.DLJ.276-6204-2RS	Endocentric ball bearing 6204—2RS/P53	1
5	1701011	02.DLJ.1701011	Thrust ring of the first shaft bearing	1
6	1701120	02.DLJ.1701120	The first shaft seal cap	1
7	1701201	02.DLJ.1701201	Countershaft	1
8	1701250	02.DLJ.1701250	Cylindrical roller bearing with Locking notch and without inner circle	1
9	1701013	02.DLJ.1701013	Thrust ring of countershaft bearing (right)	1
10	1701060	02.DLJ.1701060	Sealing cap of countershaft (right)	1
11	276—6204-2RS/P53	02.DLJ.276-6204-2RS	Endocentric ball bearing 6204—2RS/P53	1
12	1701012	02.DLJ.1701012	Thrust ring of countershaft bearing (left)	1
13	1701219	02.DLJ.1701219	Tight nut of countershaft	1
14	1701050	02.DLJ.1701050	Sealing cap of Countershaft (left)	1
15	1701211	02.DLJ.1701211	The first gear of countershaft	1
16	309—P2X7.8	02.DLJ.309-P2X7.8	Needle P2×7.8	1

17	1701203	02.DLJ.1701203	The first gear gasket of countershaft	1
18	308—4.7625G60b	02.DLJ.308-G60B	Steel ball4.7625G60b	1
19	1701204	02.DLJ.1701204	First gear bushing ring of countershaft	1
20	5846—K253023	02.DLJ.K253023	Needle bearing K253023	1
21	1701212	02.DLJ.1701212	The second gear of countershaft	1
22	1701213	02.DLJ.1701213	The third gear of countershaft	1
23	1701012	02.DLJ.1701012	The second and the third gears bushing ring	2
24	5846—K303520	02.DLJ.K303520	Needle bearing K303520	2
25	1701206	02.DLJ.1701206	The second and the third gears gasket	2
26	1701208	02.DLJ.1701208	The third gear spacer	1
27	1701207	02.DLJ.1701207	The second and the third gears pressure spring	1
28	1701214	02.DLJ.1701214	Fourth gear of countershaft	1
29	5846—K253020	02.DLJ.K253020	Needle bearing K253020	1
30	1701209	02.DLJ.1701209	The fourth gear gasket	1
31	1701232	02.DLJ.1701232	Low synchronizer shell	1
32	1701231	02.DLJ.1701231	Low synchronizer sleeve	1
33	1701215	02.DLJ.1701215	Low synchronizer ring (left)	1
34	1701217	02.DLJ.1701217	Low synchronizer ring spring	1
35	1701216	02.DLJ.1701216	Low synchronizer ring (right)	1
36	1701233	02.DLJ.1701233	Low synchronizer spring	2
37	1701234	02.DLJ.1701234	Synchronizer guide block	3
38	1701242	02.DLJ.1701242	High synchronizer shell	1
39	1701241	02.DLJ.1701241	High synchronizer sleeve	1
40	1701218	02.DLJ.1701218	High synchronizer ring	2
41	1701243	02.DLJ.1701243	High synchronizer spring	2
42	1701234	02.DLJ.1701234	Synchronizer guide block	3
43	1701080	02.DLJ.1701080	Racing gear of reverse gear	1
44	1701015	02.DLJ.1701015	Reverse gear shaft	1
45	119—D5X13	02.DLJ.119-D5X13	Pin D5×13	1
46	1701070	02.DLJ.1701070	Sealing cap assembly of reverse gear shaft	1
47	1701202	02.DLJ.1701202	Speed gage worm	1
48	1701209	02.DLJ.1701209	Speed gage worm wheel	1
49	1701401	02.DLJ.1701401	Speed gage worm wheel bushing ring	1
50	3452.1-"O"	02.DLJ.3452.1	“O” type seal ring	1
51	1701410	02.DLJ.1701410	Seal ring of Speed gage worm wheel	1
52	1701028	02.DLJ.1701028	Speed gage thrust bolt	1

18 GEAR SHIFTED GEAR FORK



NO.	Code name	ERP CODE	Description	Qty
1	1702014	02.DLJ.1702014	Shift fork for the first gear	1
2	1702013	02.DLJ.1702013	Shift fork for the first and the second gears	1
3	1702015	02.DLJ.1702015	Shift fork for the third and the fourth gears	1
4	1702012	02.DLJ.1702012	Reverse gear shift fork	1
5	1702011	02.DLJ.1702011	Reverse gear shift cantilever	1
6	1702060	02.DLJ.1702060	Shift fork assembly of reverse gear	1
7	5783— M10X1.25X35	02.DLJ.M10X35	Bolt M10×1.25×35	1
8	1702019	02.DLJ.1702019	Shift fork washer of reverse gear	1
9	1702017	02.DLJ.1702017	Shift lever for first and the second gears	1
10	1702018	02.DLJ.1702018	Shift lever for third and the fourth gears	1
11	1702016	02.DLJ.1702016	Reverse gear shift lever	1
12	879— P4.5X18	02.DLJ.879-P4.5X18	Pin 4.5×18	4
13	879—	02.DLJ.879-P4.5X20	Pin 4.5×20	4

18 GEAR SHIFTED GEAR FORK

	P4.5X20			
14	309—3X9.8	02.DLJ.309-3X9.8	Needle 3×9.8	1
15	308— 9.5250G60b	02.DLJ.308-G60B	Steel ball 9.5250G60b	2
16	1701021	02.DLJ.1701021	Hole plug	1
17	308— 9.5250G60b	02.DLJ.308-G60B	Steel ball9.5250G60b	3
18	1702021	02.DLJ.1702021	Locating spring of high and low speed shift level	2
19	1702022	02.DLJ.1702022	Locating spring	1
20	1702082	02.DLJ.1702082	Transposition Rocker arm	1
21	1702081	02.DLJ.1702081	Transposition shaft	1
22	119—D4X8	02.DLJ.119-D4X8	Pin D4×8	1
23	308— 7.9375G60b	02.DLJ.308-G60B	Steel ball 7.9375G60b	1
24	1702029	02.DLJ.1702029	Locating spring	1
25	1702026	02.DLJ.1702026	Transposition shaft washer	1
26	1702024	02.DLJ.1702024	Long spring of Transposition shaft	1
27	1702025	02.DLJ.1702025	Short spring of Transposition shaft	1
28	1702070	02.DLJ.1702070	Shift shaft assembly	1
29	1702028	02.DLJ.1702028	Transposition shaft rocker	1
30	879—P5X22	02.DLJ.879-P5X22	Pin 5×22	1
31	1702040	02.DLJ.1702040	Seal ring of shift shaft	1
32	1702027	02.DLJ.1702027	Dirt guard of Shift shaft	1
33	308—7.9375 G60b	02.DLJ.308-G60B	Steel ball 7.9375 G60b	1
34	1702022	02.DLJ.1702022	Locating spring	1
35	1702019	02.DLJ.1702019	Shifted gear shifting fork washer of reverse gear	1
36	ZBT31033— 88	02.DLJ.ZBT31033-88	Hollow-headed and cross recess bolt M10×1.25×9	1
37	1702023	02.DLJ.1702023	Transposition shaft cap	1
38	345.1-"O"95 X2.65	02.DLJ.345.1-95X2.65	“O” type seal ring 95×2.65	1
39	789— AM6X20	02.DLJ.789-AM6X20	Bolt AM6×20	1