



DISCOVERY UTV - PART LIST - UTV800CC 4WD



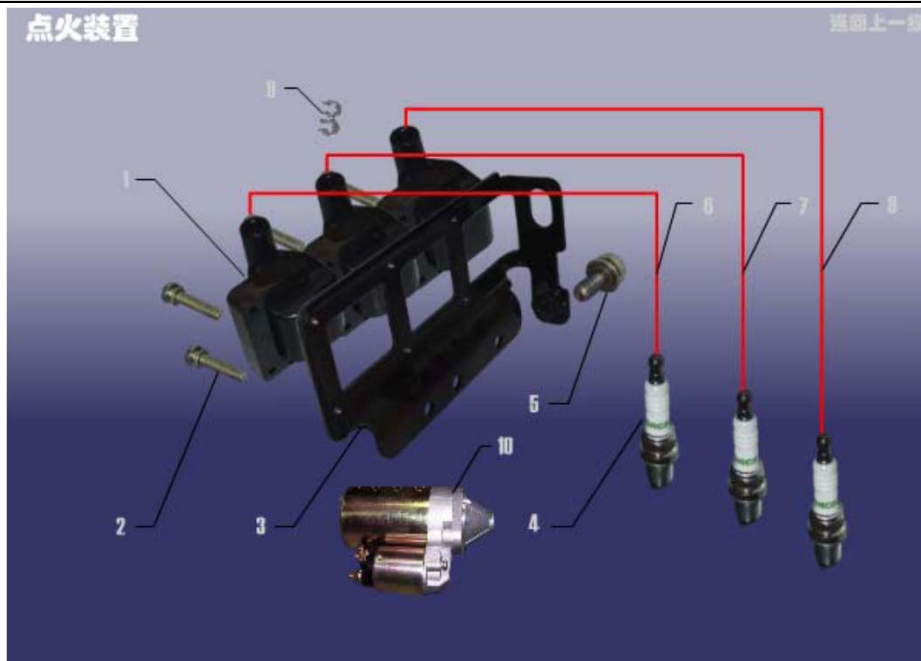
INDEX OF PART LIST

ENGINE	FRAME
Ignition device	Engine
Cylinder cover	Chassis system
Piston crank mechanism	Frame system
Induction system	Drive assembly
Cooling device	Rear wheel assembly
Exhaust system	Front wheel assembly
Air distributing device	Steering shaft assembly
Cylinder	Suspension & Arm assembly
Valve chamber cover	Seats, Safety belt system
Crank shaft	Braking system
Lubrication device	Interior trimming
Generator	Wire harness
Crankcase oil tray	Cable operating mechanism
Case & components	Water pipe & three way
Output shaft assembly	Exterior trimming parts
Input shaft assembly & reversing shaft assembly	Front axle assembly
Shift fork & shift fork shaft	Rear axle assembly
Shift operation assembly	
Main reducing gear & driven pulley assembly	

ENGINE SECTION

E-1

IGNITION DEVICE

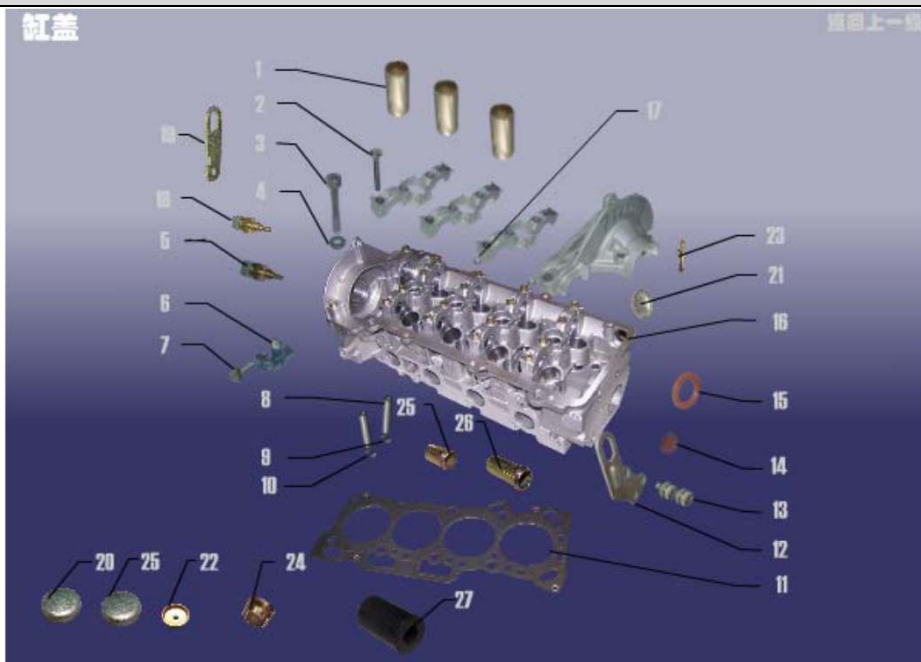


E-1 IGNITION DEVICE

REF NO.	(PART NO.)	DESCRIPTION	REGD NO.
01	S11-3705100	IGNITION COIL	1
02	Q2320525	CROSS SLOT ROUND HEAD WOOD BOLT	4
03	S11-3705001	IGNITION COIL BRACKET	1
04	S11-3707100	SPARKING PLUG ASSEMBLY	3
05	Q1460820	BOLT	1
06	S11-3707040	3th CYLINDER HIGH PRESSURE CABLE ASSEMBLY	1
07	S11-3707030	2nd CYLINDER HIGH PRESSURE CABLE ASSEMBLY	1
08	S11-3707020	1st CYLINDER HIGH PRESSURE CABLE ASSEMBLY	1
09	S11-3724183	IGNITION COIL DUAL CLIP	1
10	S11-3708110GA	STARTER ASSEMBLY	1

E-2

CYLINDER COVER



E-2 CYLINDER COVER

REF NO.	(PART NO.)	DESCRIPTION	REGD NO.
01	372-1003074	SPARKING PLUG PROTECTION TUBE	3
02	Q1400638	HEXAGON BOLT	12
03	372-1003051	CYLINDER COVER BOLT	8
04	372-1003052	CYLINDER COVER BOLT WASHER	8
05	S11-3808013	WATER TEMPERATURE SENSOR	1
06	S11-1003069	CAMSHAFT PHASE SENSOR	1
07	Q1400816	HEXAGON BOLT	1
08	372-1003023	VALVE GUIDE PIPE	12
09	372-1003022	EXHAUST VALVE SEAT RING	6
10	372-1003021	INTAKE VALVE SEAT RING	6
11	372-1003040	CYLINDER COVER GASKET ASSEMBLY	1
12	372-1003202	FRONT LUG	1
13	Q1840816	HEXAGON FLANGE FACING BOLT	2
14	372-1003067	BLOCKAGE LID	1
15	372-1003066BA	CAMSHAFT SEAL	1
16	372-1003010	CYLINDER COVER ASSEMBLY	1
17	372-1003063	CAMSHAFT BEARING COVER LOCATING SLEEVE	1

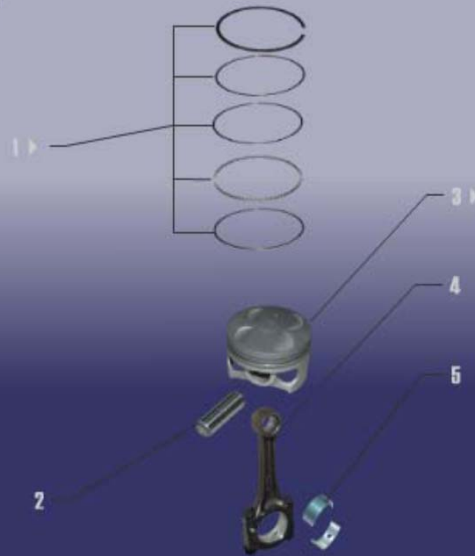
19	372-1003201BA	REAR LUG	1
21	372-1003024	BOWL PLUG	1
22	372-1003028	STOPPER	1
23	372-1003038	DUAL HEAD BOLT	1
24	372-1003076	WATER-PROOF JACKET	1
26	372-1306017	SHORT CIRCLE WATER PIPE	1

E-3

PISTON CRANK MECHANISM

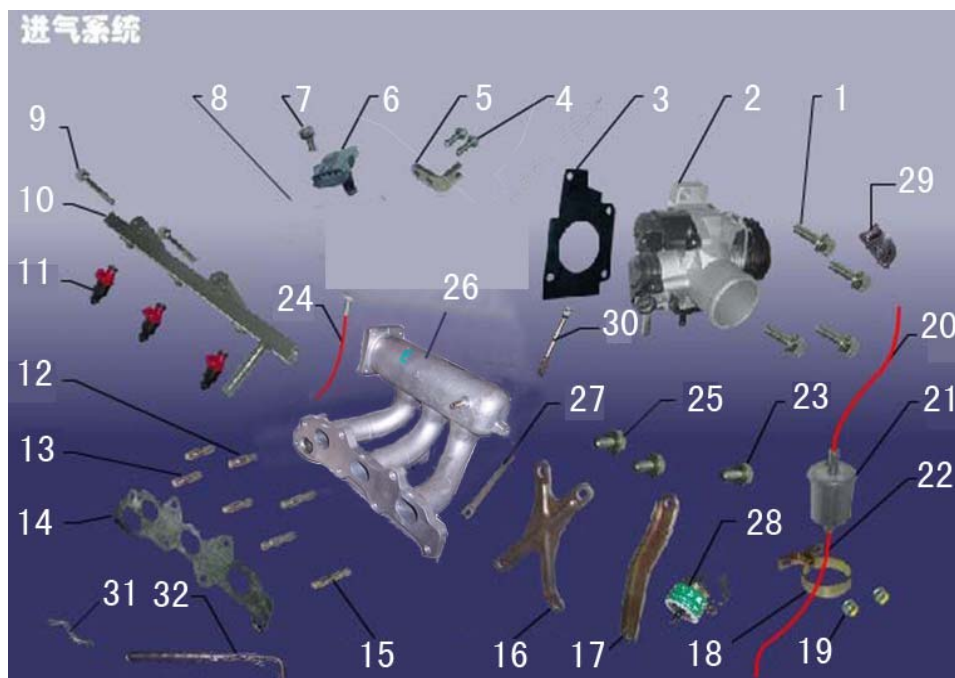
活塞连杆机构

返回上一级



E-3 PISTON CRANK MECHANISM

REF NO.	(PART NO.)	DESCRIPTION	REGD NO.
01	372-1DE1004030	PISTON RING ASSEMBLY (ONE UNIT)	3
02	372-1004031	PISTON PIN	3
03	372-1004021	PISTON	3
04	372-1004110	CONNECTING ROD ASSEMBLY	3
05	372-1DF1004110	CONNECTING ROD BUSHING (ONE UNIT)	3

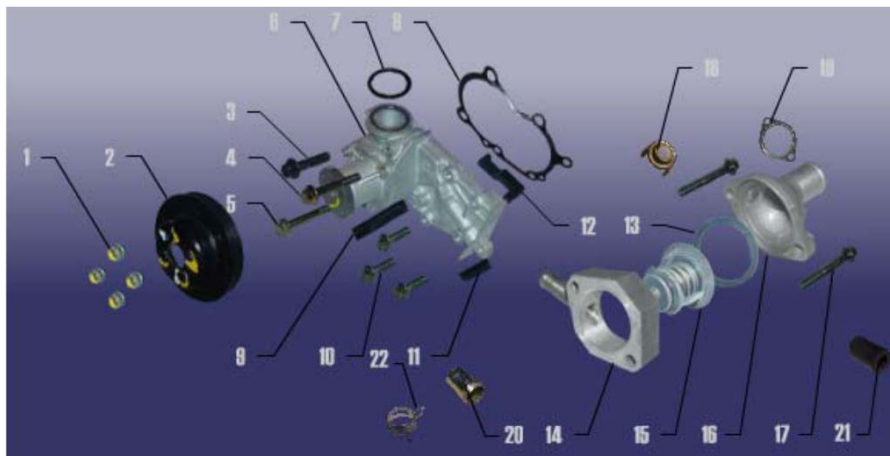


E-6 INDUCTION SYSTEM

REF NO.	(PART NO.)	DESCRIPTION	REGD NO.
01	Q1420625	HEXGON BOLT	4
02	S11-1129010JA	THROTTLE VALVE ASSEMBLY	1
03	372-1107012	THROTTLE VALVE GASKET	1
04	Q1840620	HEXGON FLANGE FACING BOLT	2
05	372-1008043	THROTTLE CABLE BRACKET	1
6	S11-1109411	INTAKE TEMPERATURE PRESURE TRANSDUCER	1
07	Q1400416	HEXAGON HEAD BOLT	1
09	Q1420645	HEXAGON HEAD BOLT	2
10	S11-1112030	OIL RAIL	1
11	S11-1112010	FUEL INJECTOR ASSEMBLY	1
12	Q1200835F3	DUAL HEAD STUD	6
13	Q1200828F3	DUAL HEAD STUD	6
14	372-1008021	INTAKE MANIFOLD GASKET	6
15	Q1200840F3	DUAL HEAD BOLT	6
16	372-1008041	INTAKE MANIFOLD FRONT BRACKET	1
17	372-1008042	INTAKE MANIFOLD REAR BRACKET	1
18	372-1014150	FIXING CLIP	1

19	Q1400612	HEXGON HEAD BOLT	1
20	372-1014120	CRANKCASE VENT-PIPE (2)	1
21	372-1014140	OIL AND GAS SEPERATOR ASSEMBLY	1
22	372-1014110	CRANKCASE VENT-PIPE (1)	1
23	Q1840816	HEXGON FLANGE FACING BOLT	1
24	372-1014130	CRANKCASE VENT-PIPE (3)	1
25	Q1840820	HEXGON FLANGE FACING BOLT	2
26	372N-1008010372	INTAKE MANIFOLD	1
29	372-1107051	THROTTLE VALVE POSITION SENSOR	1
32	372-1014160	AUTOMATIC TEMPERATURE LIMITING CRANKCASE VENT-PIPE ASSEMBLY	1

E-11
COOLING DEVICE

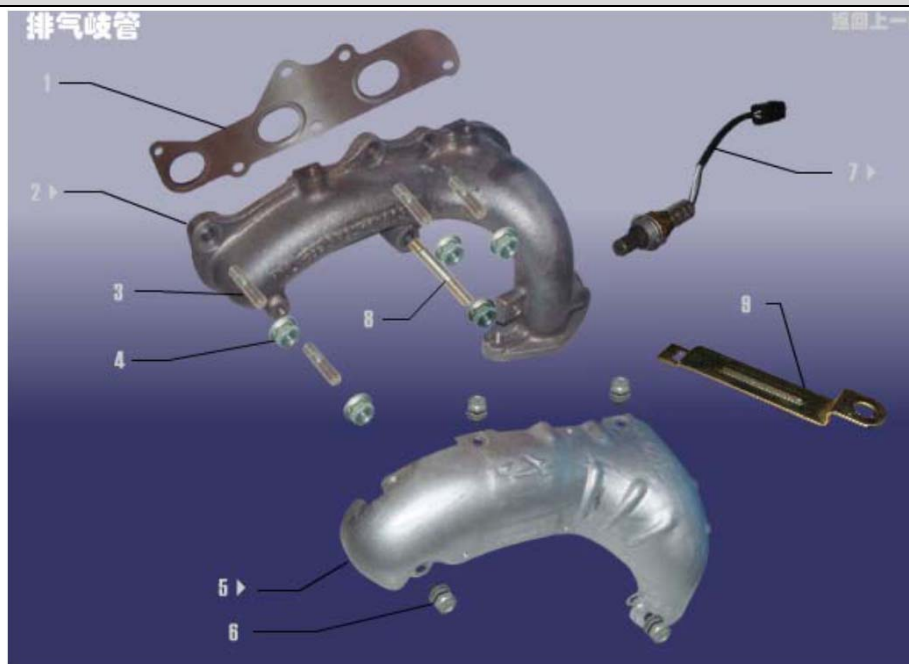


E-11 COOLING DEVICE

REF NO.	(PART NO.)	DESCRIPTION	REGD NO.
01	Q1400612	HEXGON HEAD BOLT	4
02	372-1307014	WATER PUMP PULLEY	1
03	Q1840840	HEXGON FLANGE FACING BOLT	1
04	Q1840855	BOLT GB/T16674 M8X55	1
05	Q1840865	HEXGON FLANGE FACING BOLT	1
06	372-1307010	WATER PUMP ASSEMBLY	1
07	372-1307015	O-RING	1
08	372-1307041	WATER PUMP GASKET	1
09	372-1307018	SEALING 2	1
10	Q1840825	BOLT	3
11	372-1307019	SEALING 3	1
12	372-1307012	SEALING 1	1
13	GB50-18	RUBBER SEAL O-RING	1
14	372-1306016	THERMOSTAT OUTSIDE BASE AND SHORT CIRCLE WATER PIPE ASSEMBLY	1
15	372-1306020	THERMOLATOR ASSEMBLY	1
16	372-1306001	THERMOLATOR BASE	1
17	Q1840850	HEXGON HEAD FLANGE FACING BOLT	1
18	372-1306012	THERMOLATOR INNER BASE	1
19	372-1306018	THERMOSTAT OUTSIDE BASE	1
20	372-1306017	SHORT CIRCLE WATER PIPE	1
21	A11-1303421	GAS BLEEDER STOPPER	1
22	Q673B21	STEEL BELT ELASTIC CLAMPING RING	1

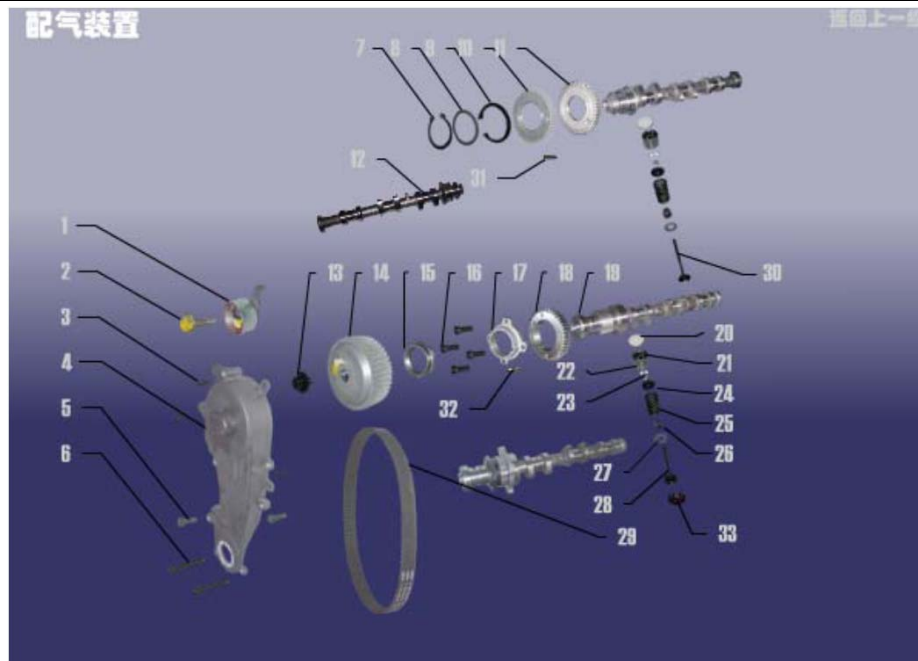
E-13

EXHAUST SYSTEM



E-13 EXHAUST SYSTEM

REF NO.	(PART NO.)	DESCRIPTION	REGD NO.
01	372-1008033	EXHAUST MANIFOLD GASKET	1
02	372-1008031	EXHAUST MANIFOLD	1
03	Q1200825F3	DUAL HEAD STUDS	4
04	Q33008	HEXAGON NUT	5
05	372-1008044	HEATPROOF COVER	1
06	Q1460612	HEXAGON HEAD BOLT	4
07	S11-1205110	OXYGEN SENSOR	1
08	Q1200835F3	DUAL HEAD STUDS	1
09	S11-3724863	OXYGEN SENSOR BRACKET	1

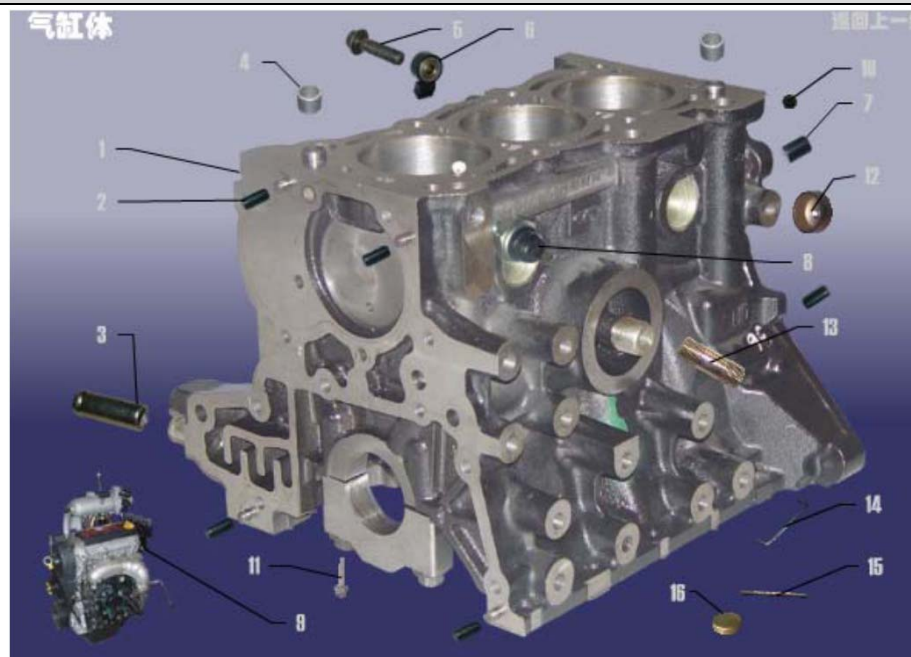
E-17
AIR DISTRIBUTING DEVICE

E-17 AIR DISTRIBUTING DEVICE

REF NO.	(PART NO.)	DESCRIPTION	REGD NO.
01	372-1007030	TENSION PULLEY ASSEMBLY	1
02	Q1401045	HEXAGON BOLT	1
03	Q1400616	HEXAGON BOLT	1
04	372-1007040	TIMING GEAR COVER ASSEMBLY	1
05	Q1460625	HEXAGON BOLT	2
06	Q1460650	HEXAGON BOLT	2
07	Q43140	SHAFT CLIP RING	1
08	372-1006032	SADDLE SHAPED ELASTIC WASHER	1
09	372-1006031	DRIVE RING	1
10	372-1006041	INTAKE CAMSHAFT COUNTER GEAR	1
11	372-1006030	INTAKE CAMSHAFT MAIN GEAR	1
12	372-1006020	INTAKE CAMSHAFT ASSEMBLY	1
13	372-1006071	HEXAGON FLANGE FACING BOLT	1
14	372-1006066	CAMSHAFT TIMING GEAR	1
15	372-1006064	LOCKNUT	1
16	Q2180620	INNER HEXAGON BOLT	4
17	372-1006063	CONNECTING FLANGE	1

18	372-1006062	EXHAUST CAMSHAFT GEAR	1
19	372-1006060	EXHAUST CAMSHAFT ASSEMBLY	1
20	372-1007017-18	ADJUSTING WASHER	1
20	372-1007017-20	ADJUSTING WASHER	1
20	372-1007017-22	ADJUSTING WASHER	1
20	372-1007017-24	ADJUSTING WASHER	1
20	372-1007017-26	ADJUSTING WASHER	1
20	372-1007017-28	ADJUSTING WASHER	1
20	372-1007017-30	ADJUSTING WASHER	1
20	372-1007017-32	ADJUSTING WASHER	1
20	372-1007017-34	ADJUSTING WASHER	1
20	372-1007017-36	ADJUSTING WASHER	1
20	372-1007017-38	ADJUSTING WASHER	1
20	372-1007017-40	ADJUSTING WASHER	1
20	372-1007017-42	ADJUSTING WASHER	1
20	372-1007017-44	ADJUSTING WASHER	1
20	372-1007017-46	ADJUSTING WASHER	1
20	372-1007017-48	ADJUSTING WASHER	1
20	372-1007017-50	ADJUSTING WASHER	1
20	372-1007017-52	ADJUSTING WASHER	1
20	372-1007017-54	ADJUSTING WASHER	1
20	372-1007017-56	ADJUSTING WASHER	1
20	372-1007017-58	ADJUSTING WASHER	1
20	372-1007017-60	ADJUSTING WASHER	1
20	372-1007017-62	ADJUSTING WASHER	1
20	372-1007017-64	ADJUSTING WASHER	1
20	372-1007017-66	ADJUSTING WASHER	1
20	372-1007017-68	ADJUSTING WASHER	1
20	372-1007017-70	ADJUSTING WASHER	1
20	372-1007017-72	ADJUSTING WASHER	1
20	372-1007017-74	ADJUSTING WASHER	1
20	372-1007017-76	ADJUSTING WASHER	1
20	372-1007017-78	ADJUSTING WASHER	1
20	372-1007017-80	ADJUSTING WASHER	1
21	372-1007018	VALVE TAPPET	3
22	372-1007019	VALVE LOCK SPLIT	12
23	372-1007021	ROTARY SLEEVE	1
25	372-1007013	VALVE SPRING	12
26	372-1007020	VALVE OIL SEAL	1
27	372-1007016	VALVE SPRING LOWER SEAT	6

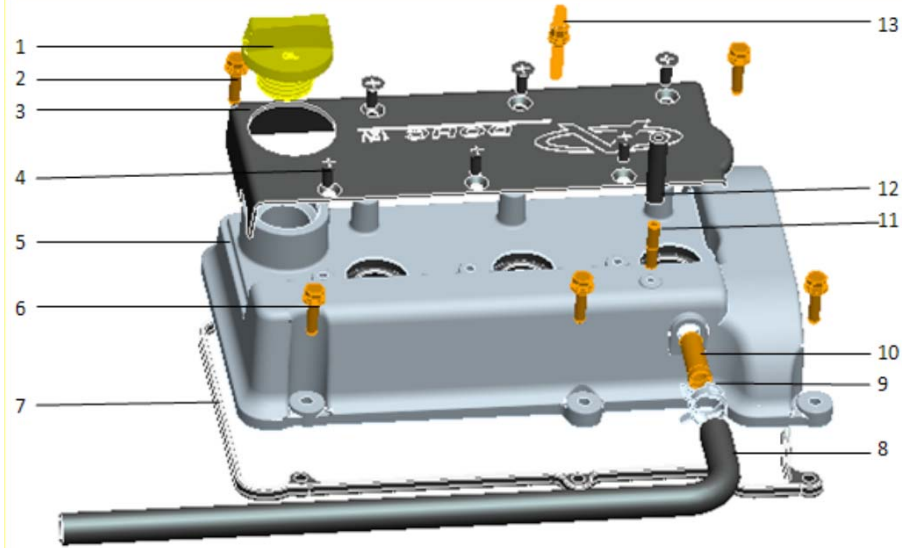
28	372-1007012	EXHAUST VALVE	6
29	372-1007081	TIMING BELT	1
30	372-1007011	INTAKE VALVE	6
31	372-1006042	GEAR DOWEL PIN	1
32	372-1006067	CONNECTING FLANGE SPACER PIN	1
33	372-1007014	VALVE SPRING UPPER SEAT	6

E-18
CYLINDER

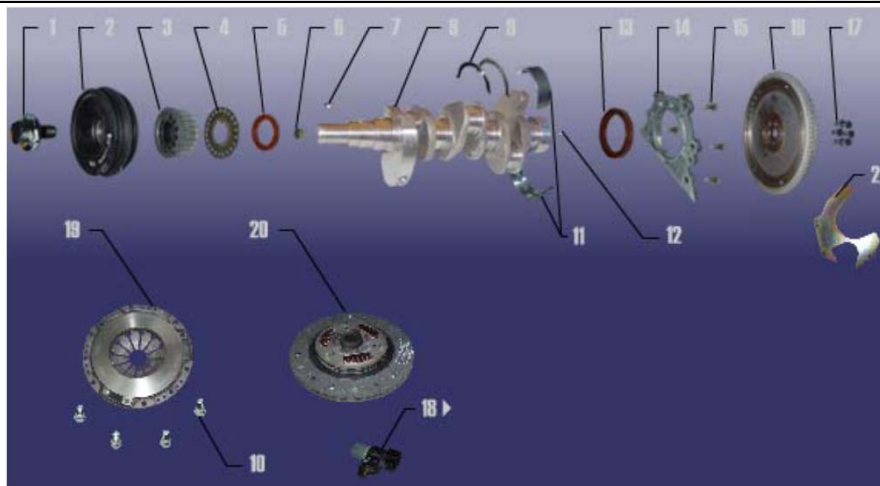


E-18 CYLINDER

REF NO.	(PART NO.)	DESCRIPTION	REGD NO.
01	372-1002010	CYLINDER COMP	1
02	372-1002037	DOWEL PIN	2
03	372-1002046	CRANKCASE VENT-PIPE	1
04	372-1002044	CYLINDER HEAD DOWEL PIN	2
05	Q1840830	HEXAGON FLANGE FACING BOLT	1
06	372-1002060	KNOCK SENSOR	1
08	372-1002036	DOWEL PIN	1
09	372-1002070	OIL PRESSURE SWITCH	1
10	11G10GB308	STEEL BALL GB308-89	1
11	372-1002023	MAIN BEARING COVER BOLT	8
12	372-1002045	OIL CONSOLE LID	1
13	372-1012021	OIL FILTER JUNCTION	1
16	372-1003026	BOWL PLUG	4

E-19
VALVE CHAMBER COVER

E-19 VALVE CHAMBER COVER

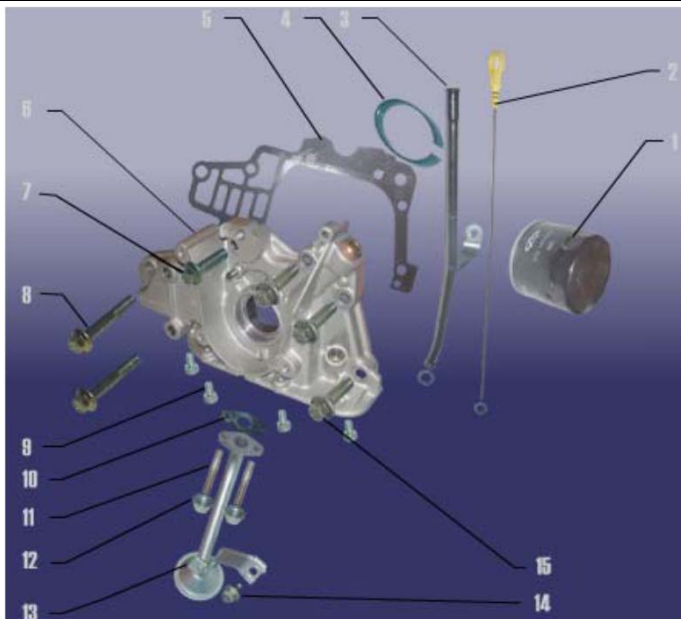
REF NO.	(PART NO.)	DESCRIPTION	REGD NO.
1	372-1003090	OIL FILLER CAP	1
2	Q1460625	HEXAGON BOLT	5
3	372-1003075	COVER BOARD WITH SPARK PLUG HOLE	1
4	FQ2540616F32E	LOCATING SCREW	6
5	372-1003030FA	VALVE CHAMBER COVER ASSEMBLY	1
6	Q1460625	HEXAGON BOLT	5
7	372-1003036	VALVE CHAMBER COVER GASKET	1
8	38831800001100	CASE OIL PIPE	1
9	Q673B115	STEEL BELT ELASTIC CLAMPING RING	1
10	372-1002046	CRANKCASE VENT-PIPE	1
11	372-1002032	VALVE CHAMBER COVER IDLING VENTILATION TUBE	1
12	372-1014130CA	CRANKCASE VENT-PIPE (3)	1
13	372-1003038	DUAL HEAD BOLT	1

E-20
CRANKSHAFT

E-20 CRANKSHAFT

REF NO.	(PART NO.)	DESCRIPTION	REGD NO.
1	372-1005031	BELT PULLEY BOLT	1
2	372-1005040	TORSIONAL SHOCK ABSORBER ASSEMBLY	1
3	372-1005018	CRANKSHAFT TIMING GEAR	1
4	372-1005017	BELT BAFFLE	1
5	372-1005015BA	CRANKSHAFT FRONT OIL SEAL	1
6	372-1005033	NEEDLE BEARING	1
7	372-1005032	WOODRUFF KEY	1
8	372-1005010	CRANKSHAFT ASSEMBLY	1
9	372-1005016	THRUST PLATE	1
10	S11-1601101	BOLT-COVER COMP.	4
11	372-1DF1005010	CRANKCASE CLIP (ONE UNIT)	3
12	372-1005036	COTTER DOWEL PIN	1
13	372-1005030BA	CRANKSHAFT OIL SEAL	1
14	372-1005021	REAR OIL SEAL BRACKET	1
15	Q1840820	HEXAGON FLANGE FACING BOLT	3
16	372-1005050	FLYWHEEL ASSEMBLY	1
17	372-1005054	FLYWHEEL BOLT	6
18	S11-1005117	CRANKSHAFT POSITION SENSOR	1
19	S11-1601020CA	CLUTCH COVER ASSY.	1
20	S11-1601030DA	CLUTCH DRIVED	1
21	372-1002030	TRANSMISSION UPPER SEAL BOARD	1

E-22

LUBRICATION DEVICE

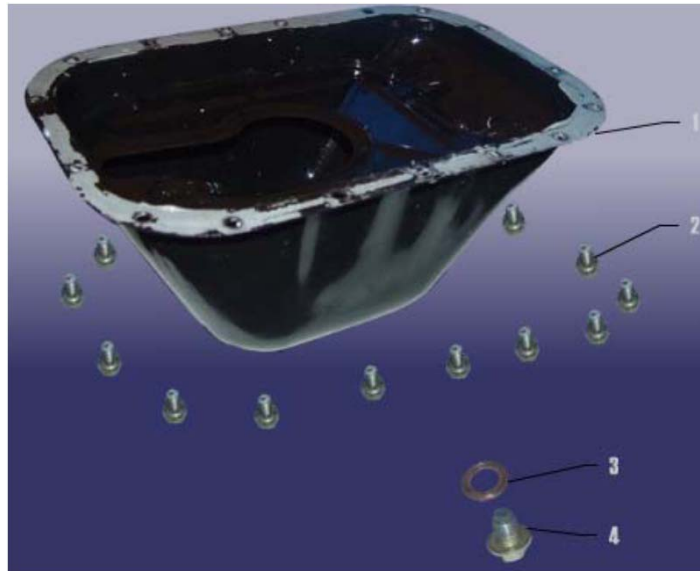


E-22 LUBRICATION DEVICE

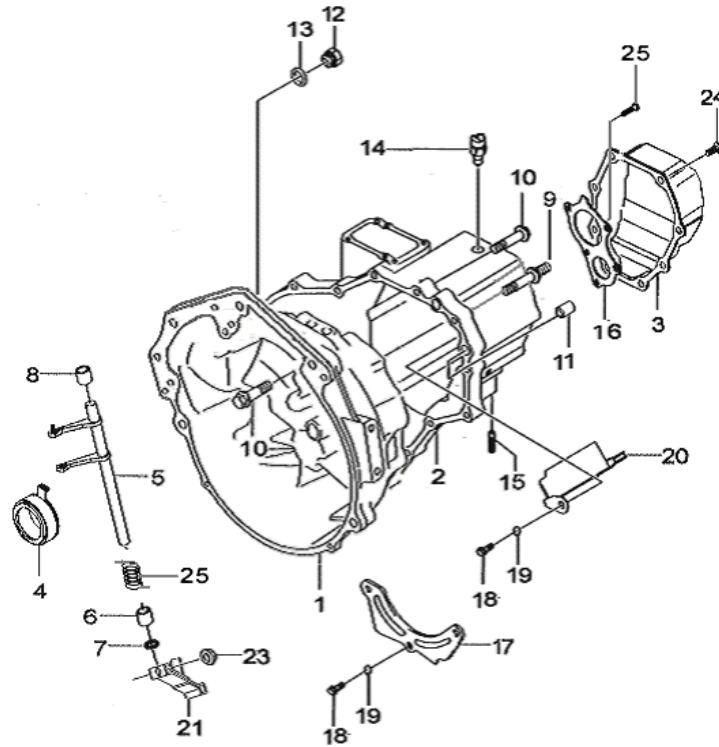
REF NO.	(PART NO.)	DESCRIPTION	REGD NO.
1	372-1012010	OIL FILTER ASSEMBLY	1
2	372-1009130	OIL GAUGE	1
3	372-1009120	OIL GAUGE TUBE ASSEMBLY	1
4	372-1011055	SEALING	1
5	372-1011021	OIL PUMP GASKET	1
6	372-1011030	OIL PUMP ASSEMBLY	1
7	Q1840825	BOLT	1
8	Q1840855	BOLT GB/T16674 M8x55	2
9	Q1420612	BOLT-OIL DRIP GROOVE ASSEMBLY	4
10	372-1010017	OIL COLLECTOR WASHER	1
11	Q1200616	DUAL END STUDS	2
12	Q33006	HEXAGON NUT	2
13	372-1010010	OIL FILTER ASSEMBLY	1
14	Q1840610	HEXAGON FLANGE FACING BOLT	1
15	Q1840830	HEXAGON FLANGE FACING BOLT	3

E-23**GENERATOR**

E-23 GENERATOR			
REF NO.	(PART NO.)	DESCRIPTION	REGD NO.
1	S11-3701110BA	GENERATOR ASSY.	1
2	S11-3701211BA	ADJUSTMENT LEVER	1
3	S11-5000105	HEXAGON HEAD BOLTS AND SHELLS,FLAT WASHER	1
4	S11-3701315	RIBBED	1
5	S11-1001415BA	POST-TRANSITION SUPPORT	1

E-24**CRANKCASE OIL TRAY****E-24 CRANKCASE OIL TRAY**

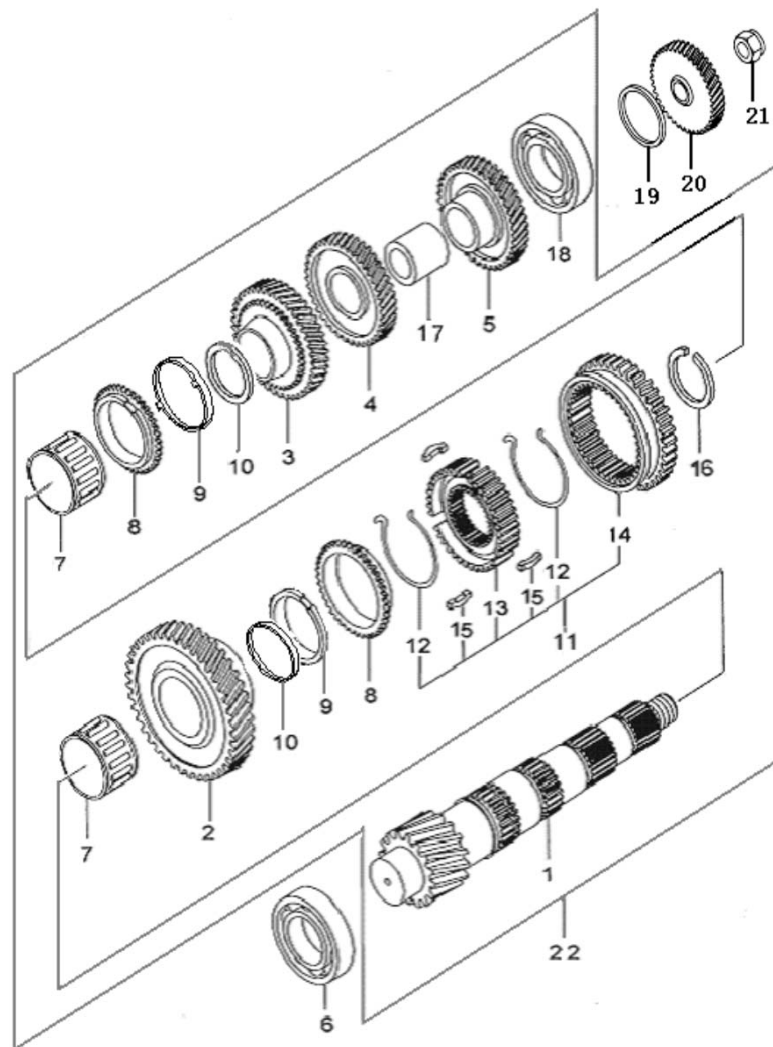
REF NO.	(PART NO.)	DESCRIPTION	REGD NO.
1	372-1009010	CRANKCASE OIL TRAY ASSY.	1
2	Q1420612	BOLT-OIL DRIP GROOVE ASSEMBLY	17
3	372-1009017	SEALING WASHER-DRAIN PLUG	1
4	372-1009014	DRAIN PLUG	1



E-25 CASE & COMPONENT

REF NO.	(PART NO.)	DESCRIPTION	REGD NO.
1	QR512-1701101	CLUTCH HOUSING	1
2	QR512-1701111	TRANSMISSION SHELL	1
3	QR512-1701120	REAR COVER	1
4	QR512-1602101	RELEASING BEARING ASSEMBLY	1
5	QR512-1602210	RELEASING SHIFT FORK ASSEMBLY	1
6	QR512-1602227	RELEASING SHIFT FORK REAR BUSH	1
7	QR512-1602237	dustproof oil seal - RELEASING SHIFT FORK ASSEMBLY	2
8	QR512-1602226	RELEASING SHIFT FORK FRONT BUSH	1
9	QR512-1701103	DUAL END STUDS-CLUTCH SHELL AND TRANSMISSION SHELL	2
10	Q1840835	BOLT AM8X35	12
11	QR512-1701188	LOCATION PIN-CLUTCH SHELL AND TRANSMISSION SHELL	2
12	F6N6-SMD728088	OIL FILL PLUG SCREW	1

13	F6N6-SMD000312	OIL FILL PLUG SCREW WASHER	2
14	S11-3729011	REVERSING SWITCH ASSEMBLY	1
15	QR512-1701185	DUAL END STUDS	1
16	QR512-1701183	REAR BEARING BAFFLE	1
17	QR512-1701194	OIL BAFFLE PLATE	1
18	CQ1420612	BOLT M6X12	4
19		WASHER6	4
20	QR512-1701190	FUEL TANK ASSEMBLY	1
21	QR512-1602112	CLUTCH TURNING ARM	1
22	Q1840835	BOLT AM8X35	1
23	CQ32608	NUT M8	1
24	MF140203	BOLT-REAR COVER	10
25	QR512-1602113	RELEASING TURN TORSIONAL SPRING	1



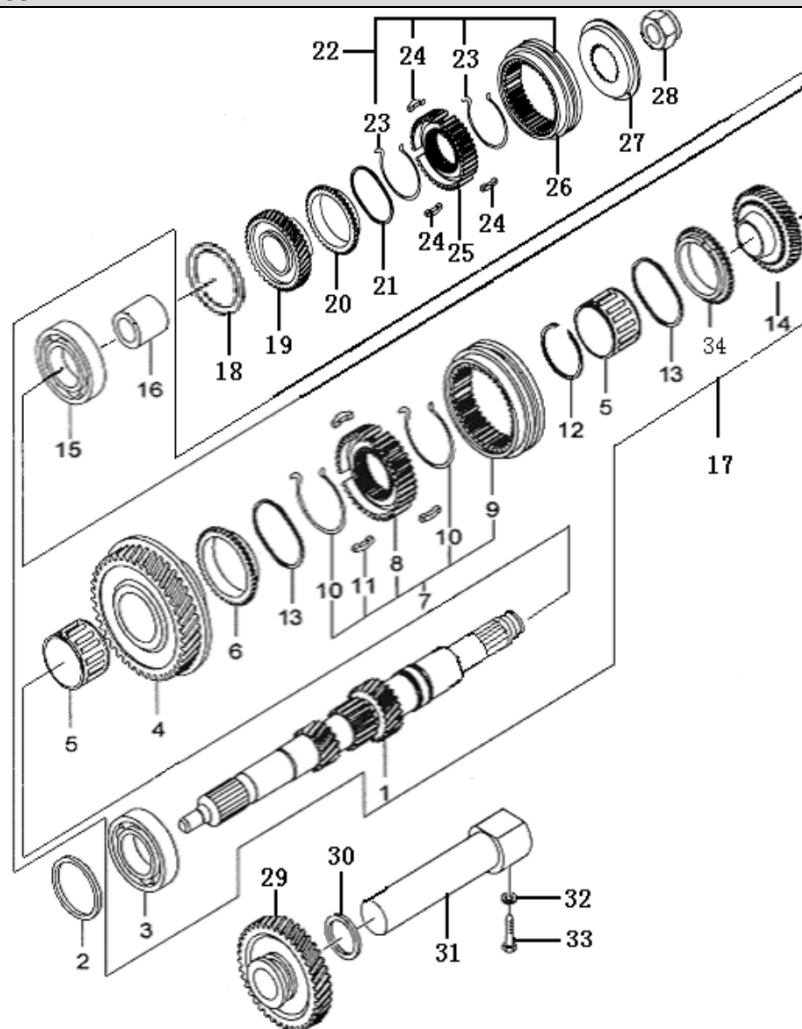
E-26 OUTPUT SHAFT ASSEMBLY

REF NO.	(PART NO.)	DESCRIPTION	REGD NO.
1	QR512-1701401	OUTPUT SHAFT	1
2	QR512-1701410A	FIRST DRIVEN GEAR ASSEMBLY	1
3	QR512-1701420A	SECOND DRIVEN GEAR ASSEMBLY	1
4	QR512-1701441	THIRD DRIVEN GEAR	1
5	QR512-1701461	FOURTH DRIVEN GEAR	1
6	QR512-1701131	OUTPUT SHAFT FRONT TAPER BEARING	1

7	QR512-1701422	FIRST AND SECOND GEAR NEEDLE BEARING	2
8	QR512-1701439	FIRST AND SECOND GEAR SYNCHRO RING	2
9	QR512-1701437A	FIRST AND SECOND GEAR SYNCHRO ADAPTOR RING	2
10	QR512-1701435	FIRST AND SECOND GEAR SYNCHRO INNER RING	2
11	QR512-1701495(ATV)	FIRST AND SECOND GEAR SYNCHRO ASSEMBLY	1
12	QR512-1701495(ATV)	FIRST AND SECOND GEAR SYNCHRO steel wire spring	1
13		FIRST AND SECOND GEAR SYNCHRO transmission hub	1
14		FIRST AND SECOND GEAR SYNCHRO	1
15		FIRST AND SECOND GEAR slipper	3
16	QR512-1701438	FIRST AND SECOND GEAR SYNCHRO RETAINER RING	1
17	QR512-1701462	THIRD AND FOURTH GEAR GEAR SPACER BUSH	1
18	QR512-1701402	OUTPUT SHAFT REAR TAPER BEARING	1
19	QR512-1701187 AB	ADJUSTING WASHER - OUTPUT SHAFT REAR TAPER BEARING	AS REQUEST
19	QR512-1701187 AC	ADJUSTING WASHER - OUTPUT SHAFT REAR TAPER BEARING	AS REQUEST
19	QR512-1701187 AD	ADJUSTING WASHER - OUTPUT SHAFT REAR TAPER BEARING	AS REQUEST
20	QR512-1701481(ATV)	FIFTH DRIVEN GEAR WHEEL	1
21	QR512-1701482	IMPACTION NUT-FIFTH IDLED GEAR	1
22		OUTPUT SHAFT ASSEMBLY	1

E-27

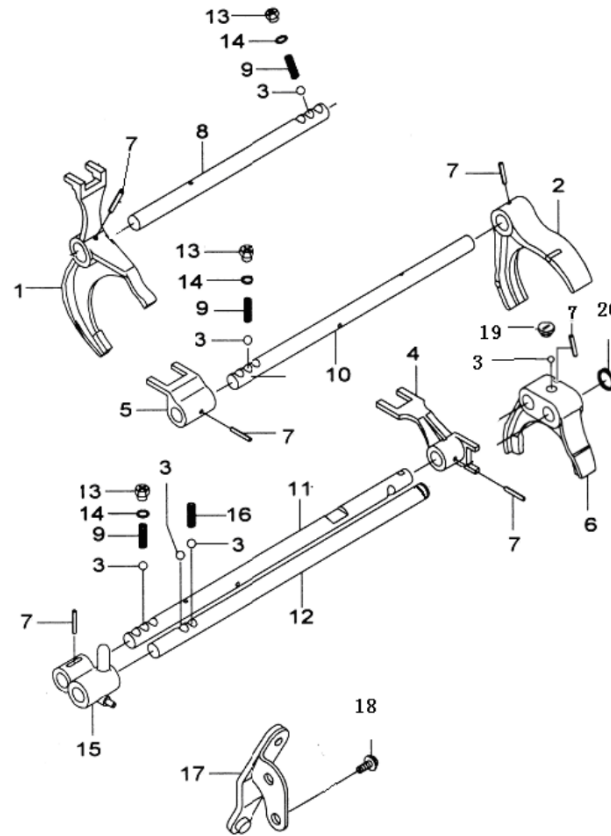
INPUT SHAFT ASSEMBLY & REVERSING SHAFT ASSEMBLY



E-27 INPUT SHAFT ASSEMBLY & REVERSING SHAFT ASSEMBLY

REF NO.	(PART NO.)	DESCRIPTION	REGD NO.
1	QR512-1701201(ATV)	INPUT SHAFT	1
2	QR512-1701151	OIL SEAL FOR INPUT SHAFT	1
3	QR512-1701202	INPUT SHAFT FRONT BEARING	1
4	QR512-1701240(ATV)	THIRD DRIVE GEAR ASSEMBLY	1
5	QR512-1701283	GEAR NEEDLE BEARING	2
6	QR512-1701257AC(ATV)	THIRD, FOURTH AND FIFTH GEAR SYNCHRO RING	1

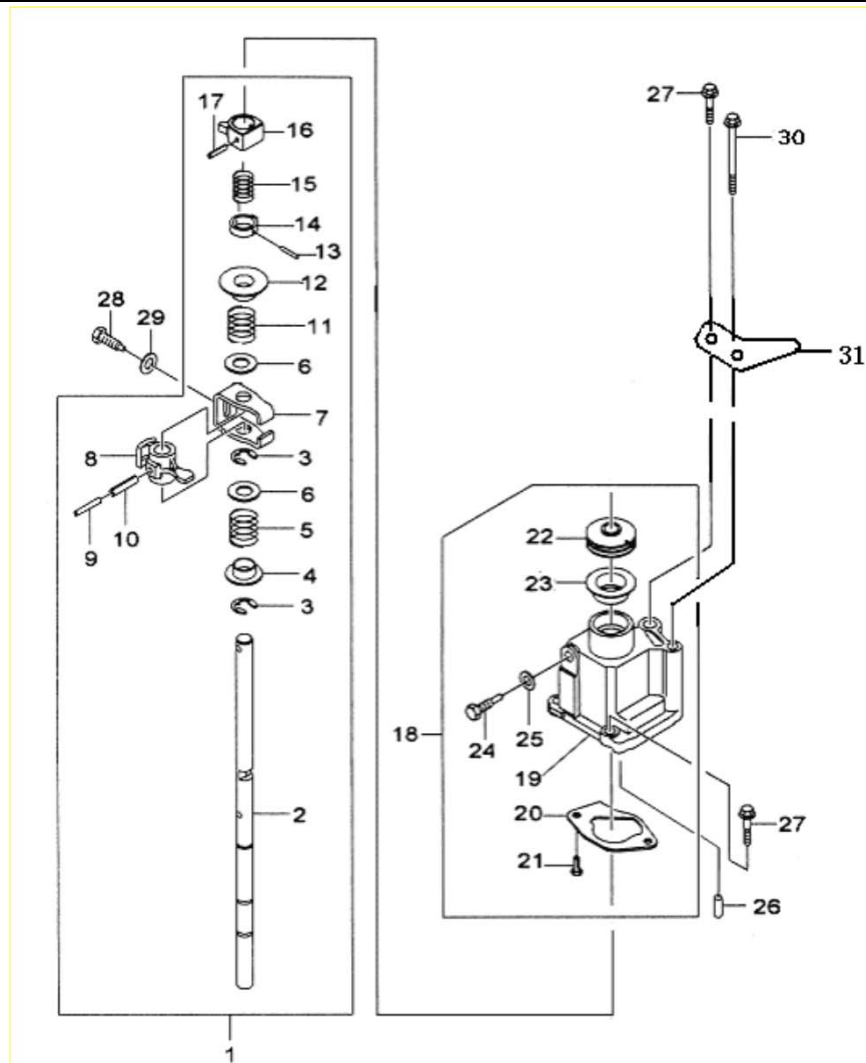
7	QR512-1701250(ATV)	THIRD AND FOURTH GEAR SYNCHRO ASSEMBLY	1
8	QR512-1701250(ATV)	HUB GEAR FOR THIRD AND FOURTH GEAR SYNCHRO	
9		SLEEVE GEAR FOR THIRD AND FOURTH GEAR SYNCHRO	
10		SPRING FOR THIRD AND FOURTH GEAR SYNCHRO	
11		GUIDE SHOE FOR THIRD AND FOURTH GEAR SYNCHRO	
12	QR512-1701256	THIRD AND FOURTH GEAR SYNCHRO RETAINER RING	1
13	QR512-1701258	THIRD, FOURTH AND FIFTH GEAR SYNCHRO RING CUSHIONING PLATE	1
14	QR512-1701260(ATV)	FOURTH DRIVE GEAR ASSEMBLY	1
15	QR512-1701203	INPUT SHAFT REAR BEARING	1
16	QR512-1701282(ATV)	FIFTH GEAR GEAR BUSHING	1
17		INPUT SHAFT ASSEMBLY	1
18	QR512-1701295-AA	INPUT SHAFT ADJUSTING WASHER(0.1mm)	AS REQUEST
18	QR512-1701295-AB	INPUT SHAFT ADJUSTING WASHER(0.2mm)	AS REQUEST
18	QR512-1701295-AC	INPUT SHAFT ADJUSTING WASHER(0.3mm)	AS REQUEST
19	QR512-1701280(ATV)	FIFTH GEAR DRIVE GEAR ASSEMBLY	1
20	QR512-1701257AC(ATV)	THIRD, FOURTH AND FIFTH GEAR SYNCHRO RING	3
21	QR512-1701258	THIRD, FOURTH AND FIFTH GEAR SYNCHRO RING CUSHIONING PLATE	3
22	QR512-1701290(ATV)	FIFTH GEAR SYNCHRO ASSEMBLY	1
23	QR512-1701290(ATV)	SPRING FOR FIFTH GEAR SYNCHRO	2
24		GUIDE SHOE FOR FIFTH GEAR SYNCHRO	3
25		HUB GEAR FOR FIFTH GEAR SYNCHRO	1
26		SLEEVE GEAR FOR FIFTH GEAR SYNCHRO	1
27	QR512-1701294(ATV)	FIFTH GEAR SYNCHRO BAFFLE	1
28	QR512-1701296AA(ATV)	FIFTH GEAR SYNCHRO RETAINER RING	1
29	QR512-1701710(ATV)	IDLER WHEEL ASSEMBLY	1
30	QR512-1701731	PIASTIC CUSHION FOR REVERSE IDLER GEAR	1
31	QR512-1701720	IDLER WHEEL SHAFT GEAR ASSEMBLY	1
32	QR512-1702229	WASHER --- REVERSE GEAR LOCK SCREW	1
33	QR512-1701733	PINCHING SCREW FRO IDLER GEAR	1



E-28 SHIFT FORK & SHIFT FORK SHAFT

REF NO.	(PART NO.)	DESCRIPTION	REGD NO.
1	QR512-1702311	FIRST AND SECOND GEAR SHIFT FORK	1
2	QR512-1702321	THIRD AND FOURTH GEAR SHIFT FORK	1
3	GB308-86 Sφ7.9375	BALL	6
4	QR512-1702332	FIFTH REVERSE GEAR SHIFT FORK	1
5	QR512-1702322	THIRD AND FOURTH GEAR SHIFT FORK	1
6	QR512-1702331	SHIFT FORK --- FIFTH GEAR	1
7	QR512-1702412	PIN 4.5X20	6
8	QR512-1702411	FORK SHAFT --- FIRST AND SECOND GEAR	1
9	QR512-1702511	LOCATING SPRING-FIRST, SECOND, THIRD AND FOURTH GEAR SHAFT	3
10	QR512-1702421	FORK SHAFT --- THIRD AND FOURTH GEAR	1
11	QR512-1702431	FORK SHAFT --- FIFTH GEAR	1

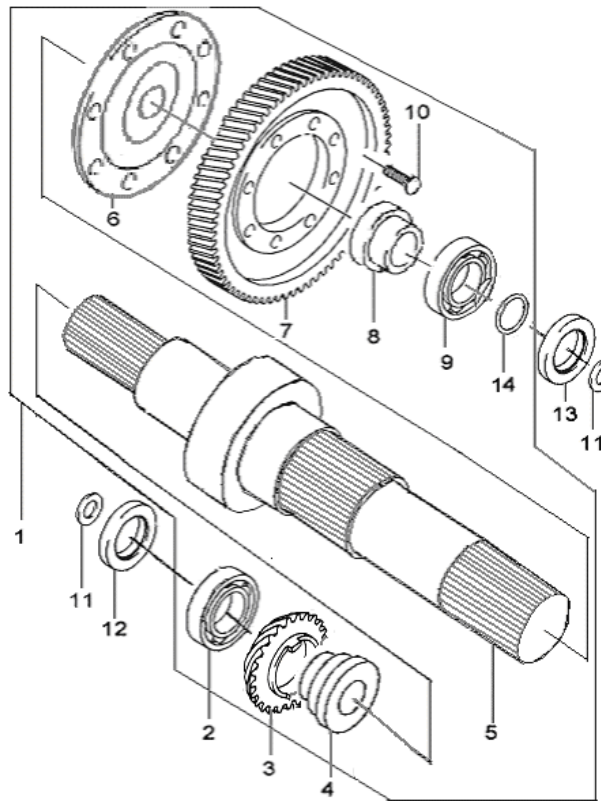
12	QR512-1702441	FORK SHAFT --- REVERSE GEAR	1
13	QR512-1702513	FORK SHAFT LIMITING PLUG SCREW	3
14	QR512-1702512	WASHER --- FORK SHAFT LIMITING PLUG SCREW	3
15	QR512-1702341	FORK PIN --- REVERSE GEAR	1
16	QR512-1702518	SPRING---REVERSE FORK SHAFT LOCATING SPRING	1
17	QR512-1702340	REVERSE SHIFT FORK ASSY	1
18	QR512-1702228	REVERSE GEAR LOCK SCREW	1
19	QR512-1702516	PLUG---5TH SPEED SHIFT FORK DRIVER BALL	1
20	QR512-1702514	FIXING CLIP ---REVERSE FORK SHAFT	1



E-29 SHIFT OPERATION ASSEMBLY

REF NO.	(PART NO.)	DESCRIPTION	REGD NO.
1		SHIFT SHAFT ASSEMBLY	1
2	QR512-1702211	SHIFT SHAFT	1
3	QR512-1702214	SNAP RING---SHIFT LINKAGE BAFFLE	3
4	QR512-1702217	FIRST AND SECOND RETURN SPRING SEAT	1
5	QR512-1702216	FIRST AND SECOND RETURN SPRING	1

6	QR512-1702218	SPRING BAFFLE-SECOND AND FIFTH RETURN SPRING	2
7	QR512-1702213	SHIFT LINKAGE BAFFLE	1
8	QR512-1702212A	SHIFT OPTIONAL ARM	1
9	GB/T879.1-86 4X30	SPRING PIN 4X30-SHIFT OPTIONAL ARM	1
10	GB/T879.1-86 6*28	SHIFT OPTIONAL ARM HOLDINGPIN-SHIFT OPTIONAL ARM	1
11	QR512-1702219	FIFTH AND REVERSE GEAR RETURN SPRING	1
12	QR512-1702221	FIFTH REVERSE GEAR SPRING SEAT	1
13	GB/T879.1-2000 3*22	PIN 3X22	1
14	QR512-1702230A	MULTIFUNCTIONAL SWITCH ASSEMBLY	1
15	QR512-1702223	REVERSE GEAR LIMIT TORSIONAL SPRING	1
16	QR512-1702222	REVERSE LOCKING PIECE	1
17	GB/T879.1-2000 5*22	PIN 5X22	1
18		SHIFT OPTIONAL SHAFT BOX ASSEMBLY	1
19	QR512-1702101	SHELL OF REVESE HANDLING SYSTEM	1
20	QR512-1702224	BAFFLE--- FIFTH AND REVERSE GEAR RETURN SPRING SEAT	1
21	MF140203	BOLT	10
22	QR512-1702227	SHIFT OPTIONAL SHAFT DUSTPROOF SEALING	1
23	QR512-1702226	SHIFT OPTIONAL SHAFT DUST COVER	1
24	QR512-1702228	REVERSE GEAR LIMIT BOLT	1
25	QR512-1702229	REVERSE GEAR LIMIT BOLT WASHER	1
26	QR512-1702103	PIN B6X12	2
27	MF140227	BOLT	4
28	QR512-1702104	GEAR SHIFTING LIMIT BOLT	1
29	F6N6-SMD720603	WASHER --- REVERSE GEAR LOCK SCREW	1
30	Q1840875	BOLT AM8X75	1
31	QR512-1702656	HANGING HOOK	1

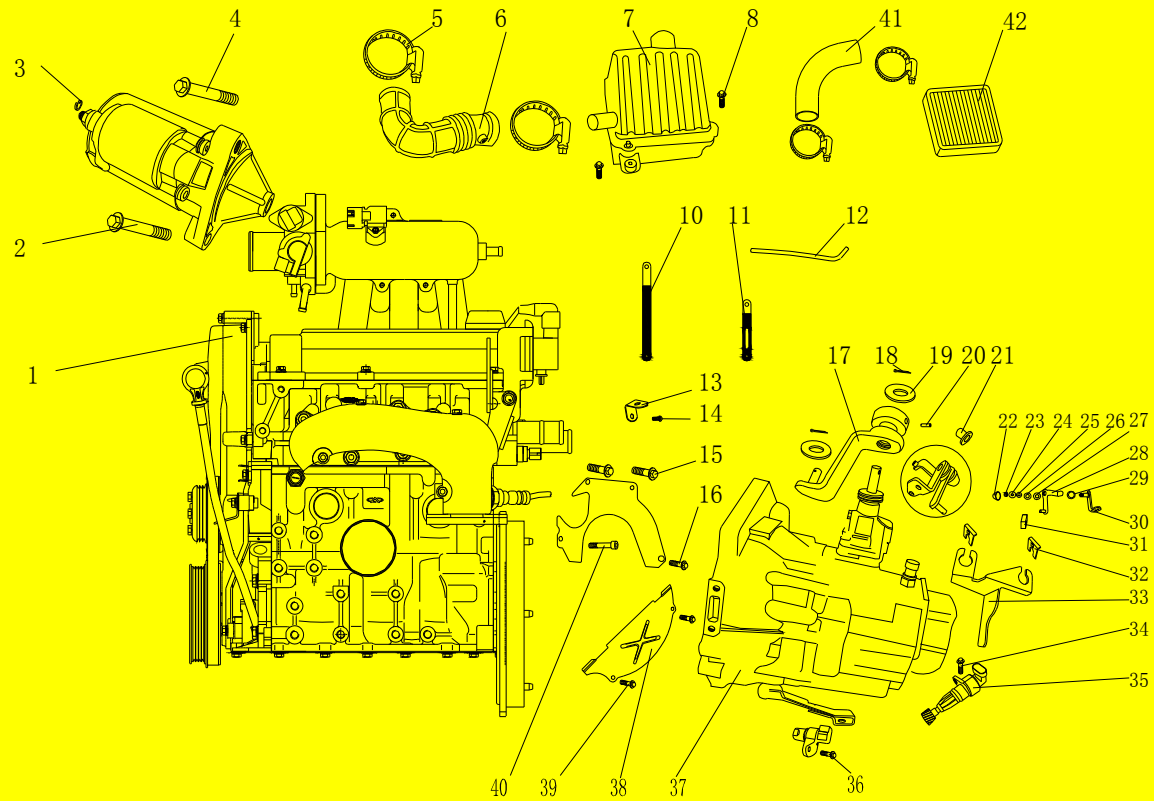
E-30
MAIN REDUCING GEAR DRIVEN PULLEY ASSEMBLY

E-30 MAIN REDUCING GEAR DRIVEN PULLEY ASSEMBLY

REF NO.	(PART NO.)	DESCRIPTION	REGD NO.
1		MAIN REDUCING GEAR DRIVEN PULLEY ASSEMBLY	1
2	QR512-1701602	DIFFERENTIAL FRONT BEARING	1
3	QR512-1701604	ODOMETER DRIVING GEAR	1
	YFATV-01/5T07D1A0100	DRIVE ASSEMBLY (INCLUDING THE 4、5、6、8 BLOW)	1
4	YFATV-01/5T07D1A0100	OUTPUT SHAFT FRONT SLEEVE	1
5		DRIVE SHAFT	1
6		CONNECTING PLATE	1
8		OUTPUT SHAFT REAR SLEEVE	1
7	QR512-1701611 (ATV)	MAIN REDUCING GEAR DRIVEN PULLEY (75)	1
9	QR512-1701603	DIFFERENTIAL REAR BEARING	1

10	QR512-1701606	HEXAGON FLANGE FACING BOLT	8
12	QR512-1701152	FRONT OIL SEAL OF DIFFERENTIAL GEAR	1
13	QR512-1701153	REAR OIL SEAL OF DIFFERENTIAL GEAR	1
14	QR512-1701187-AB	ADJUSTING WASHER(0.1mm)	AS REQUEST
14	QR512-1701187-AC	ADJUSTING WASHER(0.2mm)	AS REQUEST
14	QR512-1701187-AD	ADJUSTING WASHER(0.5mm)	AS REQUEST

FRAME SECTION

F-1 ENGINE

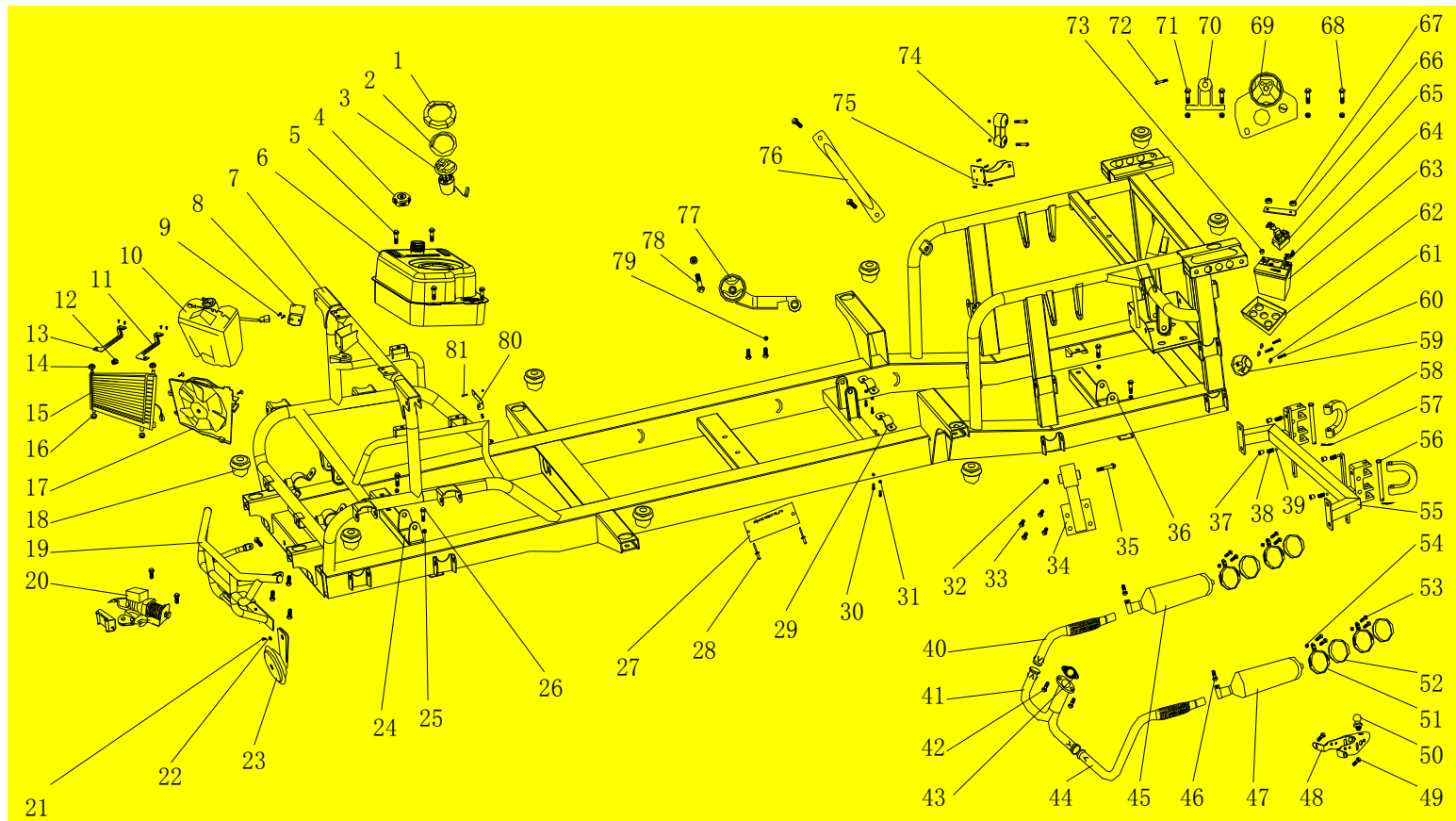


F-1 ENGINE

REF NO.	(PART NO.)	DESCRIPTION	REGD NO.
1	38851010000000	ENGINE SQR372(800CC)	1
2	GB/T5789-1986	HEXAGON FLANGE FACING BOLT M8×45(STRENGTHENING SCREW BOLT)	1
3	GB/T93-1987	STANDARD TYPE SPRING WASHER 8	1
4	GB/T5789-1986	HEXAGON FLANGE FACING BOLT M8×50(STRENGTHENING SCREW BOLT)	1
5	35811800001000	AIR FILTER CLAMP φ65	4
6	38811800000100	AIR FILTER CONNECTING TUBE	1
7	38851800000000	AIR FILTER COMPONENT (QQ0.8FRONT PART)	1
8	GB/T5789-1986	HEXAGON FLANGE FACING BOLT M8×30	2
10	38831020002000	ENGINE WIRE CLAMP2	3
11	38831020001000	ENGINE WIRE CLAMP1	2

12	38851800001100	CASE OIL PIPE	1
13	38831020003000	COD SENSOR BRACKET	1
14	GB/T5789-1986	HEXAGON FLANGE FACING BOLT M8X10	1
15	GB/T16674-1996	HEXAGON FLANGE FACING BOLT M12X1.75X40(STRENGTHENING SCREW BOLT)	2
16	GB/T5789-1986	HEXAGON FLANGE FACING BOLT M12X1.25X45(STRENGTHENING SCREW BOLT)	1
17	38853130601100	SHIFT SUSPENSION FORK	1
18	GB/T91-2000	COTTER PIN 1.6×14	2
19	GB/T96.1-2002	BIG WASHER φ8.5×φ24×2	2
20	GB/T879.1-2000	ELASTIC CYLINDRICAL PIN	1
21	38833130600300	SHIFT BRACKET COPPER BUSH	1
22	38833130600500	SHIFT BRACKET RUBBER COVER	1
23	38833130601600	SELF-TAPPING NUT M8	1
24	38833130601700	FLAT WASHER8	1
25	GB/T 96.1-2002	BIG WASHER 8	1
26	38833130601400	BIG WASHER 12	1
27	38833130601800	FLAT WASHER 12	1
28	38853130600200	SHIFT BRACKET COMPONENT(2)	1
29	38833130600400	SHIFT BRACKET RUBBER COVER	1
30	38853130600100	SHIFT BRACKET COMPONENT(1)	1
31	38833130601300	SLIDE ROD	1
32	38833130601500	CLIP	2
33	38853130601200	SHIFT CABLE FIXING BRACKET	1
34	GB/T5789-1986	HEXAGON FLANGE FACING BOLT M6X16	1
35	38811010000200	ODOMETER SENSOR	1
36	GB/T5789-1986	HEXAGON FLANGE FACING BOLT M6X16	1
37	38851010001000	TRANSMISSION CASE (YFATV-01)	1
	38851010001000	TRANSMISSION CASE (5T07D1)	1
38	38811010001600	TRANSMISSION CASE LOWER GASKET	1
39	GB/T5789-1986	HEXAGON FLANGE FACING BOLT M6X16	2
40	GB/T70.1-2000	INNER HEXAGON FLAT HEAD BOLT M12X1.75X50	1
41	38851800000200	INTAKE TUBE	1
42	38811800010000	AIR FILTER CARTRIDGE	1

CHASSIS SYSTEM



F-2 CHASSIS SYSTEM

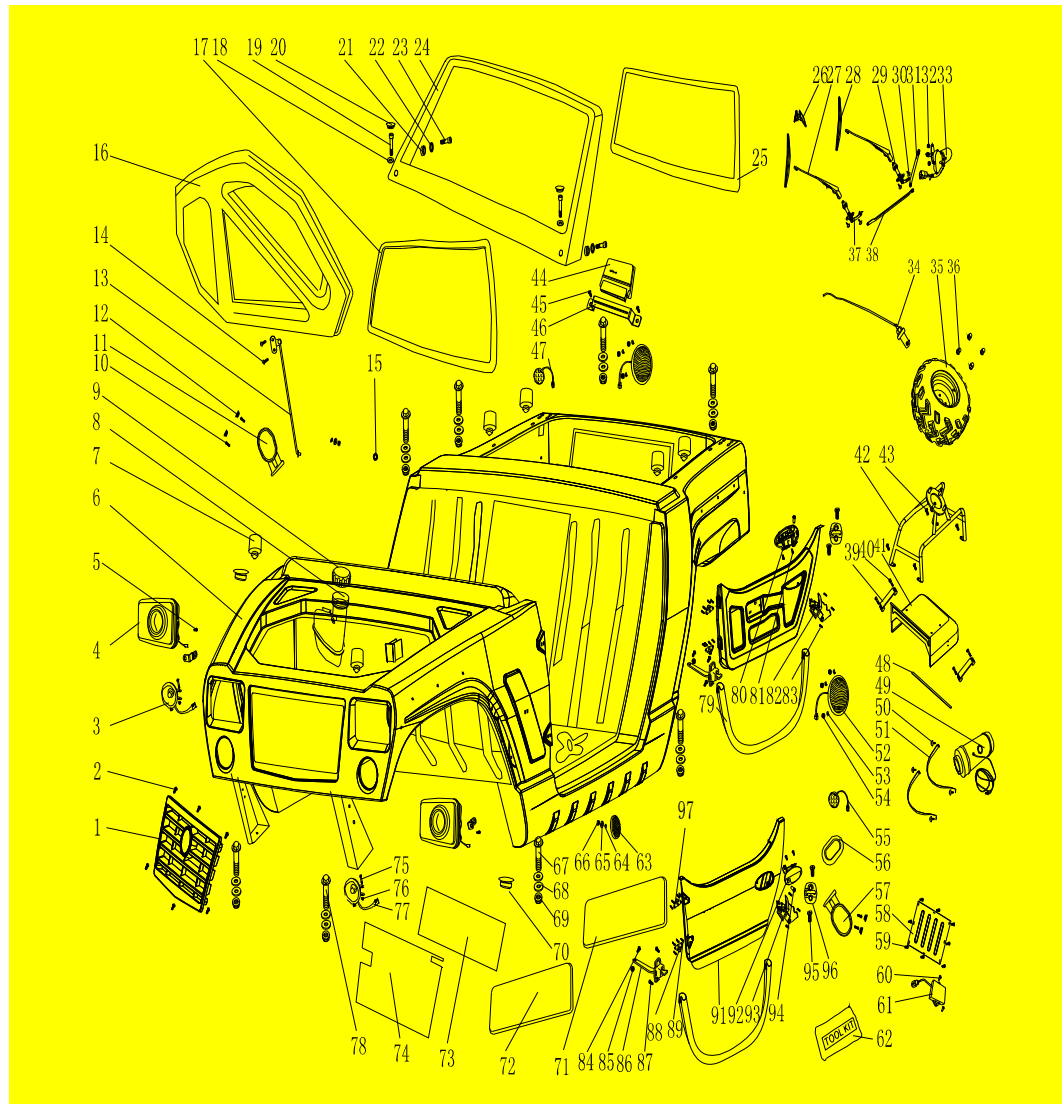
REF NO.	(PART NO.)	DESCRIPTION	REGD NO.
1	38830801000200	OIL PUMP FIXING COVER	1
2	38808010000100	ELECTRONIC PUMP SEAL CUSHION	1
3	38830000003000	ELECTRONIC OIL PUMP	1
4	34500802000000	FUEL TANK COVER	1
5	GB/T5789-1986	HEXAGON FLANGE FACING BOLT M8X16	16
6	38850801000000	FUEL TANK	1
7	38870200000000	CHASSIS ASSEMBLY	1
	38860200000000	CHASSIS ASSEMBLY	1
8	38802000310000	WIPER KETTLE SUPPORTING	1
9	GB/T5789-1986	HEXAGON FLANGE FACING BOLT M6X14	2
10	38802000290000	WIPER KETTLE	1

11	38870201000800	RADIATOR LEFT UPPER BRACKET	1
12	38831308100100	PLUG	1
13	38870201000700	RADIATOR RIGHT UPPER BRACKET	1
14	38800000006000	RADIATOR RUBBER CUSHION 1	2
15	38871301000000	RADIATOR ASSEMBLY (PURE ALUMINUM)	1
16	38800000007000	RADIATOR RUBBER CUSHION 2	2
17	38831308000000	FAN ELECTROMOTOR	1
18	38831010002000	TRUCK BED CUSHION COLLAR	8
19	38870201100000	FRONT BUMPER WELDING ASSY	1
	38870200100000	FRONT BUMPER WELDING ASSY(PJM)	1
20	38831108600010	ELECTRONIC WINCH COMPONENT 3000LBS	1
	38830200200000	PJM WINCH ASSY	1
21	GB/T5789-1986	HEXAGON FLANGE FACING BOLT M6X16	2
22	GB/T93-1987	STANDARD TYPE SPRING WASHER 6	1
23	345009090000E	LOUDSPEAKER	1
24	38850201300000	LOWER WELDMENT OF MOUNTING FRAME OF FRONT AXLE	1
25	GB/T6187.1-2000	ALL-METAL HEXAGON FLANGE FACING LOCKNUT M10×1.25	9
26	GB/T5789-1986	HEXAGON FLANGE FACING BOLT M10X1.25X45(STRENGTHENING SCREW BOLT)	6
27	38830000070000	NAMEPLATE	1
28	GB/T12618-1990	SELF-PLUGGING RIVET Φ3.2×7	2
29	34603000007000	RETAINING CLIP	2
30	GB/T5789-1986	HEXAGON FLANGE FACING BOLT M6X30	4
31	GB/T6187.1-2000	ALL-METAL HEXAGON FLANGE FACING LOCKNUT M6	7
32	GB/T6187.2-2000	ALL-METAL HEXAGON FLANGE FACING LOCKNUT M12X1.25	3
33	GB/T16674-1996	HEXAGON FLANGE FACING BOLT M10X1.5X20(STRENGTHENING SCREW BOLT)	8
34	38851010020200	ENGINE RIGHT BUFFER RUBBER CUSHION (4WD)	1
35	GB/T5789-1986	HEXAGON FLANGE FACING BOLT M12X1.25X85	3
36	38850201400000	LOWER WELDMENT OF MOUNTING FRAME OF REAR AXLE	1
37	GB71-85	SLOTTED SET SCREWS WITH CONE POINT	4
38	GB/T2089-1994	HOLDDOWN SPRING	4
39	38830210001000	STEEL BALL φ10	4
40	38851709000000	RIGHT CONNECTING PIPE OF MUFFLER	1
	38851201103003	RIGHT CONNECTING PIPE OF MUFFLER (STAINLESS)	1
41	38851703000000	MUFFLER Y-PIPE	1
	38851201103001	MUFFLER Y-PIPE(STAINLESS STEEL)	1
42	GB/T16674-1996	HEXAGON FLANGE FACING BOLT M10X1.5X25 (STRENGTHENING SCREW BOLT)	2
43	38831702000000	MUFFLER CUSHION	1
44	38851708000000	LEFT CONNECTING PIPE OF MUFFLER	1

	38851201103002	LEFT CONNECTING PIPE OF MUFFLER (STAINLESS)	1
45	38831707000000	MUFFLER COMPONENT-R	1
	38851201109000	MUFFLER COMPONENT-R(ALLOY COVER)	1
46	GB/T5789-1986	HEXAGON FLANGE FACING BOLT M8X30	2
47	38851701000000	MUFFLER COMPONENT-L	1
	38851201108000	MUFFLER COMPONENT-L(ALLOY COVER)	1
48	38850201600000	WELDMENT OF MOUNTING FRAME OF HITCH BALL	1
49	GB/T5789-1986	HEXAGON FLANGE FACING BOLT M10X1.25X25(STRENGTHENING SCREW BOLT)	4
50	34613200000000	TOW BALL	1
51	35711705000000	MUFFLER CLAMP	4
	38831201104000	MUFFLER CLAMP(STAINLESS IRON)	4
52	35711706000000	MUFFLER CLAMP RUBBER GASKET	4
53	GB/T5789-1986	HEXAGON FLANGE FACING BOLT M8X1.25X20	10
54	GB/T6187.1-2000	ALL-METAL HEXAGON FLANGE FACING LOCKNUT M8	4
55	38850201200000	WELDMENT OF MOUNTING FRAME OF REAR PROTECT COVER	1
56	GB/T882-1986	PIN ROLL 10X115	2
57	GB/T91-2000	COTTER PIN 2.5X20	2
58	38800210000000	HOOK ATTACHMENT FOR TRAILER	2
59	38830210002000	TRAILER CONNECTOR	1
60	GB/T93-1987	STANDARD TYPE SPRING WASHER5	3
61	GB/T823-1988	CROSS RECESSED SCREW M5X35	3
62	35910000073000	STORAGE BATTERY SHOCK PAD	1
63	38800912000000	STORAGE BATTERY (12V36Ah)	1
64	38833701011000	ANODE BUTT COVER	1
65	38833701012000	A11-3723025 FUSE	1
66	38802000014100	BATTERY BOX COMPONENT PRESSBOARD	1
67	GB/T6172.1-2000	HEXAGON THIN NUT M10X1.25	2
68	GB/T5789-1986	HEXAGON FLANGE FACING BOLT M10X1.25X50(STRENGTHENING SCREW BOLT)	2
69	38851010020100	ENGINE REAR BUFFER (4WD)	1
70	38850201000200	ENGINE REAR HANGING FIXING SEAT	1
71	GB/T5789-1986	HEXAGON FLANGE FACING BOLT M10X1.25X55(STRENGTHENING SCREW BOLT)	2
72	GB/T5789-1986	HEXAGON FLANGE FACING BOLT M14×1.5×60	1
73	38900300015000	BATTERY CLAMP (POSITIVE)	1
74	38811010020100	ENGINE REAR BUFFER	1
75	38830201000200	ENGINE REAR HANGING FIXING SEAT	1
76	38850201501000	UPPER SUPPORT COLUMN OF ENGINE	1

77	38851010020000	ENGINE FRONT BUFFER (4WD)	1
78	GB/T5789-1986	HEXAGON FLANGE FACING BOLT M10X1.25X90(STRENGTHENING SCREW BOLT)	1
79	GB/T6187.1-2000	ALL-METAL HEXAGON FLANGE FACING LOCKNUT M10X1.5	1
80	38833130700100	PROPORTIONAL VALVE FIXED PLATE	1
81	GB/T5789-1986	HEXAGON FLANGE FACING BOLT M6X40	1

F-3
FRAME SYSTEM



F-3 FRAME SYSTEM

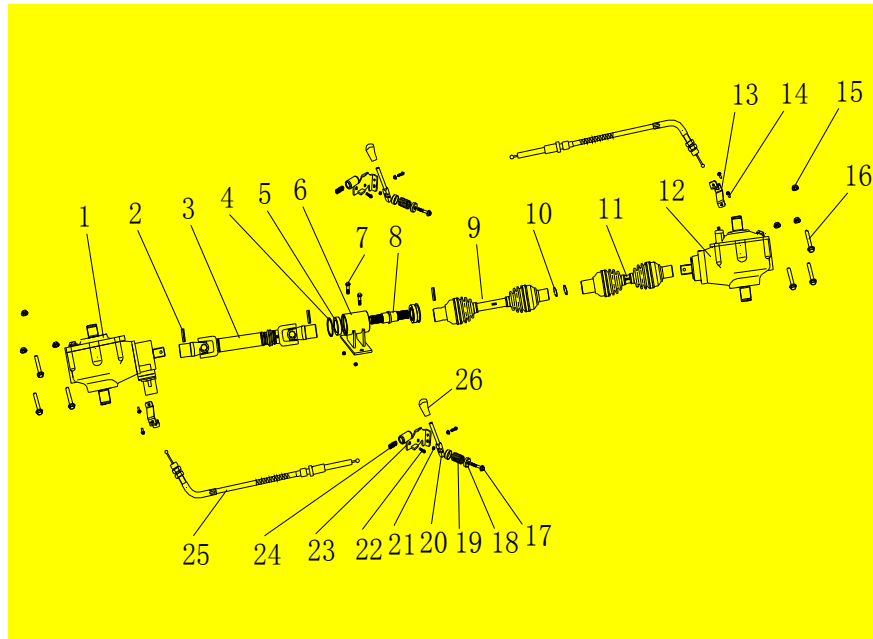
REF NO.	(PART NO.)	DESCRIPTION	REGD NO.
1	38871500022000	FRONT WIND GRID	1
2	GB/T5789-1986	HEXAGON FLANGE FACING BOLT M5×9	6
3	38800906000000	FRONT RIGHT TURN LIGHT	1
4	38870911000000	HEADLIGHT (LED BLUE)	2
	38870911000000	HEADLIGHT (LED W)	2
	38870911001000	LAMP BULB	2

	38870911000000A	HEADLIGHT (EEC DEDICATED)	2
5	GB/T5789-1986	HEXAGON FLANGE FACING BOLT M8×14	2
6	38870300000000	UNDERBODY COMPONENT	1
7	38831107550000	FRONT COVER RUBBER CUSHION	2
8	38832204002000	RESERVOIR	1
9	38832204001000	RESERVOIR COVER	1
10	GB/T70.2-2000	INNER HEXAGON FLAT HEAD BOLT M8×25	4
11	38831902000021	RIGHT SIDE MIRROR(WITH LIGHT)	1
	38831902000020	RIGHT SIDE MIRROR(CHROMEPLATE)	1
	38831902000021-3	LEFT SIDE MIRROR DAMPING PADS	1
12	38831902006000	REAR MIRROR RUBBER STOPPER	4
13	38831107560000	FRONT COVER SUPPORT ROD	1
14	GB/T823-1988	CROSS RECESSES FLAT HEAD BOLT M6X12	2
15	38811010010500	CABLE CONDUCTOR THREAD CUSHION	1
16	38830300020000	FRONT COVER	1
17	38802000250000	WINDSCREEN RUBBER BELT	1
18	GB/T96.1-2002	BIG WASHER φ8.5×φ24×2	2
19	GB/T70.1-2000	INNER HEXAGON CAP HEAD SCREW M8×25	2
20	38802000201000	RUBBER STOPPER	2
21	38830302001000	WINDSCREEN BRACKET RUBBER GASKET	2
22	GB/T 97.3-2000	FLAP GASKET8(STAINLESS STEEL)	2
23	GB/T70.1-2000	HEXAGON SOCKET HEAD CAP SCREW M8X25(STAINLESS STEEL)	2
24	38830302000000	FRONT WINDSHIELD SUPPORT ASSEMBLY	1
25	38802000240000	WINDSCREEN	1
26	38831902007000	INSIDE REARVIEW MIRROR	1
27	38832000280000	WIPER BLADE ARM	2
28	38832000270000	WIPER BLADE	2
29	38832000330000	WIPER BRACKET BASE (VICE)	1
30	GB/T823-1988	CROSS RECESSED SCREW M6X16	4
31	38832000350000	WIPER BRACKET 2	1
32	GB/T6187.1-2000	ALL-METAL HEXAGON FLANGE FACING LOCKNUT M6	2
33	38832000260000	WIPER MOTOR	1
34	38802000300000	WIPER INJECTOR	1
35	38810401000000	FRONT LEFT WHEEL ASSY.	1
36	34500000076000	FASTENING NUT M10X1.25	2
37	38832000320000	WIPER BRACKET BASE (MAIN)	1
38	38832000340000	WIPER BRACKET1	1
39	38830300012000	REAR COVER HANDLE	2
40	GB/T70.1-2000	HEXAGON SOCKET HEAD CAP SCREW M8X25(STAINLESS STEEL)	4
41	38850300010000	REAR COVER	1
42	38850201012700	SPARE TIRE FASTENING BRACKET COMP.	1

43	GB/T5789-1986	HEXAGON FLANGING FACING BOLT M8X25	4
44	38811010000400	ECU	1
45	GB/T5789-1986	HEXAGON FLANGE FACING BOLT M8X16	2
46	38830201002700	ECU FIXING BOARD	1
47	38810908000000	REAR RIGHT TURN LIGHT	1
48	38830300011000	REAR COVER SEAL	540mm
49	38852100270000	WOOFER	1
50	GB/T823-1988	CROSS RECESSES BOLT M6X20	4
51	38850201009000	WOOFER CLAMP CONNECTOR	2
52	38830910000000	TAILLIGHT STOPLIGHT	2
53	38830201004000	REAR TAIL LIGHT BRACKET	6
54	GB/T6187.1-2000	HEXAGON FLANGE FACING LOCKNUT M5	6
55	38810907000000	REAR LEFT TURN LIGHT	1
56	38833130800000	CABLE RUBBER CUSHION	4
57	38831901000021	LEFT SIDE MIRROR(WITH LIGHT)	1
	38831901000020	LEFT SIDE MIRROR(CHROMEPLATE)	1
	38831901000021-3	LEFT SIDE MIRROR DAMPING PADS	1
58	38851020006000	ENGINE PROTECTIVE BOARD	1
59	GB/T5789-1986	HEXAGON FLANGE FACING BOLT M8X20	8
	35810911000000	RELAY OF THE 4WD	2
62	38830600001000	TOOL BOX	1
63	345042000000E	SIDE FRONT REFLECTION SHEET	2
64	GB/T93-1987	STANDARD TYPE SPRING WASHER6	2
65	GB/T97.1-2002	WASHER6	2
66	GB/T6170-2000	1-TYPE HEXAGON NUT M6	2
67	GB/T5789-1986	HEXAGON FLANGE FACING BOLT M10X1.25X75(STRENGTHENING SCREW BOLT)	6
68	GB/96.1-2002	WASHER $\phi 10 \times \phi 30 \times 2.5$	16
69	GB/T6187.2-2000	ALL-METAL HEXAGON FLANGE FACING LOCKNUT M10X1.25	8
70	38831902006000	REARVIEW MIRROR RUBBER STOPPER	2
71	38800000032000	MAT L	1
72	38800000032100	MAT R	1
73	38850300050000	UNDERBODY LEFT RUBBER SHEET	1
74	38850300060000	UNDERBODY RIGHT RUBBER SHEET	1
75	GB/T5789-1986	HEXAGON FLANGE FACING BOLT M6X16	4
76	GB/T6187.1-2000	ALL-METAL HEXAGON FLANGE FACING LOCKNUT M6	2
77	38800905000000	FRONT LEFT TURN LIGHT	1
78	GB/T5789-1986	HEXAGON FLANGE FACING BOLT M10X1.25X60	2
79	38870302002000	DOOR SEAL STRIP	1
80	38870303100000	EXTERIOR HANDLE ,RIGHT DOOR	1
81	GB/T5789-1986	HEXAGON FLANGE FACING BOLT M6×12	4
82	38870304103000	RIGHT DOOR LOCK	1

83	GB 2673-86	HEXAGON LOBULAR SOCKET COUNTERSUNK HEAD CAP SCREW M8X20	6
84	GB/T5789-1986	HEXAGON FLANGE FACING BOLT M6×20	2
85	GB/T6187.1-2000	ALL-METAL HEXAGON FLANGE FACING LOCKNUT M6	2
86	38870304107000	LIMITING STOPPER	2
87	GB/T823-1988	CROSS RECESSED SCREW M6X16	4
88	38870201806000	HINGE ASSEMBLY1	2
89	GB/T70.2-2000	HEXAGON SOCKET HEAD CAP HEAD SCREW M8X25	16
91	38870304000000	LEFT DOOR ASSEMBLY	1
	38870303000000	RIGHT DOOR ASSEMBLY	1
92	38870303200000	EXTERIOR HANDLE ,LEFT DOOR	1
93	38870304203000	LEFT DOOR LOCK	1
94	38870304108000	DOOR LOCK ASSEMBLY	2
95	GB/T 68-2000	SLOTTED COUNTERSUNK HEAD CAP SCREW M8X30	4
96	38870304104000	CLIP ASSEMBLY	2
97	38870201807000	HINGE ASSEMBLY2	2
	38876001000000	TOP	1
	GB/T12618-1990	SELF-PLUGING RIVET Φ3.2×9	45
	38836001001000	SNAPPER	45
	38836001001100	SNAPPER COVER	45
	38836001001200	SNAPPER LOOP	45
	38836001001300	SNAPPER BASE	45

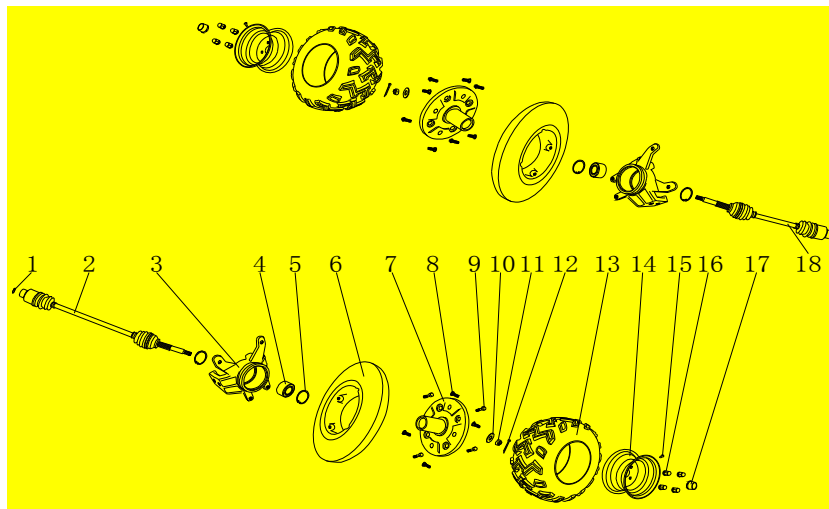
F-4
DRIVE ASSY.



F-4 DRIVE ASSY.

REF NO.	(PART NO.)	DESCRIPTION	REGD NO.
1	38851500004020	FRONT AXLE ASSY	1
2	GB/T879.1-2000	ELASTIC PIN ϕ 8X40	3
3	38851500006010	FRONT OUTPUT SHAFT ASSY L=802MM	1
4	GB/T 893.1-1986	CIRCLIP FOR HOLE 55	2
5	GB/T276-1994	BEARING 6006-ZRS	2
6	38851500007100	BASE FOR INTERMEDIATE STRUT CONNECTING SHAFT	1
7	GB/T5789-1986	HEXAGON BOLT M10X1.25X50	2
8	38851500007010	INTERMEDIATE STRUT CONNECTING SHAFT	1
9	38851500006021	MIDDLE OUTPUT AXLE ASSY L=535mm	1
10	38832620002000	STEEL CABLE BAFFLE RING	2
11	38851500006031	REAR OUTPUT AXLE ASSY L=294mm	1
12	38851500005010	REAR AXLE ASSY	1
13	38850201005000	MOUNTING FRAME FOR DIFFERENTIAL LOCK STAYGLUY	2
14	GB/T5789-1986	HEXAGON BOLT M6X12	4
15	GB/T6187.2-2000	ALL-METAL HEXAGON FLANGE FACING LOCKNUT M12 \times 1.25	2
16	GB/T5789-1986	HEXAGON BOLT M12X1.25X115	2
17	GB/T5789-1986	HEXAGON BOLT M8X60	2
18	345000000270	SPRING BASE	2

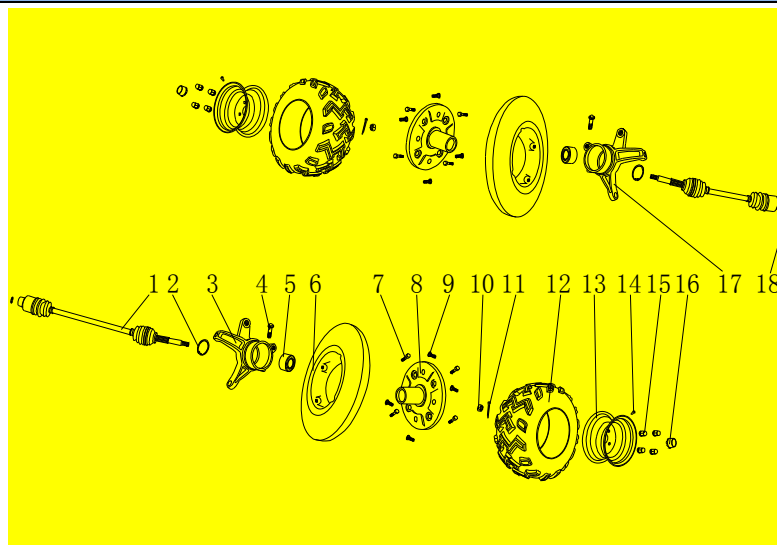
19	345000000240	REVERSE SPRING 1	8
20	38850201030000	HANDLE FOR DIFFERENTIAL LOCK	2
21	GB/T6187.2-2000	ALL-METAL HEXAGON FLANGE FACING LOCKNUT M8	2
22	GB/T5789-1986	HEXAGON BOLT M8X20	2
23	345034000000	BRACKLET OF REVERSE HANDLE	2
24	345000000250	REVERSE SPRING 2	2
25	38851350000000	DIFFERENTIAL LOCK STAYGUY	2
26	345000000260	GUM COVER FOR REVERSE HANDLE	2

F-5
REAR WHEEL ASSY.

F-5 REAR WHEEL ASSY.

REF NO.	(PART NO.)	DESCRIPTION	REGD NO.
1	38852620002000A	STEEL CABLE BAFFLE RING	2
2	38851500003000A	RIGHT CONSTANT VELOCITY UNIVERSAL JOINT	1
3	38820502101000	REAR ELEVATION ANGLE	2
4	GB/T276-1994	BEARING DAC356240	2
5	GB/T 893.1-1986	CIRCLIP FOR HOLE 62	4
6	38831201001000	BRAKE DISC	2
7	38810400002000	HUB	2
8	38810400003000	HUB BOLT M10×1.25×35	8
9	GB/T 5786-2000	HEXAGON BOLT M10X1.25X35	8
10	35812011004000	WASHERΦ18.5×Φ35×4	2
11	38832110003000	SLOTTED NUT M18X1.5	2
12	GB/T91-2000	COTTER PIN 3X40	2
13	38810401003000	REAR TIRE 27*11-14(EEC EPA)	2
	357105010020-2	REAR TIRE (ROAD TIRE24*11-14)	2
14	357105010010-1	REAR RIM	2
15	38830401004000	VALVE	2
	GB12836.1-1999	TUBELESS VALVE Z 2 -01-2	2
16	35810000011000	ACORN NUT M10X1.25	8
17	35710401003000	HUB CENTER COVER	2
18	38851500002000A	REAR LEFT CONSTANT VELOCITY UNIVERSAL JOINT	1

F-6

FRONT WHEEL ASSY.

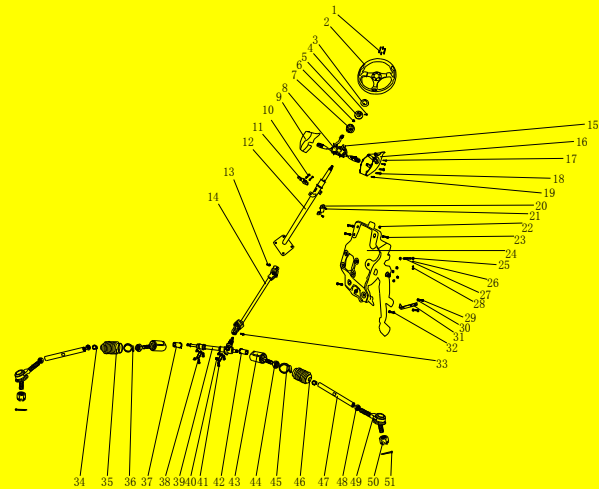


F-6 FRONT WHEEL ASSY.

REF NO.	(PART NO.)	DESCRIPTION	REGD NO.
1	38851500001000	FRONT CONSTANT VELOCITY UNIVERSAL JOINT	2
2	GB/T 893.1-1986	CIRCLIP FOR HOLE 62	2
3	38820404004000	FRONT RIGHT ELEVATION ANGLE	1
4	GB/T5789-1986	HEXAGON FLANGE FACING BOLT M10X1.25X38	2
5	GB/T276-1994	BEARING DAC356240	2
6	38831201001000	BRAKE DISC	2
7	GB/T 5786-2000	HEXAGON BOLT M10X1.25X25	8
8	38810400002000	HUB	2
9	38810400003000	HUB BOLT M10X1.25X35	8
10	GB/T 6178-1986	HEXAGON SLOTTED NUT M18X1.5	2
11	GB/T91-2000	SPLIT PINS 3X40	2
12	38810401002000	FRONT TIRE 27*8-14(EEC EPA)	2
	357104010020-2	FRONT TIRE (ROAD TIRE)	2
13	357104010010-1	FRONT RIM	2
14	38830401004000	VALVE	2
	GB12836.1-1999	TUBELESS VALVE Z 2 -01-2	2
15	35810000011000	ACORN NUT M10X1.25	8
16	35710401003000	HUB CENTER COVER	2
17	38820404003000	LEFT ELEVATION ANGLE	1
18	38852620002000	STEEL CABLE BAFFLE RING (φ1.8)	2

F-7

STEERING SHAFT ASSY.

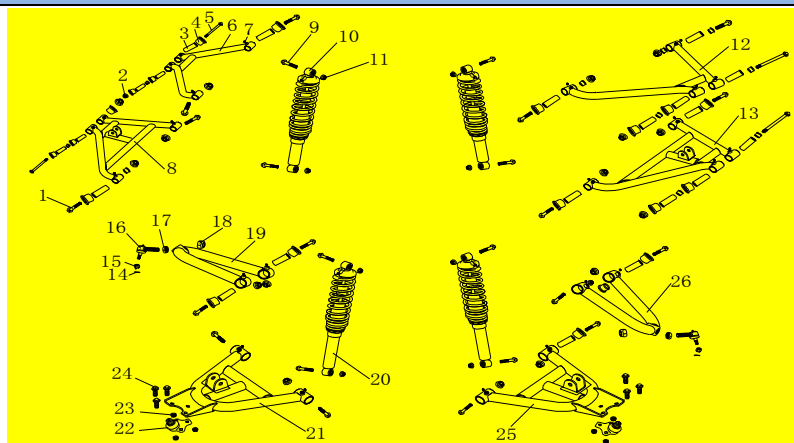


STEERING SHAFT ASSY.

REF NO.	(PART NO.)	DESCRIPTION	REGD NO.
1	GB/T70.1-2000	INNER HEXAGON CYLINDRICAL HEAD BOLT M5X16	6
2	38830601000200	STEERING WHEEL (R/B)	1
	38830601000300	STEERING WHEEL (B)	1
3	38812001010000	LOUDSPEAKER TRANSFER SWITCH BOARD	1
4	GB/T823-1988	CROSS RECESSED PAN HEAD SCREW M5X10	1
5	38812001020000	LOUDSPEAKER TRANSFER SWITCH COVER	1
6	GB/T6187.2-2000	ALL-METAL HEXAGON FLANGE FACING LOCKNUT M12X1.5	1
7	38812001030000	STEERING WHEEL FITTING SEATS	1
8	38830906000000	SWITCHGROUP	1
9	38801500010000	STEERING COVER UPPER	1

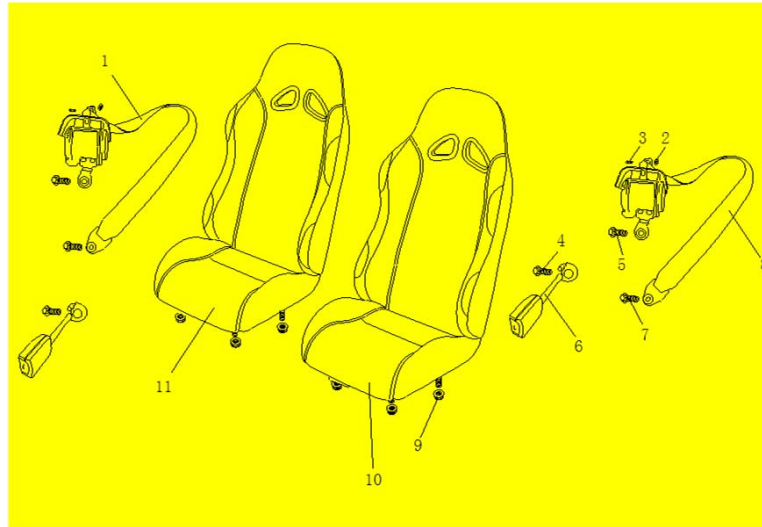
10	GB/T5789-1986	HEXAGON FLANGE FACING BOLT M6X35	2
11	38870917000000	IGNITION SWITCH	1
12	38812001001000	STEERING RACK ASSEMBLY	1
13	GB/T5789-1986	HEXAGON FLANGE FACING BOLT M8X25	1
14	38850602000000	STEERING UNIVERSAL JOINT CROSS	1
15	GB/T823-1988	CROSS RECESSED PAN HEAD SCREW M4X12	2
16	38801500020000	STEERING COVER LOWER	1
17	GB/T845-2000	SELF-TAPPING SCREW ST3.5X16	2
18	GB/T845-2000	SELF-TAPPING SCREW ST4.2X20	2
19	GB/T823-1988	CROSS RECESSED PAN HEAD BOLT M6X12	1
20	38830201002900	STEERING RACK PRESS-BOARD	1
21	GB/T5789-1986	HEXAGON FLANGE FACING BOLT M6X25	2
22	GB/T6187.1-2000	ALL-METAL HEXAGON FLANGE FACING LOCKNUT M8	10
23	GB/T5789-1986	HEXAGON FLANGE FACING BOLT M8X20(STRENGTHENING SCREW BOLT)	3
24	38832401000000	BRAKE PEDAL,THROTTLE PEDAL AND CLUTCH PEDAL COMP.	1
25	GB/T6170-2000	HEXAGON NUT M8	2
26	GB/T91-2000	COTTER PIN 2X20	1
27	GB/T70.1-2000	INNER HEXAGON CYLINDRICAL HEAD BOLT M8X50	1
28	38832500005000	PEDAL CONNECTING PIN	1
29	GB/T5789-1986	HEXAGON FLANGE FACING BOLT M6X16	2
30	GB/T6187.1-2000	ALL-METAL HEXAGON FLANGE FACING LOCKNUT M6	2
31	38831602001000	CLUTCH PEDAL POSITION LIMITER	1
32	GB/T5789-1986	HEXAGON FLANGE FACING BOLT M8X25(STRENGTHENING SCREW BOLT)	2
33	GB/T5789-1986	HEXAGON FLANGE FACING BOLT M8X25	1
34	38830602003000	CLAMP2	2
35	38800202101100	DUSTPROOF COVER L	1
36	38830602002000	CLAMP1	1
37	38850202200001	STEERING LIMITING COVER RIGHT	1
38	38830201025300	STEERING GEAR BOTTOM BOARD	2
39	38830202100001	STEERING GEAR ASSEMBLY (INTEGRAL)	1
40	GB/T6187.1-2000	ALL-METAL HEXAGON FLANGE FACING LOCKNUT M8	4
41	GB/T5789-1986	HEXAGON FLANGE FACING BOLT M8X20	4
42	38850202300001	STEERING LIMITING COVER LEFT	1
43	38800202103000	BALL JOINT STEERING	2
44	GB/T6170-2000	HEXAGON NUT M10X1.25	2
45	38830602001000	CLIP	1
46	38800202102100	DUSTPROOF COVER R	1
47	38830603200100	PULL ROD	2
48	GB/T6170-2000	HEXAGON NUT M12X1.25	2

49	38800202300000	TIE ROD BALL	2
50	GB/T6178-1986	HEXAGON THIN NUT M12X1.25	2
51	GB/T91-2000	COTTER PIN 3.2X35	2
52		STEERING WHEEL DISU	1
53	38830601000210	HORN SWITCH	1
54	38830601000220	STEERING WHEEL DECORATIVE COVER	1

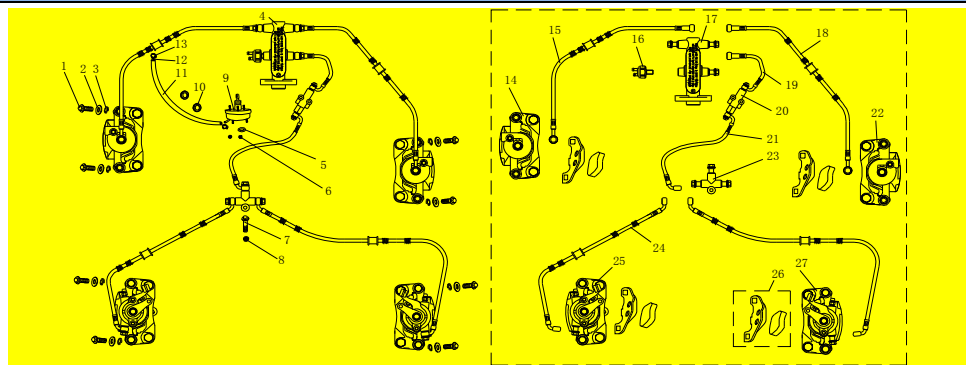
F-8
SUSPENSION ARM ASSY.

F-8 SUSPENSION ARM ASSY.

REF NO.	(PART NO.)	DESCRIPTION	REGD NO.
1	GB/T5789-1986	HEXAGON FLANGE FACING BOLT M12X1.25X75	16
2	GB/T6187.2-2000	ALL-METAL HEXAGON FLANGE FACING NUT M12X1.25	4
3	35711100002000	COCKET CENTRING BUSH	24
4	35711100001000	COCKET CENTRING NYLON BUSH	48
5	GB/T5789-1986	HEXAGON FLANGE FACING BOLT M12X1.25X155	4
6	38851102160000	UPPER ROCKER ARM RIGHT REAR	1
7	38831102202000	LUBRICATOR FITTING M6(STAINLESS STEEL)	24
8	38851102260000	LOWER ROCKER ARM RIGHT REAR	1
9	GB/T5789-1986	HEXAGON FLANGE FACING BOLT M10X1.25X50	8
10	GB/T6187.2-2000	ALL-METAL HEXAGON FLANGE FACING LOCKNUT M10X1.25	8
11	38853030000000	REAR SHOCK ABSORBER ASSEMBLY	2
12	38851102150000	UPPER ROCKER ARM RIGHT REAR	1
13	38851102250000	LOWER ROCKER ARM LEFT REAR	1
14	GB/T91-2000	COTTER PIN 3.2X35	2
15	GB/T6178-1986	HEXAGON SLOTTED NUT M12X1.25	2
16	38831101101100	FRONT UPPER ROCKER ARM BALL	2
17	38831101101300	NUT M16	2
18	38831101101200	SELF-LOCKING NUT M16	2
19	38851101101000	FRONT RIGHT UPPER SWING ARM	1
20	38853020000000	FRONT SHOCK ABSORBER ASSEMBLY	2
21	38851101105000	FRONT UPPER ROCKER RIGHT ARM	1
22	35812110200000	BALL JOINT COMP.	2
23	GB/T6187.1-2000	ALL-METAL HEXAGON FLANGE FACING LOCKNUT M8	6

24	GB/T5789-1986	HEXAGON FLANGE FACING BOLT M8X20	6
25	38851101104000	FRONT UPPER ROCKER LEFT ARM	1
26	38851101102000	FRONT LEFT UPPER SWING ARM	1

F-9
SEATS,SAFETY BELT SYSTEM

F-9 SEATS, SAFETY BELT SYSTEM

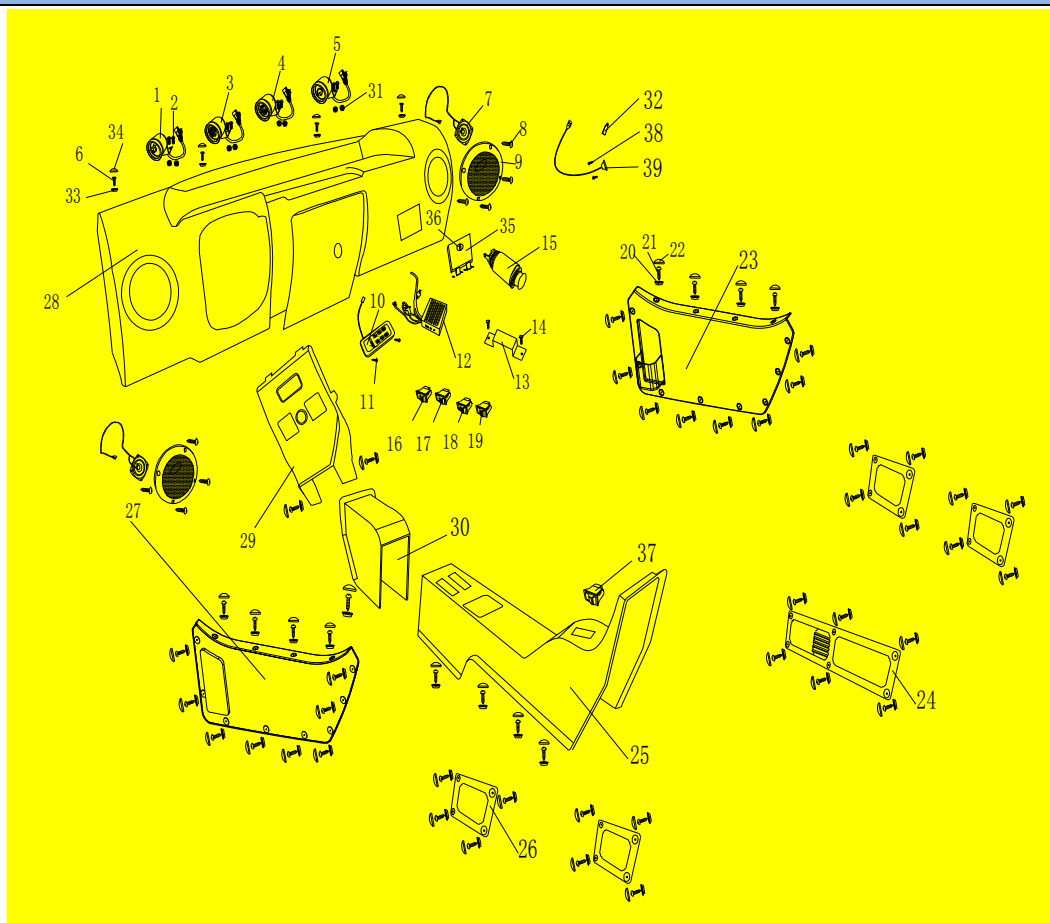
REF NO.	(PART NO.)	DESCRIPTION	REGD NO.
1	38833100001000	SAFETY BELT R	1
	38833100001000D	SAFETY BELT R (DOT)	1
2	GB/T96.1-2002	BIG WASHER6	2
3	GB/T5789-1986	HEXAGON FLANGE FACING BOLT M6X25	2
4	GB/T5789-1986	HEXAGON FLANGE FACING BOLT M10X1.25X30	2
5	GB/T5789-1986	HEXAGON FLANGE FACING BOLT M10X1.25X25	2
6	38833110000000	BUCKLE SAFETY BELT	2
	38833110000000D	BUCKLE SAFETY BELT (DOT)	2
7	38833120000000	SAFETY BELT FIXING BOLT	2
8	38833100002000	SAFETY BELT L	1
	38833100002000D	SAFETY BELT L (DOT)	1
9	GB/T6187.1-2000	ALL-METAL HEXAGON FLANGE FACING LOCKNUT M8	8
10	38850701000011	SEAT COMP L (EMULATIONAL LEATHER)	1
11	38850702000011	SEAT COMP R (EMULATIONAL LEATHER)	1

F-10
BRAKING SYSTEM

F-10 BRAKING SYSTEM

REF NO.	(PART NO.)	DESCRIPTION	REGD NO.
1	GB/T5789-1986	HEXAGON FLANGE FACING BOLT M12X1.25X30(STRENGTHENING SCREW BOLT)	8
2	GB/T97.1-2002	FLAT WASHER12	8
3	GB/T93-1987	STANDARD TYPE SPRING WASHER12	8
4	38851201000001	BRAKE ASSEMBLY	1
	38861201000001	BRAKE ASSEMBLY(R)	1
5	GB/T3452.1—1992	O-RING 30X2.65	1
6	GB/T6187.1-2000	ALL-METAL HEXAGON FLANGE FACING LOCKNUT M8	2
7	GB/T5789-1986	HEXAGON FLANGE FACING BOLT M8×35	1
8	GB/T6187.1-2000	ALL-METAL HEXAGON FLANGE FACING LOCKNUT M8	1
9	38833541001000	VACUUM BOOSTER PUMP	1
10	38833541003000	THREADING CUSHION	2
11	38853541002000	CONNECTING PIPE (2750mm)	1
12	38833541004000	SUBPRESSURE CONTROL VALVE	1
13	346120000050-1	WATER PIPE CLAMP9-16	2
14	38831201020000	FRONT LEFT BRAKE CYLINDER	1
15	38851201030000	FRONT LEFT BRAKE HOSE (L=730mm)	1
16	34610603100000	PRESSURE SWITCH	1
17	38831201010000	MASTER BRAKE CYLINDER	1
18	38851201050000	FRONT RIGHT BRAKE CYLINDER (L=1200mm)	1
19	38851201061000	REAR MAIN BRAKE HOSE A (L=300mm)	1
20	38831201100000	PROPORTIONAL VALVE	1
21	38851201062000	REAR MAIN BRAKE HOSE B (L=2250mm)	1
22	38831201040000	FRONT RIGHT BRAKE CYLINDER	1
23	38831201090000	Brake HOSE T-JUNCTION	1
24	38851201080000	REAR RRAKE HOSE (L=730mm)	2

25	38831201110000	REAR LEFT BRAKE CYLINDER	1
26	38831201002000	BRAKE PAD	4套
27	38831201070000	REAR RIGHT BRAKE CYLINDER	1

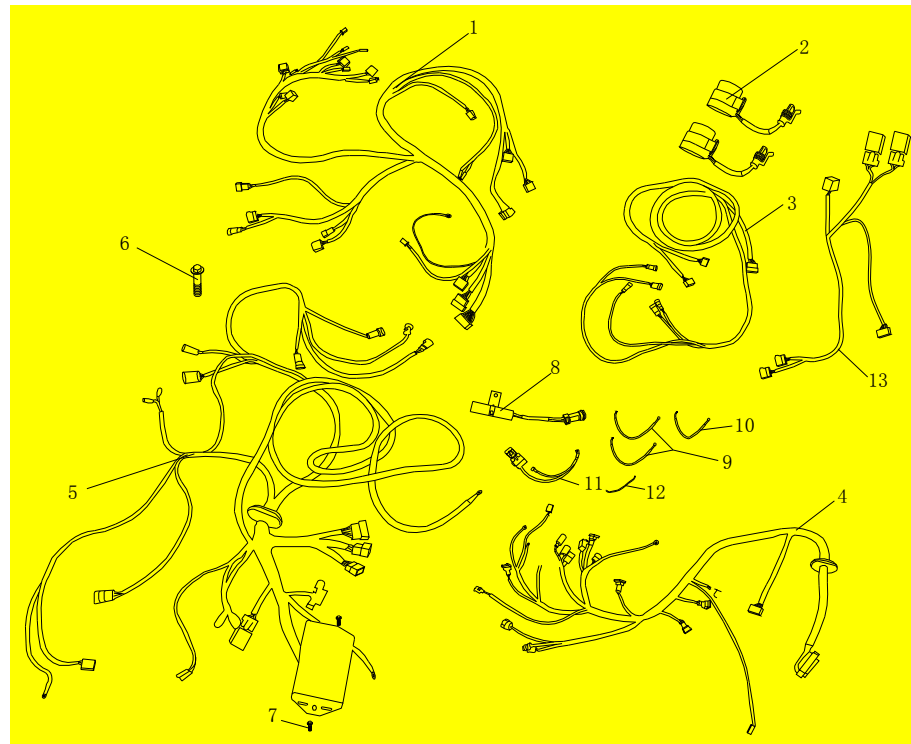
F-11
INTERIOR TRIMMING,



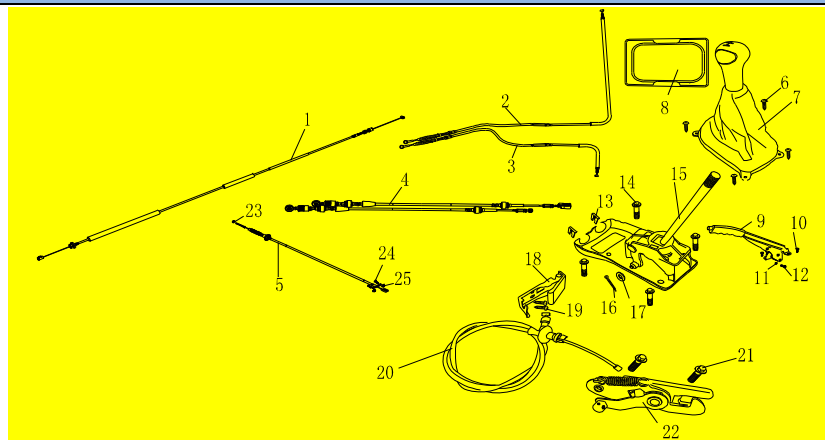
F-11 INTERIOR TRIMMING, ELECTRICAL

REF NO.	(PART NO.)	DESCRIPTION	REGD NO.
1	38810912000000	SINGAL INDICATOR	1
2	GB/T5789-1986	HEXAGON FLANGE FACING BOLT M6X16	8
3	38850913000000	SPEEDOMETER	1
4	38810914000000	OIL LEVEL & WATER TEMPERATURE INDICATOR	1
5	38810915000000	ENGINE SPEED RECORDER	1
6	GB/T819.1-2000	CROSS RECESSED COUNTERSUNK HEAD SCREW M6X20	4
7	38802100260000	LOUDSPEEKER 4inch	2
8	GB/T845-2000	SELF-TAPPING SCREW ST3.5×16	8
9	38802100290000	SURFACE BASKET	2
10	38900300022000	MP3 BOARD CONTROLLER	1
11	GB/T845-2000	SELF-TAPPING SCREW ST3.5X16	2

12	38900300021000	MP3 PLAYER	1
13	38900300021100	MP3 PLAYER BRACKET	1
14	GB/T823-1988	CROSS RECESSED FLAT HEAD SCREW M4X10	2
15	34610915000000	CIGAR LIGHTER	1
16	38810906006000	HEADLIGHT SWITCH	1
17	34610906001000	EMERGENCY ALARM SWITCH	1
18	38810906002000	FLAMEOUT SWITCH	1
19	38810906005000	LITTLE LAMP SWITCH	1
20	38801500012400	FASTENER BASE	64
21	GB/T845-2000	SELF-TAPPING SCREW ST3.9X16	64
22	38801500012310	DECORATIVE BUCKLE COVER	64
23	38871500019000	RIGHT SIDE DECORATION BOARD	1
24	38851500016000	REAR BOX DECORATION BOARD (4WD)	1
25	38851500017020	CENTER HAND REST REAR PART	1
26	38801500021000	REAR BOX DECORATION LITTLE BOARD	4
27	38871500018000	LEFT SIDE DECORATION BOARD	1
28	38801500012100	INSTRUMENTATION CONSOLE	1
29	38851500020000	CENTER HAND REST UPPER	1
30	38851500017010	CENTER HAND REST FOREPART	1
31	GB/T6187.1-2000	ALL-METAL HEXAGON FLANGE FACING LOCKNUT M6	8
32	38900300025000	U FLASH DISK	1
33	38831500004000	INSTRUMENTATION CONSOLE DECORATIVE BUCKLE(DOWN)	4
34	38801500012310	DECORATIVE BUCKLE COVER	4
35	38831500013000	ELECTRICAL COMPONENT	1
36	38831500013100	ELECTRICAL COVET LOCK	1
37	38850918002010	SHIFTER FOR 2WD/4WD JK938A-107	1
38	GB/T845-1985	CROSS RECESSED PAN HEAD TAPPING SCREW ST3.5 × 16	2
39	38811010011200	CABLE	1

F-12
WIRE HARNESS

F-12 WIRE HARNESS

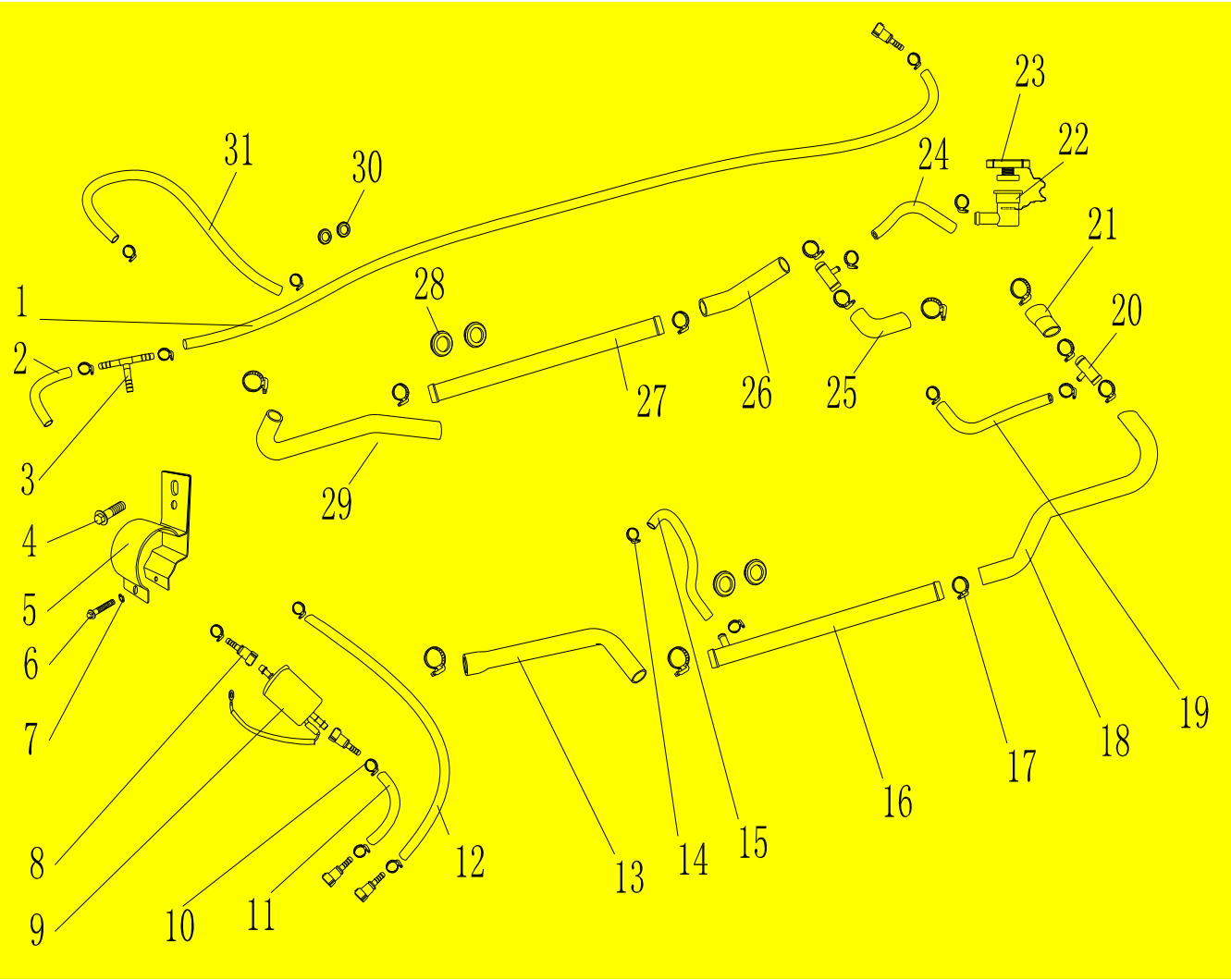
REF NO.	(PART NO.)	DESCRIPTION	REGD NO.
1	38851010010200	INSTRUMENT WIRING HARNESS	1
2	35810901800000	THREE-WIRE FLASHER	2
3	38851010010301	REAR TAIL WIRE HARNESS	1
4	38851010010400	NOSE NACELLE WIRE HARNESS	1
5	38851010010100	ENGINE WIRE HARNESS	1
6	GB/T5789-1986	HEXAGON FLANGE FACING BOLT M8X10	1
7	GB/T5789-1986	HEXAGON FLANGE FACING BOLT M6X16	3
8	38811010010600	RESISTANCE	1
9	38811010010700	POWER CATHODE 1	1
10	38851010010800	POWER CATHODE 2	2
11	38851010010900	POWER ANODE	1
12	38811010011000	LOUDSPEAKER CONNECTING LINE	1



F-13 CABLE , OPERATING MECHANISM

REF NO.	(PART NO.)	DESCRIPTION	REGD NO.
1	38851320000000	THROTTLE CABLE	1
2	38851300004011	PARKING BRAKE CABLE- RIGHT SECTION	1
3	38851300004021	PARKING BRAKE CABLE- LEFT SECTION	1
4	38853130600000	CHOOSE OR SHIFT GEAR CABLE ASSEMBLE	1
5	38831310000000	CLUTCH CABLE	1
6	GB/T845-2000	SELF-TAPPING BOLT ST4.2X16	4
7	38853131000000	HANDLE BALL(M12)	1
8	38833130900000	HANDLE BALL COVER	1
9	346126010000-1	PARKING BRAKE HANDLE	1
10	GB/T5789-1986	HEXAGON FLANGE FACING BOLT M8X14	2
11	GB/T6187.1-2000	ALL-METAL HEXAGON FLANGE FACING LOCKNUT M8	1
12	GB/T 27-1988	STEP BOLT M8× ϕ 10.5×17×27	1
13	38833130601500	CLIP	2
14	GB/T5789-1986	HEXAGON FLANGE FACING BOLT M6X25	4
15	38831340000000	GEARS OPERATOR	1
16	GB/T91-2000	COTTER PIN 2X20	1
17	GB/T 97.3-2000	FLAT WASHER 8 FOR PIN ROLL	1
18	38831107540000	FRONT COVER HANDLE	1
19	GB/T845-2000	SELF-TAPPING SCREW ST4.8X16	2
20	38851107530000	FRONT COVER CABLE	1
21	GB/T5789-1986	HEXAGON FLANGE FACING BOLT M6X20	2
22	38831107510000	FRONT COVER LOCK	1
23	GB/T6170-2000	MODEL 1 HEXAGON NUT M6	1

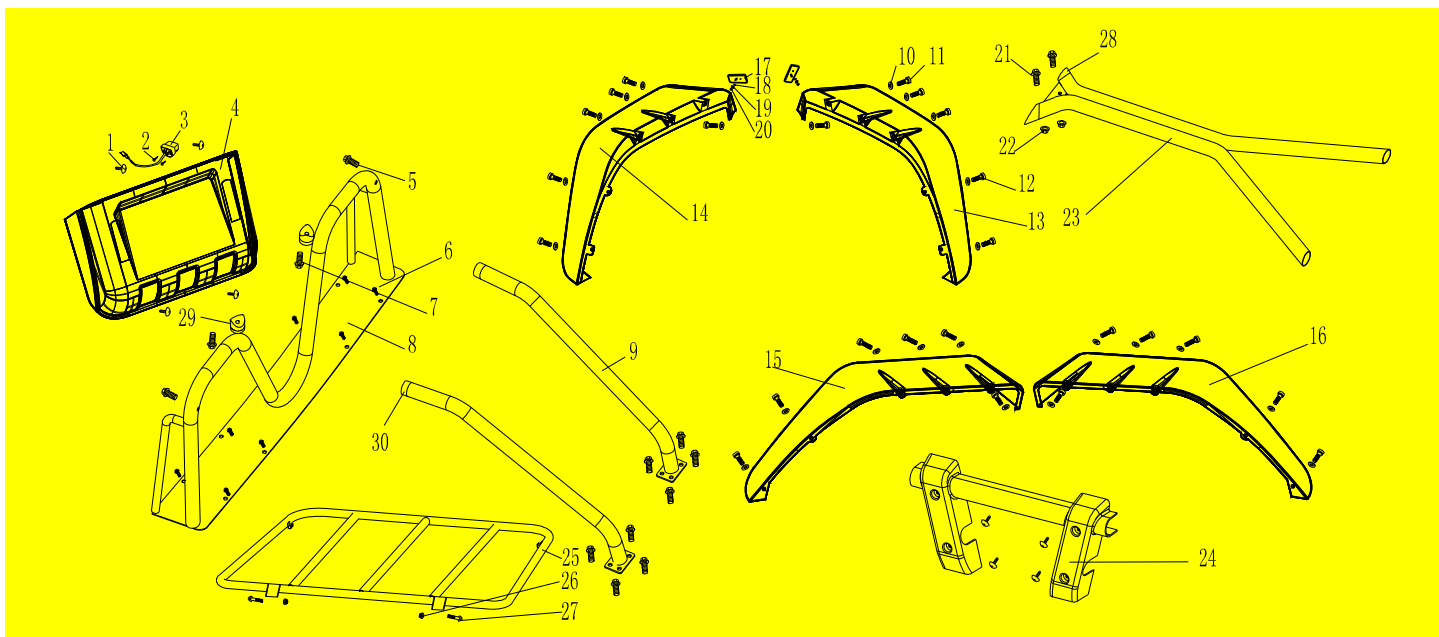
24	GB/T5789-1986	HEXAGON FLANGE FACING BOLT M6X25	2
25	GB/T6187.1-2000	ALL-METAL HEXAGON FLANGE FACING LOCKNUT M6	2



F-14 WATER PIPE & THREE-WAY

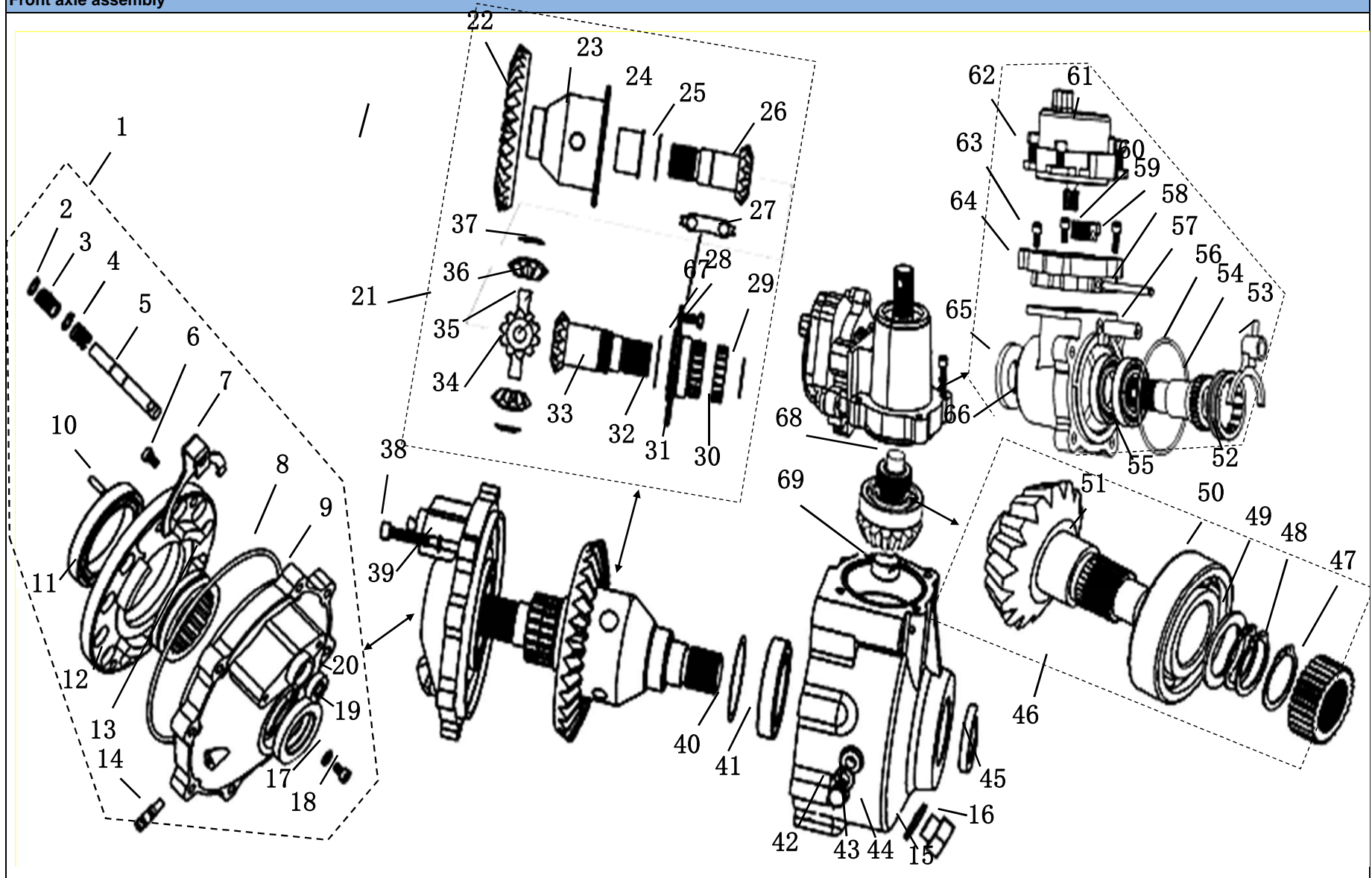
REF NO.	(PART NO.)	DESCRIPTION	REGD NO.
1	38830000008000	OIL PIPE 2 (PRESSURE-PROOF)(2700mm)	1
2	38850801002000	OIL PIPE 3 (PRESSURE-PROOF)(200mm)	1
3	38830000004000	OIL PIPE THREE-WAY	1
4	GB/T5789-1986	HEXAGON FLANGE FACING BOLT M8X14	1
5	38831020008000	FILTER ELEMENT BRACKET	1
6	GB/T5789-1986	HEXAGON FLANGE FACING BOLT M6X45	1

7	GB/T93-1987	STANDARD SPRING WASHER6	1
8	38830000010000	FUEL TRACK THRUSTING	5
9	38831020007000	FILTER ELEMENT	1
10	346120000050-1	WATER PIPE COLLAR CLAMP9-16	8
11	38850801001000	OIL PIPE 1 (PRESSURE-PROOF)(150mm)	1
12	38850000007000	OIL PIPE 1 (PRESSURE-PROOF)(440mm)	1
13	38852001003000	ENGINE INLET TUBE3 (4WD)	1
14	34612000004000	WATER PIPE COLLAR CLAMP18-32	6
15	38852002006000	RESERVOIR CONNECTION TUBE2	1
16	38852001002000	ENGINE INLET TUBE2 (4WD)	1
17	38812000005000	WATER PIPE COLLAR CLAMP1 (21-44)	12
18	38852001001000	ENGINE INLET TUBE1 (4WD)	1
19	38832000002100	SHORT CIRCLE WATER PIPE	1
20	38832000005000	SHORT CIRCLE THREE-WAY PIPE	1
21	38832000003000	ENGINE INLET TUBE2	1
22	38852002007000	AIRVENTSEAT FOR ENGINE OUTLET	1
23	38852002008000	CAP OF AIRVENTSEAT FOR ENGINE OUTLET	1
24	38852002005000	CONNECTING PIPE OF AIRVENTSEAT FOR ENGINE OUTLET	1
25	38852002001000	ENGINE OUTLET TUBE1 (4WD)	1
26	38852002002000	ENGINE OUTLET TUBE2 (4WD)	1
27	38852002003000	ENGINE OUTLET TUBE3 (4WD)	1
28	38811010010500	CABLE CONDUCTOR THREAD CUSHION	4
29	38852002004000	ENGINE OUTLET TUBE4 (4WD)	1
30	38830000009000	OIL PIPE CONDUCTOR THREAD CUSHION	2
31	38852000003000	RESERVOIR CONNECTION TUBE1(330mm)	1

F-15
EXTERIOR TRIMMING PARTS

F-15 EXTERIOR TRIMMING PARTS

REF NO.	(PART NO.)	DESCRIPTION	REGD NO.
1	GB/T823-1988	CROSS RECESSED SCREW M6X14	8
2	GB/T845-2000	SELF-TAPPING SCREW ST4.2X16	2
3	345209200000E	REAR REGISTRATION PLATE LAMP	1
4	38801500050000	REAR PROTECTIVE COVER	1
5	38802000201000	ROBBER STOPPER	8
6	GB/T5789-1986	HEXAGON FLANGE FACING BOLT M8×25 (MIGHTINESS BOLT)	16
7	GB/T97.1-2002	FLAT WASHER 10	8
8	38871500024000	D-POST	1
	38801500024000	D-POST	1
9	38870201717000	REAR SUPPORT PIPE ASSY	2
10	GB/T 97.3-2000	FLAT WASHER 8 FOR PIN ROLL	24
11	GB/T70.1-2000	HEXAGON SOCKET HEAD CAP HEAD SCREW M8X25	6
12	GB/T70.1-2000	HEXAGON SOCKET HEAD CAP HEAD SCREW M8X20	18
13	38801500090000	REAR LEFT FENDER	1
14	38801500080000	REAR RIGHT FENDER	1
15	38801500060000	FRONT LEFT FENDER	1
16	38801500070000	FRONT RIGHT FENDER	1
17	345041000000E	REAR REVERSE SIDE MIRROR	2

18	GB/T93-1987	STANDARD SPRING WASHER5	2
19	GB/T97.1-2002	WASHER5	2
20	GB/T6170-2000	I HEXAGON NUT M5	2
21	GB/T5789-1986	HEXAGON FLANGE FACING BOLT M6×20	2
22	GB/T6187.1-2000	ALL-METAL HEXAGON FLANGE FACING LOCKNUT M6	2
23	38871500023000	TOP HOLDER	1
	38801500023000	TOP HOLDER	1
24	38921100000900	FRONT BUMPER COVER	1
	38801500022000	FRONT PROTECTIVE COVER	1
	38850201004110	UPPER MOUNTING FRAME OF FRONT PROTECT COVER	2
25	38870201800000	REAR SHELF	1
26	GB/T6187.1-2000	ALL-METAL HEXAGON FLANGE FACING LOCKNUT M8	2
27	GB/T5789-1986	HEXAGON FLANGE FACING BOLT M8×40	2
28	38871500023100	FRONT ADJUSTMENT CONNECTOR	2
29	38871500023200	MIDDLE ADJUSTMENT CONNECTOR	2
30	38870201717100	REAR ADJUSTMENT CONNECTOR	2



F-16 Front axle assembly

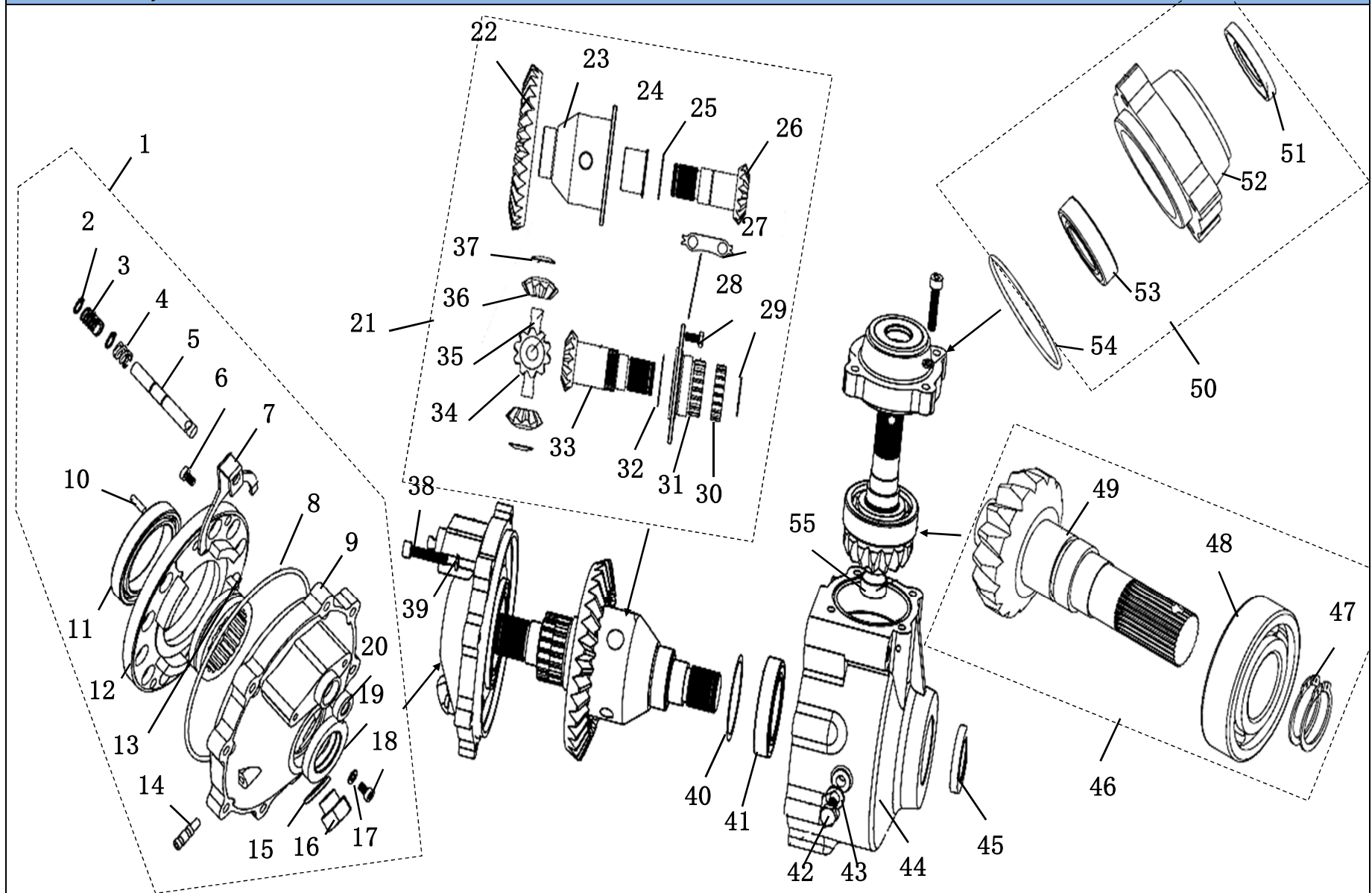
REF NO.	(PART NO.)	DESCRIPTION	REGD NO.
1	XY800-1002G-00	MAIN REDUCER SIDE COVER ASSEMBLY	1
2	GB894.1-86/ ϕ 10	SHAFT WASHER ϕ 10	2
3	UV800-1201-2	SPRING	1
4	UV800-1201-5	SPRING	1

5	ZLQ7-22	LOCKING FORK SHAFT	1
6	GB70-1985/M6-16	HEXAGONAL BOLT M6-16	2
7	UV800-1201-4	LOCKING SHIFT FORK	1
8	GB/T3452.1-92/φ 160*2.65	RUBBER SEAL O-RING φ 160*2.65	1
9	XY800-1002G	MAIN REDUCER CASE COVER	1
10	GB/TB829.1-92/φ 5*20	SLOTTED PIN φ 5*20	1
11	GB/T276-94/61912	BEARING 61912	1
12	UV800-1005A	INNER COVER	1
13	UV800-1202	LIMIT RING	1
14	UV650-10013	AIR EVACUATION VALVE	1
15	UV650-10005	OIL FILLER WASHER	1
16	UV650-10006	FILLING SCREW FOR LUBE OIL	1
17	GB/T848-1985/φ 6-1	FLAT WASHER φ 6-1	1
18	GB70-1985/M6-10	INNER HEXAGON FLAT HEAD BOLT M6X10	1
19	GB13871-92/FB35-55-8F	OIL SEAL FB35-55-8	1
20	GB13871-92/FB10-22-7F	OIL SEAL FB10-22-7	1
21	UV1100-XYBQ-00	DIFFERENTIAL ASSEMBLY	1
22	UV1100-XYBQ	DRIVEN GEAR	1
23	UV800-1207	RIGHT DIFFERENTIAL BODY	1
24	UV800-1214	BUSHING	1
25	UV800-1212	ADJUSTING WASHER	1
26	XY800-2211Z	RIGHT AXLE SHAFT	1
27	UV800-1220	STOPPING WASHER	6
28	GB5786-2000/M8*1-20	FIXING BOLT M8*1-20	12
29	GB894.1-86/φ 35	CIRCLIPS FOR SHAFT φ 35	2
30	UV800-1203	MONOBLOCK GEAR	1
31	UV800-1206	LEFT DIFFERENTIAL BODY	1
32	UV800-1205	ADJUSTING WASHER	1
33	XY800-2204Z	LEFT AXLE SHAFT	1
34	UV800-1208	PLANET GEAR SHAFT 1	1
35	UV800-1209	PLANET GEAR SHAFT 2	1
36	UV800-1210	PLANET GEAR	4
37	UV800-1216	SPHERE WASHER	4
38	GB70-1985/M8X40	INNER HEXAGON FLAT HEAD BOLT M8X40	12
39	GB/T93-1987/φ 8-2.5	STANDARD TYPE SPRING WASHER 8	12
40	UV800-1213	ADJUSTING WASHER	1
41	GB/T276-94/6010	BEARING 6010	1
42	GB/T5783-2000/M10-20	DRAIN PLUG M10-20	1
43	UV650-10015	OIL DRAIN HOLE WASHER	1
44	XY800-1001G	MAIN REDUCER CASE	1
45	GB13871-92/FB35-55-8F	OIL SEAL FB35-55-8	1

46	UV1100-XYZQ-00	DRIVING GEAR ASSEMBLY	1
47	QC1-24	MONOBLOCK GEAR	1
48	GB894.1-86/ ¢ 30	CIRCLIPS FOR SHAFT ¢ 30	3
49	UV800-1219	WASHER	1
50	GB/T276-94/6307	BEARING 6307	1
51	UV1100-XYZQ	DRIVING GEAR	1
52	QC1-25	COUPLING SLEEVE	1
53	UV800-1102-A	SHIFT FORK	1
54	XY800-1006	FRONT DRIVE INPUTSHAFT	1
55	GB/T276-94/6006	BEARING 6006	2
56	GB/T3452.1-92/77.5*2.65	RUBBER SEAL O-RING 77.5*2.65	1
57	UV800-1101-A	SHIFT FORK AXLE	1
58	UV1100-03-XY	RACK SHAFT	1
59	GB70-85/M6-25	INNER HEXAGON FLAT HEAD BOLT M6X25	2
60	UV1100-02-XY	RACK REVERSAL BLOCK	1
61		NEW ELECTRIC CONVERTER	1
62	GB70-85/M8-16	INNER HEXAGON FLAT HEAD BOLT M8X16	3
63	M6-16 GB70-85	INNER HEXAGON FLAT HEAD BOLT M6X16	2
64		MOTOR BASE	1
65	GB9877.2-88/FB28-52-7F	OIL SEAL FB28-52-7	1
66	XY800-1003D	END COVER	1
67	XY800-1003D-00	END COVER ASSEMBLY	1
68	NA2215	OILLESS BEARING 2215	1
69	NA2512	OILLESS BEARING 2512	1

F-17

Rear axle assembly



F-17 Rear axle assembly

REF NO.	(PART NO.)	DESCRIPTION	REGD NO.
1	XY800-1002G-00	MAIN REDUCER SIDE COVER ASSEMBLY	1
2	GB894.1-86/ ϕ 10	SHAFT WASHER ϕ 10	2
3	UV800-1201-2	SPRING	1

4	UV800-1201-5	SPRING	1
5	ZLQ7-22	LOCKING FORK SHAFT	1
6	GB70-1985/M6-16	HEXAGONAL BOLT M6-16	2
7	UV800-1201-4	LOCKING SHIFT FORK	1
8	GB/T3452.1-92/ ϕ 160*2.65	RUBBER SEAL O-RING ϕ 160*2.65	1
9	XY800-1002G	MAIN REDUCER CASE COVER	1
10	GB/TB829.1-92/ ϕ 5*20	SLOTTED PIN ϕ 5*20	1
11	GB/T276-94/61912	BEARING 61912	1
12	UV800-1005A	INNER COVER	1
13	UV800-1202	LIMIT RING	1
14	UV650-10013	AIR EVACUATION VALVE	1
15	UV650-10005	OIL FILLER WASHER	1
16	UV650-10006	FILLING SCREW FOR LUBE OIL	1
17	GB/T848-1985/ ϕ 6-1	FLAT WASHER ϕ 6-1	1
18	GB70-1985/M6-10	INNER HEXAGON FLAT HEAD BOLT M6X10	1
19	GB13871-92/FB35-55-8F	OIL SEAL FB35-55-8	1
20	GB13871-92/FB10-22-7F	OIL SEAL FB10-22-7	1
21	UV1100-XYBQ-00	DIFFERENTIAL ASSEMBLY	1
22	UV1100-XYBH	DRIVEN GEAR	1
23	UV800-1207	RIGHT DIFFERENTIAL BODY	1
24	UV800-1214	BUSHING	1
25	UV800-1212	ADJUSTING WASHER	1
26	XY800-2211Z	RIGHT AXLE SHAFT	1
27	UV800-1220	STOPPING WASHER	6
28	GB5786-2000/M8*1-20	FIXING BOLT M8*1-20	12
29	GB894.1-86/ ϕ 35	CIRCLIPS FOR SHAFT ϕ 35	2
30	UV800-1203	MONOBLOCK GEAR	1
31	UV800-1206	LEFT DIFFERENTIAL BODY	1
32	UV800-1205	ADJUSTING WASHER	1
33	XY800-2204Z	LEFT AXLE SHAFT	1
34	UV800-1208	PLANET GEAR SHAFT 1	1
35	UV800-1209	PLANET GEAR SHAFT 2	1
36	UV800-1210	PLANET GEAR	4
37	UV800-1216	SPHERE WASHER	4
38	GB70-1985/M8X40	INNER HEXAGON FLAT HEAD BOLT M8X40	12
39	GB/T93-1987/ ϕ 8-2.5	STANDARD TYPE SPRING WASHER 8	12
40	UV800-1213	ADJUSTING WASHER	1
41	GB/T276-94/6010	BEARING 6010	1
42	GB/T5783-2000/M10-20	DRAIN PLUG M10-20	1
43	UV650-10015	OIL DRAIN HOLE WASHER	1
44	XY800-1001G	MAIN REDUCER CASE	1
45	GB13871-92/FB35-55-8F	OIL SEAL FB35-55-8	1

46	UV1100-XYZQ-00	DRIVING GEAR ASSEMBLY	1
47	GB894.1-86/ Φ 35	CIRCLIPS FOR SHAFT Φ 35	2
48	GB/T276-94/6307	BEARING 6307	1
49	UV1100-XYZQ	DRIVING GEAR	1
50	XY800-1021G-00	END COVER ASSEMBLY	1
51	GB13871-92/FB25-52-7F	OIL SEAL FB25-52-7	1
52	XY800-1021G	END COVER	1
53	GB/T276-94/6006	BEARING 6006	1
54	GB/T3452.1-92/77.5*2.65	RUBBER SEAL O-RING 77.5*2.65	1
55	NA2512	OILLESS BEARING 2512	1