

# **1100CC ENGINE PARTS CATALOG**

## Foreword

This engine is a front wheel drive EFI engine(with DELPHI system) produced by our company. We launched this catalog for the users to familiar with the construction and parts of the engine.

Since there is a great many parts in the engine, we did not present every part in the catalog.

The product will be improved and modified in the future, the catalog will be different with the future product, we will launch new version, please pay special attention.

We are aiming at improve the capability and quality of our engine, presenting the service to the users, you comments on operating the engine or any improvement suggestions will be highly appreciated.

## CONTENTS

FIG. 1	Cylinder head assembly.....	( 1 )
FIG. 2	Cylinder block and oil filter assembly.....	( 3 )
FIG. 3	Oil pan assembly.....	( 5 )
FIG. 4	Piston, connecting rod, crankshaft and flywheel assembly.....	( 6 )
FIG. 5	Rocker arm, valve, cam shaft assembly.....	( 8 )
FIG. 6	Timing parts of timing belt type.....	( 10 )
FIG. 7	Oil pump assembly.....	( 12 )
FIG. 8	Intake manifold assembly.....	( 13 )
FIG. 9	Water pump assembly.....	( 16 )
FIG. 10	Exhaust manifold assembly.....	( 17 )
FIG. 11	Starter assembly.....	( 18 )

FIG. 12	Generator assembly.....	( 19 )
FIG. 13	Clutch assembly.....	( 20 )
FIG. 14	Transmission assembly.....	( 21 )
FIG. 14-1	Transmission assembly(five gear)- housing and parts.....	( 22 )
FIG. 14-2	Transmission assembly(five gear)-counter shaft assembly.....	( 25 )
FIG. 14-3	Transmission assembly(five gear)- input shaft and reserve shaft assembly.....	( 27 )
FIG. 14-4	Transmission assembly(five gear)- fork and fork shaft.....	( 29 )
FIG. 14-5	Transmission assembly(five gear)- gear shift assembly.....	( 31 )
FIG. 14-6	Transmission assembly(five gear)-differential assembly.....	( 34 )
FIG. 15	Engine electric control unit(ECU).....	( 35 )

Fig. 1

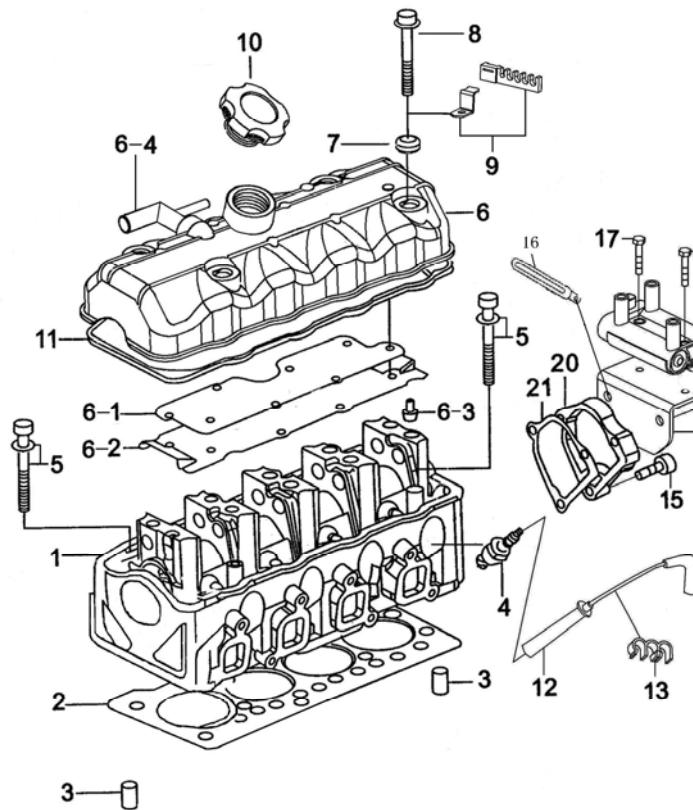


Fig. 1 Cylinder head assembly

No.	Part Number	Name	Quantity	Note
1	LJ465Q-1AE1-1003010	Cyl. head assy.	1	
2	LJ465Q-1003070	Gasket, cyl. head	1	
3	LJ462Q-1-1000028D	Pin, cyl. head	2	
4	LJ462QE1-3707100D	Spark plug	4	
5	LJ462Q-1-1000031D	Bolt, cyl. head M10×1.25×87	10	
6	LJ465Q-1ANE1-1003050 B	Cyl. head cover assy.	1	
6-1	LJ465Q-1ANE1-1003063	Gasket, cyl. head cover	1	
6-2	LJ465Q-1ANE1-1003062	plate	1	
6-3	LJ462Q-1-1000080D	Bolt, cyl. head cover M6×10	8	
6-4	LJ465Q-1ANE1-1003060	hose	1	
7	LJ462Q-1-1000061D	Gasket, bolt	4	
8	LJ462Q-1-1000061D	Bolt, cyl. head cover	4	
9	LJ462QE1-1000076	Clip, cable	1	
10	LJ462Q-1-1003052DA	Cap, oil fill	1	
11	LJ465Q-1ANE1-1003064 DA	Gasket, cyl. Head cover	1	
12	LJ465Q-1ANE1-3707200 A	Ignition cable assy.	1	Include cyl.1、 2、 3、 4、
13	LJ465Q-1ANE1-3707201	Clip, nylon	1	

Fig.1

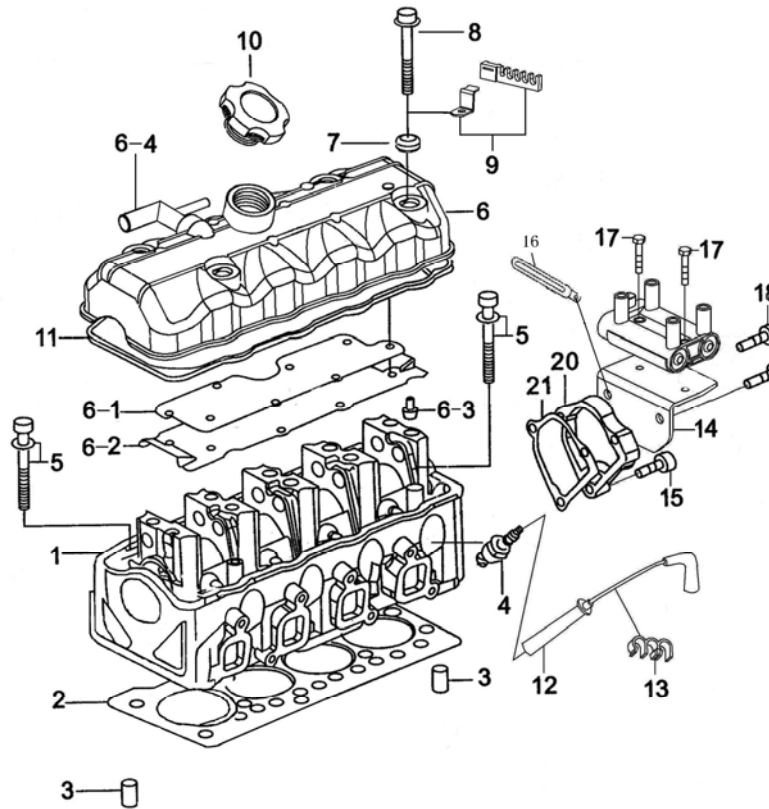


Fig. 1 Cylinder head assembly

No.	Part Number	Name	Quantity	Note
14	LJ465Q-1ANE1-3707015 A	Support, ignition coil	1	
15	Q1840825	Bolt M8×25	1	
16	LJ462Q-1-1000012D	Supporting plate, long	1	
17	Q1840635	Bolt M6×35	2	
18	Q1840835	Bolt M8×35	2	
19	19005270	Ignition coil	1	
20	LJ462QE1-1000038D	Rear cover, cyl. head	1	
21	LJ462Q-1-1000035DA	Gasket, distributor	1	

Fig. 2

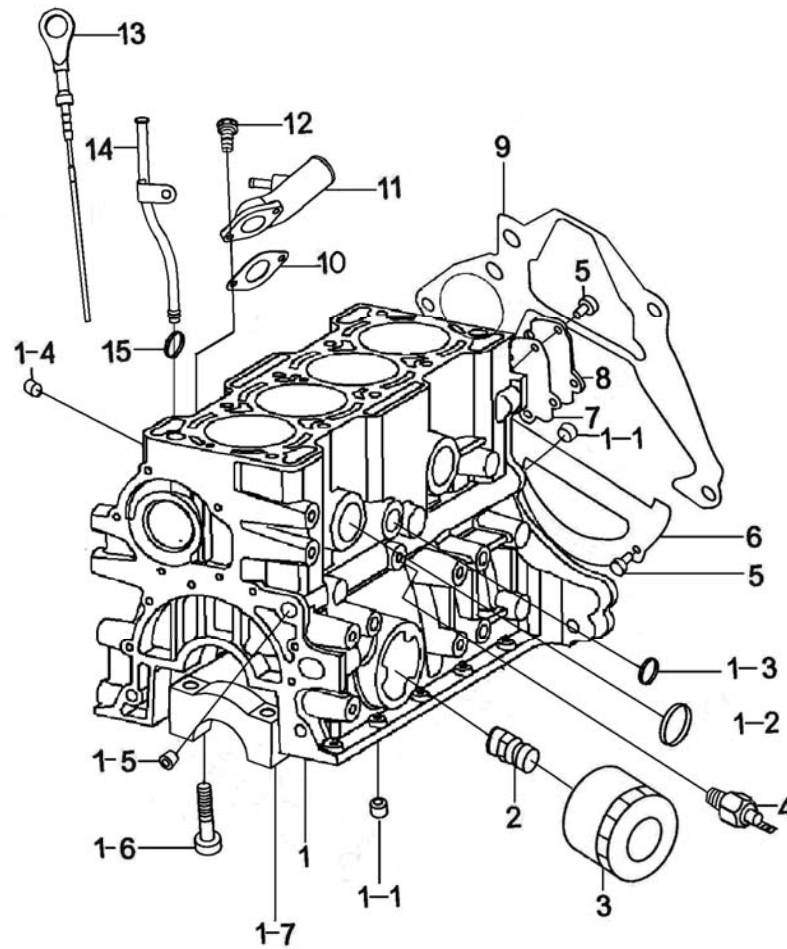


Fig. 2 Cylinder block and oil filter assembly

No.	Part Number	Name	Quantity	Note
1	LJ465Q-1ANE1-1002011	Cyl. block	1	
1-1	LJ462Q-1-1011011D	NPT1/4 Taper plug	2	
1-2	LJ462Q-1-1002012D	Bowl plug	3	
1-3	LJ462Q-1-1003016D	Bowl plug, cyl. head	2	
1-4	LJ462Q-1-1002032D	R1/8Taper plug	1	
1-5	LJ465Q-1ANE1-1011012	NPT1/4 Nozzle, taper plug,	1	
1-6	LJ462Q-1-1002019D	Bolt, crankshaft main bearing	10	
1-7	LJ462Q-1-1002017D	No.1 bearing cover, crankshaft	1	
1-8	LJ462Q-1-1002016D	No.2 bearing cover, crankshaft	1	
1-9	LJ462Q-1-1002015D	No.3 bearing cover, crankshaft	1	
1-10	LJ462Q-1-1002014D	No.4 bearing cover, crankshaft	1	
1-11	LJ462Q-1-1002013D	No.5 bearing cover, crankshaft	1	
2	LJ462Q-1012031DA	Pipe, connecting	1	
3	LJ462Q-1-1012010DB	Oil filter assy.	1	
4	LJ462Q-1-3810010D	Oil pressure alarm	1	
5	LJ462Q-1-1000080D	Bolt, cyl. coverM6×10	2	

Fig. 2

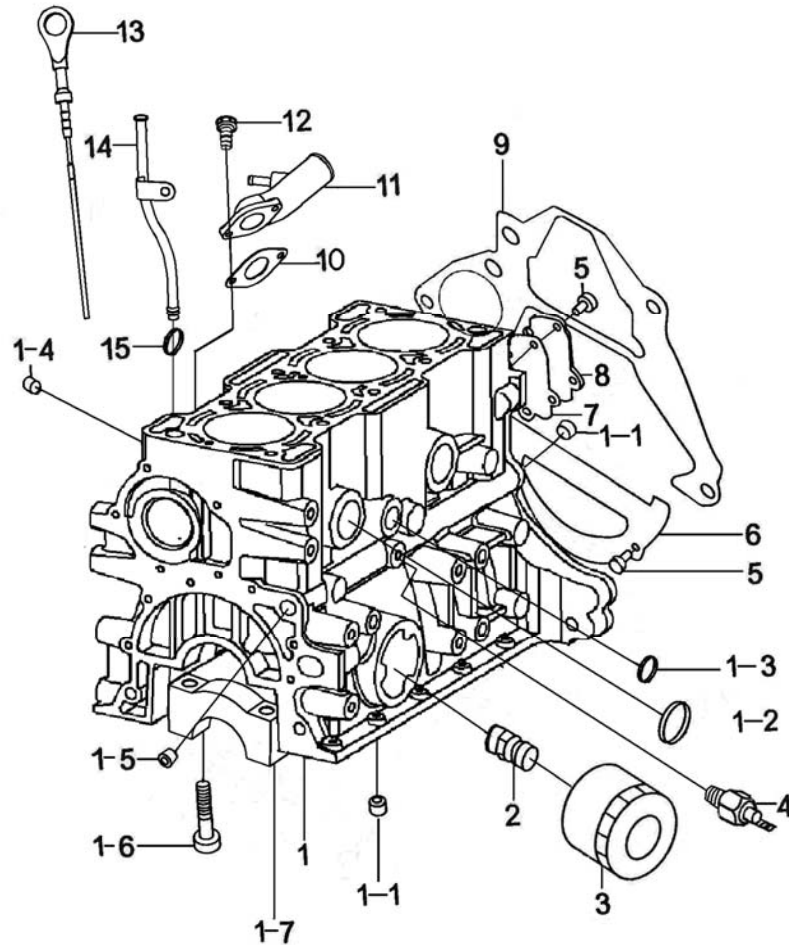


Fig. 2 Cylinder block and oil filter assembly

No.	Part Number	Name	Quantity	Note
6	LJ465Q-1ANE1-100011 1A	Lower plate, clutch	1	
7	LJ462Q-1-1002028D	Gasket, water seal end	1	
8	LJ462Q-1-1002027D	Cover, water seal	1	
9	LJ465Q-1ANE1-100009 7	Upper plate, clutch	1	
10	LJ462Q-1-1000025DB	Gasket, water inlet	1	
11	LJ462Q-1-1303010D	Pipe, water inlet	1	
12	Q1460620	Blot, hexad double gasket M6×20	2	
13	LJ465Q-1ANE1-100205 0B	Oil stick	1	
14	LJ465Q-1ANE1-100206 0B	Guide, oil stick	1	
15	LJ474QE2-1000174	O ring, oil stick	1	
16	Q2140610	Cross-head screw	4	



Fig. 3

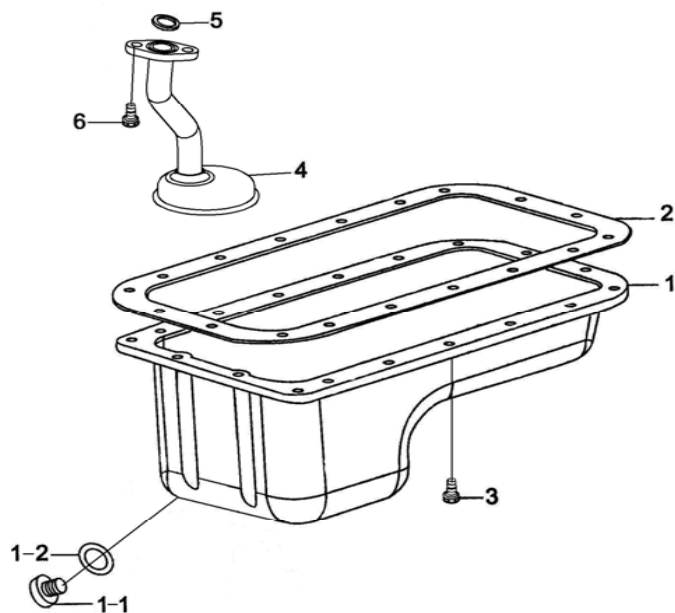


Fig. 3 Oil pan assembly

No.	Part Number	Name	Quantity	Note
1	LJ462QN-1009010	Oil pan assembly	1	
1-1	LJ462Q-1-1009018D	Plug, oil drain	1	
1-2	LJ462Q-1-1009017DC	Gasket, oil drain	1	
2	LJ465Q-1ANE1-100006 4	Gasket, oil pan	1	
3	Q1860616	Bolt, hexad flange M6×16	18	
4	LJ465Q-1ANE1-101001 0A	Oil strainer assy.	1	
5	LJ462Q-1-1002031D	O ring, adapter	1	
6	Q1420616	Bolt, hexad gasket M6×16	2	

Fig. 4

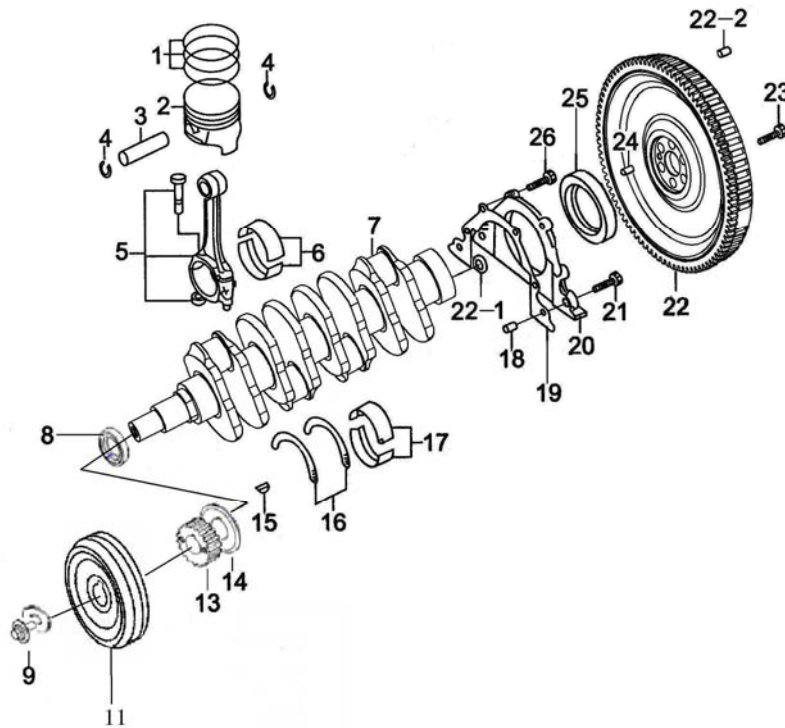


Fig. 4 Piston, connecting rod, crankshaft and flywheel assembly

No.	Part Number	Name	Quantity	Note
1-1	LJ465Q-1004027	No.1 piston ring	4	
1-2	LJ465Q-1004026	No.2 piston ring	4	
1-3	LJ465Q-1004023	Oil ring	4	
2	LJ465Q-1A-1004028	piston	4	
3	LJ465Q-1004021	Pin ,piston	4	
4	LJ462Q-1-1004022D	Clip ring, piston pin	8	
5	LJ465Q-1A-1004011	Connecting rod assy.	4	
6	LJ462Q-1-1004014D	Bearing, connecting rod	8	
7	LJ465Q-1ANE1-1005022	Crank shaft	1	
8	LJ462Q-1-1000124D	Seal, cam shaft, front	1	
9	LJ462Q-1-3901014D	Bolt, cam shaft	1	
11	LJ465QE5-1000049	Drive pulley	1	
13	LJ465Q-1000048	Timing pulley, crankshaft	1	
14	LJ465Q-1000024	Plate	1	
15	Q5500519	Key, semicircle	1	
16	LJ462Q-1-1000047DA	Trust plate crankshaft	2	
17	LJ462Q-1-1002021D	Main bearing	10	

Fig. 4

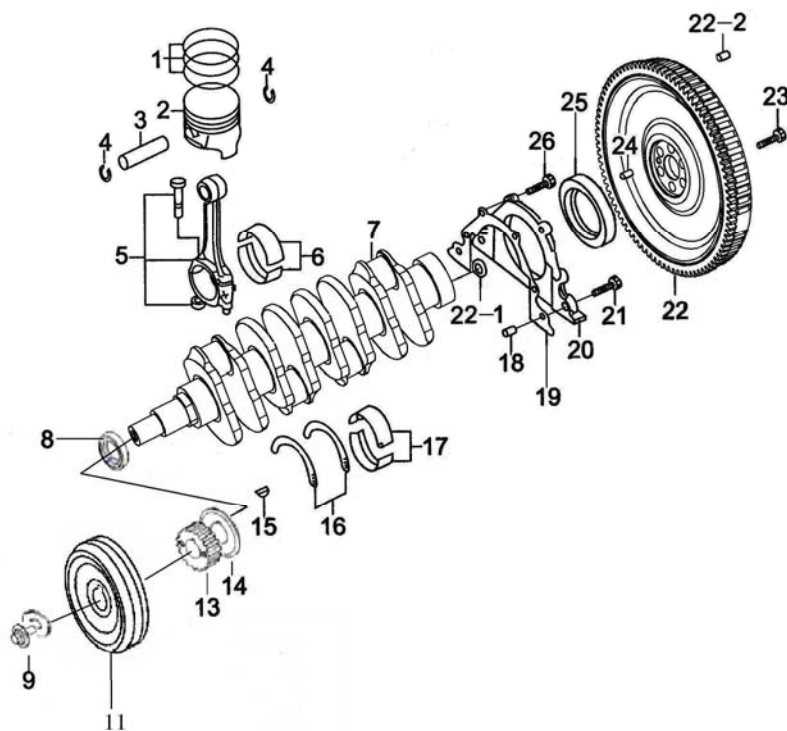


Fig. 4 Piston, connecting rod, crankshaft and flywheel assembly

No.	Part Number	Name	Quantity	Note
18	LJ462Q-1-1000014D	Locking sleeve, crankshaft rear cap	2	
19	LJ462Q-1-1002030DA	Gasket, crankshaft rear end	1	
20	LJ465Q-1ANE1-1002020	Rear cover, crankshaft	1	
21	LJ462Q-1-1000082D	Bolt, crankshaft rear cap M6×25	2	
22	LJ465Q-1ANE1-1005011	Ring, flywheel	1	
22-1	GB/T 276-1994	Bearing E6000-2Z	1	
22-2	LJ465Q-1ANE1-1005015	Lock pin, clutch	3	
23	LJ462-1-1005014D	Bolt, flywheel	6	
24	LJ462-1-1000135D	Lock pin, flywheel	1	
25	LJ462Q-1-1002022D	Seal, crankshaft, rear	1	
26	LJ462Q-1-1000081D	Bolt, crankshaft rear M6×20	4	

Fig. 5

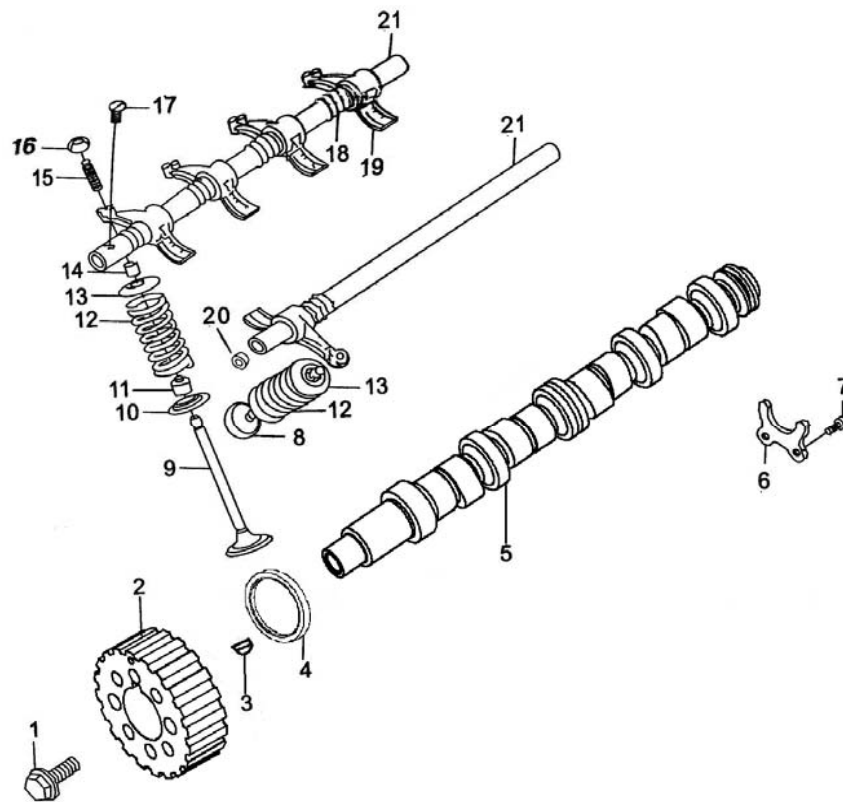


Fig.5 Rocker arm, valve, and camshaft assembly

No.	Part Number	Name	Quantity	Note
1	LJ462Q-1-3901014D	Bolt, camshaft M12×1.25×28	1	
2	LJ465Q-1A-1000101	Timing belt, camshaft	1	
3	Q5500519	Key, semicircle	1	
4	LJ462Q-1-1000124D	Seal, camshaft front	1	
5	LJ465Q-1AE1-1006013	Camshaft	1	
6	LJ462Q-1-1000129D	Trust plate, camshaft	1	
7	Q2540612	Bolt, 6×12	2	
8	LJ462Q-1-1007032DA	Valve, exhaust	4	
9	LJ462Q-1-1007033DA	Valve, inlet	4	
10	LJ462Q-1-1007021D	Seat, valve spring	8	
11	LJ462Q-1-1007022D	Seal, valve	8	
12	LJ462Q-1-1007030D	Spring, valve	8	
13	LJ462Q-1-1007029D	Seat, valve spring	8	
14	LJ462Q-1-1007028DA	Lock, valve, taper	16	
15	LJ462Q-1-1007027D	Adjust bolt, rocker arm	8	
16	LJ462Q-1-1007046D	Adjust nut, valve rocker arm	8	

This exploded view diagram illustrates the assembly of a mechanical component, likely a valve or actuator. The parts are numbered as follows:

- 1:** A hex bolt.
- 2:** A large, circular gear or flange with multiple teeth.
- 3:** A small, triangular wedge or pin.
- 4:** A circular ring or gasket.
- 5:** A long, threaded rod or shaft.
- 6:** A small, L-shaped bracket or pin.
- 7:** A small, L-shaped bracket or pin.
- 8:** A small, circular component, possibly a seal or washer.
- 9:** A long, thin rod or pin.
- 10:** A small, circular component, possibly a seal or washer.
- 11:** A small, circular component, possibly a seal or washer.
- 12:** A coiled spring.
- 13:** A small, circular component, possibly a seal or washer.
- 14:** A small, circular component, possibly a seal or washer.
- 15:** A small, circular component, possibly a seal or washer.
- 16:** A small, circular component, possibly a seal or washer.
- 17:** A small, circular component, possibly a seal or washer.
- 18:** A small, circular component, possibly a seal or washer.
- 19:** A small, circular component, possibly a seal or washer.
- 20:** A small, circular component, possibly a seal or washer.
- 21:** A long, thin rod or pin.

[illegible]

Fig. 6

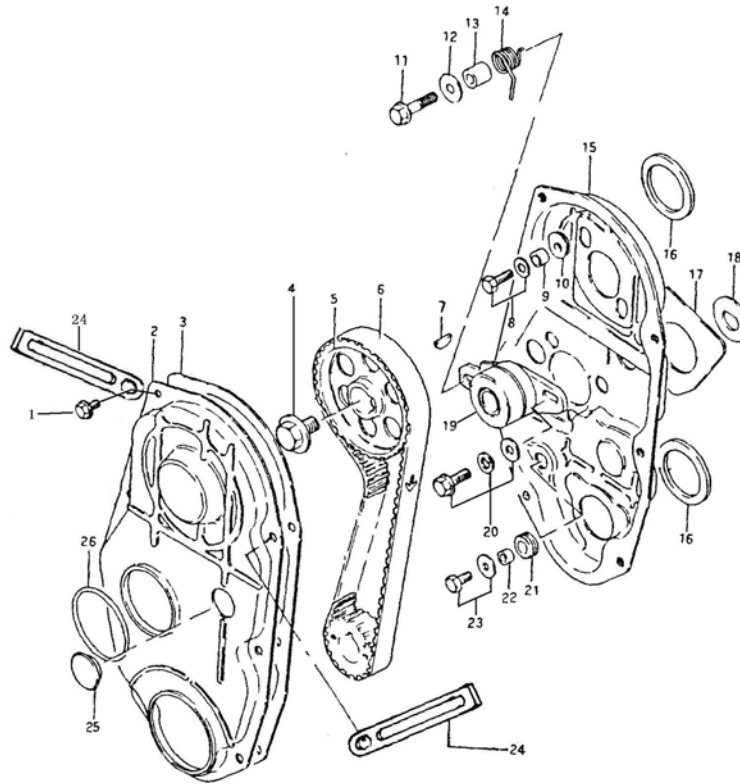


Fig. 6 Timing parts of timing belt type

No.	Part Number	Name	Quantity	Note
1	LJ462Q-1-1000080D	Bolt, cyl. Head cover M6×10	6	
2	LJ465Q-1A-1023011	Cover, front	1	
3	LJ465Q-1A-1000029	Rubber gasket, front and rear cover	1	
4	LJ462Q-1-3901014D	Bolt, camshaft M12×1.25×28	1	
5	LJ465Q-1A-1000101	Timing pulley, camshaft	1	
6	LJ465Q-1A-1000053	Timing belt	1	
7	Q5500519	Key, semicircle	1	
8	LJ462Q-1-3901016D	Bolt, rear cover M6×16	2	
9	LJ462Q-1-1022013D	bush	4	
10	LJ462Q-1-1022012D	Gasket, rear cover	2	
11	LJ462Q-1-1000088D	Bolt, tensioner	1	
12	LJ462Q-1-1000066D	Spring gasket	1	
13	LJ462Q-1-1000067D	Spring bush	1	
14	LJ462Q-1-1000065D	Spring	1	
15	LJ465Q-1A-1022015	Welding rear cover	1	
16	LJ462Q-1-1022020D	Sponge gasket	2	
17	LJ462Q-1-1022019D	Sponge gasket	1	

Fig. 6

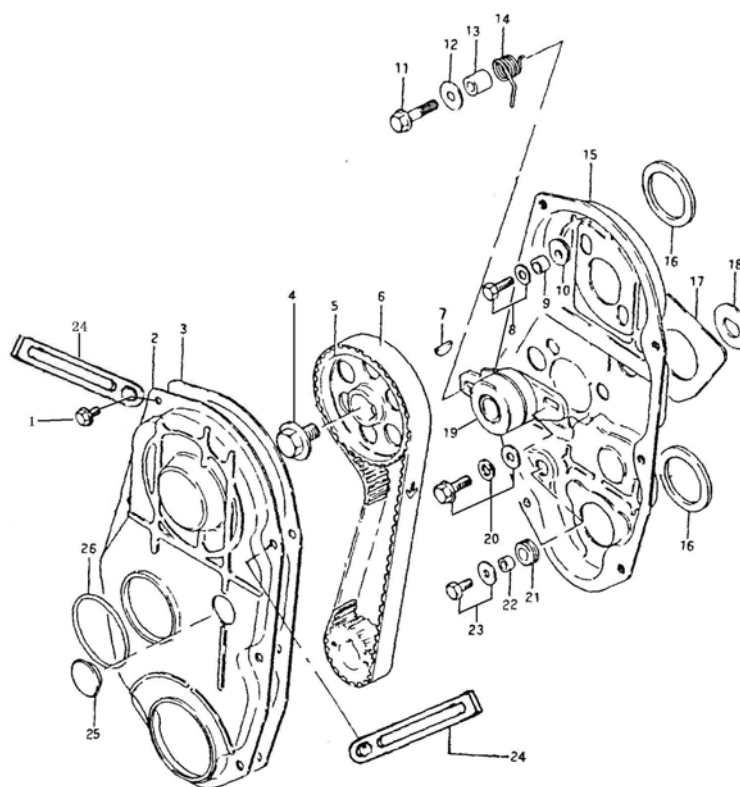


Fig. 6 Timing parts of timing belt type

No.	Part Number	Name	Quantity	Note
18	LJ462Q-1-1022018D	Sponge gasket	1	
19	LJ462Q-1-1021010D	Tensioner assy.	1	
20	LJ462Q-1-1000073D	Bolt, tensioner assy. M8×25	1	
21	LJ462Q-1-1022014D	Rubber gasket, rear cover	2	
22	LJ462Q-1-1022013D	Bush	4	
23	LJ462Q-1-3901013D	Bolt, rear cover M6×20	2	
24	LJ462Q-1-1000012D	Supporting plate, long	2	
25	LJ462Q-1-1023012D	Window cover, front	1	
26	LJ462Q-1-1023013D	Shield, front cover	1	

Fig. 7

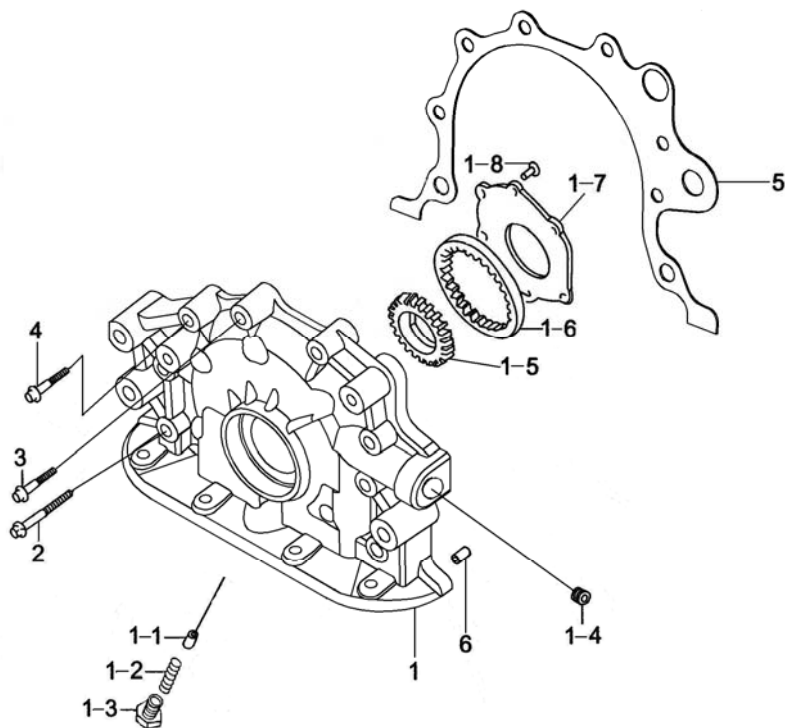


Fig.7 Oil pump assembly 机油泵零部件

No.	Part Number	Name	Quantity	Note
1	462Q-1011101	Pump	1	
1-1	LJ462Q-1011102	Core, limit valve	1	
1-2	462Q-1011103	Spring	1	
1-3	462Q-1011105	Plug	1	
1-4	462Q-1011104	Plug	1	
1-5	462Q-1011107	Outer gear	1	
1-6	462Q-1011108	Gear ring	1	
1-7	462Q-1011106	Cover, pump	1	
1-8	GB819-76	Bolt M6×12	6	
2	LJ462Q-1-1000085D	Bolt, oil pump M6×40	2	
3	LJ462Q-1-1000083D	Bolt, oil pump M6×30	1	
4	LJ462Q-1-1000084D	Bolt, oil pump M6×35	5	
5	LJ462Q-1-1000051DA	Gasket, oil pump	1	
6	LJ462Q-1-1000014D	Lock sleeve, rear cap of oil pump crankshaft	2	



Fig. 8

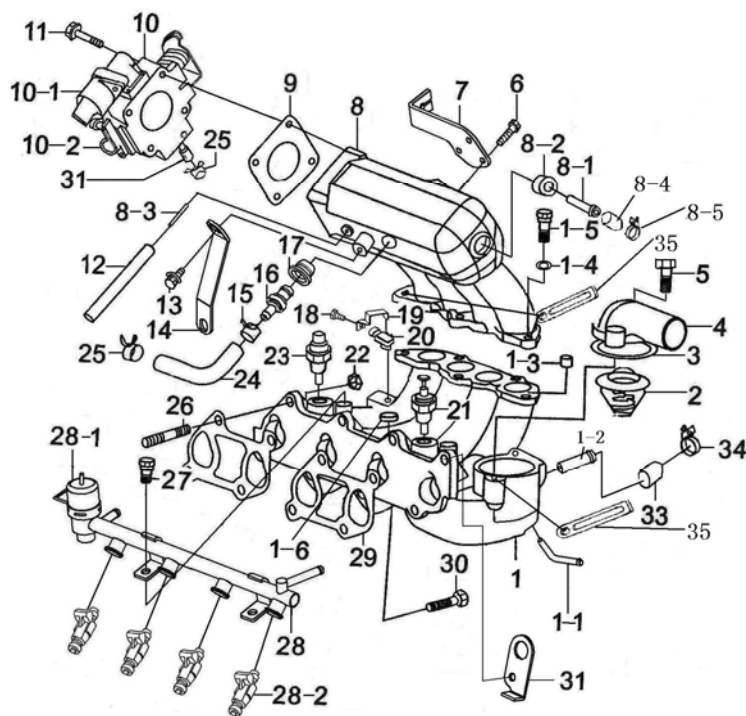


Fig. 8 Intake manifold assembly

No.	Part Number	Name	Quantity	Note
1	LJ465Q-1ANE1-1008023	Lower part, intake	1	
1-1	LJ465Q-1ANE1-1008030	Small pipe	1	
1-2	LJ462Q-1-1008032D	Pipe	1	
1-3	LJ465Q-1ANE1-1008024	Lock sleeve, intake	2	
1-4	GB/T 5783-1986	Bolt M8×25	5	
1-5	GB/T 97.1-1985	Gasket,8	5	
1-6	LJ462Q-1-1003016D	Bowl plug, cyl. head	1	
2	LJ462Q-1-1306010D	Thermostat assy.	1	
3	LJ462Q-1-1008031DA	Gasket, thermostat cap	1	
4	LJ465Q-1008029	Thermostat cap	1	
5	Q1460830	Bolt, hexad double gasket M8×30	2	
6	Q1420616	Bolt, hexad spring M6×16	3	
7	LJ465Q-1ANE1-1107014 A	Support, accelerator cable	1	
8	LJ465Q-1ANE1-1008022	Upper part, inlet	1	
8-1	LJ465Q-1ANE1-1008106	Adapter, vacuum valve	1	
8-2	LJ465Q-1ANE1-1008027	Sleeve	1	
8-3	LJ465Q-1ANE1-1008025	Adapter, adjust valve	1	
8-4	LJ474QE2-9231	Rubber plug	1	

Fig. 8

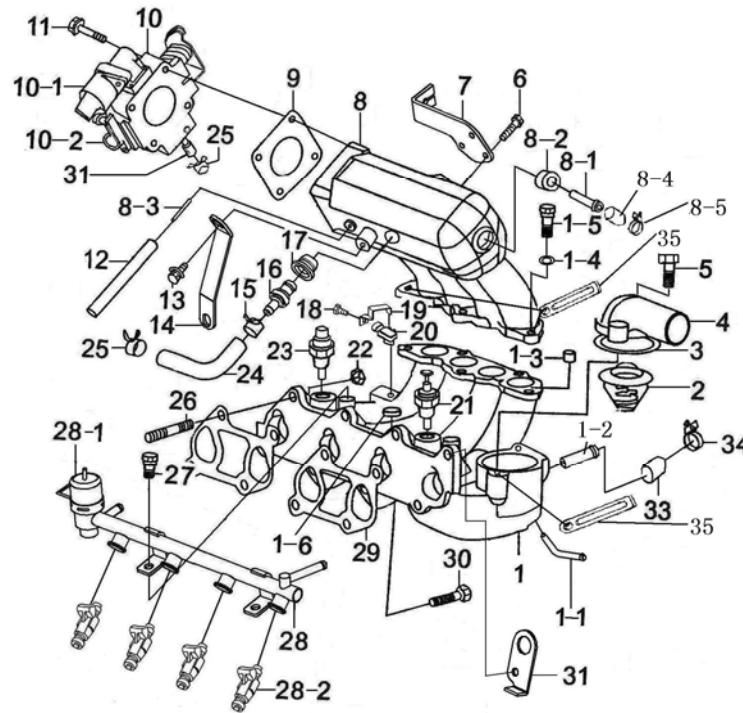
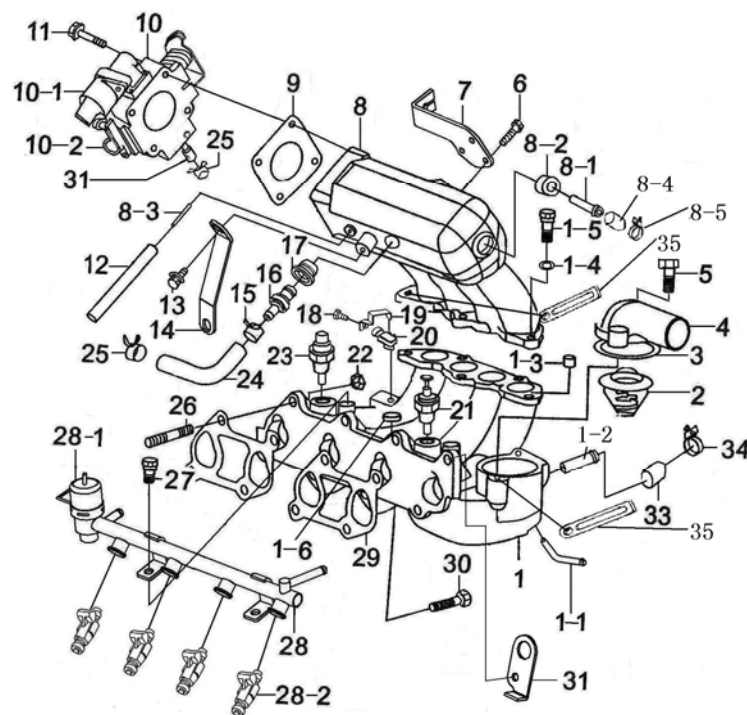


Fig. 8 Intake manifold assembly

No.	Part Number	Name	Quantity	Note
8-5	LJ465Q-1ANE1-1000176	Clip, breathing hose	2	
9	LJ465Q-1ANE1-1000022	Gasket, throttle	1	
10	17203037	Throttle assy.	1	
10-1	17100227	Valve, idle speed	1	
10-2	17106682	Sensor, throttle position	1	
11	Q1460640	Bolt, hexad M6×40	4	
12	LJ462QE1-1000046D	Hose, vacuum	1	
13	GB/T 9074.15-1988	Bolt, hexad M8×16	1	
14	LJ465Q-1ANE1-1008046	Support plate, inlet	1	
15	LJ465Q-1ANE1-1000113	Clip, hose of PCV valve	1	
16	LJ465Q-1ANE1-1008041 A	PCV valve	1	
17	LJ474QE2-1014013	PCV gasket	1	
18	LJ462Q-1-1000080D	Bolt, cyl. head cover M6×10	1	
19	LJ465Q-1ANE1-1008045 A	Support, intake pressure sensor	1	
20	12232201	Intake pressure/ temp. sensor	1	
21	LJ465Q-1ANE1-3808010 C	Water temperature sensor	1	
22	Q32008	Nut M8	5	
23	15404280	Sensor, coolant temp.	1	

Fig. 8



24	LJ465Q-1ANE1-1003068 A	Breathing house of PCV valve	1	
Fig.8 Intake manifold assembly				
No.	Part Number	Name	Quantity	Note
25	LJ462Q-1-1000074DB	Clip	2	
26	LJ462Q-1-1000093D	Bolt, intake	5	
27	Q1840812	Bolt M8×12	2	
28	LJ465Q-1ANE1-3700040 B	Fuel guide assy.	1	
28-1	25324250	Regulator, fuel pressure	1	
28-2	25335146	Injector	4	
29	LJ462QE1-1000063D	Gasket, intake	2	
30	Q1840850	Bolt M8×50	3	
31	LJ474QE2-1000534	Hook, intake manifold	1	
32	LJ491Q-B1001	Rubber plug	1	
33	LJ474QE2-9234	Cover, water return of heater	1	
34	LJ465Q-1ANE1-1000176	Clip	1	
35	LJ462Q-1-1000012D	Supporting plate, long	3	

This diagram illustrates the exploded view of a water pump assembly. The components are numbered as follows:

- 1**: A large, rounded rectangular gasket or seal.
- 2**: A small bolt or screw.
- 3**: A circular pulley with a central hub and four mounting holes.
- 4**: A bolt passing through the pulley into the pump housing.
- 5**: The main pump housing or body.
- 6**: A bolt on the side of the pump housing.
- 7**: A small circular cap or plug.
- 8**: A large, irregularly shaped gasket or seal for the pump housing.
- 9**: A bolt passing through the large gasket into the pump housing.

[illegible]

Fig. 10

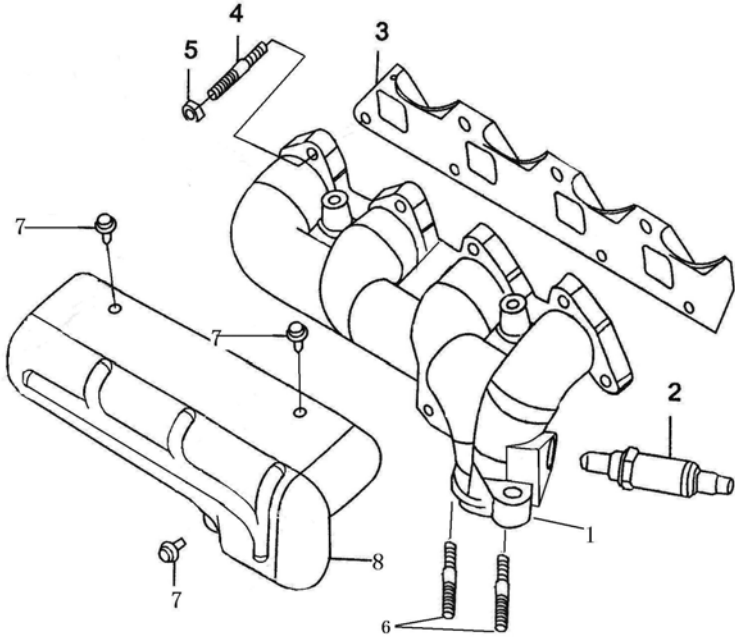


Fig. 10 Exhaust assembly

No.	Part Number	Name	Quantity	Note
1	LJ465Q-1ANE1-100801 1B	Exhaust manifold	1	
2	25327985	Oxygen sensor, heat	1	
3	LJ462QE1-1008054D	Gasket, heat insulation, exhaust	1	
4	LJ462Q-1-1000094D	Bolt, exhaust mounting	8	
5	GB/T 6170-1986	Nut M8	8	
6	LJ465Q-1AE1-3724020	Earthing wiring	1	
7	LJ462Q-1-1000080D	Bolt, cyl. Head cover mounting M6×10	3	
8	LJ465Q-1ANE1-100801 3B	Shield, heat insulation exhaust	1	

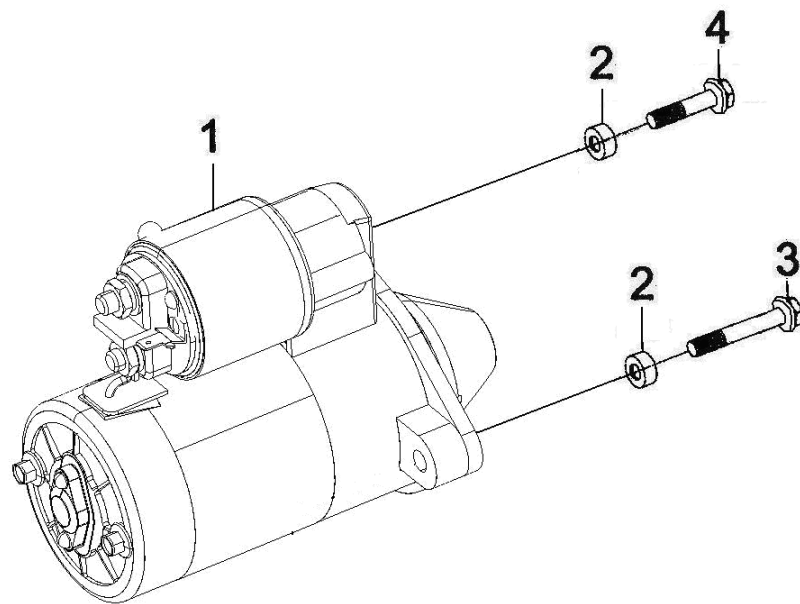


Fig. 11

Fig. 11 Starter assembly

No.	Part Number	Name	Quantity	Note
1	LJ465Q-1ANE1-370801 0	Starter assy.	1	
2	QTB42	Lock pin, hollow $\Phi$ 11 $\times$ 12	2	
3	Q1460855	Bolt, spring gasket, flat gasket assy.M8 $\times$ 55	1	
4	Q1460845	Bolt, spring gasket, flat gasket assy.M8 $\times$ 55	1	

Fig. 12

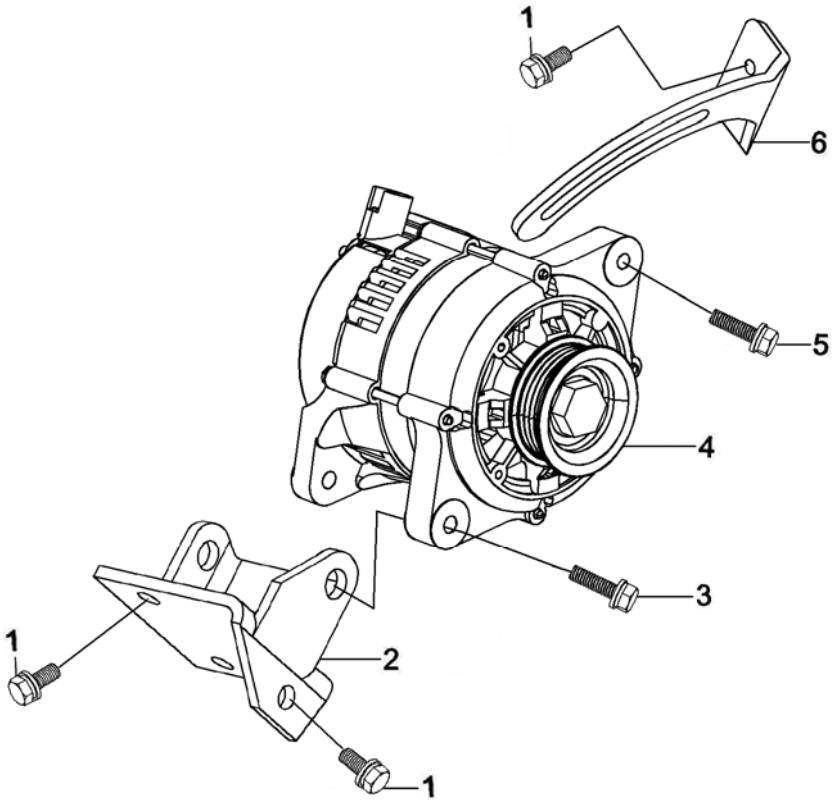


Fig.12 Generator assembly

No.	Part Number	Name	Quantity	Note
1	Q1460820	Bolt, spring gasket, flat gasket assy.M8×20	5	
2	LJ462Q-1-1000102DA	Support, generator	1	
3	LJ462Q-1-1000089D	Bolt, distributorM8×30	2	
4	LJ465Q-1AE6-3701010	Generator assy.	1	
5	LJ462QE1-3901014D	Support with bolt assy, intake manifoldM8×30	1	
6	LJ462Q-1-1000021DB	Support, generator	1	

Fig. 13

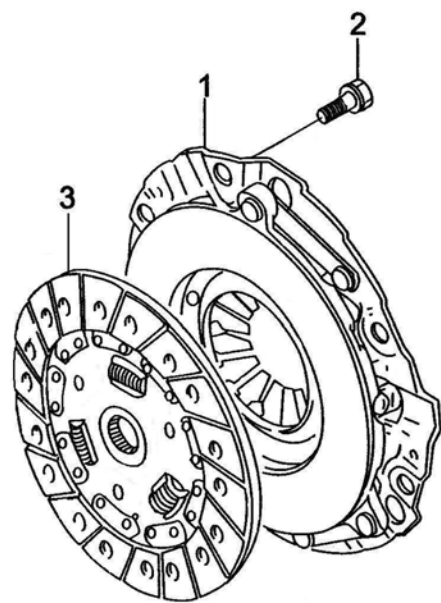


Fig.13 Clutch assembly

No.	Part Number	Name	Quantity	Note
1	LJ465Q-1ANE1-160100 0	Clutch cover assy.	1	
2	GB/T 9074.15-1988	Bolt, M8×16	6	
3	LJ465Q-1ANE1-160200 0	Driven disc assy, clutch	1	



Fig. 14

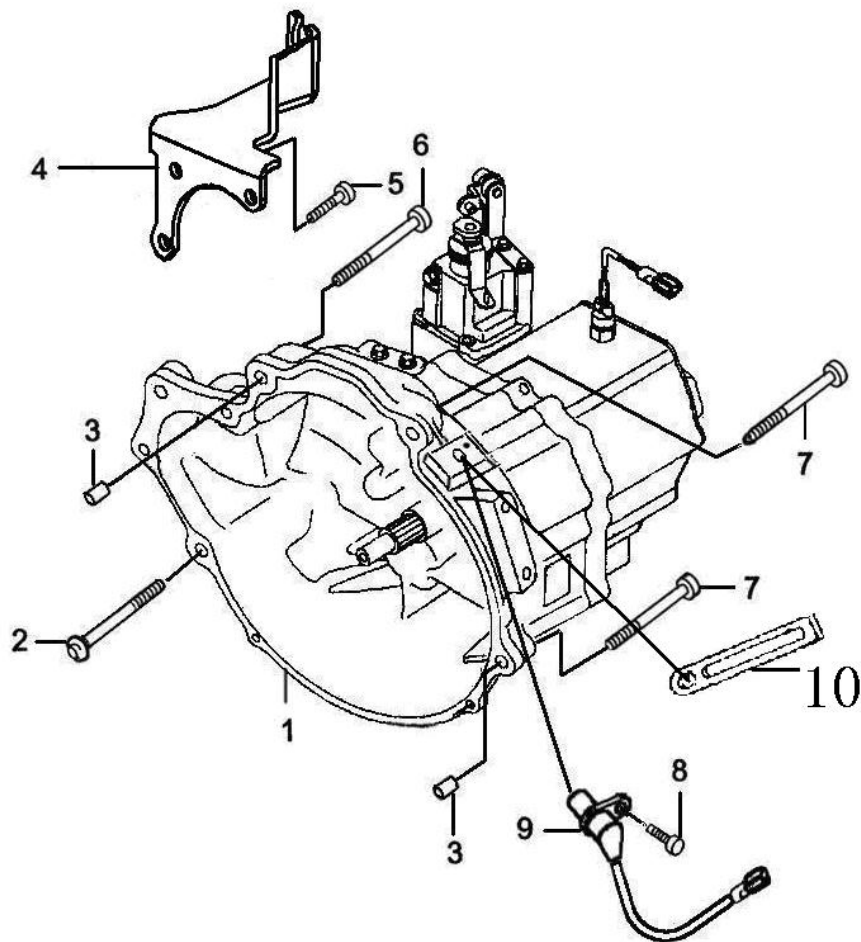


Fig. 14 Transmission assembly

No.	Part Number	Name	Quantity	Note
1	LJ465Q-1ANE1-170000 0	Transmission assy.(five gear)	1	
2	LJQB146C1045	Bolt M10×1.25×45	1	
3	LJ462Q-1-1000028D	Lock pin, cyl. head	2	
4	LJQB146C1060	bolt M10×1.25×60	1	
5	LJQB146C1055	bolt M10×1.25×55	2	
6	Q1420616	bolt M6×16	1	
7	10456569	Sensor, crankshaft position	1	

Fig. 14-1

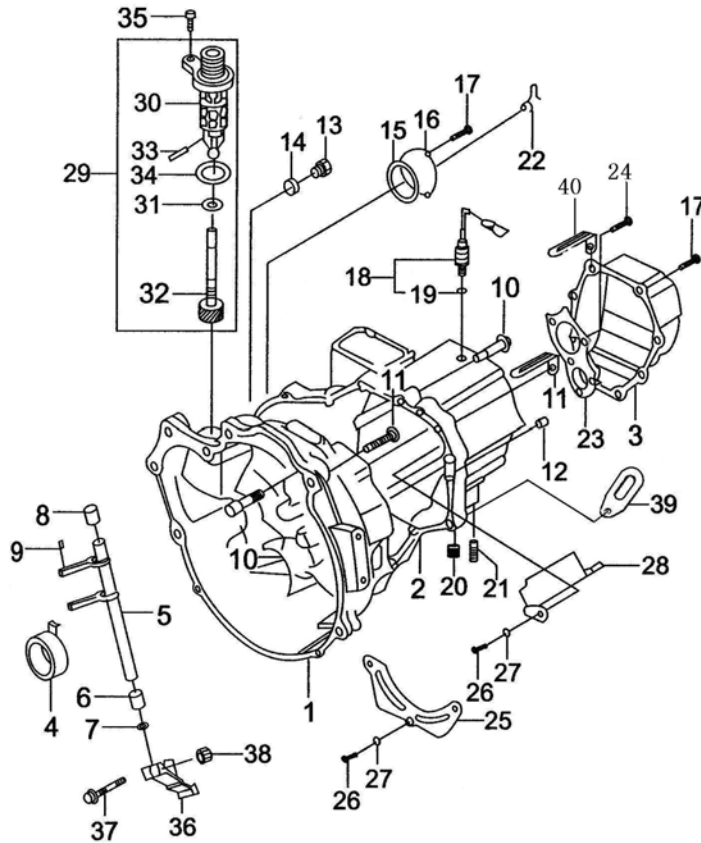


Fig. 14-1 Transmission assembly(five gear) housing and parts

No.	Part Number	Name	Quantity	Note
1	5T07A-1701001	Right side	1	
2	5T07-1701051	Left side	1	
3	5T07A-1701020	Side cover	1	
4	5T07-1702010	Release bearing, clutch	1	
5	5T07-1702020	Fork assy. clutch	1	
6	5T07-1702001	Shaft sleeve, clutch folk (1)	1	
7	5T07-1702030	Seal, clutch folk shaft	1	
8	5T07-1702004	Shaft sleeve, clutch folk (2)	1	
9	GB/T 879-1986	Pin 3×10	1	
10	GB/T 5789-1986	Bolt AM8×40	14	
11	5T07-1701055	Limit	1	
12	5T07-1701001	Lock pin	2	
13	5T07-1701002	Plug, oil filling	1	
14	5T07-1701003	Ring, oil filling plug	1	
15	GB/T 3452.1-1986	O ring 51.5×1.9	1	
16	5T07-1701056	Cover	1	
17	GB/T 5789-1986	Bolt AM6×12	11	
18	5T07-3729010	Reverse switch assy.	1	
19	GB/T 3452.1-1986	O ring11.8×1.8	1	

Fig. 14-1

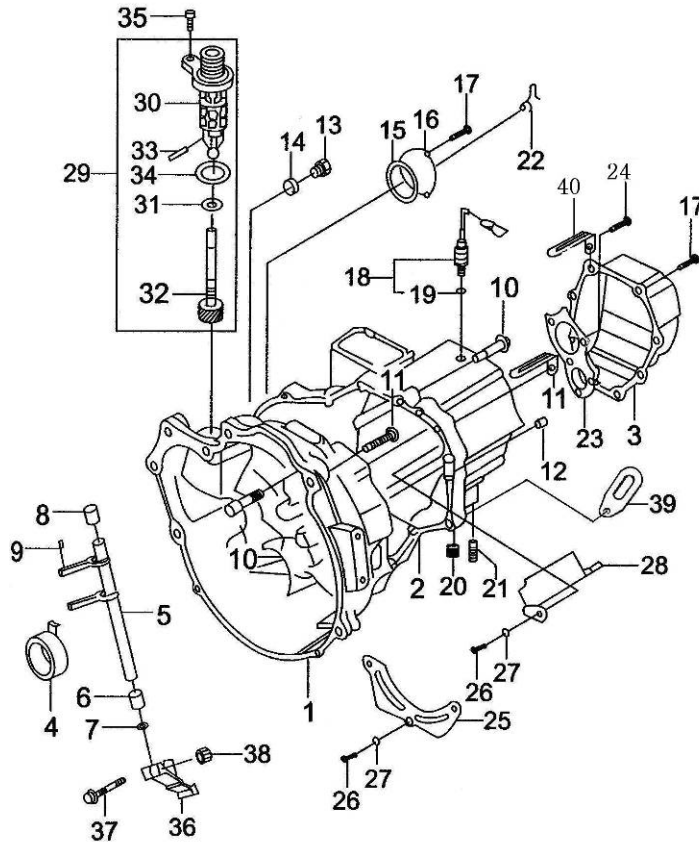


Fig. 14-1 Transmission assembly(five gear) housing and parts

No.	Part Number	Name	Quantity	Note
20	ZBT32001.9-1987	Plug Z1/2	1	
21	5T07-1701058	Bolt	1	
22	5T07-1701059	Still wire limit	1	
23	5T07-1701009	Plate, bearing	1	
24	GB/T 819-1985	Screw M6×16	5	
25	5T07-1701004	Plate, oil block	1	
26	GB/T 5781-1986	Bolt M6×12	4	
27	GB/T 7246-1987	Gasket 6	4	
28	5T07-1701400	Oil slot assy.	1	
29	5T07-1701500	Driver gear assy., speedometer	1	
30	5T07-1701501	Shaft sleeve, speedometer driven gear	1	
31	5T07-1701502	Gasket, speedometer gear	1	
32	5T07-1701503	Driven gear, speedometer	1	
33	GB/T 879-1986	Pin 3×16	1	
34	GB/T 3452.1-1986	O ring16×3.55	1	
35	GB/T 5789-1986	Bolt BM6×16	1	
36	5T07-1702080	Changing parts, clutch	1	
37	GB/T5789-1986	Bolt AM8×35	1	
38	GB/T6177-1986	Nut M8	1	

This diagram illustrates the exploded view of a motorcycle engine assembly, showing the relationship between various components. The parts are numbered as follows:

- 1**: Engine block/cylinder assembly
- 2**: Piston pin
- 3**: Piston crown
- 4**: Piston pin clip
- 5**: Piston pin clip
- 6**: Piston pin clip
- 7**: Piston pin clip
- 8**: Piston pin clip
- 9**: Piston pin clip
- 10**: Piston pin clip
- 11**: Piston pin clip
- 12**: Piston pin clip
- 13**: Piston pin clip
- 14**: Piston pin clip
- 15**: Piston pin clip
- 16**: Piston pin clip
- 17**: Piston pin clip
- 18**: Piston pin clip
- 19**: Piston pin clip
- 20**: Piston pin clip
- 21**: Piston pin clip
- 22**: Piston pin clip
- 23**: Piston pin clip
- 24**: Piston pin clip
- 25**: Piston pin clip
- 26**: Piston pin clip
- 27**: Piston pin clip
- 28**: Piston pin clip
- 29**: Piston pin clip
- 30**: Piston pin clip
- 31**: Piston pin clip
- 32**: Piston pin clip
- 33**: Piston pin clip
- 34**: Piston pin clip
- 35**: Piston pin clip
- 36**: Piston pin clip
- 37**: Piston pin clip
- 38**: Piston pin clip
- 39**: Piston pin clip
- 40**: Piston pin clip

[illegible]

This diagram illustrates the exploded view of a mechanical assembly, showing 22 numbered components arranged in three horizontal rows. The components include various gears, shafts, bearings, and fasteners. The assembly is shown in a disassembled state, with parts separated to show their relative positions and how they fit together. The components are numbered 1 through 22, with some numbers appearing multiple times (e.g., 9, 13, 14, 16, 17, 18, 19, 20, 21, 22).

No.	Part Number	Name	Quantity	Note
1	5T07A-1701201	Countershaft	1	
2	5T07-1701230	1 <sup>st</sup> gear assy., countershaft	1	
3	5T07-1701210	2 <sup>nd</sup> gear assy. countershaft	1	
4	5T07-1701203	3 <sup>rd</sup> gear assy. countershaft	1	
5	5T07-1701201	4 <sup>th</sup> gear assy. countershaft	1	
6	GB/T 297-1994	Bearing 33005	1	
7	5T07-1701240	Needle bearing, 1 <sup>st</sup> gear	1	
8	5T07-1701206	Synchronizer gear ring, 1 <sup>st</sup> gear	1	
9	5T07-1701223	Synchronizer spring, 1 <sup>st</sup> and 2 <sup>nd</sup> gear	2	
10	5T07-1701220	Synchronizer assy. , 1 <sup>st</sup> and 2 <sup>nd</sup> gear	1	
11	5T07-1701224	Synchronizer hub, 1 <sup>st</sup> and 2 <sup>nd</sup> gear	1	
12	5T07-1701221	Synchronizer sleeve, 1 <sup>st</sup> and 2 <sup>nd</sup> gear	1	
13	5T07-1701222	Synchronizer block, 1 <sup>st</sup> and 2 <sup>nd</sup> gear	3	
14	5T07-1701205	Synchronizer ring , 1 <sup>st</sup> and 2 <sup>nd</sup> gear	1	
15	GB/T 7918-1997	Needle bearingK30×35×25	1	
16	5T07-1701204	Synchronizer gear ring, 2 <sup>nd</sup> gear	1	
17	5T07-1701202	Gear sleeve, 3 <sup>rd</sup> and 4 <sup>th</sup> gear	1	
18	GB/T 297-1994	Bearing 32004	1	
19	5T07-1701005	Regulator, counter shaft bearing	1	

This exploded view diagram illustrates the assembly of a mechanical component, likely a pump or motor. The parts are numbered 1 through 22. The assembly is shown in three main sections. The top section contains parts 15, 16, 3, 4, 17, 5, 18, 19, 20, and 21. The middle section contains parts 7, 2, 8, 9, 11, 13, 10, 12, and 14. The bottom section contains parts 6, 1, and 22. The parts are arranged in a way that shows their relative positions and how they fit together. For example, part 1 is a long shaft with a gear at one end, and part 22 is a long, thin component that fits around it. Part 15 is a small gear, and part 21 is a small nut or cap screw. The diagram is a technical drawing with clear lines and numbers, typical of a repair manual.

[illegible]

Fig. 14-3

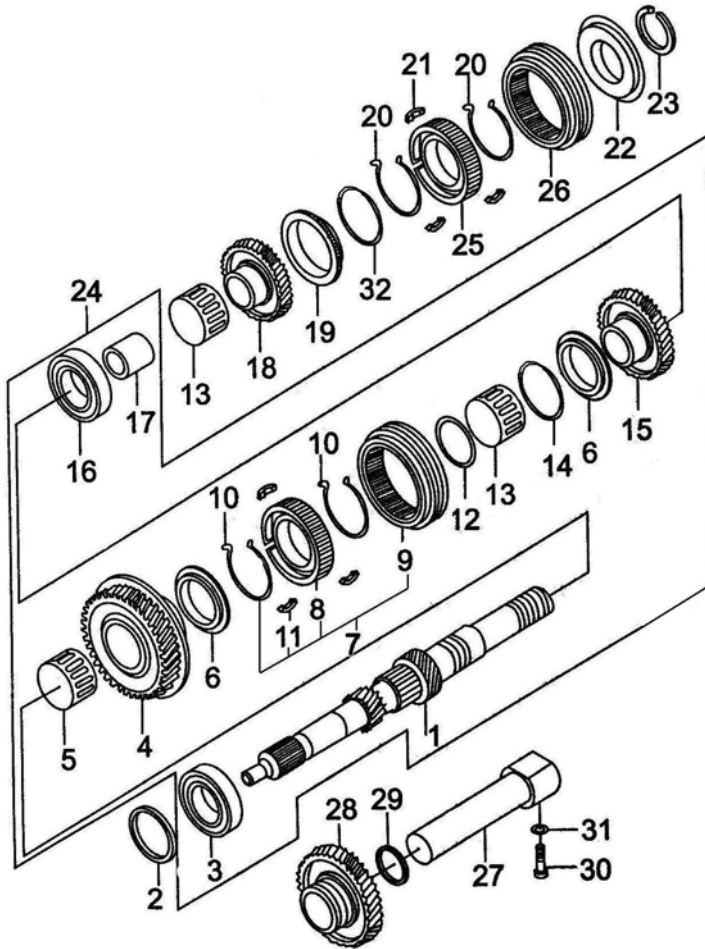


Fig. 14-3 Transmission assembly(five gear) – input shaft and reserve shaft

No.	Part Number	Name	Quantity	Note
1	5T07A-1701101	Input shaft	1	
2	5T07-1701080	Gasket, input shaft	1	
3	GB/T 276-1994	Bearing 6204/P53	1	
4	5T07-1701140	3 <sup>rd</sup> gear, input shaft	1	
5	5T07-1701150	Needle bearing, 3 <sup>rd</sup> gear	1	
6	5T07-1701102	Synchronizer gear ring, 3 <sup>rd</sup> and 4 <sup>th</sup> gear	2	
7	5T07-1701130	Synchronizer assy. gear ring, 3 <sup>rd</sup> and 4 <sup>th</sup> gear	1	
8	5T07-1701134	Synchronizer gear hub, 3 <sup>rd</sup> and 4 <sup>th</sup> gear	1	
9	5T07-1701131	Synchronizer gear sleeve, 3 <sup>rd</sup> and 4 <sup>th</sup> gear	1	
10	5T07-1701133	Synchronizer spring ring, 3 <sup>rd</sup> and 4 <sup>th</sup> gear	2	
11	5T07-1701132	Synchronizer block, 3 <sup>rd</sup> and 4 <sup>th</sup> gear	3	
12	5T07-1701103	Synchronizer ring, 3 <sup>rd</sup> and 4 <sup>th</sup> gear	1	
13	GB/T 7918-1997	Needle bearing K25×30×24	2	
14	5T07-1701105	Synchronizer gear spring, 4 <sup>th</sup> gear	1	
15	5T07-1701120	4 <sup>th</sup> gear sssy. Input shaft	1	
16	5T07-1701110	Left bearing, input shaft	1	
17	5T07-1701101	Gear sleeve, 5 <sup>th</sup> gear	1	
18	5T07-1701030	5 <sup>th</sup> gear assy., input shaft	1	
19	5T07-1701007	Synchronizer gear ring, 5 <sup>th</sup> gear	1	

Fig. 14-3

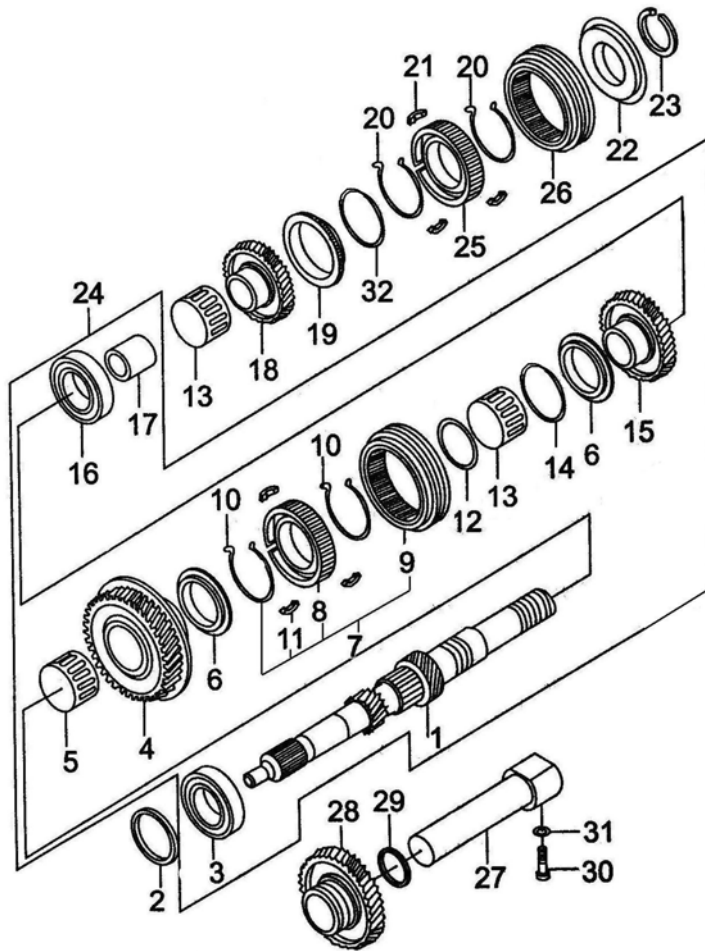


Fig. 14-3 Transmission assembly(five gear) – input shaft and reserve shaft

No.	Part Number	Name	Quantity	Note
20	5T07-1701043	Synchronizer spring, 5 <sup>th</sup> gear	2	
21	5T07A-1701012	Synchronizer block, 5 <sup>th</sup> gear	3	
22	5T07-1701008	Synchronizer plate, 5 <sup>th</sup> gear	1	
23	GB/T 894.1-1986	Ring 20	1	
24	5T07-1701100	Input shaft assy.	1	
25	5T07A-1701013	Synchronizer gear hub, 5 <sup>th</sup> gear	1	
26	5T07A-1701010	Synchronizer gear sleeve, 5 <sup>th</sup> gear	1	
27	5T07-1701061	Idle wheel shaft, reverse gear	1	
28	5T07-1701070	Idle wheel assy. Reverse gear	1	
29	5T07-1701053	Ring, idle wheel reverse gear	1	
30	5T07-1701057	Fasten bolt, reverse gear shaft	1	
31	5T07-1701052	Gasket, reverse gear shaft	1	
32	5T07-1701601	Synchronizer gear ring spring, 5 <sup>th</sup> gear	1	



Fig. 14-4

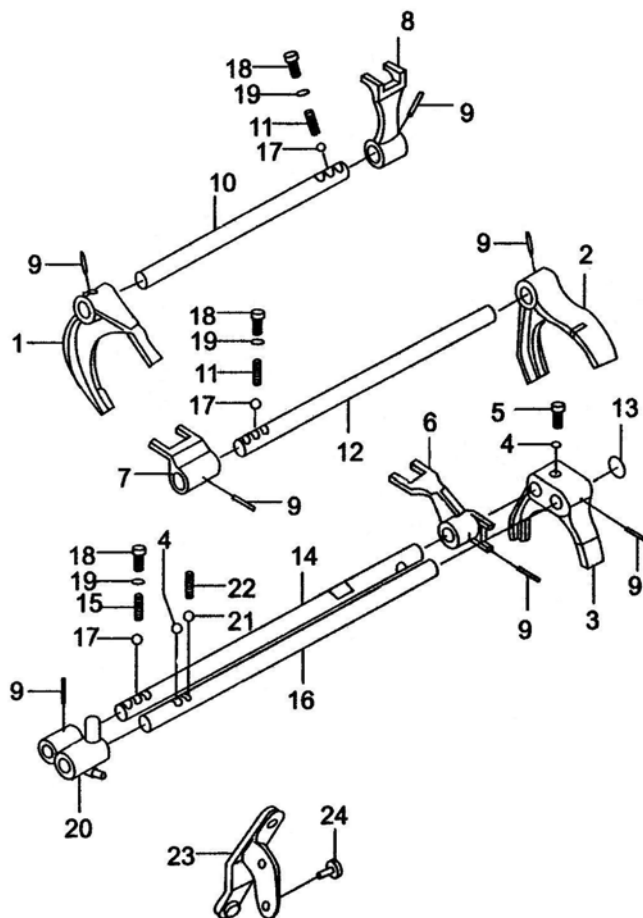


Fig. 14-4 Transmission assembly(five gear) – fork and fork shaft

No.	Part Number	Name	Quantity	Note
1	5T07-1702048	Shift fork, 1 <sup>st</sup> and 2nd gear	1	
2	5T07-1702041	Shift fork, 5th gear	1	
3	5T07-1702005	Shift for, 5 <sup>th</sup> gear	1	
4	GB/T 308-1984	Steel ball 7.9375	2	
5	5T07-1702006	Plug, 5 <sup>th</sup> gear shift fork	1	
6	5T07-1702042	Fork, 5 <sup>th</sup> reverse	1	
7	5T07-1702061	Fork, 3 <sup>rd</sup> and 4th	1	
8	5T07-1702049	Fork, 1 <sup>st</sup> and 2nd	1	
9	GB/T 879-1986	Pin 4.5×20	7	
10	5T07-1702044	Shift rod, 1 <sup>st</sup> and 2nd	1	
11	5T07-1702067	Fasten spring, shift rod	2	
12	5T07-1702009	Shift rod, 3th and 4th	1	
13	GB/T 896-1986	Ring 12	1	
14	5T07-1702008	Shift rod, 5th reverse	1	
15	5T07-1702069	Fasten spring, 5 <sup>th</sup> reverse rod	1	
16	5T07-1702007	Shift guide rod, 5 <sup>th</sup> reverse	1	
17	GB/T 308-1984	Steel ball 7.9375	3	
18	ZBT31033-1988	Bolt M10×1.25×9	3	

This diagram illustrates the exploded view of a mechanical assembly, likely a hinge or latch mechanism. The components are numbered as follows:

- 1**: A curved bracket or arm.
- 2**: A curved bracket or arm, similar to 1 but with a different profile.
- 3**: A small rectangular plate or washer.
- 4**: A small cylindrical pin or bush.
- 5**: A small cylindrical pin or bush.
- 6**: A small rectangular plate or washer.
- 7**: A cylindrical component, possibly a bush or sleeve.
- 8**: A small cylindrical pin or bush.
- 9**: A small cylindrical pin or bush, appearing in multiple locations.
- 10**: A long, thin rod or shaft.
- 11**: A small cylindrical pin or bush.
- 12**: A long, thin rod or shaft, similar to 10.
- 13**: A small cylindrical pin or bush.
- 14**: A small rectangular plate or washer.
- 15**: A small cylindrical pin or bush.
- 16**: A long, thin rod or shaft, similar to 10 and 12.
- 17**: A small cylindrical pin or bush.
- 18**: A small cylindrical pin or bush.
- 19**: A small cylindrical pin or bush.
- 20**: A cylindrical component, possibly a bush or sleeve.
- 21**: A small cylindrical pin or bush.
- 22**: A small rectangular plate or washer.
- 23**: A small rectangular plate or washer.
- 24**: A small cylindrical pin or bush.

The diagram shows how these parts are assembled into a functional mechanism, with various pins, washers, and rods connecting the brackets and plates.

[illegible]

Fig. 14-5

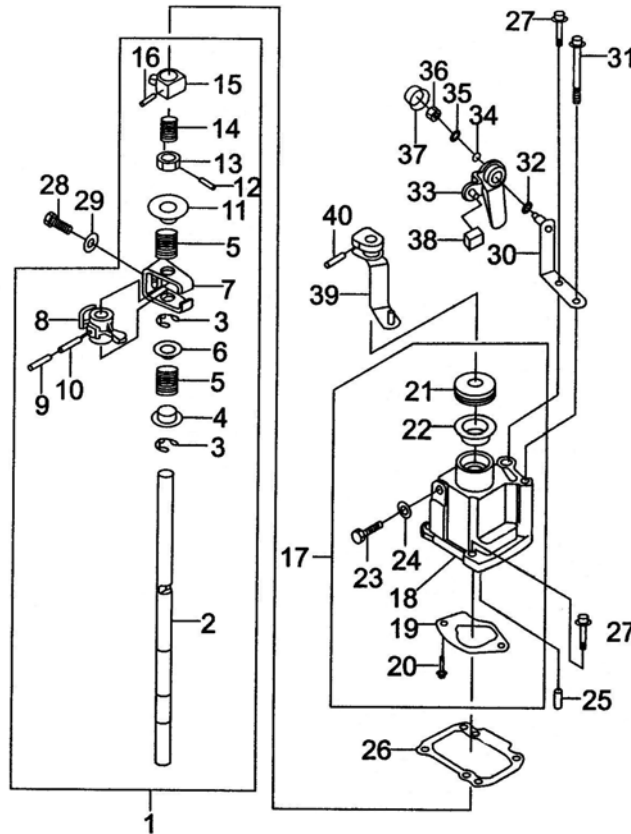


Fig. 14-5 Transmission assembly(five gear) – gear shift assembly

No.	Part Number	Name	Quantity	Note
1	5T07-1702100	Shift lever shaft assy.	1	
2	5T07-1702101	Shift lever shaft	1	
3	GB/T 896-1986	Ring 12	2	
4	5T07-1702102	Shift lever shaft sleeve(left)	1	
5	5T07-1702103	Spring, shift lever shaft	2	
6	5T07-1702104	Gasket, shift lever shaft	1	
7	5T07-1702107	Interlock plate, shift	1	
8	5T07-1702105	Selecting arm, shift	1	
9	GB/T 879-1986	Pin 3.5×28	1	
10	5T07-1702106	Fasten pin, selecting arm	1	
11	5T07-1702112	Selecting sleeve (right), shift	1	
12	GB/T 879-1986	Pin 3×22	1	
13	5T07-1702108	Lock sleeve, reverse limit spring	1	
14	5T07-1702109	Spring, reverse limit	1	
15	5T07-1702111	Limit cam, reverse limit	1	
16	GB/T 879-1986	Pin 5×22	1	
17	5T07-1702070	Case assy., shift selecting shaft	1	
18	5T07-1702071	Case, shift selecting shaft	1	
19	5T07-1702072	Guide plae, shift selecting shaft	1	

Fig. 14-5

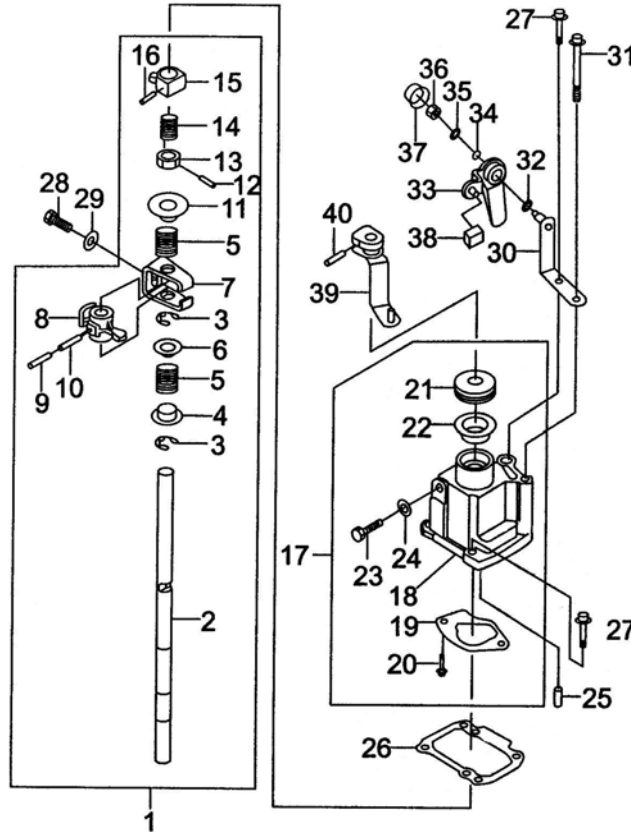


Fig. 14-5 Transmission assembly(five gear) – gear shift assembly

No.	Part Number	Name	Quantity	Note
20	GB/T 5789-1986	Bolt AM6×12	2	
21	5T07-1702062	Dust shield, shift selecting shaft	1	
22	5T07-1702003	Dust shield seat, shift selecting shaft	1	
23	5T07-1702073	Limit bolt, reverse	1	
24	GB/T 97.1-1985	Gasket 8	1	
25	GB/T 119-1986	Pin B6×12	1	
26	5T07-1702002	Gasket, shift selecting shaft case	1	
27	GB/T 5789-1986	Bolt AM8×25	4	
28	5T07-1702065	Limit bolt, shift	1	
29	5T07-1702066	Gasket, limit bolt	1	
30	5T07-1702220	Supporting assy. Positioning arm	1	
31	GB/T 5789-1986	Bolt AM8×75	1	
32	5T07-1702064	Dust gasket, positioning arm	1	
33	5T07-1702210	Positioning arm assy.	1	
34	5T07-1702045	Small gasket, positioning arm	1	
35	5T07-1702046	Large gasket, positioning arm	1	
36	GB/T 6170-1986	Nut M8	1	
37	5T07-1702047	Dust shield, positioning arm	1	
38	5T07-1702063	Positioning block	1	

This exploded view diagram illustrates the assembly of a mechanical device, likely a pump or valve. The components are numbered as follows:

- 1**: Main housing or base plate.
- 2**: Long vertical shaft or rod.
- 3**: Small circular gaskets or washers.
- 4**: Small circular gaskets or washers.
- 5**: Small circular gaskets or washers.
- 6**: Small circular gaskets or washers.
- 7**: Small circular gaskets or washers.
- 8**: Small circular gaskets or washers.
- 9**: Small circular gaskets or washers.
- 10**: Small circular gaskets or washers.
- 11**: Small circular gaskets or washers.
- 12**: Small circular gaskets or washers.
- 13**: Small circular gaskets or washers.
- 14**: Small circular gaskets or washers.
- 15**: Small circular gaskets or washers.
- 16**: Small circular gaskets or washers.
- 17**: Main housing or base plate (repeated).
- 18**: Small circular gaskets or washers.
- 19**: Small circular gaskets or washers.
- 20**: Small circular gaskets or washers.
- 21**: Small circular gaskets or washers.
- 22**: Small circular gaskets or washers.
- 23**: Small circular gaskets or washers.
- 24**: Small circular gaskets or washers.
- 25**: Small circular gaskets or washers.
- 26**: Small circular gaskets or washers.
- 27**: Small circular gaskets or washers.
- 28**: Small circular gaskets or washers.
- 29**: Small circular gaskets or washers.
- 30**: Small circular gaskets or washers.
- 31**: Small circular gaskets or washers.
- 32**: Small circular gaskets or washers.
- 33**: Small circular gaskets or washers.
- 34**: Small circular gaskets or washers.
- 35**: Small circular gaskets or washers.
- 36**: Small circular gaskets or washers.
- 37**: Small circular gaskets or washers.
- 38**: Small circular gaskets or washers.
- 39**: Small circular gaskets or washers.
- 40**: Small circular gaskets or washers.

[illegible]

Fig. 14-6

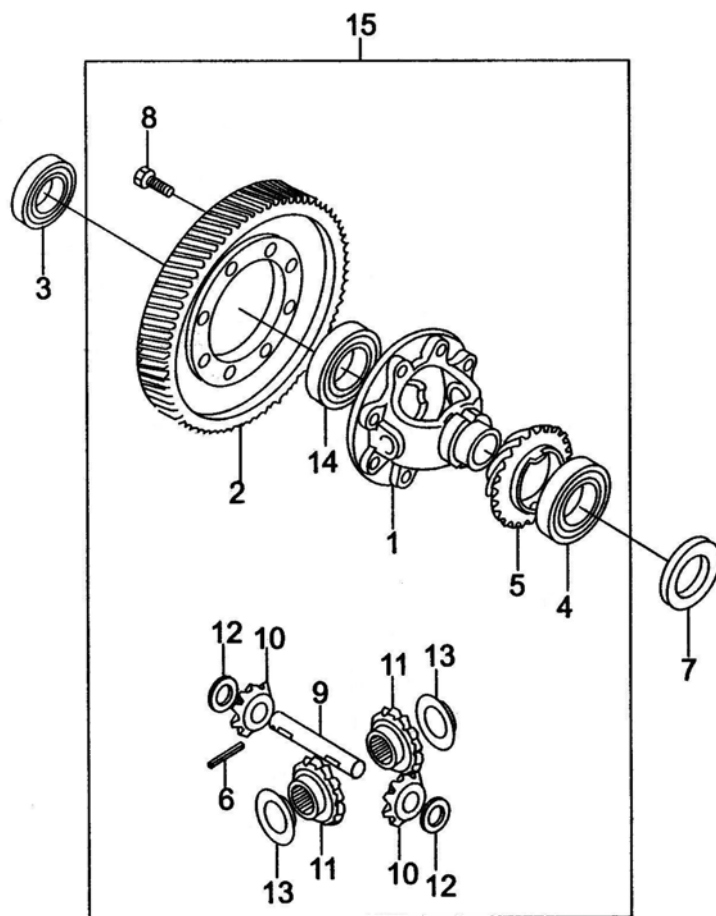


Fig. 14-6 Transmission assembly(five gear) – differential assy.

No.	Part Number	Name	Quantity	Note
1	5T07-1701308	Housing, differential	1	
2	5T07A-1701301	Main deceleration gear	1	
3	5T07-1701010	Gasket(left), differential	1	
4	GB/T 276-1994	Bearing 6007/P63	1	
5	5T07-1701307	Drive gear, speed meter	1	
6	GB/T 879-1986	Pin 5×36	1	
7	5T07-1701090	Gasket(right) differential	1	
8	GB/T 5787-1986	Bolt AM10×1.25×23-10.9	8	
9	5T07-1701303	Shaft, gear	1	
10	5T07-1701304	Gear	2	
11	5T07-1701305	Gear	2	
12	5T07-1701302	Gasket, gear	2	
13	5T07-1701306	Gasket	2	
14	GB/T 276-1994	Bearing 6207/P63	1	
15	5T07-1701300	Differential assy.	1	

Fig. 15

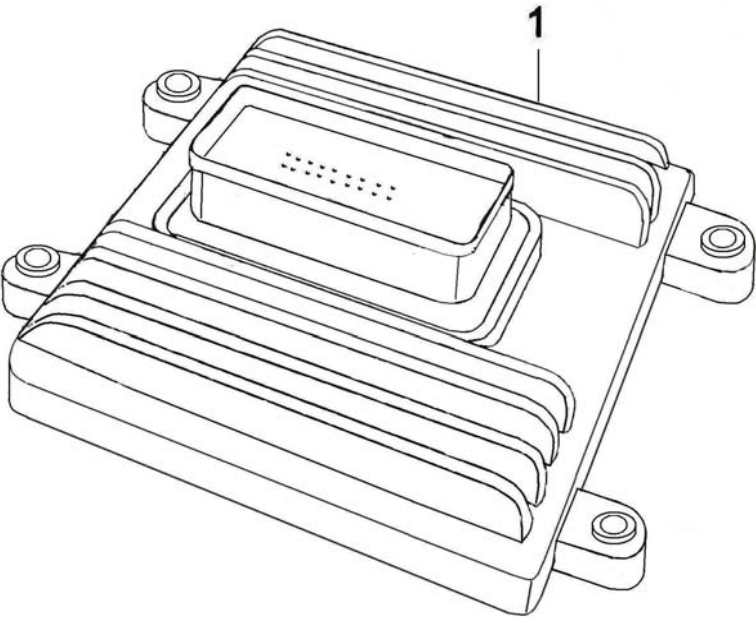


Fig. 15 engine electric control unit ( ECU )

No.	Part Number	Name	Quantity	Note
1	16269560	Engine electric control unit ( ECU )	1	