

Owner's manual

Parts manual

JNSZ150DS

READ THIS MANUAL CAREFULLY

IT CONTAINS IMPORTANT SAFETY INFORMATION.

**MINIMUM
RECOMMENDED
OPERATOR AGE**

8



FOR OFF-ROAD USE ONLY

This vehicle is designed and manufactured for off-road use only.

USA only;

It does not confirm to federal motor vehicle safety standards, and operation on public streets, roads, or highways is illegal

JNSZ150DS Limited Warranty

The warranty policy applies to those cases where the new seller vehicle is unloaded from its shipping container, set up and delivered by authorized dealer, and under normal use and service is found to have defects in parts or workmanship under the following terms and conditions. This warranty covers the engine and engine related components for a period of 90 days.

This warranty does not apply to any part, which in opinion of seller was defective because of improper maintenance, improper assembly, alterations, abuse, negligence or accident.

Should warranty service be required on your JNSZ150DS during the 90 days warranty period, please contact your nearest authorized dealer for repairs.

What is not covered under this warranty

This warranty does not cover any seller vehicle that has been subjected to:

- a.** This warranty does not cover any seller vehicle in any way so to adversely affect its safety or reliability.
- b.** Renting
- c.** Disassembly, adjusting, or repairing of the vehicle in any way so as to adversely affect its safety or reliability.
- d.** Competition or racing

The warranty does not cover loss of use of the seller vehicle, loss of time, inconvenience, or other consequential damage which includes, but is not limited to, loss or damage to persons or property or any expense of returning any damaged units to the seller distributor or its authorized dealer.

Seller has the right to make changes without notice.

CONTENTS

OWNER'S MANUAL.....	4
FOREWORD	4
A FEW WORDS ABOUT SAFETY	5
IMPORTANT SAFETY INFORMATION	6
SAFETY LABELS.....	8
ARE YOU READY TO DRIVE?.....	9
IS YOUR VEHICLE READY TO DRIVE?	11
SAFE DRIVING PRECAUTIONS.....	13
SAFE DRIVING PRECAUTIONS.....	14
SPECIFICATIONS	15
OPERATION.....	16
OPERATION.....	18
SERVICE INSTRUCTIONS.....	19
REPAIR.....	22
PERIODICAL CHECK AND SERVICES.....	23
PARTS MANUAL	25
1 CYLINDER HEAD ASSY.....	25
2 CYLINDER ASSY.....	27
3 CRANKCASE ASSY.(1)	28
4 CRANKCASE ASSY(2)	29
5 CRANKSHAFT CON'ROD&PISTON ASSY.....	31
6 CAMSHAFT ASSY.	32
7 LEFT COVER ASSY.	33
8 FAN COVER AND SHROUD ASSY.	34
9 OIL PUMP ASSY.	35
10 DRIVEN PULLEY AND CLUTCH SUBASSY.	36
11 TRANSMISSION ASSY.	37
12 ELECTRIC SYSTEM	38
13 ELECTRIC STARTER ASSY.	39
14 DRIVE PULLEY SUBASSY.	40
15 GOMP. OF GY REVER SE GEAR ENGINE.....	41
16 CARBURETOR	43
17 FRAME.....	45
18 PROTECTIVE BAR.....	47
19 FRONT SUSPENSION.....	49
20 CONTROL SYSTEM ASSEMBLY.....	52
21 REAR SUSPENSION.....	56
22 MID AXIS ASSEMBLY.....	58
23 ENGINE SYSTEM ASSEMBLY.....	59
24 FUEL TANK.....	62
25 ELECTRICAL APPLIANCE.....	63
26 OTHER PARTS.....	64
PREPARATION ATTACH INSTRUCTION.....	65

ATTACH BATTERY.....	65
ATTACH PROTECTIVE BARS.....	66
ATTACH REAR SHOCK	66
ATTACH TRAILING ARM.....	67
ATTACH BRAKE PIPE.....	67
ATTACH FRONT SHOCK.....	68
ATTACH FRONT TIRE.....	69
DEALER PRE-DELIVERY INSPECTION	70

OWNER'S MANUAL

FOREWORD

Thank you for choosing JOYNER Go-Kart. We hope you will have fun with it. Before you start operate the Go-Kart, please read through this Owner's Manual carefully as it contains important safety and maintenance information. Failure to follow the warnings contained in this manual can result in serious injuries.

Be sure to follow the recommended maintenance schedule and service your kart accordingly. Preventive maintenance is extremely important to the longevity of your Go-Kart.

JOYNER believes in conservation and protection of earth's natural resources. To that end, we encourage every vehicle owner to recycle, trade in, or properly dispose of, as appropriate, used motor oil, coolant, and other fluids, batteries, and tires.

We hope you will have a pleasant experience with our products.

A FEW WORDS ABOUT SAFETY


In order to keep everyone safe, you must take responsibility for the safe operation of your Go-Kart.

To help you make informed decisions about safety, we have provided operating procedures and other information on labels and in this manual. This information alerts you to potential hazards that could hurt you or others.

It is not practical or possible to warn you about all hazards associated with operating or maintaining a Go-Kart. You must use your own good judgment.

You will find important safety information in a variety of forms, including:

Safety Labels - On the Go-Kart.

Safety Messages – Preceded by a safety alert symbol  and one of two signal words: **WARNING**, or **CAUTION**.

These signal words mean:



Physical harm may result from failure to adhere to the instructions that are described within the **WARNING** labels.

Safety Headings --- such as Important Safety Reminders or Important Safety Precautions.

Safety Section --- such as Go- Kart Safety.

Instructions --- how to use this Go –Kart correctly and safely.

This entire manual is filled with important safety information----please read it carefully.

IMPORTANT SAFETY INFORMATION

Your Go-Kart will provide you with many years of service and pleasure. Providing you take responsibility for your own safety and understand the challenges you can meet while driving.

There is much that you can do to protect yourself when you drive. You'll find many helpful recommendations throughout this manual. The following are a few that we consider most important.

Follow the Age Recommendation

It is strongly recommended that no one under the age of 8 be permitted to drive this Go-Kart without adult supervision.

Always Wear a Helmet

It's a proven fact: helmets significantly reduce the number and severity of head injuries. Always wear an approved motorcycle helmet. We also recommend that you wear eye protection, sturdy boots, gloves, and other protective gear.

Drive Off-Road Only

Your Go-Kart is designed and manufactured for off-road use only. The tires are not made for pavement, and the Go-Kart does not have turn signals and other features required for use on public roads. If you need to cross a paved or public road, get off and walk your Go-Kart across.

Take Time to Learn & Practice

Even if you have driven other Go-Kart, take time to become familiar with how this Go-Kart works and handles. Practice in a safe area until you build your skills and get accustomed to this Go-Kart's size and weight.

Because many accidents involve inexperienced or untrained drivers, we urge all drivers to take a training course approved by the Go-Kart Safety Institute. Check with your dealer for more information on training courses.

Be Alert for Off-Road Hazards

The terrain can present a variety of challenges when you drive off-road. Continually "read" the terrain for unexpected turns, drop-offs, rocks, ruts, and other hazards. Always keep your speed low enough to allow time to see and react to hazards.

Drive within Your Limits

Pushing limits is another major cause of Go-Kart accidents. Never drive beyond your personal abilities or faster than conditions warrant. Remember that alcohol, drugs, fatigue, and inattention can significantly reduce your ability to make good judgments and driver safely.

Don't Drink and Drive

Alcohol and driving don't mix. Even one drink can reduce your ability to respond to changing conditions, and your reaction time gets worse with every additional drink. So don't drink and drive, and don't let your friends drink and drive either.

IMPORTANT SAFETY INFORMATION

Never run your Go- Kart indoors.

The exhaust from the engine contains a tasteless, odorless and poisonous gas called carbon monoxide.

Keep away from moving parts of the Go-Kart

The operator of the Go-Kart should never place their hands or other parts of their body near any moving part of the Go-Kart. Failure to adhere to this warning will cause physical harm to your body.

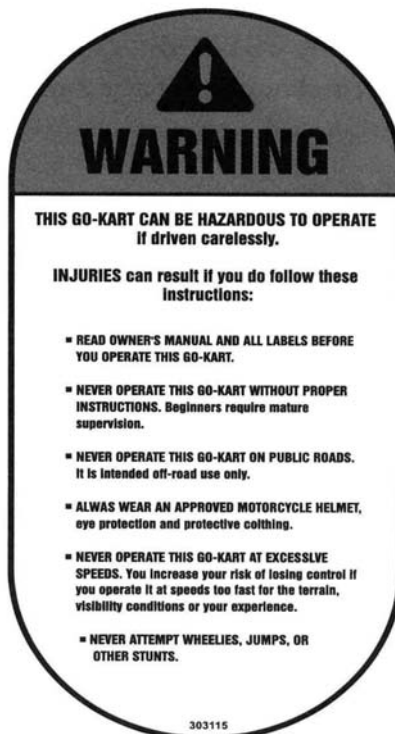
Skidding or Sliding

The terrain surface can be a major factor affecting turns, Skidding a turn is more likely to occur on slippery surfaces such as snow, ice, mud and loose gravel. If you skid on ice, you may lose all directional control. To avoid skidding on slippery terrain, keep your speed low and drive carefully.

SAFETY LABELS

This section presents some of the most important information and recommendations to help you drive your Go-Kart safely. Please take a few moments to read these pages.

The labels be considered permanent parts of the Go-Kart. If a label comes off or becomes hard to read, contact your dealer for warning labels replacements.



ARE YOU READY TO DRIVE?

Before each drive, you need to make sure you and your Go-Kart are both ready to drive. To help get you prepared, this section discusses how to evaluate your driving readiness, what items you should check on your Go-Kart, and adjustments to make for your comfort, convenience, or safety.

Before you drive your Go-Kart for the first time, we urge you to:

- Read this owner's manual and the labels on your Go-Kart carefully.
- Make sure you understand all the safety messages.
- Know how to operate all the controls.
- Never drive this Go-kart if under 8 years old.

Before each drive, be sure:

- You feel well and are in good physical and mental condition.
- You are wearing an approved motorcycle helmet (with chin strap tightened securely), eye protection, and other protective clothing.
- You don't have any alcohol or drugs in your system.

Protective Apparel

For your safety, we strongly recommend that you always wear an approved motorcycle helmet, eye protection, boots, gloves, long pants, and long-sleeved shirt or jacket whenever you drive.

Although complete protection is not possible, wearing proper gear can reduce the chance of injury when you drive.

The following suggestions will help you choose the proper driving gear.

Helmets and Eyes Protection

Your helmet is your most important piece of driving gear because it offers the best protection against head injuries. A helmet should fit your head comfortably and securely.

An open-face helmet offers some protection, but a full-face helmet offers more. Regardless of the style, look for a DOT (Department of Transportation) sticker in any helmet you buy. Always wear a face shield or goggles to protect your eyes and help your vision.



WARNING

Operating this Go-Kart without wearing an approved motorcycle helmet, eye protection, and protective clothing could increase your chances of head and/or eye injury, possibly death in the event of severe accident.

Always wear approved motorcycle helmet that fits properly and wear eye protection (goggles or face shield), gloves, boots, long-sleeved shirt or jacket and long pants.

Additional Driving Gear

In addition to a helmet and eye protection, we also recommend:

- Sturdy off-road motorcycle boots to help protect your feet, ankles, and lower legs.
- Off-road motorcycle gloves to help protect your hands.
- Driving pants with knee and hip pads, a driving jersey with padded elbows, and a chest/shoulder protector.

ARE YOU READY TO DRIVE?

Drive Training

Developing your driving skills is an on-going process. Even if you have driven other Go-Karts, take time to become familiar with how this Go-Kart works and handles. Practice driving the Go-Kart in a safe area to build your skills. Do not drive in rough terrain until you get accustomed to the Go-Kart's controls, and feel comfortable with its size and weight.



Operating Go-Kart without proper instruction could increase your risk of an accident which could lead to serious injury or death.



**Attempt supporting with your hands to the ground when the Go-Kart turning over could lead to serious injury or death.
Never support with your hands to ground when the Go-Kart will turn over.**

Age Recommendation

It is strongly recommended that no one under the age of 8 be permitted this Go-Kart without adult supervision.



**A child under 8 driving a Go-Kart that is not recommended for his/her age could lose Go-Kart control and result in severe injury or death.
A child under 8 should have adult supervision when operate on the Go-Kart.**

No Alcohol or Drugs

Alcohol, drugs and Go-Karts don't mix. Even a small amount of alcohol can impair your ability to operate a Go-Kart safely. Likewise, drugs ,even if prescribed by a physician, can be dangerous while operating a Go-Kart. Consult your doctor to be sure it is safe to operate a vehicle after taking medication.



Operating this Go-Kart after consuming alcohol or drugs can seriously affect your judgment, cause you to react more slowly, affect your balance and perception, and could result in serious injury or death.

Never consume alcohol or drugs before or while operating this Go-Kart.

IS YOUR VEHICLE READY TO DRIVE?

Before each drive, it is important to inspect your Go-Kart and make sure any problems you find are corrected. A pre-drive inspection is a must, not only for safety, but because having a breakdown, or even a flat tire, can be a major inconvenience.

If your Go-Kart has overturned or has been involved in a collision, do not drive it until your Go-Kart has been inspected by your dealer, There may be damages or other problems you can not see.



Improperly maintaining this Go-Kart or failing to correct a problem before driving can cause a crash in which you can be seriously hurt or killed.

Always perform a pre-drive inspection before every drive and correct any problems.

Pre-drive Inspection

Check the following items before you get on the Go-Kart:

- **Engine Oil**
Check the level and add oil if needed. Check for leaks.
- **Coolant**
Check the coolant and add coolant if need. Check for the leaks.
- **Fuel**
Check the level and add fuel if needed. Also make sure the fuel fill cap is securely fastened. Check for leaks.
- **Tires**
Use a gauge to check the air pressure. Adjust if needed. Also look for signs of damages or excessive wear.
- **Nuts & Bolts**
Check the wheels to see that the axle nuts are tightened, Use a wrench to make sure all accessible nuts, bolts, and fasteners are tight.
- **Pre-drive Inspection**
- **Underbody & Exhaust System**
Check for and remove any dirt, vegetation or other debris that could be fire hazard or interfere with the proper operation of the Go-Kart.
- **Air Cleaner**
Check the air filter. Replace it if need.
- **Leaks, Loose Parts**
Walk around you Go-Kart and look for anything that appears unusual, such as a leak or loose cable.

IS YOUR VEHICLE READY TO DRIVE?

- **Lights**
Make sure the headlight, brake light and tail light are working properly.
- **Throttle**
Check the free play and adjust if needed. Press the throttle to make sure it moves smoothly without sticking, and snaps back automatically when it is released.
- **Clutch cable**
Check the free play of clutch cable and adjust if needed. Press the clutch cable to make sure it moves smoothly without sticking, and snaps back automatically when it is released.
- **Brakes**
Press the brake pedal several times, check for proper brake pedal free play. Make sure there is no brake fluid leakage.
- **Engine Stop**
When engine is running, turn the switch key counterclockwise. Make sure engine stops.
- **Steering Wheel**
Check that the wheels turn properly as you turn the steering wheel.
- **Cable**
Check the cable housing for wear. Check the fittings for looseness. Replace or tighten as needed.
- **Tie rod**
Check the tie rod housing for wear. Check the fittings for looseness. Replace or tighten as needed.

SAFE DRIVING PRECAUTIONS

Off-Road Use Only

Your Go-Kart and its tires are designed and manufactured for off-road use only, not for pavement. Driving on pavement can affect handling and control. You should not drive your Go-Kart on pavement.



WARNING

Operating this Go-Kart on paved surfaces may seriously affect handling and control of the Go-Kart, and may cause the vehicle to go out of control.

Never operate the Go-Kart on any paved surfaces, including sidewalks, driveways, parking lots and streets.

When driving off-road, also remember to always obey local off-road driving laws and regulations. Obtain permission to drive on private property. Avoid posted areas and obey “no trespassing” signs.

You should never drive your Go-Kart on public streets, roads or highways, even if they are not paved. Drivers of street vehicles may have difficulty seeing and avoiding you, which could lead to a collision. In many states it is illegal to operate Go-Karts on public streets, roads and highways.



WARNING

Operating this Go-Kart on public streets, roads or highways can cause collision with other vehicle.

Never operate this Go-Kart on any public streets, roads or highways, even a dirt or gravel one.

Keep Hands and Feet on Controls

Always keep both hands on the steering wheel and both feet on the foot controls. When driving your Go-Kart. It is important to maintain your balance and to control of the Go-Kart. Removing hands or foot away from the controls can reduce your ability to react control of the kart.



WARNING

Removing hand from Steering wheel or feet from foot controls during operation can reduce your ability to control the Go-Kart or could cause you to lose your balance and fall off the Go-Kart.

Always keep both hand on the steering wheel and both feet on the foot controls of your Go-Kart during operation.

SAFE DRIVING PRECAUTIONS

Control Speed

Driving at excessive speed increases the chance of an accident. In choosing a proper speed, you need to consider the capability of your Go-Kart, the terrain, visibility and other operating conditions, plus your own skills and experience.



WARNING

Operating this Go-Kart at excessive speeds increases your chances of losing control of the Go-Kart, which can result in an accident.

Always drive at a speed that is proper for your Go-Kart, the terrain, visibility and other operating conditions, and your experience.

Use Care on Unfamiliar or Rough Terrain

Before driving in a new area, always check the terrain thoroughly. Don't drive fast on unfamiliar terrain or when visibility is limited. (Sometimes it's difficult to see obstructions like hidden rocks, bumps, or holes in time to react).



WARNING

Failure to use extra care when Operating this Go-Kart on unfamiliar terrain could result in the Go-Kart overturning or going out of control.

Go slowly and be extra careful when operating on unfamiliar terrain. Always be alert to changing terrain conditions when operating the Go-Kart.

Never drive past the limit of visibility. Maintain a safe distance between your Go-Kart and other off-road vehicles. Always exercise caution and use extra care on rough, slippery and loose terrain.



WARNING

Failure to use extra care when operating on excessively rough, slippery or loose terrain could cause loss of traction or vehicle control, which could result in an accident, including an overturn.

Do not operate on excessively rough, slippery or loose terrain until you have learned and practiced the skills necessary to control the Go-Kart on such terrain. Always be especially cautious on these kinds of terrain.

Do Not Perform Stunts

You should always operate your Go-Kart in a safe and reasonable manner. When driving, always keep all four wheels on the ground.



WARNING

Attempting wheelies, and other stunts increases the chance of an accident, including an overturn.

Never attempt stunts, such as wheelies or jumps. Don't try to show off.

SPECIFICATIONS

DIMENSIONS

Overall Length	88.6 in. (2250mm)
Overall Width	55.5 in. (1410mm)
Overall Height	57.5 in. (1460mm)
Wheelbase	62.4 in. (1585mm)
Front Track	47.5 in. (1208mm)
Rear Track	47.6 in. (1210mm)
Ground Clearance	10.5 in. (265mm)

ENGINE

Type	1-Bore,4-Stroke, forcedly air-cooled
Bore x Stroke	57.4mm×57.8mm
Displacement	149.5cc
Compression ratio	10.3:1
Carburetor	PD24J
Max Power	6.1kw/8000rpm
Maximum Torque	8.3/7000Nm/r/min
Starting	Electric
Ignition	C.D.I
Lubrication	Force & Splash
Transmission	Automatic(C.V.T system)
Spark Plug	A7RTC
Plug gap	0.6~0.8mm
Fuel type	RQ90
Lubrication oil	SAE-15W/40

CAPACITIES

Maximum load	120kg
Fuel tank	8L
Engine oil	900ml
Starting	≤15s
Climbing	20°-25°
Battery	12V9Ah
Head Light	12V 18/18W/Both
Tail Light	12V 5/21W/Both
spot Light	12V 18W/Both
main Fuse	15A

SPECIFICATIONS

Brake Track	< 7m @ 20miles/h
Top speed	30 miles/h (or limited as customers require)

CHASSIS

Front, Rear brake	Hydraulic disc, left foot control
Front tire	21×8-10
Rear tire	22×10-10
Front Suspension	Independent Dual A-Arm
Rear Suspension	Independent Dual A-Arm
Final Drive	chain drive

TIRE PRESSURE

Front	40~45kpa 0.4~0.45kg/c m ² 5.8~6.5psi
Rear	50~60kpa 0.5~0.6kg/c m ² 7.3~8.7psi

WEIGHT

Net Weight	270kg
------------	-------

WARRANTY

Parts and workmanship	90 Days
-----------------------	---------

OPERATION

A. Operation controls

WARNING-Do not attempt to start or operate the engine until completely familiar with the location and use of each control necessary to operate this vehicle. The operator must know how to stop this machine before starting and driving it.

a. Throttle

The right foot pedal is the throttle that controls the Go-Kart speed. As the engine speed increased above idle. To disengage the clutch at any time, allow the throttle to return to the idle position. (See Fig. 1)



WARNING

Each time prior to starting the engine, check the throttle assembly to ensure that when pedal is pushed all the way forward the assembly is working smoothly and returns to idle when released. Do not operate if pedal or engine throttle linkage fail to return to idle. If unable to correct the problem through lubrication, adjustment or replacement of worn parts, contact your dealer for assistance.

b. Brake

The left foot pedal is the brake (See Fig. 1). Applying pressure to the pedal draws the brake caliper around the brake pump at the front and rear wheels and slows or stops the kart.

The left foot pedal is the clutch cable that controls the shift (See Fig. 1). Applying pressure to the pedal down, you can shift by shift lever.

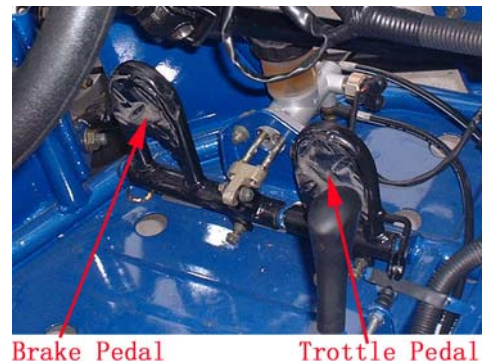


Figure 1

c. Start engine

1. Insert the key into the ignition-switch, then turn to left red point for drive in the daytime or turn to right red point for drive at night...

2. Press down the brake pedal.

3. Press the start switch, and press the throttle slightly at the same time, keep the start switch back after engine started.



Figure 2

d. Engine stop key

Important-stop key test.

Before driving this vehicle, test the

Engine Stop key to assure that it is operating properly. With the engine running, turn the key counterclockwise on the "off" for the engine shut down.

OPERATION

e. Pre-Drive Inspection



WARNING

Perform this pre-drive inspection everyday before driving vehicle. If not performed, serious damage to the vehicle or personal injury may result.

1. Check for Engine Oil Level. Check for transmission Oil Level. Check for leaks, add oil if required.
2. Check the coolant. Check for leaks, add the coolant if required.
3. Check for Fuel Level. Add fuel as necessary and do not overfill. Check for leaks.
4. Check for Brakes. Depress the rear brake pedal several times, then check for proper brake pedal free play. Make sure there is no brake fluid leakage. Adjust if necessary.
5. Check the clutch cable, Assure the cable snaps back and smooth operation. Assure the clutch can be apart and together very clear. Adjust if necessary, or replace the clutch if necessary.
6. Check Tires. Check tires condition and pressure. The pressure on both Front and Rear tire is 12psi.
7. Check Throttle. Check for smooth operation. Assure throttle “snaps” back to idle.
8. Check Engine Stop key. Perform engine stop key test. Repair as necessary.
9. Check all Nuts, Bolts, and fasteners. Check wheels to see that all axle nuts and lug nuts are tightened properly. Check and tighten as necessary all other fasteners to specified condition.
10. Check Roll Cage Bar. Ensure all protective roll cage bar are in place before operating the Go-Kart.
12. Check Brake Light. Check for proper operation.
13. Check Wheels. Check for tightness of wheel nuts and axle nuts; check that axle nuts are secured by cotter pins.
14. Check Steering. Check for free operation for any unusual looseness in any area.



WARNING

Always follow rules for safe operation and wear a helmet.

f. Passengers

The vehicle allows for two riders only. Combine maximum weight of driver and the passenger should not exceed 120kg or 264lbs.

g. Seat Adjustment

The seat must always be securely fastened in the position which best affords the operator control of the foot pedals, steering wheel, and the remote stop key.



Figure 3

OPERATION

- a. Pull seat adjustment handle upward to disengage seat slide.
- b. Move seat to desired position.
- c. Be sure seat adjustment handle snaps back into place and that seat is locked into position. (See Fig. 3)



WARNING

Before attempting to adjust the seat ensure that engine of the Go-Kart is stopped.



WARNING

Never operate this Go-Kart when the provided seat is not securely fastened, to do so could result in a strong possibility of severe personal injury or loss of life. Before attempting to adjust the seat ensure that engine of Go-Kart is stopped.

h. Reverse Adjustment

Press down the shift lever to the “F” position so that the unit can move forward ,pull back the lever to “R” so that the unit can move backward.(See Fig.4)

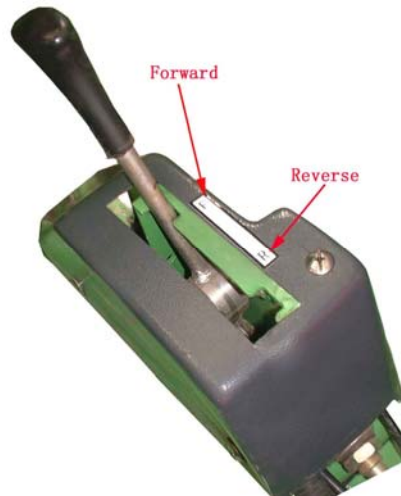


Figure 4

i. Starting And Operating Instructions

- a. Before starting the engine, be sure that the driver is seated properly in the Go-Kart and tighten the seatbelt.
- b. Testing the Go-Kart in a open place at the beginning to learn how to start, turn and stop.
- c. Operate the Go-Kart slowly until you are familiar with it.
- e. The turning radius of this Go-Kart is small and agile, so the centrifugal force is very high when turning at high speed. Slow down to a more controllable speed when turning to prevent the Go-Kart from rolling over.
- f. To prevent vehicle from rolling over, be sure to only turn the vehicle at a slow more controllable speed. Heel on the ramp of the main board when turning. Keep your leg rely on the foot pedal, you can feel the kart is stable because of the gravity is adjusted and won't roll over.

SERVICE INSTRUCTIONS

A. Service Air Cleaner

Service air cleaner every 80 hours

NOTE: Service more often under dusty conditions.

- a. Remove cleaner cover (See Fig. 6)

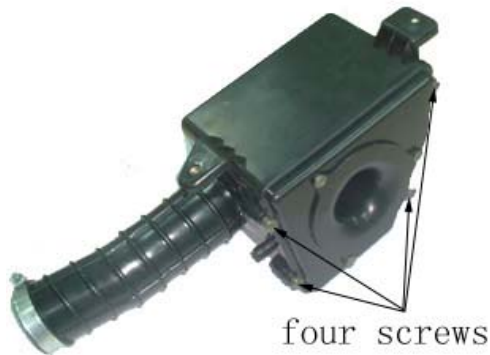


Figure 5

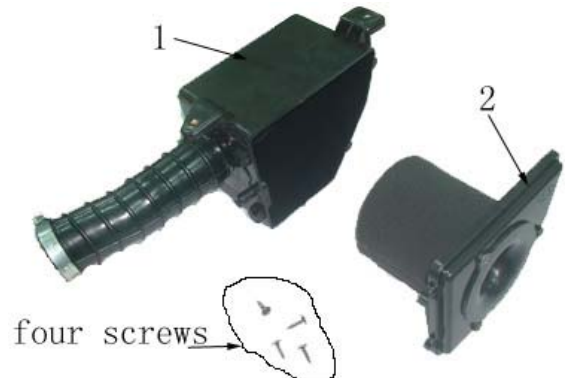


Figure 6

- b. Remove air cleaner filter (See Fig. 8)



Figure 7

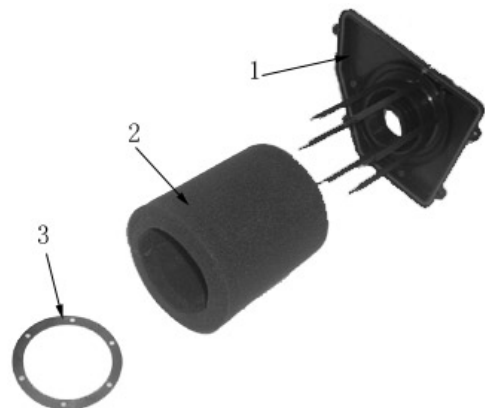


Figure 8

- c. Check the air cleaner filter, if the filter is dusty, please replace with a new one.

B. Engine Lubrication

Engine oil replacement

You must change the oil in the crankcase after the first 5 hours of operating of your new engine and after 10 hours of use thereafter. That will insure proper lubrication of internal parts and prevent costly repairs due to excessive wear.

SERVICE INSTRUCTIONS



Figure 9



Figure 10



Figure 11

- Put the vehicle on the level ground.
- Shut down the engine, put a collecting oil plate under the engine oil outlet. Loosen the oil outlet plug in the warm engine. Let the engine oil out fully (see **Fig. 9**).
- Tighten the engine oil outlet plug.
- Open the cover of engine oil inlet (see **Fig. 9**), fill oil (SAE 15W/40) about 0.9 liters to the engine.
- Pull out the engine oil level (see **Fig. 10**), confirm the corrective oil level in the crankcase (see **Fig. 11**)

Check engine oil and recharge

- If the color of engine oil changes, need to replace engine oil. Replace engine oil as above.
- Check the engine oil level, recharge if necessary from **d** as above.

C. Spark Plug

- Remove the spark plug and inspect it each time you change the oil.
(Use a spark plug wrench) The electrodes should be kept clean and free of carbon. The presence of carbon or excess oil will greatly reduce proper engine performance. If possible, check the spark plug gap (area between electrodes) using a wire feeler gauge. This specification is 0.025"~0.030".
- Before installing spark plug coat threads lightly with graphite grease if possible, to ensure easy removal next time the spark plug needs inspection (see **Fig. 12**).
- It is advisable to replace the spark plug at least once a year to insure easy starting and good engine performance

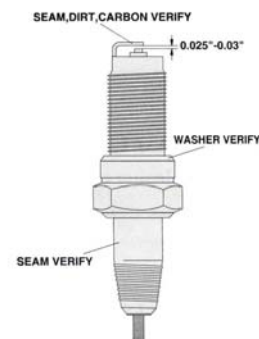


Figure 12

SERVICE INSTRUCTIONS

D. Carburetor Adjustment

Never make unnecessary adjustments. The factory recommended settings are correct for most applications. It's not necessary to disassemble the screw unless the carburetor needs to be replaced. Prepare a 50r/w tachometer before adjustment.

- Warm up the engine (5~10min)
- Tighten the air screw gentle. Back out 2-3/8 turns counter clockwise (see Fig. 13).
- Connect the tachometer, adjust the throttle to limit the idle speed. The standard value is (1400RPM).
- Turn the air screw counter slowly and observe the RPM of the engine, stop adjusting as the RPM reaches the top speed.
- Adjust the screw and adjust the idle speed to an ideal value.
- Repeat step **d** and **e** until the rotate speed of engine stables.

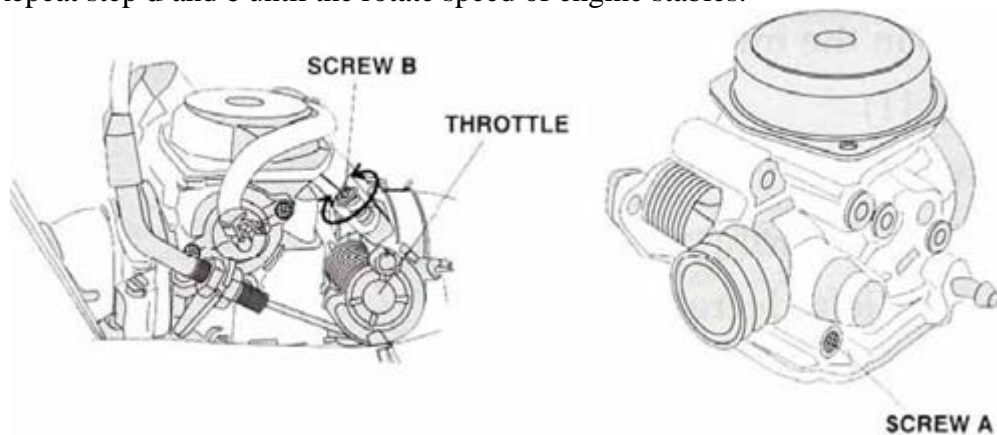


Figure 13

E. Cleaning Instructions

Keep your kart clean. With a clean rag, wipe off the dirt and oil around controls. Wipe off any spilled fuel and oil. Keep the engine clean of foreign object and be sure to check that air intake fan is free of debris for proper cooling.

F. Kart Lubrication

Lubricate vehicle every 90 days of use, Apply several drops of oil in specific points.

G. Storage Instruction

In the event your kart is not to be operated for periods in excess of 30 days or at the end of each driving season prepare for storage as follows:

- Drain fuel tank and carburetor by allowing engine to run out of fuel, or use a fuel stabilizer.
- Lubricate engine cylinder by removing the spark plug and pour one ounce of clean lubricating oil through the spark plug hole into the cylinder. Crank the engine slowly to spread oil and replace spark plug.
- Do not save or store gasoline over winter. Using old gasoline, which has deteriorated from storage, will cause hard starting and affect engine performance.



WARNING

Do not drain fuel while engine is hot. Be sure to move Go-Kart outside before draining fuel.

REPAIR

A. Front Wheel Replacement

Do not disassemble the castle nuts when you replace the front wheels.

It is only necessary to tighten the nuts so that the wheel turns freely on the axle with minimum end play. (See Fig. 14) Tighten the nuts after replacing the wheels.

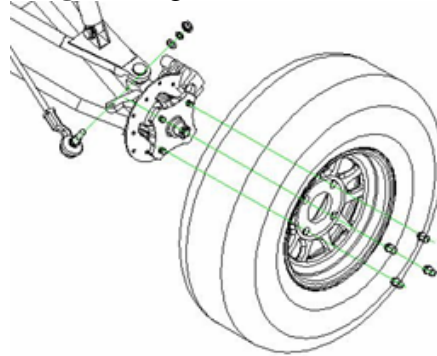


Figure 14

B. Rear Wheel Replacement

Do not disassemble the castle nuts when you replace the front wheels.

It is only necessary to tighten the nuts so that the wheel turns freely on the axle with minimum end play. (See Fig. 15) Tighten the nuts and put on the cotter Pin after replacing the wheels.

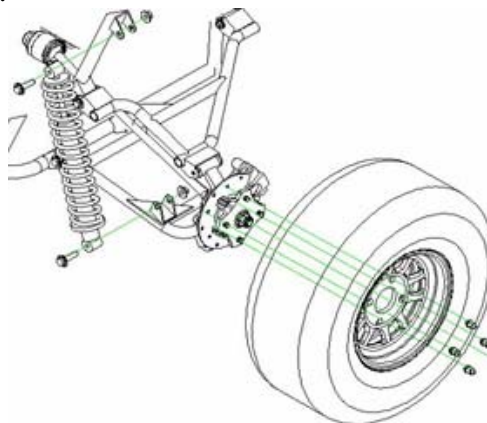


Figure 15

C. Front Wheel Alignment

- Put the vehicle on level plate firmly.
- The “toe-in” front wheels should be 0.4-0.6 inches. To check for alignment, measure distance A and B between the centerline (CL) of the wheels. The proper toe-in dimension A should be 0.4-0.6 inches greater than dimension B.
- To adjust the alignments, loose the lock nuts on both sides of Front Tie Rods. To make Dimension B smaller, scare the rod to the left. Adjust the rod to right direction to make Dimension B larger. After adjusted to desired length, tighten the lock nut against the rod end. Recheck the dimensions for proper alignment.

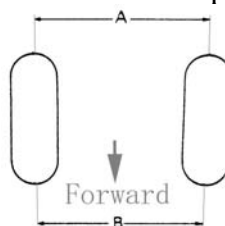


Figure 16

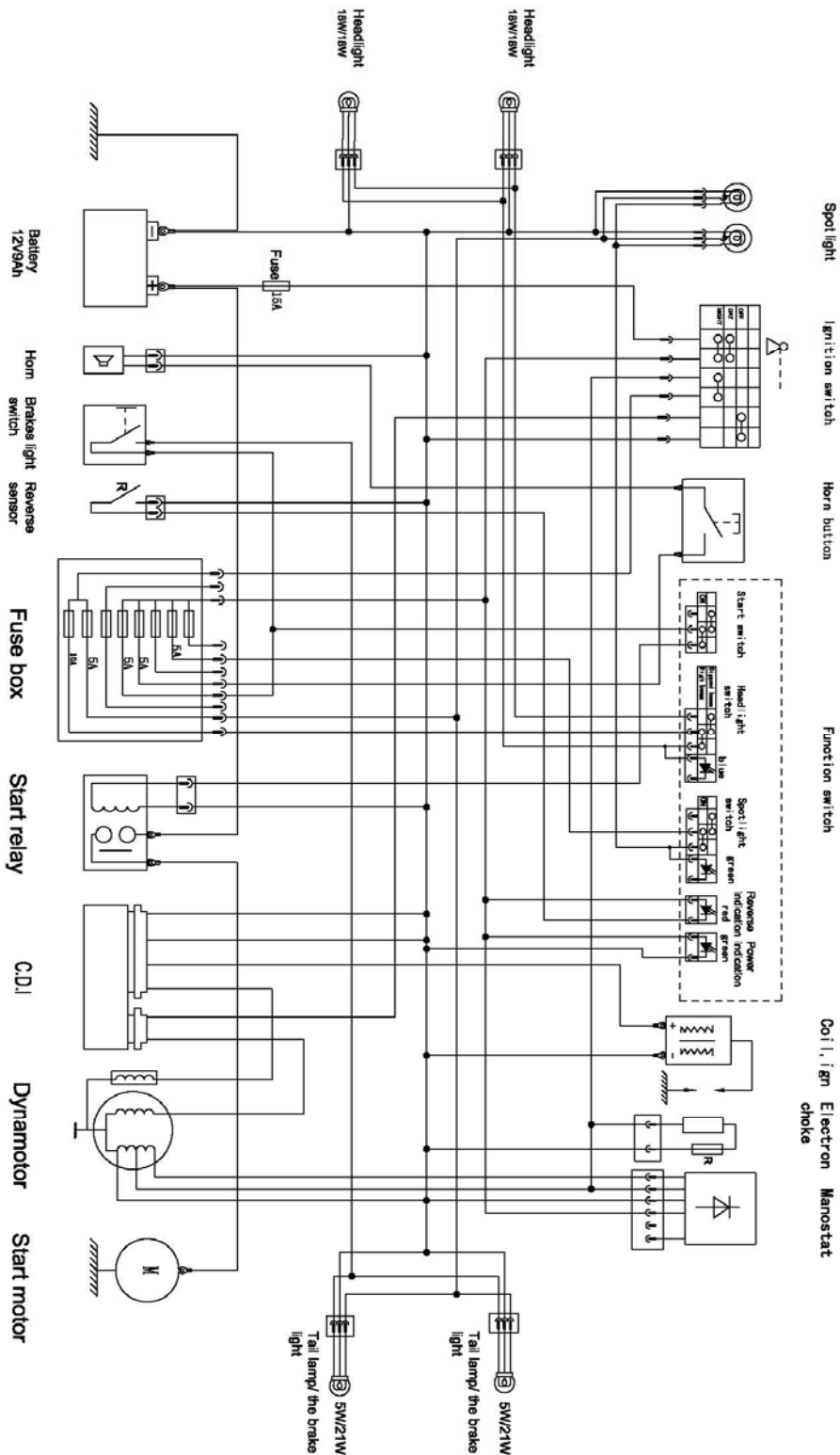
PERIODICAL CHECK AND SERVICES

The maintenance intervals in the following table are based upon average driving conditions. Driving in unusually dusty areas, require more frequent servicing.

Time of service Item	Initial service	Monthly	Quarterly	Yearly
Engine				
1. Fan, driven belt		I	I	R
2. Tighten bolts on engine.	I		I	
3. Engine oil	I		I	
6. Exhaust		I		I
7. Transmission oil		I	R	
Ignition				
10. Air cleaner			C	I
11. Throttle cable		I.A.L		I.R.A
12. Fuel tank cover		I	I.R	
15. Fuel hose and joints	I	I	I.R	
Control system				
16. Wire and plugs			I	
18. Brake fluid, hose, joints			I	
19. The free display of brake pedal, Brake	I	I	I	I
21. Brake shoes and disc			I	I.R
Chassis				
22. Tires		I		R
23. Tighten nuts on the hub and wheel	I	I	I	
24. Shocks			I	
26. All nuts and bolts	I	I	I	I
27. Steering wheel, steering	I		I	
28. Test vehicle				

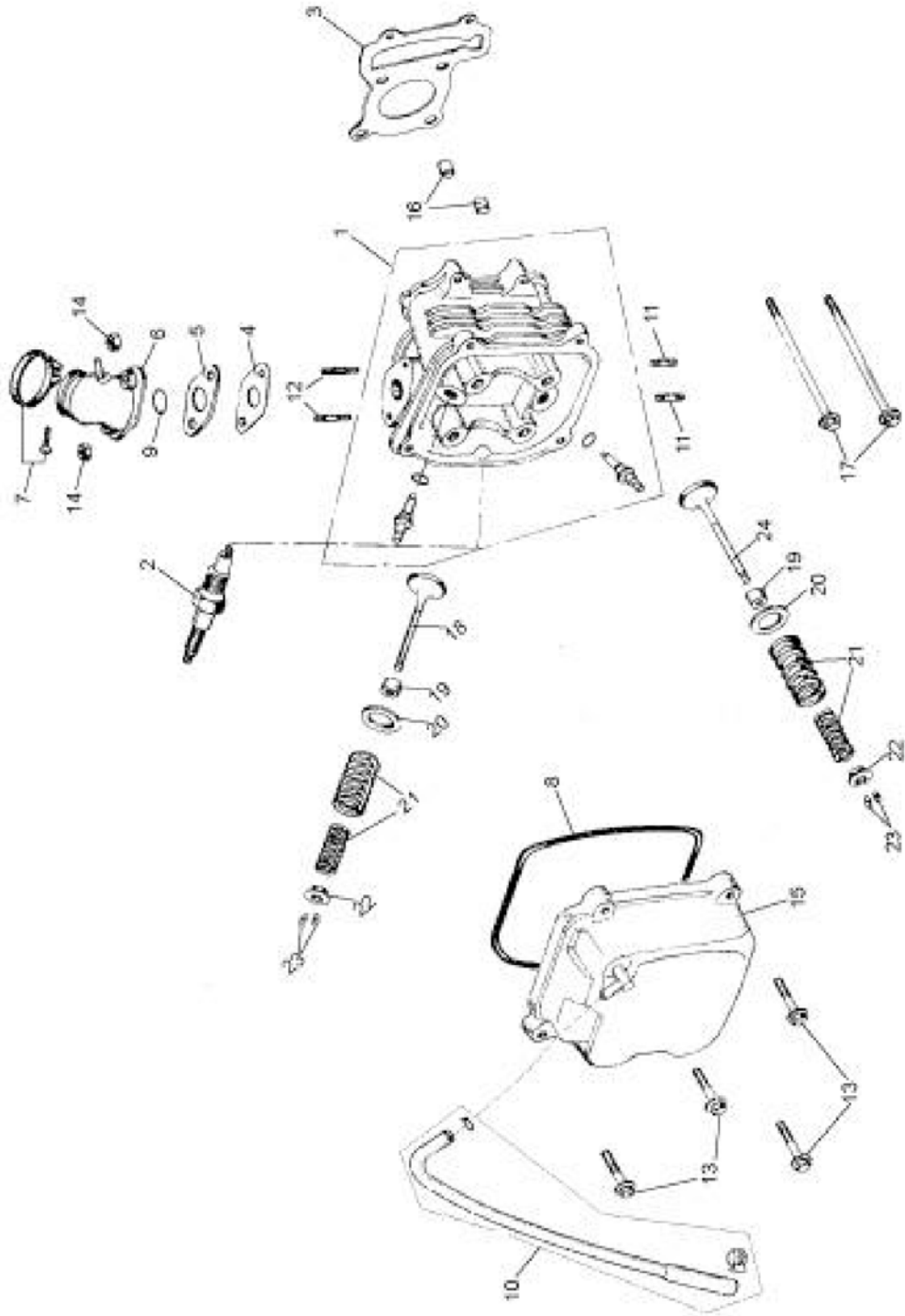
A: adjust **C:** clean **I:** inspect, clean or replace if necessary. **L:** lubricate **R:** replace

WIRING DIAGRAM



PARTS MANUAL

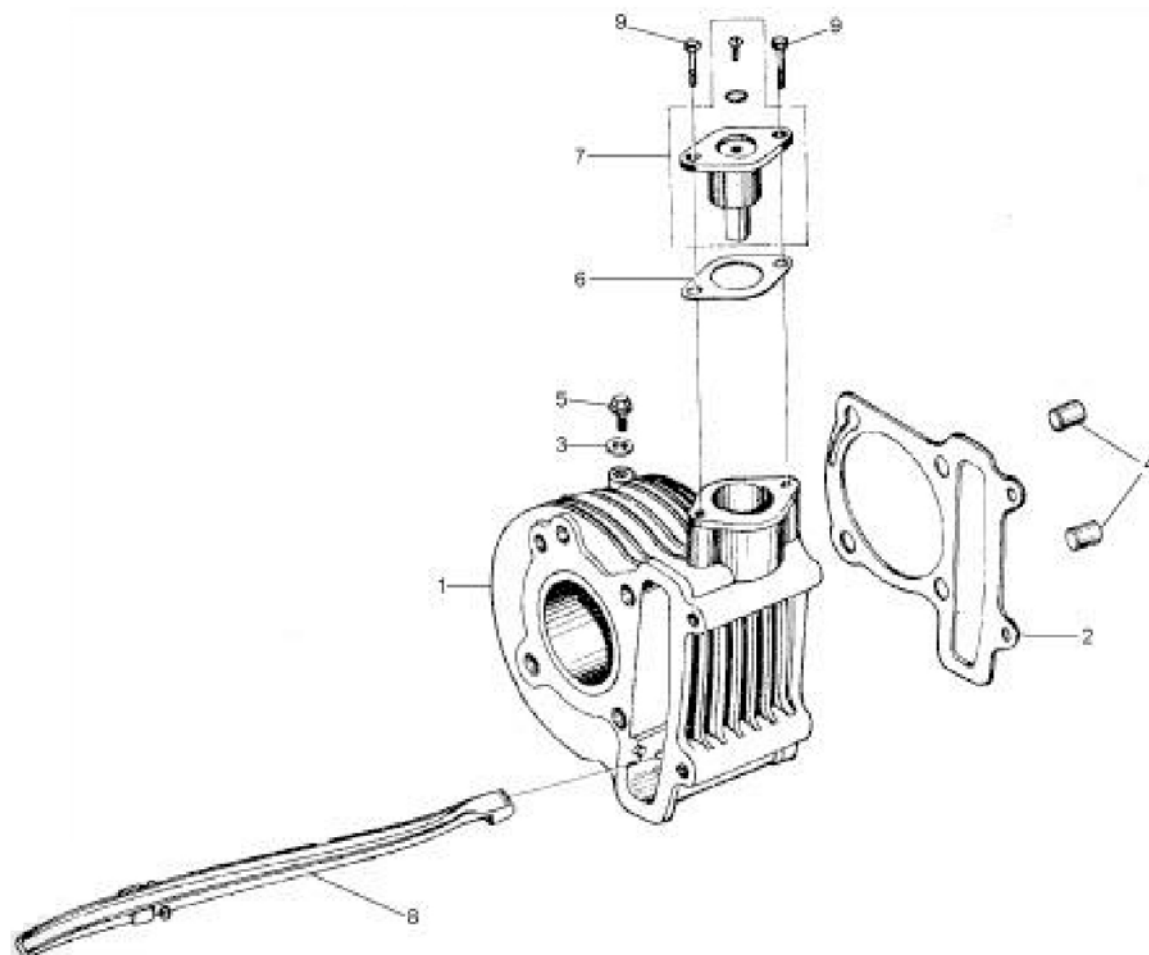
1 CYLINDER HEAD ASSY.



1 CYLINDER HEAD ASSY.

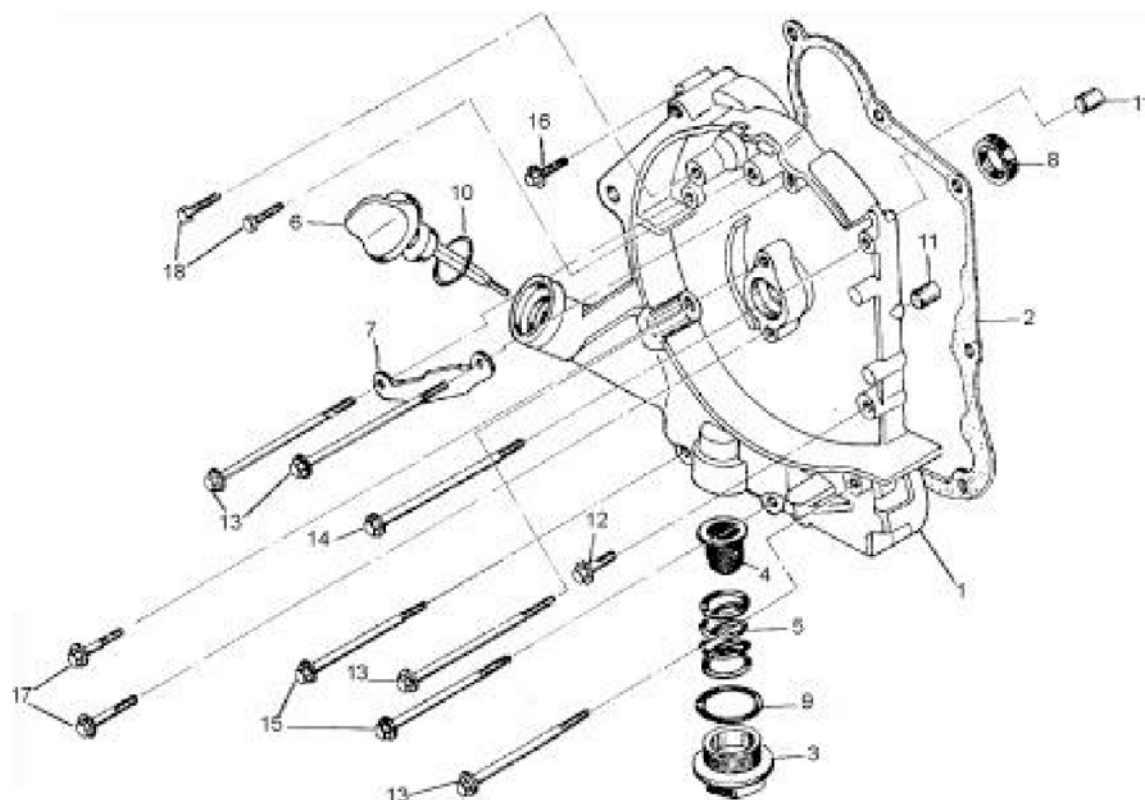
[illegible]

2 CYLINDER ASSY



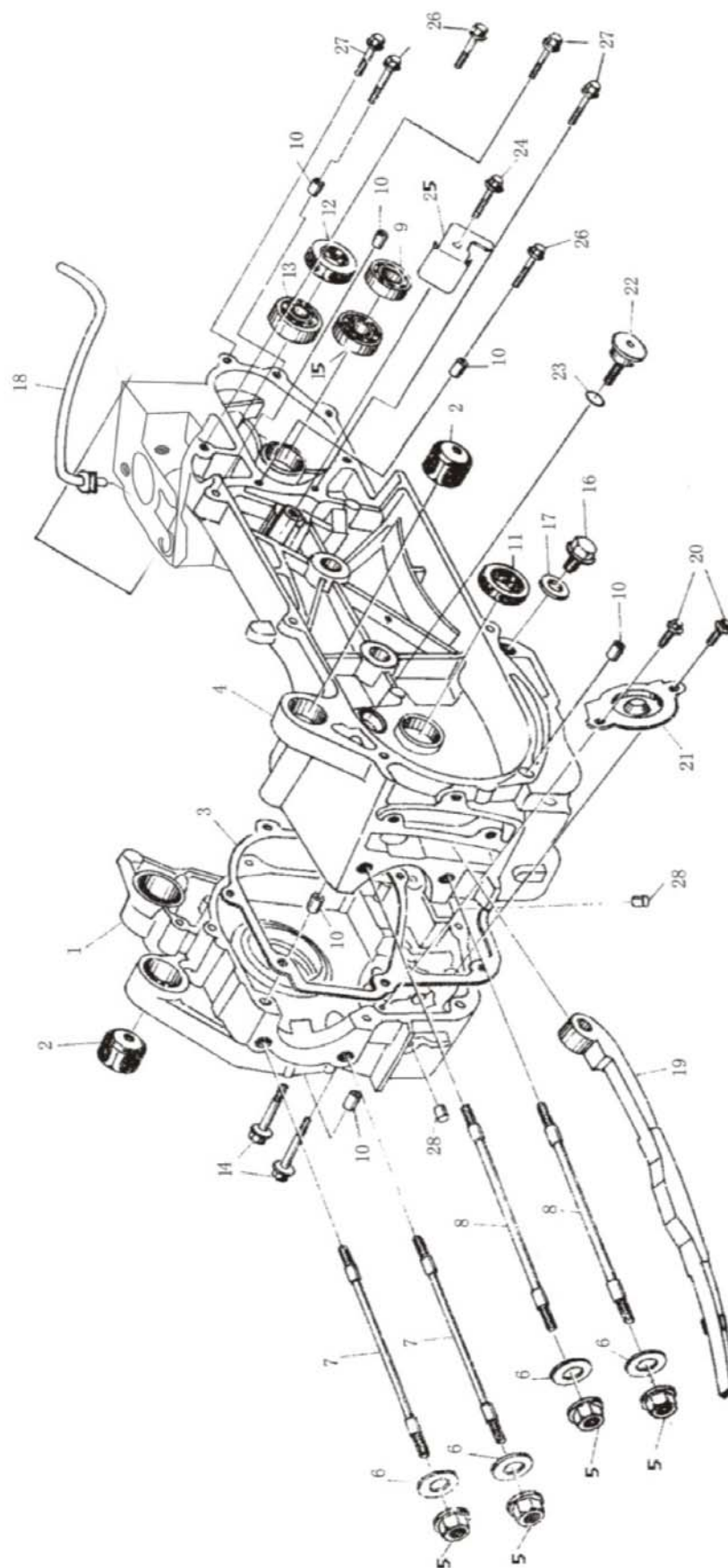
NO.	PART NO.	DESCRIPTION	Q'TY
1	GY150-302-0053	CYLINDER COMP.	1
2	GY150-302-11-0054	GASKET CYLINDER .	1
3	GY150-302-17-0055	WASHER SEALING 6	1
4	GY150-302-14-0056	PIN DOWEL 10×16	2
5	GY150-302-17-0057	BOLT FLANGE M6×12-ZN.D	1
6	GY150-302-11-0058	GASKET TENSIONET LIFTER	1
7	GY150-302-12-0059	LIFTER ASSY.TENSIONER	1
8	GY150-302-10-0060	GUIDE COMP.CAM CHAIN	1
9	GY150-302-17-0061	BOLT FLANGE 6×20	2

3 CRANKCASE ASSY.(1)



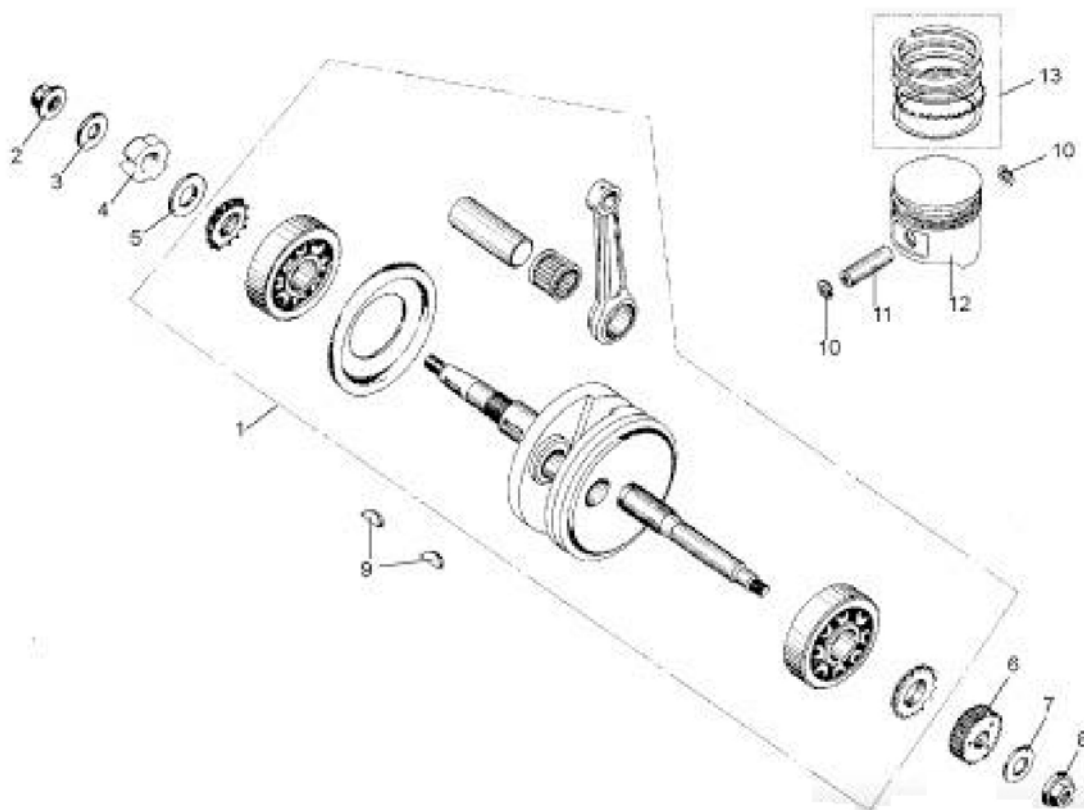
NO.	PART NO.	DESCRIPTION	Q'TY
1	GY150-301-0062	COVER RCRANKCASE COMP	1
2	GY150-301-11-0063	CRANKCASE COVER GASKET	1
3	GY150-301-0064	CAP TAPPET ADJUSTING HOLE	1
4	GY150-301-0065	SCREEN OIL FILTING	1
5	GY150-301-0066	SPRING OIL FILTING SCREEN	1
6	GY150-301-13-0067	GAUGE OIL LEVEL	1
7	GY150-301-14-0068	CLAMPER AC GENERATOR CORD	1
8	GY150-301-11-0069	OIL SEAL 19.8×30×5	1
9	GY150-301-11-0070	O-RING 30.8×3	1
10	GY150-301-11-0071	O-RING 18×3	1
11	GY150-301-14-0072	PIN DOWEL 8×14	2
12	GY150-301-17-0073	BOLT FLANGE M6×28	1
13	GY150-301-17-0074	BOLT FLANGE M6×95	4
14	GY150-301-17-0075	BOLT FLANGE M6×100	1
15	GY150-301-17-0076	BOLT FLANGE M6×110	2
16	GY150-301-17-0077	BOLT FLANGE M6×35	1
17	GY150-301-17-0078	BOLT FLANGE M6×20	2
18	GY150-301-17-0079	BOLT HEX M5×12-ZN.D	2

4 CRANKCASE ASSY.(2)



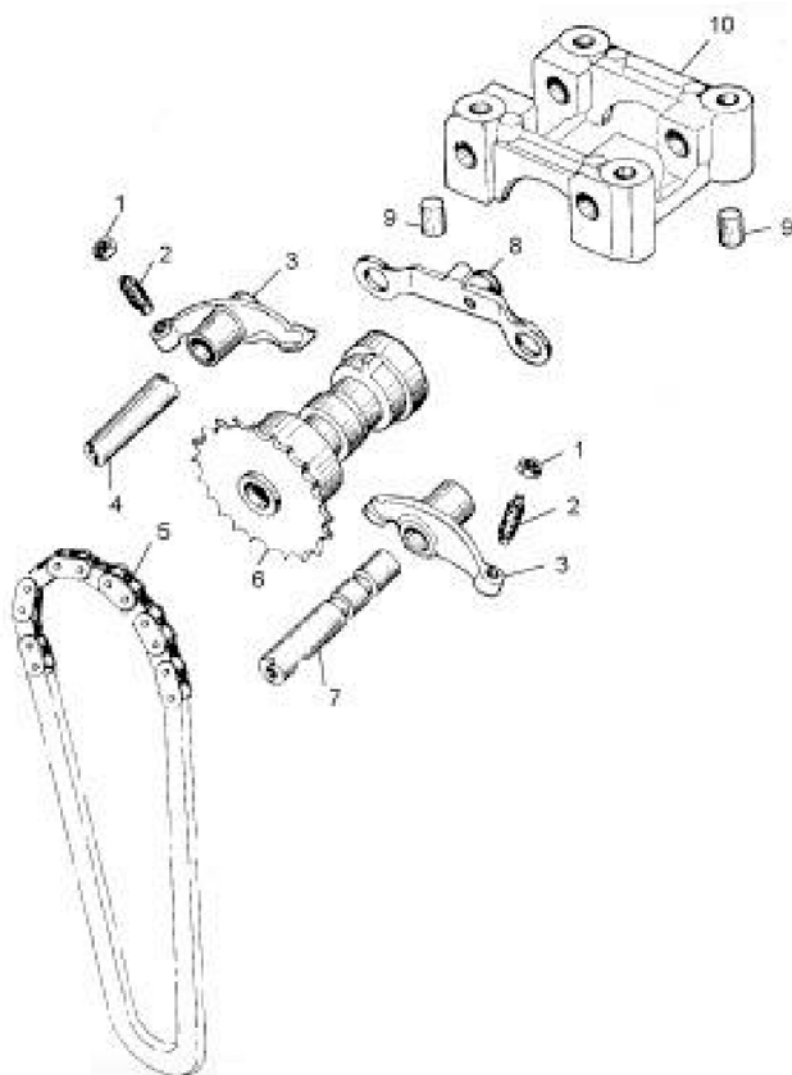
4 CRANKCASE ASSY.(2)

5 CRANKSHAFT CON'ROD&PISTON ASSY



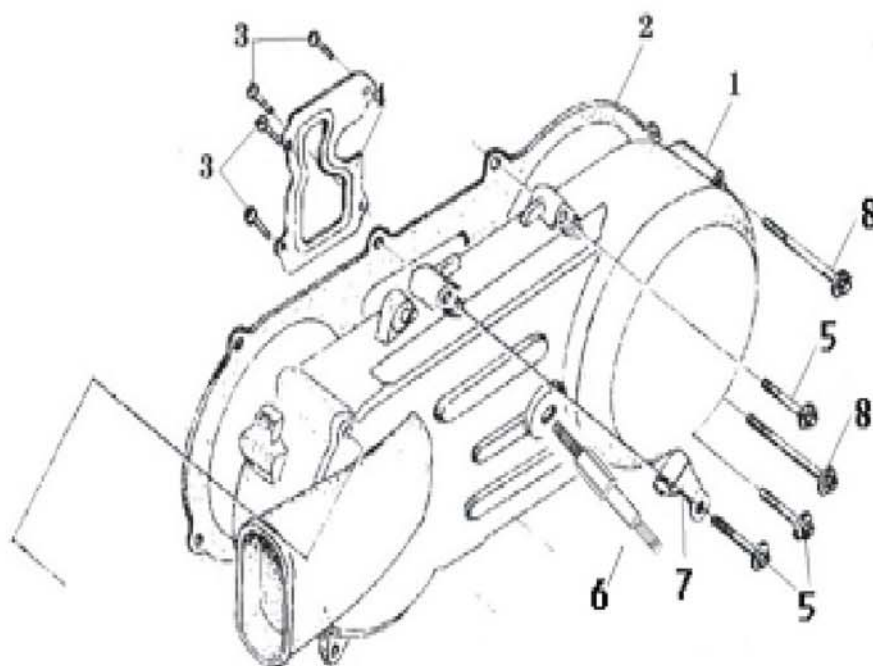
NO.	PART NO.	DESCRIPTION	Q'TY
1	GY150-305-0080	CRANKSHAFT&CONROD ASSY	1
2	GY150-305-17-0081	NUT M12×1.25	1
3	GY150-305-17-0082	WASHER 12-149HV 12-140HV	1
4	GY150-305-17-0083	NUT LOCKING	1
5	GY150-305-17-0084	WASHER	1
6	GY150-305-07-0085	GEAR KICK DRIVE	1
7	GY150-305-17-0086	WASHER Φ 12	1
8	GY150-305-17-0087	NUT M12	1
9	GY150-305-17-0088	KEY WOODRUFF	2
10	GY150-305-06-0089	CLIP PISTON PIN	2
11	GY150-305-06-0090	PIN PISTON	1
12	GY150-305-06-0091	PISTON	1
13	GY150-305-06-0092	PISTON PING SET	1

6 CAMSHAFT ASSY.



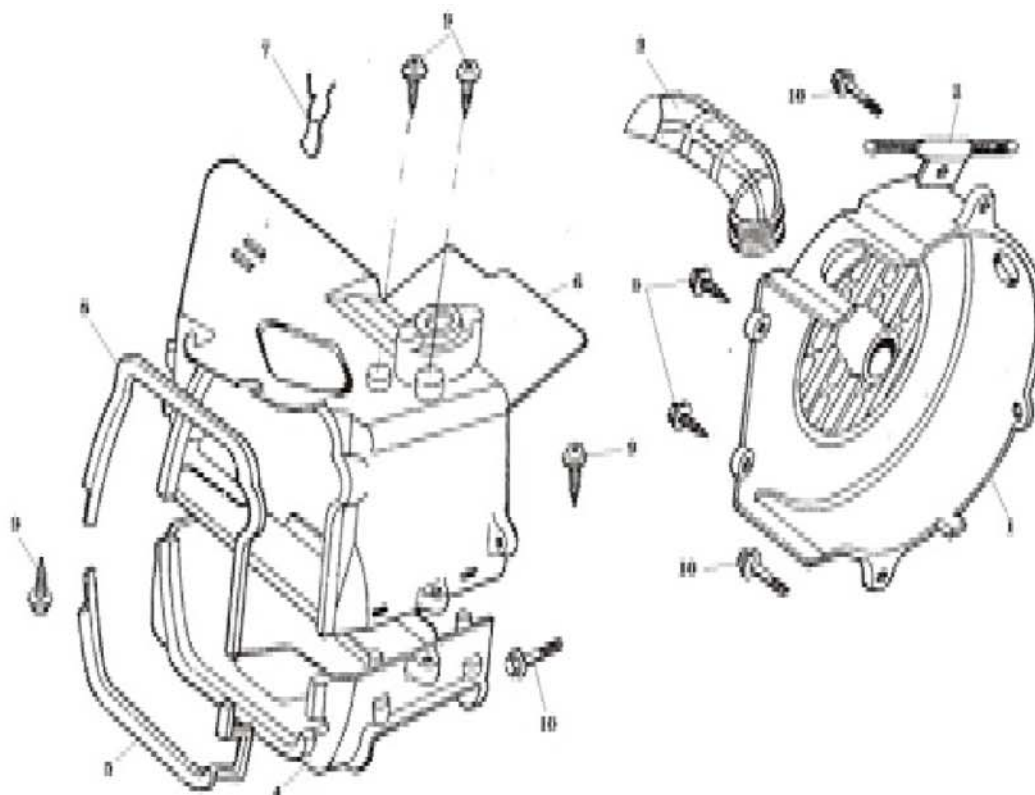
NO.	PART NO.	DESCRIPTION	Q'TY
1	GY150-316-17-0093	NUT TAPPET ADJUSTING	2
2	GY150-316-17-0094	SCREW TAPPET ADJUSTING	2
3	GY150-316-0095	ARM VALVE ROCKER	2
4	GY150-316-0096	SHAFT EX ROCKER ARM	1
5	GY150-307-0097	CHAIN CAM SHAFT	1
6	GY150-307-0098	CAM SHAFT COMP 16T	1
7	GY150-316-0099	SHAFT COMP IN ROCK ARM	1
8	GY150-316-0100	PLATE COMP STOPPER	1
9	GY150-314-0101	PIN DOWEL10×16	2
10	GY150-316-0102	HOLDER CAMSHAFT	1

7 LEFT COVER ASSY.



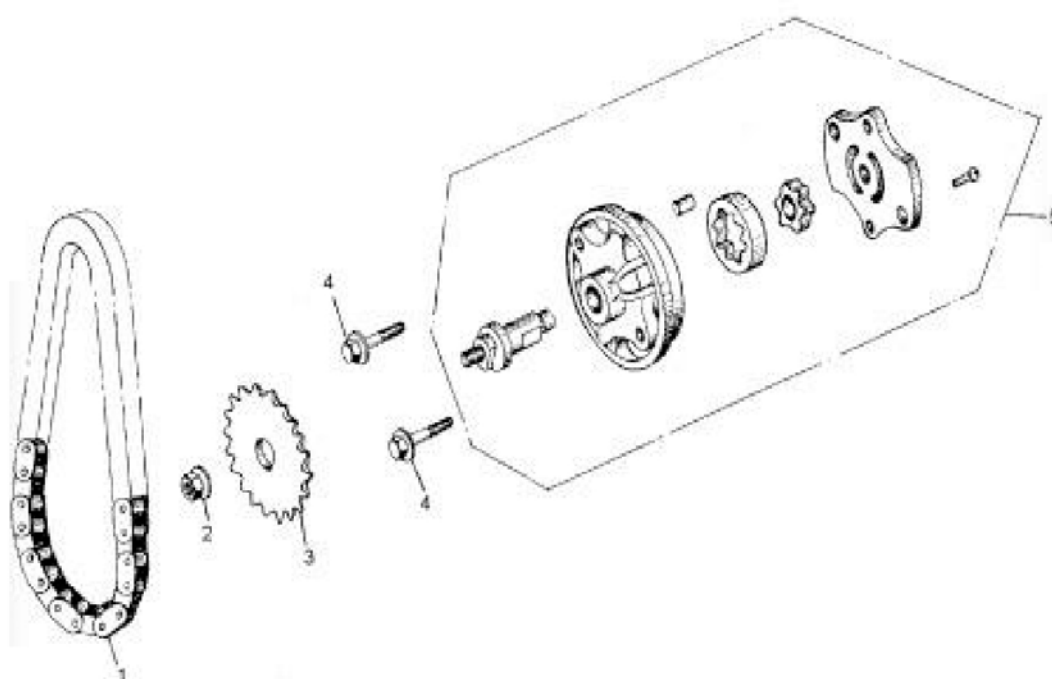
NO.	PART NO.	DESCRIPTION	Q'TY
1	GY150-301-0103	COVERL	1
2	GY150-301-11-0104	GASKET LCOVER	1
3	GY150-301-17-0105	SCREW TAPPING ST4.2×8-F-H	4
4	GY150-301-14-0106	PLATE LCOVER	1
5	GY150-301-14-0107	CLAMPER THROTTLE CABLE	1
6	GY150-301-17-0108	BOLT FLANGE M6×40	6
7	GY150-301-14-0109	CLAMPER BREATHER DRAIN TUBE	1
8	GY150-301-17-0110	BOLT FLANGE M6×12	1
9	GY150-301-14-0111	STOP PLATE	1
10	GY150-301-14-0112	CLAMPER BRAKE CABLE	1
11	GY150-301-17-0113	BOLT FLANGE M6×65	2
12	GY150-301-17-0114	PEDAL KICK STARTER ASSY.	1

8 FAN COVER AND SHROUD ASSY.



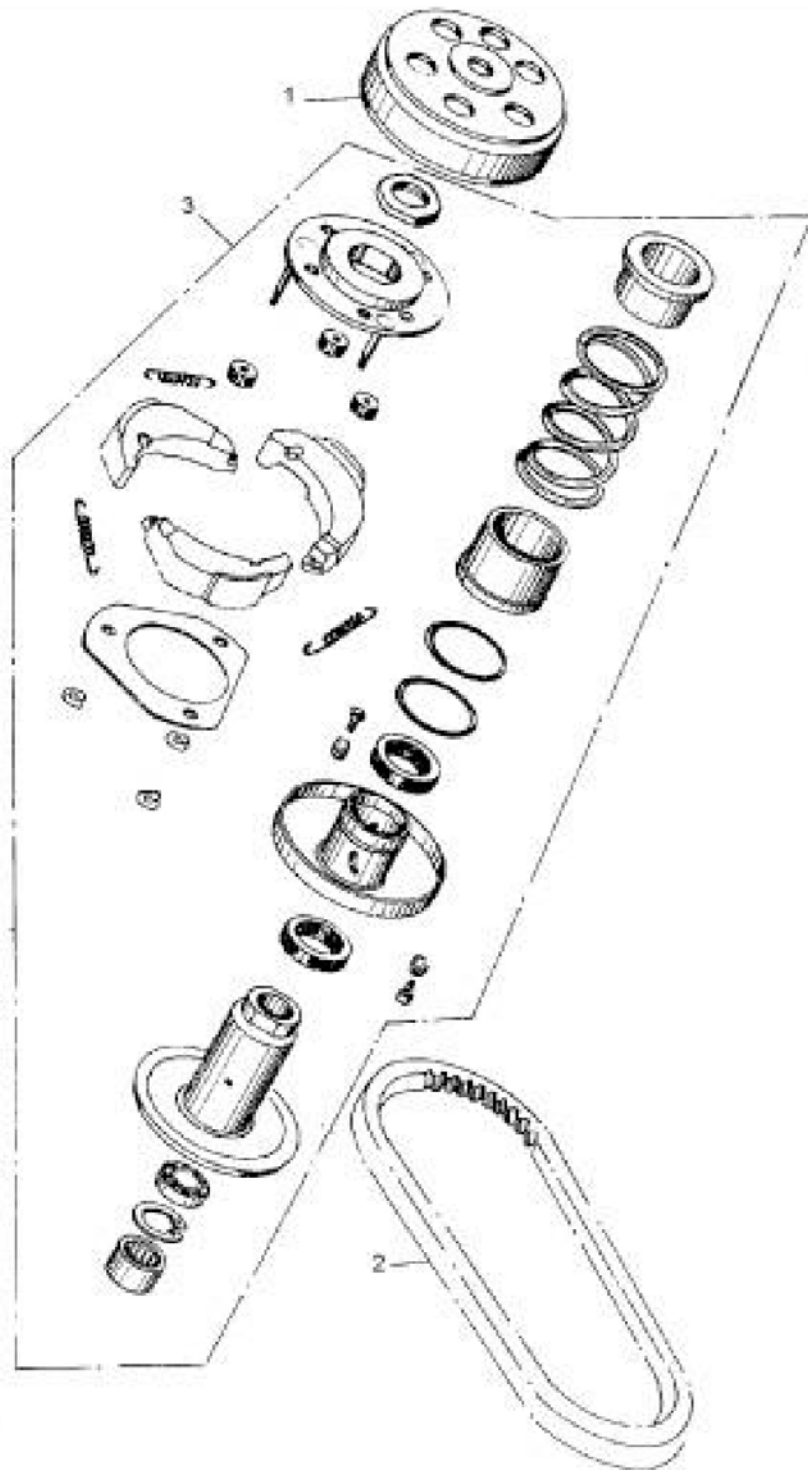
NO.	PART NO.	DESCRIPTION	Q'TY
1	GY150-313-0112	FAN COVER COMP	1
2	GY150-314-0113	STARTER CABLE CLAMPER	1
3	GY150-313-0114	CARBURETOR COOLING DUCT	1
4	GY150-313-0115	LOWER SHROUD	1
5	GY150-310-0116	LOWER SHROUD SEAL	1
6	GY150-313-0117	UPPER SHROUD COMP	1
7	GY150-313-0118	HIGH TENSION CORD CLIP	1
8	GY150-310-0119	UPPER SHROUD SEAL	1
9	GY150-317-0120	SCREW ST 4.8×16-F	6
10	GY150-317-0121	BOLT M6×25	3

9 OIL PUMP ASSY.



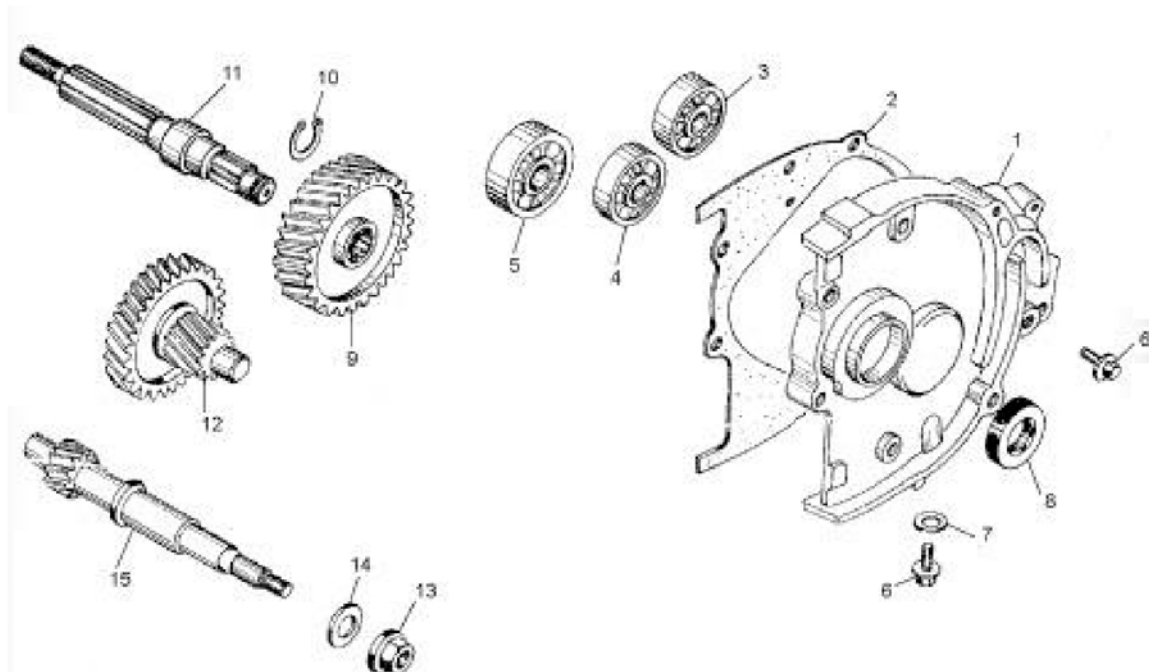
NO.	PART NO.	DESCRIPTION	Q'TY
1	GY150-307-0122	CHAIN OIL PUMP	1
2	GY150-307-0123	NUT FLANGE M6	1
3	GY150-307-0124	SPROCKET OIL PUMP ORIVEN	1
4	GY150-317-0125	BOLT M6×25	2
5	GY150-312-0126	OIL PUMP SUB ASSY	1

10 DRIVEN PULLEY AND CLUTCH SUBASSY.



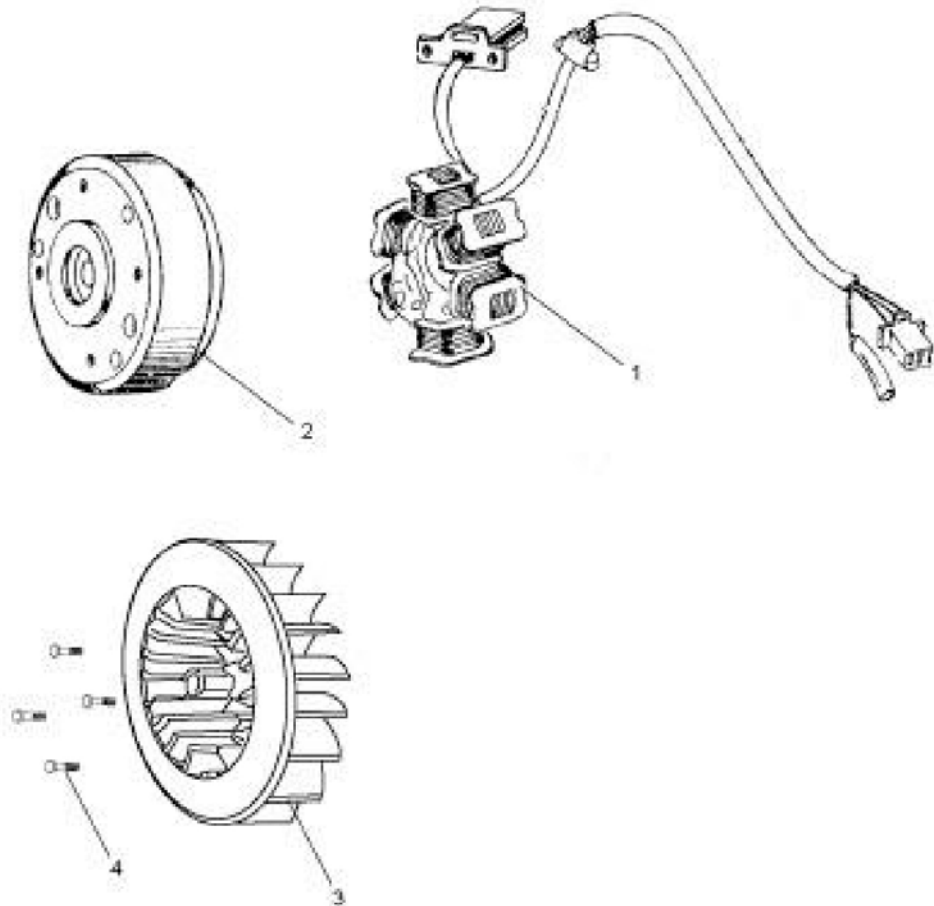
NO.	PART NO.	DESCRIPTION	Q'TY
1	GY150-312-0137	OUTER CLUTCH ASSY.	1
2	GY150-310-0138	BELT DRIVE	1
3	GY150-312-0139	PULLEY ASSY DRIVEN	1

11 TRANSMISSION ASSY.



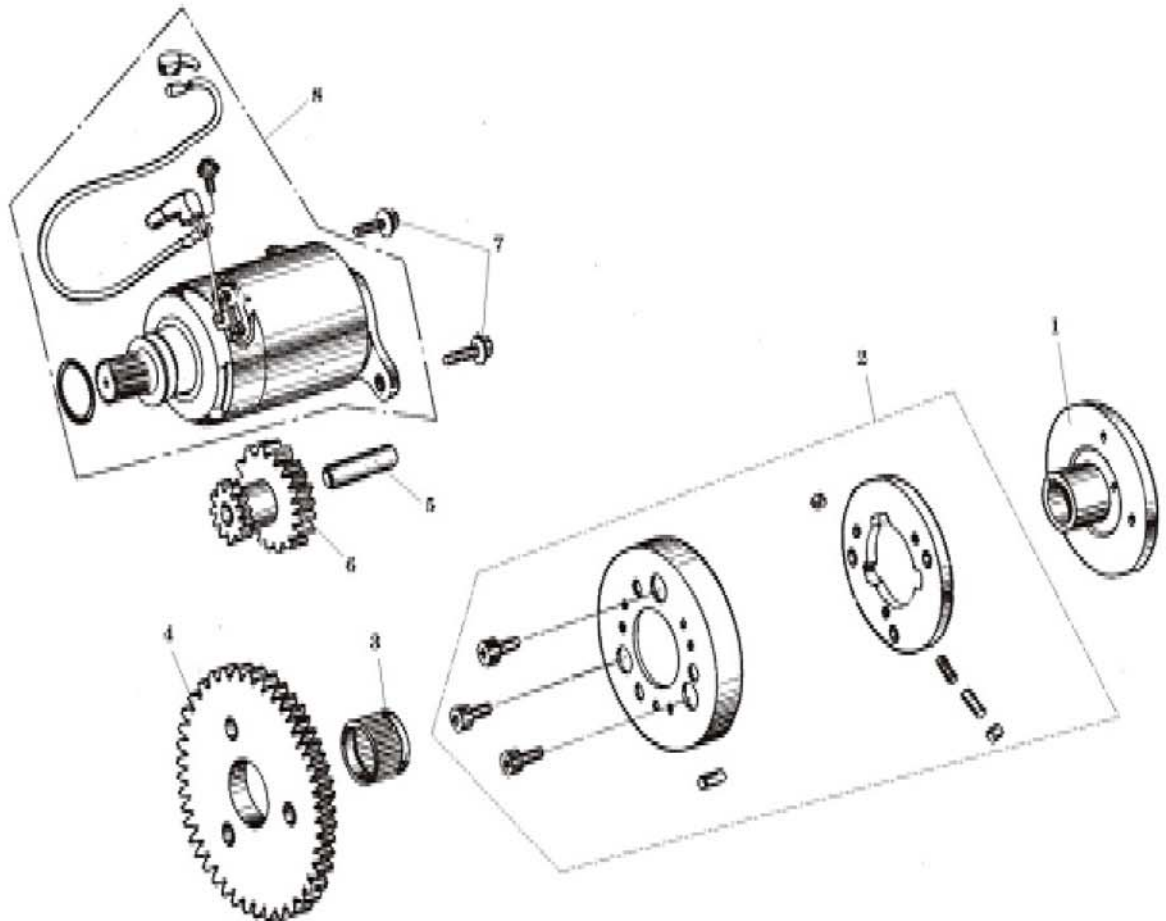
NO.	PART NO.	DESCRIPTION	Q'TY
1	GY150-301-0140	COVER TRANSMISSION	1
2	GY150-301-11-0141	GASKET TRANSMISSION COVER	1
3	GY150-301-07-0142	BEARING RADIAL BALL E6203	1
4	GY150-301-07-0143	BEARING RADIAL BALL E6202	1
5	GY150-301-07-0144	BEARING RADIAL BALL E6204	1
6	GY150-301-17-0145	BOLT SPECIAL M8×12	2
7	GY150-301-17-0146	WASHER Φ 8	1
8	GY150-301-17-0147	OIL SEAL 20×32×6	1
9	GY150-301-07-0148	GEAR FINAL	1
10	GY150-301-14-0149	CIRCLIP EXTERNAL 20	1
11	GY150-301-07-0150	SHAFT FINAL	1
12	GY150-301-07-0151	SHAFT COMP. COUNTER	1
13	GY150-301-07-0152	NUT COMPRESSOR FLANGE M12	1
14	GY150-301-17-0153	WASHER Φ 12	1
15	GY150-301-07-0154	SHAFT DRIVE	1

12 ELECTRIC SYSTEM



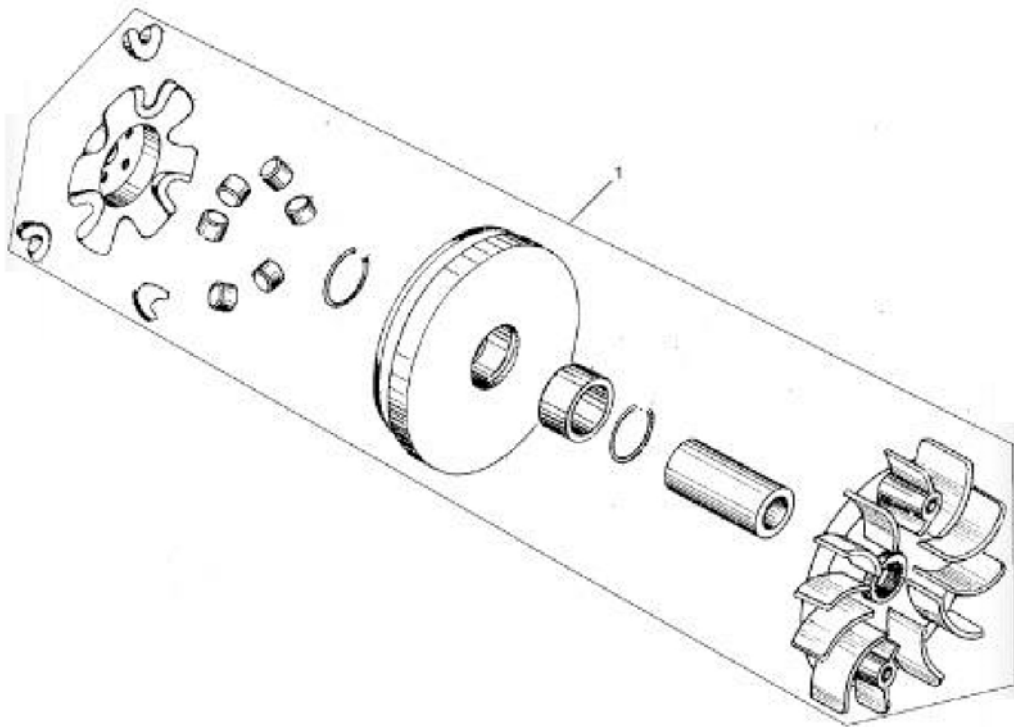
NO.	PART NO.	DESCRIPTION	Q'TY
1	GY150-312-15-0135	STATOR COMP	1
2	GY150-312-15-0136	FLYWHEEL COMP	1
3	GY150-312-15-0137	COOLING FAN COMP	1
4	GY150-312-15-0138	FLANGE BOLT M6×18	4

13 ELECTRIC STARTER ASSY.



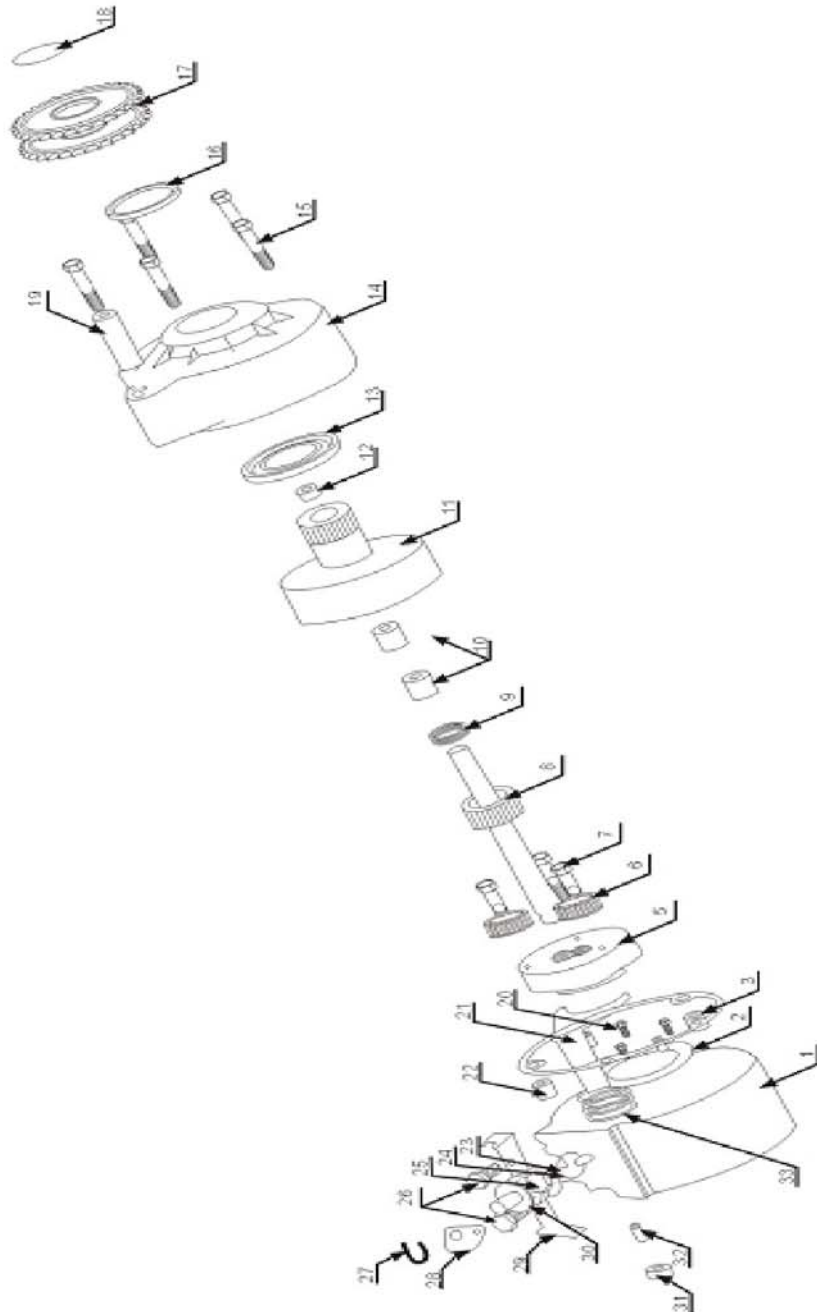
NO.	PART NO.	DESCRIPTION	Q'TY
1	GY150-312-0127	FLANGE STARTING CLUTCH	1
2	GY150-312-0128	OUTER COMP. STARTING CLUTCH ASSY.	1
3	GY150-307-0129	BEARING NEEDLE 28×32×17	1
4	GY150-312-0130	GEAR COMP. STARTING CLUTCH	1
5	GY150-307-0131	SHAFT STARTER REDUCTION GEAR	1
6	GY150-307-0132	GEAR STARTER REDUCTION	1
7	GY150-317-0133	BOLT FLANGE M6×16	2
8	GY150-312-0134	MOTOR ASSY. STARTER	1

14 DRIVE PULLEY SUBASSY.



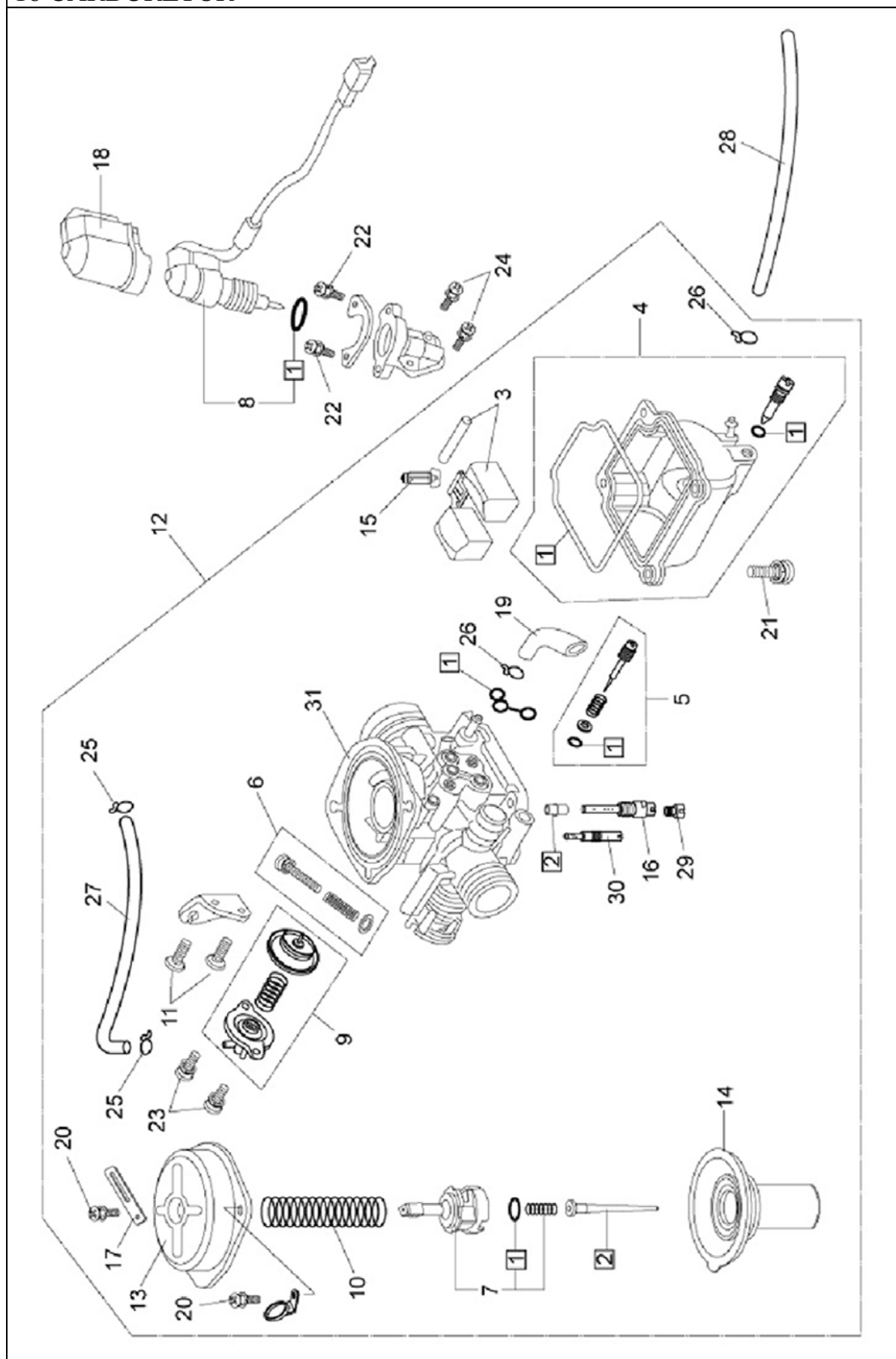
NO.	PART NO.	DESCRIPTION	Q'TY
1	GY150-312-0155	PULLEY ASSY MOVABLE DRIVE .	1
2			
3			

15 GOMP.OF GY REVER SE GEAR ENGINE



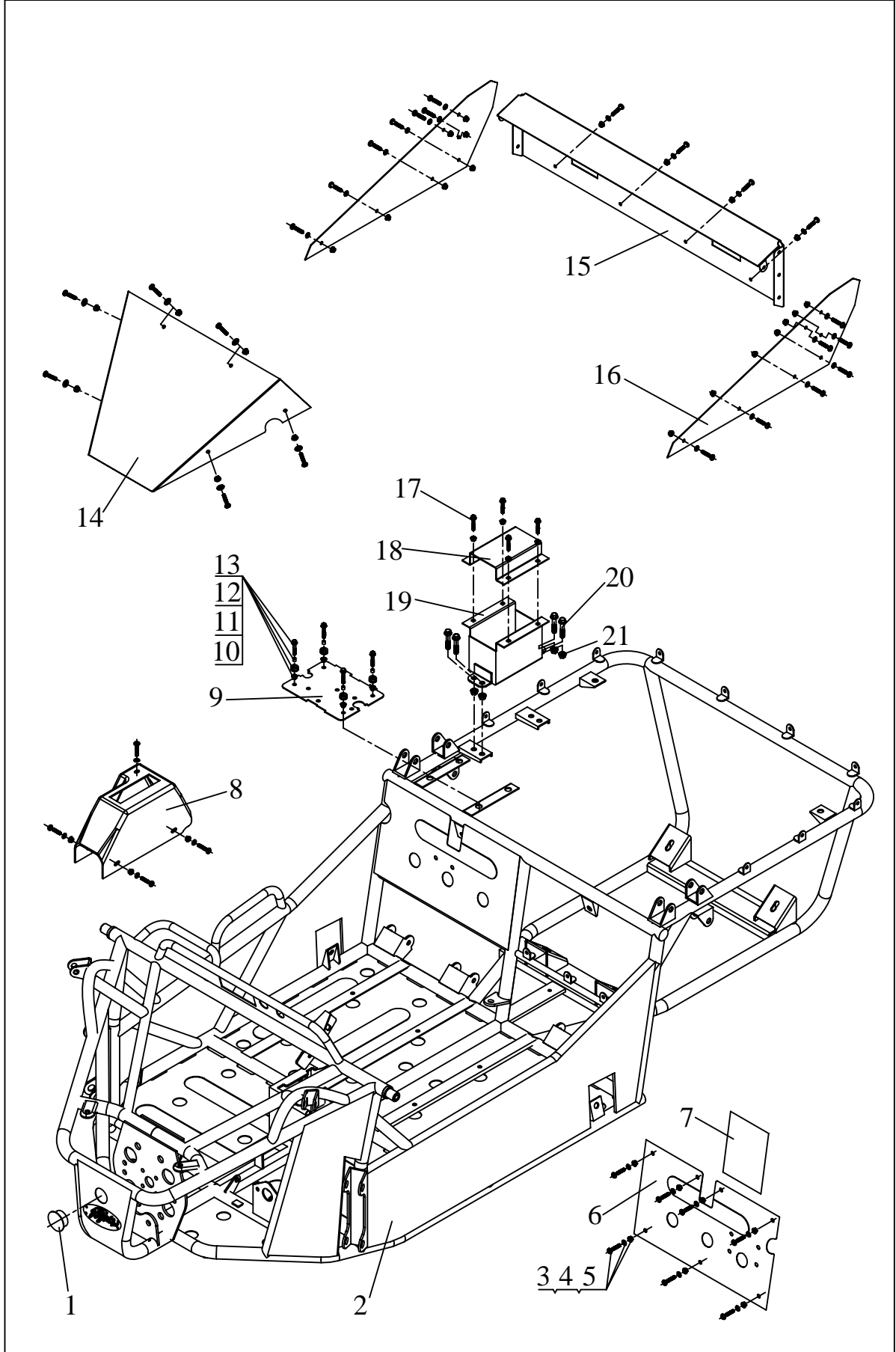
15 GOMP.OF GY REVER SE GEAR ENGINE			
NO.	PART NO.	DESCRIPTION	Q'TY
1	GY150-401-0156	REVERSE GEAR PART OF CASE BODY	1
2	GY150-401-0157	RING GEAR OF REVERSE GEAR	1
3	GY150-401-0158	DOWEL PIN	2
4	GY150-401-0159	PAPER WASHER	1
5	GY150-401-0160	PLANET GEAR SEAT	1
6	GY150-401-0161	PLANET GEAR	3
7	GY150-401-0162	PLANET GEAR SHAFT	3
8	GY150-401-0163	OUTPUT SHAFT	1
9	GY150-401-0164	THRUST BEARING	1
10	GY150-401-0165	NEEDLE BEARING	2
11	GY150-401-0166	RING GEAR OF POSITIVE AND NEGATIVE ROTATION	1
12	GY150-401-0167	CHOKE PLUG	1
13	GY150-401-0168	BEARING	2
14	GY150-401-0169	SHELL OF REVERSE GEAR	1
15	GY150-401-0170	M10 COUPLING SCREW	5
16	GY150-401-0171	OIL SEAL	1
17	GY150-401-0172	SPROCKET WHEEL,DOUBLE ROW	1
18	GY150-401-0173	CIRCLIP	1
19	GY150-401-0174	BUSH ABSORBER	1
20	GY150-401-0175	SCREW COUNTERSUNK HEAD	4
21	GY150-401-0176	SHIFTING YOKE	1
22	GY150-401-0177	HOLLOW DOWEL PIN	2
23	GY150-401-0178	M8 SETSCREW	1
24	GY150-401-0179	O-RING	1
25	GY150-401-0180	M8 LICK NUT	1
26	GY150-401-0181	M6 COUPLING SCREW	2
27	GY150-401-0182	SPLIT CIRCLIP	1
28	GY150-401-0183	DRAGLINE DISC	1
29	GY150-401-0184	ADJUSTING HOLDER OF DRAGLING	1
30	GY150-401-0185	GEAR SHAFT OF GEAR SHIFT	1
31	GY150-401-0186	M6 LOCK SCREW	1
32	GY150-401-0187	M6 SETSCREW	1
33	GY150-401-0188	OMPRESSION SPRING OF SHIFTING YOK	1

16 CARBURETOR



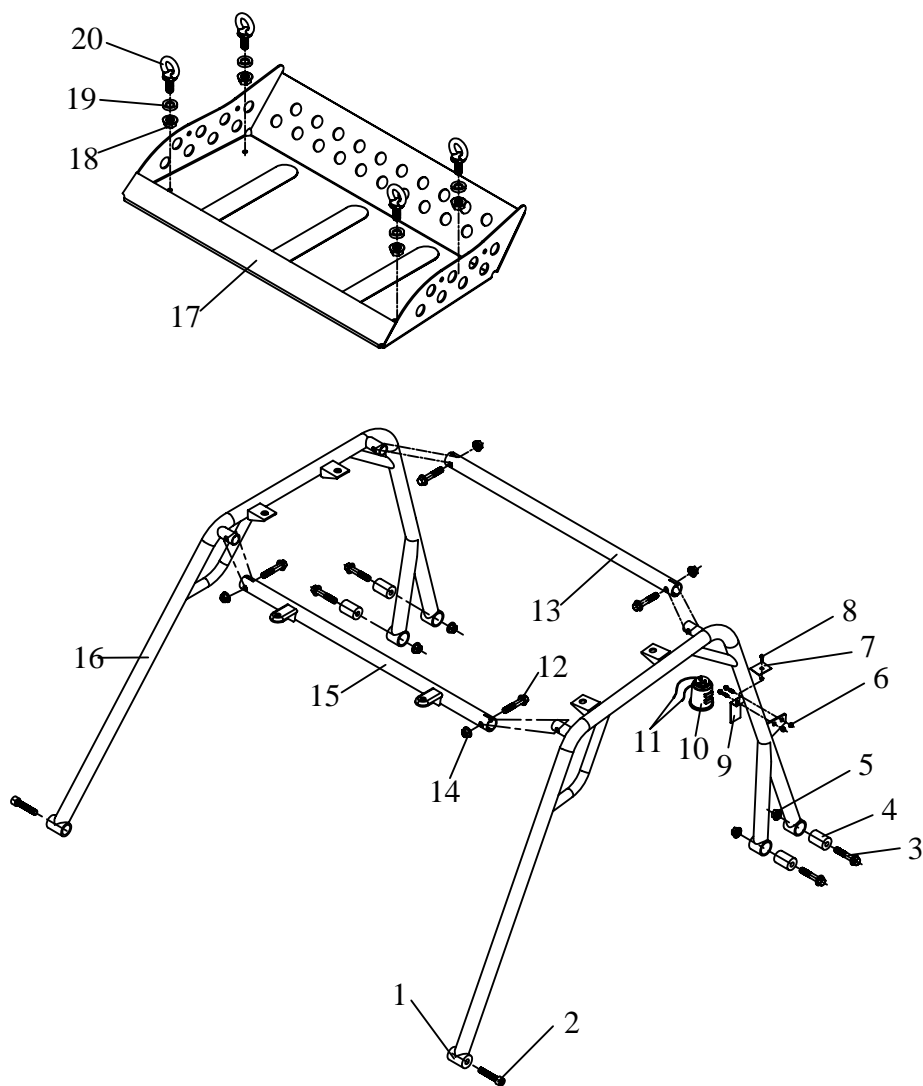
16 CARBURETOR			
1	16010-KTA-901	GASKET SET A	1
2	16012-KTA-903	JET NEEDLE SET	1
3	16013-KTA-904	FLOAT SET	1
4	16015-KTA-905	FLOAT CHAMBER SET	1
5	16016-KTA-906	SCREW SET A	1
6	16028-KTA-907	SCREW SET B	1
7	16037-KTA-908	VALVE PLATE SET	1
8	16046-KTA-909	AUTO BYSTARTER ASSY.	1
9	16048-KTA-910	AIR CUT VALVE SET	1
10	16050-KTA-911	COMPRESSION COIL SPRING	1
11	16080-KJ9-003	PAN SCREW M5×12	1
12	16100-KTA-913	CARBURETOR ASSY.	1
13	16107-KTA-914	TOP	2
14	16111-KTA-915	VACUUM PISTON COMP.	1
15	16155-KTA-902	FLOAT VALVE COMP.	1
16	16165-KTA-916	NEEDLE JET HOLDER	1
17	16179-KAB-670	BINDER	1
18	16190-GJ2-004	HOLDER CAP.	1
19	95005-45270-50	TUBE	1
20	93500-04008	PAN SCREW M4×8	1
21	93500-04014-1H	PAN SCREW M4×14	2
22	93892-04008-18	SCREW-WASHER M4×8	4
23	93892-04010-18	SCREW-WASHER M4×10	2
24	93892-05012-18	SCREW-WASHER M5×12	2
25	95002-02079	TUBE CLIP(B7)	2
26	95002-02089	TUBE CLIP(B8)	2
27	95005-35200-21	TUBE 3.5×210	2
28	16199-GT8-600		
29	99101-GHB-0112	MAIN JET 112#	1
30	99103-GY6-0350	SLOW JET 35#	1
31	16100-KAT-923	CARBURETOR BODY	1

17 FRAME



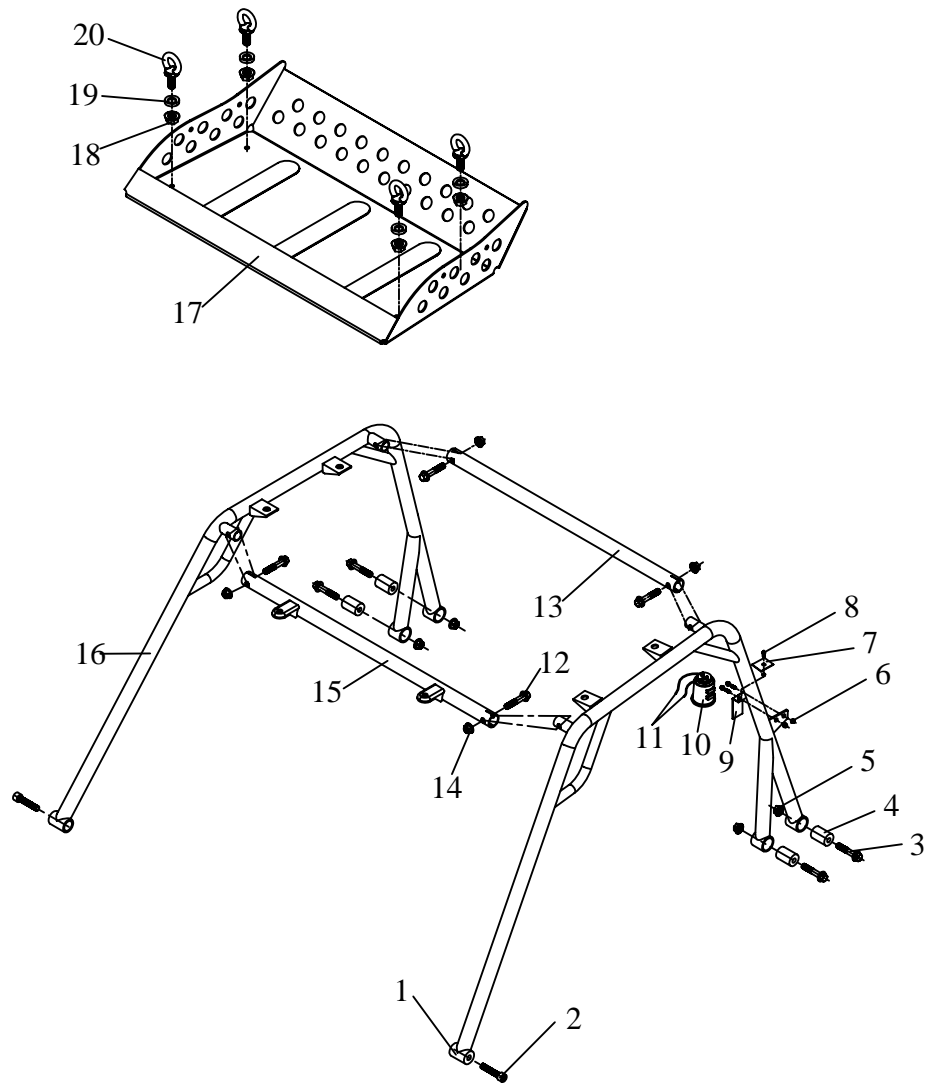
17 FRAME			
NO.	PART NO.	DESCRIPTION	Q'TY
1	HP-30	RUBBER CHOCK PLUG	1
2	DS150.01.01.00.00	MAIN FRAME	1
3	GB/T818-2000 M6X16	CROSS PANHEAD SCREW M6X16	35
4	JD0900008	RUBBER GASKET Ø6	35
5	GB/T6187-2000 M6	SELF-LOCKING FLANGE NUT M6	34
6	DS150.01.01.02.30	BOARD BEHIND THE SEAT	1
7	DS150.11.01.00.01	HEAT-PROTECTING ALUMINIUM FOIL	1
8	DS150.11.16.00.00	RUBBER COVER.SHIFT	1
9	D250.01.000-210A	NETHER BOARD OF ELECTRICAL INSTALLATION	1
10	GB/T6187-2000 M8	SELF-LOCKING FLANGE NUT M8	8
11	JD1910003	RUBBER BUSH.WATER TANK	4
12	JD1910002	STEEL BUSH.WATER TANK	4
13	GB5787-86 M8X30	FLANGE BOLT M8X30	4
14	DS150.01.04.00.01	FRONT COVER	1
15	DS150.01.04.01.02	MIDDLE EMPENNAGE	1
16	DS150.01.04.01.01	SIDE EMPENNAGE	2
17	GB5787-86 M8X16	FLANGE BOLT M8X16	4
18	DS250.10.00.00.05	BATTERY BOX COVER	1
19	DS150.01.04.02.00	BATTERY BOX	1
20	GB5787-86 M10X1.25X20	FLANGE BOLT M10X1.25X20	4
21	GB/T6187-2000 M10	SELF-LOCKING FLANGE NUT M10	4
22			
23			
24			
25			
26			
27			
28			
29			
30			
31			
32			
33			
34			
35			
36			
37			
38			
39			
40			
41			
42			
43			
44			
45			
46			

18 PROTECTIVE BAR



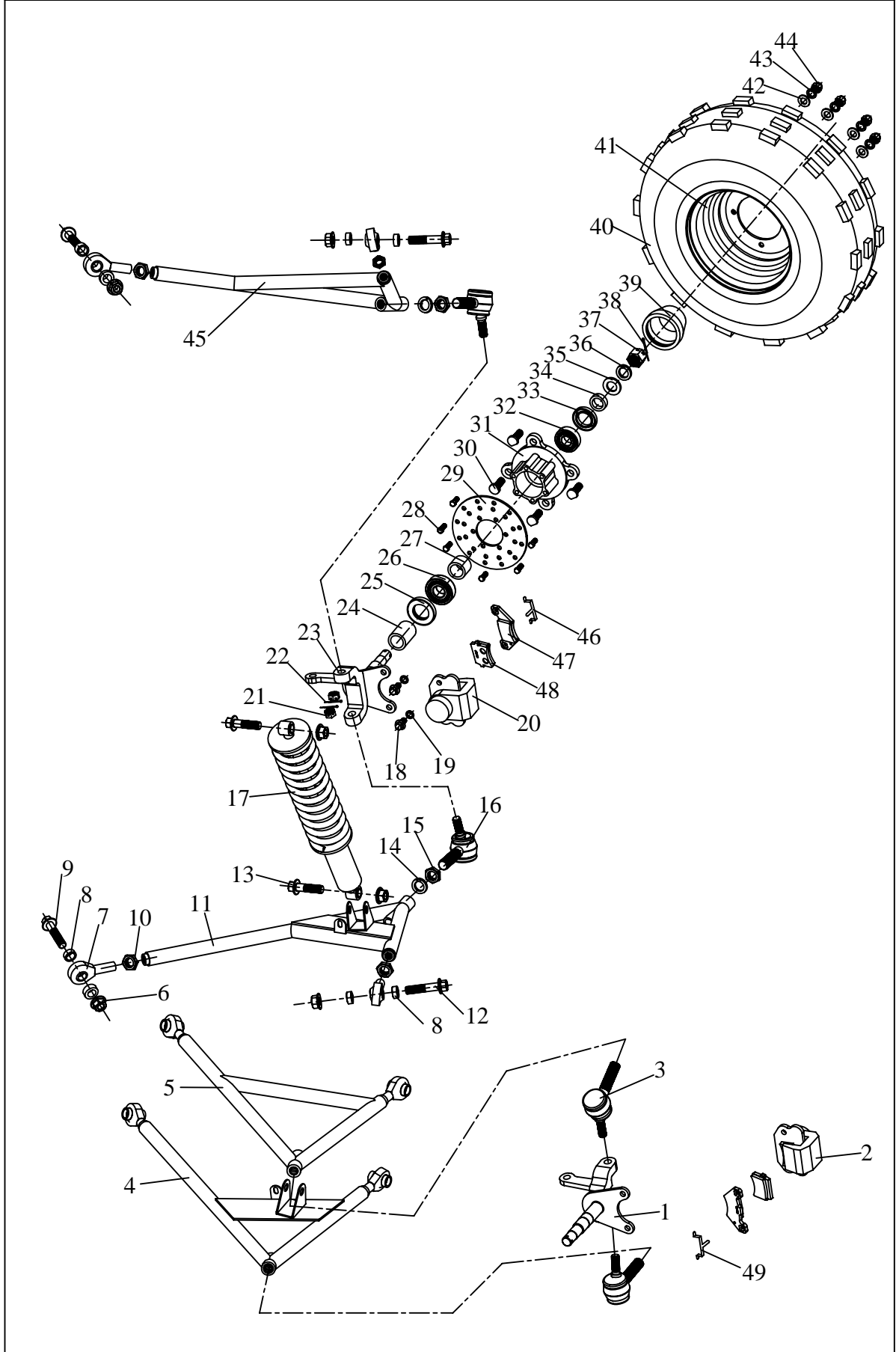
NO.	PART NO.	DESCRIPTION	Q'TY
1	DS150.01.02.01.00	LEFT PROTECTIVE BAR	1
2	GB/T70.1-2000 M10X30	INNER HEXAGON BOLT M10X30	2
3	GB5787-86 M12X1.25X60	FLANGE BOLT M12X1.25X60	4
4	D250.11.771	NYLON BUSH	4
5	GB6177.1-2000 M12	FLANGE NUT M12	4
6	GB/T6187-2000 M6	SELF-LOCKING FLANGE NUT M6	3
7	D650.04.06.00.02	LIMITED PLATE OF CARBON FILTER	1
8	GB5787-86 M6X20	FLANGE BOLT M6X20	3
9	D650.04.06.00.01	CARBON FILTER BRACKET	1
10	DS150.05.02.03.00	CARBON FILTER	1
11	DS150.05.02.00.01	Ø4 FLEXIBLE FUEL PIPE	2
12	GB5787-86 M10X1.25X35	FLANGE BOLT M10X1.25X35	4
13	DS150.01.02.04.01	REAR PROTECTIVE BAR	1

18 PROTECTIVE BAR



NO.	PART NO.	DESCRIPTION	Q'TY
14	GB6177.1-2000 M10	FLANGE NUT M10	4
15	DS150.01.02.03.00	FRONT PROTECTIVE BAR	1
16	DS150.01.02.02.00	RIGHT PROTECTIVE BAR	1
17	DS150.01.02.02.00	OPTIONAL ALUMINUM ROOF RACK	1
18	GB/T6177-2000 M10X1.25	FLANGE NUT M10X1.25	4
19	D1600.01.02.00.07	RACK SPACER SLEEVE	4
20	D1600.08.01.00.06	LOOP M10X1.25	4
21			
22			
23			
24			
25			
26			

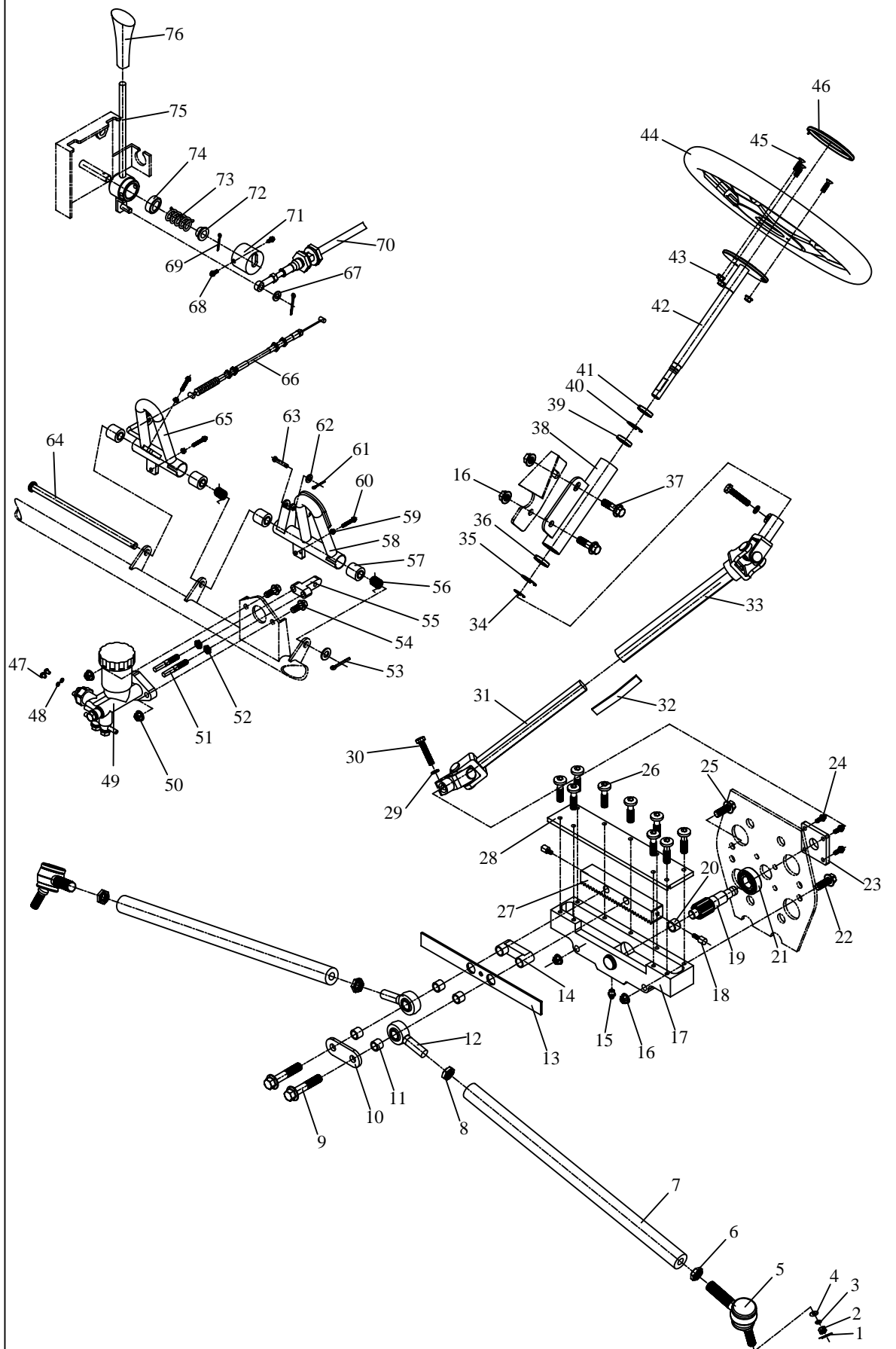
19 FRONT SUSPENSION



19 FRONT SUSPENSION			
NO.	PART NO.	DESCRIPTION	Q'TY
1	DS250.02.00.00.02	STUB AXLE.R	1
2	DN250.04.01.00.02	BRAKE CALIPER 2	1
3	DS250.02.00.00.05	UNIVERSAL JOINT.L	2
4	DS150.02.03.00.00	SUSPENSION ARM.LOWER.FL	1
5	DS150.02.02.00.00	SUSPENSION ARM.UPPER.FL	1
6	GB6177.1-2000 M12X1.5	FLANGE NUT M12X1.5	12
7	POSA12	ROD END BEARING 12	8
8	D800.05.01.00.03	SPACER SLEEVE.Ø 12	16
9	GB5787-1986 M12X1.5X65	FLANGE BOLT M12X1.5X65	4
10	GB6173-1986 M12X1.5	THIN NUT M12X1.5	8
11	DS150.02.05.00.00	SUSPENSION ARM.LOWER.FR	1
12	GB5787-1986 M12X1.5X60	FLANGE BOLT M12X1.5X60	4
13	GB5787-1986 M12X1.5X45	FLANGE BOLT M12X1.5X45	2
14	GB3632-83 16	SPRING WASHER 16	4
15	GB6172.1-2000 M16X1.75	THIN NUT M16X1.75	4
16	DS250.02.00.00.04	UNIVERSAL JOINT.R	2
17	DS150.02.01.00.00	FRONT SHOCK ABSORBER	2
18	GB5787-1986 M8X15	FLANGE BOLT M8X15	4
19	GB3632-83 8	SPRING WASHER 8	4
20	DN250.04.01.00.01	BRAKE CALIPER 1	1
21	GB/T6179-1986 M12	SLOTTED NUT M12	4
22	GB/T91-2000 2.5X30	COTTER PIN 2.5X30	4
23	DS250.02.00.00.03	STUB AXLE.L	1
24	JD0360008	BUSH 3.FRONT KNUCKLE	2
25	GB13871-1992 FB 48X28x7	GREASE SEAL FB 48X28X7	2
26	GB/T276-1994 6204	BALL BEARING 6204	2
27	JD0360007	BUSH 2.FRONT KNUCKLE	2
28	GB/T5783-2000 M6X15	BOLT M6X15	12
29	JD0360150	DISC.FRONT BRAKE	2
30	DS250.02.00.00.02	KNURLED BOLT	8
31	JD0360200-EU	HUB.FRONT WHEEL	2
32	GB/T276-1994 6203	BALL BEARING 6203	2
33	GB9877.1—88 FB 40X25X7	GREASE SEAL FB 40X25X7	2
34	JD0360006	BUSH 1.FRONT KNUCKLE	2
35	GB/T95-1985 16	PLAIN WASHER 16	2
36	GB/T93-1987 16	SPRING WASHER 16	2
37	GB/T9459-1988 M16X1.5 A	SLOTTED NUT M16X1.5	2
38	GB/T91-2000 4X40	COTTER PIN 4X40	2
39	JD0360010	HUB COVER.FRONT WHEEL	2
40	JD0760000	TIRE.FR.AT21X8-10	2
41	JD0760800	RIM.FRONT WHEEL	2
42	GB/T95-1985 10	PLAIN WASHER 10	8
43	GB/T93-1987 10	SPRING WASHER 10	8
44	GB/T923-1988 M10X1.25	CAPPED NUT M10X1.25	8
45	DS150.02.04.00.00	SUSPENSION ARM.UPPER.FR	1
46	DN250.04.01.00.05	SPRING PLATE 1.BRAKE CLIPPER	1

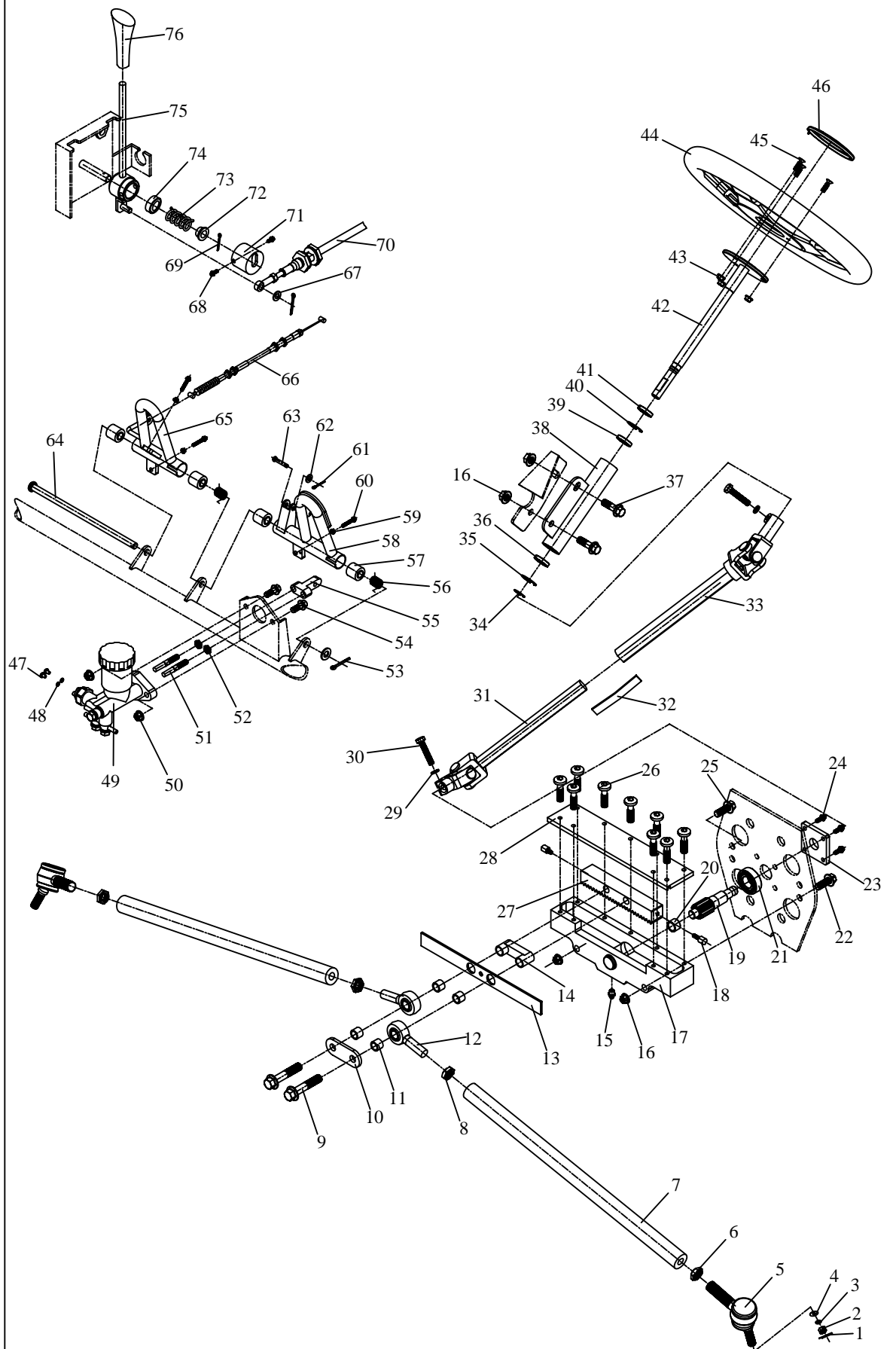
19 FRONT SUSPENSION			
NO.	PART NO.	DESCRIPTION	Q'TY
47	DN250.04.01.00.04	FRACTION PLATE 2	2
48	DN250.04.01.00.03	FRACTION PLATE 1	2
49	DN250.04.01.00.06	SPRING PLATE 2.BRAKE CLIPPER	1
50			
51			
52			
53			
54			
55			
56			
57			
58			
59			
60			
61			
62			
63			
64			
65			
66			
67			
68			
69			
70			
71			
72			
73			
74			
75			
76			
77			
78			
79			
80			
81			
82			
83			
84			
85			
86			
87			
88			
89			
90			
91			
92			

20 CONTROL SYSTEM ASSEMBLY



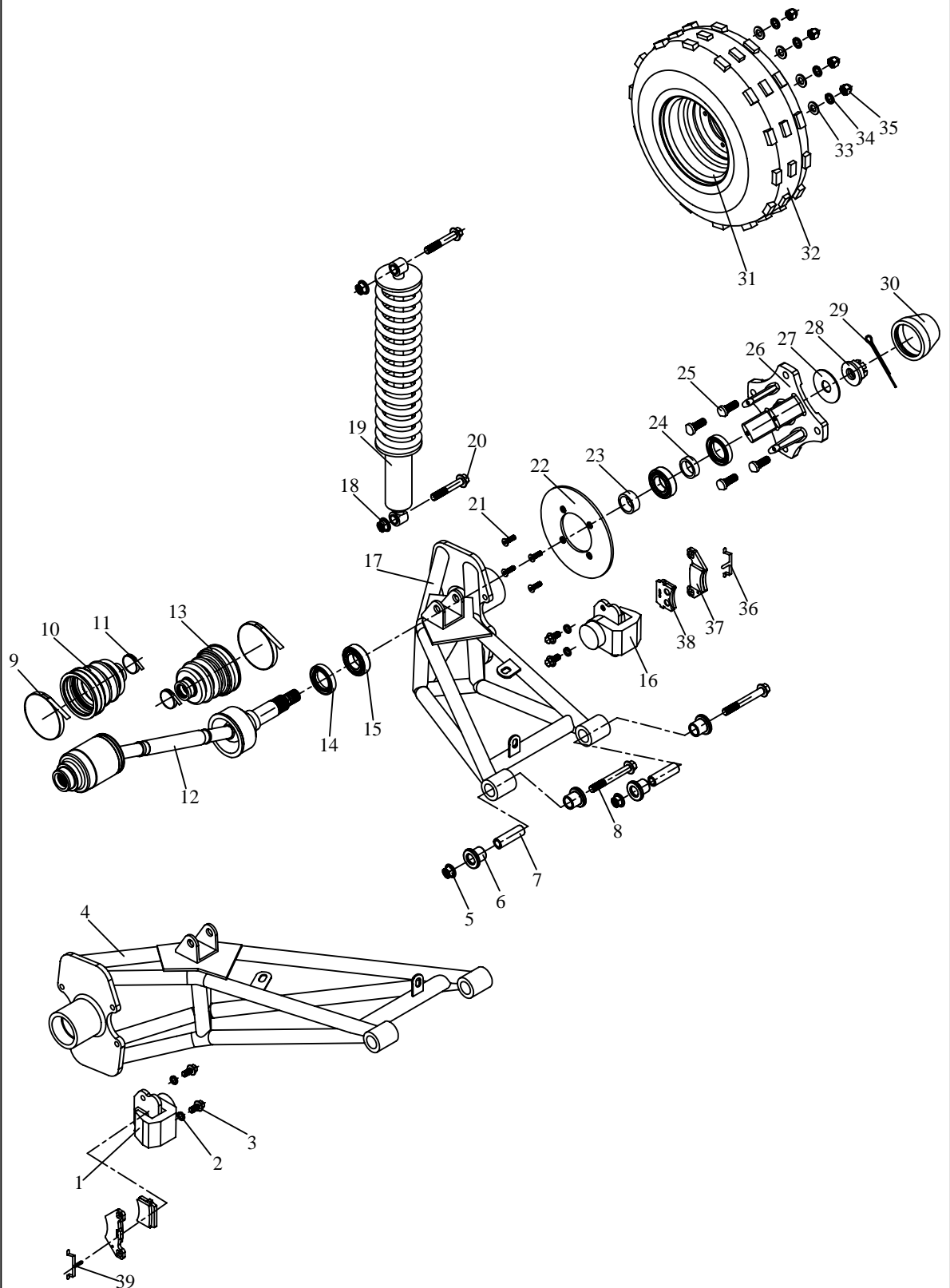
20 CONTROL SYSTEM ASSEMBLY			
NO.	PART NO.	DESCRIPTION	Q'TY
1	GB/T91-2000 3.2X40	COTTER PIN 3.2X40	2
2	GB/T6179-1986 M10	SLOTTED NUT M10	2
3	GB/T93-1987 10	SPRING WASHER 10	2
4	GB/T95-1985 10	PLAIN WASHER 10	3
5	DS250.03.00.00.02	TIE ROD END	2
6	GB6172.1-2000 M12X1.25	THIN NUT M12X1.25	2
7	DS150.03.03.00.00	TIE ROD	2
8	GB6172.1-2000 M12LX1.5	THIN NUT M12LX1.5	2
9	GB5787-1986 M12X1.25X80	FLANGE BOLT M12X1.25X80	2
10	DI250.03.00.00.02	BAFFLE PLATE	1
11	D800.05.01.00.03	SPACER SLEEVE.Ø 12	4
12	POSA12L	ROD END BEARING 12L	2
13	D800.05.01.03.07	DUST GUARD PLATE	1
14	D800.05.01.03.06	BRACKET	1
15	D800.05.01.03.08	ADDING OIL MOUTH	1
16	GB6177.1-2000 M10X1.25	FLANGE NUT M10X1.25	4
17	D800.05.01.03.01	SOCKET	1
18	DS150.03.04.00.02	POSITIVE STOP	2
19	D800.05.01.03.02	STEERING GEAR SHAFT	1
20	D800.05.01.03.10	OILINESS BEARING 14C7X18X12	1
21	D800.05.01.03.09	BALL BEARING 20X42X12	1
22	GB5787-1986 M10X1.25X75	FLANGE BOLT M10X1.25X75	2
23	D800.05.01.03.05	BEARING COVER	1
24	GB5787-1986 M6X25	FLANGE BOLT M6X25	4
25	GB5787-1986 M10X1.5X12	FLANGE BOLT M10X1.5X12	2
26	GB2672-1986 M6X12	SOCKET HEAD SCREW M6X12	9
27	D800.05.01.03.04	GEAR RACK	1
28	D800.05.01.03.03	CAPPING PLATE	1
29	GB/T93-1987 8	SPRING WASHER 8	2
30	GB/T5783-2000 M8X30	BOLT M8X30	2
31	DS150.03.02.01.00	SHAFT.SLIP UNIVERSAL JOINT	1
32	DS150.03.02.02.00	SPRING WASHER	1
33	DS150.03.02.03.00	SLEEVE.SLIP UNIVERSAL JOINT	1
34	GB/T894.1-1986 15	CIRCLIP FOR AXIS 15	1
35	GB/T893.2-1986 28	CIRCLIP FOR HOLE 28	1
36	GB/T276-1994 61803	BALL BEARING 61803	1
37	GB5787-1986 M10X1.25X30	FLANGE BOLT M10X1.25X30	2
38	DS150.03.01.00.02	SLEEVE.STEERING COLUMN	1
39	GB/T276-1994 61902	BALL BEARING 61902	1
40	GB/T893.2-1986 26	CIRCLIP FOR HOLE 26	1
41	S650.05.01.01.03	RUBBER BUSH.STEERING WHEEL SHAFT	1
42	DS150.03.01.00.01	STEERING WHEEL SHAFT	1
43	GB/T6187-2000 M6	SELF-LOCKING FLANGE NUT M6	3
44	DS250.03.01.00.02	STEERING WHEEL	1
45	GB5787-1986 M6X20	FLANGE BOLT M6X20	3
46	DS250.03.01.00.01	RUBBER COVER	1

20 CONTROL SYSTEM ASSEMBLY



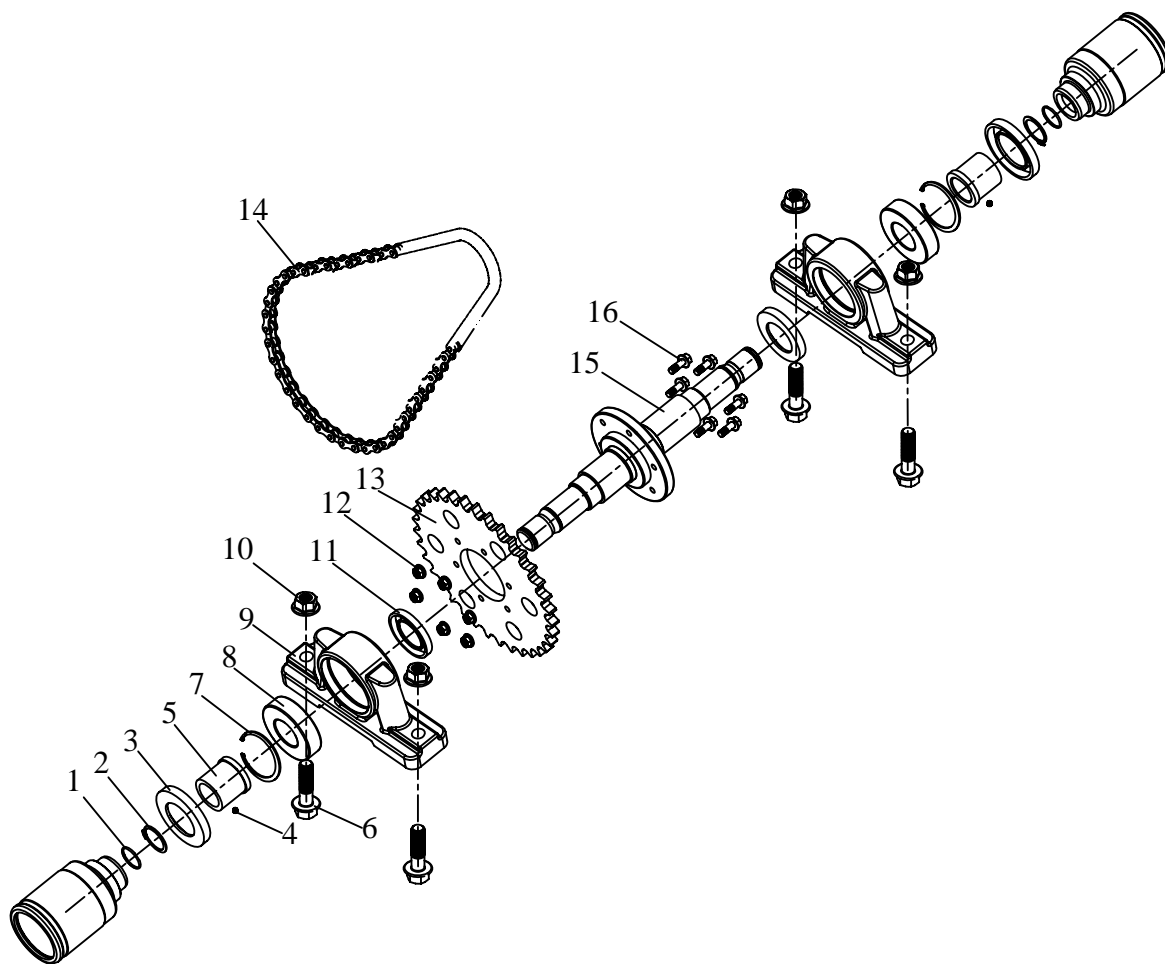
20 CONTROL SYSTEM ASSEMBLY			
NO.	PART NO.	DESCRIPTION	Q'TY
47	GB818-85 M4×5	CROSS PANHEAD SCREW M4x5	2
48	GB/T93-1987 4	SPRING WASHER 4	2
49	DN250.04.01.01.00	MAIN PISTON.BRAKE	1
50	GB6187.1-2000 M8	FLANGE LOCK NUT M8	2
51	DN250.04.01.00.07	PUSH POLE.BRAKE	2
52	GB6172.1-2000 M8	THIN NUT M8	2
53	GB/T91-2000 3X30	COTTER PIN 3X30	2
54	GB5787-1986 M8X30	FLANGE BOLT M8X30	2
55	D250.10.005	"T" BLOCK	1
56	D250.10.003	SPRING	2
57	D250.04.002	SHOCK ABSORBING BUSHING.PEDAL	4
58	DS150.04.01.00.00	BRAKE PEDAL	1
59	GB6177.1-2000 M6	FLANGE NUT M6	4
60	GB5783-2000 M6X30	FULL-THREAD BOLT M6X30	3
61	GB/T91-1986 2X20	COTTER PIN 2X20	1
62	GB/T95-1985 6	PLAIN WASHER 6	1
63	GB882-86 6X26	AXLE PIN 6X26	1
64	DS150.04.00.00.01	AXLE.THROTTLE PEDAL	1
65	DS150.04.02.00.00	THROTTLE PEDAL	1
66	DS150.04.04.00.00	CABLE.THROTTLE	1
67	GB/T95-1985 8	PLAIN WASHER 8	1
68	GB6177.1-2000 M6X15	FLANGE NUT M6X15	2
69	GB/T91-2000 3X25	COTTER PIN 3X25	1
70	DS150.05.04.01.00	SHIFT CABLE	1
71	D250.08.009	BUSH1.SHIFT LEVER	1
72	D250.08.005	BUSH2.SHIFT LEVER	1
73	D250.08.004	SPRING.SHIFT LEVER	1
74	GE12E	KNUCKLE BEARING GE12E	1
75	DI250.05.03.03.00	SHIFT LEVER	1
76	JD10.82.101	RUBBER BUSHING.SHIFT	1
77			
78			
79			
80			
81			
82			
83			
84			
85			
86			
87			
88			
89			
90			
91			
92			

21 REAR SUSPENSION



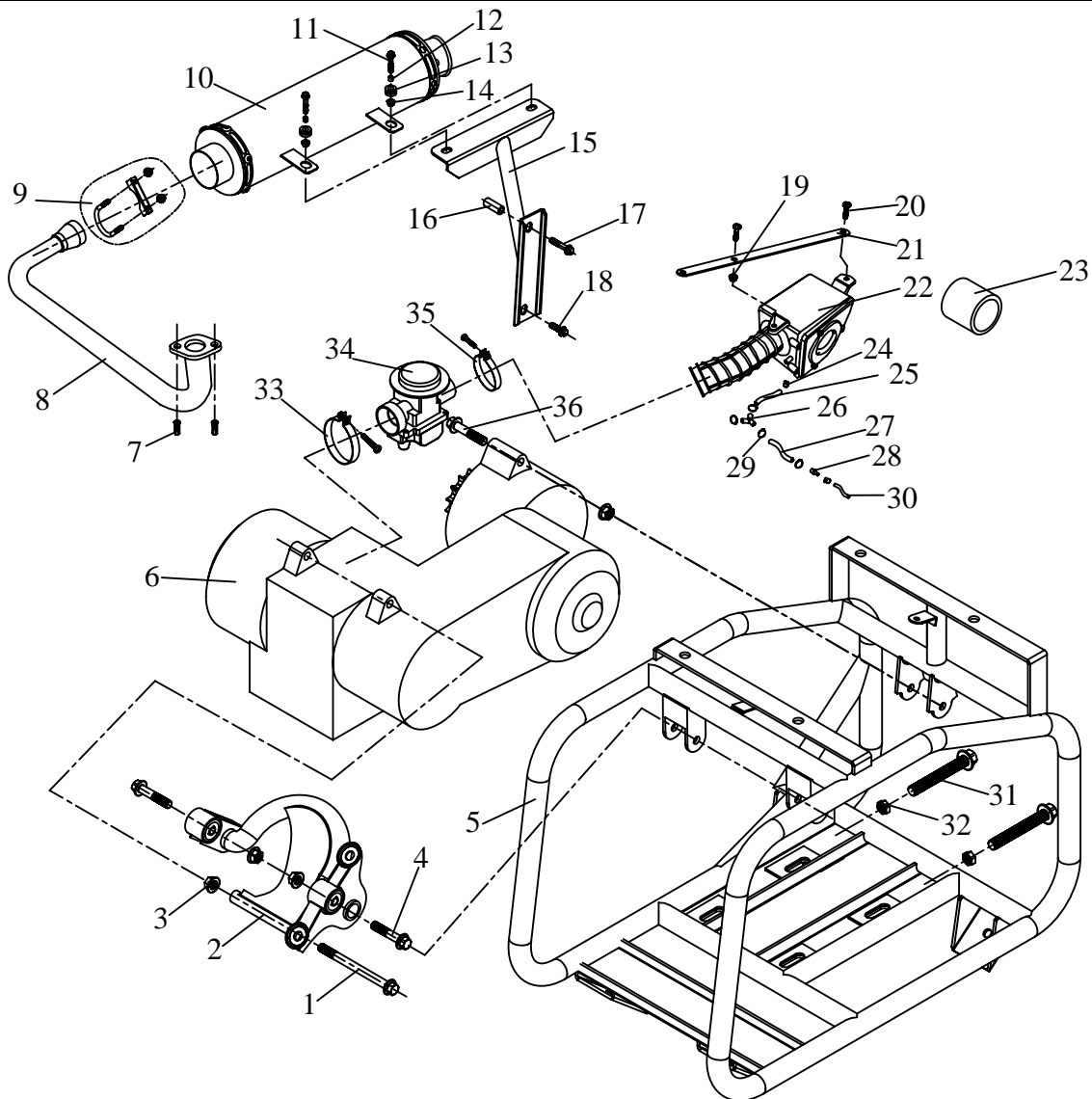
21 REAR SUSPENSION			
NO.	PART NO.	DESCRIPTION	Q'TY
1	DN250.04.01.00.02	BRAKE CALIPER 2	1
2	GB/T93-1987 8	SPRING WASHER 8	4
3	GB6177.1-2000 M8X15	FLANGE NUT M8X15	4
4	DS150.09.03.00.00	REAR ARM.R	1
5	GB6177.1-2000 M10X1.25	FLANGE NUT M10X1.25	4
6	D650.02.01.00.01	RUBBER BUSHING.REAR ARM	8
7	D650.02.01.00.02	STEEL BUSHING.REAR ARM	4
8	GB5787-1986 M10X1.25X80	FLANGE BOLT M10X1.25X80	4
9	DI250.07.01.00.01	BRIDLE.BOOT	4
10	DI250.07.01.00.02	INNER BOOT	2
11	DI250.07.01.00.03	BRIDLE.BOOT	4
12	DI250.07.01.00.00	HALF AXLE	2
13	DI250.07.01.00.04	OUTER BOOT	2
14	GB9877.1-1988 FB32X47X8	SEAL FB 32X47X8	4
15	GB/T5787-86 6005	BALL BEARING 6005	4
16	DN250.04.01.00.01	BRAKE CALIPER 1	1
17	DS150.09.01.00.00	REAR ARM.L	1
18	GB6177.1-2000 M12X1.5	FLANGE NUT M12X1.5	4
19	DS150.09.02.00.00	SHOCK ABSORBER.REAR	2
20	GB5787-1986 M12X1.5X60	FLANGE BOLT M12X1.5X60	4
21	GB2673-1986 M6x20	SUNK SCREW M6X20	4
22	DI250.04.01.00.04	DISC.REAR BRAKE	2
23	DI250.09.00.00.01	SPACER 1.REAR WHEEL	2
24	DI250.09.00.00.06	SPACER 2.REAR WHEEL	2
25	DI250.02.00.00.02	KNURLED BOLT	8
26	DI250.09.00.00.05	HUB.BRAKE DISC	2
27	D250.06.011	WASHER.REAR WHEEL AXLE	2
28	DI250.07.04.00.01	SLOTTED NUT.HALF AXLE	2
29	GB/T91-2000 4X30	COTTER PIN 4X30	2
30	JD0360010	HUB COVER.FRONT WHEEL	2
31	D250.00.037	RIM.REAR	2
32	JD0780000	TIRE AT22X10-10.REAR	2
33	GB/T95-1985 10	PLAIN WASHER 10	8
34	GB/T93-1987 10	SPRING WASHER 10	8
35	GB/T923-1988 M10x1.25	CAPPED NUT M10X1.25	8
36	DN250.04.01.00.05	SPRING PLATE 1.BRAKE CLIPPER	1
37	DN250.04.01.00.04	FRACTION PLATE 2	2
38	DN250.04.01.00.03	FRACTION PLATE 1	2
39	DN250.04.01.00.06	SPRING PLATE 2.BRAKE CLIPPER	1
40			
41			
42			
43			
44			
45			
46			

22 MID AXIS ASSEMBLY



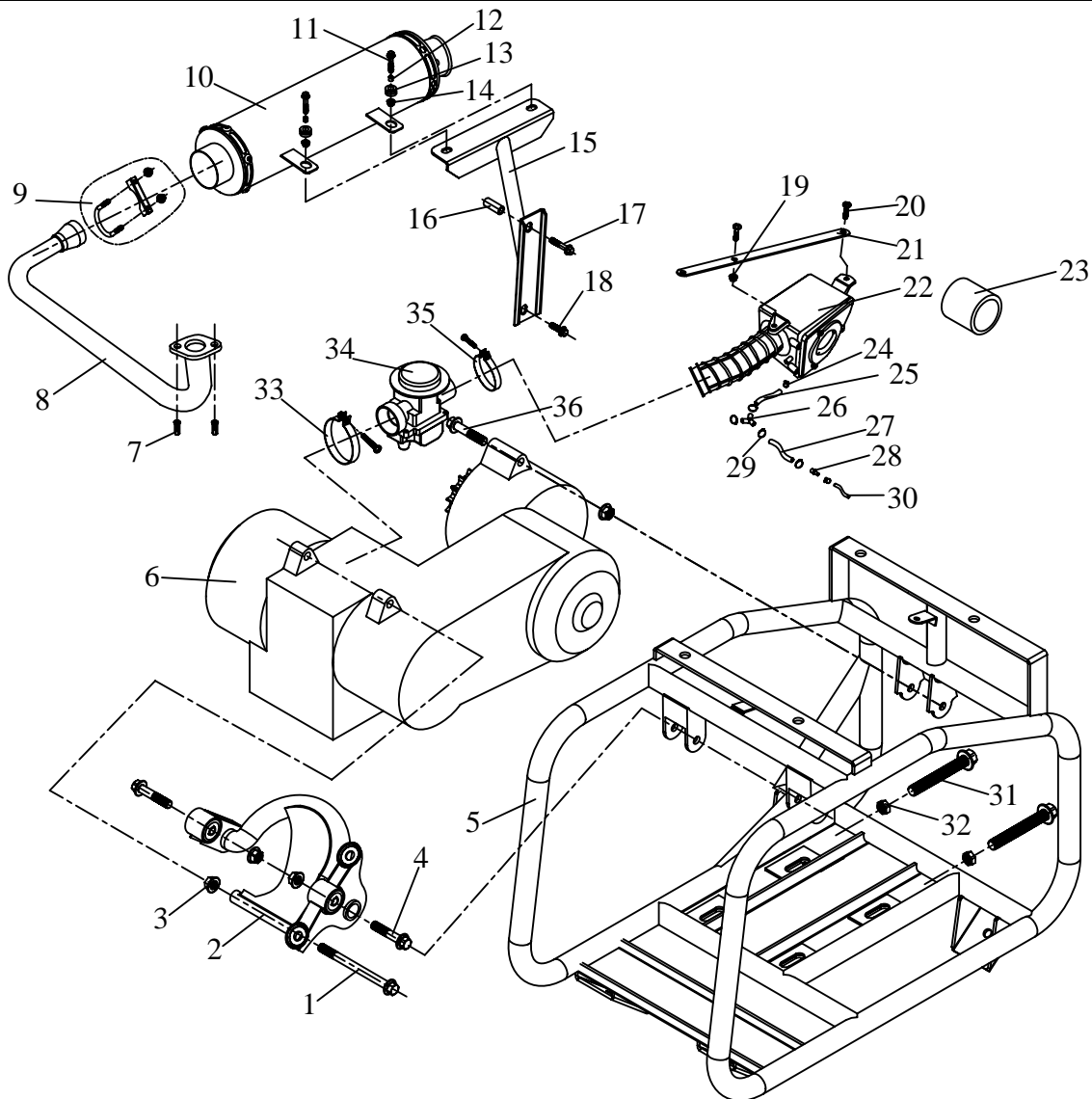
NO.	PART NO.	DESCRIPTION	Q'TY
1	DI250.07.00.00.01	SPRING CIRCLIP	2
2	GB894.1-86 26	CIRCLIP FOR AXIS 26	2
3	GB/T9877-1988 FB38X62X8	GREASE SEAL FB 38X62X8	2
4	GB77-85 M5X6	HOLDING SCREW M5X6	2
5	DN250.07.00.00.03	SLEEVE.SPROCKET SHAFT	2
6	GB5787-1986 M12X1.5X45	FLANGE BOLT M12X1.5X45	4
7	GB893.1-86 62	CIRCLIP FOR HOLE 62	2
8	GB/T281-1994 1206	TWO-ROW BALL BEARING	2
9	DN250.07.00.00.06	BEARING BLOCK	2
10	GB6177.1-2000 M12X1.5	FLANGE NUT M12X1.5	4
11	GB/T9877-1988 FB35X55X8	GREASE SEAL FB 35X55X8	2
12	GB6177.1-2000 M8	FLANGE NUT M8	6
13	DI250.07.00.00.02	CHAIN GEAR.35 TEETH	1
14	DS150.07.02.00.00	CHAIN	1
15	DS150.07.01.00.00	MID AXIS	1
16	GB5787-1986 M8X30	FLANGE BOLT M8X30	6

23 ENGINE SYSTEM ASSEMBLY



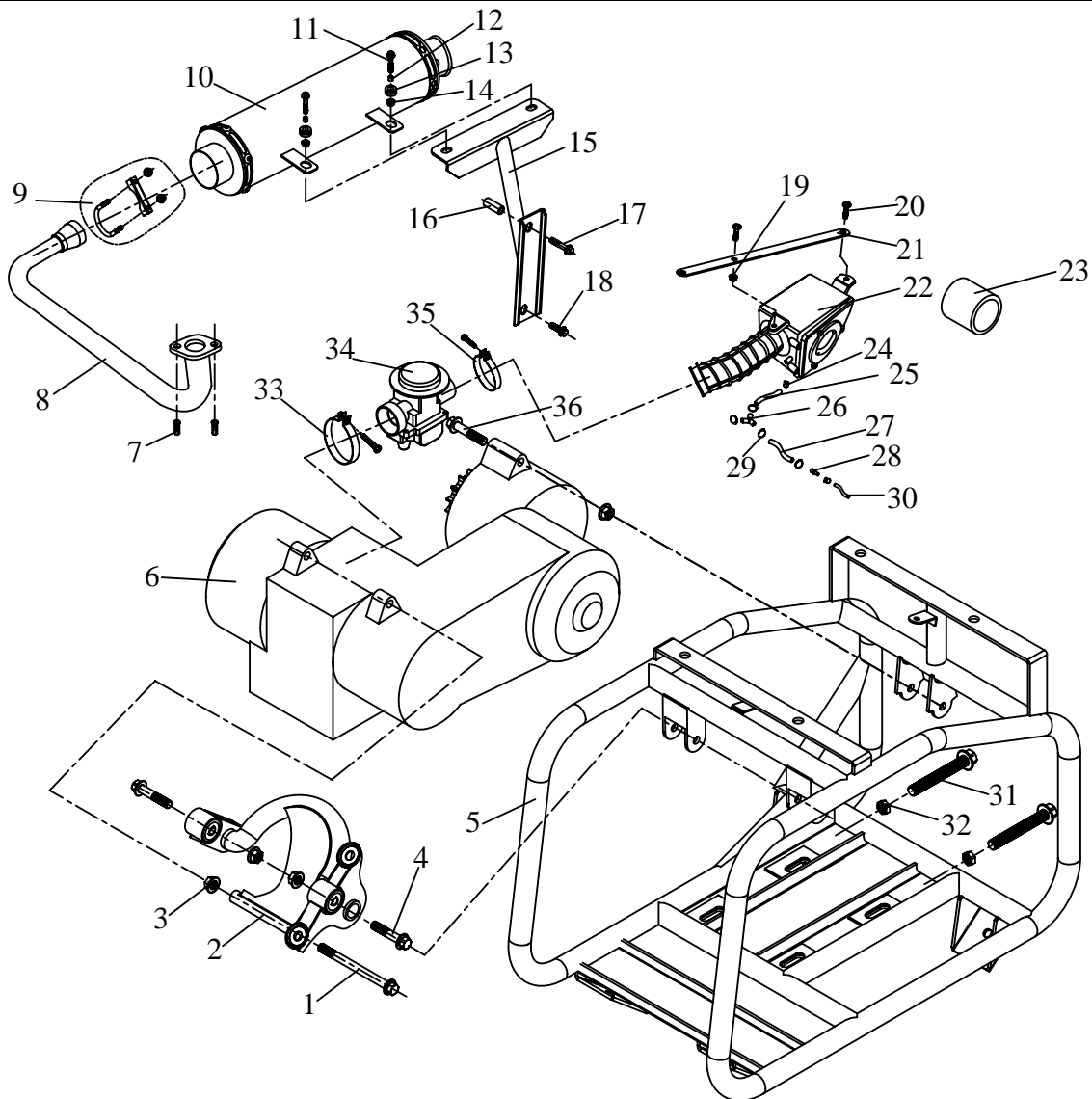
NO.	PART NO.	DESCRIPTION	Q'TY
1	GB5787-1986 M10X1.25X180	FLANGE BOLT M10X1.25X180	1
2	JD11000013	HANGING	1
3	GB6177.1-2000 M10X1.25	FLANGE NUT M10X1.25	4
4	GB5787-1986 M10X1.25X55	FLANGE BOLT M10X1.25X55	2
5	DS150.01.03.00.00	ENGINE FIXED MOUNT	1
6	DS150.07.03.00.00	ENGINE ASSEMBLY	1
7	DS150.05.03.00.02	CAPPED NUT.EXHAUST PIPE	2
8	DS150.05.03.00.01	EXHAUST ELBOW PIPE	1
9	DI250.05.02.00.02	INTAKE CLAMP OF MUFFLER	1
10	DS150.05.03.00.04	EXHAUST PIPE	1
11	GB5787-1986 M8X30	FLANGE BOLT M8X30	2
12	JD1910002	STEEL BUSH.WATER TANK	2
13	JD1910002A	RUBBER BUSH.EXHAUST PIPE	2
14	GB/T6187-2000 M8	SELF-LOCKING FLANGE NUT M8	2
15	DS150.01.04.03.00	HOLDER.EXHAUST PIPE	1

23 ENGINE SYSTEM ASSEMBLY



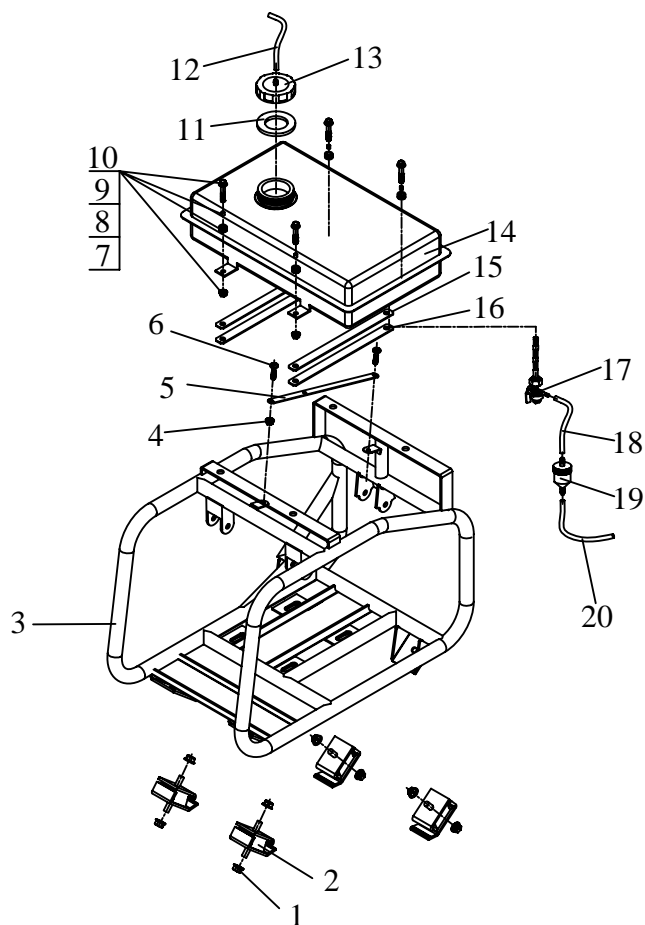
NO.	PART NO.	DESCRIPTION	Q'TY
16	DS150.05.03.00.05	SLEEVE,EXHAUST PIPE	1
17	GB5787-1986 M8X50	FLANGE BOLT M8X50	1
18	GB5787-1986 M8X20	FLANGE BOLT M8X20	1
19	GB/T6187-2000 M6	SELF-LOCKING FLANGE NUT M6	1
20	GB5787-86 M6X20	FLANGE BOLT M6X20	2
21	DS150.01.04.00.02	FIXED BAR OF AIR FILTER	1
22	DS150.05.02.01.00	AIR FILTER	1
23	DS150.05.02.01.01	AIR CLEANER FILTER	1
24	N650.08.05.00.01	HOSE CLAMP	6
25	DS150.05.02.00.04	Ø 8 FUEL PIPE 2	1
26	DS150.05.02.00.02	THREE-WAY CONNECTION	1
27	DS150.05.02.00.03	Ø 8 FUEL PIPE 1	1
28	D800.04.03.00.01	RETURN LINE JOINT	1
29	D650.04.03.00.04	FUEL PIPE CLAMP(10-16)	4
30	DS150.05.02.00.01	Ø 4 FLEXIBLE FUEL PIPE	1

23 ENGINE SYSTEM ASSEMBLY



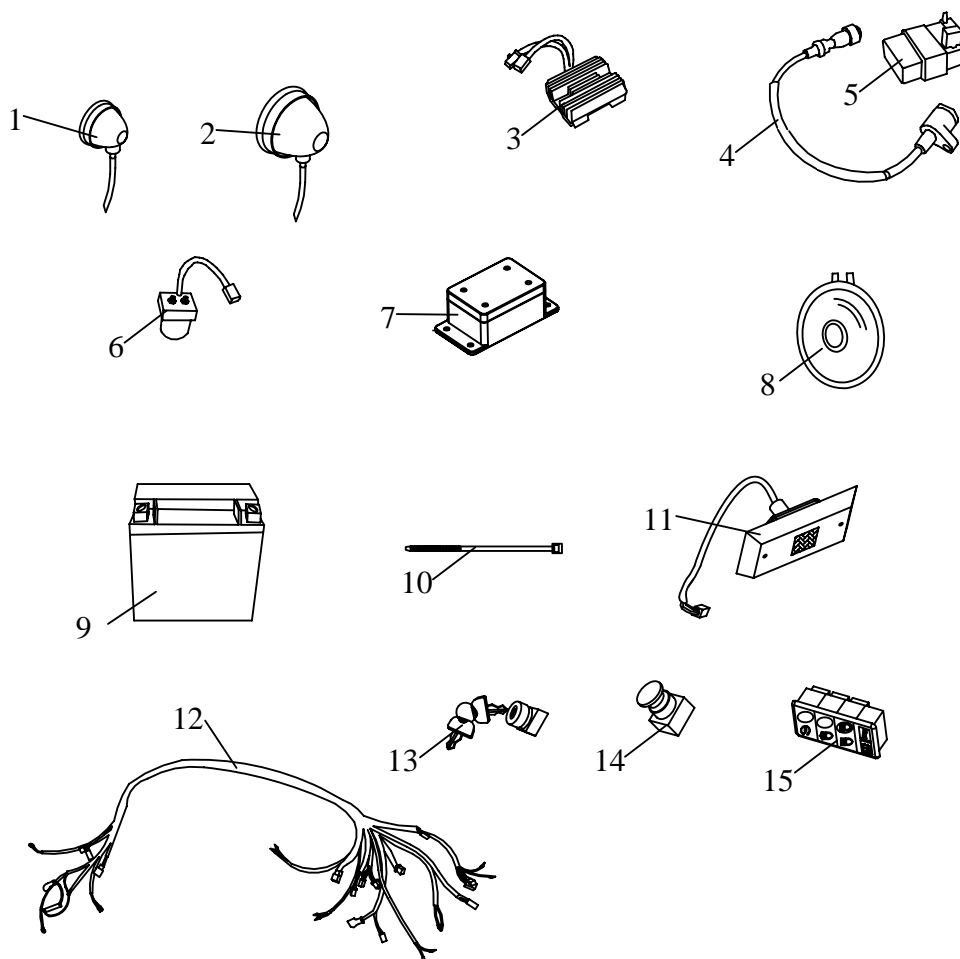
NO.	PART NO.	DESCRIPTION	Q'TY
31	GB5783-2000 M12X1.75X100	FULL-THREAD BOLT M12X1.75X100	2
32	GB6170-2000 M12X1.75	NUT M12X1.75	2
33	DS150.05.02.02.01	MOUNTING.CARBURETOR	1
34	DS150.05.02.02.00	CARBURETOR	1
35	DS150.05.02.01.01	MOUNTING.AIR FILTER	1
36	GB5787-86 M10X1.25X70	FLANGE BOLT M10X1.25X70	1
37			
38			
39			
40			
41			
42			
43			
44			
45			

24 FUEL TANK



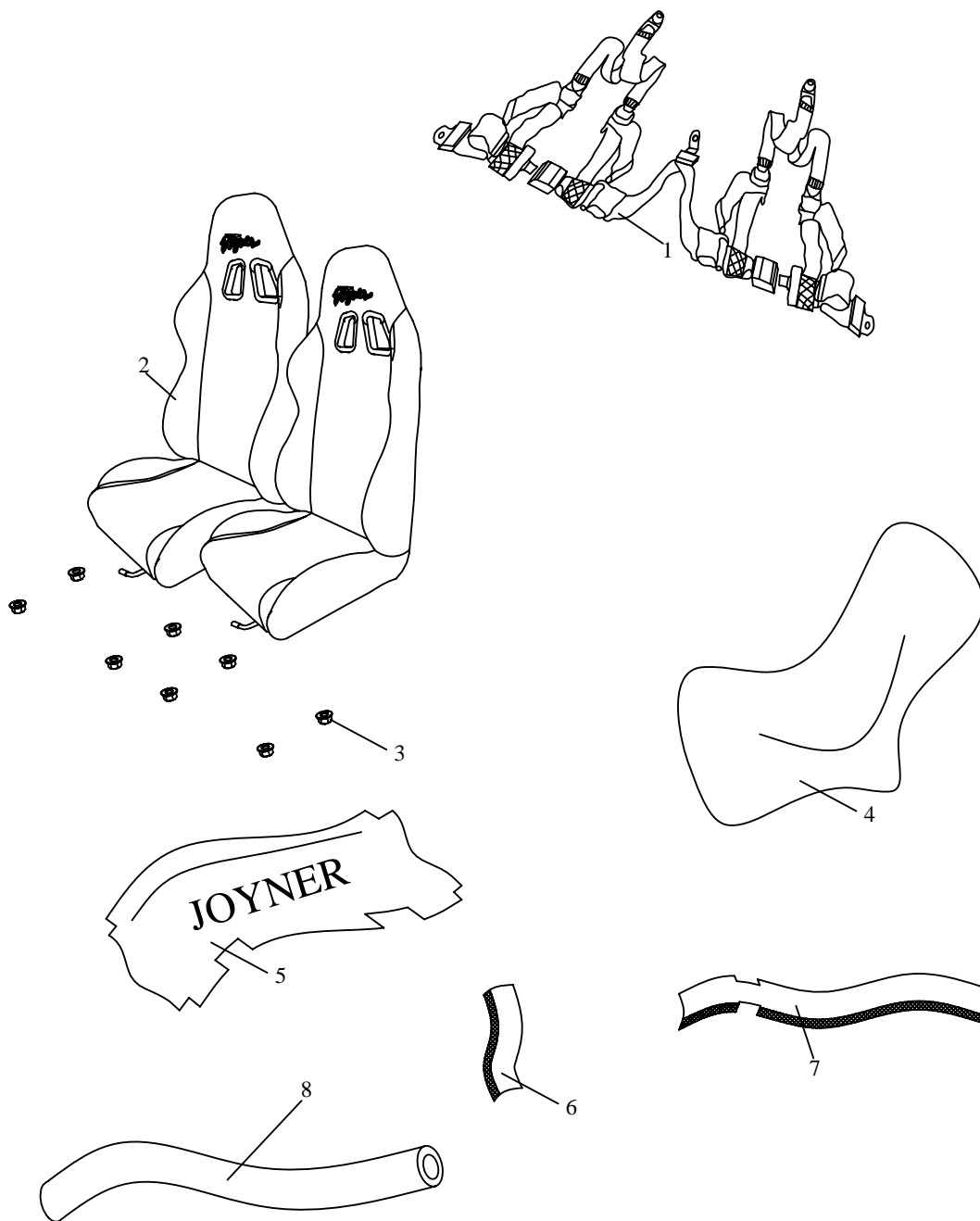
NO.	PART NO.	DESCRIPTION	Q'TY
1	GB6177.1-2000 M10	FLANGE NUT M10	8
2	DS250.08.00.00.03	ENGINE BUMPER	4
3	DS150.01.03.00.00	FIXED BAR OF ENGINE	1
4	GB/T6187-2000 M6	SELF-LOCKING FLANGE NUT M6	1
5	DS150.01.04.00.02	FIXED BAR OF AIR FILTER	1
6	GB5787-86 M6X20	FLANGE BOLT M6X20	2
7	GB/T6187-2000 M8	SELF-LOCKING FLANGE NUT M8	4
8	JD1910003	RUBBER BUSH.WATER TANK	4
9	JD1910002	STEEL BUSH.WATER TANK	4
10	GB5787-86 M8X30	FLANGE BOLT M8X30	4
11	JD1135001	RUBBER BUSH.FULE TANK	1
12	DS150.05.02.00.01	Ø4 FLEXIBLE FUEL PIPE	1
13	JD1135000	FUEL TANK CAP	1
14	D250.11.804	FUEL TANK	1
15	S250.11.003	RUBBER BAND	2
16	DI250.05.02.00.01	SUPPORT.FUEL TANK	2
17	JD1138000	FUEL TANK SWITCH	1
18	DI250.05.02.00.02	FUEL PIPE 1	1
19	DS250.11.01.00.09	GASOLINE FILTER	1
20	D250.11.060	FUEL PIPE 2	1

25 ELECTRICAL APPLIANCE



NO.	PART NO.	DESCRIPTION	Q'TY
1	DS150.10.06.00.00	SPOT LIGHTS	2
2	DS150.10.03.00.00	HEADLIGHT	2
3	D250.07.915	VOLTAGE REGULATOR	1
4	DI250.10.05.00.00	IGNITION COIL	1
5	DS150.10.04.00.00	CDI	1
6	D250.07.912	RELAY	1
7	DS150.10.01.01.00	FUSE BOX	1
8	DS150.10.08.00.00	HORN	1
9	D250.07.802	BATTERY	1
10	D650.08.05.00.06	PLASTIC TAP	
11	DS150.10.09.00.00	TAILLIGHT	2
12	DS150.10.01.00.00	ELECTRIC CABLE	1
13	JD0830000	IGNITION SWITCH	1
14	D650.06.00.13.00	HORN BUTTON	1
15	DS150.10.02.00.00	PANEL SWITCH	1
16			
17			
18			

26 OTHER PARTS



NO.	PART NO.	DESCRIPTION	Q'TY
1	DS150.11.02.00.00	SAFETY BELT	1
2	DS150.11.01.00.00	SEAT	2
3	GB/T6187-2000 M8	SELF-LOCKING FLANGE NUT M8	8
4	DS150.11.08.00.00	COWL	1
5	DS150.11.07.00.00	CEILING	1
6	DS150.11.10.00.00	COWL.SHOCK ABSORBER	2 pairs
7	DS150.11.03.00.00	COWL.PROTECTIVE BAR	1 series
8	DS150.11.14.00.00	FOAM COVER	1 series

PREPARATION ATTACH INSTRUCTION

ATTACH BATTERY

STEP 1:FILL THE ELECTROLYTE AS BELOW

a) Pull the seal cap out of the plastic bottle



b) Turn over the seal cap 180 degree, fix it on the outlet of plastic bottle



c) Cut the inlet of plastic bottle



d) Fill the battery with electrolyte to upper lever by inserting every inlet of the battery



STEP 2:Put the battery into the box on go-kart.

STEP 3:Connect the wire to battery as below picture; red to “+”, black to “-”.



STEP 4:Fix the battery cap, rubber cushion and tighten both bolts and nuts.

Notice:

Before use new battery, it need to notice follows;

- 1- After the battery is filled electrolyte, the new battery need to recharge as the Owner's manual said. Otherwise, the new battery will be damaged and can't recharge.
- 2- The new battery can't overload in use, otherwise it damage forever.
- 3- The new battery need to maintenance with recharge as the Owner's manual said.

ATTACH PROTECTIVE BARS



1、

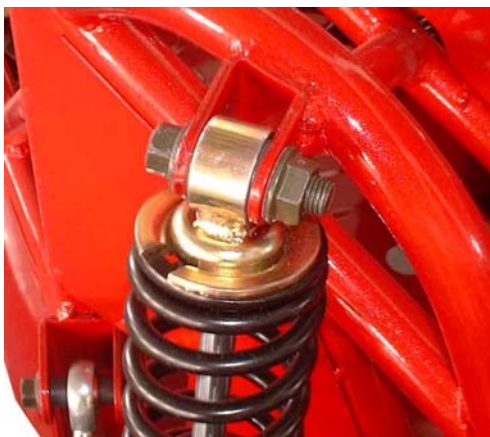


2、



ATTACH REAR SHOCK

- a) Remove the bolt and the nut
- b) Attach the rear shock as below pictures:



1、



2、

ATTACH TRAILING ARM



ATTACH BRAKE PIPE

Front:



Rear:



ATTACH FRONT SHOCK

- 1- Remove pin, nut, adjust cushion from the bolt on the tie rod.
- 2- Insert the tie rod into the hole on the front wheel axle.
- 3- Tighten the nut, insert the pin, then lock the pin.
- 4- Put the upper hole of the front shock into the groove on the frame.
- 5- Insert the bolt through the hole on the frame and the hole on the front shock.
- 6- Tighten the nut.



1、



2、



3、



ATTACH FRONT TIRE

The hub to fix the front tire is packed as below:



- 1- Remove four nuts, four spring washers, four plain washers on the hub.
- 2- Fix the rim on the hub.



- 3- Insert the washers, spring washers through bolt on the hub. Tighten four nuts.



Notice:

Direction marked on the tire must correspond to the vehicle forward



DEALER PRE-DELIVERY INSPECTION



TEAM JOYNER USA

www.teamjoynerusa.com



DEALER PRE-DELIVERY INSPECTION

1245 N. Mondel Dr. • Gilbert, AZ 85233
Ph: 480-813-6363 • Fax: 480-813-6379

This form registers warranty

This form registers warranty

SOLD TO:

We have determined that your vehicle is safe to operate

☐ YES ☐ NO

Customer Name _____

Address _____

City _____

State _____

Zip _____

Email _____

Contact Person _____

Phone _____

Phone _____

Name _____

Fax _____

Cell _____

Technician _____

Supervisor _____

SALE DATE:		DELIVERY DATE:		YEAR:		MAKE:		VIN #:				COLOR:			
ITEM		OPERATIONAL		ITEM		OPERATIONAL		ITEM		OPERATIONAL		ITEM		OPERATIONAL	
Paint		Yes	No	Carburetor		Yes	No	Mirror		Yes	No	Rear Diff		Yes	No
Lug Nuts		Yes	No	Throttle Cable		Yes	No	Battery		Yes	No	Wheel Bearings		Yes	No
Axle Nuts		Yes	No	Choke Cable		Yes	No	Ignition		Yes	No	Blinkers		Yes	No
Tie Rods		Yes	No	Emergency Brake		Yes	No	Gauges		Yes	No	Fuel Lines		Yes	No
Axles		Yes	No	Charging System		Yes	No	Switches		Yes	No	Steering Wheel		Yes	No
CV Joint		Yes	No	Tires/Wheels		Yes	No	Fluids		Yes	No	Clutch		Yes	No
Seats		Yes	No	Cooling System		Yes	No	Gas		Yes	No	Belts		Yes	No
Seat Belts		Yes	No	Winches		Yes	No	Engine Oil		Yes	No	Brake Pedal		Yes	No
Wiring Harness		Yes	No	A Arms		Yes	No	Transmission Fluid		Yes	No	EPA Sticker		Yes	No
Brakes		Yes	No	Swing Arms		Yes	No	Gear Oil		Yes	No	Carb Sticker		Yes	No
Brake Lines		Yes	No	Shocks		Yes	No	Shock Oil		Yes	No	Oil Vent System		Yes	No
Brake Pads		Yes	No	Steering Boy		Yes	No	Coolant Fluid		Yes	No				
Shifter		Yes	No	Lights		Yes	No	Brake Fluid		Yes	No				
Throttle Pedal		Yes	No	Horn		Yes	No	Front Diff		Yes	No				

REMARKS:

Dealer Name _____

Address _____

City _____

State _____

Zip _____

Email _____

Contact Person _____

Phone _____

Phone _____

Name _____

Fax _____

Cell _____

Dealers Signature _____

Date _____

I agree to terms and conditions _____

Customer Signature _____

Date _____

This form registers warranty

____Jumping the vehicle can cause serious damage to the drive train (axle, transmission, suspension).

____Injury or death can result from jumping vehicle. Do Not Jump.

____I understand that the roll bars are cosmetic and a roll over could cause death or serious injury. The seller is not liable for death or injury.

____I have inspected all machines for any cosmetic damage and found it/them to be satisfactory. I further understand that cosmetic damage is NOT covered by any factory warranties and unless noted here are deemed accepted by me.

____Sand dunning or desert riding is dangerous. Death or injury could occur. The seller is not liable for injury or death.

____I understand all sales are final and that there is no right of rescission, no option for return or exchange for any vehicle purchased, and that the titled and registered machines were effectively purchased when I signed the title application.

____I understand the warranty is 90 day manufacture defect only with the following not covered: axles, electrical batteries, light bulbs, clutches, turbo cartridges, carburetor cleaning, piston rings that are scorched from one revving, rims/tires, bearings.

____I understand that although some lending institutions do not require insurance, state law DOES require liability insurance and a driver's license. I also understand that none of the products offered by the dealer constitutes insurance and a separate policy would have to be purchases from an outside source to protect my purchase and fulfill state requirements.

____I have been shown the VIN number for each machine and they match this form and all paperwork received.

____I understand that I have only 72 hours to notify the seller of any issues to the paperwork or the vehicle.

____Off Road use only. Driving on paved roads can cause axle or transmission damage. Both tires turn equally, this is not a limited slip differential. Injury or death can occur form operating a non DOT vehicle on public roads.

____Turbo systems, system lessen life of engine, over revving the engine to increase boost of turbo can cause engine damage. This will not be covered under warranty.

ADDITIONAL TERMS AND CONDITIONS OF SALE

1. PROMISE TO PAY. By signing this contract, Buyer agrees to pay Seller the "TOTAL DUE".
2. TIME OF ESSENCE. Time is of the essence of this contract. Sellers acceptance of partial payments shall not in any manner modify the terms of this contract and such acceptance shall not be construed as a waiver of any subsequent defaults on Buyer's part nor shall it waive the "time is of the essence" provision.
3. NOTICE. Any notice required to be given to Buyer shall be deemed reasonable notification if
(I) mailed by ordinary mail, postage prepaid, to Buyer's mailing address as shown on this contract or to Buyer's most recent address as shown by a "notice of change of address" on file with Seller, whether or not such notice is actually received by buyer, or(II) if given in any other manner which results in Buyer's actual receipt of such notice.
4. BAD CHECK. If Buyer pays Seller with a check that is dishonored or unpaid for any reason, Seller may at Seller's sole option, terminate this contract and retake the vehicle, or make claims against Buyer on the check. In addition, Seller will charge Buyer a \$25

returned check charge plus any actual charges assessed by Seller's financial institution resulting from such returned check.

5. ATTORNEYS FEES. If it is necessary for Seller to take legal action to enforce any of seller's rights under this contract, Buyer agrees to pay to the extent permitted by law, the seller's reasonable attorneys fees and court costs.
6. GENERAL. This contract is governed by applicable federal law and the laws of the State of Arizona. Any provisions found to be invalidate the remainder hereof, Waiver of any default shall not constitute waiver of any subsequent default. All words used herein shall be construed to be of such gender and number as the circumstances require. The contract shall be binding upon Buyer's heirs, personal representatives, successors and assigns and shall inure to the benefit of Seller's successors and assigns. This contract constitutes the entire agreement between the parties with respect to the subject matter herein, and may not be altered or amended unless made in writing and duly executed by Seller.
7. CASH DEPOSIT. If Buyer fails or refuses to accept delivery of any Vehicle or product or fails to comply with this contract, Seller may keep any cash deposit as liquidated damages, to the extent not prohibited by law. The deposit may also be used reimburse Seller for any expenses and losses Seller incurs or suffers as a result of Buyer's failure or refusal to accept deliver of the Vehicle or product or to comply with this contract. Such expenses and losses may include Seller s reasonable attorney's fees.
8. NON-DELIVERY. Seller is not liable for failure to deliver or for delay in delivering the Vehicle or other product where such failure or delay is due, in whole or in part, to any cause beyond Seller's control or without Seller's fault or negligence,
9. RISK OF LOSS, INSURANCE. The risk of loss to the Vehicle or any other items covered by this invoice passes to Buyer upon delivery of the Vehicle or other goods to Buyer at the address set forth on this invoice for shipment to Buyer or such other place of receipt designated by Buyer. Buyer is responsible for maintaining its own theft and liability insurance coverage for the Vehicle.
10. AGE. Buyer represents and warrants to Seller that Buyer is over the age of majority and is fully competent to enter into this contract. Buyer acknowledges that Seller is relying on this representation in entering into and performing this contract.

ADDITIONAL TERMS AND CONDITIONS OF SALE

1. PROMISE TO PAY. By signing this contract, Buyer agrees to pay Seller the "TOTAL DUE".
2. TIME OF ESSENCE. Time is of the essence of this contract, Seller's acceptance of partial payments shall not in any manner modify the terms of this contract and such acceptance shall not be construed as a waiver of any subsequent defaults on Buyer's part nor shall it waive the "time is of the essence" provision.
3. NOTICE. Any notice required to be given to Buyer shall be deemed reasonable notification if (I) mailed by ordinary mail, postage prepaid, to Buyer's mailing address as shown on this contract or to Buyer's most recent address as shown by a "notice of change of address" on file with Seller, whether or not such notice is actually received by Buyer, or (II) if given in any other manner which results in Buyer's actual receipt of such notice.
4. BAD CHECK. If Buyer pays Seller with a check that is dishonored or unpaid for any

reason, Seller may at Seller's sole option, terminate this contract and retake the vehicle, or make claims against Buyer on the check. In addition, Seller will charge Buyer a \$25 returned check charge plus any actual charges assessed by Seller's financial institution resulting from such returned check.

5. ATTORNEYS FEES. If it is necessary for Seller to take legal action to enforce any of Seller's rights under this contract. Buyer agrees to pay to the extent permitted by law, the seller's reasonable attorney's fees and court costs.
6. GENERAL. This contract is governed by applicable federal law and the laws of the State of Arizona. Any provisions found to be invalid shall not invalidate the remainder hereof. Waiver of any default shall not constitute waiver of any subsequent default. All words used herein shall be construed to be of such gender and number as the circumstances require. The contract shall be binding upon Buyer's heirs, personal representatives, successors and assigns and shall inure to the benefit of Seller's successors and assigns. This contract constitutes the entire agreement between the parties with respect to the subject matter herein, and may not be altered or amended unless made in writing and duly executed by Seller.
7. CASH DEPOSIT. If Buyer fails or refuses to accept delivery of any Vehicle or product or fails to comply with this contract, Seller may keep any cash deposit as liquidated damages, to the extent not prohibited by law. The deposit may also be used to reimburse Seller for any expenses and losses Seller incurs or suffers as a result of Buyer's failure or refusal to accept delivery of the Vehicle or product or to comply with this contract. Such expenses and losses may include Seller's reasonable and loses Seller incurs or suffers as a result of Buyer's failure or refusal to accept delivery of the Vehicle or product or to comply with this contract .Such expenses and losses may include Seller's reasonable attorney's fees.
8. NON-DELIVERY. Seller is not liable for failure to deliver or for delay in delivering the vehicle or other product where such failure or delay is due. In whole or in part, to any cause beyond Seller's control or without Seller's fault or negligence.
9. RISK OF LOSS: INSURANCE. The risk of loss to the vehicle or any other items covered by this invoice passes to Buyer upon delivery of the vehicle or other goods to Buyer at the address set forth on this invoice for shipment to Buyer or such other place of receipt designated by Buyer. Buyer is responsible for maintaining its own theft and liability insurance coverage for the vehicle.

AGE. Buyer represents and warrants to Seller that Buyer is over the age of majority and is fully competent to enter into contract. Buyer acknowledges that Seller is relying on this representation in entering into performing this contract.