

ERING – Go-Kart

Go-Kart GK 125



GK 125 # 99428

ERSATZTEILELISTE

Technische Daten

Länge	2.120 mm	Leistung	7,5 PS / 5,6 KW
Breite	1.110 mm	Zündung	C.D.I. Elektronik
Höhe	1.380 mm	Antriebsart	Keilriemen
Sitzhöhe	700 mm	Getriebe	Drehmoment - Umwandler mit Rückwärtsgang
Leergewicht	161 kg	Kupplung	Fliehkraft Automatic
Höchstgeschwindigkeit	60 km/h	Starter	Elektro & Kickstarter
Rahmenbauart	Stahlrohrrahmen	Federung vorne	Öldruckstoßdämpfer verstellbar
Motorart	1Zylinder 4-Takt Motor mit Luftkühlung	Federung hinten	Öldruckstoßdämpfer verstellbar
Hubraum	124 ccm	Reifengröße	VR 16 x 8-7 HR 18 x 9,5-8
Bohrung	52,4 x 57,8 mm	VR – Bremse	Trommelbremse
Verdichtung	9.1 : 1	HR – Bremse	zentrale Scheibenbremse
Max. Drehmoment	8,2 Nm / 4500 rpm	Schalldämpfer	mit Katalysator EURO II

Ausstattung

Scheinwerfer mit Fern- und Abblendlicht 12 V, Blinkanlage,
2 Rückspiegel, 12 Volt Batterie, Tachometer, Zulassung für 1 Person,
Gepäckträger Heck

Sonstiges

Zulassung für den Straßenverkehr (Europazulassung)
Fahrerlaubnis Führerscheinklasse B oder einer Bundesdeutschen (alten,
d.h. vor dem 31.12.1998 erteilten) Fahrerlaubnis der Klasse 2 oder 3 bzw.
einer (älteren) DDR – Fahrerlaubnis der Klasse B o. C.

Die Beschreibungen des Fahrzeuges sind unverbindlich. Konstruktions- und Ausführungsänderungen vorbehalten. Farbabweichungen sind drucktechnisch bedingt.

ERING GmbH • Ringstraße 1 • D-84030 Ergolding
Tel. +49(0)871-7604-0 • Fax +49(0)871-7604-10
E-Mail: ering.gmbh@t-online.de • Internet: <http://www.ering.de>

ERING – Go-Kart

Go-Kart GK 125



GK 125 # 99428

ERSATZTEILELISTE

Technische Daten

Länge	2.120 mm	Leistung	7,5 PS / 5,6 KW
Breite	1.110 mm	Zündung	C.D.I. Elektronik
Höhe	1.380 mm	Antriebsart	Keilriemen
Sitzhöhe	700 mm	Getriebe	Drehmoment - Umwandler mit Rückwärtsgang
Leergewicht	161 kg	Kupplung	Fliehkraft Automatic
Höchstgeschwindigkeit	60 km/h	Starter	Elektro & Kickstarter
Rahmenbauart	Stahlrohrrahmen	Federung vorne	Öldruckstoßdämpfer verstellbar
Motorart	1Zylinder 4-Takt Motor mit Luftkühlung	Federung hinten	Öldruckstoßdämpfer verstellbar
Hubraum	124 ccm	Reifengröße	VR 16 x 8-7 HR 18 x 9,5-8
Bohrung	52,4 x 57,8 mm	VR – Bremse	Trommelbremse
Verdichtung	9.1 : 1	HR – Bremse	zentrale Scheibenbremse
Max. Drehmoment	8,2 Nm / 4500 rpm	Schalldämpfer	mit Katalysator EURO II

Ausstattung

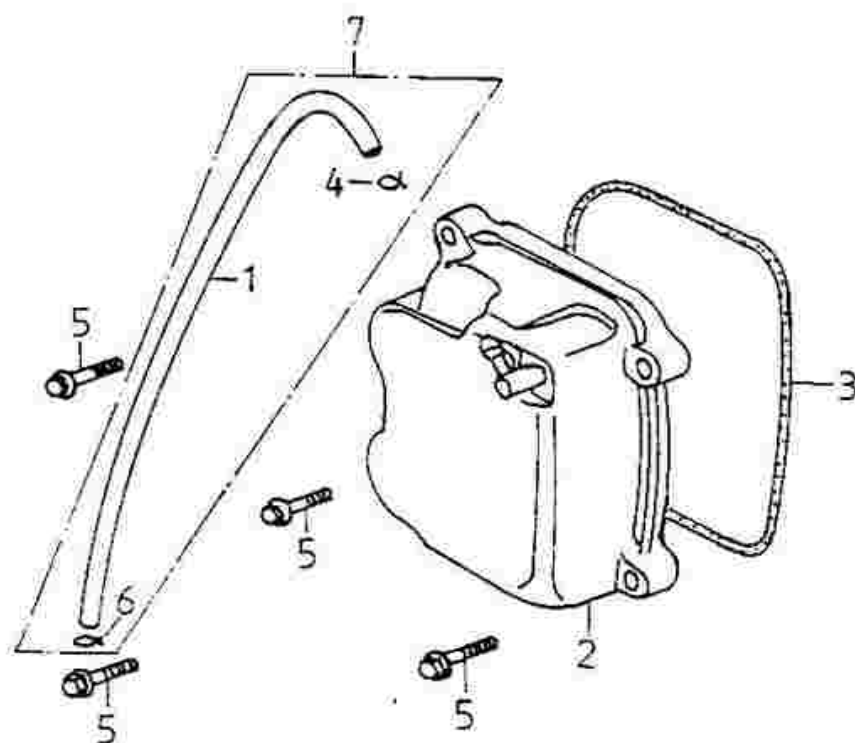
Scheinwerfer mit Fern- und Abblendlicht 12 V, Blinkanlage,
2 Rückspiegel, 12 Volt Batterie, Tachometer, Zulassung für 1 Person,
Gepäckträger Heck

Sonstiges

Zulassung für den Straßenverkehr (Europazulassung)
Fahrerlaubnis Führerscheinklasse B oder einer Bundesdeutschen (alten,
d.h. vor dem 31.12.1998 erteilten) Fahrerlaubnis der Klasse 2 oder 3 bzw.
einer (älteren) DDR – Fahrerlaubnis der Klasse B o. C.

Die Beschreibungen des Fahrzeuges sind unverbindlich. Konstruktions- und Ausführungsänderungen vorbehalten. Farbabweichungen sind drucktechnisch bedingt.

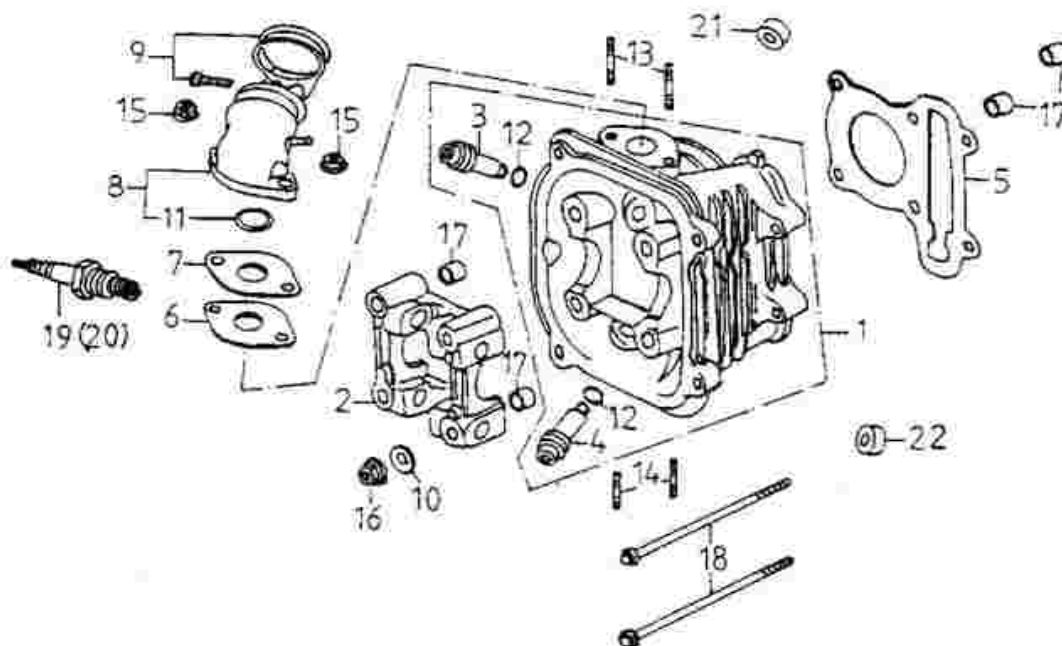
ERING GmbH • Ringstraße 1 • D-84030 Ergolding
Tel. +49(0)871-7604-0 • Fax +49(0)871-7604-10
E-Mail: ering.gmbh@t-online.de • Internet: <http://www.ering.de>



Assembly No.:193-02

CYLINDER HEAD COVER

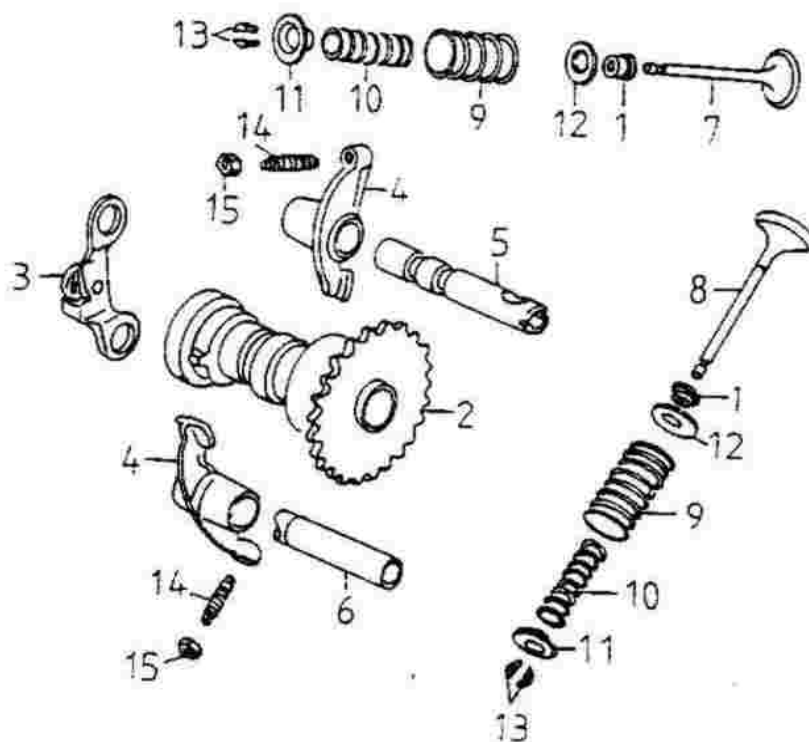
No.	Parts No.	Q'ty	Parts Name	Specification
1	11211-120-000	1	BREATHER TUBE	6*8.5
2	12310-120-000	1	CYLINDER HEAD COVER ASS'Y	
3	12391-120-000	1	HEAD COVER GASKET	
4	94510-09000	1	CLIP	9*1
5	96000-06025-08	4	HEX WASHER FACE BOLT	6*25
6	94510-12000	1	CLIP	12mm
7	11210-120-000	1	BREATHER TUBE ASS'Y	



Assembly No.:193-03

CYLINDER HEAD

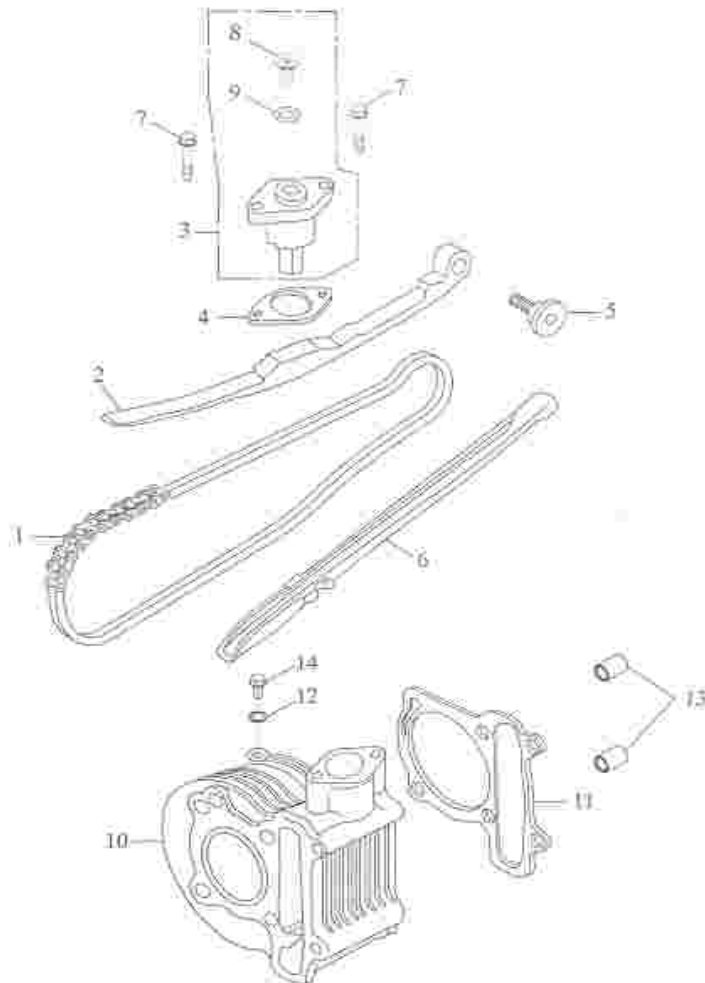
No.	Parts No.	Q'ty	Parts Name	Specification
1	12201-120-000	1	CYLINDER HEAD	
2	12211-120-000	1	CAMSHAFT HOLDER	
3	12204-120-000	1	IN. GUIDE VALVE	
4	12206-120-000	1	EX. GUIDE VALVE	
5	12251-120-000	1	CYLINDER HEAD GASKET	
6	16229-120-000	1	CARBURETOR INSULATOR GASKET	
7	16213-120-000	1	CARBURETOR INSULATOR	
8	17100-120-000	1	INAKE MAINFOLD	
9	14111-120-000	1	BAND INSULATOR	
10	94101-0818023	4	COPPER PLAIN WASHER	8*18*2.3
11	91327-120-000	1	OIL-RING	27*2
12	91309-120-00A	1	OIL-RING	9.5*1.6
13	91001-06028	2	STUD BOLT	6*28
14	91001-06062	2	STUD BOLT	6*62
15	94050-06000	2	HEX FLANGE NUT WITH SERRATION	6mm
16	94050-08000	4	HEX FLANGE NUT WITH SERRATION	8mm
17	94301-10160	4	DOWEL PIN	10*16
18	96000-06100-08	2	HEX WASHER FACE BOLT	6*100
19	98076-120-000	1	SPARK PLUG	C7HSA
20	98076-120-00A	1	ANTI-RESISTANCE SPARK PLUG	CR7HSA
21	12225-120-000	1	INTAKE VALVE SET	
22	12226-120-000	1	EXHAUST VALVE SET	



Assembly No.:193-04

CAMSHAFT.VALVE

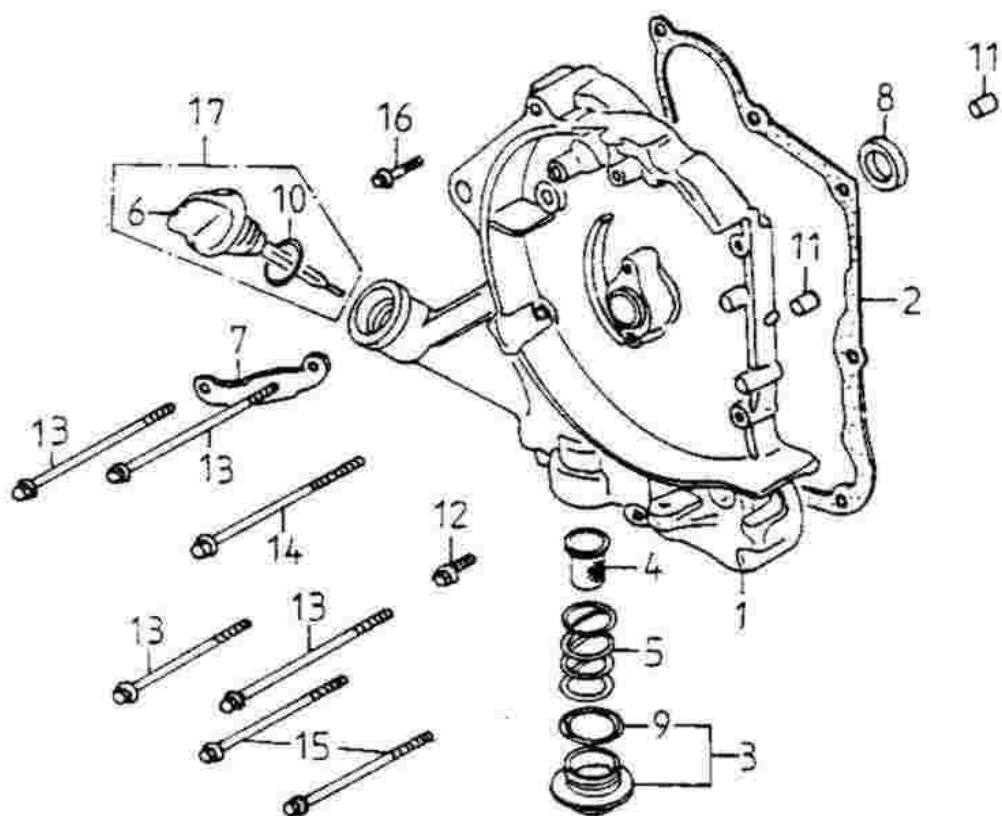
No.	Parts No.	Q'ty	Parts Name	Specification
1	12209-120-000	2	VALVE STEM SEAL	
2	14400-120-000	1	CAMSHAFT COMP	
3	14456-120-000	1	PLATE COMP STOPPER	
4	14431-120-000	2	ARM VALVE ROCKER	
5	14452-120-000	1	SHAFT COMP IN. ROCKER ARM	
6	14453-120-000	1	SHAFT EX. ROCKER ARM	
7	14711-120-000	1	IN. VALVE	
8	14721-120-000	1	EX. VALVE	
9	14751-120-000	2	VALVE OUTER SPRING	
10	14761-120-000	2	VALVE INNER SPRING	
11	14771-120-000	2	VALVE SPRING RETAINER	
12	14775-120-000	2	SEAT VALVE SPRING OUTER	
13	14781-120-000	4	COTTER VALVE	
14	90012-120-000	2	VALVE GAP ADJUSTING SCREW	
15	90206-120-000	2	VALVE GAP ADJUSTING NUT	



Assembly No.:193-05

CAM CHAIN.TENSIONER

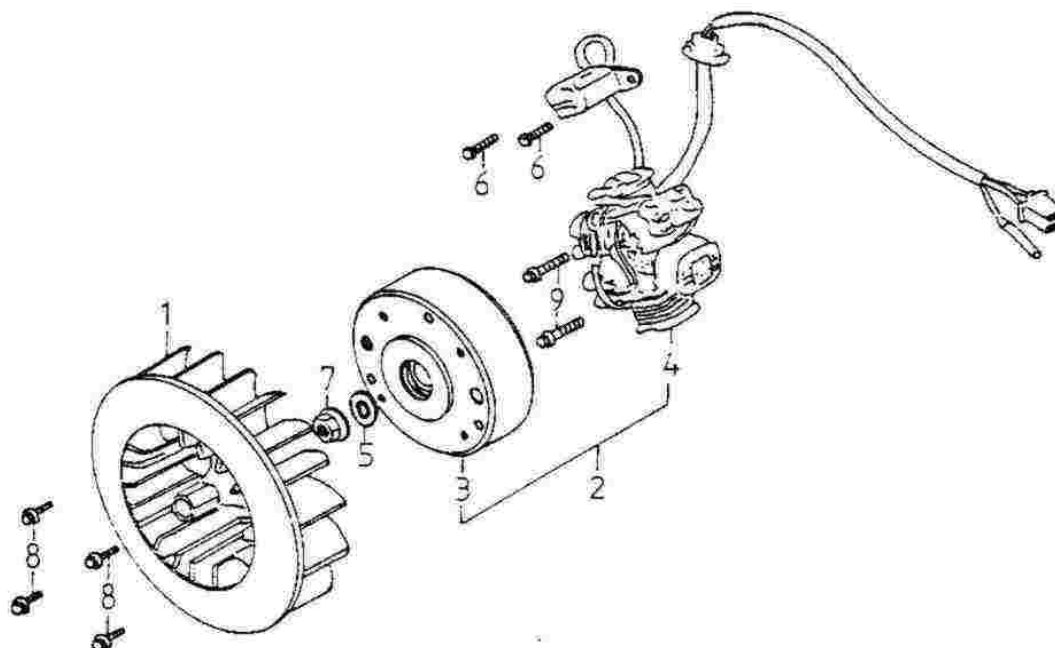
No.	Parts No.	Q'ty	Parts Name	Specification
1	14401-120-000	1	CHAIN CAM	
2	14550-120-000	1	CAM CHAIN TENSIONER	
3	14521-120-000	1	TENSIONER LIFTER ASS'Y	
4	14523-120-000	1	GASKET,TENSIONER LIFTER	
5	14535-120-000	1	PIVOT,CAM CHAIN TENSIONER	
6	14500-120-000	1	CAM CHAIN,GUIDE	
7	96000-06022-08	2	HEX WASHER FACE BOLT	6*22
8	93000-06006	1	ROUND PHILLIPS BOLT	6*6
9	91309-120-000	1	OIL-RING	9.5*1.5
10	12101-120-000	1	CYLINDER	
11	12191-120-000	1	CYLINDER GASKET	
12	94101-0612010	1	COPPER PLAIN WASHER	6.5*12*1
13	94301-10160	2	DOWEL PIN	10*16
14	96000-06012-10	1	HEX WASHER FACE BOLT	6*12



Assembly No.:193-06

RIGHT CRANKCASE COVER

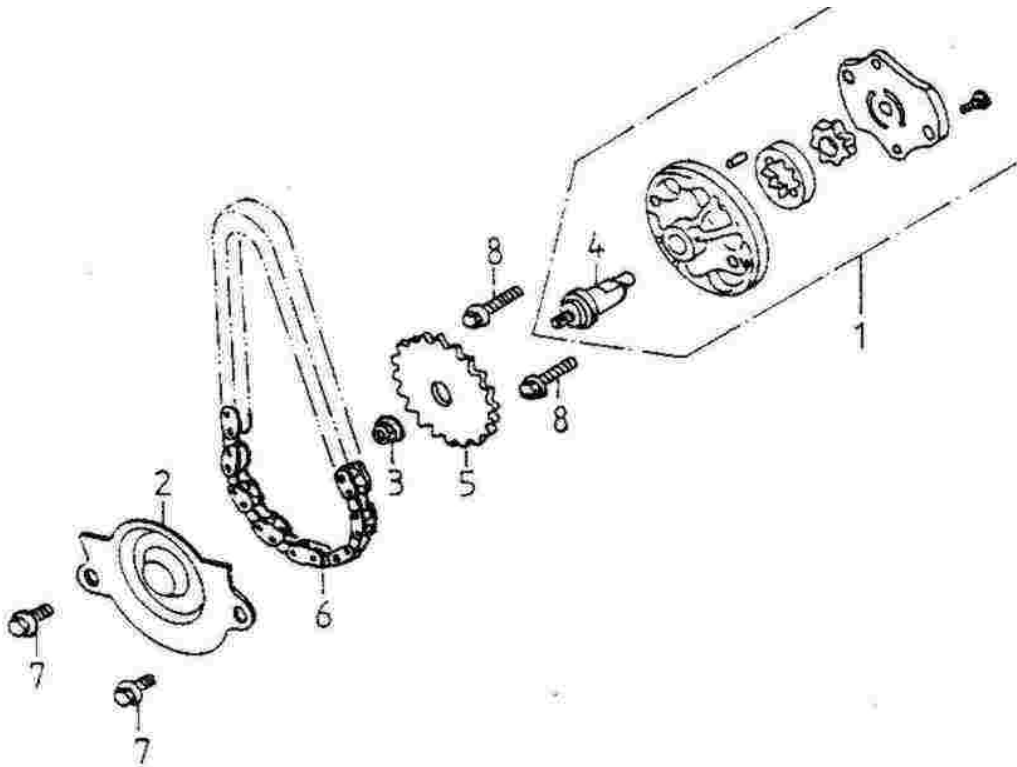
No.	Parts No.	Q'ty	Parts Name	Specification
1	11330-168-000	1	RIGHT CRANKCASE COVER	
2	11393-120-000	1	GASKET,R. CRANKCASE COVER	
3	12361-120-000	1	CAP ASS'Y	
4	15421-120-000	1	OIL FILTER SCREEN	
5	15426-120-000	1	OIL FILTER SPRING	
6	15650-120-000	1	OIL LEVEL GAUGE	
7	32961-120-000	1	CLAMP,A.C.GENERATOR CORD	
8	96500-19305	1	OIL SEAL	19.8*30*5
9	91330-120-000	1	OIL RING	30.8mm
10	91318-108-000	1	OIL RING	18*3
11	94301-08140	2	DOWEL PIN	6.3*8*14
12	96000-06032-08	1	HEX WASHER FACE BOLT	6*32
13	96000-06095-08	4	HEX WASHER FACE BOLT	6*95
14	96000-06100-08	1	HEX WASHER FACE BOLT	6*100
15	96000-06110-08	2	HEX WASHER FACE BOLT	6*110
16	96000-06040-08	1	HEX WASHER FACE BOLT	6*40
17	1565A-120-000	1	OIL GAUGE ASS'Y	



Assembly No.:193-07

GENERATOR

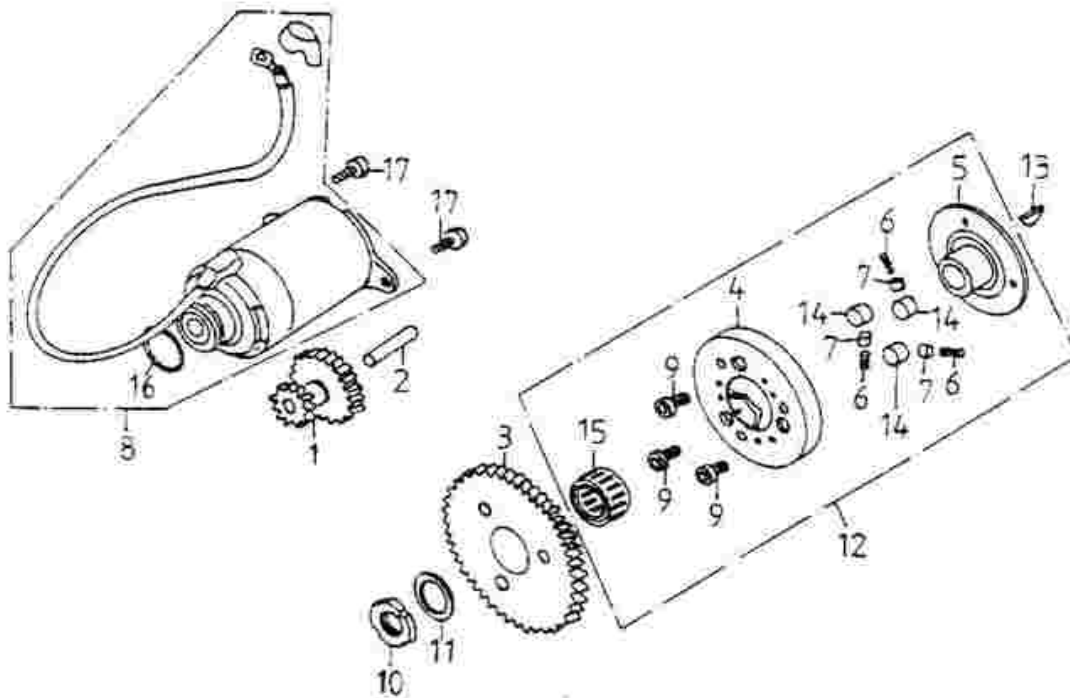
No.	Parts No.	Q'ty	Parts Name	Specification
1	19510-120-000	1	FAN	
2	31100-120-000	1	GENERATOR ASS'Y(AT-125G)	
3	31110-120-000	1	GENERATOR FACE FLYWHEEL	
4	31120-120-000	1	STATOR COMP	
5	94101-1225023	1	PLAIN WASHER	12*25*2.3
6	92000-05012	2	HEX BOLT	5*12
7	94050-12000	1	HEX FLANGE NUT WITH SERRATION	12mm
8	96000-06018-08	4	HEX WASHER FACE BOLT	6*18
9	96000-06020-08	2	HEX WASHER FACE BOLT	6*20



Assembly No.:193-08

OIL PUMP

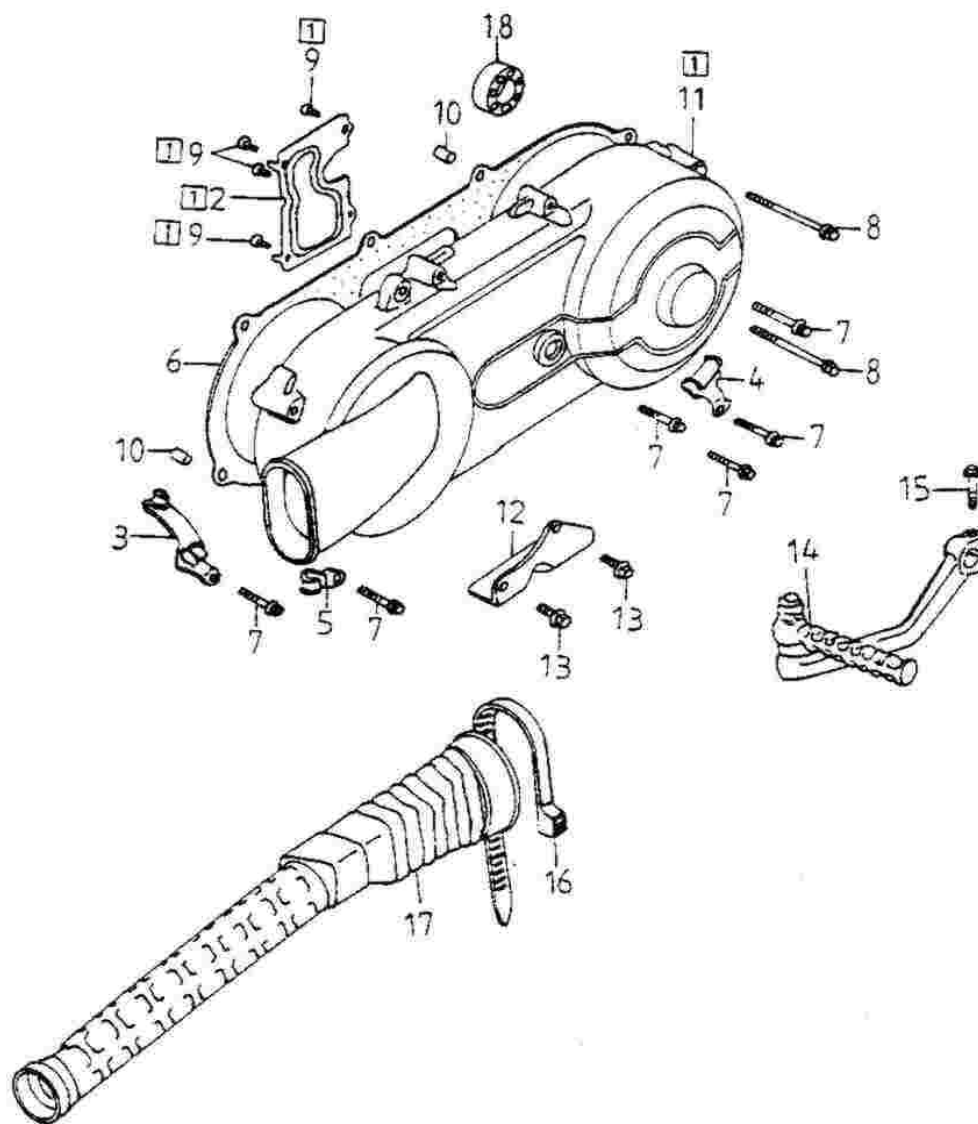
No.	Parts No.	Q'ty	Parts Name	Specification
1	15100-120-000	1	OIL PUMP	
2	15711-120-000	1	SEPARATOR A OIL	
3	94050-06000	1	HEX FLANGE NUT WITH SERRATION	6mm
4	15131-120-000	1	OIL PUMP PROIMARY AXLE	
5	15150-120-000	1	OIL PUMP DRIVE GEAR	
6	15141-120-000	1	CHAIN OIL PUMP	
7	96000-06012-08	2	HEX WASHER FACE BOLT	6*12
8	96000-06025-08	2	HEX WASHER FACE BOLT	6*25



Assembly No.:193-09

STARTING MOTOR

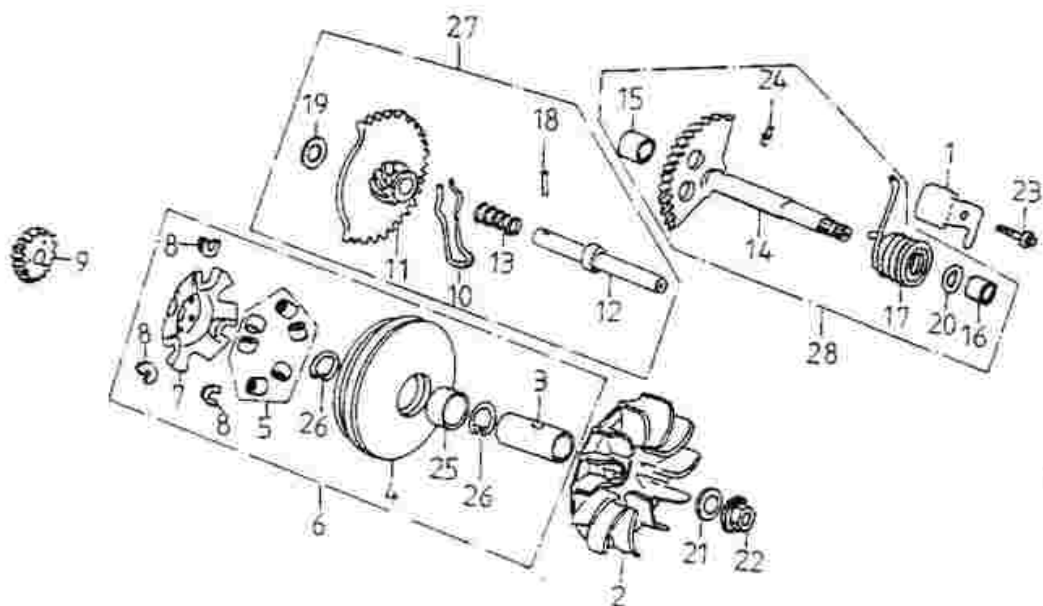
No.	Parts No.	Q'ty	Parts Name	Specification
1	28422-120-000	1	GEAR STARTER REDUCTION	
2	96300-100460	1	SHAFT STARTER REDUCTION GEAR	
3	28220-120-000	1	GEAR COMP STARTING CLUTCH	
4	28120-120-000	1	CLUTCH COVER COMP	
5	28125-120-000	1	FLANGE STARTING CLUTCH	
6	28413-120-000	3	CLUTCH SPRING	
7	28412-120-000	3	CLUTCH GUIDER	
8	31200-120-000	1	STARTING MOTOR ASS'Y	
9	91000-06012	3	HEX SOCKET BOLT	6*12
10	94071-22000	1	NUT LOCK	22mm
11	94101-2231025	1	PLAIN WASHER	22*31*2.5
12	28410-120-000	1	STARTER CLUTCH ASS'Y	
13	90471-101-000	1	SEMICYCLE KEY	25*4*14
14	28411-120-000	3	STARTER CLUTCH ROLLER	10*10
15	96200-283217	1	NEEDLE BEARING	28*32*17
16	91324-120-000	1	OIL RIGE	24.4*3.1
17	96000-06016-08	2	HEX WASHER FACE BOLT	6*16



Assembly No.:19310

LEFT CRANKCASE COVER

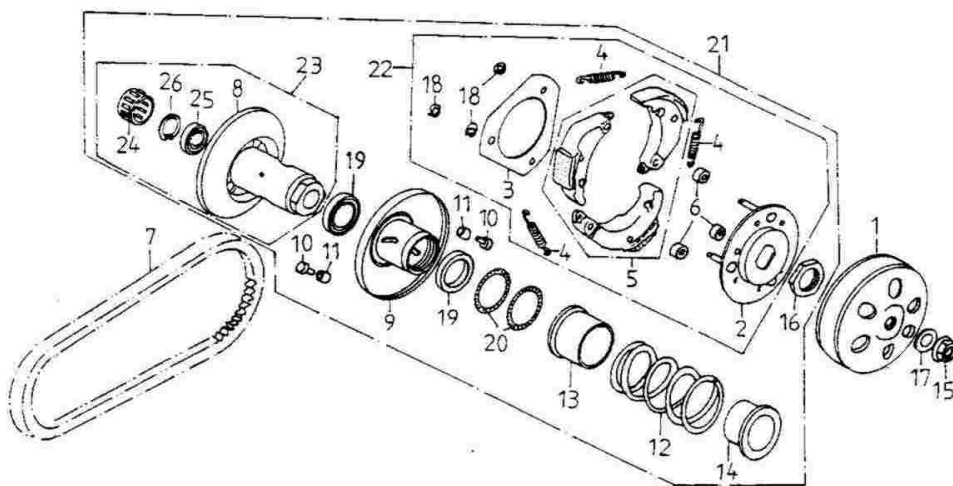
No.	Parts No.	Q'ty	Parts Name	Specification
1	11340-121-000	1	COVER COMP L	
2	11342-120-000	1	PLATE L COVER	
3	11381-120-000	1	CLAMPER THROTTLE CABLE	
4	11352-120-000	1	CLAMPER BRAKE CABLE	
5	11351-120-00A	1	CLAMP	
6	11359-121-000	1	GASKET L COVER	
7	96000-06040-08	6	HEX WASHER FACE BOLT	6*40
8	96000-06065-08	2	HEX WASHER FACE BOLT	6*65
9	93905-04008	4	PAN PHILLIPS SCREW	4*8
10	94301-08140	2	DOWEL PIN	8*14
11	11341-121-000	1	COVER L	
12	50504-120-000	1	STAY MAIN STAND STOPPER	
13	96000-06012	2	HEX WASHER FACE BOLT	6*12
14	28300-120-000	1	ARM ASS'Y KICK STARTER	
15	96000-06022	1	HEX WASHER FACE BOLT	6*22
16	90669-101-00B	1	RUBBER STRAP	7.5*250m/m
17	11345-120-000	1	DUCT L. CRANKCASE COVER	
18	96100-6200Z	1	RADIAL BALL BEARING	6200Z



Assembly No.:193-11

DRIVE FACE

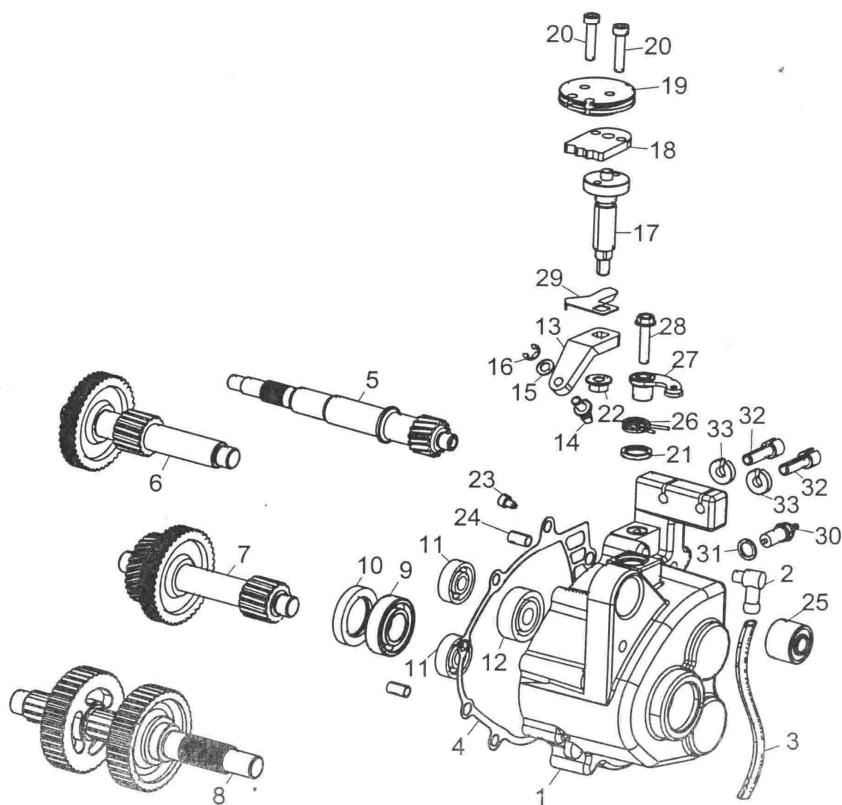
No.	Parts No.	Q'ty	Parts Name	Specification
1	11207-120-000	1	PLATE KICK RETURN STOPPER	
2	22102-120-000	1	FACE DRIVE	
3	96401-152451	1	BOSS DRIVE FACE	
4	22110-120-000	1	FACE COMP MOVABLE DRIVE	
5	22121-120-000	6	ROLLER COMP WEIGHT	
6	22103-120-000	1	FACE ASS'Y MOVABLE DRIVE	
7	22131-120-000	1	PLATE RAMP	
8	22132-120-000	3	SIDE PIECE	
9	28211-120-000	1	GEAR KICK DRIVE	20T
10	28223-120-000	1	SPRING STARTER GEAR FRICTION	
11	28230-120-000	1	GEAR COMP STARTER IDLE	13T/49T
12	28241-120-000	1	SHAFT STARTER IDLE	
13	28242-120-000	1	SPRING STARTER IDLE	
14	28250-120-000	1	STARTER SPINDLE COMP	
15	96401-121612	1	BUSH	12*16*12
16	96401-141816	1	STARTER SPINDLE BUSH B	14*18*16
17	28281-120-000	1	STARTER SPRING	
18	28282-120-000	1	SPECIAL PIN	3*8.5
19	94101-1222016	1	PLAIN WASHER	12.6*22.3*1.6
20	94101-1422012	1	PLAIN WASHER	14*22*1.2
21	94101-1222015	1	PLAIN WASHER	12*22*1.5
22	94050-12000	1	HEX FLANGE NUT WITH SERRATION	12mm
23	96000-06014-08	1	HEX WASHER FACE BOLT	6*14
24	96220-30085	1	ROLLER	3*8.5
25	96401-242830	1	BUSH	24*28*30
26	94512-2800R	2	INTERNAL CIR CLIP	RTW-28
27	28231-120-000	1	STARTER IDLE GEAR ASS'Y	
28	28251-120-000	1	STARTER SPINDLE ASS'Y	



Assembly No.:193-12

DRIVEN FACE

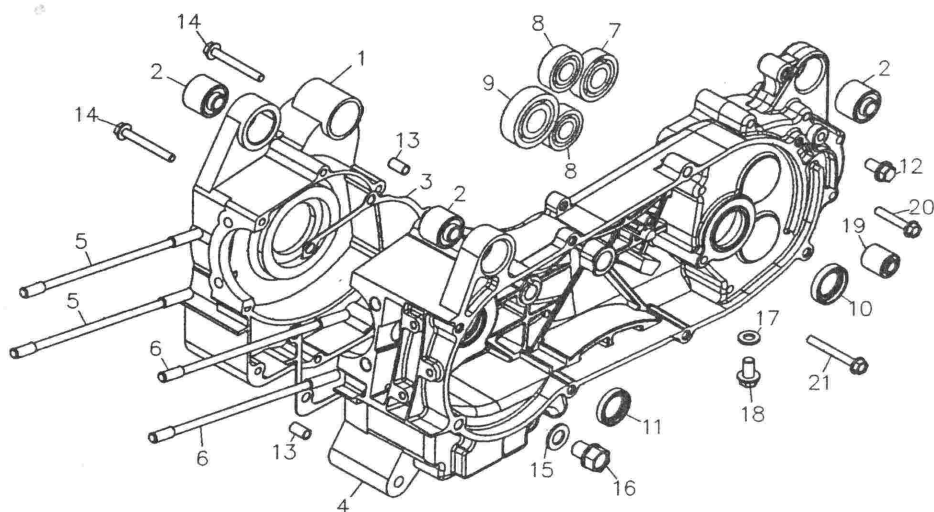
No.	Parts No.	Q'ty	Parts Name	Specification
1	22100-120-000	1	CLUTCH COVER COMP	
2	22350-120-000	1	PLATE COMP DRIVE	
3	22351-120-000	1	PLATE CLUTCH SIDE	
4	22401-120-000	3	SPRING CLUTCH	
5	22535-120-000	3	CLUTCH WEIGHT SET	
6	22804-120-000	3	RUBBER CLUTCH DAMPER	
7	23100-120-000	1	BELT DRIVE	743*20*30
8	23210-120-000	1	FACE ASS'Y DRIVEN	
9	23220-120-000	1	SECONDARY SLIDING SLOT WHEEL	
10	23225-120-000	3	GUIDE PIN	
11	23226-120-000	3	GUIDE PIN	
12	23233-120-000	1	COMPRESSION SPRING	
13	23237-120-000	1	SECONDARY SPRING SEAT	
14	23238-120-000	1	COLLER SPRING	
15	90201-120-000	1	NUT COMPRESSOR FLANGE	12mm
16	90202-120-000	1	NUT SPECIAL	28mm
17	94101-1229025	1	PLAIN WASHER	12*29*2.5
18	94511-0700E	3	EXTERNAL CIR CLIP	ETW-7
19	96500-34414	2	OIL SEAL	34*41*4
20	91336-104-000	2	OIL RING	36*2
21	22000-120-000	1	DRIVE FACE ASS'Y (B)	
22	22001-120-000	1	PLATE ASS'Y DRIVE	
23	23200-120-000	1	SECONDARY FIX SLOT WHEEL	
24	96200-202918	1	NEEDLE BEARING	20*29*18
25	96100-6902U	1	RADIAL BALL BEARING	6902U
26	94512-280IR	1	INTERNAL CIR CLIP	IRTW-28



Assembly No.:193-13

TRANSMISSION

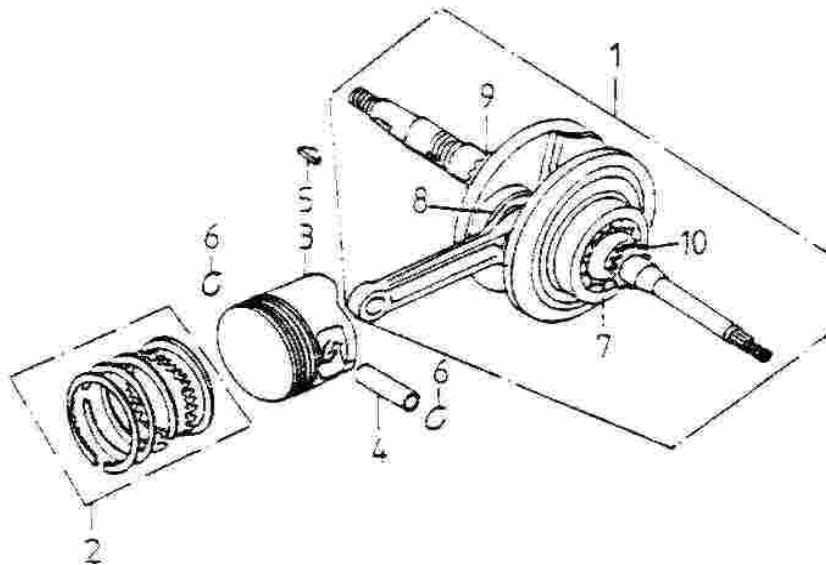
No.	Parts No.	Q'ty	Parts Name	Specification
1	21301-183-000	1	MISSION COVER	
2	16610-104-000	1	BREATHER HOSE HEAD	
3	16615-104-000	1	BREATHER HOSE	
4	21395-183-000	1	MISSION COVER GASKET	
5	23411-183-000	1	DRIVE SHAFT	
6	23440-183-000	1	REVERSE IDLE GEAR ASS'Y	
7	23420-183-000	1	IDLE GEAR ASS'Y	
8	23430-183-000	1	FINAL GEAR COMP	
9	96100-6004ZZ	1	RADIAL BALL BEARING	6004ZZCM/2A-T0
10	96500-27427	1	OIL SEAL	27*42*7
11	96100-62020	2	RADIAL BALL BEARING	6202
12	96100-TMB301	1	RADIAL BALL BEARING	TMB301
13	24231-183-000	1	GEAR SHIFT FORK	
14	24232-183-000	1	GEAR SHIFT FORK GUIDE SHAFT	
15	94101-0612010	1	COPPER PLAIN WASHER	6.5*12*1
16	94511-0500E	1	EXTERNAL CIR CLIP	ETW-5
17	24631-183-000	1	GEAR SHIFT FORK SHAFT	
18	24630-183-000	1	GEAR SHIFT ARM	
19	24633-193-000	1		
20	91000-06028	2	HEX SOCKET BOLT	6*28
21	96500-14203	1	OIL SEAL	
22	90350-08000	0	NYLON INSERT LOCK NUT	8mm
23	24632-183-000	1	DOWEL BOLT	
24	94301-08140	2	DOWEL PIN	6.3*8*14
25	96400-102820	1	BUSH, ENGINE HANGER RUBBER	10*28*22
26	24432-169-000	1	REVERSE SHIFT DRUM STOPPER SPRING	
27	24431-169-000	1	REVERSE SHIFT STOPPER COMP	
28	96000-06030-10B	1	HEX FLANGE BOLT	6*65
29	35753-183-000	1	SHIFT SWITCH PLATE	
30	35750-169-000	2	NEUTRAL SWITCH CONTACT ASS'Y	
31	94103-1115013	2	COPPER PLAIN WASHER	10.5*15*1.3
32	53191-168-000	2	LOCK BLOT	
33	53192-168-000	2	LOCK NUT	



Assembly No.:193-14

CRANKCASE

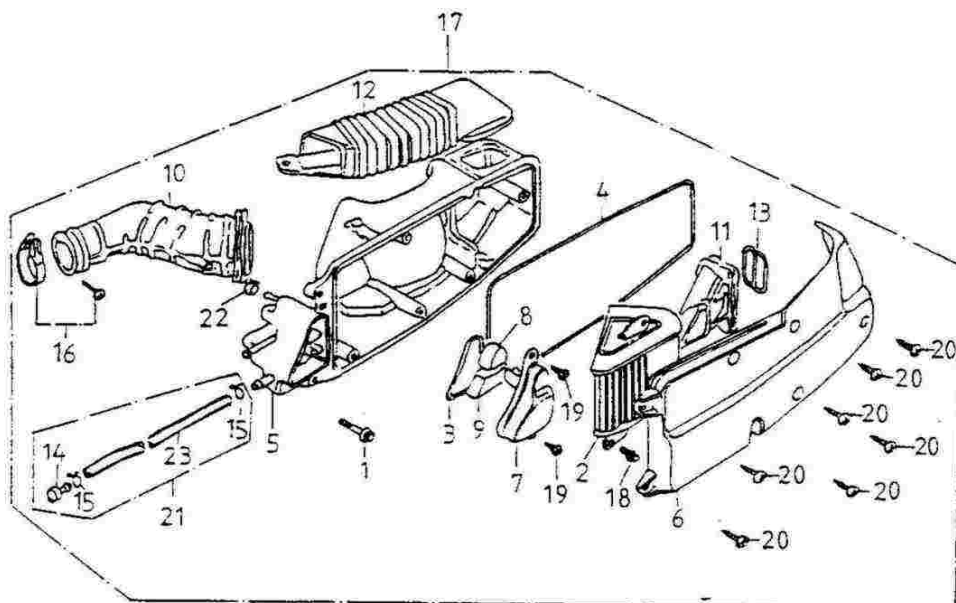
No.	Parts No.	Q'ty	Parts Name	Specification	
1	11101-121-000		1 RIGHT CRANKCASE		
2	96400-102820		3 BUSH, ENGINE HANGER RUBBER	10*28*22	
3	11191-120-000		1 CRANKCASE GASKET		
4	11201-183-000		1 LEFT CRANKCASE		
5	91001-08181		2 STUD BOLT	8*187.5	
6	91001-08187		2 STUD BOLT	8*195.5	
7	96100-62030		1 RADIAL BALL BEARING		6203
8	96100-62020		2 RADIAL BALL BEARING		6202
9	96100-62040		1 RADIAL BALL BEARING	6204C3	
10	96500-20326		1 OIL SEAL	20*32*6	
11	96500-19305		1 OIL SEAL	19.8*30*5	
12	96000-08012-12B		1 HEX WASHER FACE BOLT	8*12	
13	94301-08140		2 DOWEL PIN	6.3*8*14	
14	96000-06050-8B		2 HEX WASHER FACE BOLT	6*50	
15	94104-1221320		1 PLAIN WASHER	12*21.3*2	
16	96000-12015-14		1 HEX WASHER FACE BOLT	12*15	
17	94104-0816020		1 PLAIN WASHER	8*16*2	
18	96000-08012-10		1 HEX WASHER FACE BOLT	8*12	
19	96400-082024		1 ROBRER	8*20*24	
20	96000-06065-10B		4 HEX FLANGE BOLT	6*65	
21	96000-06070-10B		3 HEX WASHER FACE BOLT	6*70	



Assembly No.:193-15

CRANK SHAFT.PISTON

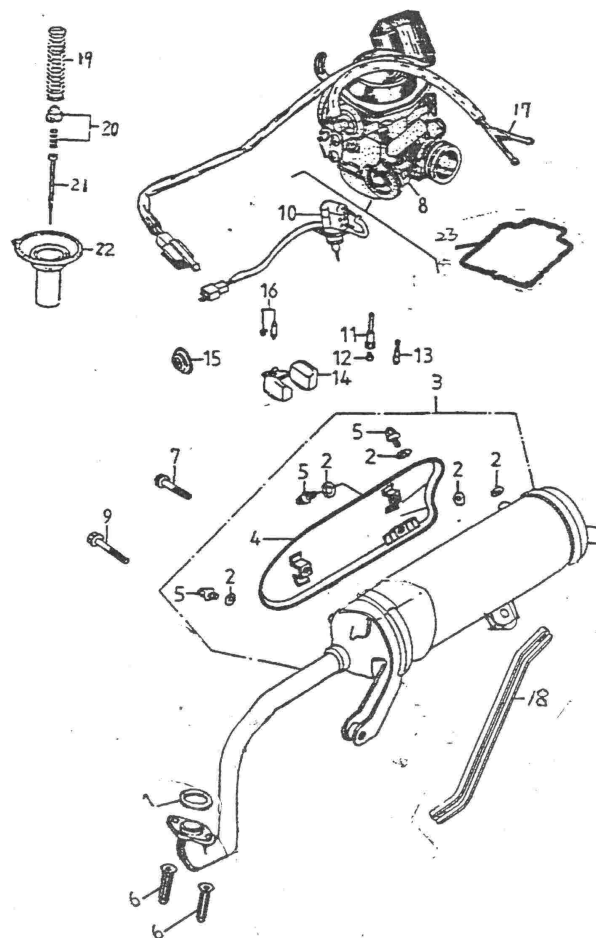
No.	Parts No.	Q'ty	Parts Name	Specification
1	13000-120-000	1	CRANKSHAFT ASS'Y	
2	13011-120-000	1	PISTON RING SET	
3	13100-120-000	1	PISTON	
4	13111-120-000	1	PISTON PIN	11.5*15*41.5
5	90471-101-000	1	SEMICYCLE KEY	25*4*14
6	13115-120-000	2	CLIP PISTON PIN	15*17*1.0
7	TMSC04A86CS12	2	BEARING	
8	96200-283313	1	NEDDLE BEARING	
9	14311-120-000	1	TIMING GEAR	
10	14322-120-000	1	CAM TRANSMISSION GEAR	



Assembly No.:193-16

AIR CLEANER

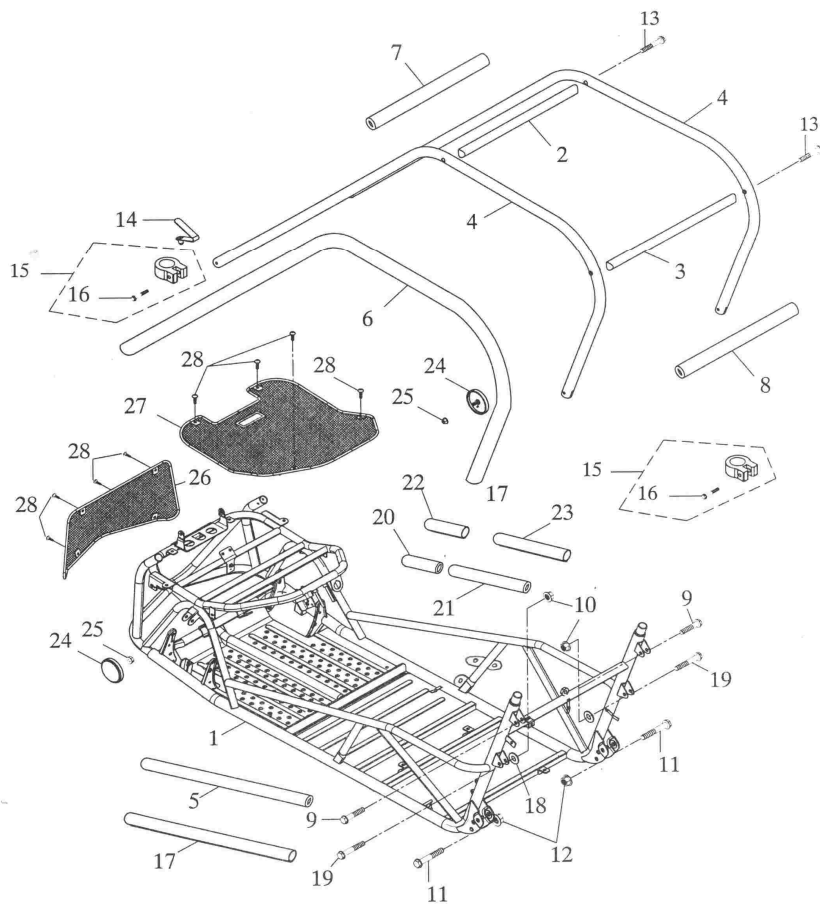
No.	Parts No.	Q'ty	Parts Name	Specification
1	96000-06028-08		2 HEX WASHER FACE BOLT	6*28
2	17205-120-000		1 AIR CLEANER ELEMENT	
3	17212-120-000		1 OIL CATCH SEAL	
4	17212-120-00A		1 SEAL OIL CLEANER COVER	
5	17206-120-000		1 AIR CLEANER BASE	
6	17207-120-000		1 AIR CLEANER COVER	
7	17232-120-000		1 OIL CATCH COVER	
8	17234-120-000		1 BREATHER FILTER	
9	17235-120-000		1 OIL CATCH FILTER	
10	17253-120-000		1 AIR CLEANER JOINT	
11	17255-120-000		1 AIR INLET DUCT	
12	17257-120-000		1 DUCT AIR CLEANER CASE	
13	17258-120-000		1 IN DUCT SPRING	
14	17370-120-000		1 BREATHER TUBE PLUG	
15	94510-12000		2 CLIP	12mm
16	14110-120-000		1 INTAKE HOSE CLAMP	
17	17200-120-000		1 AIR CLEANER ASS'Y	
18	93500-05010		2 PAN PHILLIPS BOLT	5*10
19	93903-04012		2 TAPPING SCREW TRUSS HEAD PHILLIPS	4*12
20	93903-05020		7 TAPPING SCREW TRUSS HEAD PHILLIPS	5*20
21	17360-120-000		1 DRAIN TUBE ASS'Y	
22	94509-09000		1 CLAMP	
23	94400-08012		1 TUBE	8*12*240



Assembly No.:193-17A

EXHANST MUFFLER, CARBURETOR

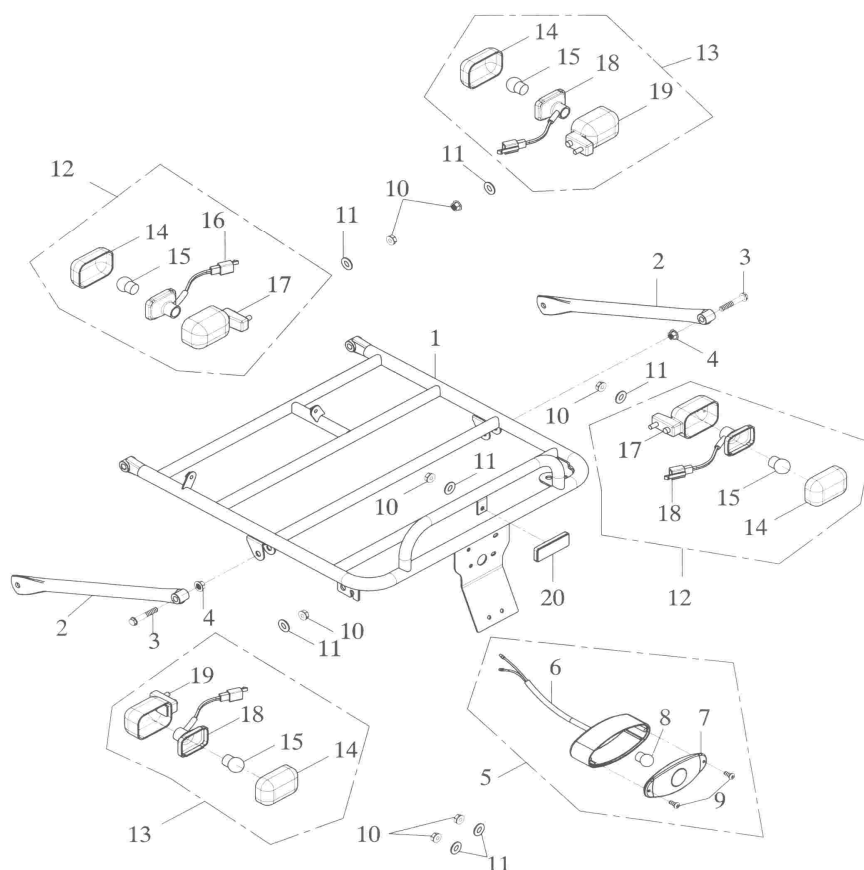
No.	Parts No.	Q'ty	Parts Name	Specification
1	18291-101-000		1 EXHAUST PIPE GASKET	
2	94101-0612015		5 PAPER PLAIN WASHER	6*12*1.5
3	18300-168-00B		1 EXHAUST PIPE ASS'Y	
4	18301-121-000		1 PROTECTOR COMP MUFFLER	
5	96000-06010-08		3 HEX WASHER FACE BOLT	6*10
6	90301-06000		2 NUT CAP	6mm
7	96000-08032		1 HEX WASHER FACE BOLT	8*32
8	16100-120-0C0		1 CARBURETOR ASS'Y(WALBRO WVF)	NOZZLE #110
9	96000-08032		1 HEX WASHER FACE BOLT	8*32
10	17215-120-000		1 PLUNGER STARTER	
11	16105-120-000		1 NEEDLE NOZZLE	
12	16108-120-00B		1 MAIN NOZZLE	
13	16110-120-000		1 PILOT JET	#35
14	16118-120-000		1 FLOAT	
15	16048-120-000		1 PLUNGER FILM	
16	16117-120-000		1 NEEDLE VAVLE SET	
17	16139-120-000		1 3-WAY CONNECTOR	
18	18353-168-000		1 EXHAUST BRACKET	
19	16102-120-000		1 THROTTLE VALVE SPRING	
20	16037-120-000		1 VALVE PLATE SET	
21	16104-120-000		1 NEEDLE SET	
22	16103-120-000		1 VACUUM PISTON	
23	16106-120-000		1 FLOAT CHAMBER SEAL	



Assembly No.:193-18A

FRAME BODY

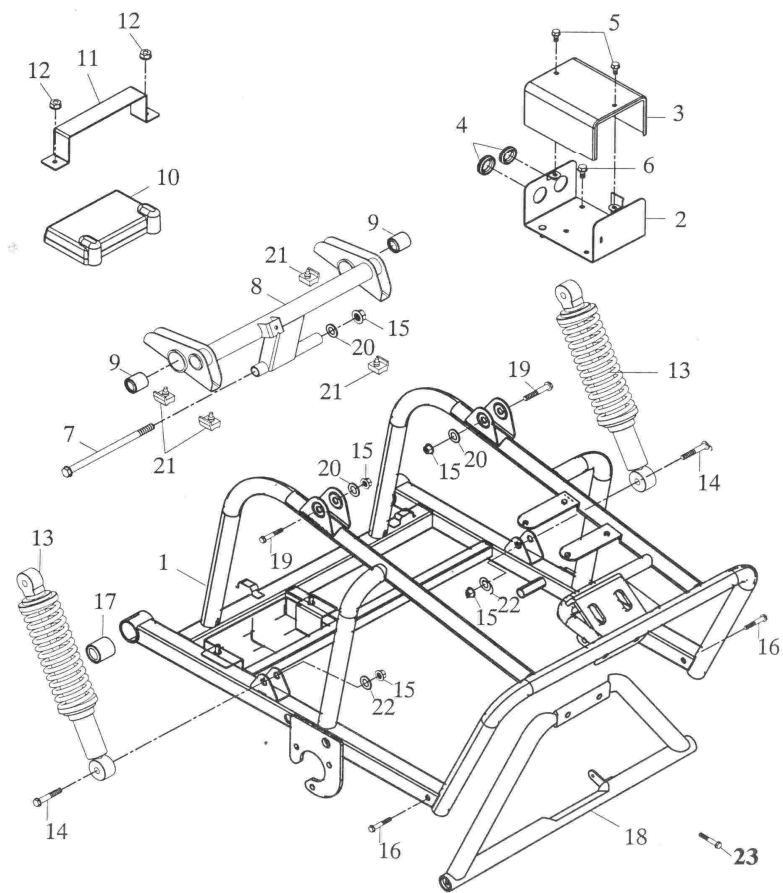
No.	Parts No.	Q'ty	Parts Name	Specification
1	50100-193-00B		1 FRAME COMP	
2	54353-168-000		1 ROLL CAGE F.BAR	£p25.4*2*480L
3	54354-168-000		1 ROLL CAGE R.BAR	£p25.4*2*500L
4	54218-168-001		2 ROLL CAGE BAR	£p28.6*1.4*2462
5	53135-168-000		1 BAR SPONGE	£p23 550MM
6	53132-168-001		2 BAR SPONGE	£p26 2500MM
7	53133-168-000		1 ROLL CAGE F.SPONGE	£p26 430MM
8	53134-168-000		1 ROLL CAGE R.SPOGE	£p26 470mm
9	96000-10040-14G		2 HEX FLANGE BOLT	M10*40
10	90350-10000		4 NYLON NUT	10mm*1.25
11	96000-12065-17		2 HEX WASHER FACE BOLT	12*65
12	94050-12000		2 HEX FLANGE NUT WITH SERRATION	12mm
13	96000-08055-12		4 HEX WASHER FACE BOLT	8*55
14	94513-07000		2 SPRING CLIP	7mm
15	94530-28000		4 CLIP	
16	91000-06025		4 HEX SOCKET BOLT	6*25
17	53136-168-000		1 SPONGE COVCER	£p23 550MM
18	94101-1022015		2 PLAIN WASHER	10*22*1.5
19	96000-10048-14G		2 HEX WASHER FACE BOLT	M10*48
20	53136-168-00B		1 SPONGE COVCER	£p23 150MM
21	53136-168-00A		1 SPONGE COVCER	£p23 350MM
22	53135-168-00B		1 BAR SPONGE	£p23 150MM
23	53135-168-00A		1 BAR SPONGE	£p23 350MM
24	33741-145-000YL		2 REFLECTOR(FRONT)	SAE JUTE 9823
25	94050-06000		2 HEX FLANGE NUT WITH SERRATION	6mm
26	50116-168-000		1 F.PROTECT NET	
27	50115-168-000		1 U.PROTECT NET	
28	93800-06015S		8 PAN PHILPS BOLT	6*15



Assembly No.:168-19A

LUGGAGE CARRIER, TALL LIGHT

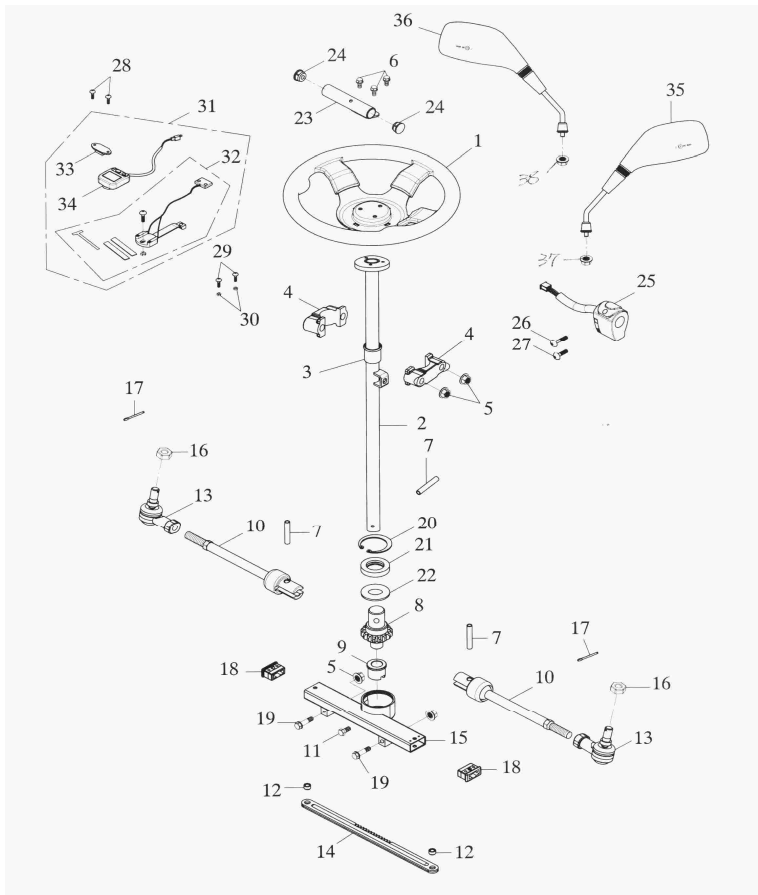
No.	Parts No.	Q'ty	Parts Name	Specification
1	81200-168-00B		1 LUGGAGE CARRIER	
2	81220-168-000		2 REAR LUGGAGE SUPPORT(rev.1)	
3	96000-10040-14G		2 HEX WASHER FACE BOLT	M10*40
4	90350-10000		2 NYLON NUT	10mm*1.25
5	33700-145-000		1 TAIL LIGHT ASS'Y (E-MARK,SAE)	
6	33711-145-000		1 REAR LIGHT BASE	
7	33702-145-000		1 TAIL LIGHT LENS	
8	34906-105-00A		1 TAIL LIGHT BULB (E-MARK)	12V 21/5W
9	93500-04010		2 PAN PHILLIPS BOLT	4*10
10	94050-06000		7 HEX FLANGE NUT WITH SERRATION	6mm
11	94101-0613010		7 PLAIN WASHER	6*13*1
12	33450-168-000		2 L.SIGNAL ASS'Y(E-MARK)	
13	33400-168-000		2 R.SIGNAL ASS'Y (E-MARK)	
14	33410-168-000		4 SIGNAL COVER	
15	34905-118-000		4 BULB (E-MARK)	12V/10W
16	33425-168-000		2 R.SIGNAL BULB SOCKET	
17	33401-168-000		2 R.SIGNAL SOCKET	
18	33435-168-000		2 L.SIGNAL BULB SOCKET	
19	33451-168-000		2 L.SIGNAL SOCKET	
20	33741-133-000		1 REFLECTOR (E-MARK,SAE)	JUTE9605-01A



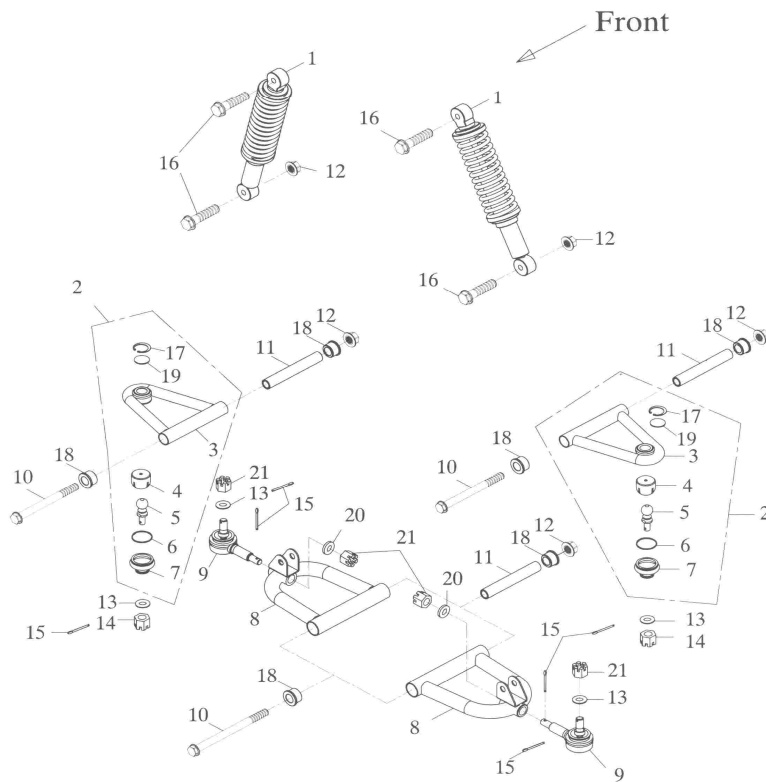
Assembly No.:193-20

ENGINE BRACKET ASS'Y

No.	Parts No.	Q'ty	Parts Name	Specification
	1 50350-193-000		1 ENGINE BRACKET ASS'Y	
	2 30210-168-000		1 ELECTRI COMP.BOX(REV.2)	
	3 30211-168-000		1 ELECTRI COMP.COVER(REV.2)	
	4 30401-168-000		2 RUBBER RING	
	5 96000-06012-10G		4 HEX WASHER FACE BOLT	6*12
	6 96000-06016-10G		4 HEX WASHER FACE BOLT	6*16
	7 96000-10184-12		1 HEX WASHER FACE BOLT	10*184
	8 50360-193-000		1 ENGINE BRACKET ASS'Y	
	9 96402-103030		2 RUBBER BUSHING	10*30*30
	10 31504-168-000		1 BATTERY COVER	
	11 31502-168-000		1 BATTERY FIXING PLATE	
	12 94050-06000		2 HEX FLANGE NUT WITH SERRATION	6mm
	13 52400-168-000		2 REAR CUSHION	300mm
	14 96000-10040-14G		2 HEX FLANGE BOLT	M10*40
	15 90350-10000G		5 NYLON NUT	M10*P1.25
	16 96000-08040-12G		2 HEX WASHER FACE BOLT	8*40
	17 96400-123037		2 RUBBER BUSH	12*30*37
	18 54355-193-000		1 R.CROSS BAR	25*25*3*468L
	19 96000-10055-14G		2 HEX WASHER FACE BOLT	10*55
	20 94101-1022020		3 PLAIN WASHER	10*22*2
	21 50524-128-000		4 MAIN STAND STOPPER RUBBER	
	22 94111-1017015		2 SPRING WASHER	10*17*1.5
	23 96000-08020-12G		2 HEX FLANGE BOLT	M8*20



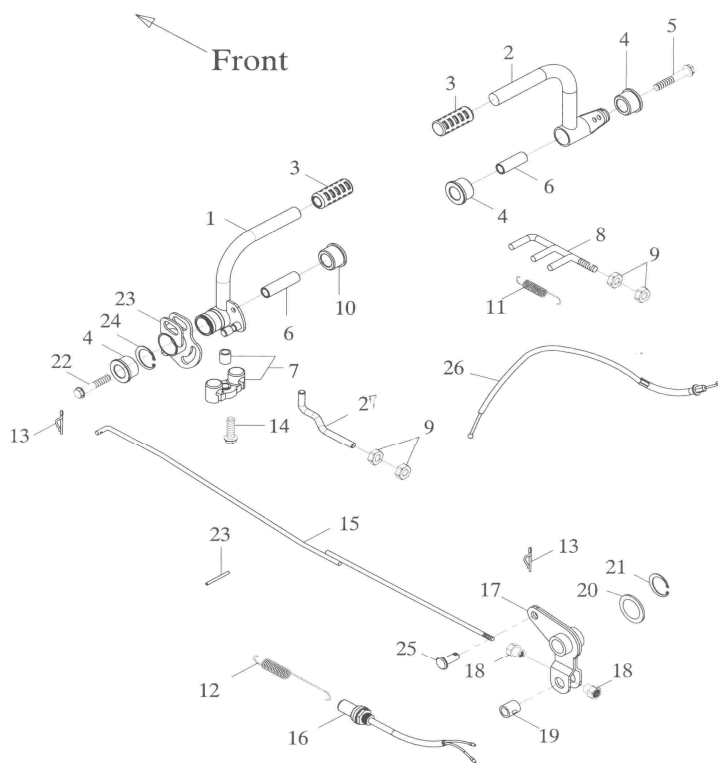
Assembly No.:193-21A			STEERING	
No.	Parts No.	Q'ty	Parts Name	Specification
1	53100-168-000		1 STEERING WHEEL	
2	51109-168-00C		1 STEERING SHAFT ASS'Y(REV.1)	
3	51114-145-000		2 PU BUSH	
4	51113-145-00A		2 STEERING SHAFT HOLDER	
5	94050-08000		4 HEX FLANGE NUT WITH SERRATION	8mm
6	96000-06012-10G		3 HEX WASHER FACE BOLT	6*12
7	94305-06240		3 SPLIT SPRING PIN	6*24
8	40620-168-000		1 STEERING DRIVE GEAR	
9	40621-168-000		1 BUSH(REV.1)	
10	44502-168-000		2 INNER TIE ROD(RACK ENDS)	AC»Ä/ÆQ
11	96000-05012-08		1 HEX BOLT	5*12
12	40612-168-000		2 SPACER	
13	44521-145-001		2 BALL JOINT,RIGHT THREAD	
14	40610-168-000		1 RACK	
15	40611-168-000		1 RACK COVER(REV.1)	
16	90350-10000G		2 NYLON NUT	M10*P1.25
17	94201-20190		2 COTTER PIN	2*19
18	51201-168-000		2 BUSH	
19	96000-08048-12G		2 HEX WASHER FACE BOLT	8*48
20	94512-4000R		1 INTERNAL CIR CLIP	RTW-40
21	96500-40257		1 OIL SEAL	40*25*7
22	54111-168-000		1 WASHER	26*39*1.5
23	35203-168-000		1 SWITCH BRACKET	
24	64330-145-000		2 FLOOR PANEL RUBBER CAP	
25	35200-168-00A		1 L.HANDLE SWITCH ASS'Y	
26	93500-05035		1 PAN PHILLIPS BOLT	5*35
27	93500-05025		1 PAN PHILLIPS BOLT	5*25
28	93701-04008		2 PAN FLAT HEAD PHILLIPS BOLT	4*8mm
29	93500-03008		2 PAN PHILLIPS BOLT	3*8
30	94001-03000		2 HEX NUT	3mm
31	37200-145-0A0		1 SPEEDOMETER ASS'Y(Digital)	N+æšřiĀK
32	37216-145-000		1 SPEEDOMETER HOLDER	½u%ø:110CM
33	37217-145-000		1 MAGNET	æè«¬
34	37220-145-0A0		1 SPEEDOMETER BODY(Digital)	12V©j¿O
35	88120-125-000		1 L.REAR VIEW MIRROR	
36	88110-125-000		1 R.REAR VIEW MIRROR	
37	94050-08000		1 HEX FLANGE NUT WITH SERRATION	8mm
38	94054-08000		1 HEX FLANGE NUT WITH SERRATION	8mm



Assembly No.:193-22

FRONT SUSPENSION

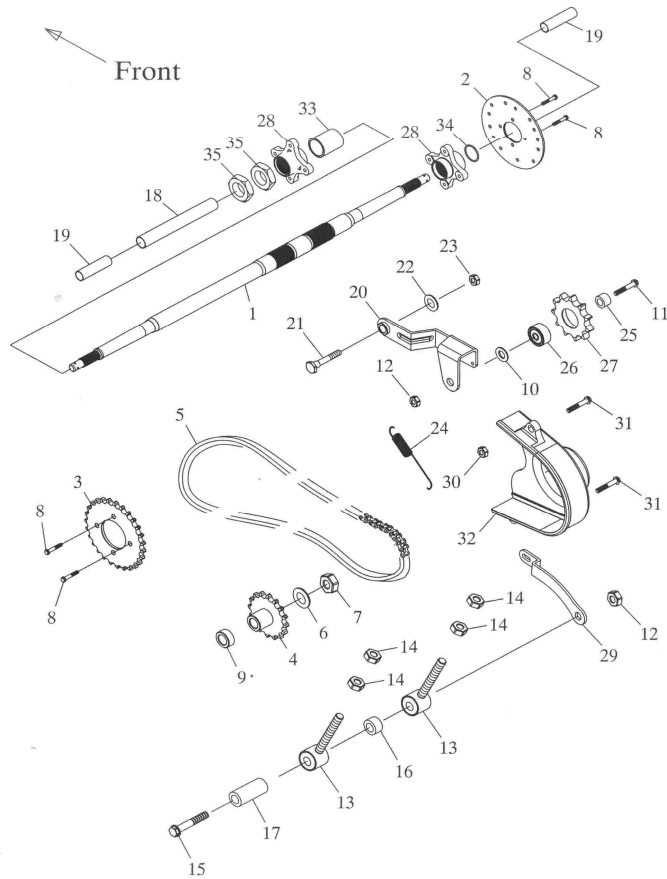
No.	Parts No.	Q'ty	Parts Name	Specification
1	51400-168-000	2	FRONT CUSHION	260mm
2	51214-168-000	2	UPPER A-ARM ASS'Y	
3	51210-168-000	2	UPPER A-ARM	
4	51211-168-000	2	BUSH	
5	51213-168-000	2	LINK BALL	
6	94510-31000	2	CLIP	
7	51212-168-000	2	DUST SEAL	
8	51200-168-000	2	LOWER OSCILLATION ARM	
9	51220-168-000	2	LINK BALL ASS'Y	
10	96000-10175-14	4	HEX WASHER FACE BOLT	10*179
11	51205-168-000	4	SUSPENSION ARM SPACER	
12	90350-10000G	8	NYLON NUT	M10*P1.25
13	94101-1020020	6	PLAIN WASHER	10*20*2
14	94052-10000-14	2	SCOTCH FLANGE NUT	10mm
15	94201-20190	6	COTTER PIN	2*19
16	96000-10040-14G	4	HEX WASHER FACE BOLT	M10*40
17	94512-2400R	2	INTERNAL CIR CLIP	RTW-24
18	51202-168-000	8	BUSH	
19	51215-168-000	2	WASHER	
20	94101-1222020	2	PLAIN WASHER	12*22*2
21	94051-12000-17	4	HEX, SLOTTED NUT	12mm



Assembly No.:193-23A

PEDAL SYSTEM

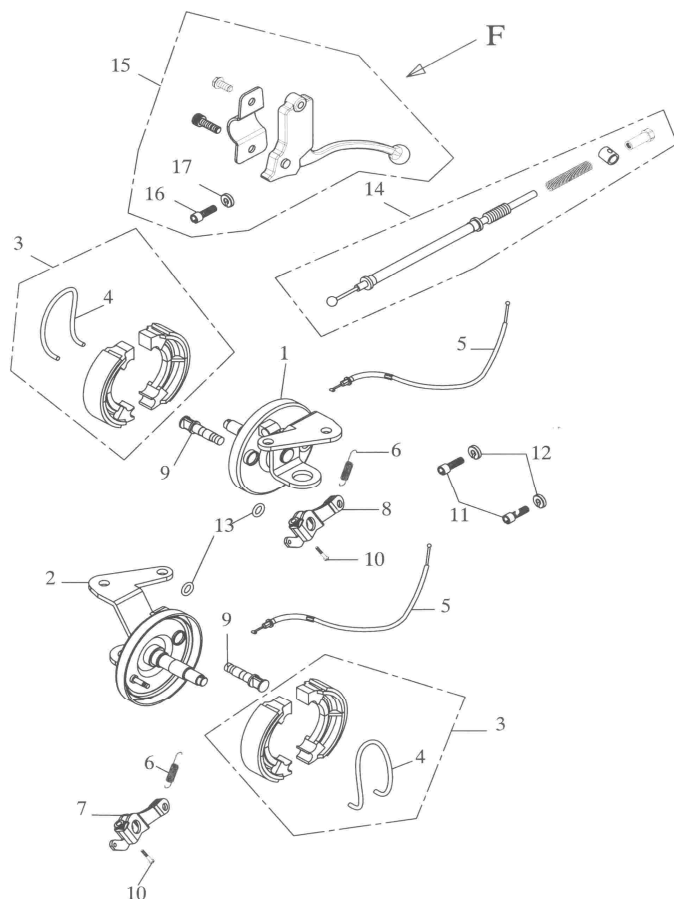
No.	Parts No.	Q'ty	Parts Name	Specification
1	46500-168-00B	1	BRAKE PEDAL COMP	
2	46600-168-000	1	ACCELERATOR PEDAL	
3	50710-168-000	2	PADEL RUBBER(REV.1)	
4	51202-168-000	4	BUSH	
5	96000-10060-14	1	HEX WASHER FACE BOLT	10*60
6	50708-168-000	1	SPACER	14*46L
7	53173-145-000	1	CABLE BRACKET	
8	46601-168-000	1	PEDAL FIX BRACKET	
9	94001-06000	4	HEX NUT	6mm
10	50708-168-00A	1	SPACER	14*51L
11	45437-145-000	1	RESET SPRING	
12	35357-108-000	1	STOP SWITCH SPRING	
13	94201-20150	2	COTTER PIN	2.0*15
14	96000-06016	1	HEX WASHER FACE BOLT	6*16
15	43450-168-00A	1	BRAKE ROD	
16	35350-108-000	1	STOP SWITCH ASS'Y	
17	45520-168-000	1	BRAKE ELBOW	
18	43452-168-000	2	DRIVE NUT	
19	95015-31001	1	REAR BRAKE FIXTURE	12*22
20	94101-1624005	1	PLAIN WASHER	16.5*24*0.5
21	94511-1200S	1	EXTERNAL CIR CLIP	STW-12
22	96000-10070-14G	1	HEX WASHER FACE BOLT	M10*70
23	46510-168-000	1	BRAKE ARM	
24	94511-2800S	1	EXTERNAL CIR CLIP	STW-28
25	45521-168-000	1	PIN	
26	17910-168-000	1	THROTTLE CABLE(REV.2)	
27	46512-168-000	1	PEDAL FIX BRACKET	



Assembly No.:193-24

REAR WHEEL AXLE,CHAIN

No.	Parts No.	Q'ty	Parts Name	Specification
1	42301-193-001	1	REAR AXLE	
2	45015-168-000	1	BRAKE DISC	
3	41201-168-000	1	REAR SPROCKET	27T
4	23801-193-000	1	DRIVE SPROCKET ASS'Y	16T
5	40530-193-000	1	DRIVE CHAIN	50*58L
6	94101-1529030	1	PLAIN WASHER	15*29*3
7	90350-14000	1	NYLON NUT	14mm
8	96000-08020-12	8	HEX WASHER FACE BOLT	8*20
9	23803-193-000	1	BUSHING	
10	94101-1017025	1	PLAIN WASHER	10*17*2.5
11	96000-10032-14G	1	HEX WASHER FACE BOLT	10*32
12	90350-10000	2	NYLON NUT	10mm*1.25
13	40536-193-000	2	CHAIN ADJUST BOLT	
14	94050-12000	4	HEX FLANGE NUT WITH SERRATION	12mm
15	96000-10155-14	1	HEX WASHER FACE BOLT	10*155
16	40519-193-000	1	SPACER	
17	40513-193-000	1	SPACER	
18	40514-168-000	1	PLASTIC SPACER	275*35*1.5
19	40515-168-000	2	PLASTIC SPACER	110*30*1.5
20	41204-193-000	1	IDLE SPROCKET BRACKET	
21	41205-168-000	1	IDLE SPROCKET SHAFT	
22	94101-0818008	1	PLAIN WASHER	8.2*18*0.8
23	90350-08000	1	NYLON INSERT LOCK NUT	8mm
24	41203-168-000	1	IDLE SPROCKET SPRING(REV.1)	
25	96401-1018005	1	SPACE TUBE	10*18*5
26	96100-6200ZZ	1	RADIAL BALL BEARING	6200ZZ
27	41202-168-000	1	IDLE SPROCKET	11T
28	42610-193-000	2	REAR SPROCKET HUB	
29	40520-193-000	1	BRACKET	
30	94050-06000	1	HEX FLANGE NUT WITH SERRATION	6mm
31	96000-06030	2	HEX WASHER FACE BOLT	6*30
32	40511-197-000	1	REAR CHAIN COVER	
33	42302-193-000	1	SPACER COLLAR	
34	42100-179-000	1	RETAINER	
35	94001-33140G	2	HEX NUT	M33*14*P1.5

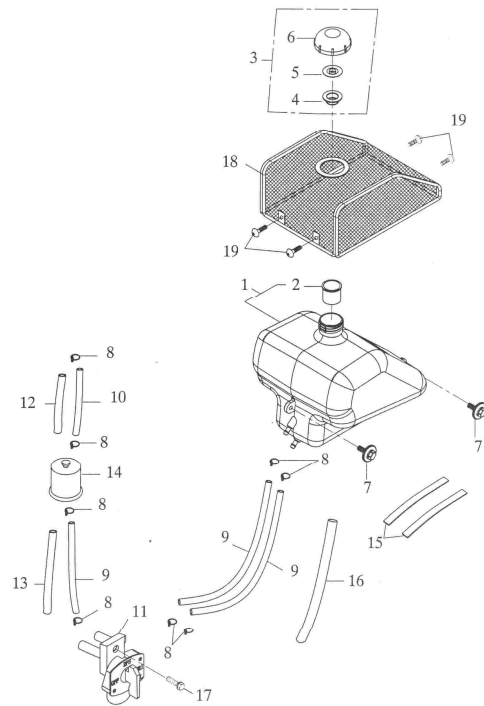


Assembly No.:193-25A

FRONT BRAKE

No.	Parts No.	Q'ty	Parts Name	Specification
1	44520-168-000	1	RIGHT KNUCKLE ASS'Y	
2	44510-168-00B	1	LEFT KNUCKLE ASS'Y	
3	45120-145-001	2	FRONT BRAKE SHOE COMP	
4	45133-145-000	2	STRAIN SPRING	
5	45450-168-000	2	FRONT BRAKE CABLE(rev.1)	
6	45437-145-000	2	RESET SPRING	
7	45310-145-000	1	FRONT RIGHT BRAKE ARM	
8	45410-145-000	1	FRONT LEFT BRAKE ARM	
9	45141-145-000	2	FRONT BRAKE CAM SHAFT(REV.3)	
10	96000-05024-08	2	HEX WASHER FACE BOLT	5*24
11	53191-168-000	2	LOCK BLOT	
12	53192-168-000	2	LOCK NUT	
13	91313-104-000	2	OIL RING	12.5*3
14	43470-168-000	1	PARKING BRAKE CABLE	
15	53179-168-000	1	LEFT LEVER ASS'Y	
16	53191-145-000	1	LOCK BLOT	
17	53192-145-000	1	LOCK NUT	

FUEL TAKE

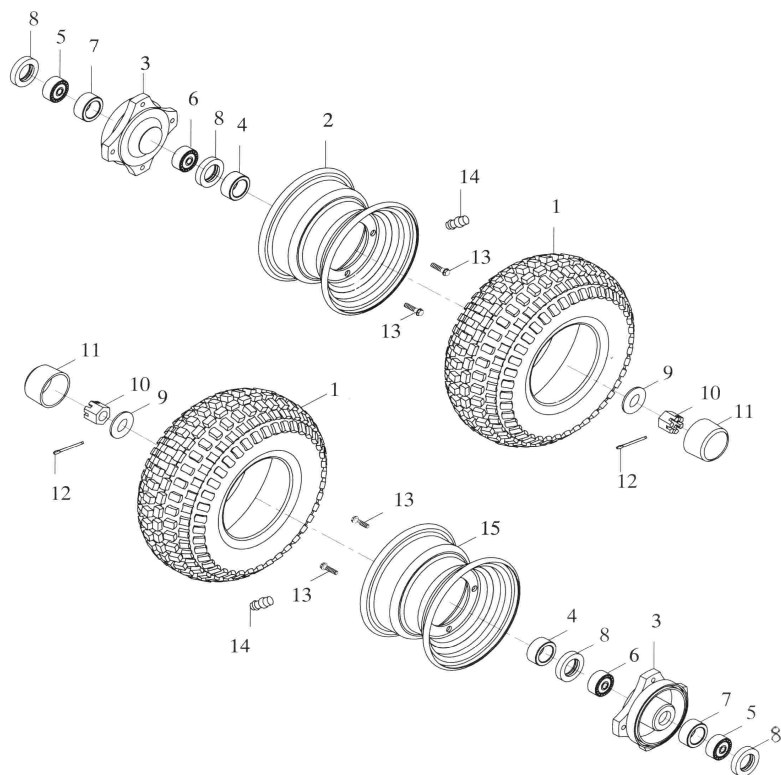


- 57 -

Assembly No.:193-26A

FUEL TANK

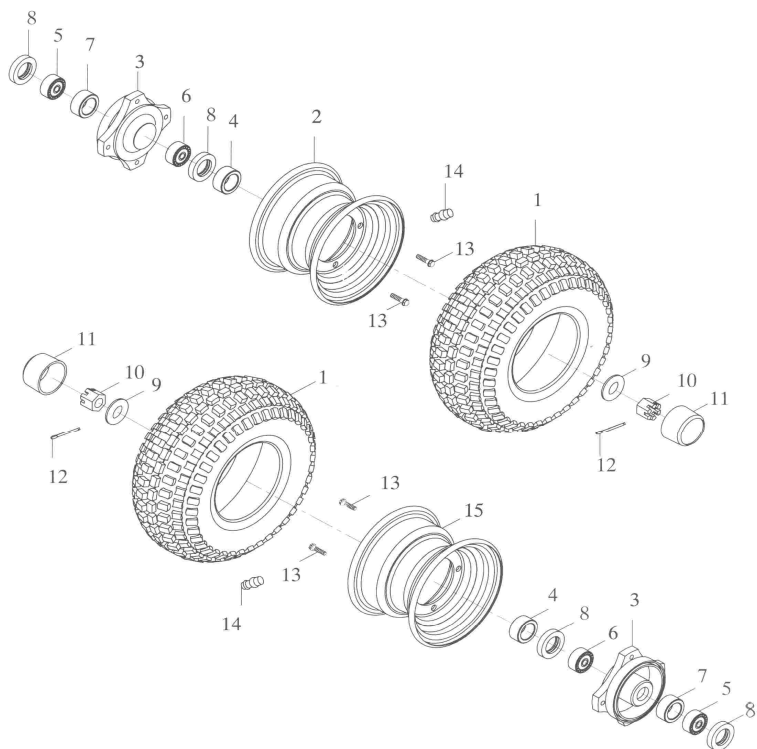
No.	Parts No.	Q'ty	Parts Name	Specification
1	17500-145-00A		1 FUEL TANK COMP	
2	17633-145-000		1 FUEL TANK TUBE	
3	17620-145-000		1 FUEL CAP ASS'Y	
4	17631-145-000		1 FUEL TANK CAP GASKET	
5	17632-145-000		1 FUEL TANK CAP BUSHING	
6	17621-145-000		1 FUEL TANK CAP BODY	
7	92000-06016-10		2 HEX BOLT	6*16
8	94510-08000		8 CLIP	8*0.8
9	94400-0408250		3 TUBE	4.8*8*250
10	94400-0408120		1 TUBE	4.8*8*120
11	16950-145-000		1 FUEL CUP	
12	94402-0911100		1 TUBE COVER	9*11*100
13	94402-0911200		1 TUBE COVER	9*11*200
14	16952-101-000		1 PETROL FILTER	
15	17505-145-000		2 SPONGE PAD	15*100*4
16	94402-1617150		1 TUBE COVER	16*17*150
17	96000-06016-10		1 HEX WASHER FACE BOLT	6*16
18	17520-168-000		1 FUEL TANK NET	
19	93800-06015S		4 PAN PHILPS BOLT	6*15



Assembly No.:193-27A

FRONT WHEEL

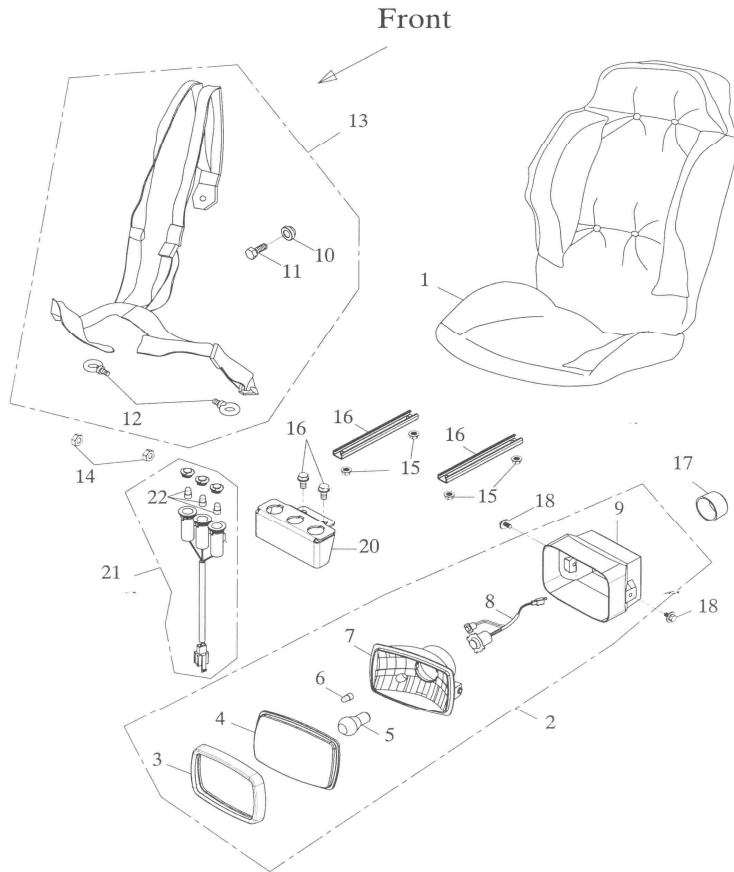
No.	Parts No.	Q'ty	Parts Name	Specification	
1	42711-168-00A		2 TIRE		18.7.2007
2	42701-145-001		1 RIM ASS'Y(REV.2)	7*5.2	
3	42710-145-000		2 FRONT BRAKE DRUM(REV.3)		
4	44311-145-000		2 FRONT COLLER(REV.1)	15*22*10	
5	96100-6003Z		2 RADIAL BALL BEARING	6003Z	
6	96100-6002Z		2 RADIAL BALL BEARING	6002Z	
7	44620-145-000		2 SPACER TUBE	15*22*15	
8	96500-22357		4 OIL SEAL	22*35*7	
9	94101-1240045		2 PLAIN WASHER	12*40*4.5	
10	94051-12000-17		2 HEX, SLOTTED NUT	12mm	
11	42814-145-000		2 RUBBER COVER		
12	94201-30320		2 COTTER PIN	3*32	
13	96000-10020-14		8 HEX WASHER FACE BOLT	10*20	
14	42616-145-000		2 AIR NOZZLE		
15	42701-168-000		1 RIM ASS'Y		



Assembly No.:193-28A

REAR WHEEL

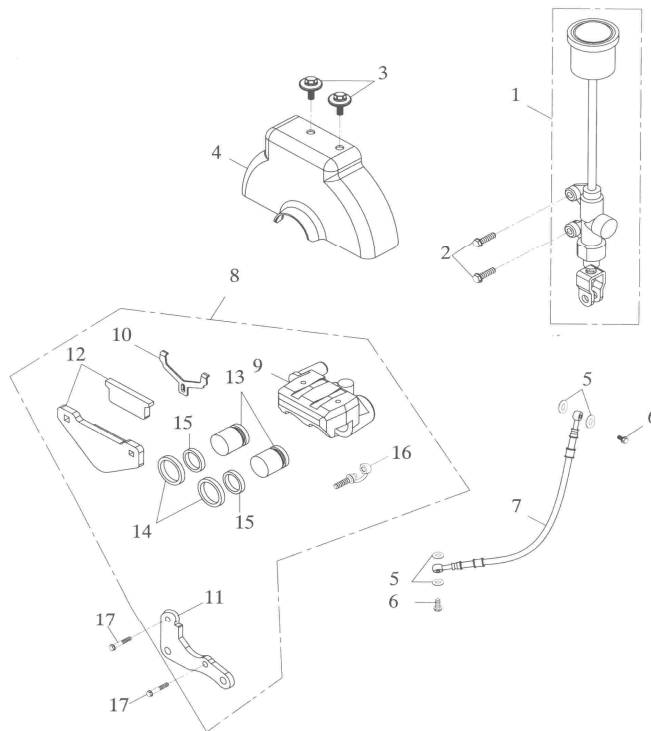
No.	Parts No.	Q'ty	Parts Name	Specification
1	42811-168-00A	2	REAR TIRE	18*9.5-8
2	42801-146-000	2	REAR RIM	8*7
3	42036-168-000	2	RIM HUB	
4	96500-40286	2	OIL SEAL	40*28*6
5	96600-168-000	4	BEARING HOLDER	
6	96100-6005	2	RADIAL BALL BEARING	
7	42616-145-000	2	AIR NOZZLE	
8	94101-1640050	2	PLAIN WASHER	16*40*5
9	94051-16000-24	2	HEX.SLOTTED NUT	16mm
10	42814-145-000	2	RUBBER COVER	
11	94201-30320	2	COTTER PIN	3*32
12	96000-10020-14	8	HEX WASHER FACE BOLT	10*20
13	96000-08020-12	6	HEX WASHER FACE BOLT	8*20
14	96500-40257	2	OIL SEAL	40*25*7
15	94111-0813020	6	SPRING WASHER	8.5*13*2
16	90350-08000	6	NYLON INSERT LOCK NUT	8mm



Assembly No.:193-29A

SEAT,HEAD LIGHT

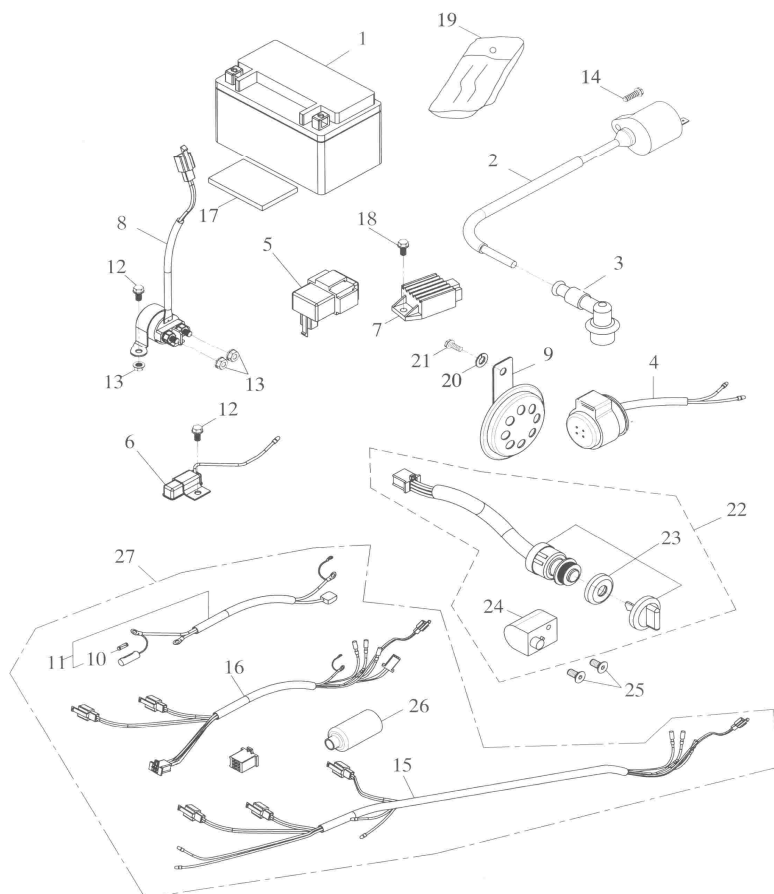
No.	Parts No.	Q'ty	Parts Name	Specification
1	77200-168-00A		1 SEAT ASS'Y	
2	33100-168-00A		1 HEAD LIGHT ASS'Y	
3	33104-168-00A		1 RIM	
4	33103-168-00A		1 HEAD LIGHT LENS	
5	34901-110-00A		1 HEAD LIGHT BULB (E-MARK)	12V35W35W
6	34909-120-000		1 POSITION LIGHT BULB	12V5W
7	33105-168-000		1 HEAD LIGHT REFLECTOR	
8	34801-168-00A		1 HEAD LIGHT WIRE	
9	33111-168-00A		1 HEAD LIGHT BASE	
10	77217-168-000		1 SPACER	
11	77218-168-000		1 BELT BOLT	7/16**25
12	77219-168-000		2 BELT BOLT	
13	77216-168-00A		1 SEAT BELT ASS'Y	
14	77222-168-000		2 BELT NUT	7/16"
15	94050-08000		4 HEX FLANGE NUT WITH SERRATION	8mm
16	77202-168-000		2 SEAT ADJUSTOR BASE	
17	42814-145-000		1 RUBBER COVER	
18	92000-06014-10		2 HEX BOLT	6*14
19	96000-06012-10G		2 HEX WASHER FACE BOLT	6*12
20	37212-145-000		1 INDICATOR LIGHT PLATE(REV.1)	
21	37250-145-00A		1 INDICATOR LIGHT	
22	34908-101-000		3 BULB	12V1.7W



Assembly No.:193-30

REAR BRAKE SYSTEM

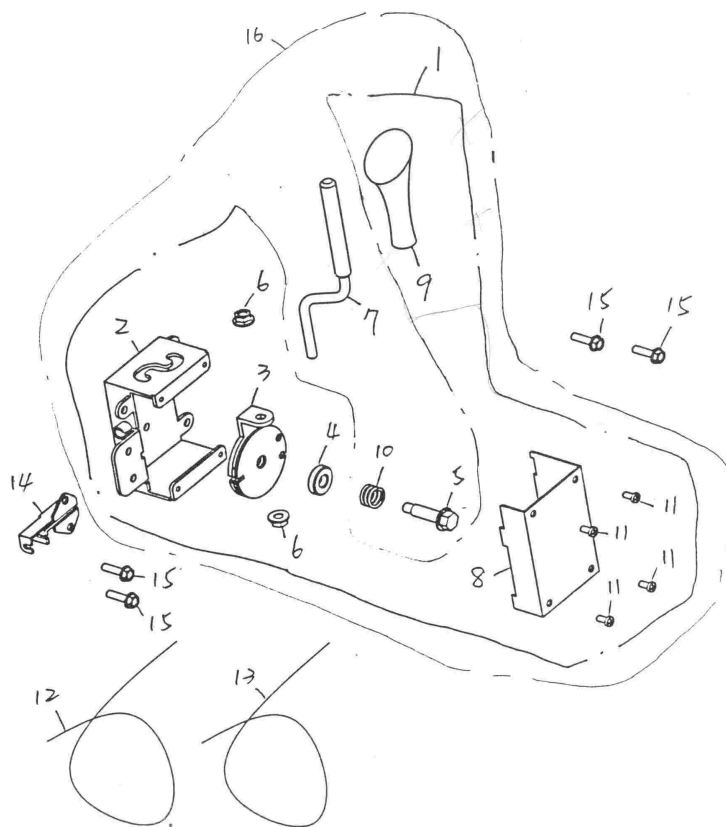
No.	Parts No.	Q'ty	Parts Name	Specification
1	43500-168-000	1	REAR BRAKE CYLINDER SUB ASS'Y (REV.1)
2	96000-08012-10	2	HEX WASHER FACE BOLT	8*12
3	90111-06014-18G	2	LADDER BOLT	6*14*2.5
4	45018-168-000	1	FRONT BRAKE DISC COVER	
5	94101-1014510	4	COPPER PLAIN WASHER	10*14.5*1
6	45456-107-000	2	BRAKE HOSE HEX BOLT	10*22
7	43460-168-000	1	REAR BRAKE HOSE (REV.1)	
8	43000-168-000	1	REAR BRAKE CALIPER ASS'Y	
9	45010-168-000	1	CALIPER BODY	
10	45025-168-000	1	PAD BRACKET	
11	43001-168-000	1	SUPPORT BRACKET	
12	45120-168-000	1	BRAKE PAD	
13	45046-168-000	1	CALIPER PISTON	
14	45042-168-000	1	CALIPER OIL SEAL	
15	45041-168-000	1	CALIPER SEAL	
16	45031-107-000	1	BREED SCREW KIT	
17	96000-10087-14	2	HEX WASHER FACE BOLT	10*87



Assembly No.:193-31A

ELECTRICAL EQUIPMENT

No.	Parts No.	Q'ty	Parts Name	Specification
1	31500-120-000	1	BATTERY	YTX7A-BS
2	30510-168-000	1	HIGH TENSION COIL	
3	30700-168-000	1	SPARK PLUG CAP	10KΩ
4	38301-107-000	1	FLASHER RELAY	¼Ø-Ç 12V
5	30410-120-000	1	C.D.I UNIT(30410)	
6	35400-168-000	1	RESISTOR COMP	
7	31600-120-000	1	REGULATOR RECTIFIER	
8	38501-168-000	1	STARTING RELAY	
9	38110-168-000	1	HORN (E-MARK)	12V
10	98200-106-000	1	FUSE	7A
11	32101-168-000	1	BATTERY WIRE	
12	96000-06012-10	4	HEX WASHER FACE BOLT	6*12
13	94050-06000	3	HEX FLANGE NUT WITH SERRATION	6mm
14	96000-05024-08	1	HEX WASHER FACE BOLT	5*24
15	32102-168-00A	1	STARTING WIRE HARDNESS	
16	32103-168-00A	1	MAIN WIRE HARDNESS	
17	31511-168-000	1	SPONGE PAD	140*70*10mm
18	96000-06016-10	1	HEX WASHER FACE BOLT	6*16
19	50120-120-000	1	TOOL BAG	
20	94111-0612015	1	SPRING WASHER	6*12*1.5
21	93500-06012	1	PAN PHILLIPS BOLT	6*12
22	35010-168-000	1	KEY SET	
23	35100-168-00A	1	IGNITION SWITCH ASS'Y	
24	53600-154-000	1	STEERING HANDLE LOCK (REV.1)	
25	93902-06012	2	FLAT HEAD PHILLIPS BOLT	6*12
26	32105-145-000	1	PROTECT PAD	
27	32100-168-00A	1	MAIN WIRE HARNESS	



Assembly No.:193-32

SHIFTING SYSTEM

No.	Parts No.	Q'ty	Parts Name	Specification
1	24700-193-000		1 GEAR SHIFT SUB ASS'Y	
2	24701-193-000		1 SHIFT BASE	
3	24702-193-000		1 SHIFT PLATE	
4	24709-193-000		1 COLLAR	
5	24705-193-000		1 FIX SHIFT	
6	94050-08000		3 HEX FLANGE NUT WITH SERRATION	8mm
7	24707-193-000		1 SHIFT LEVER	
8	24703-193-000		1 OUTER COVER	
9	24704-193-000		1 GRIP	
10	24708-193-000		1 RESET SPRING	
11	93500-05010		4 PAN PHILLIPS BOLT	5*10
12	77212-193-000		2 REVERSE CABLE A	
13	77213-193-000		1 REVERSE CABLE B	
14	77230-145-000		1 SEAT LOCK ASS'Y	
15	96000-06015-10		4 HEX WASHER FACE BOLT	6*15
16	24710-193-000		1 GEAR SHIFTING SYSTEM ASS'Y	